

RECOMMENDATIONS FOR FEMALE TRAVELERS &



Baños, Tungurahua. Photo: Ministerio de Turismo.

Ministerio de Turismo



República
del Ecuador



Juntos
lo logramos

MINISTER OF TOURISM

Niels Olsen

VICE MINISTER OF TOURISM

Ana García Pando

UNDERSECRETARY OF REGULATION & CONTROL

Aldo Salvador

DIRECTOR OF TOURISM SERVICE USER PROTECTION

Gabriela Suárez

CONTENT PLANNING AND WRITING

Karla Amador - Specialist in Tourism Service User Protection

TECHNICAL REVIEW BY MINISTRY OF TOURISM

Paúl León - Specialist in Tourism Service User Protection

Diego Castañeda - Regulatory Director

María José Navas - Director, Competitive Management

Felipe Álava - Director of Products & Destinations

Gabriela Echeverría - Director, Island Region

Christian Garzón - Director, Regional Office 1

Viviana Macancela - Specialist, Regional Office 6

Fanny Condo - Director, Regional Office 8

INTERINSTITUTIONAL TECHNICAL REVIEW

Blanca Rivera García - Specialist of National Eradication System

Daniela Burgos - National Director of Disabilities, Ministry of Public Health

Gabriela Quinaluisa - National Office of Primary Healthcare, Ministry of Public Health

Desire Viteri - National Office for Human Rights, Gender Equality, and Inclusion, Ministry of Public Health

Juan Pérez, Analyst of Formulation, Information & Studies - National Council on Disability Equality

María Eugenia Castro - Director of Human Rights & Gender Equality, Ministry of Interior

Gary Almeida - National Regulatory Director for Emergencies, SIS ECU 911

Sandra Álvarez - Analyst, Prevention of Rights Violations, Ministry of Social and Economic Inclusion

Johana Rivadeneira - Andean Travel Company

DIRECTOR OF SOCIAL COMMUNICATION

Cristina Calderón

GRAPHIC DESIGN

Solange Rosero

Diciembre, 2021.

© Ministerio de Turismo, Av. Gran Colombia N11-165 y Gral. Pedro Briceño.

Postal Code: 170403 / Quito - Ecuador.

Phone Number: +593 2 399 9333

www.turismo.gob.ec

The partial or total reproduction of this publication, in any form or by any mechanical or electrical means, is permitted as long as it is authorized by the editors and the source is correctly cited

**FREE DISTRIBUTION
SALE FORBIDDEN**



QUIPORT

AEROPUERTO INTERNACIONAL DE QUITO

**Ministerio de Turismo
Secretaría de Derechos Humanos**



República
del Ecuador



**Juntos
lo logramos**



Guayaquil, Guayas. Photo: Ministerio de Turismo.

This guide contains helpful travel recommendations for women and vulnerable groups that visit the country for tourism, and its objective is to provide adequate information that allows tourists to make the best decisions before and during their stay in Ecuador, ensuring that their trip is enjoyable.



BEFORE THE TRIP



Zaruma, El Oro. Photo: Ministerio de Turismo.

REQUIREMENTS TO ENTER ECUADOR

Ensure that you have all of the entry documentation required:

- Passport.
- Visa (if required).
- Covid-19 vaccination certificates.
- Health declaration form.
- Having a color copy of the travel document could be useful.

Check the travel policies issued by the airline:

- Luggage.
- Biosafety.

GENERAL RECOMMENDATIONS

Review important information:

- Tourist attractions and areas.
- Ensure that the establishments you are going to use have the proper tourist registration. The Ministry of Tourism offers detailed information at the following link: https://docs.google.com/spreadsheets/d/1HXdnN9_cqfUEUMGywSLOHOMIxx3k8T9A/edit#gid=533588772

RECOMMENDATIONS FOR FEMALE TRAVELERS & +

- Check comments or reviews made by other tourists of the services offered around the country.
- If you plan on doing adventure tourism, be sure to hire a specialized travel agency that has the permits and authorizations required from the competent authorities.
- If you would like to rent a vehicle, remember to have the documentation required by the service provider, including damage and third-party insurance, and verify the expiration date of your driver's license.
- Climate: Remember that Ecuador has different altitudes, and some cities in the Andes are more than 2,000 meters (approx. 6,561 feet) above sea level.
- Local customs and attire.
- If you are traveling with a currency other than the US Dollar, check the official exchange rate and ensure that your money can be accepted at banks and authorized financial institutions in Ecuador.
- Ensure that your equipment and mobile service operator is valid in Ecuador; otherwise, upon arrival, you will be able to contract local services.
- Outlets (electrical adapter) and voltage.
- Have the number or emergency contact information of the Consulate or Embassy of your country in Ecuador at hand. <https://www.cancilleria.gob.ec/2021/05/11/emba-jadas-y-consulados-en-el-exterior/>



Tena, Napo. Photo: Ministerio de Turismo.



Cuenca, Azuay. Photo: Ministerio de Turismo.

- It would be better if you know groups, organizations and institutions aimed for women and make contact with them before you travel, in order they may help you in case you need it.
- The Human Rights Secretariat is an institution that provides support to prevent and to treat cases of violence against women, adolescents and children through its forty five Comprehensive Care Services (CCS) in the different forty districts across the country. If you want to contact them, please enter to the following link: <https://www.derechoshumanos.gob.ec/>
- Download the ECU911 app for Android or iOS use it to report any type of emergency.

MEDICAL INFORMATION

- Get a general medical check-up prior to your trip
- Pack frequently-used medication with you in case of allergies to medication or other products. Prepare a short document that describes your medical history.
- Carry small doses of common medications in case of discomfort, such as: headaches, dizziness, stomach aches, cramps, and urinary tract infections. Don't forget repellent and SPF 50+ sunscreen.
- Take out a comprehensive travel insurance policy that covers illnesses, accidents or death. Make sure that you have full coverage in Ecuador for the duration of your vacation. In the case of adventure tourism, make sure that the insurance coverage includes the activities you are going to do.



Mitad del Mundo, Pichincha. Photo: Ministerio de Turismo.



DURING YOUR TRIP



Quito, Pichincha. Photo: Ministerio de Turismo.

BIOSAFETY RECOMMENDATIONS

- Use a mask at all times.
- Wash your hands with soap and water or use an alcohol-based sanitizer frequently.
- Follow social distancing measures.
- Follow the news on official channels regarding biosafety measures, protocols and capacity limits for the places you are planning to visit.

GENERAL RECOMMENDATIONS

- In case of emergency, dial 9-1-1 or use the ECU911 mobile phone app for Android and iOS.
- Carry a color copy of your travel documents with you at all times.
- Keep in touch with your family or friends, letting them know where you are and your planned itinerary.
- Travel comfortably: carry only the essentials on your outings or excursions
- Wear activity-appropriate clothing, as well as: a cap, sunglasses, mosquito repellent, and SPF 50+ sunscreen (even when the day is cloudy or when visiting high mountain areas).
- If you are carrying cash, store it in the hotel safe.

RECOMMENDATIONS FOR FEMALE TRAVELERS & +

- Avoid posting your itineraries on social media.
- If you require information, request it from the hotel reception, your travel agency or friends living in the destination you are visiting.
- For transfers, request transportation at the reception of your hotel.
- Behave as you would at home, avoiding deserted or dark areas.
- Find out about the town you are visiting: memorize some of the streets around the hotel as well as the nearby tourist attractions.
- Avoid street vendors and individuals offering flyers or other objects.
- Your memories are important! make backup copies of your photos or videos, preferably daily and on the cloud.
- If you notice that your clothes or belongings have been sprayed or stained with any type of substance, go to a nearby public place or to your hotel.
- If you require medical assistance, visit the following webpage: <https://geosalud.msp.gob.ec/geovisualizador/> to locate the health center closest to your hotel.

RECOMMENDATIONS IN TRANSPORTATION

Local and Interprovincial Bus Terminals

- For local or interprovincial trips, use public transportation from the bus terminals in each city, or catch a bus from the official stops used by the bus companies.
- If you leave your large backpack and/or suitcase in the hold of the bus, request a voucher, ticket or receipt for your luggage.
- Check to ensure that your luggage is stored safely. If you place your backpack on the ground, put it down in front of your feet.



Guayaquil, Guayas. Photo: Ministerio de Turismo.



Cuenca, Azuay. Photo: Ministerio de Turismo.

- Be attentive to your belongings. Avoid displaying valuables (passport, cameras, cell-phones, cash, others). If you carry a backpack or purse, wear it in reverse (in front of your body).
- In case of an accident, remember that bus companies are obliged to have an insurance policy that covers their passengers.

Taxis

- Request the taxi service at your hotel or restaurant or use the mobile applications of your choice.
- If you are going to take a taxi on the street, consider the following:
 - The taxi must be yellow and have an orange license plate.
 - It must have the Safe Transport logo.
 - It must have a registration number on its front doors.
 - It must have a security camera and an emergency button inside.
 - It must have a fare meter (taximeter).
- Send the license plate number of the vehicle that you are traveling in to a family member or friend as a preventive measure.

Urban Buses

- Have cash in coins (for local use) on hand to pay the bus fare.
- Check the routes of the urban buses in advance to know where they stop, and let the driver know so that it is easier to reach your destination.

RECOMMENDATIONS FOR FEMALE TRAVELERS & +

- Avoid carrying valuables, cameras, cellphones, personal documents, etc. in external pockets or in view. It is advisable to place these objects in the interior pockets of backpacks or purses.
- Keep an eye on your belongings.

Car Rental

- Remember that the speed limits in Ecuador are:
 - 50 km/hour in the city, except in areas where the authority has set a lower speed limit, such as: school zones, pedestrian crossings, among others.
 - 90 km/hour on perimeter roads.
 - 100 km/hour on highways.
- Do not exceed the speed limits to minimize the risk of accidents or the payment of unnecessary fines.
- If any damage is caused to your vehicle, request support from the vehicle insurance company and stay inside it until assistance arrives.
- Wherever possible, drive with the windows up and doors locked.

RECOMMENDATIONS FOR BANKS AND ATMS

- If you need to exchange currency, only do so at banks or currency exchange office.
- Whenever possible, perform banking transactions electronically. If you need to personally approach the financial institutions or ATM to make cash withdrawals or advances, do so at a branch that is located inside a shopping center, preferably in the morning.
- Do not accept help or company from strangers.



Loja, Loja. Photo: Ministerio de Turismo.



Puyo, Pastaza. Photo: Ministerio de Turismo.

RECOMMENDATIONS FOR TOURIST ACTIVITIES

Tours and Excursions

- Get ready to forge unforgettable memories! Charge your electronics and keep your power supply accessories close at hand.
- Carefully review the tourism services contract prior to accepting and paying for tourism services. Check the refund clauses and general policies of the operator.
- Request a copy of the contract and physical or electronic service order of the contracted activities.
- Request a 24/7 assistance number from your tour operator that you can call if you have any mishaps while the tourism services contracted are being provided; or failing that, remember that you can dial 9-1-1 or use the ECU911 mobile phone app in case of emergencies.
- Verify that the guide has his/her tourism license and a first-aid kit.
- Inform your guide or service provider in a timely manner about your food preferences, allergies or pre-existing health conditions.
- Take your physical condition and ability into account prior to doing any activities that require physical effort. Stay hydrated.
- Follow your guide's instructions and the recommendations given prior to the tour or excursion.
- When hiking in natural areas, always use the trails marked for this purpose.
- Respect the rules of visitor conduct in place at the tourist attractions and destinations you visit.

- Avoid consuming drugs and alcohol; if you do, do not take long walks, perform activities in water, or any others that require physical effort or concentration.
- Report any substandard services or contractual breaches to the National Tourism Authority via email: denuncias@turismo.gob.ec

Adventure Tourism Activities

- Before contracting and paying for an adventure tourism activity, check the minimum age requirements, level of difficulty, and any other conditions.
- Follow the health and safety measures and recommendations of the tour operator prior to starting the adventure activities.
- In case of adventure activities that require a special permit or license, consult your tour operator.
- Ask the service provider for any safety equipment required to perform the activity, and make sure that it is in optimal operational conditions.

Tourism Activities in Protected Natural Areas

- All Protected Natural Areas in Ecuador are free to access with the exception of the Galapagos National Park.
- It is recommended to visit Protected Areas by contracting the services of a Travel Agency and/or Tour Operator that can provide you with a professional guide who is certified by the national tourism authority.
- Follow the rules for visiting protected areas.
- Remember that there may be connectivity issues at certain points in protected natural areas, so it is advisable to keep your family or friends informed about where you will be, and bring your mobile communication equipment with a fully charged battery.
- Remember that the Ministry of Environment, Water and Energy Transition is the national authority responsible for protected areas.



Cuicocha, Imbabura. Photo: Ministerio de Turismo.



Quito, Pichincha. Photo: Ministerio de Turismo.

Entertainment Centers

- Do not accept or share your drinks or food with strangers.
- Recognize your limits: if you drink alcoholic beverages, remember to drink responsibly.
- Be attentive to your belongings at all times.
- Use safe public transportation services. If required, request support from the establishment or use the mobile apps of your choice.

RECOMMENDATION FOR RISK PREVENTION

Stay informed of the natural and man-made risks that you could be exposed to during your visit to the country. For more information, visit the following links:

- Risk Management Secretariat: <http://www.gestionderiesgos.gob.ec/>
- Geophysical Institute: <https://twitter.com/igecuador?lang=es>

OTHER RECOMMENDATIONS FOR PRIORITY CARE GROUPS AND LGBTIQ+ GROUPS

Pregnant Women

- Before purchasing your plane ticket, check the requirements for flying while pregnant with the airline: medical certificates, maximum weeks of pregnancy for flying, etc.
- Consult your physician to verify that it is safe to make the trip and provide the necessary recommendations for you and your baby.
- Ask the airline for a front row and aisle seat so you can stretch and move around in comfort.
- Take out a medical insurance policy that covers you and your baby in the case of: premature births, neonatal care, complications, etc.

People with Disabilities

Article 44 of Ecuador’s Organic Law on Disabilities, published in Official Gazette No. 796 on September 25, 2012, states the following:

“Article 44.- Accessible tourism.- The national tourism authority, together with the decentralized autonomous governments, will ensure accessibility for people with disabilities to the different tourist attractions, providing priority care, universal services, accessible transportation options, and services for each disability.

Additionally, the aforementioned agencies will ensure that private and public companies provide their services.”

- Before your trip, inform the airline and contracted tourism services of your accessibility and assistance needs.
- Inform your treating physician of your travel plans in case you require any special medical recommendations or prescriptions.
- If you are traveling with a service animal or guide dog, check the requirements for your trip in advance:
 - Animal health and accompaniment permits required for the flight.
 - Blind people have the right to travel with their guide dog in the cabin at all times.
- In case you require any other type of support (wheelchair, walker, oxygen tanks, etc.), inform the airline and contracted tourism service provider.
- In case of a hearing impairment, notify the airline and tourism service provider prior starting your trip. If possible, use digital adaptations as a means of communication on the flight and for the contracted tourism services.
- Ask about any health care services available and prepare a kit with the medication that you require, including the respective medical prescription, in advance.



Salinas, Santa Elena. Photo: Ministerio de Turismo.



Salinas, Santa Elena. Photo: Ministerio de Turismo.

- Remember to travel with any technical aids and tools that are tailored or adapted to your needs, along with any spare parts required. If you need any additional or unforeseen support services, check for a place near your travel address and contact information in advance.
- Have the contact information of your treating doctor at hand in case you require care while you are in Ecuador.
- Take out a travel insurance policy that meets your needs.
- Find out about the conditions of the place or places you are planning to visit and consult the services of specialized travel agencies or companies that have experience in serving visitors with disabilities.
- In case of emergency, dial 9-1-1.

Children and Adolescents

In the case of traveling with infants or very young children, it is recommended to bring any medication, food or hygienic products that you may need at the destination, and to verify that the same or similar medications or products can be purchased in the country.

- The age of majority in Ecuador is 18 years of age or older.
- The sale and consumption of alcoholic beverages to individuals under 18 years of age is prohibited.

It's important to consider the provisions of Articles 129 and 130 of Ecuador's Organic Law on Human Mobility, published in Official Gazette No. 938 on February 6, 2017:

“Article 129 Entry of children and adolescents.- Ecuadorian and foreign children and adolescents may enter national territory under the following conditions:

- Accompanied by both or one of their parents, legal guardians or whoever exercises parental authority.

- *Alone or with third parties. In the event that the foreign child or adolescent enters the country, he or she must only have the authorization of the person or persons exercising parental authority, the competent authority in their respective country, or under the regulations in effect in their country of origin and the regulations of current international agreements that Ecuador has signed.*

When an Ecuadorian child or adolescent enters alone, he or she will be placed under the protection of the competent authority until the respective protocol is followed.

Children or adolescents entering the country must be registered in the National Integrated Information System on Human Mobility. Said registry must indicate who they are entering the country with or who their guardian in the country will be, and where they will be staying.”

“Article 130.- Departure of children and adolescents.- *Children and adolescents who are Ecuadorian or foreign residents may leave national territory under the following conditions:*

- *Accompanied by their parents, legal guardians or whoever exercises parental authority, or with one of their parents and prior notarial or judicial authorization from the parent who is not traveling with them.*
- *Alone or with third parties with prior authorization from parents, guardians or those who exercise parental authority.*
- *Exceptionally and in the event that it is not possible to obtain authorization from the parents, guardians or whoever exercises parental authority, or because there is disagreement in this regard between those who exercise it, the parties may go before a competent judge and request a resolution on leaving the country. Said resolution must be made based on the best interests of children and adolescents.*
- *The departure of children or adolescents from the country must be registered in the National Integrated Information System on Human Mobility. Said registry must indicate who they are leaving the country with, who their guardian will be in the country of destination, and where they will be staying once they arrive.*
- *Children and adolescents who entered the country for tourism purposes will be subject to the country’s entry requirements.”*



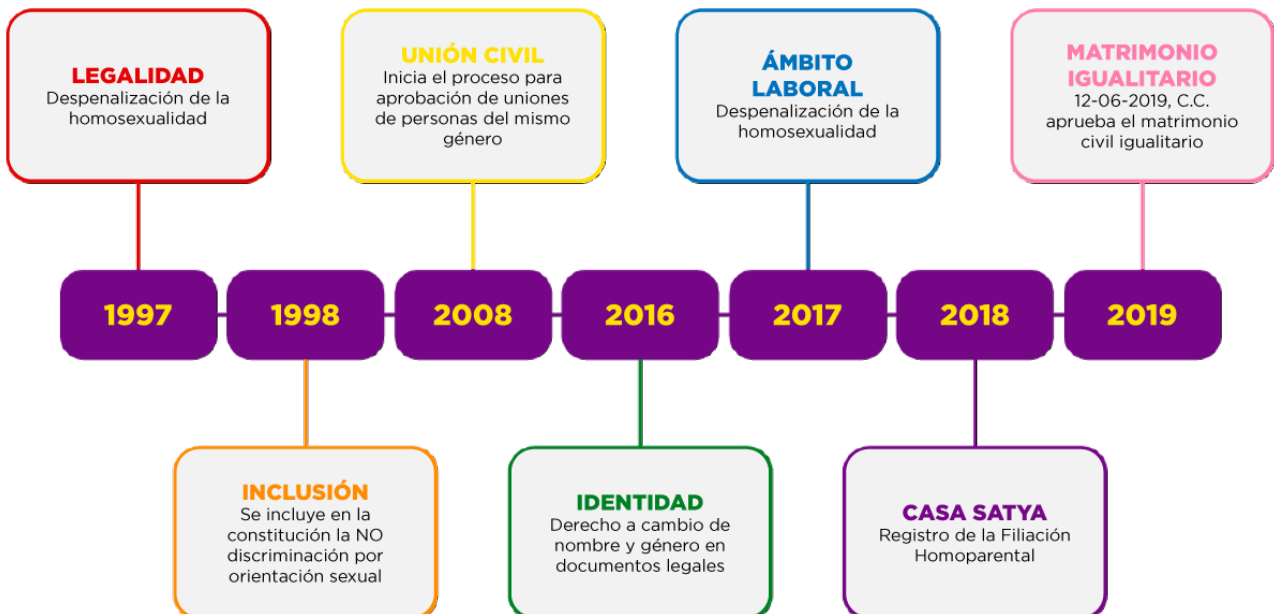
Guayaquil Guayas. Photo: Ministerio de Turismo.



Mindo, Pichincha. Photo: Ministerio de Turismo.

LGBTIQ+ Groups

The Constitution of Ecuador guarantees human rights for all individuals, including the principles of equality and non-discrimination; however, there are still places and/or people whose prejudices or lack of information prevent them from accepting certain individual characteristics such as sexual orientation and/or gender identity.



Fuente: Andean Travel Company.

Therefore, in order to make your trip as pleasant as possible, please read the following recommendations:

- Map out LGBTIQ+ groups, organizations, and individuals who can support you, and contact them prior to your trip to request more information. Remember that peer support will provide you with more information for your trip.
- Take care of your personal documents, especially your passport. It is preferable for you to carry a color copy of it.
- Educate yourself appropriately about the experience of people who belong to LGBTIQ+ groups to avoid unwelcoming places.
- The country offers tourism services that can provide adequate care according to your requirements. Look for operators and establishments that have experience in handling LGBTIQ+ groups.
- Avoid sharing personal information with strangers.

For more information on support groups, please visit the following links:

- Dialogo Diverso <https://dialogodiverso.org/didi/>
- Asociación Silueta X <https://siluetax.org/>
- Fundación Equidad <https://www.fequidadecuador.org/>

CHANNELS OF COMMUNICATION

In case of emergency

- Ensure that your mobile phone has sufficient battery power so that you can call for help at any time.
- In case of an emergency, report it through the ECU911 app for Android or iOS, or dial 9-1-1 to receive immediate assistance.
- When registering in the ECU911 mobile app, provide reliable information. The app allows users to report emergencies directly from the launch screen, and to search for the type of incident to be reported by emergency service.
- To report an emergency, you will need to provide basic information such as: name, identification number, nationality, exact address of where you are and, if possible, a reference.
- Remember that the use of the ECU911 app or dialing 9-1-1 is free.

In Case of Theft or Robbery

- Report the emergency to 9-1-1, and then file a complaint with the State Attorney General's Office through the following link: <https://www.fiscalia.gob.ec/denuncias-on-line-para-turistas/>
- If case of emergency and if you are in Quito, please report it to the Tourist Security Police (TSP) (see Annex).



Machalilla, Manabí. Photo: Ministerio de Turismo.



BEFORE LEAVING THE COUNTRY



Baños, Tungurahua. Photo: Ministerio de Turismo.

- Make sure you have your travel documents at hand.
- Check the status of your flight and the biosafety measures of your next destination with the airline.
- Show up at the terminal you are going to use for your trip ahead of time in order to go through immigration and any required security and biosafety protocols.



Quito, Pichincha. Photo: Ministerio de Turismo.



ANNEXES

TOURIST SAFETY POLICE, QUITO - OFFICES, INFORMATION AND PLACES FOR FILING COMPLAINTS

OFFICE	ADDRESS	BUSINESS HOURS
La Mariscal	Corner of Calle Reina Victoria y Vicente Ramón Roca, third floor	24 hours from Monday to Sunday
Plaza Grande	Calle Chile entre García Moreno y Venezuela (Inside the Casa de los Alcaldes)	08h00 to 00h00, Monday to Sunday
La Ronda	Calle Morales y Venezuela	08h00 to 00h00, Monday to Sunday
Aéroport International Mariscal Sucre	Tababela-Vía Collas, Alpachaca (La Roca building)	08h00 to 00h00, Monday to Sunday
Terminal Terrestre Quitumbe	Inside the Quitumbe Bus Terminal (main door)	08h00 to 00h00, Monday to Sunday

Contact Information

- **Telephone:** +593 (02) 254 3983
- **Email Addresses:** ssturistica98@gmail.com / turismo.secretaria@policia.gob.ec
- www.policiaecuador.gob.ec



Quito, Pichincha. Photo: Ministerio de Turismo.

VESTMENT

- The Ecuadorian Andes offer you an unbeatable setting to carry out your favorite mountain activity. To fully enjoy them, do not forget to go with the appropriate clothing and equipment.

MEDIA MONTAÑA MID-MOUNTAIN

3000 a 5000 msnm / 9842 to 16 404 ft



- 1 **Gorro de lana / Wool cap**
O gorra para el sol
Orsun hat
- 2 **Gafas / Sunglasses**
- 3 **Buff**
- 4 **Primera capa / Base layer**
Aleja el sudor, evita la humedad y el frío.
Materiales como poliéster o polipropileno.
Removes sweat, prevents humidity and cold.
Polyester- or polypropylene-like materials.
- 5 **Mochila / Backpack**
- 6 **Guantes / Gloves**
Térmicos / fibra sintética
Thermal / synthetic fiber
- 7 **Chaqueta impermeable / Outer layer**
Protege de la humedad, viento y lluvia.
Material tipo gore-tex.
Waterproof jacket protects against moisture, wind, and rain. Gore-tex like material.
- 8 **Bastones / Trekking poles**
- 9 **Pantalón / Pants**
Impermeable o secado rápido
Waterproof or fast dry
- 10 **Zapatos o botas de media montaña / Trekking boots or shoes**
- 11 **Medias de caminata / Trekking socks**

Vestment Mid-mountain. Photo: Ministerio de Turismo.

ALTA MONTAÑA HIGH-MOUNTAIN

más de 5000 msnm / above 16 404 ft



Linterna frontal / Headlamp 1

Casco / Helmet 2

Gafas / Sunglasses 3

Buff 4

Mochila / Backpack 5

Segunda capa / Mid layer 7

Retiene calor, facilita la evacuación de sudor. Material como poliéster, polipropileno o lana de nueva generación.

Retains heat, helps sweat drain. Material like Polyester, polypropylene or new generation wool.

Primera capa / Base layer 6

Aleja el sudor, evita la humedad y el frío. Material poliéster o polipropileno. Removes sweat, prevents humidity and cold. Polyester- or polypropylene-like materials.

Tercera capa / Outer layer 8

Protege de la humedad, viento y lluvia. Material tipo gore-tex. Waterproof jacket protects against moisture, wind, and rain. Gore-tex like material.

Guantes / Gloves 9

Térmicos
Thermal.

Arnés / Harness 10

Mitones / Mittens 11

Impermeables y transpirables. Waterproof and breathable.

Mosquetones / Carabiners 12

Pantalón / Pants 13

Impermeables gore-tex. Waterproof gore-tex.

Piolet / Ice axe 14

Cuerda dinámica / Dynamic rope 15

Lycra térmica / Base layer leggings 16

Polainas / Mountain gaiters 17

Protección contra golpes, nieve y arena. Protect from blows, snow and sand.

Medias de montaña / Mountaineer socks 18

Crampones con antizuelco / Crampons with anti-balling plates 19

Botas de alta montaña / Mountaineering boots 20

REGIONAL OFFICES OF THE MINISTRY OF TOURISM



Ibarra, Imbabura. Photo: Ministerio de Turismo.

REGIONAL OFFICE 1

- **Provinces:** Imbabura (Sede), Esmeraldas, Carchi, Sucumbíos, Orellana, Napo, Pichincha (excepto Quito).
- **Address:** Sucre 14-72 y Av. Teodoro Gómez, floor 2.
- **Telephone:** (593) (06) 2958-547 ext. 2630 - 2631 - 2632
- **Business Hours:** 08h15 - 17h00
- **Ibarra - Imbabura**

Esmeraldas Technical Office

- **Address:** Av. Del Pacífico - Malecón de Playa Las Palmas.
- **Telephone:** (593) (06) 2011446 ext. 2605 - 2606 - 2639
- **Esmeraldas - Esmeraldas**

Carchi Technical Office

- **Address:** Guayaquil N39-008 y Av. Manabí, floor 2.
- **Telephone:** (593) (06) 2960046 ext. 2652 - 2654
- **Tulcán - Carchi**

Sucumbíos Technical Office

- **Address:** Av. Aguarico y Circunvalación,

Edif. Centro de Atención Ciudadana, floor 1, office 18.

- **Telephone:** (593) (06) 2991914 ext. 2683 - 2684
- **Lago Agrio - Sucumbíos**

Orellana Technical Office

- **Address:** Calle Juan Montalvo y Av. 9 de Octubre.
- **Telephone:** (593) (06) 2881583 ext. 2660 - 2665
- **El Coca - Orellana**

Napo Technical Office

- **Address:** Calle Cesar Augusto Rueda y Av. 15 de Noviembre, sector El Balneario.
- **Telephone:** (593) (06) 2886536 ext. 2623 - 2624 - 2625
- **Tena - Napo**

Pichincha Technical Office

- **Address:** Av. Gran Colombia N11-165 y General Pedro Briceño (Mezzanine).
- **Telephone:** (593) (02) 3999333 ext. 1213 - 1003
- **Quito - Pichincha**



Cuenca, Azuay. Photo: Ministerio de Turismo.

REGIONAL OFFICE 6

- **Provinces:** Azuay (sede), El Oro, Loja, Cañar, Zamora, Cotopaxi, Chimborazo, Tungurahua, Pastaza, Morona Santiago.
- **Address:** Simón Bolívar 12-60 (Casa de Coco, ground floor).
- **Telephone:** (593) (02) 838209 ext. 22719
- **Business Hours:** 09h00 - 15h30
- **Cuenca - Azuay**

Cañar Technical Office

- **Address:** Av. 16 de Abril y Calle Babahoyo. Edificio CAC Azogues. Floor 2.
- **Telephone:** (593) 07 3706016 ext 2795 - 2796 - 2798
- **Azogues - Cañar**

Loja Technical Office

- **Address:** Calle Sucre 191-31 y Quito, corner.
- **Telephone:** (593) (07) 2572964 ext. 2760 - 2770
- **Loja - Loja**

Zamora Chinchipe Technical Office

- **Dirección:** Calle José Luis Tamayo y Diego de Vaca. Edificio de Gobernación de Zamora Chinchipe, primer piso.
- **Telephone:** (593) (07) 2606466 ext. 2775 - 2778
- **Zamora - Zamora Chinchipe**

El Oro Technical Office

- **Dirección:** Av. Rocafuerte 07-22 e/ Junín y Tarqui.
- **Telephone:** (593) (07) 2968480 ext. 2782 - 2784
- **Machala - El Oro**

Chimborazo Technical Office

- **Address:** Primera Constituyente y Carabobo. Edificio GAD Provincial de Chimborazo. floor 1.
- **Telephone:** (593) (03) 2946682
- **Riobamba - Chimborazo**

Tungurahua Technical Office

- **Address:** Guayaquil 01-18 y Rocafuerte.
- **Telephone:** (593) (03) 2821800 ext. 2350
- **Ambato - Tungurahua**

Pastaza Technical Office

- **Address:** Km. 2 1/2 vía Puyo-Tena, Campus Universidad Estatal Amazónica.
- **Telephone:** (593) (03) 2894655
- **Puyo - Pastaza**

Cotopaxi Technical Office

- **Address:** Calle Marqués de Maenza y Quito, Edificio CAC El Rosal Latacunga, Planta baja, office 3.
- **Teléfono:** (593) (03) 3730594
- **Latacunga - Cotopaxi**

Morona Santiago Technical Office

- **Address:** Calle Bolívar entre Soasti y Amazonas.
- **Telephone:** (593) (07) 2701480 ext 2730.
- **Macas - Morona Santiago**



Guayaquil, Guayas. Photo: Ministerio de Turismo.

REGIONAL OFFICE 8

- **Provinces:** Guayas (Sede), Los Ríos, Santa Elena, Bolívar, Manabí y Santo Domingo de Los Tsáchilas.
- **Address:** Av. Francisco de Orellana y Justino Cornejo, Edif. Gobierno del Litoral, floor 8.
- **Telephone:** (593) (04) 2068 508 ext. 2401 / 2402
- **Business Hours:** 08h15 - 17h00
- **Guayaquil - Guayas**

Oficina Técnica Santa Elena

- **Address:** Av. Carlos Espinoza Larrea y Calle 5, Centro de Atención Ciudadana
- **Telephone:** (593) (04) 3728904 ext. 2480 - 2481
- **Salinas - Santa Elena**

Oficina Técnica Bolívar

- **Address:** Calle García Moreno y Sucre, Edificio de la Gobernación.

- **Telephone:** (593) (02) 3999333 ext. 2380
- **Guaranda - Bolívar**

Oficina Técnica Manabí

- **Address:** Calle Los Nardos y Av. 15 de Abril, Edif. Centro de Atención Ciudadana, floor 3.
- **Telephone:** (593) (02) 3999333 ext. 2559
- **Portoviejo - Manabí**

Oficina Técnica Santo Domingo

- **Address:** Av. Esmeraldas y Colorados del Bua, Edif. Santo Domingo Plaza, office 301.
- **Telephone:** (593) (02) 3999333 ext. 2203
- **Santo Domingo de los Tsáchilas**

Oficina Técnica Los Ríos

- **Address:** Av. 10 de agosto No. 1805 entre Barreiro y Mejía.
- **Telephone:** (593) (02) 3999333 ext. 2530
- **Babahoyo - Los Ríos**



Galapagos Islands. Photo: Ministerio de Turismo.

ISLAND REGION OFFICE

- **Province:** Galápagos.
- **Address:** Av. Charles Darwin y 12 de Febrero Edificio Capturgal.
- **Telephone:** (593) (05) 252-6174 / (05) 252-7135 ext. 2500
- **Business Hours:** 08h15 - 17h00
- **Puerto Ayora - Galápagos**

San Cristóbal Technical Office

- **Address:** Av. Alsacio Northia S/N y José Vallejo.

- **Telephone:** (593) (05) 252-0704
- **Puerto Baquerizo Moreno - Isla San Cristóbal**

Isabela Technical Office

- **Address:** Av. Antonio Gil, entre 16 de Marzo y Los Flamingsos.
- **Telephone:** (593) (05) 252-9132
- **Puerto Villamil - Isla Isabela**



@MinisterioTurismoEcuador



@ministerioturismoec



@TurismoEc

Ministerio de Turismo



República
del Ecuador



Gobierno
del Encuentro

Juntos
lo logramos