

Meetings *elevated.*

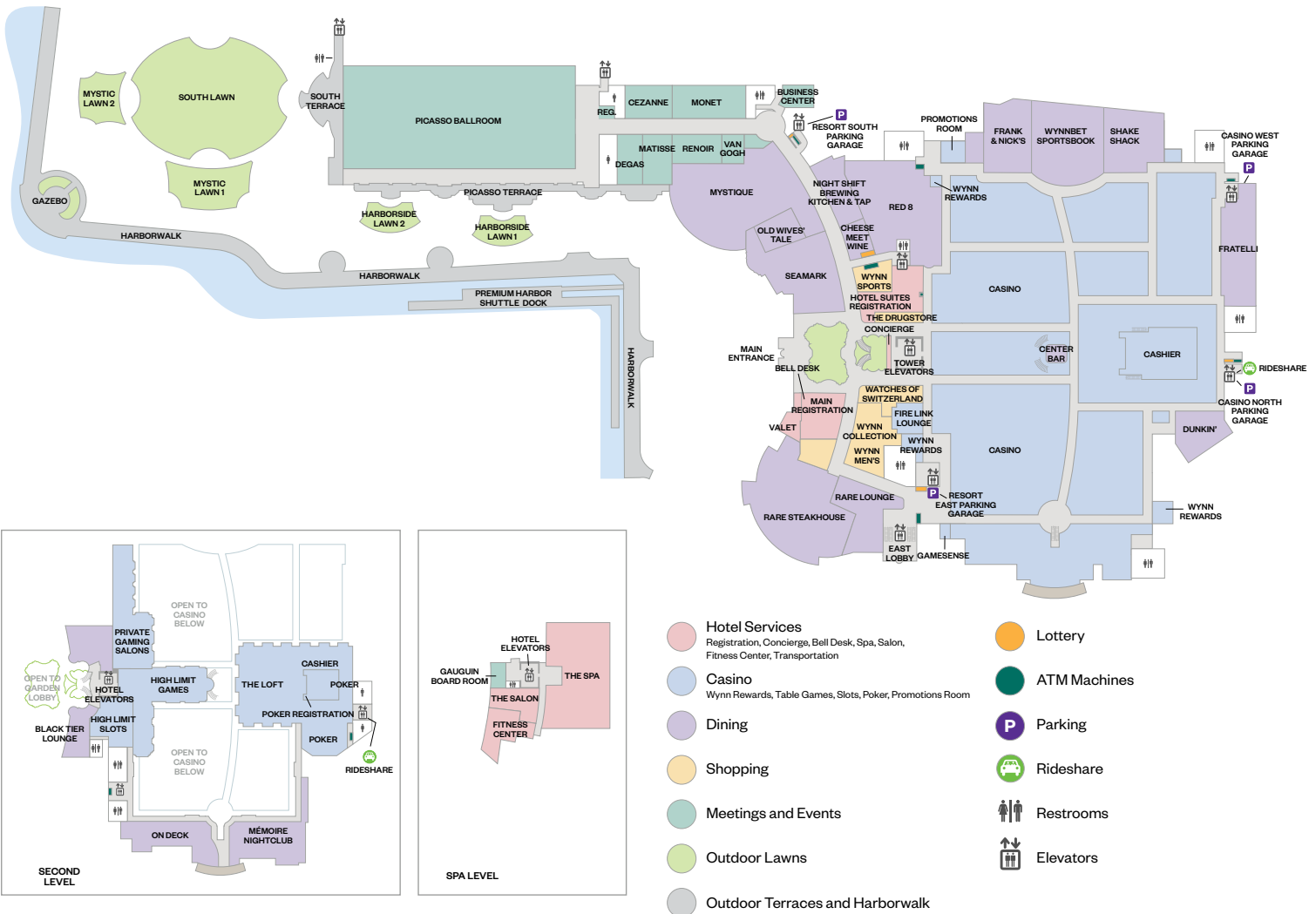
Welcome to Encore Boston Harbor

Conceived as an artful blend of stylish spaces, exclusive amenities and five-star service, Encore Boston Harbor attracts locals and visitors alike, drawn to the unique, award-winning experiences. From a night out with friends to weekend stays, week-long conventions or elegant weddings along the Mystic River, Encore Boston Harbor is the city's go-to destination, a waterfront resort that elevates every moment.

Situated on 33 acres, Encore Boston Harbor is also conveniently located less than five miles from Logan International Airport and is connected via guest shuttles to major transportation hubs. The 27-story tower, meanwhile, is positioned to offer views of the historic Mystic River and outer Boston Harbor.



Ultimately, Encore Boston Harbor is all about the details. It is the flowers on your table as you sit down to dinner, the crisply made Encore Dream Beds or the concierge who arranges tickets thought to be impossible. Get ready to be dazzled.



Elevated spaces.

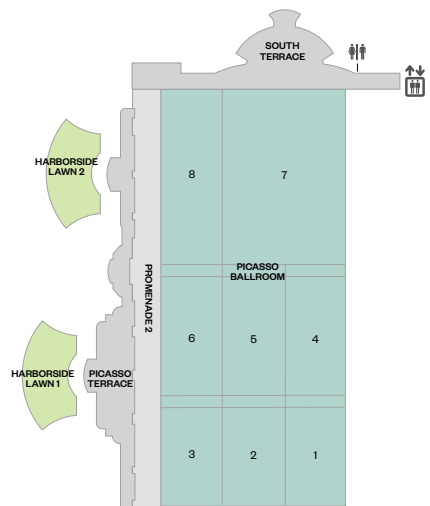
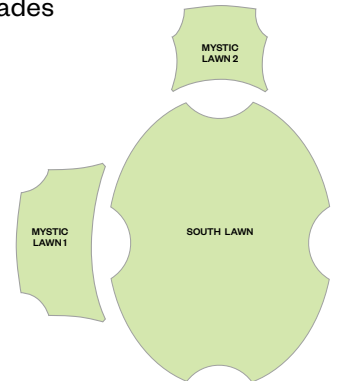
With convention spaces totaling 50,000-square-feet, Encore Boston Harbor is an ideal location for gatherings ranging from intimate and curated to dynamic and inspired. Each venue offers the ability to produce a uniquely tailored experience.

The centerpiece of these versatile environments is a 37,000-square-foot divisible ballroom, which provides endless options for meetings, conventions and events. Terraces and promenades amplify the possibilities of this grand space.

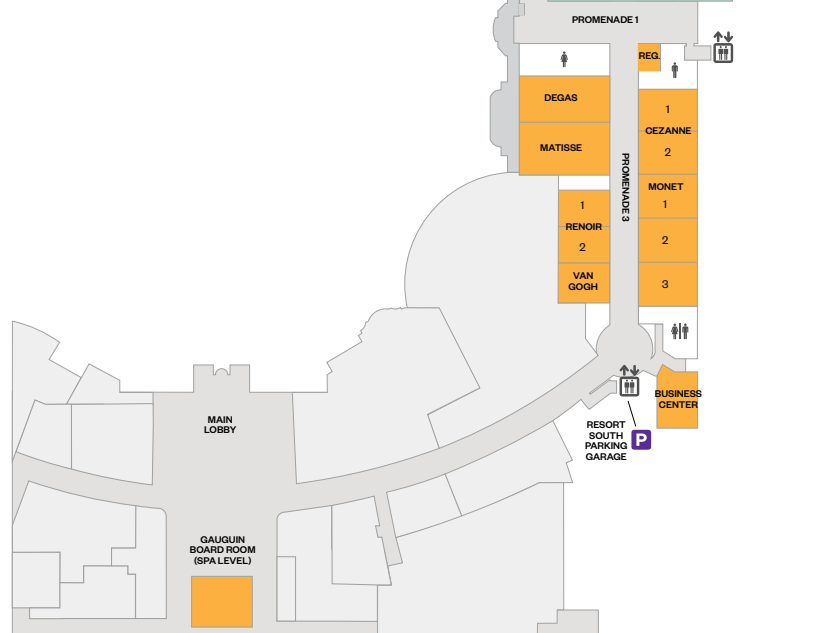
In addition, there are 10 fully customizable meeting rooms and an executive board room.

When the season is just right, the waterfront event lawns and gardens, totaling 21,000 square-feet, overlook scenic, manicured gardens and the beauty of Boston Harbor.

All these well-appointed spaces are located on a single level, overlooking the harbor.



- Ballroom
- Outdoor Lawns
- Outdoor Terraces and Harborwalk
- Meeting Rooms
- P Parking
- Restaurants, Retail, Hotel and Resort Amenities
- ♂ ♀ Restrooms
- ↑ ↓ Elevators



Encore
BOSTON HARBOR
A WYNN RESORT

Picasso Ballroom and Surrounding Meeting Rooms

Elevated spaces.

GRAND BALLROOM MEETING ROOM CAPACITY CHART													*REFLECTS 6 CHAIRS AT A ROUND		
Meeting Room	Sq. Ft.	Width	Length	Ceiling Height	Exhibits 8 x 10	Exhibits 10 x 10	Theater	Classroom	U-Shape	Hollow Square	Conference	Reception	Plated Meal	Buffet Meal	Crescent Rounds
Picasso Ballroom	36642	285'-4"	126'-1"	23'/27'	220	180	3408	2688	313	370	264	2819	1830	1470	1236
Picasso 1	2942	69'-6"	41'-7"	23'/27'	15	12	270	144	57	74	56	226	140	120	78
Picasso 2	2969	69'-6"	42'-0"	23'/27'	15	12	270	144	57	74	56	228	140	120	78
Picasso 3	3086	69'-6"	42'-6"	23'/27'	15	12	270	144	57	74	56	237	140	120	78
Picasso 4	3283	76'-6"	41'-7"	23'/27'	18	15	315	180	76	84	64	253	150	150	90
Picasso 5	3213	76'-6"	42'-0"	23'/27'	18	15	315	180	76	84	64	247	150	150	90
Picasso 6	3341	76'-6"	42'-6"	23'/27'	18	15	315	180	76	84	64	257	150	150	90
Picasso 7	10005	117'-10"	83'-7"	23'/27'	54	42	1044	616	129	165	96	770	540	480	324
Picasso 8	5175	117'-10"	42'-6"	23'/27'	27	21	540	266	109	132	96	398	270	210	162
Picasso 1 & 2	5911	69'-6"	83'-7"	23'/27'	30	24	612	320	89	116	64	455	300	240	180
Picasso 2 & 3	6055	69'-6"	84'-6"	23'/27'	30	24	612	320	89	116	64	466	300	240	180
Picasso 1, 2, 3	8997	69'-6"	126'-1"	23'/27'	50	40	1008	552	131	158	111	692	500	400	192
Picasso 4 & 5	6496	76'-6"	83'-7"	23'/27'	36	30	818	416	96	124	72	500	390	310	210
Picasso 5 & 6	6554	76'-6"	84'-6"	23'/27'	36	30	818	416	96	124	72	504	390	310	210
Picasso 4, 5, 6	9837	76'-6"	126'-1"	23'/27'	60	50	900	690	144	166	112	757	560	440	312
Picasso 3 & 6	6854	156'-0"	42'-6"	23'/27'	36	30	702	420	154	172	136	623	350	290	234
Picasso 2 & 5	6602	156'-0"	42'-0"	23'/27'	36	30	702	420	154	172	136	508	350	290	234
Picasso 1 & 4	6691	156'-0"	41'-7"	23'/27'	36	30	702	420	154	172	136	608	350	290	234
Picasso 3, 6, 8	12443	285'-4"	42'-6"	23'/27'	66	54	1269	833	276	288	264	957	650	530	390
Picasso 3, 6, 2, 5	13455	157'-6"	84'-6"	23'/27'	72	60	1476	828	166	196	136	1035	810	490	420
Picasso 2, 5, 4, 1	13293	157'-6"	83'-7"	23'/27'	72	60	1404	868	168	200	136	1023	780	490	474
Picasso 7 & 8	14766	117'-10"	126'-1"	23'/27'	90	72	1680	1144	152	204	112	1136	880	700	480
Picasso 4, 5, 6, 7, 8	25800	204'-6"	126'-1"	23'/27'	160	130	3000	1872	237	292	184	1985	1710	1450	1056
Picasso 1, 2, 3, 4, 5, 6	19873	157'-6"	126'-1"	23'/27'	120	100	2310	1472	489	244	136	1529	1320	1045	786
Promenade 1	2854	27'-4"	103'-1"	24'-0"	N/A	N/A	N/A	N/A	N/A	N/A	N/A	220	N/A	N/A	N/A
Promenade 2	4380	15'-6"	277'-5"	24'-0"	N/A	N/A	N/A	N/A	N/A	N/A	N/A	337	N/A	N/A	N/A
Promenade 3	2638	18'	140'-3"	24'-0"	N/A	N/A	N/A	N/A	N/A	N/A	N/A	203	N/A	N/A	N/A
Picasso Terrace	1891	19'-10"	104'-9"	NA	N/A	N/A	N/A	N/A	N/A	N/A	N/A	145	60	50	36
Degas Terrace	1223'	18'-7"	49'-5"	NA	N/A	N/A	N/A	N/A	N/A	N/A	N/A	94	N/A	N/A	N/A
Harborside Lawn 1	2025	30'-10"	71'-8"	NA	N/A	N/A	N/A	N/A	N/A	N/A	N/A	156	110	90	66
Harborside Lawn 2	2049	31'-8"	72'-4"	NA	N/A	N/A	N/A	N/A	N/A	N/A	N/A	158	110	90	66
South Lawn	21416	118'-7"	168'-7"	NA	N/A	N/A	N/A	N/A	N/A	N/A	N/A	1647	1200	920	552

SMALL MEETING ROOM CAPACITY CHART													*REFLECTS 6 CHAIRS AT A ROUND		
Meeting Room	Sq. Ft.	Width	Length	Ceiling Height	Theater	Classroom	U-Shape	Hollow Square	Conference	Reception	Plated Meal	Buffet Meal	Crescent Rounds		
Cezanne 1	1035	26'-0"	40'-3"	14'/16'	80	54	34	38	28	80	40	40	36		
Cezanne 2	1057	26'-4"	40'-7"	14'/16'	80	54	34	38	28	81	40	40	36		
Cezanne 1 & 2	2092	52'-4"	40'-7"	14'/16'	192	96	40	56	38	160	90	90	72		
Monet 1	1234	31'-0"	40'-7"	14'/16'	72	40	31	40	30	72	40	40	24		
Monet 2	1153	30'-0"	40'-7"	14'/16'	72	40	31	40	30	72	40	40	24		
Monet 3	1151	30'-0"	38'-11"	14'/16'	72	40	31	40	30	72	40	40	24		
Monet 1 & 2	2387	61'-0"	40'-7"	14'/16'	182	100	34	67	46	150	80	80	66		
Monet 2 & 3	2304	60'-0"	40'-7"	14'/16'	182	100	34	67	46	150	80	80	66		
Monet 1, 2, 3	3538	91'-0"	40'-7"	14'/16'	273	192	41	84	72	243	180	180	72		
Degas	1847	29'-4"	61'-3"	12'/14'	154	88	51	56	48	140	70	70	48		
Matisse	980	23'-0"	42'-5"	12'/14'	63	36	28	32	30	50	40	40	30		
Renoir 1	927	31'-0"	30'-7"	14'/16'	65	40	26	28	20	50	40	40	24		
Renoir 2	895	30'-0"	30'-7"	14'/16'	65	40	26	28	20	50	40	40	24		
Renoir 1 & 2	1822	61'-0"	30'-7"	14'/16'	120	80	36	38	48	110	80	80	48		
Van Gogh	824	26'-11"	30'-3"	14'/16'	66	36	28	28	20	56	40	30	24		
Gauguin Executive Board Room	N/A	N/A	N/A	N/A	N/A	N/A	N/A	N/A	16	N/A	N/A	N/A	N/A		

Elevated dining.

Encore Boston Harbor's restaurants and lounges offering casual fare to fine dining with specially curated menus suited to all palates.

Rare Steakhouse

Rare redefines the steakhouse experience in an elegant room with waterfront views and the finest cuts of international and domestic beef.



Rare Lounge

Offering classic and new interpretations of popular cocktails, approachable menu items and an intimate, locally sourced raw bar. Join us for pre-dinner drinks, enticing bites and after-dinner nightcaps.



Red 8

Red 8's diverse menu masterfully blends the flavors of China with Western technique to create singularly delicious cuisine. Along with Cantonese and dim sum classics, you will find flavors of Shanghai and Sichuan.



Elevated dining.

On Deck

Offering casual favorites and American classics, On Deck is sure to be a fan favorite.



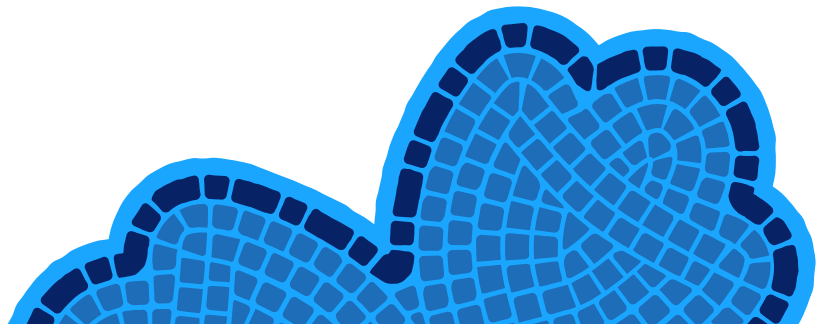
Cheese Meet Wine

Enjoy imported and domestic carved-to-order meats, fresh soft and hard cheeses and a curated wine list.



Night Shift Brewing Kitchen & Tap

Classic pub fare and an extensive list of Night Shift Brewing's locally crafted beers.



Elevated dining.

Fratelli

Southern Italian specialties via Boston's North End. Look for all the traditional favorites and save room for a cannoli.



Mystique

Enjoy shareable, Asian-inspired dishes and artful sushi in a seductive atmosphere against the backdrop of Boston's skyline.



Seamark Seafood & Cocktails | Old Wives' Tale

Adjacent to the resort's grand lobby, Seamark is a welcoming and luxurious restaurant by Carver Road Hospitality. Helmed by James Beard Award-Winning Chef Michael Schlow, the menu boasts a bounty of elevated New England seafood favorites, featuring the freshest pier-to-plate cold-water fish, lobster, and shellfish available. Hidden within Seamark, Old Wives' Tale is an intimate speakeasy with a nod to the nautical world.

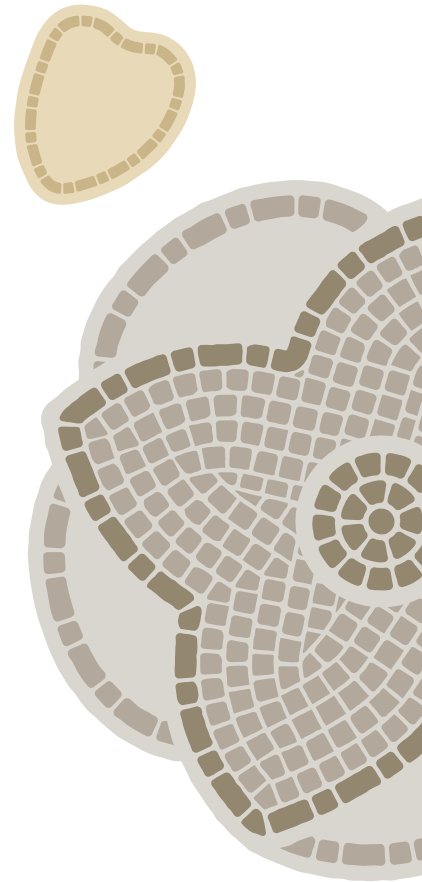
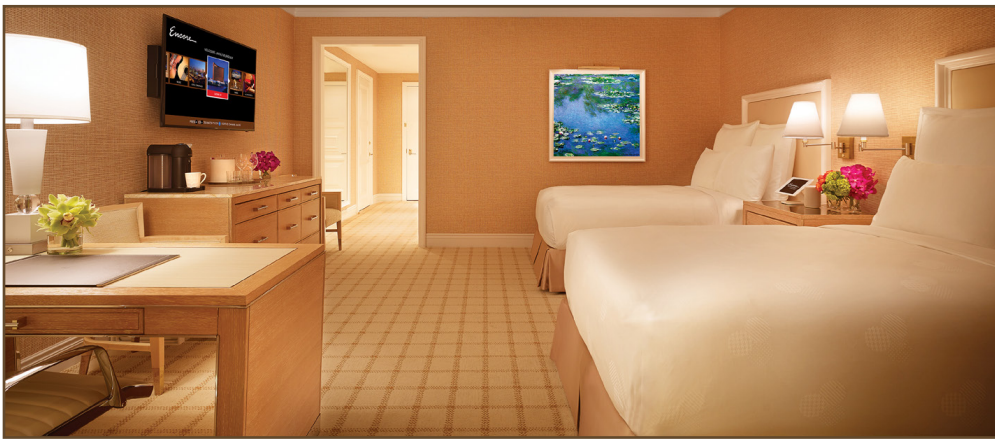


Elevated accommodations.

Encore Boston Harbor is a Forbes Travel Guide Five-Star resort with 671 well-appointed guest rooms including 104 expansive suites over 27 floors. The standard rooms are the largest in New England at 650-square-feet. Every accommodation comes outfitted with Encore Dream Beds and 507-thread-count 100-percent Egyptian cotton linens. Voice-controlled curtains and lighting, bedside consoles to charge devices and an Alexa virtual assistant in every room make these retreats ideal for rest and relaxation.

Premier Double | Harbor View Double

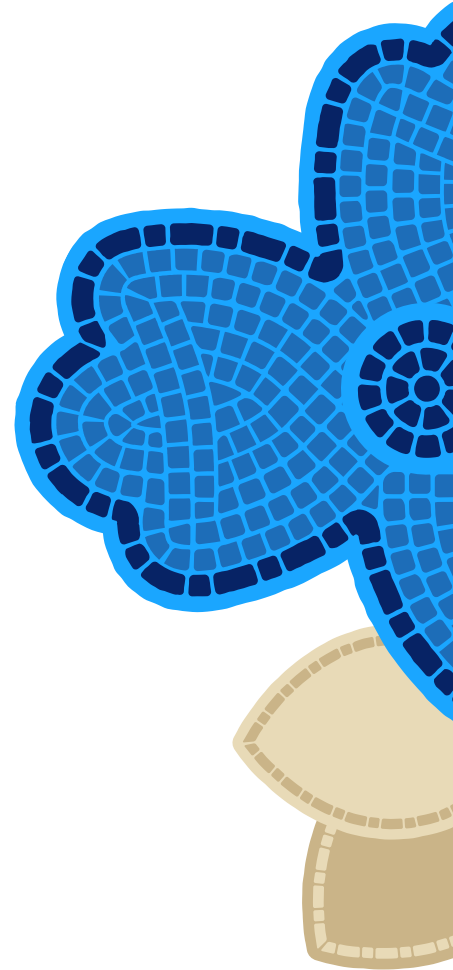
650-square-feet



Elevated accommodations.

Premier King | Harbor View King

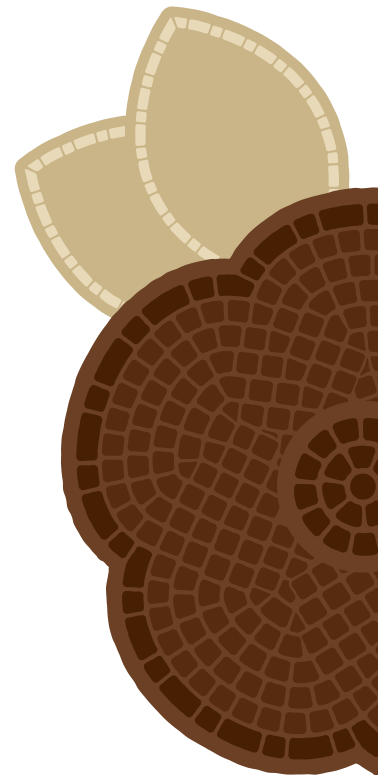
650-square-feet



Elevated accommodations.

Signature Suite | Harbor View Suite

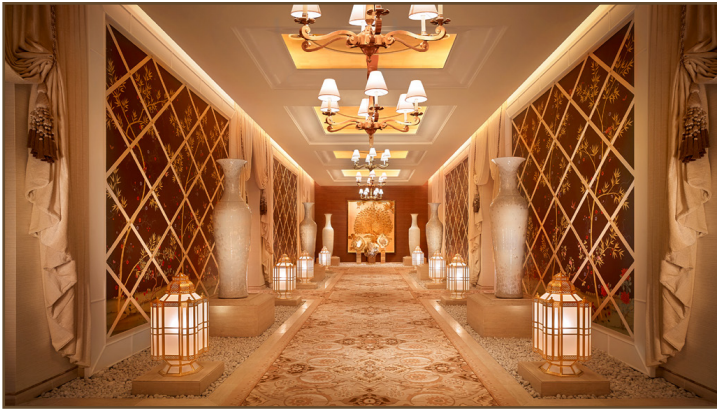
1,350-square-foot



Elevated amenities.

Experience the serene vibes in the 26,000-square-foot Forbes Travel Guide Five-Star Spa, Fitness Center and Salon. Massages, therapies and wellness treatments restore the mind and body, while haircuts, manicures and more provide the ultimate beauty experience. And if the day is not complete without a blood-pumping workout, the state-of-the-art equipment gets your heart rate up.

After a little self-care, indulge in retail therapy with five shops to peruse, including the latest ready-to-wear clothing and accessories from a roster of celebrated designers.



The Spa

The Spa provides an unparalleled experience of tailor-made massages, facials and body treatments from world-class providers. Spa amenities include deluge shower, steam room, sauna, hot plunge, cold plunge and relaxation lounges in the separate men and women facility and a co-ed tranquility lounge where we offer indulgent treats and refreshments.

The Salon

The Salon offers a full complement of cut, color, manicure, pedicure and makeup services for the ultimate beauty experience. Sit back and relax in our comfortable styling stations, while our experienced stylists and makeup artists create the look you want with great precision and care.



Wynn Collection

Wynn Collection is the ultimate five-star destination for a unique selection of women's designer clothing, accessories, and fashion jewelry. From classic to contemporary, formal to casual, Wynn Collection caters to every visitor for every occasion. Wynn Collection encompasses luxury, glamour and convenience. The best of Wynn Men's is now available in Wynn Collection.

Elevated partners.

Please consider utilizing one of our preferred partners for your event at Encore Boston Harbor.

DÉCOR

PBD Events

bridget@pbd-events.com
(781) 535-6305

Art of the Event

ericagifford@artoftheevent.com
(781) 670-9292

RENTALS

Party Rentals Ltd.

hollieh@partyrentalltd.com
(603) 707-6452

PEAK Event Services

kcole@peakeventservices.com
(833) 888-7325

AFR Event Furnishings

ebrown@rentfurniture.com
(781) 684-9900

Cort Furniture

stephanie.douglas@cort.com
(617) 785-2507

PHOTOGRAPHERS

Zev Fisher Photography

zev@zevfisher.com
(617) 797-9480

Person & Killian

jill@personkillian.com
(617) 236-1662

Binita Patel Photography

binita@binitapatelphotography.com
(617) 869-9344

Cheryl Richards Photography

cheryl@cherylrichards.com
(617) 424-7760

VIDEOGRAPHERS

Artistic Wedding Films

info@artisticweddingfilms.com
(877) 819-0923

Ready Set Film

jeff@readyssetfilm.com
(800) 806-9940

DMC

DPI Events

cara.pratt@csi-dmc.com
(978) 378-9963

Corinthian Events

courtney@corinthianevents.com
(617) 450-0600

NxtEvent

ally@nxtevent.com
(617) 904-9052

Access

lily.wilson@accessdmc.com
(617) 545-6410

MUSIC

Music Management

music@musicmanage.com
(617) 489-7600

Entertainment Specialists

steve@entertainmentspecialists.com
(617) 723-1115

STATIONARY

Fete Collection

eileen@shopfete.com
(857) 496-1350

WEDDING PLANNERS

Lolo Event Design

lo@loloeventdesign.com
(617) 838-5921

Marrero Events

paula@marreroevents.com
(978) 304-0773

JD Design

jcleedesigns@gmail.com
(857) 301-8709

CORPORATE EVENT PRODUCTION

Tiffany Beer Events

tiffany@tiffanybeerevents.com
(508) 340-1847

Czerlonka Productions

eric@czerlonkaproductions.com
(866) 292-1220 x100

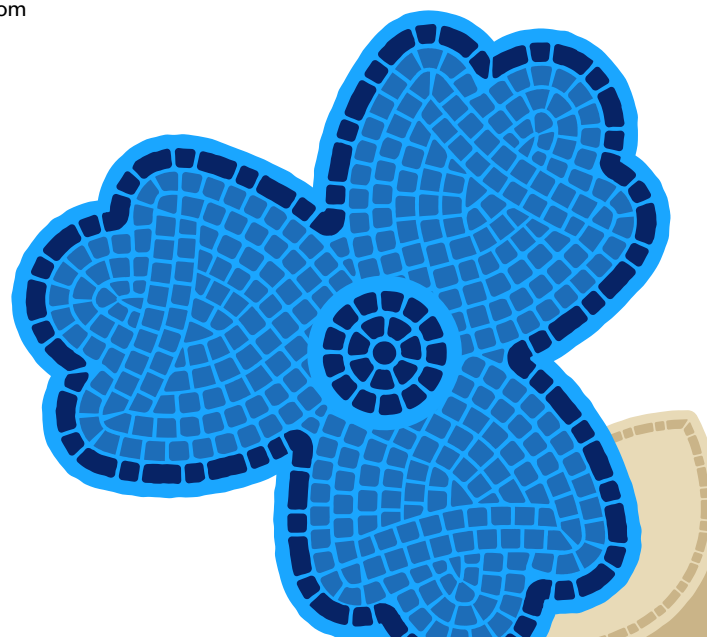
JUSTICE OF THE PEACE

Elizabeth Gemelli

elizabeth@justiceelizabeth.com
(781) 935-7081

Michael Backer

jp@mikebacker.com
(508) 481-7338



Frequently Asked Questions.

Who do I work with for AV?

We are proud to have our own Entertainment Production Services team bringing the newest and best equipment to life.

Can we utilize our own AV team?

Yes. However, we charge a percentage of the total for our labor to ensure everything is done correctly and most importantly, safely.

Can we use our own vendors?

All florals must be provided by our fabulous in-house floral team. We are happy to work with your event planner or design team to ensure we create exactly the vision you are looking for. You are welcome to utilize any vendors beyond that.

What fees are charged?

All food and beverage is subject to a 17% service fee and 8% admin fee. All room rentals, labor food and beverage and more is subject to a 7% state sales tax. Hotel rooms are subject to an 11.7% occupancy tax.

There is a \$750 per hour, per bar minimum spend for all consumption, cash and/or package bars. We require one bar per 100 guests.

What are your labor fees?

Bartenders: \$225++ (One per 100 guests)

Butler: \$225 (One per 50 guests)

Chef Attendant: \$225 (One per 75 guests)

Small Group Labor Fee: \$200 (Varies based on menus)

Do you allow outside caterers?

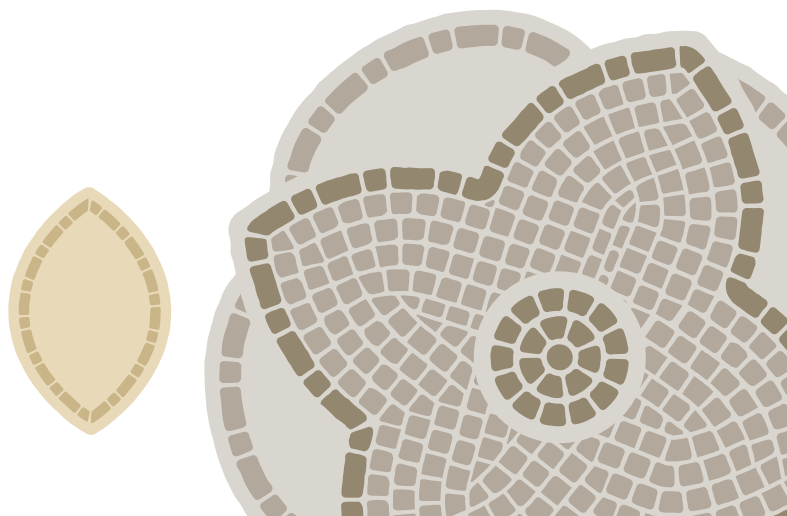
All food and beverage must be supplied by our Catering and Banquets team except for our approved Indian and Kosher caterers. Please inquire for additional information.

What are baggage and shipping fees?

Group arrivals are subject to a mandatory baggage handling charge of \$10 per person, one way.

Weight Cost

0-1 lbs.	\$17
0-10 lbs.	\$22
11-20 lbs.	\$32
21-30 lbs.	\$37
31-60 lbs.	\$42
61-80 lbs.	\$47
81-100 lbs.	\$67
101-150 lbs.	\$75
150 lbs. +	\$75 per 110 lbs.



Frequently Asked Questions.

What is your cancellation policy?

Should it be necessary for the group to cancel the event, the following policy concerning cancellation charges will apply.

Date cancellation notice received:

59 days to arrival 100% of anticipated revenue.

119 days to 60 days 75% of anticipated revenue.

179 days to 120 days 50% of anticipated revenue.

Signature date to 180 days 25% of anticipated revenue.

What is the fee for self-park and valet?

Self-Parking is complimentary for all guests, subject to availability.

If you plan on driving here, we offer convenient, indoor parking with direct access to our resort.

Valet parking service is available to all guests, subject to availability. Just pull up to our main entrance at the Porte Cochère, look for one of our valet attendants and leave the parking to us.

COST:

Wynn Rewards Members: **FREE**

Guests: **\$5**

How are room blocks handled?

We offer a courtesy room block of up to 10 rooms without a financial guarantee. Anything over 10 rooms requires a financial guarantee to pick-up the rooms

