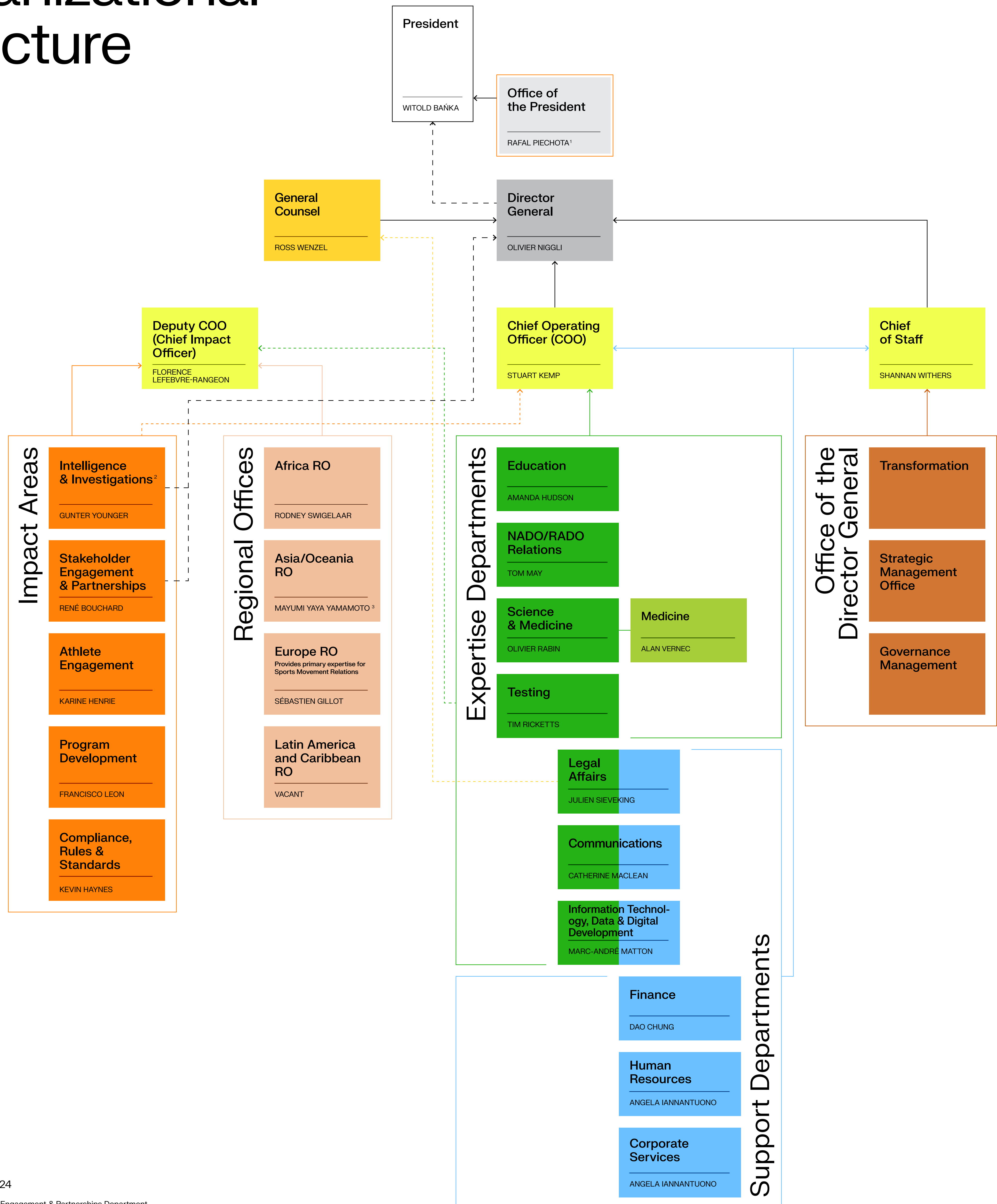


Organizational Structure



Effective 1 January 2024

¹ Also part of the Stakeholder Engagement & Partnerships Department.
² In keeping with WADA's [Investigation Policy](#), the Intelligence and Investigations Department operates independently from the rest of the Agency. It may run any investigation that it deems appropriate without seeking prior consent or approval of WADA's Executive Committee, Foundation Board, President or Director General.
³ Effective 1 March 2024