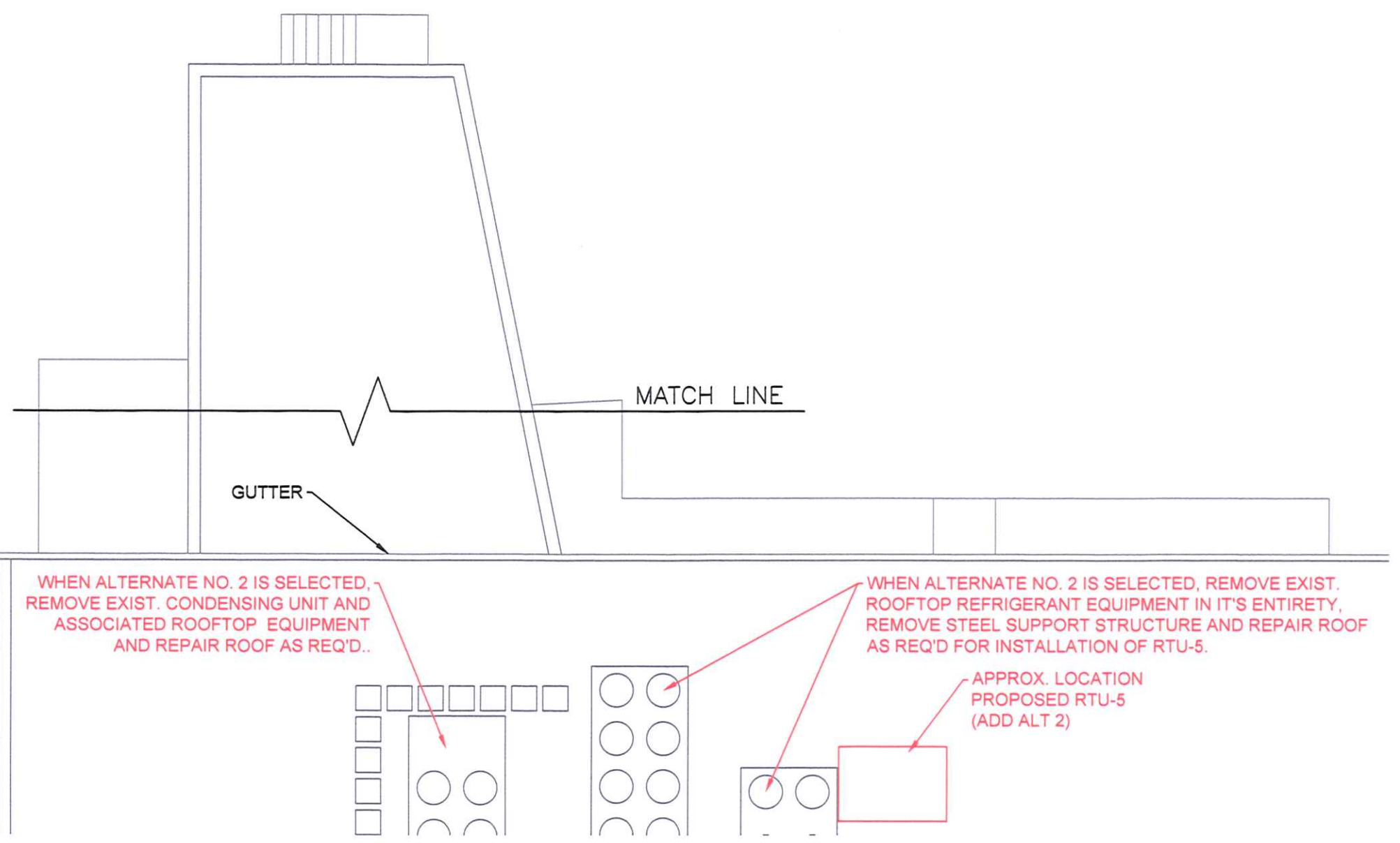
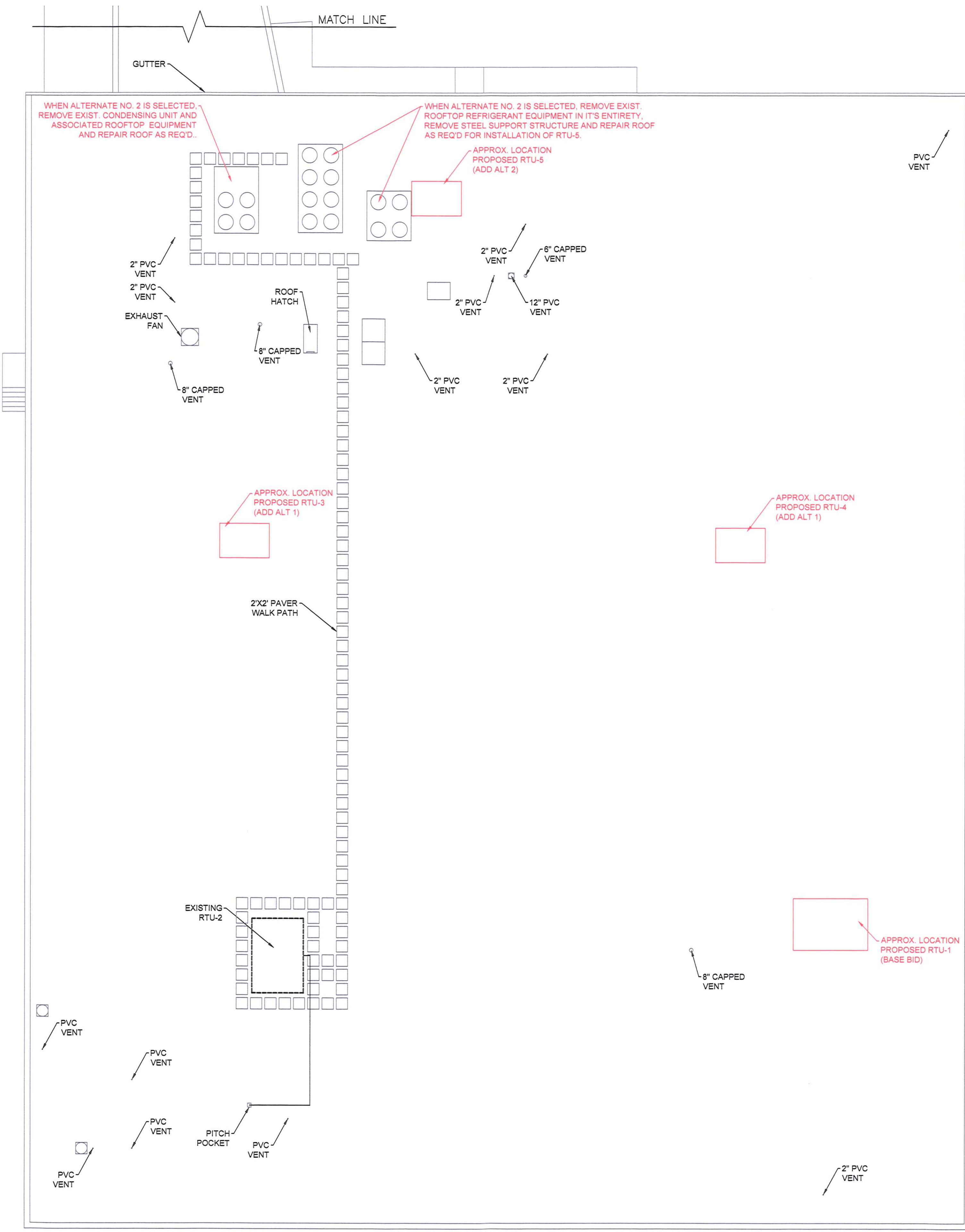






**MECHANICAL GENERAL NOTES:**  
 1. REMOVE EXISTING CONDENSING UNIT AND REFRIGERATION EQUIPMENT.

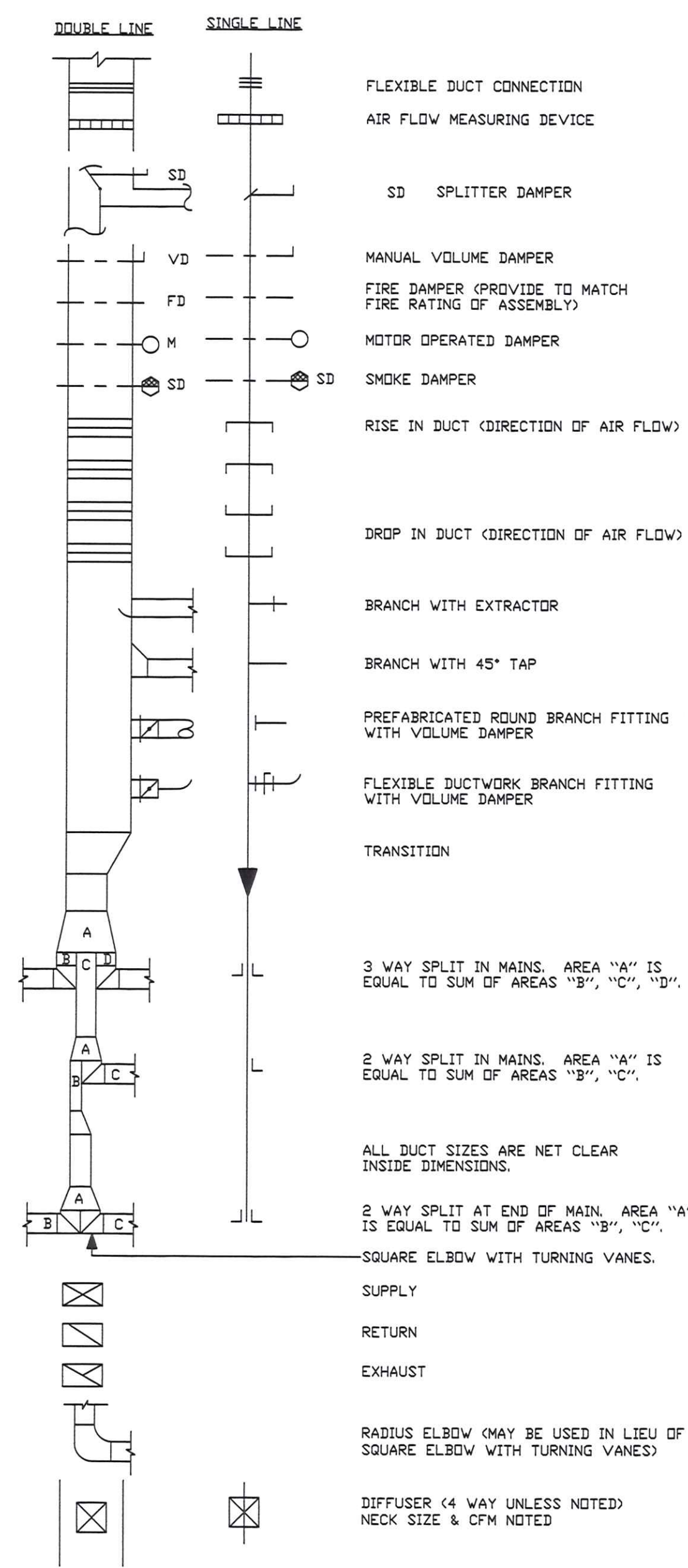


PROFESSIONAL CERTIFICATION. I HEREBY CERTIFY THAT THESE DOCUMENTS WERE PREPARED BY ME OR UNDER MY CLOSE PERSONAL SUPERVISION AND THAT I AM A LICENSED PROFESSIONAL ENGINEER UNDER THE LAWS OF THE STATE OF MARYLAND.  
 LICENSE NO. \_\_\_\_\_ EXPIRATION DATE: \_\_\_\_\_

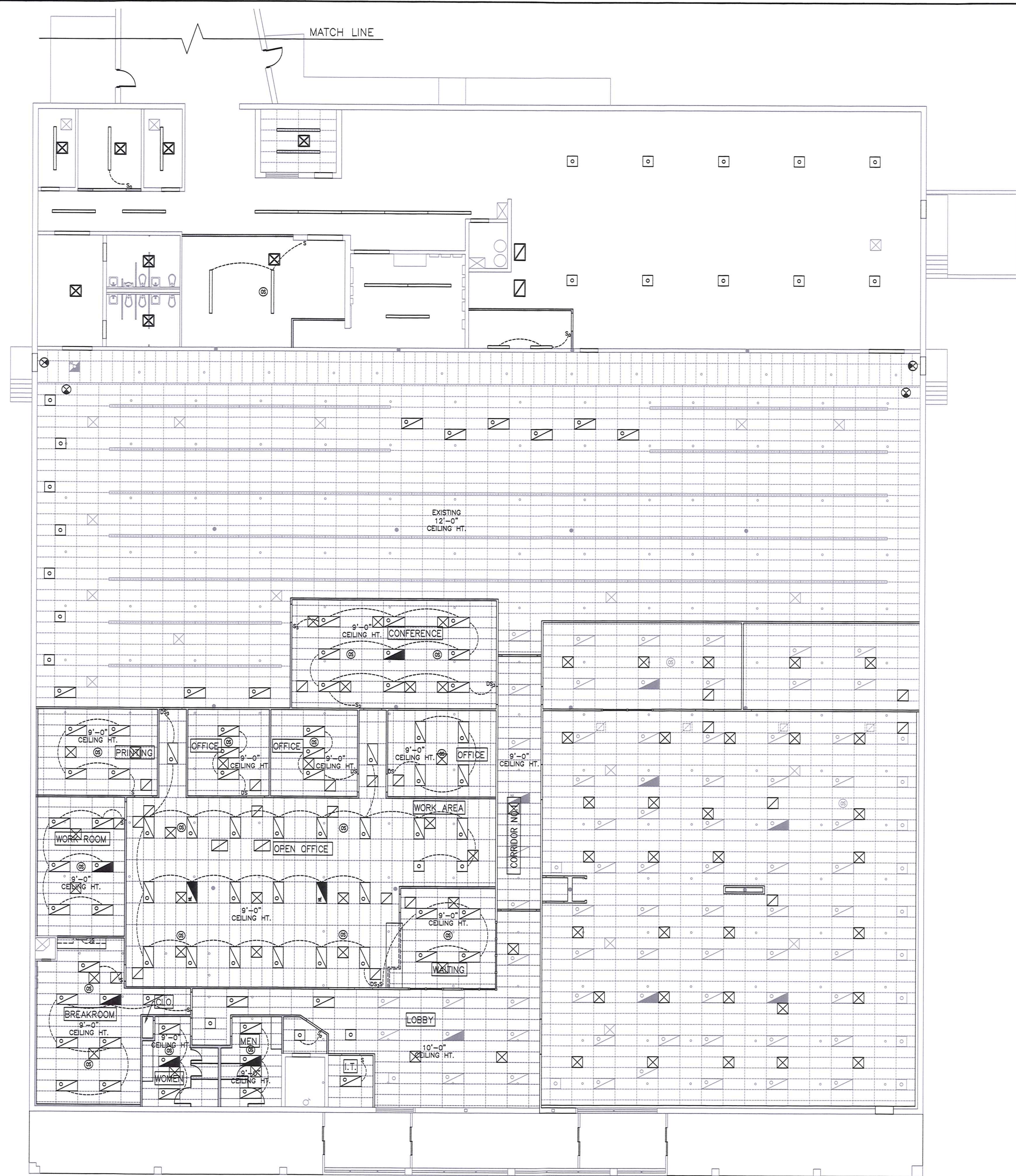
<b>WASHINGTON COUNTY, MARYLAND</b> DIVISION OF ENGINEERING Washington County Administrative Annex, Building 80 W. Baltimore St., Hagerstown, MD 21740 Phone: 240-313-2460 Fax: 240-313-2401		DESIGNED BY: DRAWN BY: CHECKED BY: DATE:	NO. REVISION DESCRIPTION BY DATE
<b>BOARD OF ELECTIONS</b> <b>ROOF PLAN</b> <b>17718 VIRGINIA AVENUE</b> <b>HAGERSTOWN, MD</b>		SCALE 3/32" = 1'-0"	SHEET NO. 1 OF 1
		PROJECT NO. 28-280	EXPIRATION DATE:







**DUCTWORK SYMBOLS**



PROFESSIONAL CERTIFICATION: I HEREBY CERTIFY THAT THESE DOCUMENTS WERE PREPARED BY ME AND THAT I AM A FULLY LICENSED PROFESSIONAL ENGINEER UNDER THE LAWS OF THE STATE OF MARYLAND.  
 LICENSE No. \_\_\_\_\_ EXPIRATION DATE: \_\_\_\_\_

**BOARD OF ELECTIONS  
 REFLECTED CEILING PLAN - PHASE 3  
 17718 VIRGINIA AVENUE  
 HAGERSTOWN, MD**

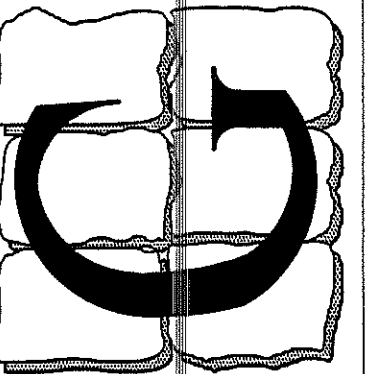
SCALE  
 3/32" = 1'-0"  
 SHEET NO.  
 3 OF 5  
 PROJECT NO.  
 28-280

**WASHINGTON COUNTY, MARYLAND  
 DIVISION OF ENGINEERING**  
 Washington County Administrative Annex, Building  
 80 W. Baltimore St., Hagerstown, MD 21740  
 Phone: 240-313-2400 Fax: 240-313-2401

DESIGNED BY:	NO.	REVISION DESCRIPTION	BY	DATE
DRAWN BY: JLA				
CHECKED BY: BG				
DATE: 04/07/2020				







Professional Certification  
I certify that these documents were prepared or approved by me, and that I am a duly licensed engineer under the laws of the State of Maryland.  
License Number: 14401  
Expiration Date: 4/21/2021

LESLIE SCOTT GRIM, P.E.  
DC PROF. ENG. NO. PE0050441  
DE PROF. ENG. NO. PE001201  
ME PROF. ENG. NO. 18915  
PA PROF. ENG. NO. PE002582  
HI PROF. ENG. NO. PE13943  
ND PROF. ENG. NO. 114401  
NC PROF. ENG. NO. 033394  
NJ PROF. ENG. NO. 38497  
NY PROF. ENG. NO. 075414  
VA PROF. ENG. NO. PE003535E  
VA PROF. ENG. NO. 023240  
WY PROF. ENG. NO. 10764

COMMERCIAL REGISTERS, GRILLES, & DIFFUSERS

MARK SEC. NOTES	DESCRIPTION	CFM SEE NOTES	NECK	BLOW	COLOR	MATERIAL	MANUFACTURER & MODEL NO.
D-1	24"X24" LAY-IN SUPPLY DIFFUSER	75 TO 125	6"Ø	4-W	WHITE	STEEL	KRUEGER MODEL #1400F23 W/ INTERGRAL ROUND NECK COLLAR AND PRN100 DAMPER
D-2	24"X24" LAY-IN SUPPLY DIFFUSER	130 TO 210	8"Ø	4-W	WHITE	STEEL	KRUEGER MODEL #1400F23 W/ INTERGRAL ROUND NECK COLLAR AND PRN100 DAMPER
D-3	24"X24" LAY-IN SUPPLY DIFFUSER	215 TO 300	10"Ø	4-W	WHITE	STEEL	KRUEGER MODEL #1400F23 W/ INTERGRAL ROUND NECK COLLAR AND PRN100 DAMPER
D-4	24"X24" LAY-IN SUPPLY DIFFUSER	305 TO 425	12"Ø	4-W	WHITE	STEEL	KRUEGER MODEL #1400F23 W/ INTERGRAL ROUND NECK COLLAR AND PRN100 DAMPER
D-5	24"X24" LAY-IN SUPPLY DIFFUSER	500 TO 1000	14"Ø	4-W	WHITE	STEEL	KRUEGER MODEL #1400F23 W/ INTERGRAL ROUND NECK COLLAR AND PRN100 DAMPER
D-6	CEILING SURFACE MOUNTED SUPPLY DIFFUSER	50 TO 100	6"X6"	4-W	WHITE	STEEL	KRUEGER MODEL#SH4 F22 DBD (ROUND TO SQUARE ADAPTER MAY BE REQUIRED SEE PLAN)
D-7	CEILING SURFACE MOUNTED SUPPLY DIFFUSER	110 TO 225	9"X9"	4-W	WHITE	STEEL	KRUEGER MODEL#SH4 F22 DBD (ROUND TO SQUARE ADAPTER MAY BE REQUIRED SEE PLAN)
D-8	CEILING SURFACE MOUNTED SUPPLY DIFFUSER	200 TO 400	12"X12"	4-W	WHITE	STEEL	KRUEGER MODEL#SH4 F22 DBD (ROUND TO SQUARE ADAPTER MAY BE REQUIRED SEE PLAN)
D-9	CEILING SURFACE MOUNTED SUPPLY DIFFUSER	310 TO 625	15"X15"	4-W	WHITE	STEEL	KRUEGER MODEL#SH4 F22 DBD (ROUND TO SQUARE ADAPTER MAY BE REQUIRED SEE PLAN)
D-10	CEILING SURFACE MOUNTED SUPPLY DIFFUSER	450 TO 900	18"X18"	4-W	WHITE	STEEL	KRUEGER MODEL#SH4 F22 DBD (ROUND TO SQUARE ADAPTER MAY BE REQUIRED SEE PLAN)
D-11	24"X24" LAY-IN PERFORATED SUPPLY DIFFUSER	UP TO 125	6"Ø	4-W	WHITE	STEEL	KRUEGER MODEL#604 (ROUND TO SQUARE ADAPTER MAY BE REQUIRED SEE PLAN)
D-12	24"X24" LAY-IN PERFORATED SUPPLY DIFFUSER	125 TO 230	8"Ø	4-W	WHITE	STEEL	KRUEGER MODEL#604 (ROUND TO SQUARE ADAPTER MAY BE REQUIRED SEE PLAN)
D-13	24"X24" LAY-IN PERFORATED SUPPLY DIFFUSER	230 TO 350	10"Ø	4-W	WHITE	STEEL	KRUEGER MODEL#604 (ROUND TO SQUARE ADAPTER MAY BE REQUIRED SEE PLAN)
D-14	4'-0" LINEAR SLOT DIFFUSER	300 TO 400	12' DVAL	2-W	WHITE	-	KRUEGER MODEL#PTBS-Y-48-3 -12-100-50-02
G-1	COMMERCIAL SIDE WALL SUPPLY REGISTER	75 TO 110	8"X4"	2-W	WHITE	STEEL	KRUEGER MODEL #880V0BD
G-2	COMMERCIAL SIDE WALL SUPPLY REGISTER	110 TO 140	10"X4"	2-W	WHITE	STEEL	KRUEGER MODEL #880V0BD
G-3	COMMERCIAL SIDE WALL SUPPLY REGISTER	140 TO 170	12"X4"	2-W	WHITE	STEEL	KRUEGER MODEL #880V0BD
G-4	COMMERCIAL SIDE WALL SUPPLY REGISTER	170 TO 220	10"X6"	2-W	WHITE	STEEL	KRUEGER MODEL #880V0BD
G-5	COMMERCIAL SIDE WALL SUPPLY REGISTER	220 TO 265	12"X6"	2-W	WHITE	STEEL	KRUEGER MODEL #880V0BD
G-6	COMMERCIAL SIDE WALL SUPPLY REGISTER	265 TO 310	14"X6"	2-W	WHITE	STEEL	KRUEGER MODEL #880V0BD
G-7	COMMERCIAL SIDE WALL SUPPLY REGISTER	310 TO 355	16"X6"	2-W	WHITE	STEEL	KRUEGER MODEL #880V0BD
G-8	COMMERCIAL SIDE WALL SUPPLY REGISTER	355 TO 450	20"X6"	2-W	WHITE	STEEL	KRUEGER MODEL #880V0BD
G-9	COMMERCIAL SIDE WALL SUPPLY REGISTER	450 TO 610	20"X8"	2-W	WHITE	STEEL	KRUEGER MODEL #880V0BD
G-10	LINEAR BAR GRILLE	600 TO 800	60"X8"	2-W	-	-	KRUEGER MODEL #1800-60-8-P-00-X -XX-0-15
R-1	24"X24" LAY-IN RETURN GRILLE	100 TO 200	8"Ø	N/A	WHITE	ALUM	KRUEGER MODEL #S80H5FFF23 #3
R-2	24"X24" LAY-IN RETURN GRILLE	200 TO 400	10"Ø	N/A	WHITE	ALUM	KRUEGER MODEL #S80H5FFF23 #3
R-3	24"X24" LAY-IN RETURN GRILLE	400 TO 800	12"Ø	N/A	WHITE	ALUM	KRUEGER MODEL #S80H5FFF23 #3
R-4	24"X24" LAY-IN RETURN GRILLE	800 TO 1200	16"Ø	N/A	WHITE	ALUM	KRUEGER MODEL #S80H5FFF23 #3
R-5	24"X24" LAY-IN RETURN GRILLE	1200 TO 1500	20"X20"	N/A	WHITE	ALUM	KRUEGER MODEL #S80H5FFF23 #3
R-6	24"X48" LAY-IN RETURN GRILLE	2000 TO 3000	22"X22"	N/A	WHITE	ALUM	KRUEGER MODEL #S80H5FFF23 #3
R-7	24"X48" LAY-IN RETURN GRILLE	3000 TO 5000	22"X32"	N/A	WHITE	ALUM	KRUEGER MODEL #S80H5FFF23 #3
R-8	COMMERCIAL SURFACE MOUNTED RETURN GRILLE	200 TO 300	12"X6"	N/A	WHITE	STEEL	KRUEGER MODEL #S80H #3
R-9	COMMERCIAL SURFACE MOUNTED RETURN GRILLE	300 TO 600	12"X12"	N/A	WHITE	STEEL	KRUEGER MODEL #S80H #3
R-10	COMMERCIAL SURFACE MOUNTED RETURN GRILLE	600 TO 900	18"X12"	N/A	WHITE	STEEL	KRUEGER MODEL #S80H #3
R-11	COMMERCIAL SURFACE MOUNTED RETURN GRILLE	900 TO 1200	18"X18"	N/A	WHITE	STEEL	KRUEGER MODEL #S80H #3
R-12	COMMERCIAL SURFACE MOUNTED RETURN GRILLE	1200 TO 1600	24"X20"	N/A	WHITE	STEEL	KRUEGER MODEL #S80H #3
R-13	COMMERCIAL SURFACE MOUNTED RETURN GRILLE	1600 TO 2400	24"X24"	N/A	WHITE	STEEL	KRUEGER MODEL #S80H #3
R-14	COMMERCIAL SURFACE MOUNTED RETURN GRILLE	2500 TO 3200	30"X48"	N/A	-	ALUM	KRUEGER MODEL #S580-H-30-40-F22-01-15
R-15	24"X24" LAY-IN PERFORATED RETURN GRILLE	UP TO 1600	24"X24"	N/A	WHITE	STEEL	KRUEGER MODEL #6790 F-3 #3

- EXACT CFMS DESIGNATED ON PLAN AT DIFFUSER LOCATION.
- REGISTERS, GRILLES, AND DIFFUSERS DESIGNATIONS MAY APPEAR ON SCHEDULE BUT MAY NOT BE UTILIZED ON THE PLAN. REFER TO PLAN FOR QUANTITY AND DESIGNATION.
- REFER TO PLAN TO DETERMINE IF FILTERS ARE REQUIRED IN RETURN GRILLES, PROVIDE APPROPRIATE STYLE /MODEL TO ACCOMMODATE FILTERS.

RTU Schedule

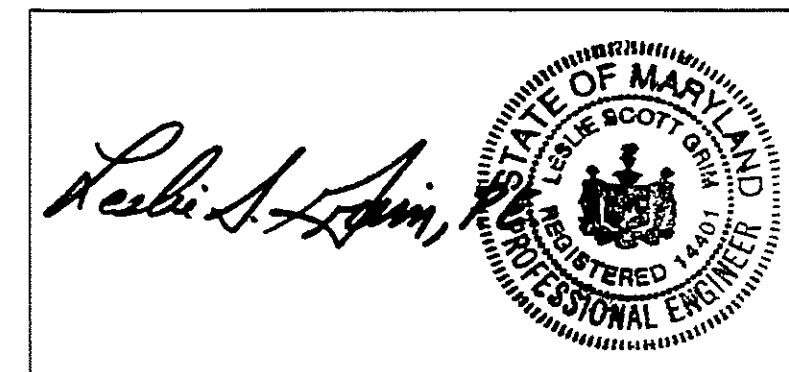
Tag #	Model Number	Brand	Supply Air Blower					Cooling				Heating				Electrical				Weight	Remarks								
			CFM		HP	ESP (IWG)	Blwr RPM	Temperature (F)				Stages	Circuits	EER	IEER	Temp (F)		Heating Gas				Voltage	MCA	Max Fuse	Alt (Ft)				
			SA	OA				Ent. Air DB	Lvg. Air WB	OD Amb	Total					Sens.	Ent. DB	Lvg. DB	MBH In							MBH Out			
RTU-1	Z1240N40R2B6ACA1A1	York	8000	1302	7.50	0.8	942	78.3	65.0	55.7	54.8	95.0	247.7	195.0	4	4	11.0	12.5	80.0	97.0	320.0	400.0	320.0	208-3-60	106.2	125	0.0	3132	1.2,3,5,7,9,10
RTU-2	Z1180N30R2B6ACA1A1	York	6000	750	5.00	0.8	1018	77.5	64.3	55.6	54.1	95.0	181.3	142.1	4	4	12.2	14.0	80.0	97.0	240.0	300.0	240.0	208-3-60	87.7	100	0.0	2899	1.2,3,5,7,9,10
RTU-3	Z1120N24R2B6ACA1A2	York	4000	400	3.00	0.5	1136	77.0	63.9	53.7	53.4	95.0	123.6	100.8	2	2	12.0	14.6	60.0	104.4	192.0	240.0	192.0	208-3-60	55.4	60	0.0	1275	1.2,3,7,9,10
RTU-4	Z1120N24R2B6ACA1A2	York	4000	400	3.00	0.5	1136	77.0	63.9	53.7	53.4	95.0	123.6	100.8	2	2	12.0	14.6	60.0	104.4	192.0	240.0	192.0	208-3-60	55.4	60	0.0	1275	1.2,3,7,9,10
RTU-5	Z1120N24R2B6ACA1A2	York	4000	400	3.00	0.8	1195	77.0	63.9	53.7	53.4	95.0	123.6	100.8	2	2	12.0	14.6	60.0	104.4	192.0	240.0	192.0	208-3-60	55.4	60	0.0	1275	1.2,3,7,9,10

MECHANICAL PLANE KEYED NOTES (SEE SHEET M-1)

- ① TRANSFER RETURN ASSEMBLY 2EA R-3 + 12Ø DUCT.

Digitally signed  
by Leslie S. Grim  
Date: 2020.11.23  
12:44:31 -05'00'

*Leslie S. Grim, P.E.*



REV. DATE

COMMENT

DRAWN BY: LSG

M-2.0

OF 2 SHEETS

DATE: NOV. 23, 2020