



ADDENDUM NO. 1

TO: Interested Parties

FROM: Brennan Garrett, Senior Architectural Project Manager
Division of Engineering

DATE: Thursday, May 27, 2021

PROJECT: Senior Center Activity Building Plumbing Renovation

Acknowledge receipt of this **Addendum No. 1** by signing in the space provided below and returning with your Bid.

Failure to sign and return with your Bid may subject the Bidder to disqualification. This **Addendum No. 1** forms a part of the Bid Documents, it supplements and modifies them as outlined herein.

This **Addendum No. 1** consists of **12** pages, including this page and all attachments.

I hereby acknowledge receipt of **Addendum No. 1**:

By: _____ Date _____
Signed Name

Typed Name

Title

For (Firm): _____

Phone Number: _____

ADDENDUM NO. 1
Page 1 of 5

ADDENDUM NO. 1

SENIOR CENTER ACTIVITY BUILDING PLUMBING RENOVATION

Date Issued: Thursday, May 27, 2021

Bids Due: **Friday, June 4, 2021**
2:00 p.m., Local Time

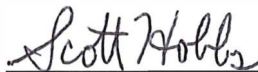
The following addendum material is hereby made a part of the Bid Documents.

Please note the following changes, information, and/or instructions in connection with the proposed work and submit proposals accordingly.



Brennan Gan-ett
Senior Architectural Project Manager
Division of Engineering

By Authority of:
Board of County Commissioners
Washington County, Maryland



Scott Hobbs, P.E.
Director
Division of Engineering

ADDENDUM NO. 1

SENIOR CENTER ACTIVITY BUILDING PLUMBING RENOVATION

TO: All prime Contractors and all others to whom specifications have been issued.

ITEM 1.01 BID QUESTIONS & RESPONSES:

Inquiry No. 1: . Are there any documents/plans and specifications that could be emailed to me?

Response: Documents, plans, addenda, plan holders list and bid tabulation are available on the Washington County Engineering website at <https://www.washco-md.net/engineering/engin-bid-list/>.

Inquiry No. 2: . Is there a budget amount available to the public?

Response: This project classification is Cost Group Letter Class “A,” \$0 up to \$100,000.

Inquiry No. 3: . Are there any union/labor requirements?

Response: No.

Inquiry No. 4: . -Is there a start date set for work to begin?

Response: Notice to Proceed for the underground portion of the work is anticipated to be issued on or about the end of June 2021.

Inquiry No. 5: . Is there a planholders list available that could be emailed to me?

Response: Please refer to the response provided for Inquiry No. 1.

Inquiry No. 6: [thirty (30) consecutive calendar days = approximately 20-21 weekdays]

Based on the above-listed construction schedule, will Washington County add working days to this schedule if:

a) our personnel cannot proceed due to delays by other contractors and/or owner delays (exterior excavation, sanitary sewer tap, interior concrete patching, interior wall construction and finishing, etc.)?

Response: The bidder must agree to commence work within (10) calendar days of receipt of written “Notice to Proceed” by the County and to fully complete the underground portion of the project within 30 consecutive calendar days thereafter.

ADDENDUM NO. 1

SENIOR CENTER ACTIVITY BUILDING PLUMBING RENOVATION

b) we encounter real and imminent construction material delays which are affecting the industry in general?

Response: The successful contractor will not be held responsible for circumstances beyond its control.

Inquiry No. 7: Please furnish the “plans” as referenced in Scope of Work (SOW) that show locations of interior and exterior cleanouts.

Response: Plans referenced in the Summary of work have been attached to this addendum as requested. (See attachment No. 1.)

Inquiry No. 8: Please show the proposed new location of existing overhead water piping. This piping shall be relocated as referenced in SOW. Is the existing overhead water line branch that goes to the existing outdoor hydrant, remaining in its present location?

Response: The existing outdoor hydrant shall remain in place and shall remain fully functional. The existing water line that runs parallel to the existing roof joists shall be relocated a minimum of three joist bays closer to the storefront side of the building to allow for installation of a new roof top HVAC unit.

Inquiry No. 9: Do “all associated PVC roof repairs”, as mentioned in the SOW, pertain to the one (1) and only plumbing vent that penetrates the roof?

Response: While only one plumbing vent roof penetration is anticipated, the successful contractor will be required to provide PVC roof repairs for any new plumbing vent roof penetrations.

Inquiry No. 10: Is there an existing warranty on this building roof?

Response: The manufacturer’s warranty is still in effect for the PVC membrane material.

Inquiry No. 11: SOW states: bi-level refrigerated electric water cooler with bottle filler. Attachment 4 shows a bi-level non-refrigerated electric water cooler with bottle filler. Please advise whether this water cooler shall be refrigerated or non-refrigerated.

Response: The water cooler will be filtered and refrigerated. A revised “P-6” fixture specification sheet has been provided with this addendum. (See attachment No. 2)

ADDENDUM NO. 1

SENIOR CENTER ACTIVITY BUILDING PLUMBING RENOVATION

Inquiry No. 12: Will electrical power wiring, specialties and devices for the water heaters and the electric water cooler, be furnished and installed *by others*?

Response: Washington County will be responsible for electrical power wiring and disconnects as may be required.

Inquiry No. 13: Due to the size of this project, is a Bid Security (Bond) required?

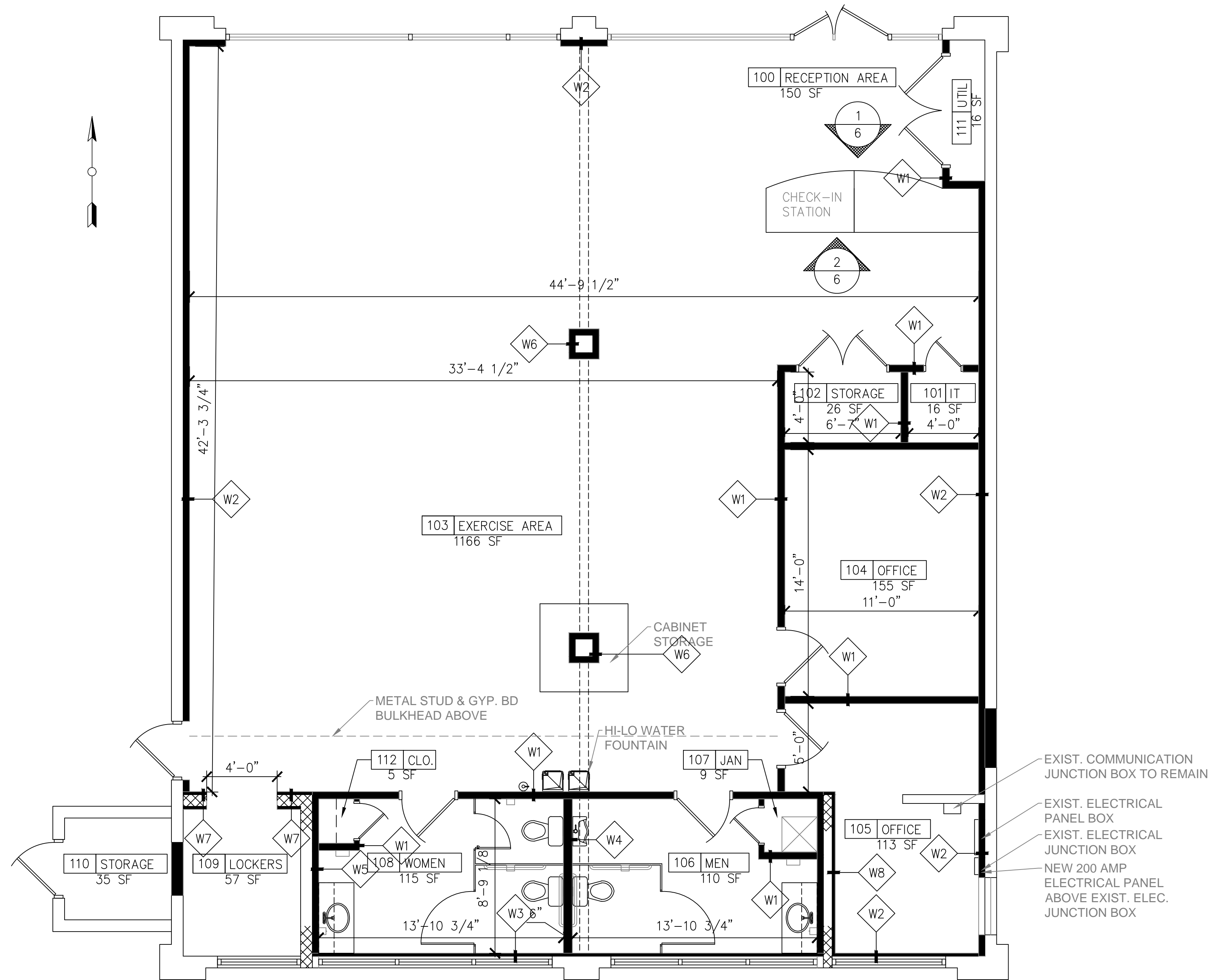
Response: Bidders are not required to submit a bid security with their bids.

Attachments:

Plumbing Drawings (2 pages)

END OF ADDENDUM NO. 1

ATTACHMENT NO. 1



PROPOSED FLOOR PLAN
1/4" = 1'-0"

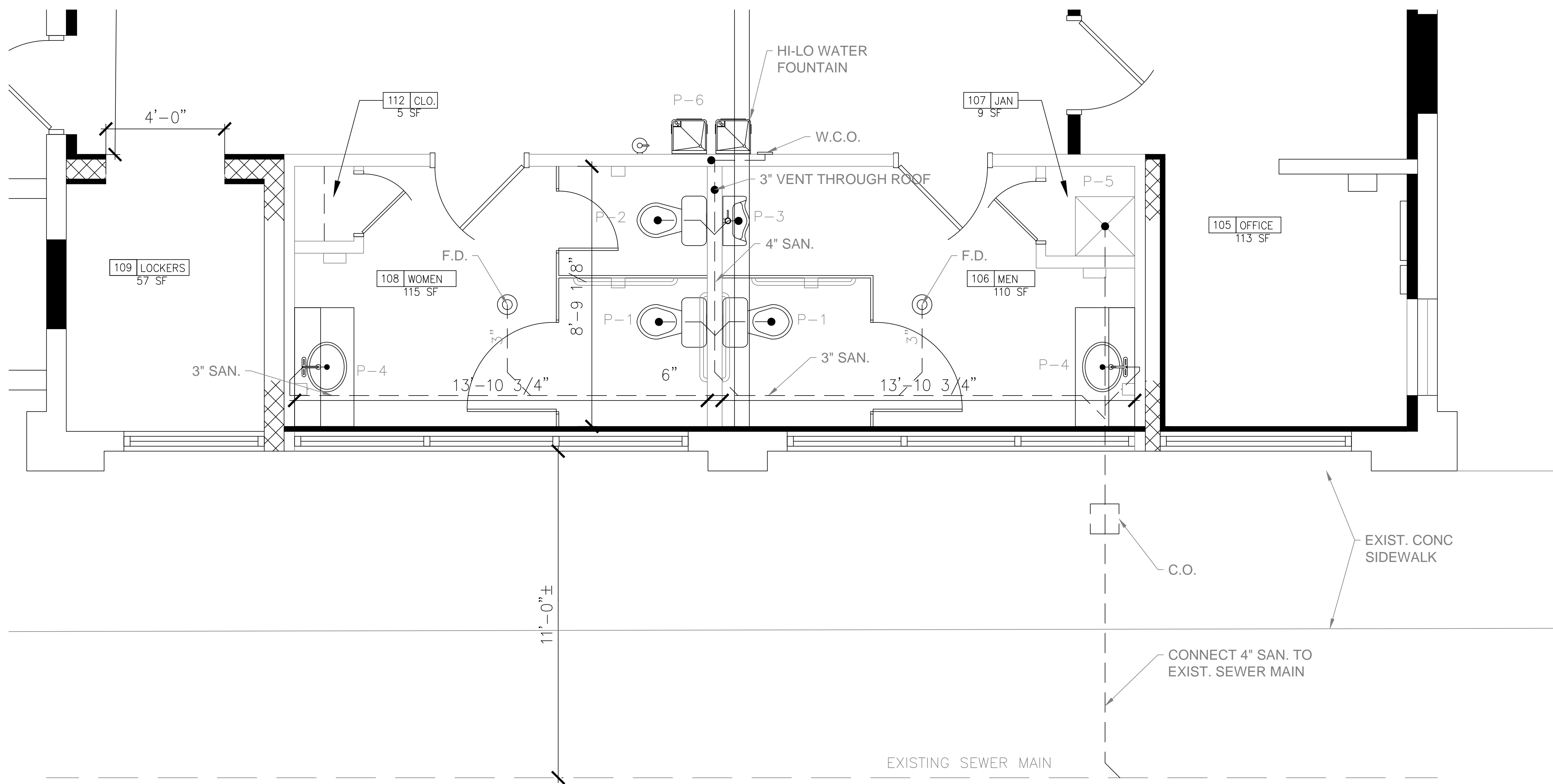
WALLTYPES AND PARTITIONS		
W1		- 5/8" GYP BD - 3 5/8" MTL STUDS @ 16" OC - W/3" SOUND BATT INSULATION - 5/8" GYP BD
W2		- 5/8" GYP BD - 3 5/8" MTL STUDS @ 16" OC - 2" RIGID INSULATION BOARD - 5/8" GYP BD
W3		- 5/8" GYP BD - MTL FURING STRIPS @ 16" OC - EXIST. BLOCK WALL
W4		- 5/8" GYP BD - 6" MTL STUDS @ 16" OC - W/6" SOUND BATT INSULATION - 5/8" GYP BD
W5		- 5/8" GYP BD - 3 5/8" MTL STUDS @ 16" OC - W/3" SOUND BATT INSULATION - EXIST. BLOCK WALL
W6		- 5/8" GYP BD - 3 5/8" MTL STUDS @ 16" OC
W7		- 5/8" GYP BD - MTL FURING STRIPS @ 16" OC - EXIST. BLOCK WALL - MTL FURING STRIPS @ 16" OC - 5/8" GYP BD
W8		- 5/8" GYP BD - MTL FURING STRIPS @ 16" OC - EXIST. BLOCK WALL - 3 5/8" MTL STUDS @ 16" OC - W/3" SOUND BATT INSULATION - 5/8" GYP BD

NEW METAL STUD WALLS - SEE CHART ABOVE FOR WALL TYPES

- EXIST. COMMUNICATION JUNCTION BOX TO REMAIN
- EXIST. ELECTRICAL PANEL BOX
- EXIST. ELECTRICAL JUNCTION BOX
- NEW 200 AMP ELECTRICAL PANEL ABOVE EXIST. ELEC. JUNCTION BOX

PROFESSIONAL CERTIFICATION: I HEREBY CERTIFY THAT THESE DOCUMENTS WERE PREPARED OR APPROVED BY ME, AND THAT I AM A FULLY LICENSED PROFESSIONAL ENGINEER UNDER THE LAWS OF THE STATE OF MARYLAND.
LICENSE NO. _____ EXPIRATION DATE: _____

DESIGNED BY: DRAWN BY: CHECKED BY: DATE:	NO.	REVISION DESCRIPTION	BY	DATE
WASHINGTON COUNTY, MARYLAND DIVISION OF ENGINEERING & CONSTRUCTION MANAGEMENT 				
WASHINGTON COUNTY SENIOR ACTIVITIES CENTER & COMMISSION ON AGING OFFICES FLOOR PLAN SENIOR ACTIVITIES CENTER				
SCALE 1/4"=1'-0"				
SHEET NO. 3 OF 8				
PROJECT NO.				



PARTIAL PLUMBING PLAN
1/2" = 1'-0"

PROFESSIONAL CERTIFICATION. I HEREBY CERTIFY THAT THESE DOCUMENTS WERE PREPARED OR APPROVED BY ME, AND THAT I AM A DULY LICENSED PROFESSIONAL ENGINEER UNDER THE LAWS OF THE STATE OF MARYLAND.
LICENSE NO. _____ EXPIRATION DATE: _____

WASHINGTON COUNTY SENIOR ACTIVITIES CENTER & COMMISSION ON AGING OFFICES
PARTIAL PLUMBING PLAN
SENIOR ACTIVITIES CENTER

WASHINGTON COUNTY, MARYLAND
DIVISION OF ENGINEERING & CONSTRUCTION MANAGEMENT
Washington County Administrative Annex, Building 100
10000 Washington Blvd
Phone: 240-313-2460 Fax: 240-313-2401

SCALE
1/2"=1'-0"
SHEET NO.
8 OF 8
PROJECT NO.

DESIGNED BY:	NO.	REVISION DESCRIPTION	BY	DATE
DRAWN BY: J.L.A.				
CHECKED BY: B.J.G.				
DATE: 10-16-2020				

ATTACHMENT NO. 2

Elkay ezH2O Bottle Filling Station with Mechanically Activated Bi-Level ADA Cooler Filtered Refrigerated Light Gray Model LMABFTL8WSLK



PRODUCT SPECIFICATIONS

Elkay ezH2O® Bottle Filling Station with Mechanically Activated, Bi-Level ADA Cooler Filtered Refrigerated Light Gray. Chilling Capacity of 8.0 GPH (gallons per hour) of 50° F drinking water, based on 80° F inlet water and 90° F ambient, per ASHRAE 18 testing. Features shall include Antimicrobial, Filtered, Green Ticker™, Hands Free, Laminar Flow, Mechanically Activated, Real Drain, Visual Filter Monitor. Furnished with Flexi-Guard® Safety Bubbler. Electronic Bottle Filler Sensor with Mechanical Front and Side Bubbler Pushbar activation. Product shall be Wall Mount (On Wall), for Indoor applications, seNing 2 station(s). Unit shall be certified to UL 399 and CAN/CSA C22.2 No. 120. Unit shall be lead-free design which is certified to NSF/ANSI 61 & 372 (lead free) and meets Federal and State low-lead requirements.



Special Features:	Antimicrobial, Filtered, Green Ticker™, Hands Free, Laminar Flow, Mechanically Activated, Real Drain, Visual Filter Monitor
Finish:	Light Gray Granite
Power:	115V/60Hz
Bubbler Style:	Flexi-Guard® Safety Bubbler
Activation by:	Electronic Bottle Filler Sensor with Mechanical Front and Side Bubbler Pushbar
Mounting Type:	Wall Mount (On Wall)
Chilling Capacity*:	8.0 GPH
Full Load Amps	6
Rated Watts:	370
Dimensions (L x W x H):	36-1/4" X 18-5/8" X 46-1/4"
Approx. Shipping Weight:	104 lbs.
Installation Location:	Indoor
No. of Stations Served:	2
*Based on 80° F inlet water & 90° F ambient air temp for 50° F chilled drinking water.	

- Mechanically-Activated bubbler continues to supply water in event of seNice disruptions.
- Visual Filter Monitor: LED Filter Status Indicator for when filter change is necessary.
- Filter is certified to NSF 42 and 53 for lead, particulate, chlorine, taste and odor reduction. 3,000 gal. capacity.
- Green Ticker: Informs user of number of 20 oz. plastic water bottles saved from waste.
- Laminar flow provides clean fill with minimal splash.
- Silver Ion Antimicrobial protection on key plastic components to inhibit the growth of mold and mildew.
- Real Drain System eliminates standing water.

AMERICAN PRIDE. A LIFETIME TRADITION.

Like your family, the Elkay family has values and traditions that endure. For almost a century, Elkay has been a family-owned and operated company, providing thousands of jobs that support our families and communities.



Included with Product: Water Cooler(LMABFTL8WSLC), Bottle Filler (LZWSR), Filter

T Ships in multiple boxes.

PRODUCT COMPLIANCE

- ADA & ICC A117.1
- ASME A112.19.3/CSA 845.4
- Buy American Act
- CAN/CSA C22.2 No. 120
- GreenSpec®
- NSF/ANSI 42, 53, 61, & 372 (lead free)
- UL 399



Complies with ADA & ICC A117.1 accessibility requirements when installed according to the requirements outlined in these standards. Installation may require additional components and/or construction features to be fully compliant. Consult the local Authority Having Jurisdiction if necessary.

Installation Instructions (PDF)

5 Year Limited Warranty on the refrigeration system of the unit. Electrical components and water system are warranted for 12 months from date of installation. **Warranty pertains to drinking water applications only. Non-drinking water applications are not covered under warranty.**

Warranty (PDF)

PART: _____ QTY: _____
 PROJECT: _____
 CONTACT: _____
 DATE: _____
 NOTES: _____
 APPROVAL: _____

In keeping with our policy of continuing product improvement, Elkay reserves the right to change product specifications without notice. Please visit elkay.com for the most current version of Elkay product specification sheets. This specification describes an Elkay product with design, quality, and functional benefits to the user. When making a comparison of other producers' offerings, be certain these features are not overlooked.

COOLING SYSTEM

- Compressor: Hermetically-sealed, reciprocating type, single phase. Sealed-in lifetime lubrication.
- Condenser: Fan cooled, copper tube with aluminum fins. Fan motor is permanently lubricated.
- Cooling Unit: Combination tube-tank type. Continuous copper tubing with is fully insulated with EPS foam that meets UL requirements for self-extinguishing material.
- Refrigerant Control: Refrigerant R-134a is controlled by accurately calibrated capillary tube.
- Temperature Control: Easily accessible enclosed adjustable thermostat is factory preset. Requires no adjustment other than for altitude requirements.

OPTIONAL ACCESSORIES

51300C - Elkay WaterSentry Plus Replacement Filter (Bottle Fillers)
MLP200 - Accessory - In Wall Carrier (Bi-Level) for bi-level EZ, LZ, EMABF, LMABF, VRC, LVRC models
98313C - Elkay Cane Apron for EMABF (Gray Granite)
36292C - Accessory - Power Block for Multistation Bottle Filling Stations

In keeping with our policy of continuing product improvement, Elkay reserves the right to change product specifications without notice. Please visit elkay.com for the most current version of Elkay product specification sheets. This specification describes an Elkay product with design, quality, and functional benefits to the user. When making a comparison of other producers' offerings, be certain these features are not overlooked.

Elkay ezH2O Bottle Filling Station with Mechanically Activated
Bi-Level ADA Cooler Filtered Refrigerated Light Gray
Model LMABFTL8WSLK

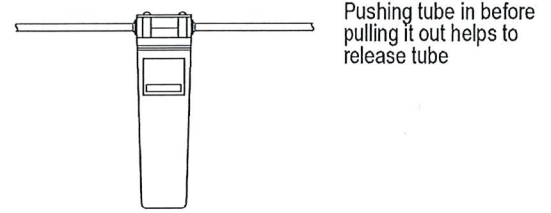
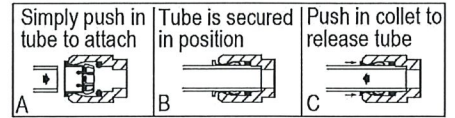
**IMPORTANT!
INSTALLER PLEASE NOTE :**

This water cooler has been designed and built to provide water to the user which has not been altered by materials in the cooler waterways. The grounding of electrical equipment such as telephone, computer, etc. to water lines is a common procedure. The grounding may be in the building but may also occur away from the building. This grounding can cause electrical feedback into a water cooler creating an electrolysis which creates a metallic taste or causes an increase in the metal content of the water. This condition is avoidable by installing the cooler using the proper materials as shown below.

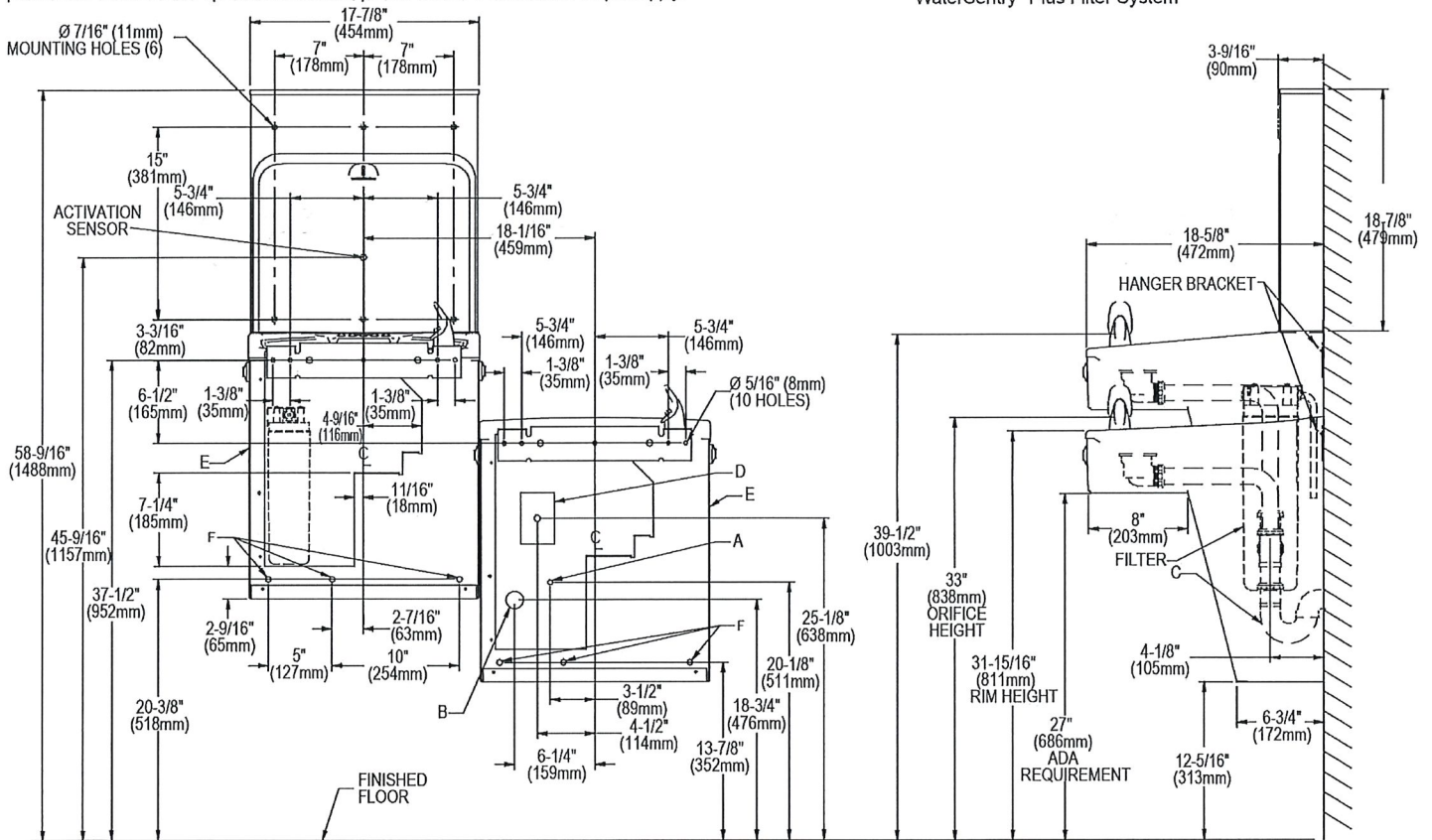
NOTICE

This water cooler must be connected to the water supply using a dielectric coupling. The cooler is furnished with a non-metallic strainer which meets this requirement. The drain trap which is provided by the installer should also be plastic to completely isolate the cooler from the building plumbing system. Bottle filler unit on bracket attached to wall by 6 holes (as shown). Water and electrical will connect through pre-punched hole in basin. These products are designed to operate on 20 psi to 105 psi supply line pressure. Simultaneous operation of both bubblers on a bi-level unit may not be possible depending on water supply pressure. If simultaneous operation is desired, please ensure a minimum of 65 psi supply.

OPERATION OF QUICK CONNECT FITTINGS



WaterSentry® Plus Filter System



LEGEND: REDUCE HEIGHT BY 3 INCHES FOR INSTALLATION OF CHILDRENS ADA COOLER
 A = Recommended Water Supply location. Shut-off Valve (not furnished) to accept 3/8" O.D. unplated copper tube. Up to 3" (76mm) maximum out from wall.
 B = Recommended Waste Outlet location. To accommodate 1-1/2" nominal drain. Drain stub 2" (51mm) out from wall.
 C = 1-1/2" Trap (not furnished).
 D = Electrical Supply (3) Wire Recessed Box Duplex Outlet.
 E = Insure proper ventilation by maintaining 6" (152mm) minimum clearance from cabinet louvers to wall.
 F = 7/16" (11mm) Bolt Holes for fastening to wall.
 Note : New Installations Must Use Ground Fault Circuit Interrupter (GFCI). It is highly recommended that the circuit be dedicated and the load protection be sized for 20 amps.

In keeping with our policy of continuing product improvement, Elkay reserves the right to change product specifications without notice. Please visit elkay.com for the most current version of Elkay product specification sheets. This specification describes an Elkay product with design, quality, and functional benefits to the user. When making a comparison of other producers' offerings, be certain these features are not overlooked.