

PROJECT DESCRIPTION AND SCOPE OF WORK (SOW) SUMMARY

THE FOLLOWING IS A SUMMARY OF THE NATURE AND INTENT OF THE WORK, IT INCLUDES BUT IS NOT LIMITED TO THE FOLLOWING:

- 1) INSTALLATION OF NEW 120/208V 1600A ELECTRICAL SERVICE.
- 2) INSTALLATION OF NEW 1600A MAIN DISTRIBUTION PANEL (MDP)
- 3) SELECTIVE DEMOLITION OF EXISTING 240V SINGLE PHASE SERVICE AND BACK FEED EXISTING LOADS FROM NEW MDP.
- 4) CONTRACTORS SHALL MAINTAIN EXISTING SERVICE AND SHALL INSTALL AND ENERGIZE NEW SERVICE.
- 5) CONTRACTOR SHALL MOVE LOADS FROM EXISTING SERVICE TO NEW AND THEN DE-ENERGIZE AND DEMO EXISTING SERVICE.
- 6) THE OWNER WILL CONSTRUCT THE NEW ELECTRICAL CLOSET, CONTRACTOR SHALL COORDINATE WITH OWNER.
- 7) MISC. WORK AS INDICATED ON THE PLANS TO PROVIDE A COMPLETE INSTALLATION READY FOR CONTINUOUS USE.

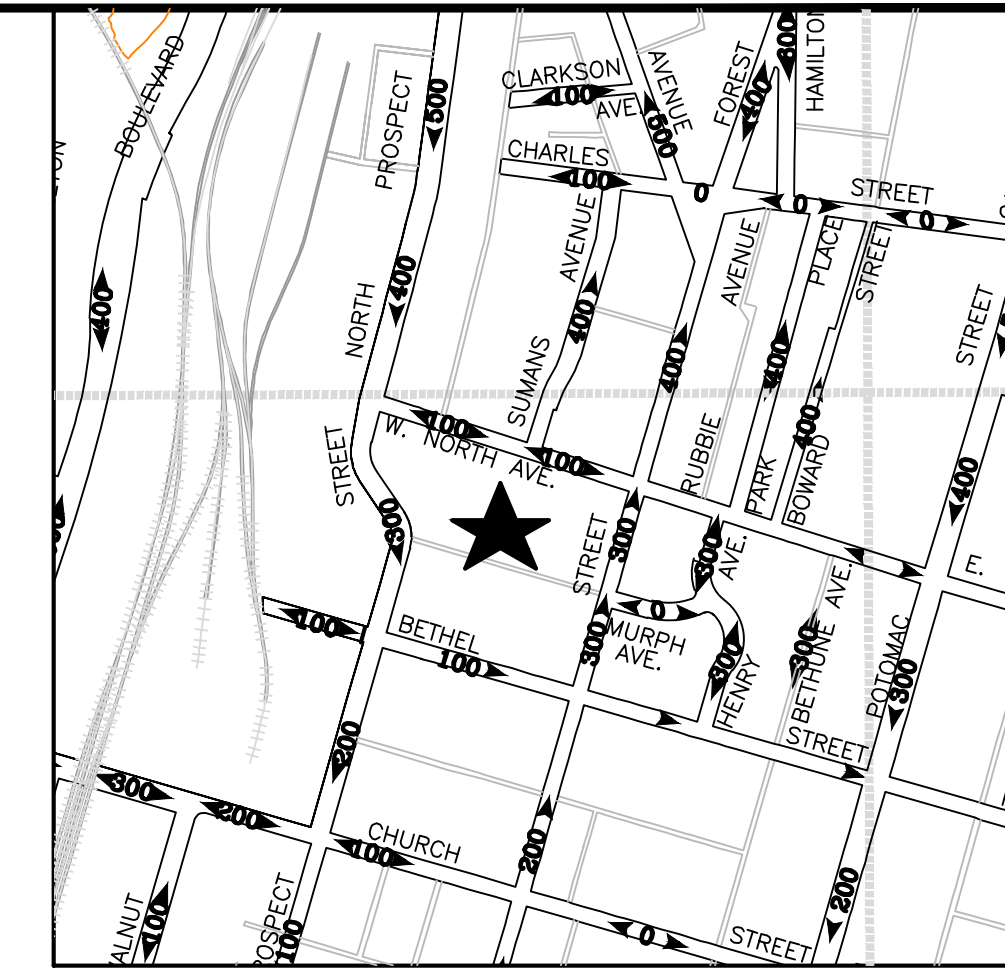
WASHINGTON COUNTY MARYLAND

BOARD OF COUNTY COMMISSIONERS

MARTIN LUTHER KING JR. COMMUNITY CENTER

ELECTRICAL SERVICE UPGRADE

PROJECT #28-293



VICINITY MAP
NOT TO SCALE

DRAWING LIST

- C-0.0 PROJECT COVER SHEET
- A-1.1 FLOOR PLAN, WALL SECTION AND DETAILS (SEE #6 ABOVE)
- E-0.0 ELECTRICAL COVER SHEET
- E-0.1 ELECTRICAL STANDARD DETAIL
- E-1.1 ELECTRICAL POWER PART PLAN
- E-1.2 ELECTRICAL LIGHTING PART PLAN
- E-1.3 ELECTRICAL SITE PLAN
- E-2.0 ELECTRICAL POWER RISER AND SCHEDULES
- E-3.0 SWITCHGEAR SPECIFICATIONS



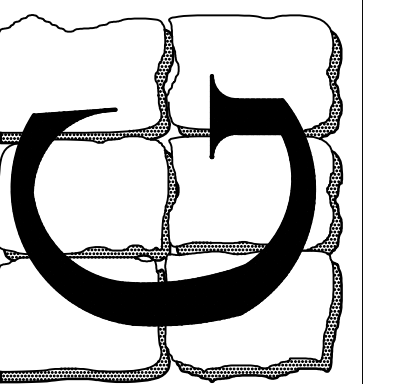
L.S. GRIM CONSULTING ENGINEERS
PRIME CONSULTANT AND DESIGNER OF RECORD

BFM ARCHITECTS
ARCHITECTURAL CONSULTANT

MATONAK AND ASSOCIATES
STRUCTURAL CONSULTANT

21-022

L.S. GRIM, INC.
Consulting Engineers
MAIN OFFICE: 2275 RESEARCH BLVD., SUITE 500, ROCKVILLE, MD 20850
PHONE: 301-583-7977
FAX: 301-583-7978
D.C. METRO OFFICE: 181 WEST NORTH AVENUE, HAGERSTOWN, MD 21740
PHONE: 410-326-4367
FAX: 410-326-4368
© 2021 L.S. GRIM, INC. & LESLIE S. GRIM, P.E.



MARTIN LUTHER KING JR.
COMMUNITY CENTER
181 WEST NORTH AVENUE
HAGERSTOWN, MD 21740

PROJECT COVER SHEET

Professional Certification
I certify that these documents were prepared or approved by me, and that I am a duly licensed engineer under the laws of the State of Maryland.
License Number: 14401
Expiration Date: 4/21/2023

LESLIE SCOTT GRIM, P.E.
CD PROF. ENG. NO. PE0050461
DC PROF. ENG. NO. PE90201
DE PROF. ENG. NO. 19513
GA PROF. ENG. NO. PE03262
HI PROF. ENG. NO. PE13043
MD PROF. ENG. NO. 14401
NJ PROF. ENG. NO. 033364
NY PROF. ENG. NO. 39497
PA PROF. ENG. NO. 075414
VA PROF. ENG. NO. PE032636E
WV PROF. ENG. NO. 10764

BOARD OF COUNTY COMMISSIONERS:

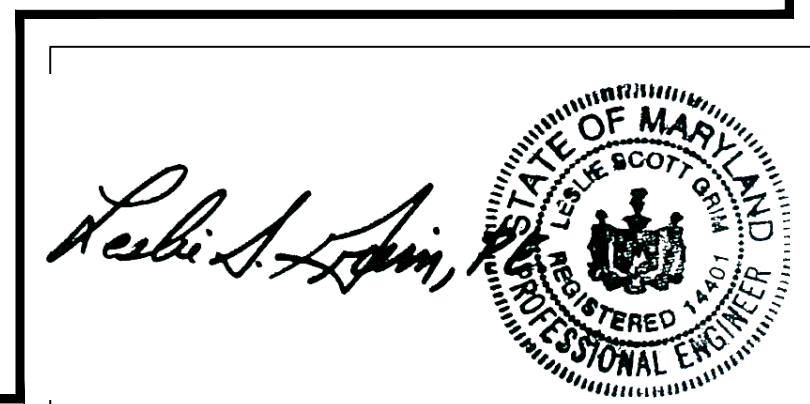
JEFFREY A. CLINE, PRESIDENT
TERRY L. BAKER, VICE PRESIDENT
WAYNE K. KEEFER
RANDALL E. WAGNER
CHARLES A. BURKETT JR.

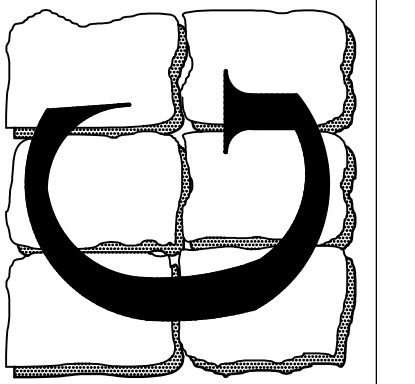
JOHN M. MARTIRANO, COUNTY ADMINISTRATOR
ANDREW ESHLEMAN, DIRECTOR OF PUBLIC WORKS
DANIEL HIXON, ASSISTANT DIRECTOR OF PUBLIC WORKS BG+FF

REV.	DATE	COMMENT
	6-23-2021	OWNER REVIEW SET
	7-6-2021	BID/ PERMIT SET

DRAWN BY: LBG

C-0.0
OF 9 SHEETS
DATE: JULY 6, 2021





Professional Certification
I certify that these documents were prepared or approved by me, and that I am a duly licensed engineer under the laws of the State of Maryland.
License Number: 14401
Expiration Date: 4/21/2023

LESLIE SCOTT GRIM, P.E.
CO. PROF. ENG. NO. PE0050461
DC. PROF. ENG. NO. PE90201
DE. PROF. ENG. NO. 19513
GA. PROF. ENG. NO. PE032682
HI. PROF. ENG. NO. PE13043
MD. PROF. ENG. NO. 14401
NE. PROF. ENG. NO. 033364
NJ. PROF. ENG. NO. 38497
NY. PROF. ENG. NO. 075414
PA. PROF. ENG. NO. PE032836E
VA. PROF. ENG. NO. 022240
WV. PROF. ENG. NO. 10764

REV.	DATE	COMMENT
	06.25.2021	OWNER REVIEW SET

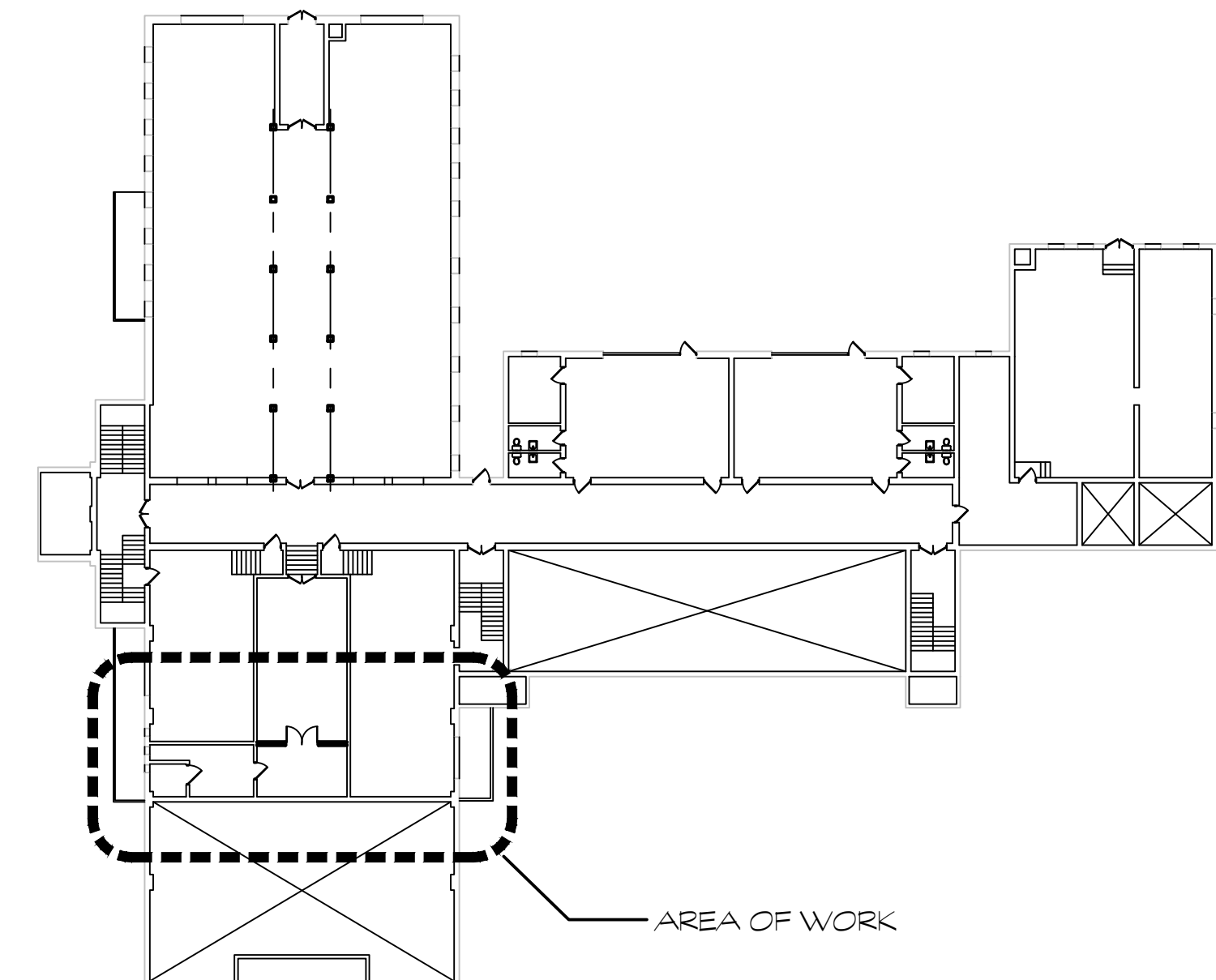
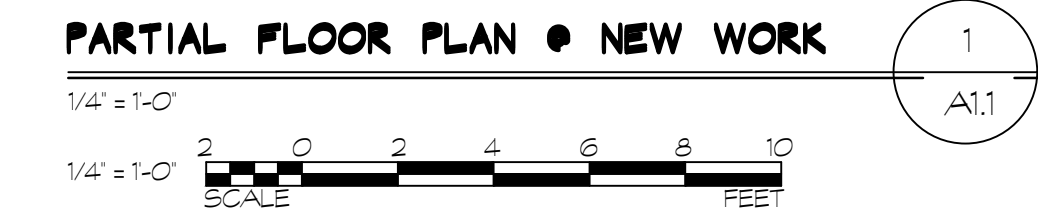
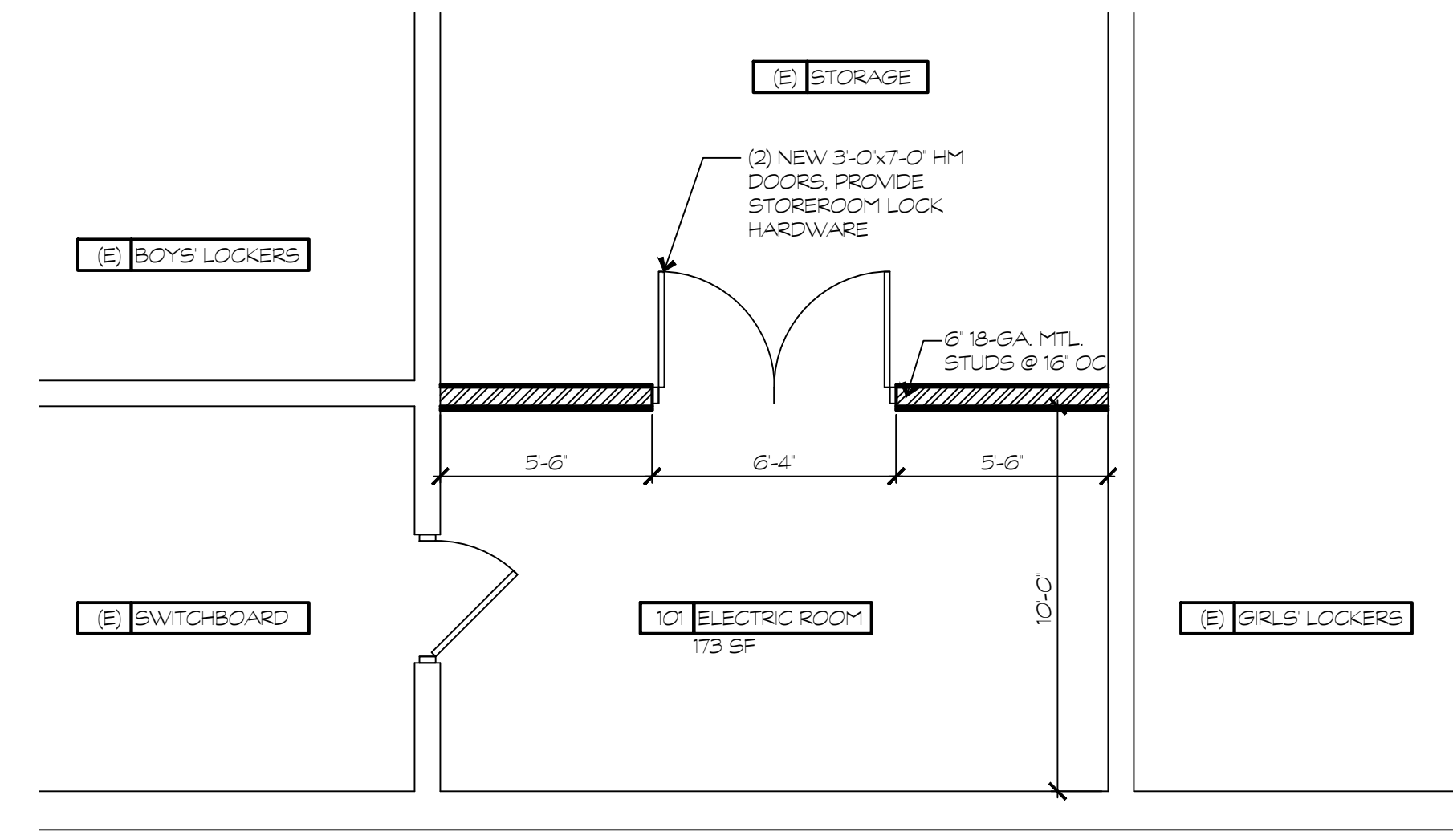
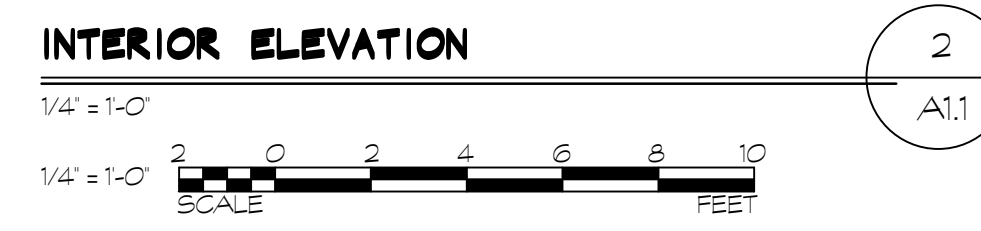
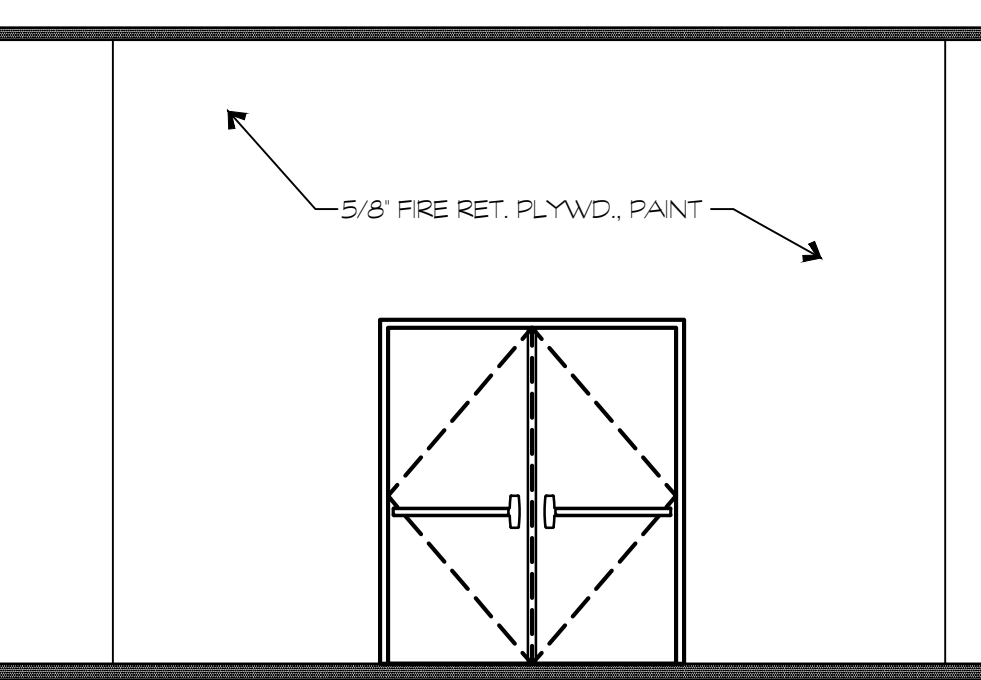
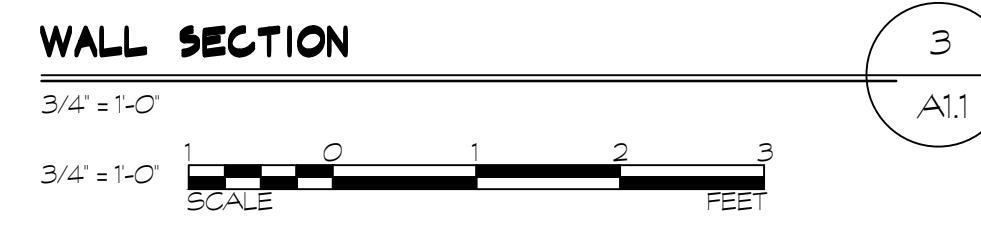
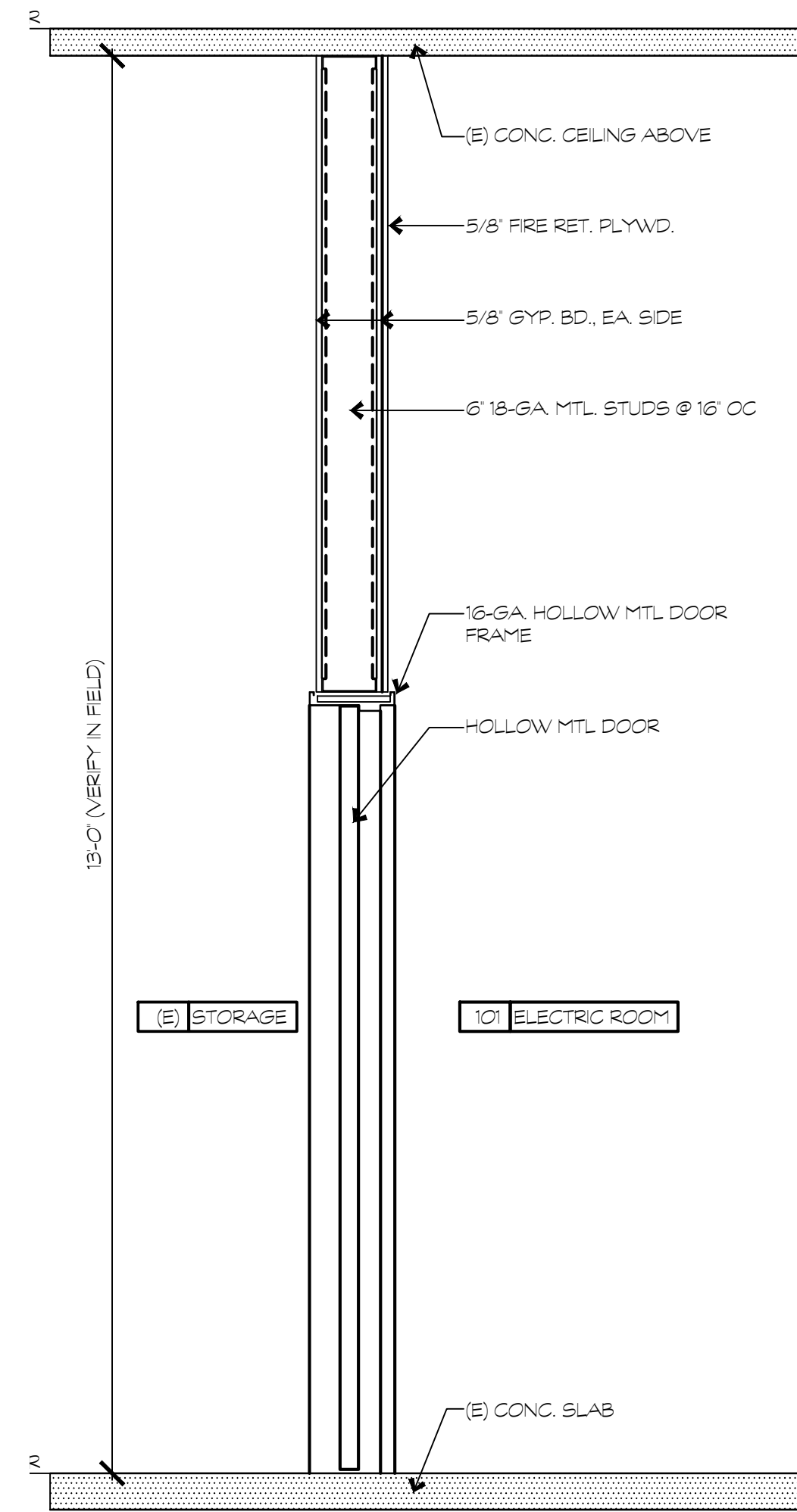
DRAWN BY: RAK

A1.1
OF SHEETS
DATE: JUNE 23, 2021

DOOR HARDWARE

6 HINGES	FBB 199 4.5x4.5"	STANLEY 630
2 PANIC RM DEVICE	33/37CL	VON DUPRIN 626
2 CLOSER	1461	LCN POWDER COAT
2 KICKPLATE	8400 B3E 8x34"	NES 630
2 DOOR SHOE	35 VDKB	NSP DARK BRONZE
2 THRESHOLD	896 ADA PANIC	NSP ALUM
1 WEATHERSTRIPPING	5050G	NSP CHARCOAL
1 REMOVABLE MULLION	DOUBLE STRIKE PLATES 1409	VON DUPRIN

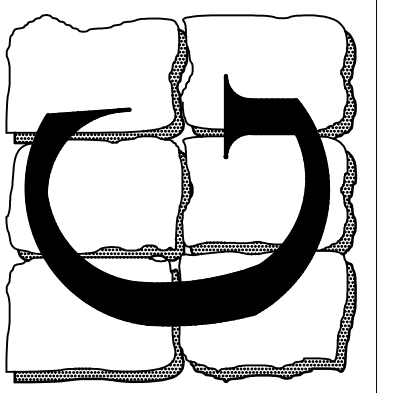
- DOOR SPEC**
- PART 2 PRODUCTS**
- 2.01 DOOR MANUFACTURERS
- A. STEELCRAFT.
B. CECO.
C. REPUBLIC.
D. CURRES
- 2.02 DOORS AND PANELS
- A. INTERIOR DOORS (NON-RATED): 1 3/4 INCHES THICK SD100 GRADE II MODEL 3. (HEAVY DUTY - SEAMLESS - HOLLOW STEEL CONSTRUCTION)
- 2.03 DOOR CONSTRUCTION
- A. FACE: STEEL SHEET IN ACCORDANCE WITH ANSI/SD100.
1. EXTERIOR: 16 GAUGE FACE, GALVANIZED.
2. INTERIOR: 18 GAUGE FACE, PRINTED.
- B. CORE
1. EXTERIOR POLYSTYRENE FOAM
2. INTERIOR STEEL CHANNEL GRD.
- 2.05 FABRICATION
- A. FABRICATE DOORS WITH HARDWARE REINFORCEMENT WELDED IN PLACE.
- 2.06 FINISH
- A. STEEL SHEET: GALVANIZED TO ASTM A525 G60.
B. PRIMER: RUST INHIBITIVE PRIMER, BAKED ON IN ACCORDANCE WITH ANSI A2241. TEST PROCEDURE AND ACCEPTANCE CRITERIA FOR PRIME PAINTED STEEL SURFACES. COLOR: GRAY.
- 2.01 FRAME MANUFACTURERS
- A. STEELCRAFT.
B. CECO.
C. REPUBLIC.
D. CURRES
E. FRP, INC. LLC - CORROSION RESISTANT FRAMES
- 2.02 FRAMES
- A. INTERIOR FRAMES: 16 GAUGE THICK MATERIAL, BASE METAL THICKNESS.
- 2.03 ACCESSORIES
- A. SILENCERS: RESILIENT RUBBER, FITTED INTO DRILLED HOLE.
- 2.04 FABRICATION
- A. FABRICATE FRAMES AS WELDED UNIT.
B. MULLIONS FOR DOUBLE DOORS: REMOVABLE TYPE, OF SAME PROFILES AS JAMBS.
C. FABRICATE FRAMES WITH HARDWARE REINFORCEMENT PLATES WELDED IN PLACE. PROVIDE MORTAR GUARD BOXES.
D. REINFORCE FRAMES WIDER THAN 48 INCHES WITH ROLL FORMED STEEL CHANNELS FITTED TIGHTLY INTO FRAME HEAD, FLUSH WITH TOP.
E. PREPARE FRAMES FOR SILENCERS. PROVIDE THREE SINGLE SILENCERS FOR SINGLE DOORS AND MULLIONS OF DOUBLE DOORS ON STRIKE SIDE. PROVIDE TWO SINGLE SILENCERS ON FRAME HEAD AT DOUBLE DOORS WITHOUT MULLIONS.



KEYPLAN



BUSHEY FEIGHT MORIN ARCHITECTS
BFMARCHITECTS.COM | 301.733.5600



Professional Certification
 I certify that these documents were prepared or approved by me, and that I am a duly licensed engineer under the laws of the State of Maryland.
 License Number: **14401**
 Expiration Date: **4/21/2023**

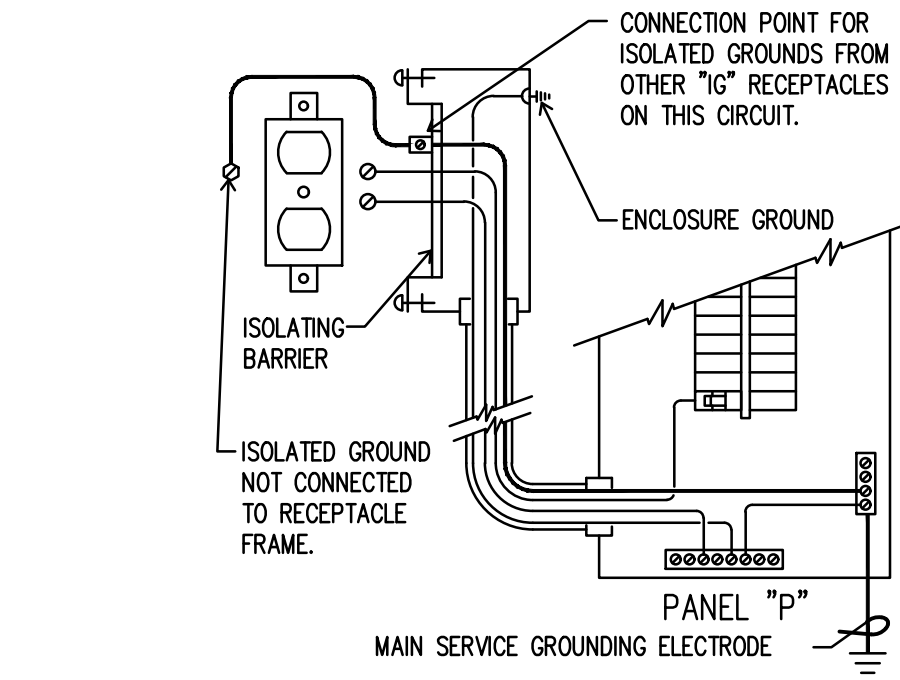
LESLIE SCOTT GRIM, P.E.
 CD PROF. ENG. NO. PE0050461
 DC PROF. ENG. NO. PE90201
 DE PROF. ENG. NO. 19513
 GA PROF. ENG. NO. PE032682
 HI PROF. ENG. NO. PE13943
 MD PROF. ENG. NO. 14401
 NJ PROF. ENG. NO. 033564
 NY PROF. ENG. NO. 39497
 PA PROF. ENG. NO. 035414
 VA PROF. ENG. NO. PE032636E
 WV PROF. ENG. NO. 022340
 WY PROF. ENG. NO. 10764

REV.	DATE	COMMENT
6-25-2021	OWNER REVIEW SET	
7-6-2021	BID / PERMIT SET	

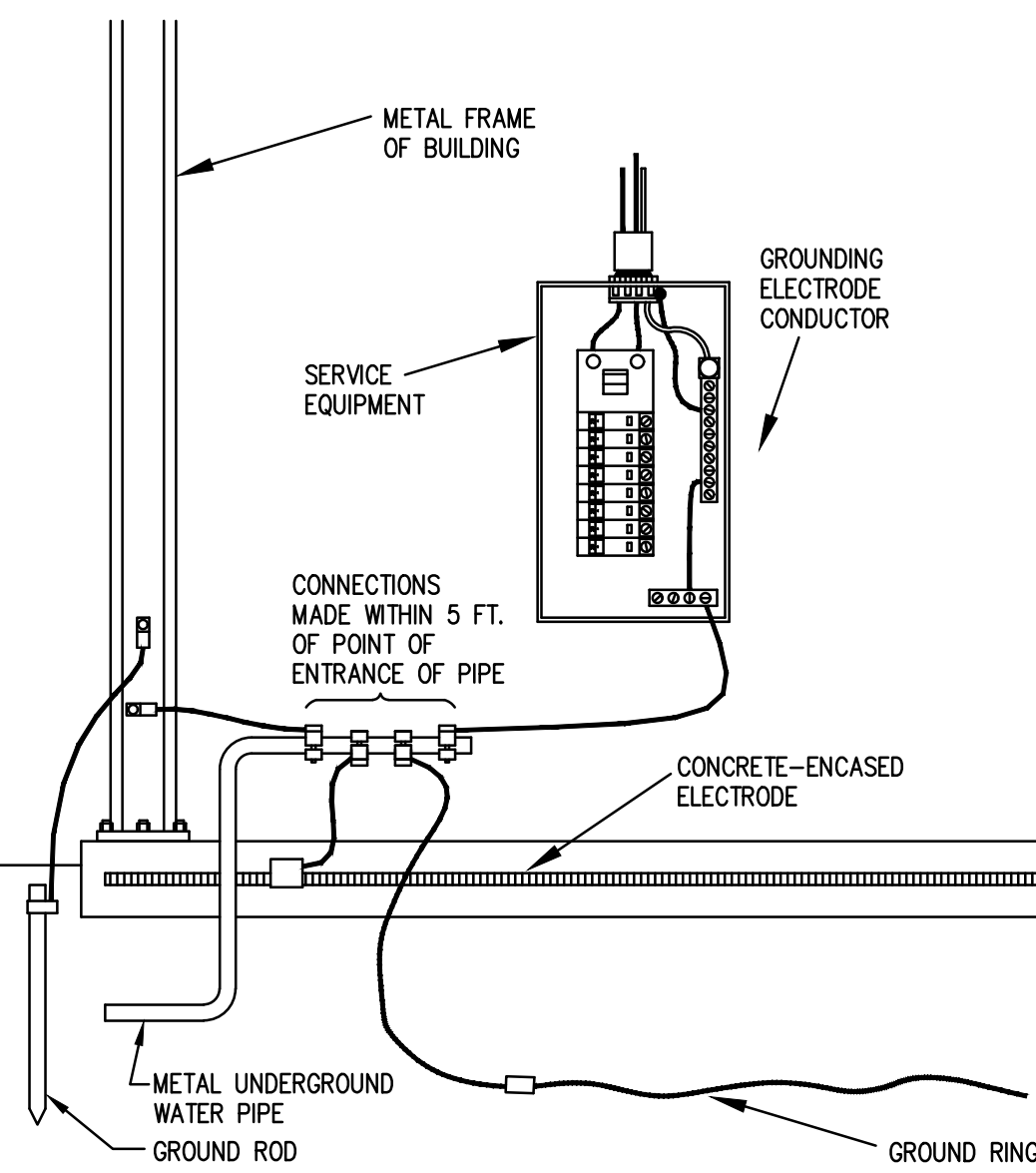
DRAWN BY: **TMM**
E-01
 OF 9 SHEETS
 DATE: **JULY 6, 2021**

ELECTRICAL POWER SYMBOLS

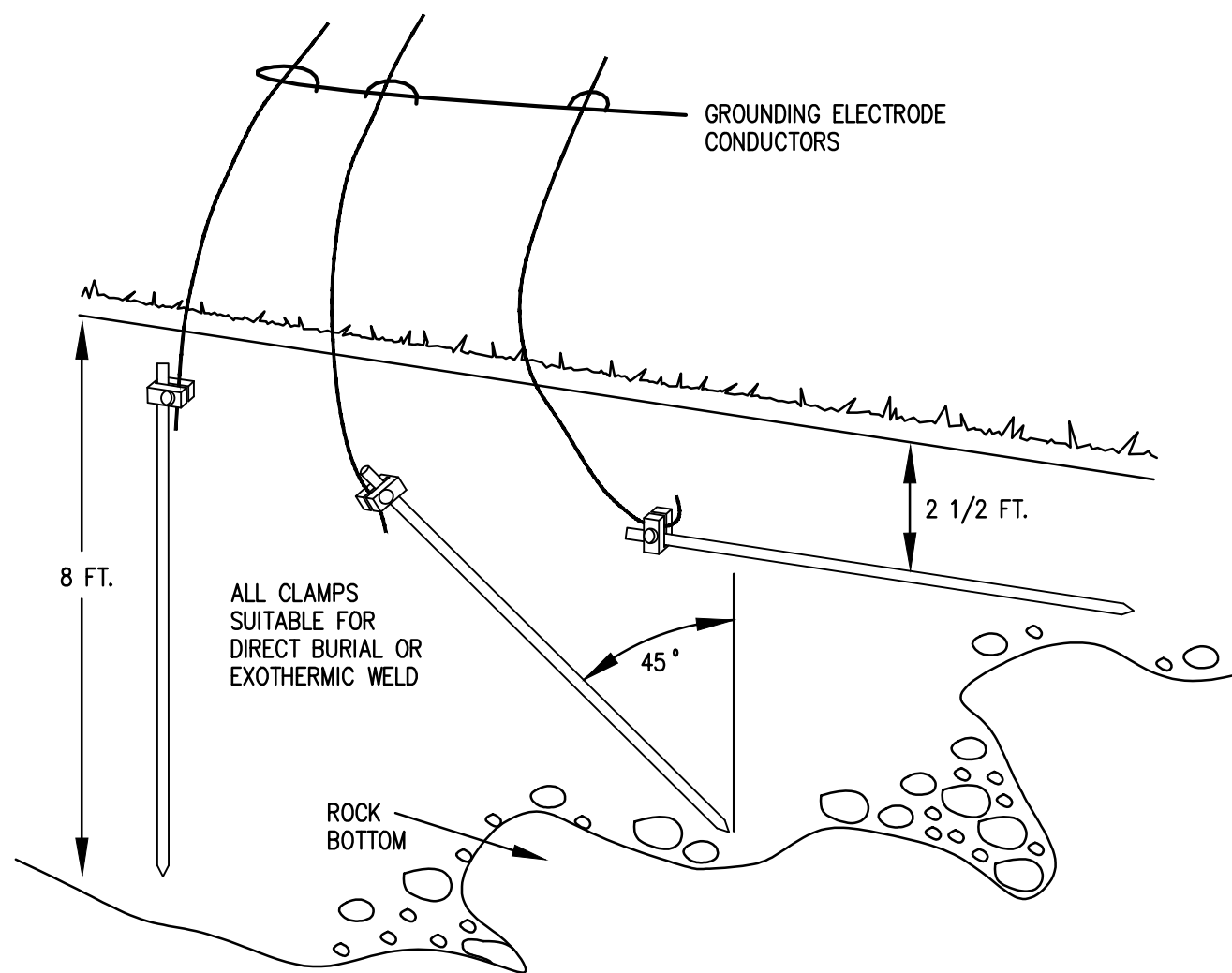
	POWER WIRING LEG
	HOME RUN TO PANEL/CKT, NUMBER OF TICK MARKS = NUMBER OF CONDUCTORS EXCLUDING GROUND, PROVIDE 'GREEN' GROUND WIRE FOR ALL CIRCUITS, NUMBER OF ARROW HEADS = NUMBER OF HOME RUNS
	DUPLEX GROUNDED RECEPTACLE
	DUPLEX RECEPTACLE WITH GROUND FAULT INTERRUPTER
	QUAD DUPLEX GROUNDED RECEPTACLE
	SPECIAL PURPOSE OUTLET, CONFIRM OUTLET CONFIGURATION (TYPE) WITH EQUIPMENT TO BE SERVED PRIOR TO INSTALLATION
	DISCONNECT SWITCH
	JUNCTION BOX
	EXHAUST FAN
	MOTOR OR MISCELLANEOUS LOAD
	TELEPHONE/DATA/TV BOX
	CEILING MOUNTED MOTION SENSOR
	WALL MOUNTED MOTING SENSOR
	RADIO POWER SAVER WIRELESS DAYLIGHT SENSOR
	LUTRON POWPAK DIMMING MODULE WITH 0-10V DIMMING
	SINGLE POLE SWITCH
	DOUBLE SWITCH
	THREE WAY SWITCH
	FOUR WAY SWITCH
	DIMMER SWITCH
	KEYED SWITCH
	JAMB SWITCH
	TIMER SWITCH
	MOTION SWITCH
	DIMMING MOTION SWITCH
	LED EMERGENCY EXIT LIGHT
	LED COMBINATION EXIT/EMERGENCY LIGHT
	LED EMERGENCY LIGHT
	OUTDOOR LED REMOTE DOUBLE-HEAD



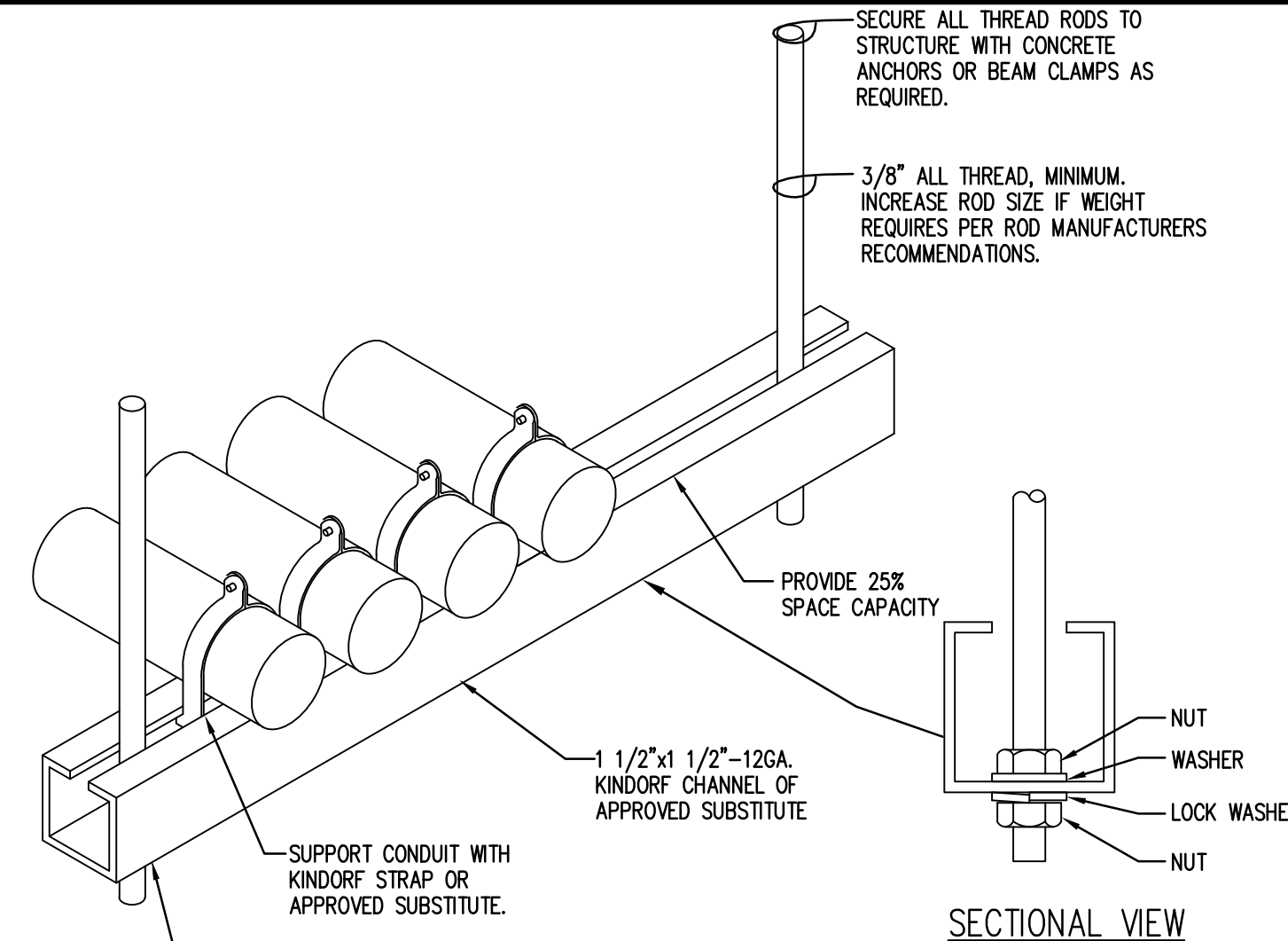
#1 ISOLATED GROUND RECEPTACLE PANEL
 NOT TO SCALE



#4 GROUNDING ELECTRODE SYSTEM DETAIL
 NOT TO SCALE



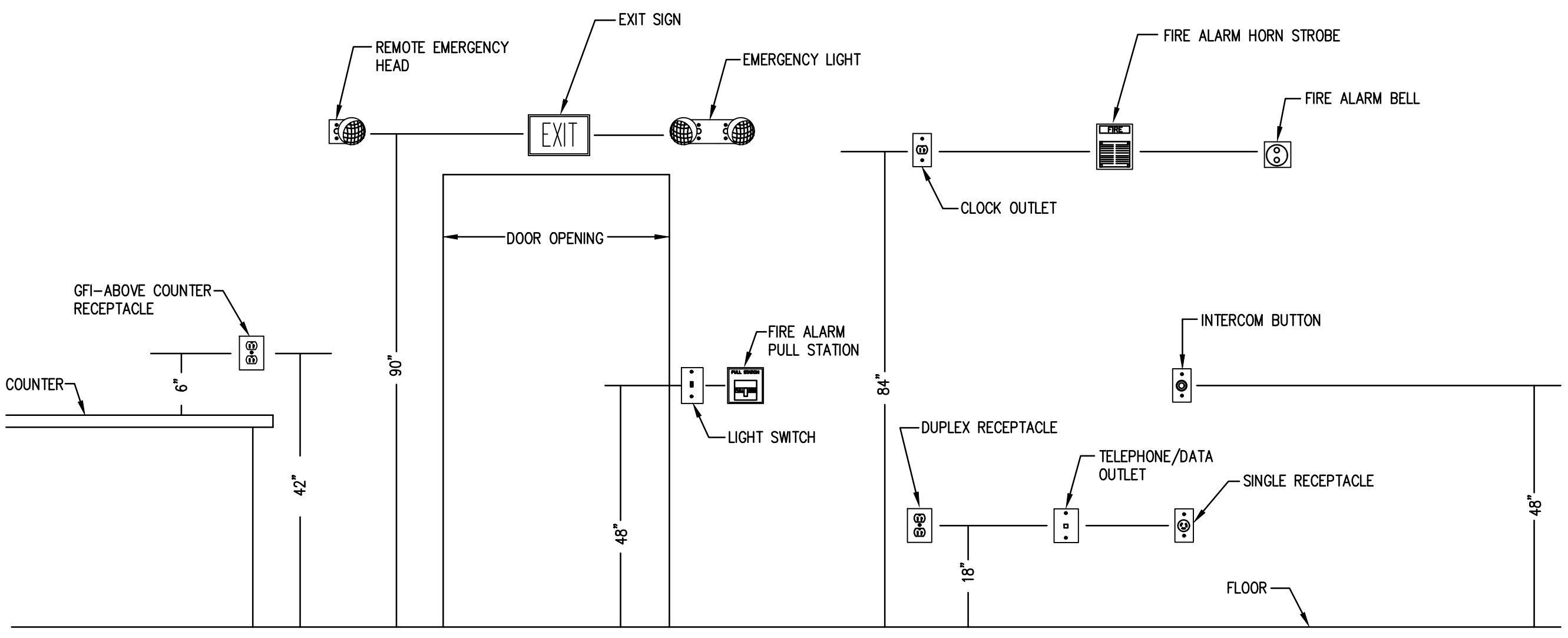
#5 INSTALLATION DETAIL FOR ROD + PIPE ELECTRODES
 NOT TO SCALE



#6 TRAPEZE SUPPORT DETAIL
 NOT TO SCALE

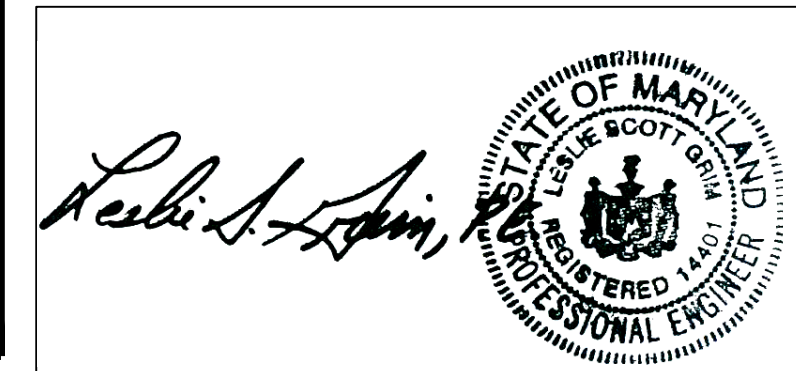
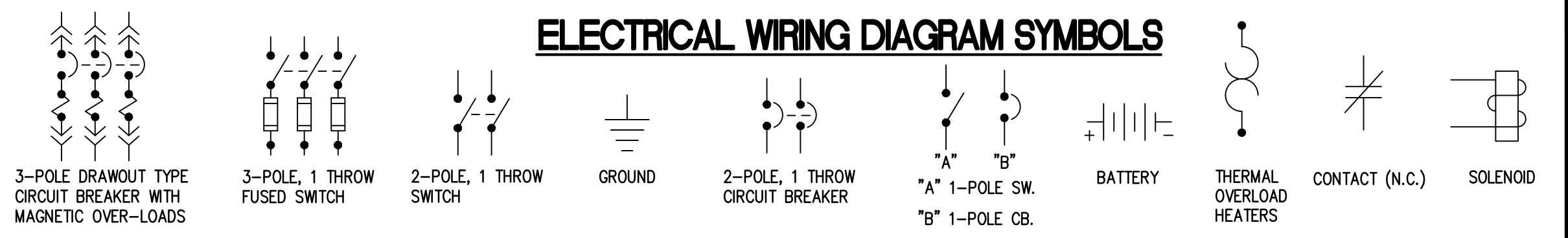
ELECTRICAL ABBREVIATIONS

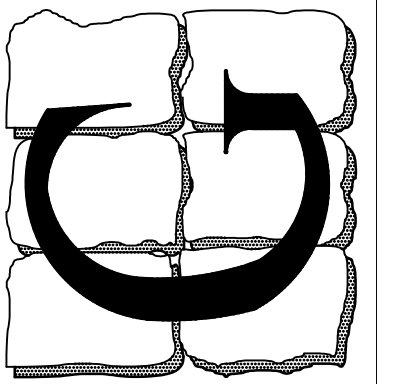
A	AMPERES	ESB	ENERGY SAVING BALLAST	MCA	MINIMUM CIRCUIT AMPACITY	SWBD	SWITCHBOARD
AC	ABOVE COUNTER OR ALTERNATING CURRENT	EF	EXHAUST FAN	MCC	MOTOR CONTROL CENTER	SWGR	SWITCHGEAR
AFF	ABOVE FINISHED FLOOR	EX	EXISTING	MH	METAL HALIDE	2S2W	TWO SPEED, TWO WINDINGS
AFG	ABOVE FINISHED GRADE	FAAR	FIRE ALARM ANNUNCIATOR PANEL	MIN	MINIMUM	TC	TIME CLOCK
AHU	AIR HANDLING UNIT	FACP	FIRE ALARM CONTROL PANEL	MLO	MAIN LUGS ONLY	TBD	TO BE DETERMINED
AL	ALUMINIUM	FP	FIRE PUMP	MOV	MOTORIZED VALVE	TBI	TO BE INSTALLED
AIC	AMPERES INTERRUPTING CAPACITY	FL	FLOOR	MTD	MOUNTED	TBR	TO BE REMOVED
ATS	AUTOMATIC TRANSFER SWITCH	FLUOR	FLUORESCENT	NEC	NATIONAL ELECTRICAL CODE	TVSS	TRANSIENT VOLTAGE SURGE SUPPRESSOR
BKR	BREAKER	FVNR	FULL VOLTAGE NON-REVERSING	NIC	NOT IN CONTRACT	TYP	TYPICAL
BLDG	BUILDING	FVR	FULL VOLTAGE REVERSING	NL	NIGHT LIGHT	UNO	UNLESS NOTED OTHERWISE
BAS	BUILDING AUTOMATION SYSTEM	FEW	FURNISHED WITH EQUIPMENT	NEUT	NEUTRAL	UPS	UNINTERRUPTABLE POWER SUPPLY
BMS	BUILDING MANAGEMENT SYSTEM	GFI	GROUND FAULT CIRCUIT INTERRUPTER	NTS	NOT TO SCALE	UH	UTILITY HEATER
CLG	CEILING	GRND	GROUND	PVC	POLYVINYL CHLORIDE CONDUIT	VAV	VARIABLE AIR VOLUME
CK	CIRCUIT	HOA	HAND-OFF-AUOTMATIC	PB	PULL BOX	V	VOLTS
CB	CIRCUIT BREAKER	HOR	HAND-OFF-REMOTE	PC	PHOTOELECTRICAL CONTROL	VFD	VARIABLE FREQUENCY DRIVE
CP	CIRCULATOR PUMP	HP	HORSEPOWER	P	POLE	VF	VENTILATION FAN
CCTV	CLOSED CIRCUIT TELEVISION	HPF	HIGH POWER FACTOR	PLC	PROGRAMMABLE LOGIC CONTROLLER	WH	WATER HEATER
C	CONDUIT	HPS	HIGH PRESSURE SODIUM	PNL	PANEL	W	WIRE OR WATTS
CU	COPPER OR CONDENSING UNIT	IG	ISOLATED GROUND	PH	PHASE	WP	WEATHERPROOF
DIA	DIAMETER	INST	INSTRUMENTATION	QTY	QUANTITY		
DS	DISCONNECT SWITCH OR DUCTLESS SPLIT UNIT	KVA	KILO VOLT-AMPERES	REC	RECEPTACLES		
DPDT	DOUBLE POLE DOUBLE THROW	KW	KILOWATT	RGS	RIGID GALVANIZED CONDUIT		
ELEC	ELECTRICAL	LAN	LOCAL AREA NETOWRK	RTU	ROOF TOP UNIT		
EC	ELECTRICAL CONTRACTOR	LTG	LIGHTING	SH	SHIELDED		
EH	ELECTRIC HEATER	LTS	LIGHTS	ST	SHUNT TRIP		
EMT	ELECTRICAL METALLIC TUBING	MAX	MAXIMUM	SF	SQUARE FEET		
EP	EXPLOSION PROOF	MOP	MAXIMUM OVERCURRENT PROTECTION	SS	STAINLESS STEEL		
ES	EMERGENCY STOP	MCB	MAIN CIRCUIT BREAKER	SW	SWITCH		



#7 MOUNTING HEIGHT DETAIL
 NOT TO SCALE

ELECTRICAL WIRING DIAGRAM SYMBOLS





Professional Certification
 I certify that these documents were prepared or approved by me, and that I am a duly licensed engineer under the laws of the State of Maryland.
 License Number: 14401
 Expiration Date: 4/21/2023

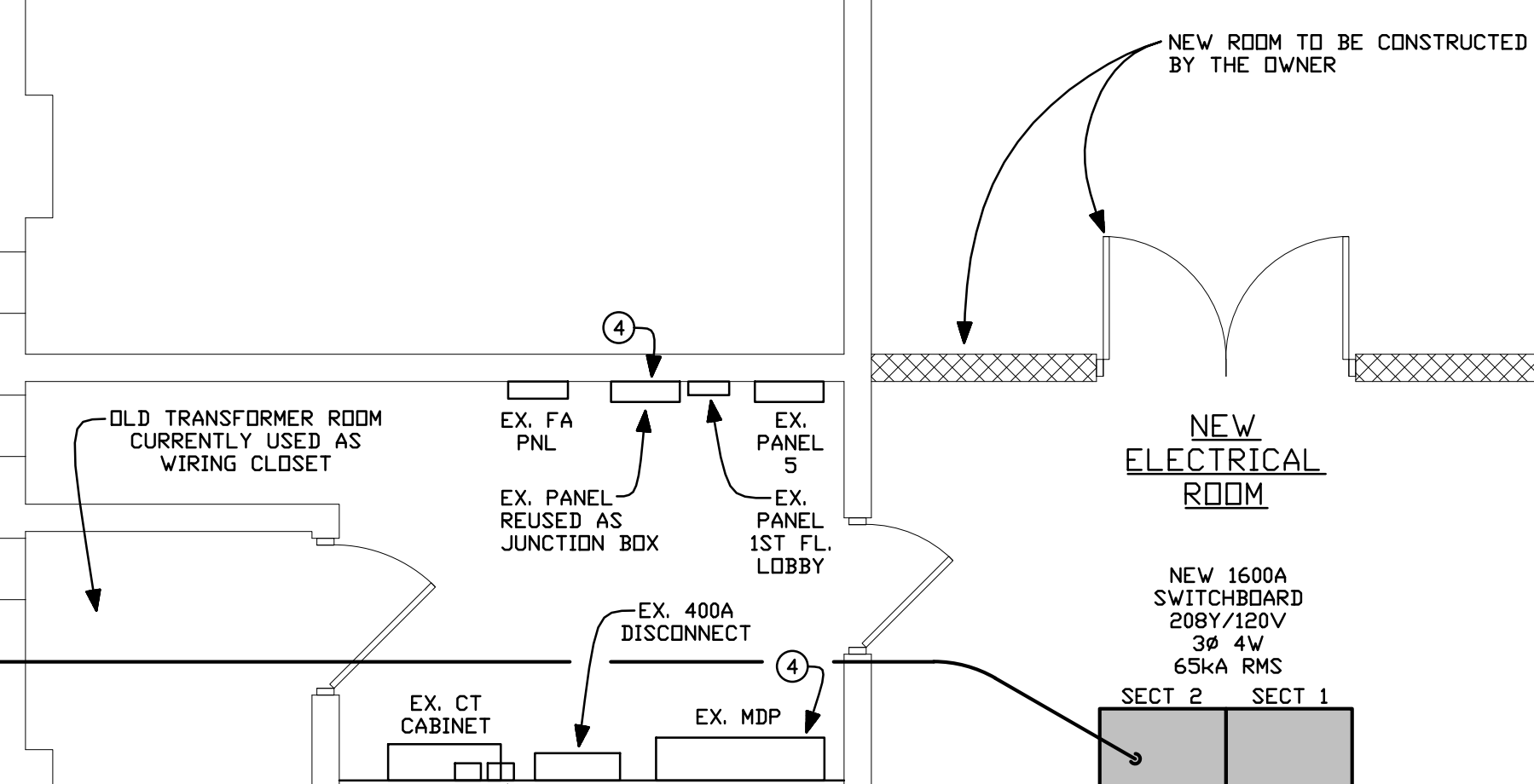
LESLIE SCOTT GRIM, P.E.
 CO. PROF. ENG. NO. PE0050461
 DC. PROF. ENG. NO. PE90201
 DE. PROF. ENG. NO. 19513
 GA. PROF. ENG. NO. PE032682
 HI. PROF. ENG. NO. PE13043
 MD. PROF. ENG. NO. 14401
 NC. PROF. ENG. NO. 033364
 NJ. PROF. ENG. NO. 38497
 NY. PROF. ENG. NO. 075414
 PA. PROF. ENG. NO. PE032636E
 VA. PROF. ENG. NO. 022240
 WV. PROF. ENG. NO. 10764

REV.	DATE	COMMENT
	6-25-2021	OWNER REVIEW SET
	7-6-2021	BID/ PERMIT SET

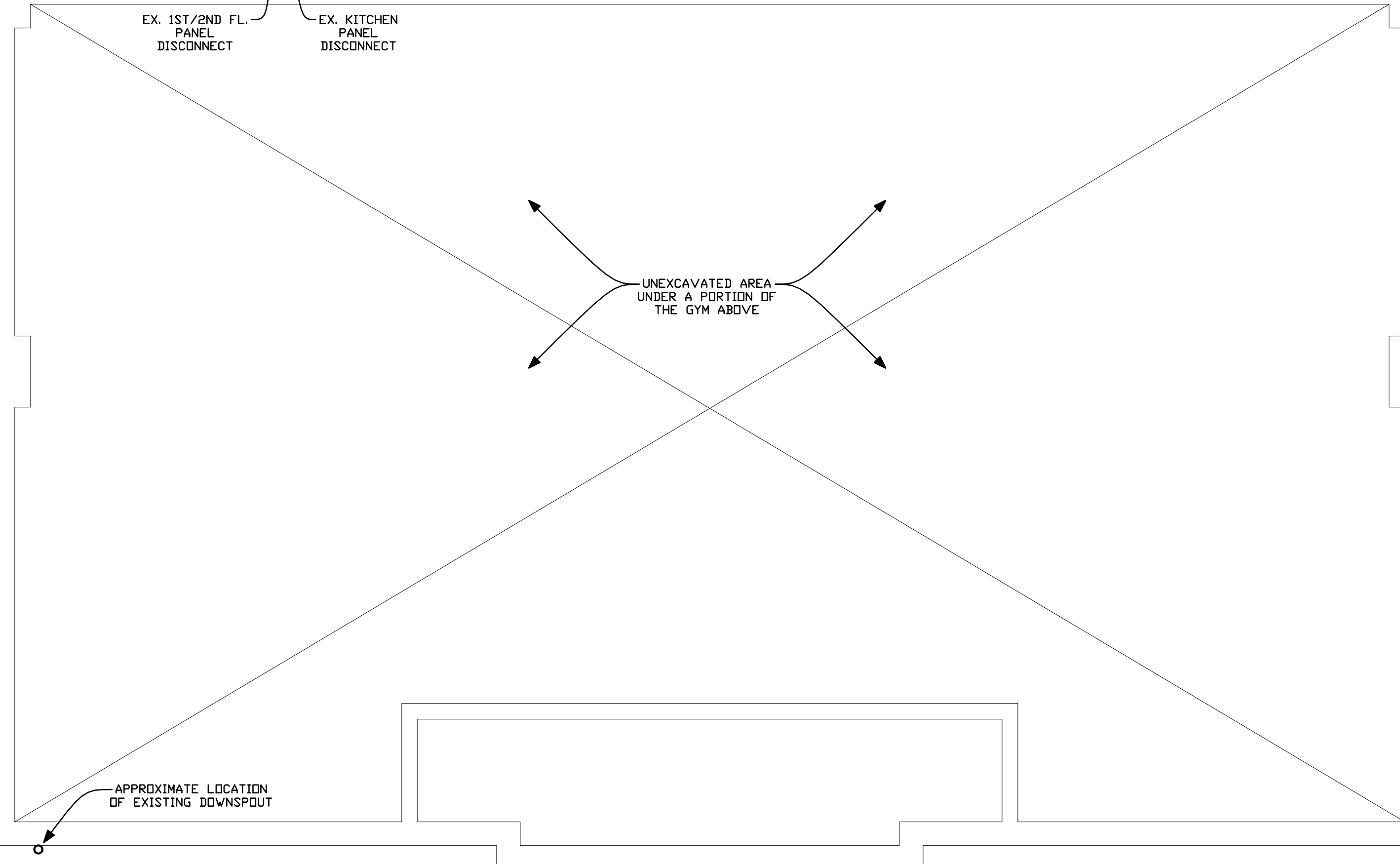
DRAWN BY: TMH

E-11
 OF 9 SHEETS
 DATE: JULY 6, 2021

EXISTING AREA WELL WITH HAND RAIL



EXACT ROUTING OF CONDUITS TO BE DETERMINED IN FIELD



OUT TO POWER COMPANY METERED TRANSFORMER

APPROXIMATE LOCATION OF EXISTING DOWNSPOUT

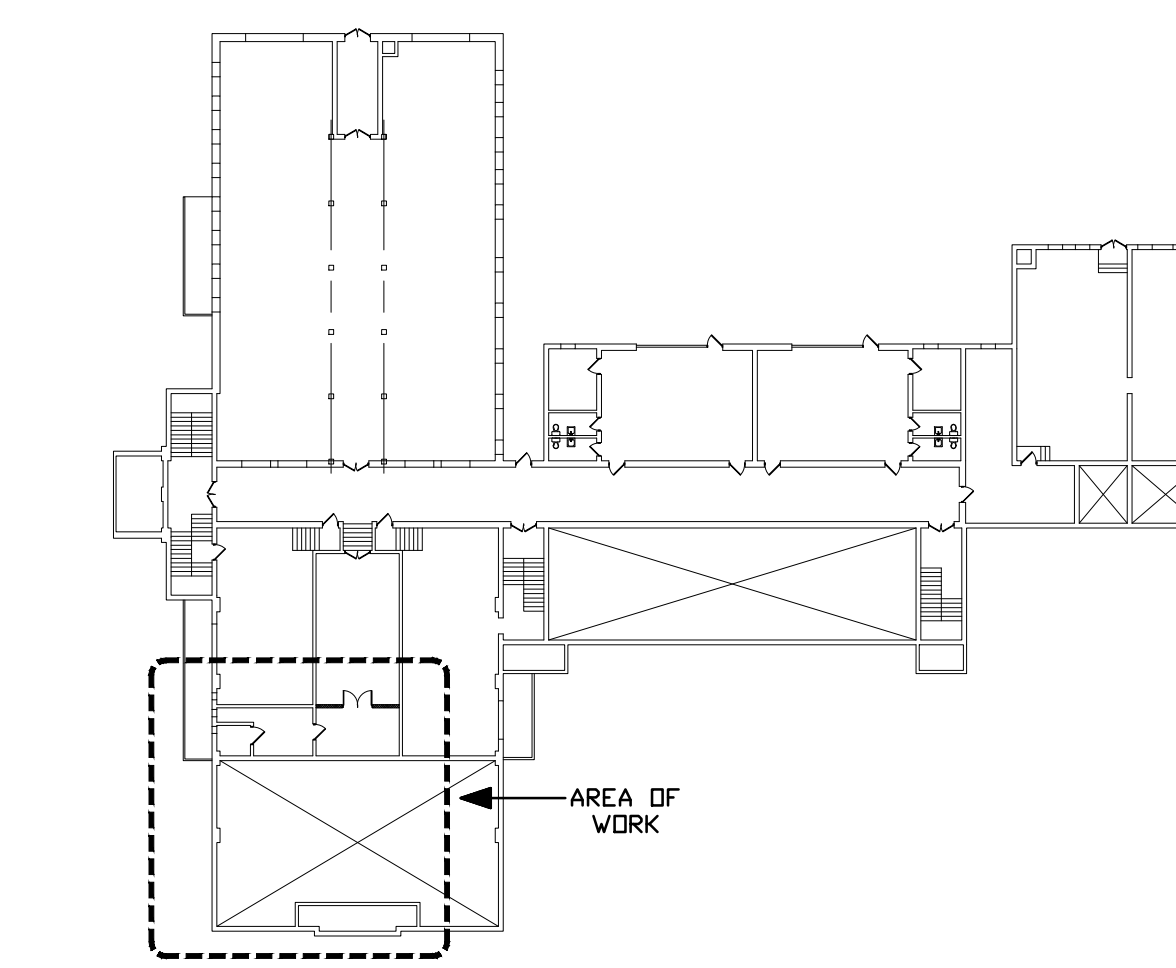
SEE SHEET E-13 SITE PLAN FOR ADDITIONAL INFORMATION ON SITE ELECTRICAL

DRAWING KEYED NOTES:

- ① EXPOSED CONDUIT IN AREA WELL AND INTO CONNECTION AT NEW MAIN DISTRIBUTION PANEL SHALL BE RIGID STEEL.
- ② CONTRACTOR SHALL PAINT EXPOSED CONDUIT.
- ③ OWNER WILL REMOVE EXISTING LOUVER FROM WALL AND INFILL OPENING WITH COMMON BRICK MASONRY WALL PATCH.
- ④ EXISTING PANEL TO BE USED AS JUNCTION BOX, FABRICATE AND INSTALL NEW BLANK COVER.

GENERAL DRAWING NOTES:

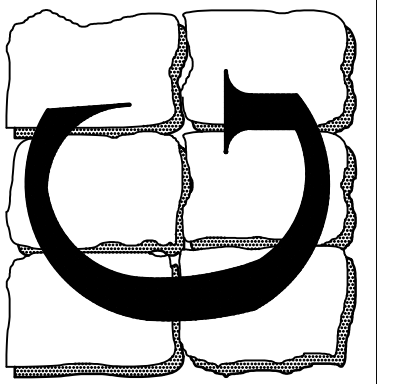
- 1) CONTRACTOR SHALL REWORK EXISTING ELECTRICAL FEEDERS TO BE FED FROM NEW MAIN DISTRIBUTION PANEL.



KEY PLAN
 SCALE: 1"=40'-0"

ELECTRICAL POWER PART PLAN
 SCALE: 1/4"=1'-0"

Leslie S. Grim, P.E.
 STATE OF MARYLAND
 LESLIE SCOTT GRIM
 REGISTERED PROFESSIONAL ENGINEER

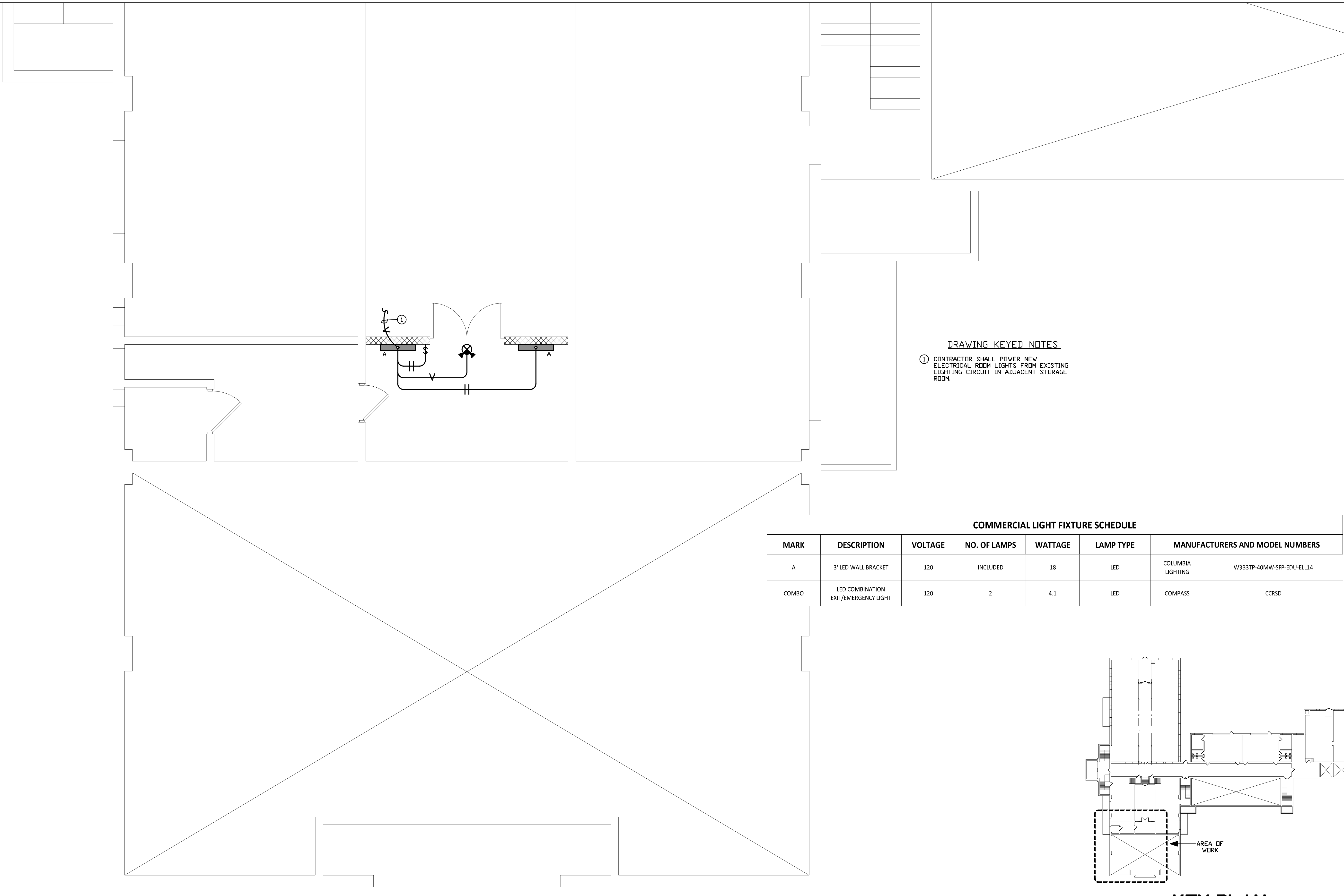


Professional Certification
 I certify that these documents were prepared or approved by me, and that I am a duly licensed engineer under the laws of the State of Maryland.
 License Number: 14401
 Expiration Date: 4/21/2023

LESLIE SCOTT GRIM, P.E.
 CO. PROF. ENG. NO. PE0050461
 DC. PROF. ENG. NO. PE901201
 DE. PROF. ENG. NO. 19513
 GA. PROF. ENG. NO. PE032682
 HI. PROF. ENG. NO. PE13043
 MD. PROF. ENG. NO. 14401
 NJ. PROF. ENG. NO. 033364
 NY. PROF. ENG. NO. 39497
 PA. PROF. ENG. NO. PE032836E
 VA. PROF. ENG. NO. 023240
 WV. PROF. ENG. NO. 10764

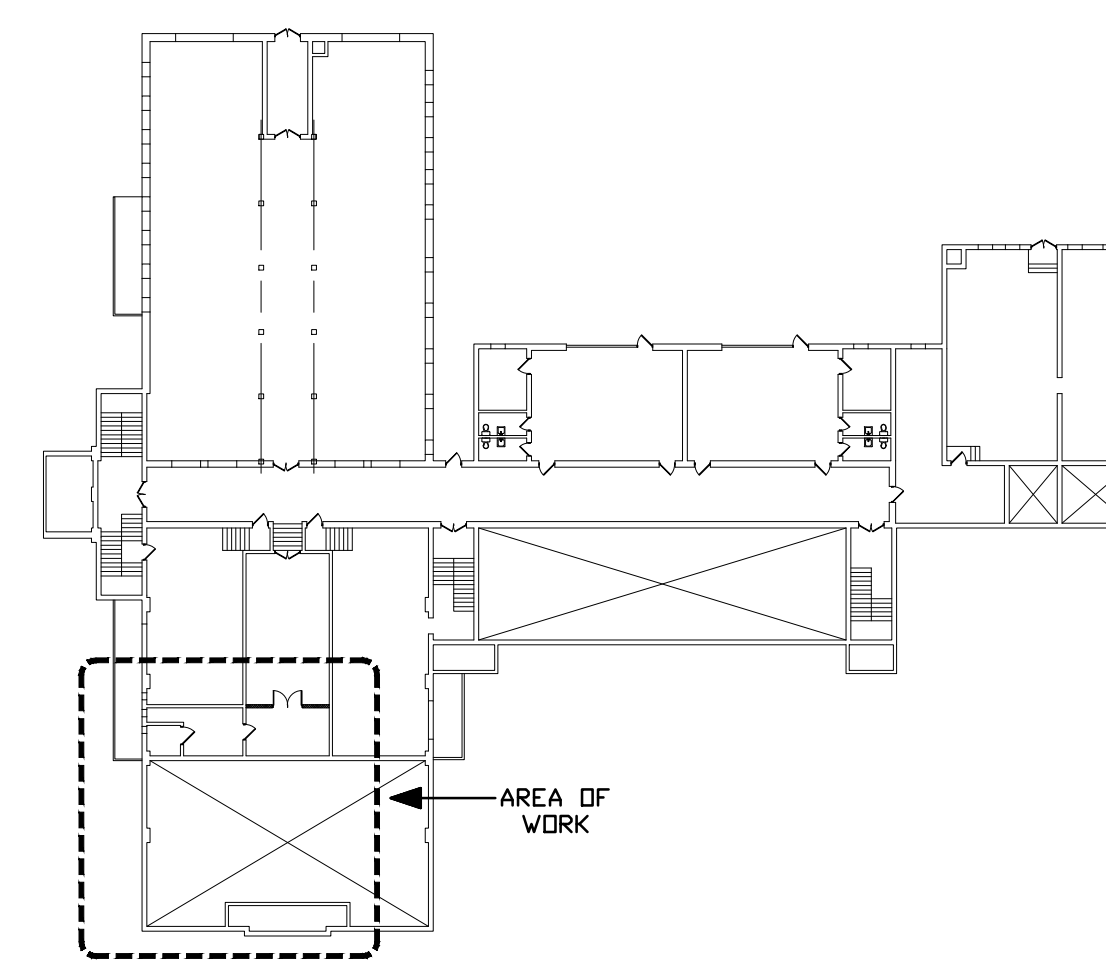
REV.	DATE	COMMENT
	6-25-2021	OWNER REVIEW SET
	7-6-2021	BID/ PERMIT SET

DRAWN BY: **TMM**



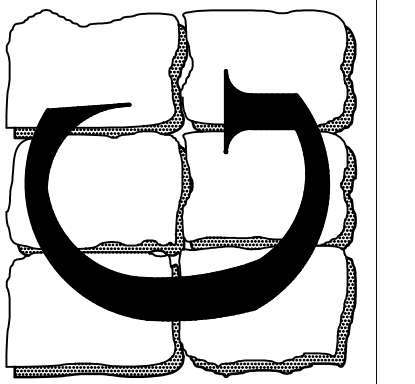
DRAWING KEYED NOTES:
 ① CONTRACTOR SHALL POWER NEW ELECTRICAL ROOM LIGHTS FROM EXISTING LIGHTING CIRCUIT IN ADJACENT STORAGE ROOM.

COMMERCIAL LIGHT FIXTURE SCHEDULE							
MARK	DESCRIPTION	VOLTAGE	NO. OF LAMPS	WATTAGE	LAMP TYPE	MANUFACTURERS AND MODEL NUMBERS	
A	3' LED WALL BRACKET	120	INCLUDED	18	LED	COLUMBIA LIGHTING	W3B3TP-40MW-SFP-EDU-ELL14
COMBO	LED COMBINATION EXIT/EMERGENCY LIGHT	120	2	4.1	LED	COMPASS	CCRS0

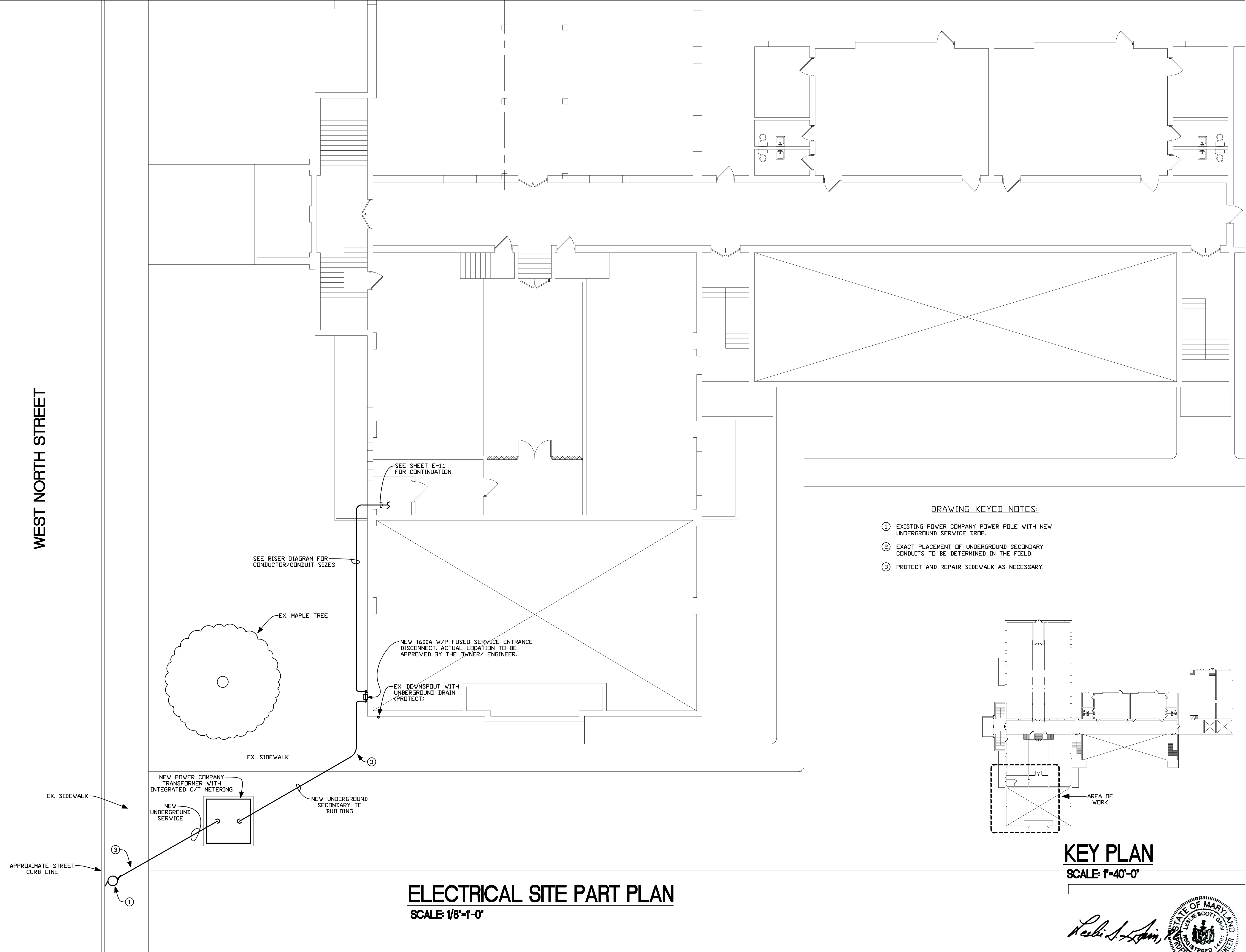


KEY PLAN
 SCALE: 1"=40'-0"

ELECTRICAL LIGHTING PART PLAN
 SCALE: 1/4"=1'-0"

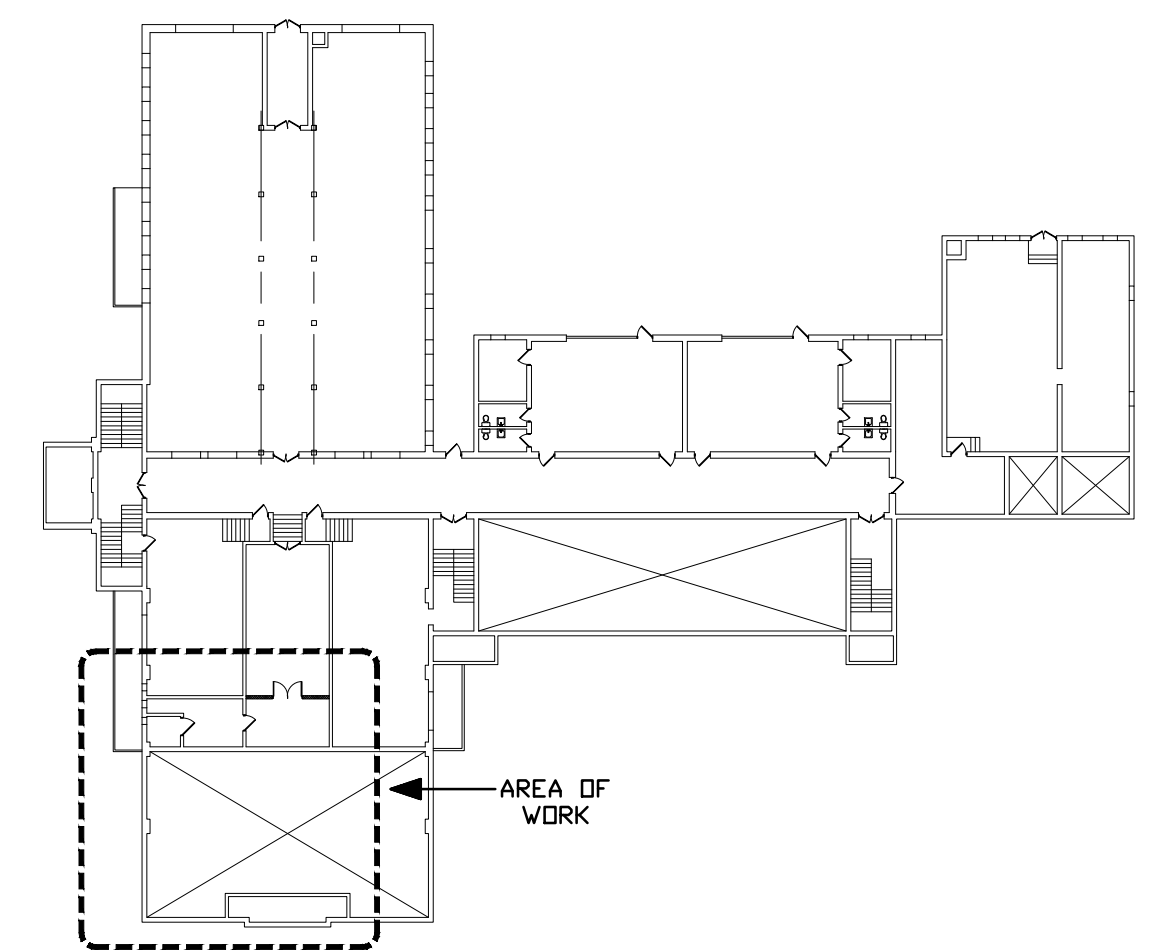


WEST NORTH STREET



DRAWING KEYED NOTES:

- ① EXISTING POWER COMPANY POWER POLE WITH NEW UNDERGROUND SERVICE DROP.
- ② EXACT PLACEMENT OF UNDERGROUND SECONDARY CONDUITS TO BE DETERMINED IN THE FIELD.
- ③ PROTECT AND REPAIR SIDEWALK AS NECESSARY.



KEY PLAN
 SCALE: 1"=40'-0"

ELECTRICAL SITE PART PLAN
 SCALE: 1/8"=1'-0"

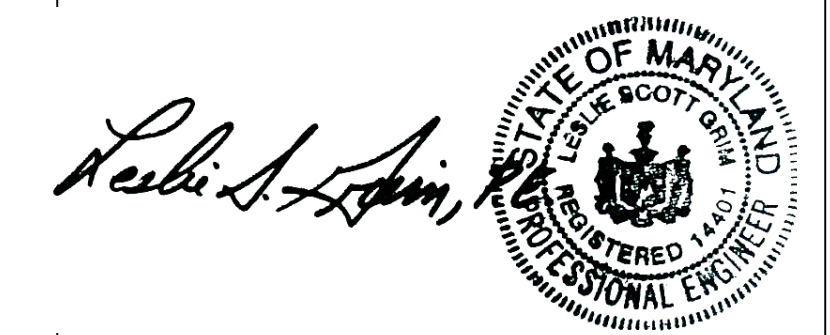
Professional Certification
 I certify that these documents were prepared or approved by me, and that I am a duly licensed engineer under the laws of the State of Maryland
 License Number: 14401
 Expiration Date: 4/21/2023

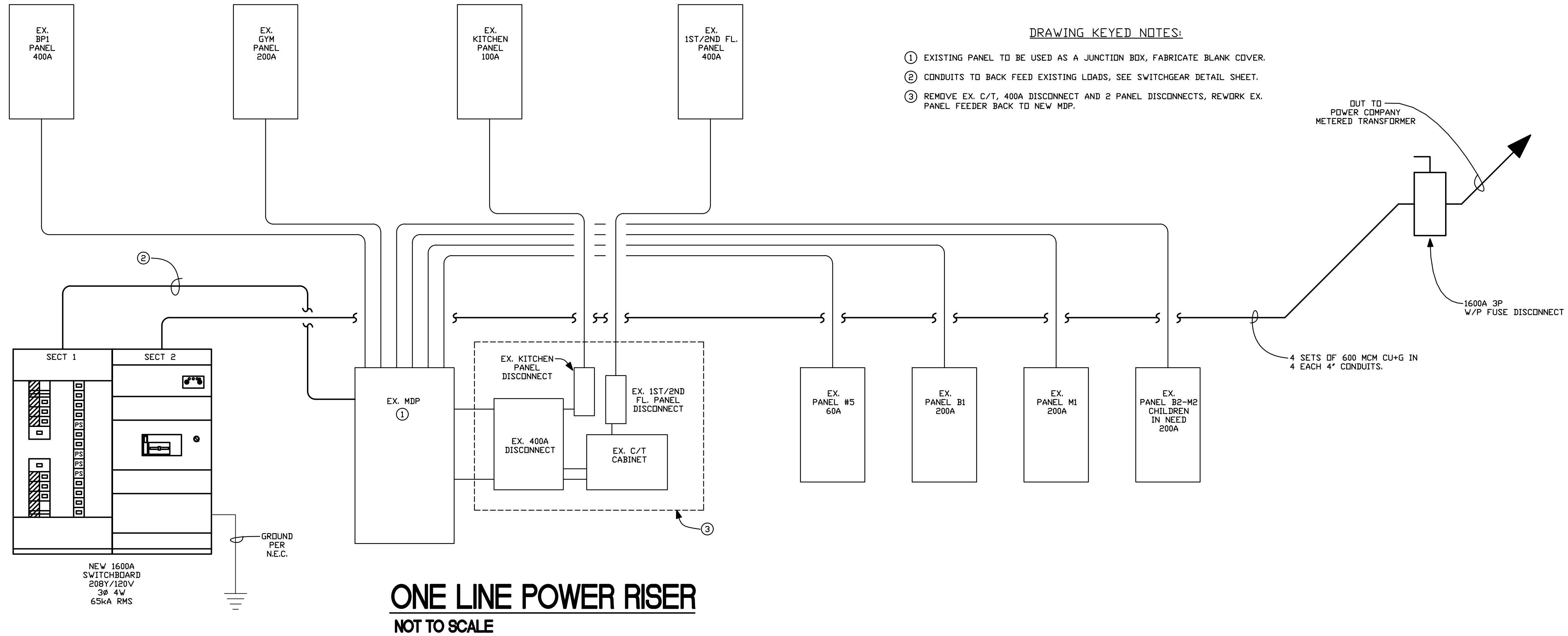
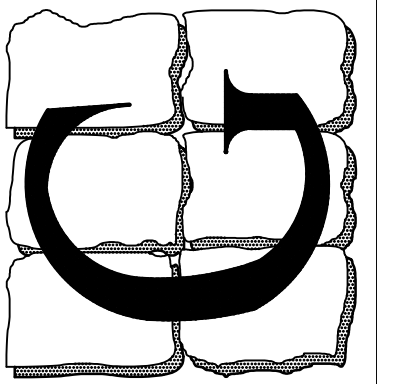
LESLIE SCOTT GRIM, P.E.
 CD PROF. ENG. NO. PE0050461
 DE PROF. ENG. NO. PE90201
 DE PROF. ENG. NO. 19513
 GA PROF. ENG. NO. PE032682
 HI PROF. ENG. NO. PE13043
 MD PROF. ENG. NO. 14401
 NJ PROF. ENG. NO. 033364
 NJ PROF. ENG. NO. 39497
 NY PROF. ENG. NO. 075414
 PA PROF. ENG. NO. PE032636E
 VA PROF. ENG. NO. 023240
 WV PROF. ENG. NO. 10764

REV.	DATE	COMMENT
	6-25-2021	OWNER REVIEW SET
	7-6-2021	BID/ PERMIT SET

DRAWN BY: TMH

E-1.3
 OF 9 SHEETS
 DATE: JULY 6, 2021



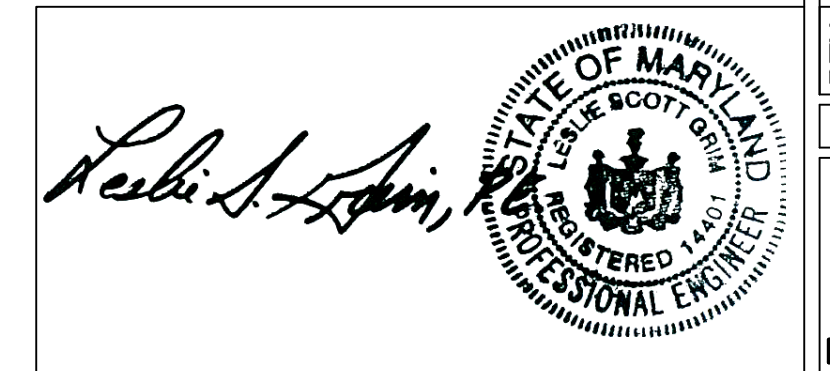


Professional Certification
 I certify that these documents were prepared or approved by me, and that I am a duly licensed engineer under the laws of the State of Maryland
 License Number: 14401
 Expiration Date: 4/21/2023

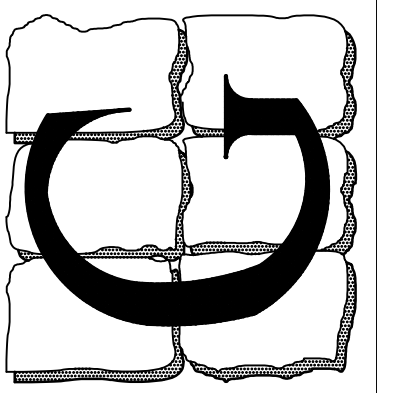
LESLIE SCOTT GRIM, P.E.
 CO. PROF. ENG. NO. PE0050461
 DC. PROF. ENG. NO. PE90201
 DE. PROF. ENG. NO. 19513
 GA. PROF. ENG. NO. PE032682
 HI. PROF. ENG. NO. PE13043
 MD. PROF. ENG. NO. 14401
 NC. PROF. ENG. NO. 033364
 NJ. PROF. ENG. NO. 38497
 NY. PROF. ENG. NO. 075414
 PA. PROF. ENG. NO. PE032836E
 VA. PROF. ENG. NO. 023240
 WV. PROF. ENG. NO. 10764

REV.	DATE	COMMENT
	6-25-2021	OWNER REVIEW SET
	7-6-2021	BID/ PERMIT SET

DRAWN BY: **TMM**
E-2.0
 OF 9 SHEETS
 DATE: JULY 6, 2021



L.S. GRIM, INC.
 19920 JEFFERSON BLVD.
 HAGERSTOWN, MD 21742-4367
 TEL: 410-326-7000
 FAX: 410-326-7001
 TOLL FREE: 1-888-797-GRIM (4746)



Professional Certification I certify that these documents were prepared or approved by me, and that I am a duly licensed engineer under the laws of the State of Maryland License Number: 14401 Expiration Date: 4/21/2023

LESLIE SCOTT GRIM, P.E. CO. PROF. ENG. NO. PE0050461 CE. PROF. ENG. NO. PE0002001 DE. PROF. ENG. NO. 19513 GA. PROF. ENG. NO. PE030582 HI. PROF. ENG. NO. PE13043 MD. PROF. ENG. NO. 14401 NC. PROF. ENG. NO. 033364 NJ. PROF. ENG. NO. 39497 NY. PROF. ENG. NO. 075414 PA. PROF. ENG. NO. PE032636E VA. PROF. ENG. NO. 023240 WV. PROF. ENG. NO. 10764

Product Description: 2 Pole Breaker Phase Sequencing - BC. 2 Pole Breaker Phase Sequencing - BC. 2 Pole Breaker Phase Sequencing - BC. 2 Pole Breaker Phase Sequencing - BC.

Product Description: 2 Pole Breaker Phase Sequencing - BC. 2 Pole Breaker Phase Sequencing - BC. 2 Pole Breaker Phase Sequencing - BC. 2 Pole Breaker Phase Sequencing - BC.

SWITCHBOARD GENERAL NOTES - SERIES 2. PRODUCT DESCRIPTION & RATINGS. Power System Data. Bus System Data. Enclosure Data. Rating. Code Standards. PRODUCT INFORMATION. Wiring. Instruction Bulletins. Product Accessories/Options.

TOP VIEW - FRONT. LEFT SIDE VIEW. FLOOR PLAN - FRONT. Dimensions and layout of the switchboard.

SECTION 1. SECTION 2. Ground Bus per UL981. Detailed wiring diagrams for the switchboard sections.

POWER STYLE QED-2 SWITCHBOARD SERIES 2. Table with columns: SEQ. NO., CK, MD, WIRE RANGE, DEVICE/FRAME, TRIP, FUSE, TRIP, #P, DESIGNATION, N/P, QTY, WIRE RANGE, NEUTR WIRE RANGE, ACCESSORIES / NOTES.



REVISIONS table with columns: REV., DATE, COMMENT. OWNER REVIEW SET. BID/ PERMIT SET. DRAWN BY: TMH. E-3.0 OF 9 SHEETS. DATE JULY 6, 2021