



NOAA - National Weather Service

Tampa Bay Area

2525 14th Avenue SE, Ruskin, Florida 33570

813-645-2323 <https://weather.gov/tampabay>

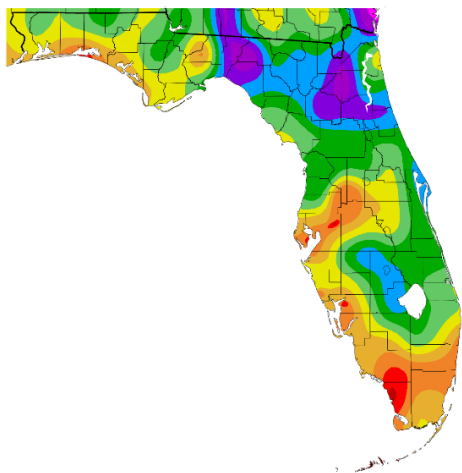
August and Summer 2024 Climate Summary for West Central and Southwest Florida

For August and for the Summer (June/July/August) temperatures across West Central and Southwest Florida averaged from about 0.5 to 3 degrees above normal, with several sites ending up in the Top Ten Warmest for August, Top Three Warmest for Summer (June/July/August), and a few in the Top Ten Warmest Month overall.

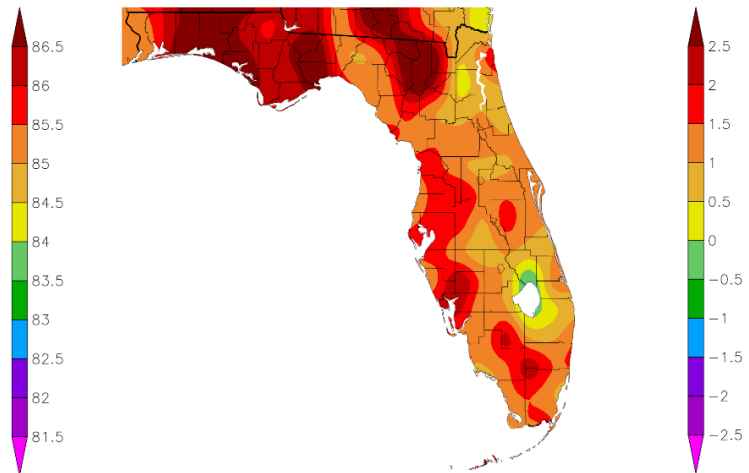
AUGUST TEMPERATURE RANKINGS (°F) :

| Location | August 2024 Ranking | August 2024 Avg Temp | Normal Aug Temp | Dep fm Normal | Records Began |
|-------------------------|---------------------|----------------------|-----------------|---------------|---------------|
| Plant City | 2nd Warmest (tie) | 86.6° | 83.6° | +3.0° | Sep 1892 |
| St Petersburg Area | 3rd Warmest | 86.2° | 84.0° | +2.2° | Aug 1914 |
| Punta Gorda Area | 2nd Warmest | 86.0° | 83.5° | +2.5° | May 1914 |
| Venice | 5th Warmest | 85.1° | 83.1° | +2.0° | May 1955 |
| Winter Haven Area | 5th Warmest (tie) | 84.9° | 84.1° | +0.8° | Mar 1941 |
| Fort Myers Area | 3rd Warmest (tie) | 84.8° | 83.4° | +1.4° | Jan 1902 |
| Tampa Area | 9th Warmest (tie) | 84.7° | 84.0° | +0.7° | Apr 1890 |
| Lakeland Area | 4th Warmest (tie) | 84.6° | 83.3° | +1.3° | Jan 1915 |
| Tarpon Springs | 10th Warmest (tie) | 84.0° | 83.3° | +0.7° | Jan 1892 |
| Sarasota-Bradenton Area | 9th Warmest (tie) | 83.7° | 83.4° | +0.3° | Jan 1911 |
| Wauchula | 5th Warmest (tie) | 83.6° | 82.3° | +1.3° | Jan 1933 |
| Brooksville Area | 5th Warmest | 83.3° | 81.5° | +1.8° | Jan 1892 |
| Myakka River State Pk | 16th Warmest | 83.3° | 83.1° | +0.2° | Mar 1956 |
| Bartow | 22nd Warmest (tie) | 83.3° | 82.3° | +1.0° | Jun 1892 |
| Archbold Bio Stn | 5th Warmest (tie) | 83.1° | 82.1° | +1.0° | Jan 1969 |
| St. Leo | 17th Warmest (tie) | 83.1° | 81.4° | +1.7° | Apr 1895 |
| Chiefland 5 ESE | 6th Warmest (tie) | 82.7° | 80.8° | +1.9° | Jul 1956 |

Temperature (F)
8/1/2024 - 8/31/2024



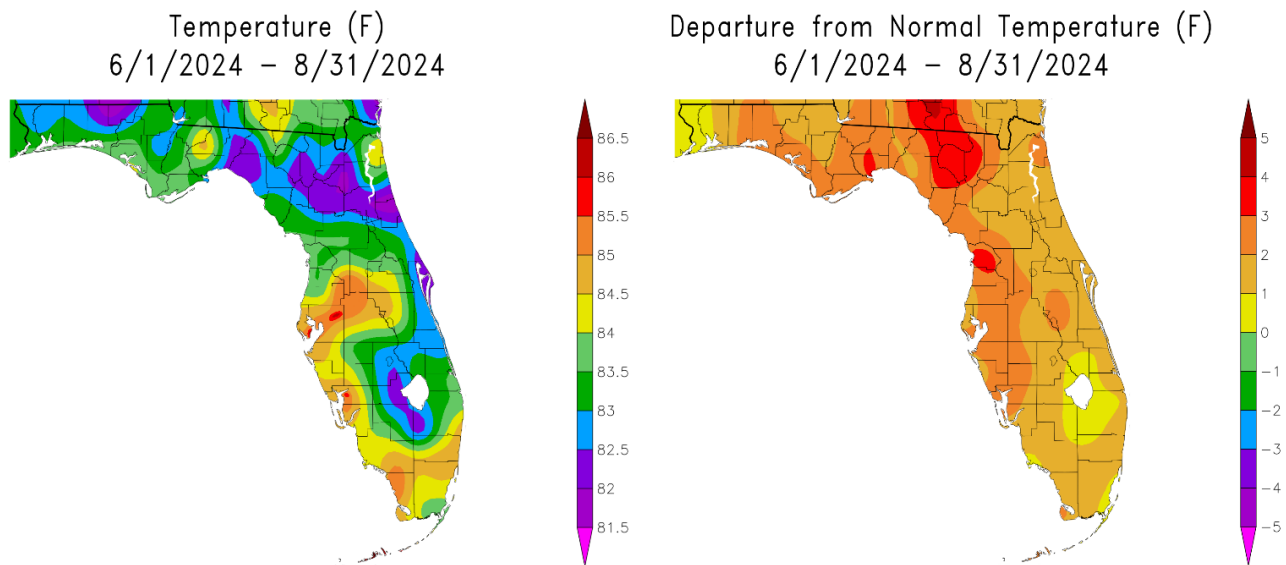
Departure from Normal Temperature (F)
8/1/2024 - 8/31/2024



Graphics Source: NOAA Regional Climate Centers

SUMMER TEMPERATURE RANKINGS (°F) :

| Location | Summer 2024 Ranking | Avg Temp | Normal Sum Temp | Dep fm Normal | Records Began |
|-------------------------|---------------------|----------|-----------------|---------------|---------------|
| Plant City | 1st Warmest (tie) | 86.5° | 83.2° | +3.3° | Sep 1892 |
| St Petersburg Area | 1st Warmest | 86.3° | 83.5° | +2.8° | Aug 1914 |
| Punta Gorda Area | 1st Warmest | 85.7° | 82.8° | +2.9° | May 1914 |
| Winter Haven Area | 1st Warmest | 85.1° | 83.8° | +1.3° | Mar 1941 |
| Venice | 4th Warmest | 84.9° | 82.5° | +2.4° | May 1955 |
| Lakeland Area | 1st Warmest | 84.8° | 82.8° | +2.0° | Jan 1915 |
| Tampa Area | 4th Warmest (tie) | 84.6° | 83.6° | +1.0° | Apr 1890 |
| Fort Myers Area | 4th Warmest (tie) | 84.5° | 83.0° | +1.5° | Jan 1902 |
| Tarpon Springs | 3rd Warmest | 84.3° | 82.8° | +1.5° | Jan 1892 |
| Sarasota-Bradenton Area | 5th Warmest | 83.7° | 82.8° | +0.9° | Jan 1911 |
| Bartow | 6th Warmest | 83.6° | 81.9° | +1.7° | Jun 1892 |
| Brooksville Area | 2nd Warmest | 83.5° | 80.9° | +2.6° | Jan 1892 |
| Wauchula | 2nd Warmest | 83.5° | 81.6° | +1.9° | Jan 1933 |
| St. Leo | 5th Warmest (tie) | 83.0° | 81.0° | +2.0° | Apr 1895 |
| Myakka River State Pk | 11th Warmest (tie) | 83.0° | 82.3° | +0.7° | Mar 1956 |
| Archbold Bio Stn | 3rd Warmest | 82.8° | 81.4° | +1.4° | Jan 1969 |
| Chiefland 5 ESE | 2nd Warmest | 82.7° | 80.2° | +2.5° | Jul 1956 |



Graphics Source: NOAA Regional Climate Centers

The table below list how August 2024 ranked versus any other month since records began at each location. A few sites ended up in the Top Ten for the Warmest Month since records began.

WARMEST MONTH TEMPERATURE RANKINGS (°F):

| Location | August 2024 Ranking | Avg Temp | Record Month and Year | Records Began |
|-------------------------|------------------------|----------|--------------------------|------------------|
| Plant City | 4th Warmest (tie) | 86.6° | 87.8° in Aug 2023 | Sep 1892 |
| St Petersburg Area | 6th Warmest | 86.2° | 87.5° in Aug 2005 | Aug 1914 |
| Punta Gorda Area | 3rd Warmest | 86.0° | 86.7° in Jul 2024 | May 1914 |
| Venice | 13th Warmest | 85.1° | 88.1° in Sep 1988 | May 1955 |
| Winter Haven Area | 10th Warmest (tie) | 84.9° | 86.1° in Jul 2024 | Mar 1941 |
| Fort Myers Area | 10th Warmest (tie) | 84.8° | 86.1° in Jul 2023 | Jan 1902 |
| Tampa Area | 20th Warmest (tie) | 84.7° | 86.9° in Aug 2023 | Apr 1890 |
| Lakeland Area | 11th Warmest (tie) | 84.6° | 86.0° in Aug 2023 | Jan 1915 |
| Tarpon Springs | 25th Warmest (tie) | 84.0° | 85.2° in Aug 2020* | Jan 1892 |
| Sarasota-Bradenton Area | 19th Warmest (tie) | 83.7° | 86.2° in Jul 2023 | Jan 1911 |
| Wauchula | 11th Warmest (tie) | 83.6° | 85.4° in Aug 2009 | Jan 1933 |
| Brooksville Area | 11th Warmest (tie) | 83.3° | 84.6° in Jul 2024* | Jan 1892 |
| Myakka River State Pk | 29th Warmest | 83.3° | 86.7° in Aug 1993 | Mar 1956 |
| Bartow | 49th Warmest (tie) | 83.3° | 87.4° in Aug 2014 | Jun 1892 |
| Archbold Bio Stn | 11th Warmest (tie) | 83.1° | 83.9° in Aug 2023 | Jan 1969 |
| St. Leo | 38th Warmest (tie) | 83.1° | 86.4° in Jun 1998 | Apr 1895 |
| Chiefland 5 ESE | 14th Warmest (tie) | 82.7° | 84.5° in Aug 2023 | Jul 1956 |

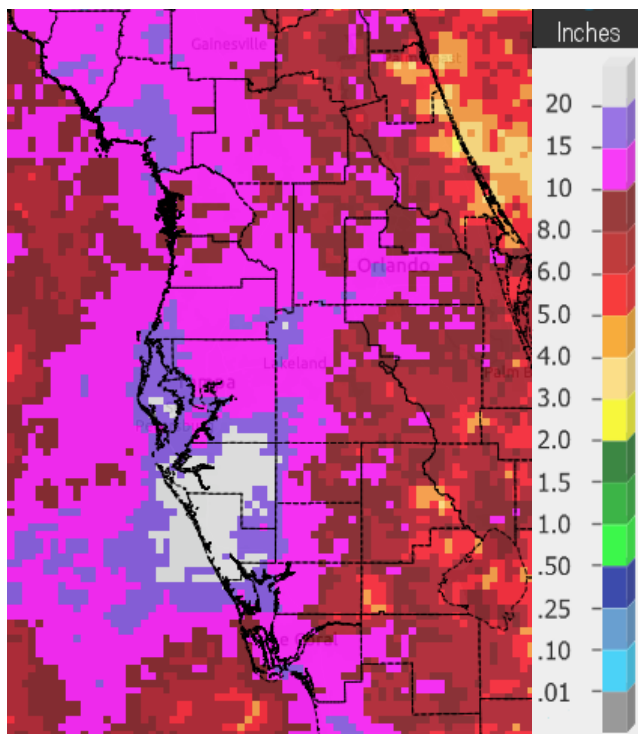
**Last of Multiple Occurrences*

As for rainfall it's was a wet August in many areas thanks to Debby with amounts ranging from as little as 6 inches over the interior to over 20 inches in portions of Manatee and Sarasota Counties. For the summer (June/July/August) totals ranged from around 20 inches to over 40 inches.

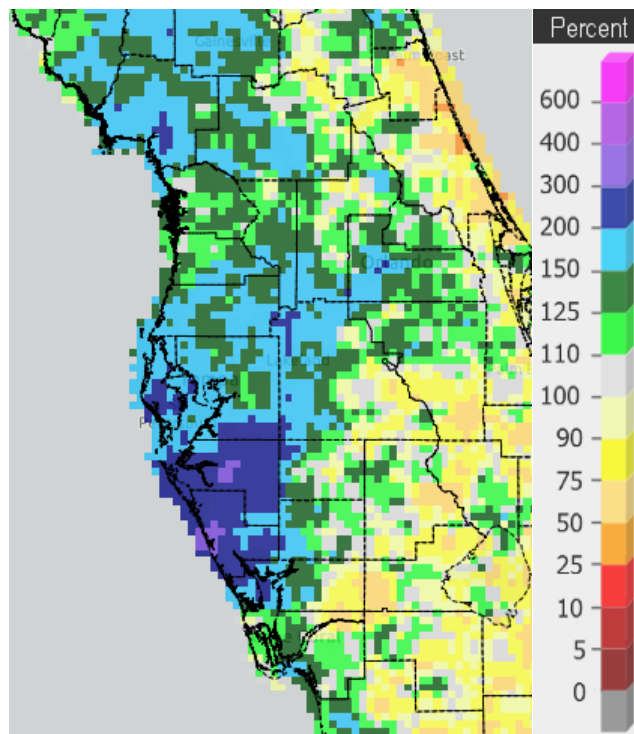
AUGUST RAINFALL RANKINGS (inches) :

| Location | August Rank | 2024 Rain Total | Normal Aug Rain | Dep fm Normal | Records Began |
|--------------------------|--------------|-----------------|-----------------|---------------|---------------|
| Sarasota-Bradenton Area* | | 23.55* | 9.11 | +14.44 | Jan 1911 |
| Venice | 1st Wettest | 21.96 | 8.34 | +13.62 | May 1955 |
| Myakka River State Pk | 4th Wettest | 17.90 | 10.12 | +7.78 | Sep 1943 |
| Tampa Area | 3rd Wettest | 17.78 | 9.03 | +8.75 | Apr 1890 |
| Chiefland 5 ESE | 11th Wettest | 14.20 | 9.87 | +4.33 | Jul 1956 |
| Plant City | 8th Wettest | 14.15 | 8.85 | +5.30 | Feb 1893 |
| St. Leo | 10th Wettest | 13.79 | 8.28 | +5.51 | Apr 1895 |
| Punta Gorda Area | 8th Wettest | 12.75 | 9.11 | +3.64 | May 1914 |
| Fort Myers Area | 19th Wettest | 12.20 | 10.43 | +1.77 | Jan 1902 |
| Tarpon Springs | 28th Wettest | 11.96 | 9.66 | +2.30 | Jan 1892 |
| Lakeland Area | 13th Wettest | 10.73 | 9.08 | +1.65 | Jan 1915 |
| Brooksville Area | 35th Wettest | 10.03 | 8.12 | +1.91 | Jan 1892 |
| Wauchula | 19th Wettest | 9.98 | 8.46 | +1.52 | Jan 1933 |
| Bartow | 38th Wettest | 9.43 | 7.78 | +1.65 | Jun 1892 |
| Winter Haven Area | 23rd Wettest | 8.50 | 6.52 | +1.98 | Mar 1941 |
| Archbold Bio Stn | 24th Driest | 7.27 | 8.49 | -1.22 | Jan 1969 |

* Rainfall was missing on August 5th at Sarasota-Bradenton due to equipment failure. Radar estimates and local rain gauges indicate that 3 to 4 inches of rain fell on this day which would make this the Wettest August on record.



August 2024 Rainfall

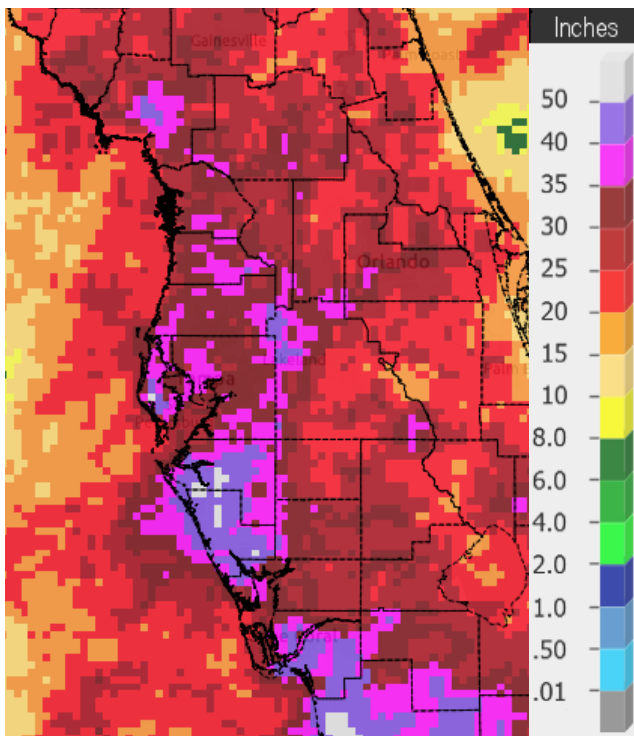


Percent of Normal

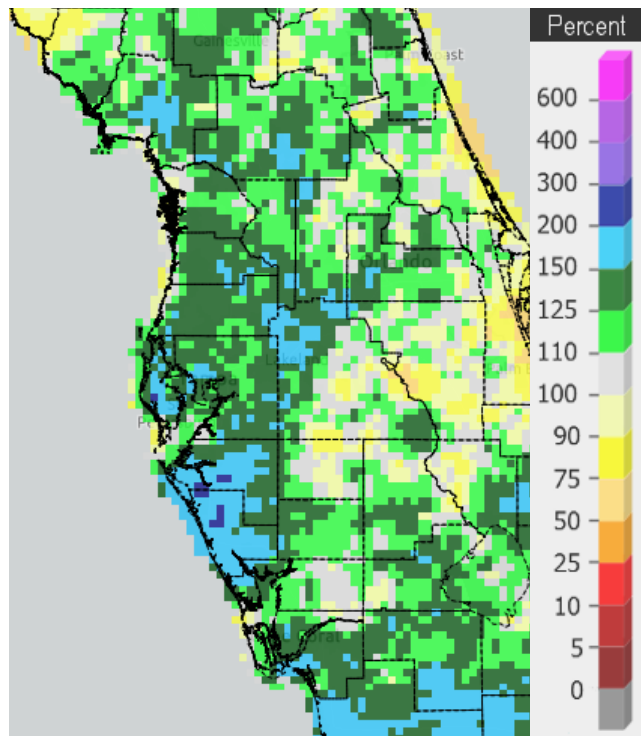
SUMMER RAINFALL RANKINGS (inches) :

| Location | Summer Rank | 2024 Rain Total | Normal Sum Rain | Dep fm Normal | Records Began |
|--------------------------|--------------|-----------------|-----------------|---------------|---------------|
| Sarasota-Bradenton Area* | 1st Wettest | 47.32* | 23.55 | +1x.95 | Jan 1911 |
| Fort Myers Area | 1st Wettest | 43.87 | 29.47 | +14.40 | Jan 1902 |
| Tampa Area | 2nd Wettest | 38.52 | 24.15 | +14.37 | Apr 1890 |
| Myakka River State Pk | 9th Wettest | 38.00 | 29.88 | +8.12 | Sep 1943 |
| Venice | 4th Wettest | 37.69 | 23.54 | +14.15 | May 1955 |
| Plant City | 15th Wettest | 34.35 | 27.21 | +7.14 | Feb 1893 |
| Brooksville Area | 31st Wettest | 29.85 | 25.44 | +4.41 | Jan 1892 |
| St. Leo | 39th Wettest | 27.53 | 24.72 | +2.81 | Apr 1895 |
| Lakeland Area | 28th Wettest | 27.17 | 26.62 | +0.55 | Jan 1915 |
| Punta Gorda Area | 32nd Wettest | 26.68 | 26.41 | +0.27 | May 1914 |
| Tarpon Springs | 39th Wettest | 26.41 | 25.77 | +0.64 | Jan 1892 |
| Chiefland 5 ESE | 30th Driest | 25.85 | 26.22 | -0.37 | Jul 1956 |
| Bartow | 55th Wettest | 24.79 | 23.62 | +1.17 | Jun 1892 |
| Archbold Bio Stn | 32nd Driest | 24.71 | 25.68 | -0.97 | Jan 1969 |
| Wauchula | 43rd Driest | 24.46 | 24.61 | -0.15 | Jan 1933 |
| Winter Haven Area | 37th Wettest | 22.39 | 21.32 | +1.07 | Mar 1941 |

* Rainfall was missing on August 5th due to equipment failure. Radar estimates and local rain gauges indicate that 3 to 4 inches of rain fell on this day which would increase the Summer rainfall even more.



**Total Rainfall
June 1 - August 31, 2024**



**Percent of Normal
June 1 - August 31, 2024**

On the following pages are tables of the Top Ten Warmest, Coolest, Wettest, and Driest August's and Summers at some official NWS locations, which includes the average/total for this August and Summer where available, as well as the 1991-2020 Normal (average) temperature and rainfall for these time periods. Also included are tables listing the Top Ten Warmest Average Monthly Temperatures, Warmest Monthly Average Maximum Temperatures, and the Warmest Monthly Average Minimum Temperatures.

CHIEFLAND 5 ESE (records began in July 1956):

| Warmest August's | | Coolest August's | | Wettest August's | | Driest August's | |
|------------------|---------------------|------------------|--------------|------------------|----------------------|-----------------|--------------|
| 1 | 84.5 in 2023 | 1 | 78.3 in 1969 | 1 | 20.44 in 1971 | 1 | 3.17 in 1980 |
| 2 | 83.4 in 1980 | 2 | 78.9 in 1967 | 2 | 17.10 in 1986 | 2 | 3.71 in 1973 |
| 3 | 82.9 in 2020 | 3 | 79.0 in 1994 | 3 | 16.59 in 1985 | 3 | 3.84 in 2023 |
| 4 | 82.9 in 2018 | 4 | 79.3 in 2008 | 4 | 16.44 in 2015 | 4 | 3.97 in 2000 |
| 5 | 82.8 in 1999 | 5 | 79.4 in 1996 | 5 | 14.61 in 1988 | 5 | 4.06 in 1956 |
| 6 | 82.7 in 2024 | 6 | 79.5 in 2003 | 6 | 14.55 in 1961 | 6 | 5.28 in 2014 |
| | 82.7 in 2022 | | 79.5 in 2002 | 7 | 14.43 in 1979 | 7 | 5.36 in 2009 |
| | 82.7 in 2016 | | 79.5 in 1979 | 8 | 14.33 in 2010 | 8 | 5.50 in 1963 |
| 9 | 82.6 in 2015 | 9 | 79.7 in 2004 | | 14.33 in 1966 | 9 | 5.51 in 1976 |
| 10 | 82.5 in 2011 | | 79.7 in 1966 | 10 | 14.23 in 1968 | 10 | 5.72 in 1987 |
| | 82.5 in 1987 | | | 11 | 14.20 in 2024 | | |

Normal August Temp at CHIF1 = 80.8°
 Normal August Rain at CHIF1 = 9.87 in.

| Warmest Summers | | Coolest Summers | | Wettest Summers | | Driest Summers | |
|-----------------|---------------------|-----------------|--------------|-----------------|----------------------|----------------|----------------------|
| 1 | 82.9 in 2016 | 1 | 79.0 in 1965 | 1 | 37.95 in 2012 | 1 | 15.28 in 1973 |
| 2 | 82.7 in 2024 | 2 | 79.1 in 1974 | 2 | 36.55 in 2019 | 2 | 15.58 in 2014 |
| 3 | 82.6 in 1998 | | 79.1 in 1966 | 3 | 36.38 in 2001 | 3 | 18.48 in 1969 |
| 4 | 82.5 in 2015 | 4 | 79.2 in 1969 | 4 | 35.41 in 1965 | 4 | 18.49 in 1972 |
| 5 | 82.4 in 2023 | 5 | 79.4 in 2008 | 5 | 34.90 in 2018 | 5 | 18.54 in 2006 |
| 6 | 82.3 in 2022 | | 79.4 in 2002 | 6 | 34.89 in 1964 | 6 | 18.76 in 1998 |
| 7 | 82.0 in 2018 | | 79.4 in 1994 | 7 | 34.88 in 2003 | 7 | 19.05 in 2011 |
| 8 | 81.9 in 2017 | | 79.4 in 1972 | 8 | 34.30 in 2013 | 8 | 19.17 in 1977 |
| 9 | 81.8 in 2020 | 9 | 79.5 in 1979 | 9 | 34.21 in 1974 | 9 | 19.48 in 1993 |
| 10 | 81.7 in 2011 | | 79.5 in 1963 | 10 | 33.23 in 1988 | 10 | 19.57 in 2007 |
| | | | | ... | | ... | |
| | | | | 35 | 25.85 in 2024 | 30 | 25.85 in 2024 |

Normal Summer Temp at CHIF1 = 80.2°
 Normal Summer Rain at CHIF1 = 26.22 in.

| Warmest Monthly Avg Temp | Warmest Monthly Avg Max Temps | Warmest Monthly Avg Min Temps |
|-----------------------------|----------------------------------|----------------------------------|
| 1 84.5 in Aug 2023 | 1 95.4 in Jun 1989 | 1 74.9 in Aug 2021 |
| 2 83.8 in Jul 2016 | 2 94.6 in Jul 1983 | 2 74.5 in Aug 2023 |
| 3 83.5 in Jul 2023 | 94.6 in Jun 1977 | 3 74.4 in Aug 2015 |
| 4 83.4 in Aug 1980 | 4 94.5 in Aug 2023 | 4 74.3 in Aug 2019 |
| 5 83.2 in Sep 2018 | 94.5 in Jun 1998 | 5 74.2 in Jul 2023 |
| 6 83.1 in Jul 2024 | 94.5 in Jul 1981 | 6 74.1 in Aug 2024 |
| 83.1 in Jul 1983 | 7 94.3 in Aug 1980 | 7 73.9 in Aug 2020 |
| 8 83.0 in Jul 1998 | 8 94.2 in Jul 1987 | 73.9 in Sep 2018 |
| 83.0 in Jul 1987 | 9 94.1 in Jun 1985 | 73.9 in Aug 2018 |
| 10 82.9 in Aug 2020 | 10 94.0 in Jul 2016 | 10 73.8 in Jul 2024 |
| 82.9 in Aug 2018 | ... | 73.8 in Aug 2016 |
| 12 82.8 in Jul 2015 | 76 91.6 in Aug 2024 | 73.8 in Aug 2010 |
| 82.8 in Aug 1999 | 91.6 in Jul 1995 | 73.8 in Aug 1999 |
| 14 82.7 in Aug 2024 | 91.6 in Jun 1960 | 73.8 in Jul 1998 |
| 82.7 in Aug 2022 | | |
| 82.7 in Aug 2016 | | |

INVERNESS 3 SE (records began in July 1948):

| Warmest August's | Coollest August's | Wettest August's | Driest August's |
|------------------|-------------------|------------------|-----------------|
| 1 84.4 in 2011 | 1 78.1 in 1994 | 1 16.70 in 1949 | 1 1.77 in 1963 |
| 2 84.0 in 2010 | 2 78.5 in 2004 | 2 16.58 in 2008 | 2 2.43 in 1993 |
| 3 83.7 in 1954 | 3 79.8 in 1997 | 3 16.19 in 1961 | 3 3.08 in 2013 |
| 4 83.4 in 1956 | 4 79.9 in 1976 | 4 15.87 in 1953 | 4 3.27 in 1999 |
| 5 83.3 in 2022 | 5 80.0 in 1992 | 5 15.03 in 1992 | 5 3.86 in 1989 |
| 83.3 in 2016 | 6 80.2 in 2003 | 6 13.35 in 1985 | 6 3.88 in 1997 |
| 7 83.2 in 2020 | 7 80.4 in 2002 | 7 13.15 in 1970 | 7 4.18 in 2014 |
| 83.2 in 1955 | 80.4 in 1996 | 8 12.97 in 1965 | 8 4.48 in 1987 |
| 9 83.0 in 1983 | 9 80.7 in 1986 | 9 12.63 in 2019 | 9 4.50 in 1973 |
| 83.0 in 1963 | 80.7 in 1949 | 10 12.43 in 1968 | 10 4.57 in 2001 |
| | 80.7 in 1948 | | |

Average Temperature for August 1-25, 2024 = 83.3°
Normal August Temp at INVFl = 80.7°

Total Rainfall for August 1-25, 2024 = 9.27 in.
Normal August Rain at INVFl = 8.69 in.

| Warmest Summers | | Coolest Summers | | Wettest Summers | | Driest Summers | |
|-----------------|--------------|-----------------|--------------|-----------------|---------------|----------------|---------------|
| 1 | 83.9 in 2010 | 1 | 78.4 in 1994 | 1 | 37.83 in 1965 | 1 | 14.38 in 1993 |
| 2 | 83.4 in 2016 | 2 | 79.6 in 2003 | 2 | 36.34 in 2003 | 2 | 14.48 in 1952 |
| 3 | 83.2 in 2022 | | 79.6 in 1995 | 3 | 35.38 in 1985 | 3 | 14.73 in 1998 |
| | 83.2 in 2011 | 4 | 79.9 in 1997 | 4 | 35.23 in 1949 | 4 | 15.10 in 1997 |
| 5 | 83.0 in 1998 | 5 | 80.0 in 2004 | 5 | 35.17 in 1953 | 5 | 16.47 in 1979 |
| 6 | 82.9 in 2020 | 6 | 80.1 in 2018 | 6 | 34.33 in 1960 | 6 | 17.02 in 1999 |
| | 82.9 in 2019 | 7 | 80.2 in 1991 | 7 | 34.30 in 1982 | 7 | 17.32 in 1987 |
| 8 | 82.6 in 1981 | 8 | 80.3 in 2001 | 8 | 34.06 in 2002 | 8 | 17.39 in 1972 |
| | 82.6 in 1969 | | 80.3 in 1996 | 9 | 33.99 in 2012 | 9 | 17.84 in 2006 |
| | 82.6 in 1954 | | 80.3 in 1986 | 10 | 32.74 in 2008 | 10 | 17.96 in 1956 |
| | 82.6 in 1952 | | | | | | |

Average Temperature for June 1 - August 25, 2024 = 83.6°
 Normal Summer Temp at INVFl = 80.4°

Total Rainfall for June 1 - August 25, 2024 = 24.00 in.
 Normal Summer Rain at INVFl = 24.62 in.

| Warmest Monthly Avg Temp | | Warmest Monthly Avg Max Temps | | Warmest Monthly Avg Min Temps | |
|-----------------------------|------------------|----------------------------------|------------------|----------------------------------|------------------|
| 1 | 84.6 in Jul 2016 | 1 | 96.8 in Jul 2016 | 1 | 75.1 in Jul 2023 |
| 2 | 84.4 in Aug 2011 | 2 | 95.9 in Jun 1998 | 2 | 74.7 in Jul 2024 |
| 3 | 84.3 in Jul 2024 | 3 | 95.8 in Jun 2010 | 3 | 74.5 in Aug 2021 |
| 4 | 84.2 in Jul 2023 | 4 | 95.7 in Jun 2011 | | 74.5 in Aug 2010 |
| 5 | 84.0 in Aug 2010 | 5 | 95.1 in Jun 2015 | 5 | 74.3 in Aug 2019 |
| | 84.0 in Jul 2010 | | 95.1 in Jun 1981 | | 74.3 in Aug 2011 |
| 7 | 83.8 in Jul 1969 | 7 | 95.0 in Aug 1956 | 7 | 74.2 in Aug 2020 |
| 8 | 83.7 in Aug 1954 | 8 | 94.7 in Jul 2010 | 8 | 74.1 in Jul 1969 |
| 9 | 83.6 in Jun 1981 | | 94.7 in Jun 1950 | 9 | 74.0 in Aug 2022 |
| 10 | 83.5 in Ju3 2020 | 10 | 94.5 in Jun 1977 | | 74.0 in Aug 1983 |
| | 83.5 in Jun 2010 | | 94.5 in Aug 1955 | | |
| | 83.5 in Jul 1979 | | | | |

Average Temperature for August 1-25, 2024 = 83.3°
 Average Max Temperature for August 1-25, 2024 = 92.2°
 Average Min Temperature for August 1-25, 2024 = 74.4°

BROOKSVILLE AREA (records began in January 1892):

| Warmest August's | | Coolest August's | | Wettest August's | | Driest August's | |
|------------------|---------------------|------------------|--------------|------------------|----------------------|-----------------|----------------------|
| 1 | 84.6 in 2023 | 1 | 79.1 in 1922 | 1 | 23.95 in 1949 | 1 | 2.61 in 1955 |
| 2 | 83.9 in 1926 | | 79.1 in 1894 | 2 | 20.91 in 1945 | 2 | 2.65 in 1958 |
| 3 | 83.8 in 2011 | 3 | 79.2 in 1994 | 3 | 17.47 in 1905 | 3 | 2.68 in 2002 |
| 4 | 83.5 in 2017 | 4 | 79.3 in 1932 | 4 | 17.13 in 1928 | 4 | 2.76 in 1963 |
| 5 | 83.3 in 2024 | | 79.3 in 1892 | 5 | 16.34 in 1901 | 5 | 3.45 in 1919 |
| 6 | 83.2 in 1928 | 6 | 79.5 in 1949 | 6 | 14.84 in 1965 | 6 | 3.68 in 2009 |
| 7 | 83.1 in 1927 | | 79.5 in 1920 | | 14.84 in 1957 | 7 | 3.76 in 1916 |
| 8 | 83.0 in 2022 | | 79.5 in 1898 | 8 | 14.19 in 1995 | 8 | 3.88 in 1951 |
| 9 | 82.9 in 2013 | 9 | 79.6 in 1904 | 9 | 13.74 in 1910 | 9 | 4.12 in 1976 |
| | 82.9 in 1963 | 10 | 79.7 in 1901 | 10 | 13.68 in 1939 | 10 | 4.15 in 1997 |
| | 82.9 in 1941 | | | ... | | ... | |
| | 82.9 in 1933 | | | 35 | 10.03 in 2024 | 97 | 10.03 in 2024 |

Normal August Temp at BKV = 81.5°
 Normal August Rain at BKV = 8.12 in.

| Warmest Summers | | Coolest Summers | | Wettest Summers | | Driest Summers | |
|-----------------|---------------------|-----------------|--------------|-----------------|----------------------|----------------|----------------------|
| 1 | 83.6 in 1927 | 1 | 78.4 in 1894 | 1 | 57.08 in 1945 | 1 | 13.03 in 1996 |
| 2 | 83.5 in 2024 | 2 | 78.8 in 1920 | 2 | 41.37 in 2003 | 2 | 13.05 in 1997 |
| 3 | 83.0 in 2023 | 3 | 79.0 in 1922 | 3 | 41.33 in 1949 | 3 | 14.06 in 1979 |
| 4 | 82.6 in 2011 | 4 | 79.1 in 1921 | 4 | 39.60 in 1943 | 4 | 14.34 in 1958 |
| 5 | 82.5 in 2022 | 5 | 79.3 in 1904 | 5 | 38.64 in 1928 | 5 | 14.97 in 1931 |
| 6 | 82.4 in 1928 | 6 | 79.4 in 1947 | 6 | 38.55 in 1906 | 6 | 14.99 in 1954 |
| 7 | 82.3 in 2017 | | 79.4 in 1946 | 7 | 37.96 in 2013 | 7 | 15.06 in 1902 |
| | 82.3 in 1981 | 8 | 79.5 in 1965 | 8 | 37.46 in 1905 | 8 | 15.56 in 1973 |
| 9 | 82.2 in 2019 | | 79.5 in 1949 | 9 | 36.81 in 2012 | 9 | 15.84 in 1955 |
| | 82.2 in 2010 | | 79.5 in 1919 | 10 | 34.93 in 2015 | 10 | 15.90 in 1916 |
| | 82.2 in 1998 | | | ... | | ... | |
| | | | | 31 | 29.85 in 2024 | 99 | 29.85 in 2024 |

Normal Summer Temp at BKV = 80.9°
 Normal Summer Rain at BKV = 25.44 in

| Warmest Monthly Avg Temp | | Warmest Monthly Avg Max Temps | | Warmest Monthly Avg Min Temps | |
|-----------------------------|-------------------------|----------------------------------|-------------------------|----------------------------------|-------------------------|
| 1 | 84.6 in Jul 2024 | 1 | 97.0 in Jun 1927 | 1 | 75.1 in Aug 2011 |
| | 84.6 in Aug 2023 | 2 | 95.5 in Jul 1930 | 2 | 74.9 in Aug 1941 |
| 3 | 84.2 in Jun 1927 | 3 | 95.2 in Jul 1931 | 3 | 74.8 in Aug 1899 |
| 4 | 83.9 in Aug 1926 | | 95.2 in Jul 1927 | 4 | 74.7 in Jul 2024 |
| 5 | 83.8 in Jul 2023 | 5 | 95.1 in May 1927 | 5 | 74.6 in Aug 1995 |
| | 83.8 in Aug 2011 | 6 | 94.9 in Aug 1926 | 6 | 74.5 in Aug 2023 |
| 7 | 83.6 in Jul 1930 | 7 | 94.8 in Aug 2023 | 7 | 74.4 in Jul 1942 |
| | 83.6 in Jul 1927 | | 94.8 in Jun 1998 | 8 | 74.3 in Aug 2017 |
| 9 | 83.5 in Aug 2017 | 9 | 94.6 in Jul 2024 | 9 | 74.2 in Aug 2010 |
| | 83.5 in Jul 1931 | 10 | 94.3 in Jun 1935 | | 74.2 in Aug 1909 |
| 11 | 83.3 in Aug 2024 | ... | | 11 | 74.0 in Aug 2024 |
| | 83.3 in Jul 1942 | 44 | 92.5 in Aug 2024 | | 74.0 in Aug 2019 |
| | | | 92.5 in Jun 2022 | | |
| | | | 92.5 in Aug 2011 | | |
| | | | 92.5 in Jul 2011 | | |
| | | | 92.5 in Aug 2007 | | |
| | | | 92.5 in Jun 1918 | | |

ST LEO (records began in April 1895):

| Warmest August's | | Coolest August's | | Wettest August's | | Driest August's | |
|------------------|---------------------|------------------|--------------|------------------|----------------------|-----------------|--------------|
| 1 | 84.8 in 2007 | 1 | 77.5 in 1922 | 1 | 20.16 in 1898 | 1 | 2.16 in 1930 |
| 2 | 84.7 in 2005 | 2 | 79.4 in 1920 | 2 | 19.75 in 1901 | 2 | 2.72 in 1980 |
| 3 | 84.2 in 2023 | | 79.4 in 1913 | 3 | 17.60 in 1945 | 3 | 2.97 in 1921 |
| 4 | 84.1 in 1900 | 4 | 79.5 in 1930 | 4 | 16.99 in 1979 | 4 | 3.05 in 1915 |
| 5 | 84.0 in 1987 | | 79.5 in 1919 | 5 | 16.26 in 1905 | 5 | 3.78 in 1938 |
| 6 | 83.9 in 1941 | | 79.5 in 1904 | 6 | 16.08 in 1965 | 6 | 3.90 in 1941 |
| 7 | 83.7 in 1924 | 7 | 79.7 in 1992 | 7 | 14.97 in 1967 | 7 | 4.03 in 1996 |
| 8 | 83.6 in 2006 | 8 | 79.8 in 1917 | 8 | 14.56 in 1917 | | 4.03 in 1976 |
| | 83.6 in 1983 | 9 | 80.1 in 1923 | 9 | 14.20 in 1942 | 9 | 4.17 in 1924 |
| | 83.6 in 1951 | | 80.1 in 1911 | 10 | 13.79 in 2024 | 10 | 4.25 in 2005 |
| | 83.6 in 1899 | | | | | | |
| 12 | 83.5 in 1980 | | | | | | |
| | 83.5 in 1963 | | | | | | |
| | 83.5 in 1954 | | | | | | |
| 15 | 83.4 in 2009 | | | | | | |
| 16 | 83.2 in 1998 | | | | | | |
| 17 | 83.1 in 2024 | | | | | | |
| | 83.1 in 1999 | | | | | | |
| | 83.1 in 1995 | | | | | | |
| | 83.1 in 1993 | | | | | | |
| | 83.1 in 1989 | | | | | | |

Normal August Temp at STLF1 = 81.4°
Normal August Rain at STLF1 = 8.28 in.

| Warmest Summers | | Coolest Summers | | Wettest Summers | | Driest Summers | |
|-----------------|---------------------|-----------------|--------------|-----------------|----------------------|----------------|----------------------|
| 1 | 84.6 in 1998 | 1 | 78.2 in 1922 | 1 | 53.02 in 1945 | 1 | 12.71 in 1930 |
| 2 | 83.4 in 2005 | 2 | 78.5 in 1919 | 2 | 43.25 in 1901 | 2 | 14.51 in 1958 |
| 3 | 83.2 in 1987 | 3 | 78.6 in 1920 | 3 | 40.38 in 1934 | 3 | 15.09 in 1951 |
| | 83.2 in 1900 | 4 | 78.8 in 1930 | 4 | 37.52 in 2012 | 4 | 15.97 in 1987 |
| 5 | 83.0 in 2024 | 5 | 78.9 in 1923 | 5 | 36.13 in 1898 | 5 | 15.98 in 1915 |
| | 83.0 in 2006 | 6 | 79.2 in 1904 | 6 | 35.05 in 1965 | 6 | 16.10 in 1980 |
| 7 | 82.9 in 1981 | 7 | 79.3 in 1921 | 7 | 35.02 in 1943 | | 16.10 in 1902 |
| | 82.9 in 1896 | 8 | 79.5 in 1918 | 8 | 34.48 in 2002 | 8 | 16.20 in 1921 |
| 9 | 82.8 in 2023 | | 79.5 in 1910 | 9 | 33.33 in 2003 | 9 | 16.94 in 1997 |
| | 82.8 in 2007 | 10 | 79.6 in 1935 | 10 | 32.26 in 1906 | 10 | 17.01 in 1952 |
| | 82.8 in 1924 | | 79.6 in 1917 | ... | | ... | |
| | | | 79.6 in 1913 | 39 | 27.53 in 2024 | 92 | 27.53 in 2024 |

Normal Summer Temp at STL1 = 81.0°
Normal Summer Rain at STL1 = 24.72 in

| Warmest Monthly Avg Temp | | Warmest Monthly Avg Max Temps | | Warmest Monthly Avg Min Temps | |
|--------------------------|-------------------------|-------------------------------|-------------------------|-------------------------------|-------------------------|
| 1 | 86.4 in Jun 1998 | 1 | 96.7 in Jun 1998 | 1 | 76.1 in Jun 1998 |
| 2 | 84.8 in Aug 2007 | 2 | 95.4 in Jun 1898 | 2 | 75.8 in Aug 2023 |
| 3 | 84.7 in Aug 2005 | 3 | 95.0 in Jun 1981 | 3 | 75.2 in Aug 2024 |
| 4 | 84.3 in Jul 2005 | | 95.0 in Jul 1896 | 4 | 75.1 in Jul 2023 |
| | 84.3 in Jul 1998 | 5 | 94.8 in Aug 2007 | | 75.1 in Aug 2005 |
| 6 | 84.2 in Aug 2023 | 6 | 94.7 in Aug 1987 | 6 | 74.9 in Aug 1995 |
| 7 | 84.1 in Aug 1900 | | 94.7 in Aug 1900 | 7 | 74.7 in Aug 2007 |
| 8 | 84.0 in Aug 1987 | | 94.7 in Jun 1899 | | 74.7 in Jul 2005 |
| 9 | 83.9 in Jul 1942 | | 94.7 in Jun 1897 | 9 | 74.6 in Jul 1998 |
| | 83.9 in Aug 1941 | 10 | 94.5 in Jul 1942 | 10 | 74.4 in Jul 2024 |
| ... | | ... | | | 74.4 in Aug 1941 |
| 38 | 83.1 in Aug 2024 | 243 | 90.9 in Aug 2024 | | |
| | 83.1 in Aug 1999 | | 90.9 in Jul 2011 | | |
| | 83.1 in Aug 1995 | | 90.9 in May 2008 | | |
| | 83.1 in Aug 1993 | | 90.9 in Jul 2001 | | |
| | 83.1 in Jul 1993 | | 90.9 in Sep 1993 | | |
| | 83.1 in Aug 1989 | | 90.9 in Aug 1992 | | |
| | 83.1 in Jun 1952 | | 90.9 in Jul 1986 | | |
| | | | 90.9 in Sep 1977 | | |
| | | | 90.9 in Jul 1954 | | |
| | | | 90.9 in Sep 1939 | | |
| | | | 90.9 in Jun 1937 | | |
| | | | 90.9 in Jul 1930 | | |
| | | | 90.9 in Jul 1913 | | |
| | | | 90.9 in Jun 1900 | | |

TARPON SPRINGS (records began in January 1892):

| Warmest August's | | Coolest August's | | Wettest August's | | Driest August's | |
|------------------|---------------------|------------------|--------------|------------------|----------------------|-----------------|----------------------|
| 1 | 85.2 in 2020 | 1 | 79.5 in 1905 | 1 | 23.60 in 1949 | 1 | 1.96 in 1930 |
| 2 | 84.9 in 1995 | | 79.5 in 1904 | 2 | 20.99 in 1906 | 2 | 2.02 in 1899 |
| 3 | 84.3 in 1993 | 3 | 79.6 in 1969 | 3 | 18.97 in 2017 | 3 | 2.39 in 1963 |
| 4 | 84.2 in 2014 | | 79.6 in 1900 | 4 | 18.52 in 1969 | 4 | 2.57 in 2001 |
| | 84.2 in 2007 | 5 | 80.1 in 1967 | 5 | 17.77 in 1957 | 5 | 2.84 in 1964 |
| | 84.2 in 1999 | | 80.1 in 1892 | 6 | 17.06 in 1928 | 6 | 2.90 in 1934 |
| | 84.2 in 1997 | 7 | 80.2 in 1894 | 7 | 16.99 in 2010 | 7 | 3.70 in 2006 |
| 8 | 84.1 in 2019 | 8 | 80.4 in 1911 | 8 | 16.80 in 1905 | 8 | 3.72 in 1921 |
| | 84.1 in 2017 | | 80.4 in 1910 | 9 | 16.67 in 1939 | 9 | 4.33 in 1916 |
| 10 | 84.0 in 2024 | | 80.4 in 1907 | 10 | 16.05 in 1898 | 10 | 4.39 in 1936 |
| | 84.0 in 2005 | | | ... | | ... | |
| | 84.0 in 2004 | | | 28 | 11.96 in 2024 | 105 | 11.96 in 2024 |
| | 84.0 in 1941 | | | | | | |

Normal August Temp at TRPF1 = 83.3°
 Normal August Rain at TRPF1 = 9.66 in

| Warmest Summers | | Coolest Summers | | Wettest Summers | | Driest Summers | |
|-----------------|---------------------|-----------------|--------------|-----------------|----------------------|----------------|----------------------|
| 1 | 84.5 in 2020 | 1 | 79.0 in 1904 | 1 | 45.10 in 1909 | 1 | 11.64 in 1952 |
| 2 | 84.4 in 2004 | | 79.0 in 1900 | 2 | 44.25 in 2012 | 2 | 12.65 in 1956 |
| 3 | 84.3 in 2024 | 3 | 79.1 in 1894 | 3 | 41.21 in 1906 | 3 | 12.87 in 1970 |
| 4 | 84.1 in 1998 | 4 | 79.4 in 1907 | 4 | 37.71 in 1957 | 4 | 13.49 in 1916 |
| 5 | 83.9 in 1993 | 5 | 79.5 in 1895 | 5 | 37.51 in 2015 | 5 | 13.64 in 1914 |
| 6 | 83.8 in 2019 | 6 | 79.6 in 1974 | 6 | 37.28 in 2019 | 6 | 14.17 in 1980 |
| | 83.8 in 2016 | | 79.6 in 1939 | 7 | 36.54 in 1943 | 7 | 14.80 in 1976 |
| | 83.8 in 2005 | | 79.6 in 1910 | 8 | 36.47 in 1939 | 8 | 14.90 in 1902 |
| 9 | 83.7 in 1997 | 9 | 79.7 in 1908 | 9 | 36.17 in 1928 | 9 | 15.07 in 1988 |
| 10 | 83.6 in 2014 | 10 | 79.8 in 1892 | 10 | 36.10 in 1945 | 10 | 15.17 in 1993 |
| | 83.6 in 2010 | | | ... | | ... | |
| | | | | 39 | 26.41 in 2024 | 93 | 26.41 in 2024 |

Normal Summer Temp at TRPF1 = 82.8°
 Normal Summer Rain at TRPF1 = 25.77 in

| Warmest Monthly Avg Temp | | Warmest Monthly Avg Max Temps | | Warmest Monthly Avg Min Temps | |
|--------------------------|-------------------------|-------------------------------|-------------------------|-------------------------------|-------------------------|
| 1 | 85.2 in Aug 2020 | 1 | 95.0 in Jul 1993 | 1 | 78.4 in Aug 2020 |
| | 85.2 in Jul 1932 | 2 | 94.9 in Jun 1998 | | 78.4 in Jul 2020 |
| 3 | 85.1 in Jul 2020 | 3 | 94.6 in Jul 1932 | 3 | 78.2 in Jun 2005 |
| 4 | 85.0 in Jul 2024 | 4 | 94.5 in Sep 1925 | 4 | 78.1 in Aug 2004 |
| | 85.0 in Jul 1993 | 5 | 94.4 in Jul 1997 | 5 | 77.9 in Jul 2004 |
| 6 | 84.9 in Aug 1995 | 6 | 94.3 in Aug 1997 | 6 | 77.8 in Jun 2004 |
| 7 | 84.8 in Jul 1942 | | 94.3 in Jul 1942 | 7 | 77.6 in Aug 2019 |
| 8 | 84.7 in Jul 2016 | 8 | 94.0 in Aug 1998 | 8 | 77.5 in Jul 2007 |
| | 84.7 in Jul 1997 | | 94.0 in Jul 1992 | 9 | 77.4 in Aug 2007 |
| 10 | 84.6 in Jul 2004 | 10 | 93.7 in Sep 1997 | | 77.4 in Aug 2005 |
| | 84.6 in Jun 2004 | | 93.7 in Aug 1995 | ... | |
| ... | | ... | | 19 | 76.6 in Aug 2024 |
| 25 | 84.0 in Aug 2024 | 104 | 91.5 in Aug 2024 | | 76.6 in Sep 2018 |
| | 84.0 in Jun 2019 | | 91.5 in Jun 2024 | | 76.6 in Jul 2018 |
| | 84.0 in Aug 2005 | | 91.5 in Aug 2018 | | 76.6 in Aug 2016 |
| | 84.0 in Aug 2004 | | 91.5 in Sep 1995 | | 76.6 in Jun 2016 |
| | 84.0 in Jul 1992 | | 91.5 in Jul 1994 | | 76.6 in Jul 2014 |
| | 84.0 in Aug 1941 | | 91.5 in Jul 1991 | | |
| | 84.0 in Sep 1925 | | 91.5 in Jul 1990 | | |
| | | | 91.5 in Aug 1975 | | |
| | | | 91.5 in Aug 1954 | | |
| | | | 91.5 in Aug 1945 | | |
| | | | 91.5 in Aug 1927 | | |
| | | | 91.5 in Oct 1919 | | |
| | | | 91.5 in Sep 1906 | | |

TAMPA AREA (records began in April 1890):

| Warmest August's | | Coolest August's | | Wettest August's | | Driest August's | |
|------------------|---------------------|------------------|--------------|------------------|----------------------|-----------------|--------------|
| 1 | 86.9 in 2023 | 1 | 80.2 in 1905 | 1 | 18.59 in 1949 | 1 | 0.78 in 1938 |
| 2 | 85.6 in 2022 | 2 | 80.3 in 1967 | 2 | 17.83 in 1898 | 2 | 2.35 in 1952 |
| 3 | 85.1 in 2011 | | 80.3 in 1913 | 3 | 17.78 in 2024 | 3 | 2.38 in 1921 |
| | 85.1 in 1941 | 4 | 80.4 in 1922 | 4 | 16.47 in 2015 | 4 | 2.83 in 2001 |
| 5 | 85.0 in 2021 | 5 | 80.5 in 1901 | 5 | 15.17 in 1932 | 5 | 3.27 in 1990 |
| | 85.0 in 2017 | 6 | 80.6 in 1904 | 6 | 14.90 in 2003 | 6 | 3.47 in 1924 |
| 7 | 84.9 in 2007 | | 80.6 in 1890 | 7 | 14.66 in 1905 | 7 | 3.52 in 2009 |
| 8 | 84.8 in 2020 | 8 | 80.7 in 1939 | 8 | 14.60 in 2018 | 8 | 3.63 in 1919 |
| 9 | 84.7 in 2024 | | 80.7 in 1911 | 9 | 14.29 in 1939 | 9 | 3.75 in 1907 |
| | 84.7 in 2005 | 10 | 80.8 in 1969 | 10 | 14.03 in 2004 | 10 | 3.87 in 1941 |
| | | | 80.8 in 1957 | | | | |
| | | | 80.8 in 1898 | | | | |

Normal August Temp at TPA = 84.0°
Normal August Rain at TPA = 9.03 in

| Warmest Summers | | Coolest Summers | | Wettest Summers | | Driest Summers | |
|-----------------|---------------------|-----------------|--------------|-----------------|----------------------|----------------|---------------|
| 1 | 85.7 in 2022 | 1 | 80.1 in 1910 | 1 | 43.03 in 1945 | 1 | 11.16 in 1993 |
| 2 | 85.6 in 2023 | 2 | 80.2 in 1955 | 2 | 38.52 in 2024 | 2 | 13.15 in 1956 |
| 3 | 84.8 in 2020 | | 80.2 in 1913 | 3 | 36.13 in 2012 | 3 | 13.25 in 1970 |
| 4 | 84.6 in 2024 | | 80.2 in 1904 | 4 | 34.79 in 1909 | 4 | 13.85 in 1978 |
| | 84.6 in 2021 | 5 | 80.3 in 1967 | 5 | 34.67 in 1960 | 5 | 14.00 in 1977 |
| 6 | 84.5 in 2010 | 6 | 80.4 in 1965 | 6 | 34.54 in 2015 | 6 | 14.25 in 1918 |
| 7 | 84.4 in 2011 | 7 | 80.5 in 1968 | 7 | 33.71 in 1925 | 7 | 15.05 in 1931 |
| 8 | 84.2 in 1998 | | 80.5 in 1890 | 8 | 33.68 in 1896 | 8 | 15.65 in 2001 |
| 9 | 83.9 in 2018 | 9 | 80.6 in 1907 | 9 | 33.66 in 1995 | 9 | 15.73 in 1944 |
| | 83.9 in 2017 | | 80.6 in 1899 | 10 | 33.46 in 1957 | 10 | 15.88 in 1952 |
| | 83.9 in 2016 | | 80.6 in 1894 | | | | |

Normal Summer Temp at TPA = 83.6°
Normal Summer Rain at TPA = 24.15 in

| Warmest Monthly Avg Temp | | Warmest Monthly Avg Max Temps | | Warmest Monthly Avg Min Temps | |
|--------------------------|-------------------------|-------------------------------|-------------------------|-------------------------------|-------------------------|
| 1 | 86.9 in Aug 2023 | 1 | 94.3 in Aug 2023 | 1 | 79.7 in Jul 2023 |
| 2 | 86.5 in Jul 2023 | 2 | 93.5 in Aug 1951 | 2 | 79.5 in Aug 2023 |
| 3 | 86.3 in Jul 2022 | 3 | 93.4 in Jul 2022 | 3 | 79.2 in Jul 2022 |
| 4 | 85.8 in Sep 2018 | 4 | 93.3 in Jul 2023 | 4 | 78.8 in Aug 2011 |
| 5 | 85.6 in Aug 2022 | 5 | 93.0 in Sep 2018 | 5 | 78.6 in Aug 2022 |
| | 85.6 in Jun 1998 | | 93.0 in Jun 1998 | 6 | 78.5 in Sep 2018 |
| 7 | 85.5 in Jul 2020 | 7 | 92.9 in Jul 1942 | 7 | 78.3 in Aug 2021 |
| 8 | 85.2 in Jun 2022 | 8 | 92.8 in Jun 1952 | | 78.3 in Jul 2020 |
| 9 | 85.1 in Aug 2011 | 9 | 92.7 in Jul 1992 | | 78.3 in Aug 2017 |
| | 85.1 in Aug 1941 | | 92.7 in Aug 1990 | 10 | 78.2 in Aug 2010 |
| ... | | ... | | 11 | 78.1 in Aug 2024 |
| 20 | 84.7 in Aug 2024 | 77 | 91.2 in Aug 2024 | | 78.1 in Jul 2021 |
| | 84.7 in Aug 2005 | | 91.2 in Aug 2013 | | 78.1 in Jun 1998 |
| | | | 91.2 in Jul 2010 | | |
| | | | 91.2 in Aug 1991 | | |
| | | | 91.2 in Jul 1988 | | |
| | | | 91.2 in Jun 1987 | | |
| | | | 91.2 in Jun 1969 | | |
| | | | 91.2 in Jul 1927 | | |

ST PETERSBURG (records began in August 1914):

| Warmest August's | | Coolest August's | | Wettest August's | | Driest August's | |
|------------------|---------------------|------------------|--------------|------------------|---------------|-----------------|--------------|
| 1 | 87.5 in 2005 | 1 | 80.8 in 1922 | 1 | 21.85 in 1939 | 1 | 0.82 in 1938 |
| 2 | 86.8 in 2023 | 2 | 81.3 in 1939 | 2 | 19.57 in 1949 | 2 | 2.91 in 1984 |
| 3 | 86.2 in 2024 | 3 | 81.4 in 1947 | 3 | 18.62 in 1915 | 3 | 2.96 in 1941 |
| 4 | 85.7 in 2013 | 4 | 81.5 in 1953 | 4 | 17.93 in 1967 | 4 | 3.21 in 1998 |
| 5 | 85.4 in 2017 | 5 | 81.6 in 1957 | 5 | 17.75 in 1995 | 5 | 3.33 in 1951 |
| 6 | 85.3 in 2014 | 6 | 81.8 in 1995 | 6 | 16.65 in 1971 | 6 | 3.37 in 1919 |
| | 85.3 in 1941 | | 81.8 in 1994 | 7 | 16.53 in 1945 | 7 | 3.40 in 1933 |
| 8 | 85.2 in 2007 | | 81.8 in 1974 | 8 | 16.04 in 1922 | 8 | 3.66 in 2005 |
| 9 | 85.0 in 2010 | | 81.8 in 1917 | 9 | 15.49 in 2016 | 9 | 3.67 in 1996 |
| | 85.0 in 1980 | 10 | 81.9 in 2016 | 10 | 15.33 in 1947 | 10 | 4.30 in 1914 |
| | | | 81.9 in 1967 | | | | |
| | | | 81.9 in 1949 | | | | |

Normal Temp August at SPG = 84.0°

Total Rainfall for August 2024 = Several Days Missing

Normal August Rain at SPG = 8.39 in.

| Warmest Summers | | Coolest Summers | | Wettest Summers | | Driest Summers | |
|-----------------|---------------------|-----------------|--------------|-----------------|---------------|----------------|---------------|
| 1 | 86.3 in 2024 | 1 | 80.9 in 1922 | 1 | 47.62 in 1945 | 1 | 10.52 in 1931 |
| 2 | 85.7 in 2005 | 2 | 81.1 in 1974 | 2 | 45.31 in 1939 | 2 | 11.17 in 1984 |
| 3 | 85.6 in 2010 | | 81.1 in 1955 | 3 | 40.99 in 1995 | 3 | 11.48 in 1970 |
| 4 | 85.1 in 2023 | 4 | 81.2 in 1947 | 4 | 38.08 in 1943 | 4 | 12.32 in 1930 |
| 5 | 84.6 in 1987 | 5 | 81.4 in 1920 | 5 | 36.66 in 1947 | 5 | 12.39 in 1916 |
| 6 | 84.5 in 2020 | 6 | 81.6 in 1995 | 6 | 35.03 in 2016 | 6 | 13.10 in 1996 |
| | 84.5 in 2017 | | 81.6 in 1923 | 7 | 35.00 in 1922 | 7 | 13.14 in 1993 |
| | 84.5 in 1998 | | 81.6 in 1919 | 8 | 34.49 in 1974 | 8 | 14.18 in 1941 |
| 9 | 84.3 in 2022 | 9 | 81.7 in 1968 | 9 | 33.26 in 1959 | 9 | 14.31 in 1966 |
| | 84.3 in 2013 | | 81.7 in 1965 | 10 | 32.62 in 1971 | 10 | 14.99 in 1951 |
| | 84.3 in 1980 | | 81.7 in 1956 | | | | |
| | | | 81.7 in 1953 | | | | |
| | | | 81.7 in 1917 | | | | |

Normal Summer Temp at SPG = 83.5°

Total Rainfall for Summer 2024 = Several Days Missing in August

Normal Summer Rain at SPG = 22.67 in.

| Warmest Monthly Avg Temp | Warmest Monthly Avg Max Temps | Warmest Monthly Avg Min Temps |
|-----------------------------|----------------------------------|----------------------------------|
| 1 87.5 in Aug 2005 | 1 93.7 in Aug 2005 | 1 81.4 in Aug 2023 |
| 2 87.0 in Jul 2024 | 2 93.5 in Jul 1932 | 2 81.3 in Aug 2005 |
| 3 86.8 in Aug 2023 | 3 93.0 in Jul 2024 | 3 80.9 in Jul 2024 |
| 4 86.7 in Jul 2005 | 4 92.9 in Jun 2010 | 4 80.8 in Aug 2024 |
| 5 86.5 in Jun 2010 | 5 92.8 in Jul 1987 | 5 80.7 in Jul 2023 |
| 6 86.2 in Aug 2024 | 92.8 in Aug 1941 | 80.7 in Jul 2005 |
| 7 85.8 in Jul 2023 | 92.8 in Jul 1931 | 7 80.1 in Aug 2010 |
| 8 85.7 in Aug 2013 | 8 92.7 in Jul 2005 | 80.1 in Jun 2010 |
| 85.7 in Sep 2005 | 9 92.5 in Aug 1980 | 9 80.0 in Sep 2005 |
| 85.7 in Jul 1932 | 92.5 in Jun 1977 | 10 79.9 in Aug 2014 |
| | ... | |
| | 30 91.7 in Aug 2024 | |
| | 91.7 in Jun 2024 | |
| | 91.7 in Aug 1987 | |
| | 91.7 in Jul 1972 | |
| | 91.7 in Jun 1964 | |
| | 91.7 in Aug 1934 | |
| | 91.7 in Aug 1924 | |

PLANT CITY (Temperature records began in September 1892 and
Rainfall records began in February 1893):

| Warmest August's | Coolest August's | Wettest August's | Driest August's |
|-----------------------|------------------|------------------------|-----------------|
| 1 87.8 in 2023 | 1 78.7 in 1930 | 1 17.79 in 2004 | 1 1.87 in 1902 |
| 2 86.6 in 2024 | 2 79.1 in 1907 | 2 17.48 in 1953 | 2 2.44 in 1960 |
| 86.6 in 2022 | 3 79.6 in 1939 | 3 17.17 in 1949 | 3 3.62 in 1912 |
| 4 85.6 in 2017 | 79.6 in 1906 | 4 16.43 in 2019 | 4 3.88 in 2021 |
| 5 85.4 in 2021 | 5 79.7 in 1931 | 5 15.69 in 1906 | 5 3.98 in 1996 |
| 85.4 in 2020 | 6 79.9 in 1905 | 6 15.06 in 1898 | 6 4.08 in 1954 |
| 7 84.6 in 2018 | 7 80.1 in 2000 | 7 14.96 in 1939 | 7 4.29 in 1991 |
| 8 84.3 in 2011 | 8 80.2 in 1933 | 8 14.15 in 2024 | 8 4.58 in 1997 |
| 9 84.1 in 2019 | 80.2 in 1911 | 9 14.04 in 1967 | 9 4.76 in 1914 |
| 10 83.9 in 2007 | 10 80.3 in 1973 | 10 13.95 in 1979 | 10 4.80 in 1934 |
| 83.9 in 1980 | 80.3 in 1967 | | |
| | 80.3 in 1904 | | |

Normal Temp August at PLCF1 = 83.6°
Normal Rain August at PLCF1 = 8.85 in.

| Warmest Summers | Coollest Summers | Wettest Summers | Driest Summers |
|-----------------------|------------------|-------------------------|------------------|
| 1 86.5 in 2024 | 1 79.7 in 1919 | 1 41.73 in 1943 | 1 14.60 in 1956 |
| 86.5 in 2023 | 2 79.8 in 1923 | 2 40.04 in 1910 | 2 14.98 in 1915 |
| 3 85.6 in 2022 | 3 79.9 in 1921 | 3 39.69 in 1945 | 3 15.23 in 1989 |
| 4 85.1 in 2020 | 79.9 in 1920 | 4 39.40 in 2004 | 4 15.34 in 1993 |
| 5 84.6 in 2021 | 5 80.2 in 1967 | 5 38.91 in 2019 | 5 15.36 in 1961 |
| 84.6 in 2017 | 80.2 in 1947 | 6 38.77 in 2017 | 6 15.52 in 1952 |
| 7 84.5 in 2019 | 80.2 in 1930 | 7 37.53 in 1939 | 7 16.01 in 1951 |
| 8 84.1 in 2018 | 8 80.3 in 1966 | 8 36.18 in 1925 | 8 17.02 in 1970 |
| 9 84.0 in 2016 | 80.3 in 1965 | 9 36.08 in 1906 | 9 17.30 in 1988 |
| 10 83.4 in 2010 | 10 80.4 in 1974 | 10 35.94 in 1905 | 10 17.39 in 1987 |
| | 80.4 in 1968 | 11 35.02 in 1953 | |
| | 80.4 in 1929 | 12 34.82 in 2012 | |
| | | 13 34.71 in 1986 | |
| | | 14 34.64 in 1928 | |
| | | 15 34.35 in 2024 | |

Normal Summer Temp at PLCF1 = 83.2°
Normal Summer Rain at PLCF1 = 27.21 in.

| Warmest Monthly Avg Temp | Warmest Monthly Avg Max Temps | Warmest Monthly Avg Min Temps |
|-----------------------------|----------------------------------|----------------------------------|
| 1 87.8 in Aug 2023 | 1 99.3 in Aug 2023 | 1 76.8 in Jul 2024 |
| 2 87.5 in Jul 2023 | 2 99.2 in Jul 2023 | 2 76.4 in Aug 2024 |
| 3 87.3 in Jul 2024 | 3 97.8 in Jul 2024 | 3 76.3 in Aug 2023 |
| 4 86.6 in Aug 2024 | 4 97.6 in Aug 2022 | 4 75.9 in Aug 2021 |
| 86.6 in Aug 2022 | 5 96.9 in Aug 2024 | 75.9 in Aug 2020 |
| 6 85.9 in Jul 2022 | 6 96.7 in Jun 2024 | 75.9 in Jul 2020 |
| 7 85.7 in Jun 2024 | 7 96.5 in Jul 2022 | 7 75.8 in Jul 2023 |
| 8 85.6 in Aug 2017 | 96.5 in Jun 1911 | 75.8 in Aug 2011 |
| 9 85.5 in Jul 2020 | 9 96.4 in May 2024 | 9 75.7 in Aug 2019 |
| 10 85.4 in Aug 2021 | 96.4 in Jun 2023 | 75.7 in Aug 2017 |
| 85.4 in Aug 2020 | | |

LAKELAND (records began in January 1915):

| Warmest August's | | Coolest August's | | Wettest August's | | Driest August's | |
|------------------|---------------------|------------------|--------------|------------------|----------------------|-----------------|--------------|
| 1 | 86.0 in 2023 | 1 | 80.0 in 1967 | 1 | 15.57 in 1948 | 1 | 3.40 in 1942 |
| 2 | 85.1 in 1987 | 2 | 80.5 in 1973 | 2 | 15.19 in 2010 | 2 | 3.58 in 1921 |
| 3 | 84.8 in 2022 | | 80.5 in 1949 | 3 | 14.15 in 1935 | 3 | 3.65 in 1947 |
| 4 | 84.6 in 2024 | 4 | 80.6 in 1939 | 4 | 13.49 in 1915 | 4 | 3.73 in 1930 |
| | 84.6 in 1995 | | 80.6 in 1923 | 5 | 12.63 in 2019 | 5 | 3.89 in 1950 |
| 6 | 84.4 in 2021 | | 80.6 in 1920 | 6 | 12.52 in 2004 | 6 | 3.98 in 1960 |
| | 84.4 in 1989 | 7 | 80.8 in 1969 | 7 | 12.23 in 2015 | 7 | 4.22 in 2021 |
| 8 | 84.3 in 2020 | | 80.8 in 1957 | 8 | 11.97 in 1928 | 8 | 4.56 in 1982 |
| | 84.3 in 2011 | 9 | 80.9 in 1959 | 9 | 11.93 in 1949 | 9 | 4.61 in 1934 |
| | 84.3 in 2010 | 10 | 81.0 in 1953 | 10 | 11.37 in 2016 | 10 | 4.68 in 1970 |
| | | | 81.0 in 1922 | 11 | 10.93 in 1988 | | |
| | | | | 12 | 10.87 in 2007 | | |
| | | | | 13 | 10.73 in 2024 | | |

Normal Temp August at LLDF1 = 83.3°
 Normal Rain August at LLDF1 = 9.08 in.

| Warmest Summers | | Coolest Summers | | Wettest Summers | | Driest Summers | |
|-----------------|---------------------|-----------------|--------------|-----------------|----------------------|----------------|---------------|
| 1 | 84.8 in 2024 | 1 | 79.7 in 1919 | 1 | 43.60 in 2017 | 1 | 13.76 in 1958 |
| 2 | 84.6 in 2023 | 2 | 79.8 in 1923 | 2 | 36.50 in 2015 | 2 | 13.88 in 1998 |
| | 84.6 in 2010 | 3 | 79.9 in 1921 | 3 | 34.42 in 2019 | 3 | 13.96 in 1918 |
| 4 | 84.4 in 1987 | | 79.9 in 1920 | 4 | 33.76 in 2013 | 4 | 14.67 in 1972 |
| 5 | 84.1 in 2022 | 5 | 80.2 in 1967 | 5 | 33.29 in 1994 | 5 | 15.35 in 1936 |
| 6 | 84.0 in 2016 | | 80.2 in 1947 | 6 | 32.40 in 2005 | 6 | 15.51 in 1931 |
| 7 | 83.8 in 2020 | | 80.2 in 1930 | 7 | 32.12 in 1968 | 7 | 16.05 in 1950 |
| | 83.8 in 1998 | 8 | 80.3 in 1966 | 8 | 31.87 in 2001 | 8 | 16.71 in 1942 |
| | 83.8 in 1989 | | 80.3 in 1965 | 9 | 31.78 in 1948 | 9 | 16.92 in 1954 |
| 10 | 83.6 in 1995 | 10 | 80.4 in 1974 | 10 | 31.59 in 1995 | 10 | 16.95 in 1921 |
| | | | 80.4 in 1968 | ... | | | |
| | | | 80.4 in 1929 | 28 | 27.17 in 2024 | | |

Normal Summer Temp at LLDF1 = 82.8°
 Normal Summer Rain at LLDF1 = 26.62 in.

| Warmest Monthly Avg Temp | | Warmest Monthly Avg Max Temps | | Warmest Monthly Avg Min Temps | |
|-----------------------------|-------------------------|----------------------------------|-------------------------|----------------------------------|-------------------------|
| 1 | 86.0 in Aug 2023 | 1 | 96.5 in Aug 1987 | 1 | 77.4 in Aug 2023 |
| 2 | 85.5 in Jul 2024 | 2 | 96.3 in Jul 1992 | 2 | 76.6 in Jul 2023 |
| | 85.5 in Jul 2023 | 3 | 96.0 in Jun 1998 | 3 | 76.4 in Jul 2024 |
| 4 | 85.1 in Jul 2016 | | 96.0 in Jul 1987 | 4 | 76.3 in Aug 2024 |
| | 85.1 in Aug 1987 | 5 | 95.6 in Aug 1989 | 5 | 76.2 in Aug 2010 |
| 6 | 84.9 in Jul 1992 | 6 | 95.4 in Jul 1993 | 6 | 76.1 in Aug 2021 |
| 7 | 84.8 in Aug 2022 | 7 | 95.0 in Jul 1989 | 7 | 76.0 in Aug 2020 |
| | 84.8 in Jun 2010 | 8 | 94.9 in Jun 2010 | 8 | 75.8 in Aug 2019 |
| | 84.8 in Jul 1987 | | 94.9 in Jun 1985 | | 75.8 in Jul 2016 |
| 10 | 84.7 in Jul 2022 | | 94.9 in Jul 1981 | | 75.8 in Aug 2011 |
| 11 | 84.6 in Aug 2024 | ... | | | |
| | 84.6 in Aug 1995 | 54 | 93.0 in Aug 2024 | | |
| | | | 93.0 in Jul 1985 | | |

WINTER HAVEN AREA (records began in March 1941):

| Warmest August's | | Coolest August's | | Wettest August's | | Driest August's | |
|------------------|---------------------|------------------|--------------|------------------|---------------------|-----------------|--------------|
| 1 | 85.6 in 1989 | 1 | 80.0 in 1972 | 1 | 14.59 in 1949 | 1 | 1.78 in 1960 |
| 2 | 85.5 in 2023 | 2 | 80.4 in 1971 | 2 | 12.76 in 1977 | 2 | 1.88 in 1998 |
| 3 | 85.3 in 2005 | | 80.4 in 1967 | 3 | 12.42 in 2022 | 3 | 2.04 in 1980 |
| 4 | 85.0 in 2020 | 4 | 80.6 in 1957 | 4 | 12.21 in 1952 | 4 | 2.63 in 1942 |
| 5 | 84.9 in 2024 | 5 | 80.8 in 1969 | 5 | 11.94 in 1992 | 5 | 2.80 in 2005 |
| | 84.9 in 2022 | | 80.8 in 1959 | 6 | 11.78 in 1995 | 6 | 3.09 in 1954 |
| | 84.9 in 2019 | 7 | 80.9 in 1968 | 7 | 11.39 in 1981 | 7 | 3.65 in 1970 |
| | 84.9 in 2007 | 8 | 81.0 in 1982 | | 11.39 in 1957 | 8 | 3.73 in 1955 |
| | 84.9 in 1941 | | 81.0 in 1962 | 9 | 11.25 in 1948 | 9 | 3.88 in 2021 |
| 10 | 84.7 in 2011 | 10 | 81.1 in 2008 | 10 | 11.22 in 2011 | 10 | 3.96 in 1945 |
| | | | 81.1 in 1990 | ... | | | |
| | | | | 23 | 8.50 in 2024 | | |

Normal Temp August at GIF = 84.1°
 Normal Rain August at GIF = 6.52 in.

| Warmest Summers | Coollest Summers | Wettest Summers | Driest Summers |
|-----------------------|------------------|-------------------------|-------------------------|
| 1 85.1 in 2024 | 1 79.4 in 1968 | 1 34.98 in 1949 | 1 9.33 in 1999 |
| 2 84.8 in 1989 | 2 79.7 in 1972 | 2 34.87 in 1945 | 2 12.07 in 1980 |
| 3 84.7 in 2022 | 79.7 in 1971 | 3 32.95 in 1992 | 3 12.14 in 1998 |
| 84.7 in 2019 | 4 80.0 in 1974 | 4 32.77 in 1995 | 4 14.37 in 1963 |
| 84.7 in 2010 | 5 80.4 in 1967 | 5 30.66 in 1981 | 5 14.62 in 1997 |
| 84.7 in 1998 | 6 80.7 in 1963 | 6 30.57 in 2015 | 6 14.88 in 1972 |
| 7 84.4 in 2016 | 80.7 in 1962 | 7 30.08 in 1948 | 7 14.98 in 2009 |
| 8 84.3 in 2020 | 8 80.8 in 1965 | 8 29.77 in 1974 | 8 15.10 in 1979 |
| 9 84.0 in 2023 | 9 80.9 in 1959 | 9 29.75 in 2019 | 9 16.02 in 1964 |
| 10 83.7 in 2005 | 10 81.0 in 1966 | 10 28.69 in 1965 | 10 16.27 in 1996 |
| | | ... | ... |
| | | 37 22.39 in 2024 | 42 22.39 in 2024 |

Normal Summer Temp at GIF = 83.8°
Normal Summer Rain at GIF = 21.32 in.

| Warmest Monthly Avg Temp | Warmest Monthly Avg Max Temps | Warmest Monthly Avg Min Temps |
|----------------------------|-------------------------------|-------------------------------|
| 1 86.1 in Jul 2024 | 1 96.2 in Jun 1985 | 1 77.1 in Aug 2019 |
| 2 85.6 in Jul 2022 | 2 95.8 in Jun 1998 | 2 76.8 in Sep 2018 |
| 85.6 in Aug 1989 | 3 95.5 in Jul 2024 | 3 76.7 in Jul 2024 |
| 4 85.5 in Aug 2023 | 95.5 in Aug 1989 | 4 76.6 in Aug 2023 |
| 85.5 in Jul 2016 | 5 95.4 in Jul 1942 | 76.6 in Aug 2020 |
| 6 85.3 in Aug 2005 | 6 95.3 in Aug 1941 | 76.6 in Jul 2005 |
| 7 85.0 in Aug 2020 | 7 95.0 in Jul 2016 | 7 76.5 in Aug 2024 |
| 85.0 in Sep 2018 | 95.0 in Aug 1951 | 76.5 in Aug 2010 |
| 85.0 in Jul 2005 | 9 94.9 in Aug 1942 | 9 76.4 in Jul 2022 |
| 10 84.9 in Aug 2024 | 10 94.8 in Jul 2022 | 76.4 in Aug 2010 |
| 84.9 in Aug 2022 | 94.8 in Aug 1987 | |
| 84.9 in Aug 2019 | ... | |
| 84.9 in Jun 2010 | 48 93.2 in Aug 2024 | |
| 84.9 in Aug 2007 | 93.2 in Sep 2018 | |
| 84.9 in Aug 1941 | 93.2 in Jun 2015 | |
| | 93.2 in Aug 2011 | |
| | 93.2 in Jul 2010 | |
| | 93.2 in Jul 1993 | |
| | 93.2 in Jul 1990 | |
| | 93.2 in Jun 1951 | |
| | 93.2 in Jun 1945 | |

BARTOW (records began in June 1892):

| Warmest August's | | Coolest August's | | Wettest August's | | Driest August's | |
|------------------|---------------------|------------------|--------------|------------------|---------------------|-----------------|---------------------|
| 1 | 87.4 in 2014 | 1 | 79.7 in 1913 | 1 | 14.62 in 1905 | 1 | 1.60 in 2014 |
| 2 | 86.1 in 2013 | 2 | 79.9 in 1894 | 2 | 14.39 in 1949 | 2 | 2.45 in 1912 |
| 3 | 84.6 in 2023 | 3 | 80.3 in 1898 | 3 | 14.38 in 1909 | 3 | 2.60 in 1987 |
| | 84.6 in 1987 | 4 | 80.5 in 1967 | 4 | 13.38 in 2003 | 4 | 2.98 in 1936 |
| | 84.6 in 1951 | 5 | 80.6 in 1975 | | 13.38 in 2002 | 5 | 3.02 in 1950 |
| 6 | 84.4 in 1998 | | 80.6 in 1947 | 6 | 13.01 in 1981 | 6 | 3.18 in 1938 |
| 7 | 84.2 in 2011 | | 80.6 in 1916 | 7 | 12.83 in 1928 | 7 | 3.57 in 1930 |
| 8 | 84.1 in 1941 | 8 | 80.7 in 1911 | 8 | 12.65 in 1992 | 8 | 3.74 in 1996 |
| | 84.1 in 1924 | | 80.7 in 1892 | 9 | 12.57 in 2012 | 9 | 4.08 in 2010 |
| 10 | 83.9 in 2010 | 10 | 80.8 in 1901 | 10 | 12.39 in 1901 | 10 | 4.22 in 2021 |
| | 83.9 in 2005 | | | ... | | ... | |
| | 83.9 in 1999 | | | 38 | 9.43 in 2024 | 94 | 9.43 in 2024 |
| | 83.9 in 1997 | | | | | | |
| ... | | | | | | | |
| 22 | 83.3 in 2024 | | | | | | |
| | 83.3 in 1983 | | | | | | |
| | 83.3 in 1958 | | | | | | |

Normal Temp August at BARF1 = 82.3°
 Normal Rain August at BARF1 = 7.78 in.

| Warmest Summers | | Coolest Summers | | Wettest Summers | | Driest Summers | |
|-----------------|---------------------|-----------------|--------------|-----------------|----------------------|----------------|----------------------|
| 1 | 85.6 in 2014 | 1 | 79.0 in 1894 | 1 | 36.81 in 2003 | 1 | 13.22 in 1964 |
| 2 | 84.8 in 1998 | 2 | 79.4 in 1913 | 2 | 36.13 in 1909 | 2 | 13.28 in 1950 |
| 3 | 84.5 in 2013 | 3 | 79.8 in 1892 | 3 | 35.84 in 2012 | 3 | 14.92 in 1931 |
| 4 | 83.9 in 2010 | 4 | 79.9 in 1947 | 4 | 35.15 in 1924 | 4 | 15.39 in 1996 |
| 5 | 83.7 in 1987 | 5 | 80.3 in 1936 | 5 | 35.01 in 1939 | 5 | 15.47 in 1979 |
| 6 | 83.6 in 2024 | | 80.3 in 1916 | 6 | 34.85 in 1949 | 6 | 15.56 in 1902 |
| 7 | 83.5 in 2023 | 7 | 80.4 in 1976 | 7 | 34.31 in 2005 | 7 | 15.67 in 1987 |
| 8 | 83.3 in 2016 | | 80.4 in 1974 | 8 | 34.14 in 1945 | 8 | 15.97 in 2007 |
| | 83.3 in 1969 | | 80.4 in 1972 | 9 | 33.82 in 1934 | 9 | 16.40 in 2014 |
| 10 | 83.2 in 1981 | | 80.4 in 1935 | 10 | 33.42 in 1928 | 10 | 16.42 in 1936 |
| | 83.2 in 1958 | | | ... | | ... | |
| | | | | 55 | 24.79 in 2024 | 78 | 24.79 in 2024 |

Normal Summer Temp at BARF1 = 81.9°
 Normal Summer Rain at BARF1 = 23.62 in.

| Warmest Monthly Avg Temp | Warmest Monthly Avg Max Temps | Warmest Monthly Avg Min Temps |
|-----------------------------|----------------------------------|----------------------------------|
| 1 87.4 in Aug 2014 | 1 96.8 in Jul 1932 | 1 78.9 in Aug 2014 |
| 2 86.1 in Aug 2013 | 2 96.0 in Jun 1998 | 2 78.0 in Aug 2013 |
| 3 85.9 in Jun 1998 | 3 95.9 in Aug 2014 | 3 77.0 in Jun 2015 |
| 4 85.7 in Jun 2015 | 95.9 in Jun 1927 | 77.0 in Jul 2014 |
| 5 85.4 in Jul 2014 | 5 95.6 in Aug 1924 | 5 76.6 in Jul 2013 |
| 6 84.7 in Jul 1932 | 6 95.4 in Jun 1981 | 6 75.7 in Jun 1998 |
| 7 84.6 in Aug 2023 | 95.4 in Jun 1898 | 75.7 in Aug 1995 |
| 84.6 in Aug 1987 | 8 95.3 in Aug 1951 | 8 75.6 in Sep 2014 |
| 84.6 in Aug 1951 | 9 95.0 in Jun 1950 | 9 75.4 in Aug 1998 |
| 10 84.5 in Jul 1969 | 10 94.9 in Jul 1981 | 10 75.2 in Aug 2023 |
| ... | ... | 75.2 in Aug 2010 |
| 49 83.3 in Aug 2024 | 185 92.2 in Aug 2024 | 75.2 in Aug 1903 |
| 83.3 in Jun 2013 | 92.2 in Jul 2003 | ... |
| 83.3 in Jul 1996 | 92.2 in Jul 1989 | 27 74.5 in Aug 2024 |
| 83.3 in Jul 1993 | 92.2 in Sep 1978 | 74.5 in Jul 2023 |
| 83.3 in Aug 1983 | 92.2 in May 1975 | 74.5 in Aug 2012 |
| 83.3 in Jul 1962 | 92.2 in Aug 1970 | 74.5 in Sep 2002 |
| 83.3 in Aug 1958 | 92.2 in Jun 1931 | 74.5 in Jul 1987 |
| 83.3 in Jul 1957 | 92.2 in Jul 1913 | 74.5 in Jul 1969 |
| 83.3 in Sep 1925 | 92.2 in Jun 1908 | |

SARASOTA-BRADENTON (records began in January 1911):

| Warmest August's | Coolest August's | Wettest August's | Driest August's |
|-----------------------|------------------|------------------|-----------------|
| 1 85.9 in 2023 | 1 79.6 in 1911 | 1 24.42 in 1981 | 1 2.51 in 1938 |
| 2 85.2 in 2020 | 2 79.9 in 1947 | 2 20.97 in 2017 | 2 2.52 in 1930 |
| 3 85.0 in 2014 | 79.9 in 1922 | 3 19.97 in 1959 | 3 3.09 in 1944 |
| 4 84.7 in 2016 | 4 80.0 in 1939 | 4 19.73 in 1949 | 4 3.10 in 1952 |
| 5 84.5 in 2011 | 5 80.3 in 1967 | 5 19.35 in 1922 | 5 3.11 in 2001 |
| 6 84.2 in 2007 | 80.3 in 1931 | 6 18.14 in 1928 | 6 3.20 in 1996 |
| 7 83.9 in 1995 | 80.3 in 1927 | 7 17.79 in 2003 | 7 3.91 in 2008 |
| 8 83.8 in 2005 | 8 80.4 in 1930 | 8 17.63 in 1999 | 8 3.93 in 1963 |
| 9 83.7 in 2024 | 80.4 in 1916 | 9 17.04 in 1939 | 9 3.96 in 1984 |
| 83.7 in 1990 | 10 80.5 in 1934 | 10 15.92 in 1962 | 10 3.97 in 2014 |
| 83.7 in 1987 | 80.5 in 1929 | | |

Normal Temp August at SRQ = 83.4°

Total Rainfall for August 2024 = *23.55 in.

Normal Rain August at SRQ = 9.11 in.

* Rainfall was missing on August 5th due to equipment failure. Radar estimates and local rain gauges indicate that 3 to 4 inches of rain fell on this day which would make this the Wettest August on record.

| Warmest Summers | | Coolest Summers | | Wettest Summers | | Driest Summers | |
|-----------------|---------------------|-----------------|--------------|-----------------|-----------------------|----------------|---------------|
| 1 | 85.0 in 2023 | 1 | 78.9 in 1947 | 1 | *47.32 in 2024 | 1 | 11.09 in 1930 |
| 2 | 84.6 in 2020 | | 78.9 in 1913 | 2 | 45.69 in 1943 | 2 | 11.20 in 1998 |
| 3 | 84.5 in 2016 | 3 | 79.4 in 1911 | 3 | 41.23 in 2017 | 3 | 11.94 in 1944 |
| 4 | 83.9 in 1998 | 4 | 79.5 in 1930 | 4 | 41.08 in 1912 | 4 | 12.48 in 1951 |
| 5 | 83.7 in 2024 | 5 | 79.7 in 1976 | 5 | 39.63 in 1992 | 5 | 12.60 in 2023 |
| 6 | 83.6 in 2014 | | 79.7 in 1916 | 6 | 38.29 in 1922 | 6 | 12.75 in 1952 |
| 7 | 83.4 in 2010 | 7 | 79.8 in 1929 | 7 | 38.23 in 1945 | 7 | 13.10 in 2014 |
| 8 | 83.2 in 2019 | 8 | 79.9 in 1974 | 8 | 37.73 in 1939 | 8 | 13.12 in 1948 |
| 9 | 83.0 in 2011 | | 79.9 in 1931 | 9 | 35.21 in 1959 | 9 | 14.67 in 2009 |
| 10 | 82.9 in 2022 | 10 | 80.0 in 1922 | 10 | 35.12 in 1981 | 10 | 14.80 in 1914 |
| | 82.9 in 2021 | | | | | | |

Normal Summer Temp at SRQ = 82.8°
Normal Summer Rain at SRQ = 23.55 in.

** Rainfall was missing on August 5th due to equipment failure. Radar estimates and local rain gauges indicate that 3 to 4 inches of rain fell on this day which would increase the Summer rainfall to over 50 inches.*

| Warmest Monthly Avg Temp | | Warmest Monthly Avg Max Temps | | Warmest Monthly Avg Min Temps | |
|--------------------------|-------------------------|-------------------------------|-------------------------|-------------------------------|-------------------------|
| 1 | 86.2 in Jul 2023 | 1 | 94.5 in Jun 1998 | 1 | 78.8 in Jul 2023 |
| 2 | 85.9 in Aug 2023 | 2 | 94.2 in Jul 1998 | | 78.8 in Jul 2020 |
| 3 | 85.8 in Jul 2020 | 3 | 94.1 in Aug 1998 | 3 | 78.0 in Aug 2023 |
| 4 | 85.4 in Jul 2016 | 4 | 94.0 in Aug 1938 | 4 | 77.8 in Aug 2011 |
| 5 | 85.2 in Aug 2020 | 5 | 93.8 in Aug 2023 | 5 | 77.5 in Aug 2020 |
| 6 | 85.0 in Aug 2014 | | 93.8 in Jul 2016 | 6 | 77.2 in Jul 2024 |
| 7 | 84.8 in Sep 2019 | 7 | 93.7 in Aug 1990 | 7 | 77.1 in Jul 2016 |
| 8 | 84.7 in Aug 2016 | 8 | 93.6 in Jul 2023 | 8 | 76.9 in Aug 2019 |
| 9 | 84.5 in Aug 2011 | | 93.6 in Aug 1989 | | 76.9 in Aug 2016 |
| 10 | 84.3 in Jul 2024 | 10 | 93.5 in Aug 2014 | 10 | 76.8 in Aug 2024 |
| 11 | 84.2 in Aug 2007 | ... | | | |
| | 84.2 in Jul 1998 | 174 | 90.6 in Aug 2024 | | |
| 13 | 84.0 in Jul 1962 | | 90.6 in Jul 2010 | | |
| 14 | 83.9 in Sep 2016 | | 90.6 in Jul 2007 | | |
| | 83.9 in Jul 2014 | | 90.6 in Aug 1976 | | |
| | 83.9 in Jun 1998 | | 90.6 in Jul 1960 | | |
| | 83.9 in Aug 1995 | | 90.6 in Sep 1954 | | |
| 18 | 83.8 in Aug 2005 | | 90.6 in Jun 1952 | | |
| 19 | 83.7 in Aug 2024 | | 90.6 in Aug 1946 | | |
| | 83.7 in Aug 1990 | | 90.6 in Jun 1938 | | |
| | 83.7 in Aug 1987 | | 90.6 in Jun 1937 | | |
| | | | 90.6 in Aug 1930 | | |

VENICE (records began in May 1955):

| Warmest August's | | Coolest August's | | Wettest August's | | Driest August's | |
|------------------|---------------------|------------------|--------------|------------------|----------------------|-----------------|--------------|
| 1 | 86.1 in 2023 | 1 | 80.5 in 1975 | 1 | 21.96 in 2024 | 1 | 2.96 in 2007 |
| 2 | 86.0 in 2010 | | 80.5 in 1967 | 2 | 20.18 in 2017 | 2 | 3.00 in 2005 |
| 3 | 85.4 in 2011 | 3 | 80.6 in 1968 | 3 | 16.77 in 1981 | 3 | 3.04 in 1955 |
| | 85.4 in 2009 | 4 | 80.9 in 1976 | 4 | 16.47 in 1967 | 4 | 3.10 in 2014 |
| 5 | 85.1 in 2024 | 5 | 81.0 in 1959 | 5 | 15.76 in 1999 | 5 | 3.21 in 1997 |
| 6 | 84.8 in 2012 | 6 | 81.1 in 1969 | 6 | 13.69 in 1974 | 6 | 3.25 in 1990 |
| 7 | 84.7 in 1998 | 7 | 81.2 in 1974 | 7 | 13.41 in 1971 | 7 | 3.28 in 1958 |
| 8 | 84.5 in 1988 | | 81.2 in 1957 | 8 | 13.11 in 1970 | 8 | 3.49 in 1984 |
| 9 | 84.4 in 2019 | 9 | 81.4 in 1958 | 9 | 12.94 in 2016 | 9 | 3.51 in 1956 |
| 10 | 84.2 in 1997 | 10 | 81.5 in 1977 | 10 | 12.56 in 1959 | 10 | 4.06 in 1963 |

Normal Temp August at VNCF1 = 83.1°
Normal Rain August at VNCF1 = 8.34 in.

| Warmest Summers | | Coolest Summers | | Wettest Summers | | Driest Summers | |
|-----------------|---------------------|-----------------|--------------|-----------------|----------------------|----------------|---------------|
| 1 | 86.2 in 2010 | 1 | 80.3 in 1975 | 1 | 38.01 in 1995 | 1 | 11.65 in 2014 |
| 2 | 85.2 in 2023 | 2 | 80.4 in 1974 | 2 | 37.89 in 2017 | 2 | 12.14 in 1990 |
| 3 | 85.1 in 1998 | 3 | 80.5 in 1967 | 3 | 37.79 in 1992 | 3 | 12.88 in 1997 |
| 4 | 84.9 in 2024 | 4 | 80.7 in 1984 | 4 | 37.69 in 2024 | 4 | 13.54 in 1956 |
| 5 | 84.7 in 2011 | | 80.7 in 1966 | 5 | 36.76 in 1974 | 5 | 13.56 in 1979 |
| 6 | 84.0 in 2019 | 6 | 80.8 in 1956 | 6 | 36.72 in 2003 | 6 | 13.72 in 2007 |
| 7 | 83.9 in 2012 | 7 | 80.9 in 1978 | 7 | 32.82 in 1999 | 7 | 13.77 in 1955 |
| 8 | 83.8 in 2020 | 8 | 81.0 in 2008 | 8 | 32.69 in 2012 | 8 | 14.13 in 2009 |
| 9 | 83.5 in 1997 | | 81.0 in 1972 | 9 | 30.31 in 2005 | 9 | 14.26 in 1985 |
| 10 | 83.3 in 2022 | | 81.0 in 1959 | 10 | 29.35 in 1987 | | 14.26 in 1980 |
| | 83.3 in 2013 | | | | | | |
| | 83.3 in 2004 | | | | | | |
| | 83.3 in 1993 | | | | | | |

Normal Summer Temp at VNCF1 = 82.5°
Normal Summer Rain at VNCF1 = 23.54 in.

| Warmest Monthly Avg Temp | Warmest Monthly Avg Max Temps | Warmest Monthly Avg Min Temps |
|-----------------------------|----------------------------------|----------------------------------|
| 1 88.1 in Sep 1988 | 1 95.5 in Sep 1988 | 1 80.5 in Sep 1988 |
| 2 86.6 in Jul 1989 | 2 95.4 in Jun 2010 | 2 79.7 in Jul 1989 |
| 3 86.4 in Jun 2010 | 3 95.3 in Jun 1998 | 3 78.8 in Aug 2010 |
| 4 86.3 in Jul 2023 | 4 95.1 in Jun 2004 | 4 78.6 in Sep 1989 |
| 5 86.2 in Jul 2010 | 5 94.9 in Aug 2023 | 5 78.5 in Jul 2010 |
| 6 86.1 in Aug 2023 | 6 94.8 in Aug 1998 | 6 78.1 in Jul 2023 |
| 7 86.0 in Aug 2010 | 7 94.5 in Jul 2023 | 78.1 in Aug 2011 |
| 8 85.7 in Jun 1998 | 8 94.2 in Jul 1998 | 8 77.7 in Aug 2024 |
| 9 85.4 in Aug 2011 | 9 93.9 in Jul 1997 | 9 77.5 in Jul 2024 |
| 85.4 in Aug 2009 | 10 93.8 in Jul 2010 | 10 77.3 in Aug 2023 |
| 85.4 in Sep 1989 | 93.8 in Aug 2009 | 77.3 in Jun 2010 |
| 12 85.3 in Jul 2024 | 93.8 in Aug 1997 | |
| 13 85.1 in Aug 2024 | 93.8 in Jul 1996 | |
| | 93.8 in Jul 1993 | |
| | ... | |
| | 33 92.5 in Aug 2024 | |
| | 92.5 in Aug 2020 | |
| | 92.5 in Jul 2012 | |
| | 92.5 in Sep 2009 | |
| | 92.5 in Aug 2005 | |

MYAKKA RIVER STATE PARK (Temperature records began in March 1956
and Rainfall records began in Sep 1943):

| Warmest August's | Coolest August's | Wettest August's | Driest August's |
|------------------------|------------------|------------------------|-----------------|
| 1 86.7 in 1993 | 1 80.4 in 1962 | 1 19.85 in 1981 | 1 2.81 in 2005 |
| 2 85.0 in 1998 | 2 80.5 in 1959 | 2 18.61 in 1971 | 2 3.44 in 1991 |
| 3 84.8 in 2017 | 80.5 in 1957 | 3 18.45 in 2003 | 3 3.94 in 2001 |
| 4 84.3 in 2005 | 4 80.9 in 2002 | 4 17.90 in 2024 | 4 5.05 in 1974 |
| 84.3 in 1999 | 80.9 in 1972 | 5 17.18 in 2016 | 5 5.11 in 2022 |
| 6 84.1 in 2011 | 80.9 in 1971 | 6 16.85 in 2018 | 6 5.17 in 1976 |
| 7 84.0 in 2019 | 7 81.1 in 1985 | 7 16.60 in 1949 | 7 5.32 in 1996 |
| 84.0 in 2016 | 8 81.3 in 2001 | 8 15.99 in 1980 | 8 5.33 in 1944 |
| 84.0 in 2010 | 81.3 in 1969 | 9 15.66 in 1999 | 9 5.35 in 1956 |
| 10 83.9 in 1997 | 81.3 in 1963 | 10 15.62 in 1988 | 10 5.48 in 1948 |
| 11 83.8 in 2015 | | | |
| 12 83.6 in 2023 | | | |
| 13 83.4 in 2014 | | | |
| 83.4 in 2013 | | | |
| 83.4 in 1991 | | | |
| 16 83.3 in 2024 | | | |

Normal Temp August at MKCF1 = 83.1°
Normal Rain August at MKCF1 = 10.12 in.

| Warmest Summers | | | Coolest Summers | | | Wettest Summers | | | Driest Summers | | |
|-----------------|-------------|----------------|-----------------|------|---------|-----------------|--------------|----------------|----------------|-------|---------|
| 1 | 85.0 | in 1998 | 1 | 79.8 | in 1962 | 1 | 47.18 | in 2003 | 1 | 13.38 | in 1956 |
| 2 | 84.0 | in 2010 | 2 | 80.1 | in 1959 | 2 | 46.76 | in 2017 | 2 | 16.52 | in 1996 |
| 3 | 83.5 | in 2017 | 3 | 80.3 | in 1984 | 3 | 46.32 | in 1995 | 3 | 17.03 | in 1948 |
| 4 | 83.4 | in 2016 | | 80.3 | in 1974 | 4 | 43.79 | in 1981 | 4 | 17.41 | in 1961 |
| 5 | 83.3 | in 2019 | 5 | 80.5 | in 1972 | 5 | 41.67 | in 1965 | 5 | 17.42 | in 2009 |
| | 83.3 | in 1999 | | 80.5 | in 1963 | 6 | 40.81 | in 2012 | 6 | 18.65 | in 1952 |
| 7 | 83.2 | in 2018 | 7 | 80.6 | in 2002 | 7 | 40.58 | in 1982 | 7 | 19.68 | in 1944 |
| | 83.2 | in 1993 | | 80.6 | in 1986 | 8 | 40.14 | in 1992 | 8 | 20.18 | in 1986 |
| 9 | 83.1 | in 2005 | | 80.6 | in 1971 | 9 | 38.00 | in 2024 | 9 | 20.32 | in 1954 |
| | 83.1 | in 1997 | | 80.6 | in 1960 | 10 | 37.94 | in 1968 | 10 | 20.37 | in 1964 |
| 11 | 83.0 | in 2024 | | | | | | | | | |
| | 83.0 | in 2011 | | | | | | | | | |

Normal Summer Temp at MKCF1 = 82.3°
Normal Summer Rain at MKCF1 = 29.88 in.

| Warmest Monthly Avg Temp | | Warmest Monthly Avg Max Temps | | Warmest Monthly Avg Min Temps | |
|--------------------------|-------------------------|-------------------------------|-------------------------|-------------------------------|-------------------------|
| 1 | 86.7 in Aug 1993 | 1 | 97.1 in Jun 1998 | 1 | 77.5 in Aug 1993 |
| 2 | 85.2 in Jun 1998 | 2 | 96.3 in Aug 1998 | 2 | 75.7 in Aug 2024 |
| 3 | 85.0 in Aug 1998 | 3 | 95.8 in Aug 1993 | 3 | 75.6 in Aug 2019 |
| | 85.0 in Jul 1998 | 4 | 95.7 in Jun 2010 | | 75.6 in Sep 1993 |
| 5 | 84.8 in Aug 2017 | 5 | 95.6 in Jul 1998 | 5 | 75.3 in Aug 2017 |
| 6 | 84.4 in Jun 2010 | | 95.6 in Jul 1996 | | 75.3 in Aug 2010 |
| 7 | 84.3 in Aug 2005 | | 95.6 in Jun 1985 | 7 | 75.2 in Jul 2005 |
| | 84.3 in Aug 1999 | 8 | 95.4 in Jul 1993 | 8 | 75.0 in Jul 2024 |
| 9 | 84.2 in Jul 2016 | 9 | 95.2 in Aug 1999 | 9 | 74.9 in Jul 2017 |
| 10 | 84.1 in Aug 2011 | | 95.2 in Sep 1991 | | 74.9 in Aug 2016 |
| | 84.1 in Jul 2005 | ... | | | |
| ... | | 192 | 90.9 in Aug 2024 | | |
| 29 | 83.3 in Aug 2024 | | 90.9 in Aug 2021 | | |
| | | | 90.9 in Jun 1984 | | |
| | | | 90.9 in Jun 1978 | | |
| | | | 90.9 in Jun 1970 | | |
| | | | 90.9 in May 1968 | | |
| | | | 90.9 in Jun 1961 | | |

WAUCHULA 2 N (records began in January 1933):

| Warmest August's | | Coolest August's | | Wettest August's | | Driest August's | |
|------------------|---------------------|------------------|--------------|------------------|---------------------|-----------------|--------------|
| 1 | 85.4 in 2009 | 1 | 77.7 in 1950 | 1 | 15.53 in 1949 | 1 | 2.66 in 1982 |
| 2 | 85.2 in 2007 | 2 | 80.1 in 1953 | 2 | 14.17 in 2010 | 2 | 2.97 in 1938 |
| 3 | 84.3 in 2023 | 3 | 80.3 in 2000 | 3 | 14.04 in 2015 | 3 | 3.30 in 1958 |
| 4 | 84.2 in 1941 | 4 | 80.4 in 1939 | 4 | 13.68 in 1939 | 4 | 3.67 in 2005 |
| 5 | 83.6 in 2024 | 5 | 80.5 in 1967 | 5 | 12.76 in 1992 | 5 | 3.75 in 1957 |
| | 83.6 in 1993 | 6 | 80.7 in 2003 | 6 | 12.54 in 1943 | 6 | 4.17 in 1965 |
| 7 | 83.5 in 1989 | | 80.7 in 1996 | 7 | 12.46 in 1953 | 7 | 4.24 in 1970 |
| | 83.5 in 1987 | | 80.7 in 1949 | 8 | 12.28 in 2003 | 8 | 4.48 in 2009 |
| 9 | 83.4 in 2005 | 9 | 80.8 in 1959 | 9 | 12.11 in 1956 | 9 | 4.52 in 1933 |
| 10 | 83.3 in 2016 | | 80.8 in 1947 | 10 | 11.45 in 2016 | 10 | 4.59 in 1941 |
| | 83.3 in 1983 | | | ... | | | |
| | | | | 19 | 9.98 in 2024 | | |

Normal Temp August at WAUF1 = 82.3°
 Normal Rain August at WAUF1 = 8.46 in.

| Warmest Summers | | Coolest Summers | | Wettest Summers | | Driest Summers | |
|-----------------|---------------------|-----------------|--------------|-----------------|----------------------|----------------|----------------------|
| 1 | 84.6 in 2009 | 1 | 78.3 in 1950 | 1 | 43.85 in 1939 | 1 | 14.24 in 1999 |
| 2 | 83.5 in 2024 | 2 | 79.9 in 2012 | 2 | 39.39 in 1943 | 2 | 14.30 in 1964 |
| 3 | 83.2 in 2008 | | 79.9 in 1955 | 3 | 38.22 in 1949 | 3 | 14.60 in 2000 |
| | 83.2 in 1993 | 4 | 80.0 in 1947 | 4 | 37.38 in 1953 | 4 | 14.65 in 1958 |
| 5 | 82.9 in 1998 | 5 | 80.1 in 1996 | 5 | 35.80 in 2017 | 5 | 15.13 in 1952 |
| | 82.9 in 1987 | | 80.1 in 1956 | 6 | 34.17 in 1959 | 6 | 16.05 in 1998 |
| 7 | 82.7 in 2016 | 7 | 80.2 in 2013 | 7 | 34.14 in 1945 | 7 | 16.30 in 2018 |
| | 82.7 in 2007 | | 80.2 in 2000 | 8 | 32.94 in 1974 | 8 | 16.51 in 1996 |
| 9 | 82.6 in 1942 | | 80.2 in 1953 | 9 | 32.53 in 1968 | 9 | 16.97 in 1957 |
| 10 | 82.5 in 1969 | | 80.3 in 1976 | 10 | 30.58 in 2013 | 10 | 17.21 in 1981 |
| | | | 80.3 in 1965 | ... | | ... | |
| | | | | 45 | 24.46 in 2024 | 43 | 24.46 in 2024 |

Normal Summer Temp at WAUF1 = 81.6°
 Normal Summer Rain at WAUF1 = 24.61 in.

| Warmest Monthly Avg Temp | Warmest Monthly Avg Max Temps | Warmest Monthly Avg Min Temps |
|-----------------------------|----------------------------------|----------------------------------|
| 1 85.4 in Aug 2009 | 1 95.0 in Aug 2007 | 1 76.7 in Aug 2009 |
| 2 85.2 in Aug 2007 | 95.0 in Aug 1989 | 2 76.0 in Sep 2009 |
| 3 84.5 in Sep 2009 | 3 94.8 in Jun 1998 | 3 75.6 in Jul 2009 |
| 84.5 in Jul 2009 | 4 94.7 in May 2024 | 4 75.4 in Aug 2007 |
| 5 84.3 in Jul 2024 | 94.7 in Aug 2023 | 5 75.1 in Aug 2008 |
| 84.3 in Aug 2023 | 6 94.6 in Jul 1981 | 6 74.9 in Sep 2008 |
| 7 84.2 in Aug 1941 | 7 94.5 in Jul 2024 | 7 74.5 in Jul 2008 |
| 8 83.9 in Jun 2009 | 94.5 in Aug 1987 | 8 74.3 in Aug 2024 |
| 83.9 in Jul 1992 | 94.5 in Jul 1942 | 9 74.2 in Jul 2024 |
| 10 83.8 in Jul 1942 | 94.5 in Aug 1941 | 74.2 in Jun 2009 |
| 11 83.6 in Aug 2024 | ... | |
| 83.6 in Jul 2007 | 64 92.8 in Aug 2024 | |
| 83.6 in Aug 1993 | 92.8 in Aug 2020 | |
| | 92.8 in Jul 2017 | |
| | 92.8 in Jun 2015 | |
| | 92.8 in Aug 1991 | |
| | 92.8 in Aug 1979 | |
| | 92.8 in Jun 1979 | |
| | 92.8 in Jun 1958 | |
| | 92.8 in Jul 1940 | |

ARCHBOLD BIO STN (records began in January 1969):

| Warmest August's | Coolest August's | Wettest August's | Driest August's |
|-----------------------|------------------|------------------------|------------------------|
| 1 83.9 in 2023 | 1 79.7 in 1994 | 1 20.05 in 2006 | 1 1.94 in 2000 |
| 2 83.6 in 2016 | 2 79.9 in 1971 | 2 17.88 in 2004 | 2 2.71 in 1984 |
| 3 83.4 in 2020 | 3 80.0 in 1984 | 3 14.31 in 1999 | 3 2.75 in 2009 |
| 4 83.3 in 2010 | 4 80.1 in 1974 | 4 13.70 in 2010 | 4 3.14 in 2007 |
| 5 83.1 in 2024 | 5 80.2 in 1973 | 5 12.76 in 1979 | 5 3.50 in 1987 |
| 83.1 in 2022 | 6 80.3 in 1976 | 6 12.33 in 2008 | 6 4.24 in 1970 |
| 7 82.9 in 2017 | 80.3 in 1972 | 7 12.12 in 1992 | 7 4.28 in 1993 |
| 8 82.8 in 2014 | 8 80.4 in 2003 | 8 11.55 in 2023 | 8 4.40 in 1997 |
| 9 82.7 in 2015 | 80.4 in 2000 | 9 11.35 in 2015 | 9 4.50 in 2020 |
| 82.7 in 2011 | 10 80.6 in 2002 | 10 11.22 in 2012 | 10 4.55 in 2014 |
| | | ... | ... |
| | | 33 7.27 in 2024 | 24 7.27 in 2024 |

Normal Temp August at ACHF1 = 82.1°
Normal Rain August at ACHF1 = 8.49 in.

| Warmest Summers | | Coolest Summers | | Wettest Summers | | Driest Summers | |
|-----------------|---------------------|-----------------|--------------|-----------------|----------------------|----------------|----------------------|
| 1 | 83.3 in 2010 | 1 | 78.8 in 1984 | 1 | 41.24 in 1974 | 1 | 10.76 in 2000 |
| 2 | 82.9 in 2016 | 2 | 79.3 in 1976 | 2 | 40.51 in 2002 | 2 | 11.29 in 1987 |
| 3 | 82.8 in 2024 | | 79.3 in 1974 | 3 | 39.46 in 2013 | 3 | 13.75 in 1980 |
| 4 | 82.6 in 2023 | 4 | 79.4 in 1971 | 4 | 34.39 in 2023 | 4 | 14.20 in 1998 |
| 5 | 82.5 in 2017 | 5 | 79.8 in 1973 | 5 | 34.04 in 2006 | 5 | 17.45 in 1997 |
| 6 | 82.2 in 2022 | | 79.8 in 1972 | 6 | 34.02 in 2008 | 6 | 18.50 in 2009 |
| 7 | 82.1 in 2020 | 7 | 79.9 in 2008 | 7 | 33.94 in 2001 | 7 | 18.57 in 2007 |
| | 82.1 in 1998 | | 79.9 in 1994 | 8 | 33.72 in 2004 | 8 | 19.23 in 1985 |
| 9 | 82.0 in 2015 | 9 | 80.0 in 2002 | 9 | 32.56 in 1992 | 9 | 19.49 in 1983 |
| 10 | 81.9 in 2019 | | 80.0 in 1970 | 10 | 31.74 in 1986 | 10 | 19.78 in 1972 |
| | | | | ... | | ... | |
| | | | | 25 | 24.71 in 2024 | 32 | 24.71 in 2024 |

Normal Summer Temp at ACHF1 = 81.4°
Normal Summer Rain at ACHF1 = 25.68 in.

| Warmest Monthly Avg Temp | | Warmest Monthly Avg Max Temps | | Warmest Monthly Avg Min Temps | |
|--------------------------|-------------------------|-------------------------------|-------------------------|-------------------------------|-------------------------|
| 1 | 83.9 in Aug 2023 | 1 | 96.4 in Jun 1998 | 1 | 73.5 in Aug 2024 |
| 2 | 83.6 in Aug 2016 | 2 | 96.1 in Jun 2010 | | 73.5 in Aug 2023 |
| 3 | 83.5 in Jul 2024 | 3 | 95.5 in Jul 2016 | 3 | 73.1 in Aug 2010 |
| | 83.5 in Jul 2016 | 4 | 95.4 in Aug 2022 | 4 | 73.0 in Aug 2016 |
| | 83.5 in Jun 2010 | | 95.4 in Jul 1981 | 5 | 72.7 in Jul 2024 |
| 6 | 83.4 in Jul 2023 | 6 | 95.2 in Jul 1998 | 6 | 72.3 in Jul 2023 |
| | 83.4 in Aug 2020 | 7 | 95.1 in Jul 2022 | 7 | 72.2 in Aug 2019 |
| 8 | 83.3 in Jul 2022 | 8 | 95.0 in May 2024 | 8 | 72.1 in Sep 2004 |
| | 83.3 in Aug 2010 | 9 | 94.9 in Aug 2014 | 9 | 72.0 in Aug 2020 |
| 10 | 83.2 in Jul 2010 | | 94.9 in Aug 1987 | | 72.0 in Aug 2017 |
| 11 | 83.1 in Aug 2024 | ... | | | 72.0 in Jul 2010 |
| | 83.1 in Aug 2022 | 87 | 92.7 in Aug 2024 | | |
| | | | 92.7 in Sep 2016 | | |
| | | | 92.7 in Jun 2008 | | |
| | | | 92.7 in Aug 1994 | | |
| | | | 92.7 in Sep 1987 | | |
| | | | 92.7 in Jul 1986 | | |

PUNTA GORDA AREA (records began in May 1914):

| Warmest August's | | Coolest August's | | Wettest August's | | Driest August's | |
|------------------|---------------------|------------------|--------------|------------------|----------------------|-----------------|--------------|
| 1 | 86.3 in 2023 | 1 | 79.8 in 1939 | 1 | 19.56 in 1928 | 1 | 1.86 in 1927 |
| 2 | 86.0 in 2024 | 2 | 80.3 in 1922 | 2 | 15.60 in 1995 | 2 | 2.07 in 1938 |
| 3 | 85.1 in 1951 | 3 | 80.6 in 1969 | 3 | 14.01 in 1922 | 3 | 2.78 in 1936 |
| 4 | 84.7 in 2014 | 4 | 80.8 in 1949 | 4 | 13.75 in 2009 | 4 | 3.36 in 1976 |
| 5 | 84.5 in 2020 | 5 | 80.9 in 1967 | 5 | 13.47 in 2017 | 5 | 3.41 in 1997 |
| | 84.5 in 1987 | | 80.9 in 1930 | 6 | 13.42 in 1949 | 6 | 3.50 in 1984 |
| 7 | 84.4 in 2011 | 7 | 81.0 in 1955 | 7 | 13.03 in 1959 | 7 | 3.55 in 1952 |
| 8 | 84.3 in 2005 | | 81.0 in 1929 | 8 | 12.75 in 2024 | 8 | 3.82 in 1978 |
| 9 | 84.2 in 2018 | | 81.0 in 1928 | 9 | 12.45 in 1967 | 9 | 3.93 in 1955 |
| | 84.2 in 2007 | | 81.0 in 1926 | 10 | 12.37 in 2018 | 10 | 4.02 in 1943 |
| | | | | | | | 4.02 in 1921 |

Normal Temp August at PGD = 83.5°
 Normal Rain August at PGD = 9.11 in.

| Warmest Summers | | Coolest Summers | | Wettest Summers | | Driest Summers | |
|-----------------|---------------------|-----------------|--------------|-----------------|----------------------|----------------|----------------------|
| 1 | 85.7 in 2024 | 1 | 79.8 in 1929 | 1 | 47.45 in 1943 | 1 | 9.88 in 1921 |
| 2 | 84.7 in 2023 | 2 | 80.3 in 1939 | 2 | 43.12 in 2017 | 2 | 13.96 in 1932 |
| 3 | 84.2 in 2020 | 3 | 80.4 in 1955 | 3 | 41.80 in 1912 | 3 | 14.17 in 1920 |
| 4 | 84.0 in 2018 | | 80.4 in 1949 | 4 | 38.16 in 1992 | 4 | 14.88 in 1927 |
| 5 | 83.9 in 1951 | 5 | 80.5 in 1971 | 5 | 37.93 in 1922 | 5 | 15.05 in 1955 |
| 6 | 83.7 in 2010 | | 80.5 in 1938 | 6 | 37.24 in 1945 | 6 | 15.12 in 1979 |
| 7 | 83.6 in 2016 | 7 | 80.6 in 1930 | 7 | 34.55 in 2021 | 7 | 15.24 in 1956 |
| 8 | 83.5 in 1980 | | 80.6 in 1925 | 8 | 33.90 in 1939 | 8 | 15.43 in 1952 |
| 9 | 83.4 in 2022 | | 80.6 in 1922 | 9 | 33.81 in 1959 | 9 | 15.75 in 1990 |
| | 83.4 in 2014 | 10 | 80.8 in 1974 | 10 | 33.24 in 1981 | 10 | 15.94 in 2007 |
| | 83.4 in 2011 | | 80.8 in 1967 | ... | | ... | |
| | | | 80.8 in 1928 | 32 | 26.68 in 2024 | 74 | 26.68 in 2024 |

Normal Summer Temp at PGD = 82.8°
 Normal Summer Rain at PGD = 26.41 in.

| Warmest Monthly Avg Temp | Warmest Monthly Avg Max Temps | Warmest Monthly Avg Min Temps |
|-----------------------------|----------------------------------|----------------------------------|
| 1 86.7 in Jul 2024 | 1 95.8 in Jul 2024 | 1 78.1 in Aug 2024 |
| 2 86.3 in Aug 2023 | 2 95.5 in Jul 2023 | 2 77.6 in Jul 2024 |
| 3 86.0 in Aug 2024 | 3 95.3 in Aug 2023 | 3 77.2 in Aug 2023 |
| 4 85.8 in Jul 2023 | 4 94.9 in May 2024 | 4 76.5 in Aug 2011 |
| 5 85.1 in Aug 1951 | 94.9 in Aug 1952 | 5 76.1 in Jul 2023 |
| 6 84.7 in Jul 2020 | 6 94.5 in Aug 1951 | 6 76.0 in Aug 2010 |
| 84.7 in Aug 2014 | 7 94.4 in Jun 2010 | 76.0 in Aug 2008 |
| 8 84.6 in Sep 2018 | 94.4 in Jun 1981 | 8 75.9 in Aug 2020 |
| 9 84.5 in Aug 2024 | 94.4 in Sep 1952 | 75.9 in Sep 2018 |
| 84.5 in Aug 2020 | 10 94.2 in Jul 1981 | 75.9 in Jul 2005 |
| 84.5 in Aug 1987 | 94.2 in Jul 1963 | |
| | ... | |
| | 19 93.8 in Aug 2024 | |
| | 93.8 in Jun 2024 | |
| | 93.8 in Jun 1980 | |
| | 93.8 in Jul 1979 | |

FORT MYERS AREA (records began in January 1902):

| Warmest August's | Coolest August's | Wettest August's | Driest August's |
|-----------------------|------------------|-------------------------|-----------------|
| 1 85.9 in 2023 | 1 79.6 in 1906 | 1 17.64 in 1932 | 1 3.12 in 1919 |
| 2 85.2 in 2022 | 79.6 in 1904 | 2 16.95 in 2017 | 2 3.14 in 1927 |
| 3 84.8 in 2024 | 3 79.7 in 1910 | 3 16.82 in 2004 | 3 3.55 in 1934 |
| 84.8 in 1987 | 4 79.8 in 1908 | 4 16.80 in 2003 | 4 3.97 in 1902 |
| 5 84.4 in 2014 | 5 80.0 in 1913 | 5 16.73 in 1981 | 5 3.98 in 1963 |
| 84.4 in 2005 | 6 80.4 in 1911 | 6 16.22 in 1972 | 6 4.07 in 1996 |
| 84.4 in 1985 | 80.4 in 1909 | 7 15.86 in 1967 | 7 4.12 in 1958 |
| 8 84.3 in 1995 | 8 80.5 in 1917 | 8 14.97 in 1990 | 8 4.26 in 1964 |
| 84.3 in 1981 | 9 80.6 in 1922 | 9 14.81 in 1926 | 9 4.29 in 1955 |
| 84.3 in 1979 | 80.6 in 1907 | 10 14.79 in 1979 | 10 4.32 in 1953 |
| | | ... | 4.32 in 1924 |
| | | 19 12.20 in 2024 | |

Normal Temp August at FMY = 83.4°
 Normal Rain August at FMY = 10.43 in.

| Warmest Summers | | Coolest Summers | | Wettest Summers | | Driest Summers | |
|-----------------|---------------------|-----------------|--------------|-----------------|----------------------|----------------|---------------|
| 1 | 85.3 in 1981 | 1 | 79.1 in 1904 | 1 | 43.87 in 2024 | 1 | 11.12 in 1964 |
| 2 | 85.2 in 2023 | 2 | 79.2 in 1910 | 2 | 42.27 in 1974 | 2 | 14.71 in 1944 |
| 3 | 84.6 in 2010 | 3 | 79.7 in 1908 | 3 | 42.24 in 2004 | 3 | 15.74 in 1963 |
| 4 | 84.5 in 2024 | 4 | 79.8 in 1906 | 4 | 41.55 in 1912 | 4 | 16.67 in 1956 |
| | 84.5 in 2022 | 5 | 80.0 in 1913 | 5 | 40.57 in 2017 | 5 | 17.03 in 1970 |
| 6 | 84.2 in 1979 | 6 | 80.1 in 1917 | 6 | 40.01 in 1995 | 6 | 17.20 in 1902 |
| 7 | 84.0 in 1998 | 7 | 80.2 in 1903 | 7 | 38.76 in 2005 | 7 | 17.56 in 1931 |
| 8 | 83.9 in 1987 | | 80.2 in 1907 | 8 | 37.58 in 2006 | 8 | 17.60 in 1950 |
| | 83.9 in 1980 | | 80.2 in 1909 | 9 | 36.90 in 1982 | 9 | 17.80 in 1980 |
| 10 | 83.7 in 2021 | 10 | 80.4 in 1918 | 10 | 36.89 in 1943 | 10 | 17.90 in 2014 |
| | 83.7 in 2016 | | | | | | |

Normal Summer Temp at FMY = 83.0°
Normal Summer Rain at FMY = 29.47 in.

| Warmest Monthly Avg Temp | | Warmest Monthly Avg Max Temps | | Warmest Monthly Avg Min Temps | |
|--------------------------|-------------------------|-------------------------------|-------------------------|-------------------------------|-------------------------|
| 1 | 86.1 in Jul 2023 | 1 | 95.9 in Jun 1981 | 1 | 78.2 in Aug 2023 |
| 2 | 85.9 in Aug 2023 | 2 | 94.9 in Jun 2010 | | 78.2 in Jul 2023 |
| | 85.9 in Jun 1981 | | 94.9 in Jul 1942 | 3 | 77.5 in Jul 1981 |
| 4 | 85.7 in Jul 1981 | 4 | 94.6 in Jul 1979 | 4 | 77.3 in Aug 2024 |
| | 85.7 in Jul 1979 | 5 | 94.4 in Aug 1942 | 5 | 77.1 in Jul 2024 |
| 6 | 85.3 in Jul 2022 | 6 | 94.2 in Jun 1944 | | 77.1 in Aug 2008 |
| | 85.3 in Jun 2010 | 7 | 94.1 in Jul 2023 | | 77.1 in Aug 1995 |
| 8 | 85.2 in Jul 2024 | | 94.1 in Aug 1987 | 8 | 77.0 in Jul 2022 |
| | 85.2 in Aug 2022 | 9 | 94.0 in Jul 1997 | | 77.0 in Aug 1981 |
| 10 | 84.8 in Aug 2024 | 10 | 93.9 in Jul 1992 | 10 | 76.8 in Aug 2022 |
| | 84.8 in Jul 1997 | | 93.9 in Jul 1981 | | 76.8 in Aug 2011 |
| | 84.8 in Jul 1996 | ... | | | 76.8 in Sep 1979 |
| | 84.8 in Aug 1987 | 66 | 92.3 in Aug 2024 | | 76.8 in Jul 1979 |
| | | | 92.3 in Aug 2020 | | |
| | | | 92.3 in Jul 1998 | | |
| | | | 92.3 in Aug 1984 | | |
| | | | 92.3 in Aug 1975 | | |
| | | | 92.3 in Jun 1964 | | |
| | | | 92.3 in Jul 1961 | | |
| | | | 92.3 in Aug 1954 | | |
| | | | 92.3 in Jun 1950 | | |
| | | | 92.3 in Aug 1915 | | |

For more Climate information visit our web site at the following link:
<https://www.weather.gov/tampabay> and then rollover the Climate and Past Weather drop down menu above the graphical forecast images.