

SURE THRUROAD

ASTM A53, TYPE F, GRADE B STANDARD STEEL PIPE

The Only American-made CW Pipe

AMERICAN
METAL

 **Wheatland** *Tube*
A ZEKELMAN COMPANY



SureThread™ Made for Machinability

Not all standard pipe is the same. SureThread continuous weld (CW) standard pipe is far easier to bend, cut and thread than electric resistance weld (ERW) pipe. That means it's easier on your tools, your budget and your team. Plus, threading with CW pipe uses 22% less wattage than threading with ERW pipe. No wonder so many contractors prefer SureThread!

**ASTM A53
Grade B
approved**
for even more
applications



“We’re threading every day. We can’t afford inferior pipe.”

Nick LaMonto

*Piping Superintendent,
Automatic Mechanical Services, Inc.*

SURETHREAD CUSTOMER SINCE 1988



“We’re known as having the best quality...and I have to thank Wheatland.”

Roger Melton

CEO, Quality Pipe Products, Inc.

SURETHREAD CUSTOMER SINCE 2002

“SureThread is the only brand we use for fabrication. It creates less wear on our tools, which saves us money.”

Billy Gardner

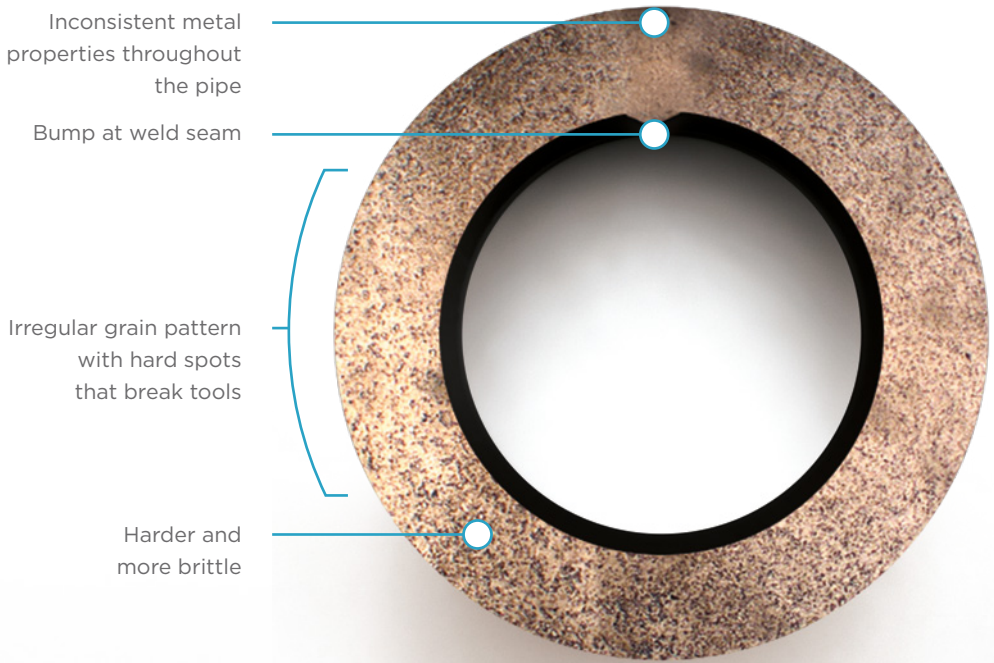
J.C. Cannistraro

SURETHREAD CUSTOMER SINCE 2014

OUR PROCESS MAKES YOURS EASIER.

SureThread is easier for you to work with because of the way it's manufactured. **The difference is clear.**





Inconsistent metal properties throughout the pipe

Bump at weld seam

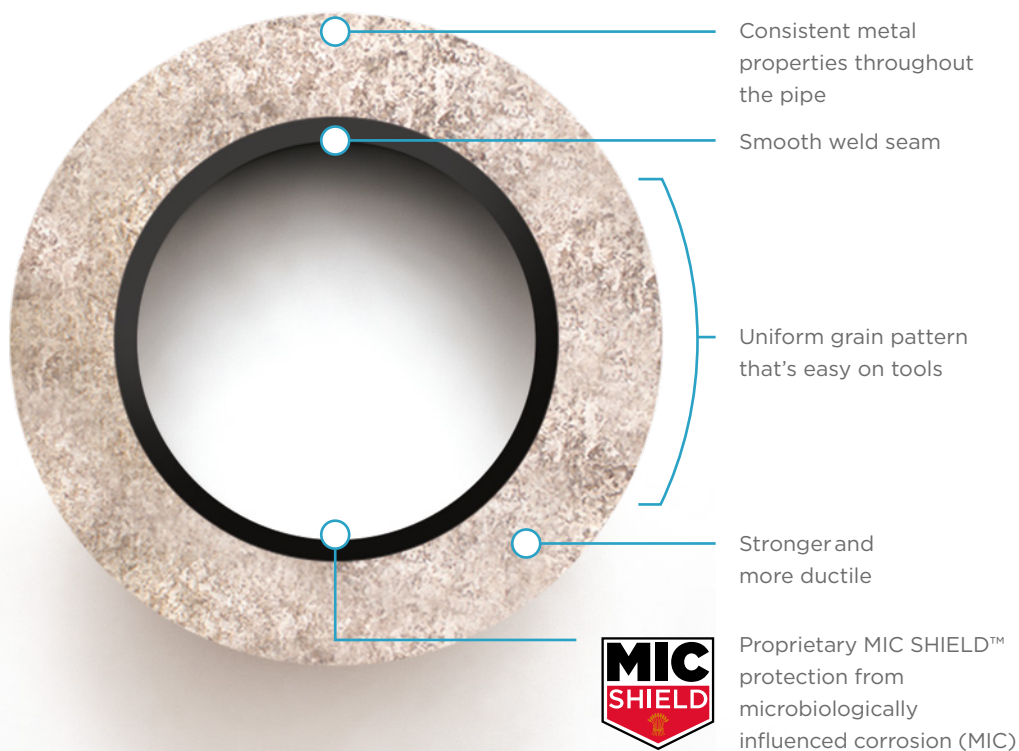
Irregular grain pattern with hard spots that break tools

Harder and more brittle

Cold-formed ERW Pipe

ERW pipe is cold-formed, which means the coiled steel is first bent by rollers into a cylindrical shape. Then the edges alone are heated to 2,600° F by revolving copper discs that serve as electrodes, creating a fusion weld. Finally, flash is removed from the OD.

S.



Hot-formed SureThread CW Pipe

SureThread is hot-formed, which means the entire piece of steel is heated during tube formation, not just the edges. We heat and then slowly cool the steel in order to toughen it and reduce its brittleness—a process known as annealing. As the coiled steel reaches 2,450° F, rollers bend the steel into a cylindrical shape and the pressure and heat fuse the edges together. There are no flash forms in this process.

Be Sure With SureThread

Wheatland Tube combines its strong history of manufacturing excellence with modern technology to deliver SureThread, the best solution for all your welded piping needs.

Save money with SureThread's better quality and longer tooling life.

- Stronger and more ductile for better grooving, threading, cutting and bending
- Full-body annealed with consistent Rockwell hardness for better machining
- Overall, the most economical steel pipe in the industry

Trust SureThread's industry-proven performance in all applications.

- Subjected to industry's most stringent testing protocol, including the NDT, groove test, weld integrity test and hydro test (up to 2,800 psi)
- Specified by the Department of Defense for fire systems
- Certifications: Uniform Plumbing Code, UL® and C-UL Listed, FM Approved, ISO and NSF-61

Trade sizes: ½-4

Finish options: Black, bare, pickled & oiled and hot-dip galvanized

**Ask for SureThread
to be sure on your next project.**

Visit wheatland.com/ST and we'll help you get connected with a distributor.

SURETHREAD WEIGHTS AND DIMENSIONS

TRADE SIZE	OD in.	SCHEDULE 40		SCHEDULE 80	
		Wall (in.)	Weight (lbs./ft.)	Wall (in.)	Weight (lbs./ft.)
½	0.84	0.109	0.85	0.147	1.09
¾	1.05	0.113	1.13	0.154	1.48
1	1.315	0.133	1.68	0.179	2.17
1¼	1.66	0.14	2.27	0.191	3
1½	1.900	0.145	2.72	0.2	3.63
2	2.375	0.154	3.66	0.218	5.03
2½	2.875	0.203	5.8	0.276	7.67
3	3.5	0.216	7.58	0.3	10.26
3½	4	0.226	9.12	0.318	12.52
4	4.5	0.237	10.8	0.337	15



1 Council Avenue
 P.O. Box 608
 Wheatland, PA 16161
 800.257.8182
 info@wheatland.com
 wheatland.com



Corporate Office
 227 West Monroe Street
 Suite 2600
 Chicago, IL 60606
 312.275.1600
 info@zekelman.com
 zekelman.com

About Wheatland Tube Standard Pipe

Wheatland produces a full line of standard pipe — SureThread and ERW pipe — in a broad range of sizes. We're the industry leader in hot-dip galvanized pipe, and we offer more than 350 different combinations of finish, end treatments and lengths on our standard pipe.

All Wheatland manufacturing locations' quality management systems are certified to ISO requirements.

For more information, contact Wheatland Tube at:

800.257.8182 or **info@wheatland.com**

Or, visit our website at wheatland.com

Follow us on:

 twitter.com/WheatlandTube

 youtube.com/ZekelmanIndustries

 linkedin.com/company/wheatlandtube

 wheatland.com/blog