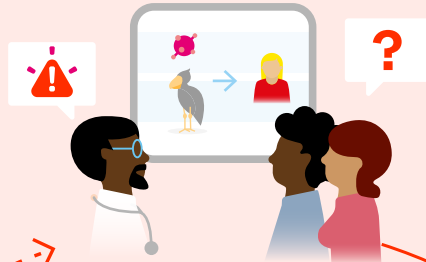
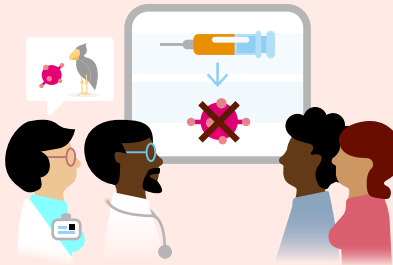


WHAT IS MY ROLE AS A CITIZEN IN THE ANIMAL DISEASE SURVEILLANCE SYSTEM?

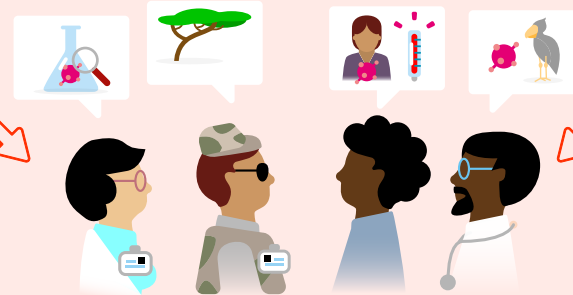
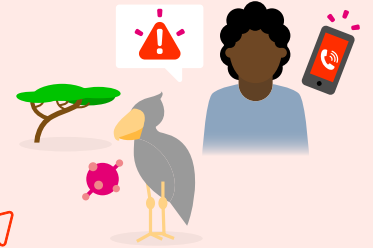
1 I educate myself on animal diseases transmissible to humans.



6 Professionals take note of the results and share with the community.

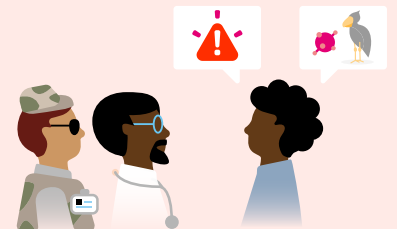


2 I help to detect dead or sick wild animals in my community.

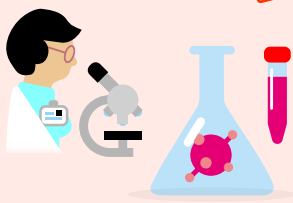


The animal health, human health and environmental sectors communicate with each other throughout these steps

3 I alert veterinarian or environmental workers of potential animal diseases in my community.



5 Laboratory technicians analyse the samples.



4 Veterinarians with the support of environmental workers take disease samples and send them to laboratories.



World Organisation
for Animal Health
Founded as OIE

www.woah.org