



UNITED STATES ENVIRONMENTAL PROTECTION AGENCY
WASHINGTON, D.C. 20460

JUN 27 1990

OFFICE OF
WATER

MEMORANDUM

SUBJECT: New NPDES Non-Municipal Permit Rating System

FROM: James W. Eider, Director
Office of Water Enforcement and Permits

TO: Regional Water Management Division Directors

At our recent meeting with Regional Permits and Compliance Branch Chiefs, we agreed to proceed with implementation of the new system for rating dischargers as major/minor for purposes of aiding the administration of the National Pollutant Discharge Elimination System. This new system restructures rating factors to better reflect today's concerns and priorities. The new rating system also provides considerable Regional and State flexibility in assuring that Regional factors relevant to the rating system may be effectively considered in identifying additional, discretionary major dischargers. Attached is a copy of the new NPDES Permit Rating Work Sheet and instruction booklet.

We will begin the implementation process July 1, 1990. The agreed upon outline for implementation is as follows:

1. Effective July 1, 1990, any previously unrated non-municipal facility applying for an NPDES permit will be rated using the new system.
2. A computer printout developed by our contractor, listing the non-municipal facilities in your respective Region that change major/minor status under the new system, has been provided to your staff. Each Region is to review and correct that printout by December 1, 1990.
3. The list of facilities that change status based on the computer analysis and your subsequent approval/correction will be entered into PCS July 1, 1991.
4. A facility that will no longer be rated as a major, but is in the reportable non-compliance or the resolve pending category as of July 1, 1991 will not be downgraded to a minor until the non-compliance is resolved.

5. The facilities not listed on the aforementioned computer printout will be re-rated using the new NPDES Permit Rating Work Sheet as each comes due for permit reissuance. Hence, all facilities will be re-rated within five years.

6. FY 91 will be a transition year for the measures under STARS that are affected by the majors rating (i.e., permitting, inspections, compliance tracking, etc.). Effective October 1, 1991, appropriate STARS commitments will rely on the new system.

It is expected that there will be unforeseen issues that will need to be resolved during the initial implementation phase of this project. I am committed to making the transition to the new system as smooth as possible, and we will continue to work closely with your staff to resolve issues as they arise.

Each Regional major/minor workgroup member will be sent an initial bulk mailing of NPDES Permit Rating Work Sheets and accompanying instruction booklets. A camera ready copy will also be enclosed to facilitate Regional reproduction of the material.

State involvement in the major/minor reclassification process continues to be very important. We are relying on each Region to keep States abreast of the upcoming changes to the rating system and the implementation process.

Thank you for your continued support of this project. Please do not hesitate to call if you have any questions or concerns. Deborah Gillette in the Permits Division is the staff contact for this project (FTS 382-2656). Deborah will continue to work closely with your designated workgroup member.

Attachments

cc: Regional Permit and Compliance Branch Chiefs

NPDES Permit Rating Work Sheet

- Regular Addition
- Discretionary Addition
- Score change, but no status change
- Deletion

NPDES No.: _____

Facility Name:

City: _____

Receiving Water: _____

Reach Number: _____

Is this facility a steam electric power plant (SIC=4911) with one or more of the following characteristics?

1. Power output 500 MW or greater (not using a cooling pond/lake)
2. A nuclear power plant
3. Cooling water discharge greater than 25% of the receiving stream's 7Q10 flow rate

YES; score is 600 (stop here) NO (continue)

Is this permit for a municipal separate storm sewer serving a population greater than 100,000?

- YES; score is 700 (stop here)
 NO (continue)

FACTOR 1: Toxic Pollutant Potential

PCS SIC Code: _____ Primary SIC Code: _____

Other SIC Codes: _____

Industrial Subcategory Code: _____ (Code 000 if no subcategory)

Determine the Toxicity potential from Appendix A. Be sure to use the TOTAL toxicity potential column and check one)

Toxicity Group	Code	Points	Toxicity Group	Code	Points	Toxicity Group	Code	Points
<input type="checkbox"/> No process waste streams	0	0	<input type="checkbox"/> 3.	3	15	<input type="checkbox"/> 7.	7	35
<input type="checkbox"/> 1.	1	5	<input type="checkbox"/> 4.	4	20	<input type="checkbox"/> 8.	8	40
<input type="checkbox"/> 2.	2	10	<input type="checkbox"/> 5.	5	25	<input type="checkbox"/> 9.	9	45
			<input type="checkbox"/> 6.	6	30	<input type="checkbox"/> 10.	10	50

Code Number Checked: _____

Total Points Factor 1: _____

FACTOR 2: Flow/Stream Flow Volume (Complete either Section A or Section B; check only one)

Section A—Wastewater Flow Only Considered

Wastewater Type (See Instructions)	Code	Points
Type I: Flow < 5 MGD	<input type="checkbox"/> 11	0
Flow 5 to 10 MGD	<input type="checkbox"/> 12	10
Flow >10 to 50 MGD	<input type="checkbox"/> 13	20
Flow > 50 MGD	<input type="checkbox"/> 14	30
Type II: Flow <1 MGD	<input type="checkbox"/> 21	10
Flow 1 to 5 MGD	<input type="checkbox"/> 22	20
Flow >5 to 10 MGD	<input type="checkbox"/> 23	30
Flow >10 MGD	<input type="checkbox"/> 24	50
Type III: Flow <1 MGD	<input type="checkbox"/> 31	0
Flow 1 to 5 MGD	<input type="checkbox"/> 32	10
Flow >5 to 10 MGD	<input type="checkbox"/> 33	20
Flow >10 MGD	<input type="checkbox"/> 34	30

Section B—Wastewater and Stream Flow Considered

Wastewater Type (See Instructions)	Percent of In-stream Wastewater Concentration at Receiving Stream Low Flow	Code	Points
TYPE I/III:	< 10%	<input type="checkbox"/> 41	0
	≥ 10% to <50%	<input type="checkbox"/> 42	10
	≥ 50%	<input type="checkbox"/> 43	20
Type II:	< 10%	<input type="checkbox"/> 51	0
	≥ 10% to <50%	<input type="checkbox"/> 52	20
	≥ 50%	<input type="checkbox"/> 53	30

Code Checked from Section A or B: _____

Total Points Factor 2: _____

NPDES Permit Rating Work Sheet

FACTOR 3: Conventional Pollutants

NPDES No.: _____

(only when limited by the permit)

A. Oxygen Demanding Pollutants (check one) BOD COD Other: _____

Permit Limits (check one)		Code	Points
<input type="checkbox"/>	<100 lbs/day	1	0
<input type="checkbox"/>	100 to 1000 lbs/day	2	5
<input type="checkbox"/>	>1000 to 3000 lbs/day	3	15
<input type="checkbox"/>	>3000 lbs/day	4	20

Code Checked: _____

Points Scored: _____

B. Total Suspended Solids (TSS)

Permit Limits (check one)		Code	Points
<input type="checkbox"/>	<100 lbs/day	1	0
<input type="checkbox"/>	100 to 1000 lbs/day	2	5
<input type="checkbox"/>	>1000 to 5000 lbs/day	3	15
<input type="checkbox"/>	>5000 lbs/day	4	20

Code Checked: _____

Points Scored: _____

C. Nitrogen Pollutants (check one) Ammonia Other: _____

Permit Limits (check one)	Nitrogen Equivalent	Code	Points
<input type="checkbox"/>	<300 lbs/day	1	0
<input type="checkbox"/>	300 to 1000 lbs/day	2	5
<input type="checkbox"/>	>1000 to 3000 lbs/day	3	15
<input type="checkbox"/>	>3000 lbs/day	4	20

Code Checked: _____

Points Scored: _____

Total Points Factor 3: _____

FACTOR 4: Public Health Impact

Is there a public drinking water supply located within 50 miles downstream of the effluent discharge (this includes any body of water to which the receiving water is a tributary)? A public drinking water supply may include infiltration galleries, or other methods of conveyance that ultimately get water from the above referenced supply.

YES (if yes, check toxicity potential number below)

NO (if no, go to Factor 5)

Determine the **human health** toxicity potential from Appendix A. Use the same SIC code and subcategory reference as in Factor 1. (Be sure to use the **human health** toxicity group column -- check one below)

Toxicity Group	Code	Points	Toxicity Group	Code	Points	Toxicity Group	Code	Points
<input type="checkbox"/> No. process was at streams	0	0	<input type="checkbox"/> 3.	3	0	<input type="checkbox"/> 7.	7	15
<input type="checkbox"/> 1.	1	0	<input type="checkbox"/> 4.	4	0	<input type="checkbox"/> 8.	8	20
<input type="checkbox"/> 2.	2	0	<input type="checkbox"/> 5.	5	5	<input type="checkbox"/> 9.	9	25
			<input type="checkbox"/> 6.	6	10	<input type="checkbox"/> 10.	10	30

Code Number Checked: _____

Total Points Factor 4: _____

NPDES Permit Rating Work Sheet

FACTOR 5: Water Quality Factors

NPDES No.: | | | | | | | | | | | |

A. *Is (or will) one or more of the effluent discharge limits based on water quality factors of the receiving stream (rather than technology-based federal effluent guidelines, or technology-based state effluent guidelines), or has a wasteload allocation been assigned to the discharge?*

	Code	Points
<input type="checkbox"/> Yes	1	10
<input type="checkbox"/> No	2	0

B. *Is the receiving water in compliance with applicable water quality standards for pollutants that are water quality limited in the permit?*

	Code	Points
<input type="checkbox"/> Yes	1	0
<input type="checkbox"/> No	2	5

C. *Does the effluent discharged from this facility exhibit the reasonable potential to violate water quality standards due to whole effluent toxicity?*

	Code	Points
<input type="checkbox"/> Yes	1	10
<input type="checkbox"/> No	2	0

Code Number Checked: A | | B | | C | |

Points Factor 5: A | | + B | | + C | | = | | TOTAL

FACTOR 6: Proximity to Near Coastal Waters

A. *Base Score: Enter flow code here (from Factor 2):* | | | | *Enter the multiplication factor that corresponds to the flow code:* | | | |

Check appropriate facility HPRI Code (from PCS):

<input type="checkbox"/>	HPRI #	Code	HPRI Score	Flow Code	Multiplication Factor
<input type="checkbox"/>	1	1	20	11, 31, or 41	0.00
<input type="checkbox"/>	2	2	0	12, 32, or 42	0.05
<input type="checkbox"/>	3	3	30	13, 33, or 43	0.10
<input type="checkbox"/>	4	4	0	14 or 34	0.15
<input type="checkbox"/>	5	5	20	21 or 51	0.10
				22 or 52	0.30
				23 or 53	0.60
				24	1.00

HPRI code checked: | | |

Base Score: (HPRI Score) _____ x (Multiplication Factor) _____ = _____ (TOTAL POINTS)

B. *Additional Points — NEP Program*
For a facility that has an HPRI code of 3, does the facility discharge to one of the estuaries enrolled in the National Estuary Protection (NEP) program (see Instructions) or the Chesapeake Bay?

	Code	Points
<input type="checkbox"/> Yes	1	10
<input type="checkbox"/> No	2	0

C. *Additional Points — Great Lakes Area of Concern*
For a facility that has an HPRI code of 5, does the facility discharge any of the pollutants of concern into one of the Great Lakes' 31 areas of concern (see Instructions)?

	Code	Points
<input type="checkbox"/> Yes	1	10
<input type="checkbox"/> No	2	0

Code Number Checked: A | | B | | C | |

Points Factor 6: A | | + B | | + C | | = | | TOTAL

NPDES Permit Rating Work Sheet

SCORE SUMMARY

NPDES No.: | | | | | | | | | | | | | | | |

Factor	Description	Total Points
1	Toxic Pollutant Potential	_____
2	Flow/Streamflow Volume	_____
3	Conventional Pollutants	_____
4	Public Health Impacts	_____
5	Water Quality Factors	_____
6	Proximity to Near Coastal Waters	_____
	TOTAL (Factors 1 through 6)	_____

S1. Is the total score equal to or greater than 80? Yes (Facility is a major) No

S2. If the answer to the above question is no, would you like this facility to be discretionary major?

- No
- Yes (Add 500 points to the above score and provide reason below:

Reason: _____

NEW SCORE: _____

OLD SCORE: _____

Permit Reviewer's Name

(____) _____
Phone Number

Date

INSTRUCTIONS FOR COMPLETING THE NPDES PERMIT RATING WORK SHEET

General Information

From the permit, enter the NPDES number, facility name, and city. Enter the receiving water name and EPA reach number. ■

The eleven digit reach number for a facility can be obtained through the use of the STORET water quality database that resides on the EPA IBM mainframe computer. The user will need to have a USERID to access the computer and will need to have STORET database privileges. See your EPA ADP coordinator for the former and call STORET User Support at 1-800-424-9067 for the latter. Once these items have been obtained, the user may access a procedure known as the "PCS/STORET Interface" (or IPS5). This procedure links the PCS and STORET databases together and allows the user to obtain information from both. In order to obtain information from the PCS system, the user will have to be approved by PCS for access. Call PCS User Support for information on getting access to this database. However, access to PCS is not necessary for obtaining a reach number.

Once logged on to the EPA IBM computer, simply issue the following command at the "Ready" prompt: *WQAB IPS5*. The procedure will ask you to provide an NPDES number; the rest is menu driven. One of the reports that is available from the procedure is the "Basic" report. This will provide the reach number. Questions about the use of this procedure may be directed to Phillip Taylor at FTS 382-7046 or (202) 382-7046.

Answer the next two questions regarding steam electric facilities and stormwater permits. An answer of "yes" to either of these questions automatically makes this facility a major. A steam electric major will be automatically assigned a score of 600 and stormwater major will be assigned a score of 700. If either of the "yes" boxes are checked, there is no need to go further.

FACTOR 1: Toxic Pollutant Potential

Determine what SIC codes are assigned to the facility covered by the permit. This will usually be on page II-3 of Form C. Be sure that the SIC codes are those contained in the latest SIC code book published in 1987. If the facility has more than one outfall, there will be a Section II for each outfall. When multiple SIC codes are assigned, select the one that appears to represent the primary activity at the facility and enter it in the primary SIC code box. Then enter up to three other SIC codes in the indicated boxes, selecting those that appear most significant if more than four have been reported (this will be rare).

Use the primary SIC code to search Appendix A of these instructions to determine if there are industrial subcategories for that SIC code. If not, there will be a single entry in Appendix A for that SIC code or no entry at all. If there are subcategories (indicated by multiple entries for one SIC code), select the subcategory that best corresponds to this facility. Use the CFR part and subpart number to help you identify the appropriate subcategory. Continue this procedure for each of the other SIC codes recorded. Select the industrial subcategory for the SIC code that has the highest toxicity group. Enter the industrial subcategory code on the rating sheet (use 000 if there is no subcategory) and check the appropriate TOTAL toxicity potential number. Note that regardless of the facility's SIC code, if the facility discharges no process waste stream to a receiving water, the points scored are 0.

Enter the appropriate code number and points scored for Factor 1 in the shaded area.

FACTOR 2: Flow/Stream Flow Volume

This factor consists of two methods, A and B. Section A or Section B should be completed, but not both. Section A takes into account only the quantity and type of wastewater discharge from the facility. Section B scores the facility for not only the quantity and type of wastewater discharged, but also its relationship to the receiving stream low flow.

Determine the wastewater type (I, II, or III) based on the relative volumes of noncontact cooling waters, process wastewaters, and other wastewaters in the total combined discharge from the facility.

- a. Type I: Noncontact cooling waters are once-through cooling only and do not include blowdown from cooling towers and recirculating cooling systems.
- b. Type II: Process wastewaters include wastewaters resulting from most manufacturing processes, contact cooling water, and contaminated surface run-off.
- c. Type III: Other wastewaters include boiler blowdown, blowdown from cooling towers and recirculating cooling systems, sanitary wastewater, and uncontaminated surface runoff.

The relative volumes of different wastewaters discharged can usually be determined from the permit application. Use Figure 1 to determine the wastewater type. If the entire discharge is noncontact cooling water, it is Type I. If it is all process wastewater, it is Type II. If it is neither noncontact cooling water or process wastewater, it is Type III. If the flow contains more than 1 MGD of process wastewater or more than 10 percent process wastewater, it is Type II. If the flow is predominantly noncontact cooling water (more than 90 percent) and contains less than 1 MGD of process wastewaters, it is Type I.

Once the wastewater type has been determined, compute the total volume of wastewater discharged for all outfalls. This is the sum of the daily average discharges for each outfall shown in the permit application.

On the worksheet under the type of wastewater selected, check the appropriate flow range. Although a facility may discharge some of any or all of the three types of wastewater, only one flow range and type should be checked representing the composite of all flows. Record the two-digit flow code checked in the code box and the associated points in the total points box in the shaded area under Section A.

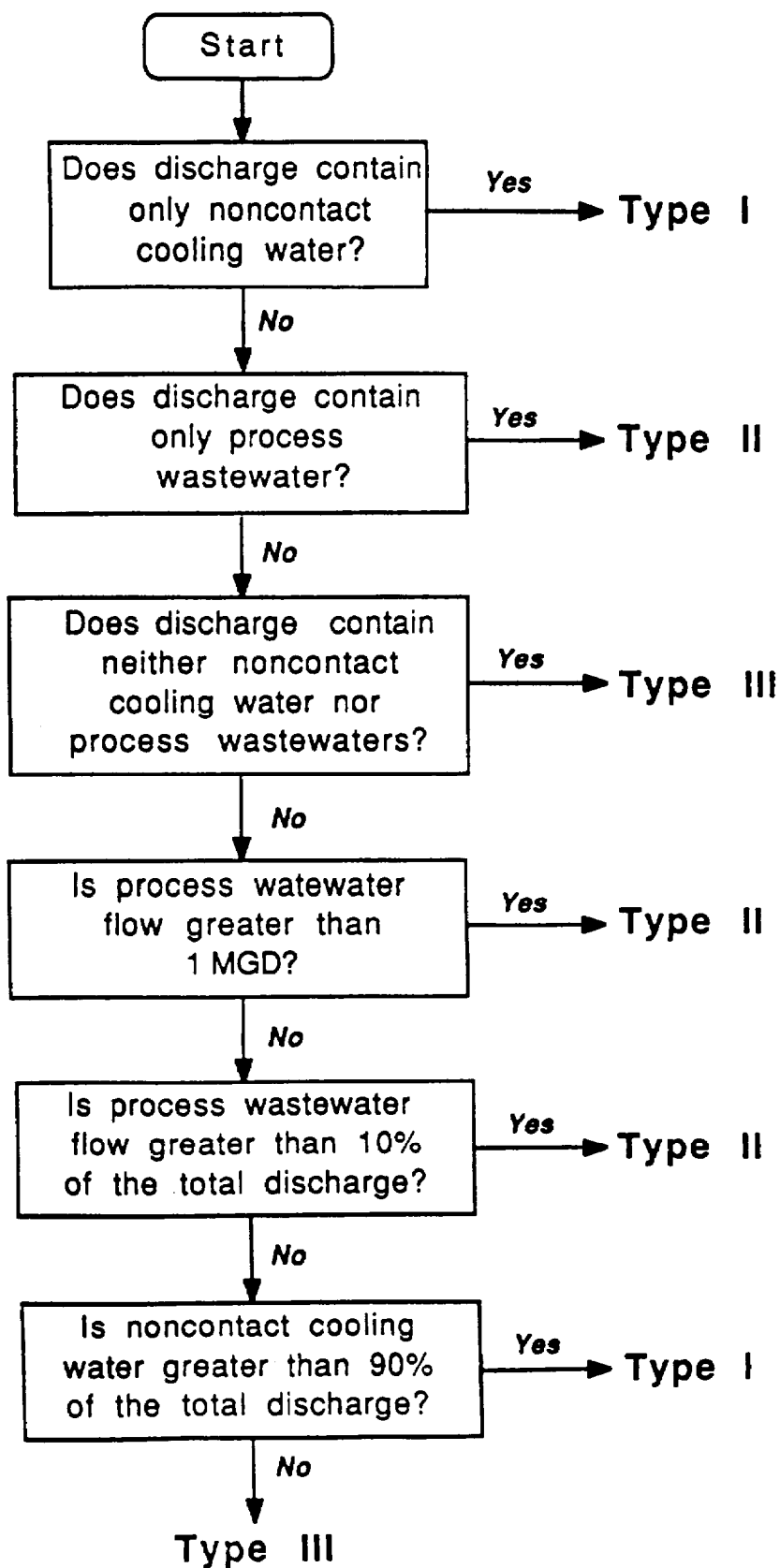
For a few selected facilities, the volume of wastewater discharged may be large relative to the low flow of the receiving water. Section B of the rating work sheet allows the reviewer to calculate rating points based on the relative amounts and types of wastewater and receiving stream flows. The reviewer should identify the type of wastewater discharged from the facility based on the procedure described above and in Figure 1. The other piece of information that will be necessary to complete Section B is the receiving stream's low flow (i.e., the 7Q10 flow or the state standard). Check off the box that most closely describes the circumstances at this facility and enter the appropriate code and points in the shaded box under Section B.

FACTOR 3: Conventional Pollutants

Data on conventional pollutants are obtained from the NPDES permit. This may be present in the permit and/or compliance files. Review the permit to see what traditional pollutants (i.e., oxygen demanding, TSS, and Ammonia) are limited. Conventional pollutant loads are to be computed only when they are limited by the permit. Use the current permit limits if the permit contains two or more sets of limits for each outfall.

Add the daily average load for the oxygen-demanding pollutant and identify on the work sheet what this parameter is (e.g., BOD, COD, TOC, UOD, etc.). If the permit is limited for more than one oxygen-demanding pollutant, use the one that provides the highest load. Most effluent limits specify loads in

Figure 1
Wastewater Type Selection Flow Diagram



kilograms or pounds per day. However, they may sometimes be given in concentration units (usually mg/l) or in loads per production unit, such as kg BOD/1000 kg of product. In such cases, the discharge must be converted to loads in terms of pounds per day using standard conversion factors and flow and/or production data from the application or the discharge monitoring reports (DMRs).

Once the load has been determined, check the appropriate box and enter the code number checked and the points scored in the shaded area. Continue this for TSS and Ammonia if these pollutants are limited.

FACTOR 4: Public Health Impact

Determine if there is a public drinking water supply within 50 miles downstream of the facility. (A drinking water intake may include infiltration galleries or other methods of conveyance that ultimately get it's water from the receiving stream of the NPDES facility). If this condition is true, answer "yes" to the question posed on the rating work sheet. Determine the human health toxicity potential from Appendix A in a similar manner as outlined in Factor 1 of this instruction sheet. Once the toxicity number has been identified, enter the code number and the points scored in the shaded area.

If there are no drinking water utilities within 50 miles downstream of this facility, answer "no" to this question and continue to Factor 5.

FACTOR 5: Water Quality Factors

Determine if the discharge is subject to water quality limiting factors. This will be true if the discharge is to a stream designated as water quality limiting by the State agency or for which waste-load allocations have been established. This will also be true if some of the effluent limits in the permit are based on water quality conditions in the receiving stream rather than on effluent guidelines (technology-based, the usual case). Making this determination may be somewhat difficult. Sources to review for the necessary information are the Fact Sheet (the rationale on which permit limits were based), water quality inventory reports prepared by the State and submitted to EPA biennially as required by Section 305, and area-wide Waste Treatment Management planning reports prepared for some urban areas by local planning agencies under Section 208. Some states may have reports summarizing these data.

Some facilities may have had whole effluent toxicity studies performed within the last two years. If this is true and the results of those tests indicated that the effluent from this facility shows toxicity, answer "yes" to question in Section C of this factor.

After answering questions A, B, and C, enter the appropriate code and points in the shaded area.

FACTOR 6: Proximity to Near Coastal Waters

Facilities may receive addition points if their discharge is to a water that is considered a "near coastal water." Each facility nationally has been assigned a Headquarters Priority Permit Indicator (HPRI). These codes range from 1 through 5, or a facility may have no code. The following are the definitions of each code

<u>Code</u>	<u>Description</u>
1	§403(c) direct ocean discharger: dischargers seaward of the inner baseline of territorial seas. These facilities were identified in the §403(c) Report to Congress.

<u>Code</u>	<u>Description</u>
2	Discharger in coastal county not in a major estuary drainage area and not a §403(c) discharger.
3	Discharger into a major estuary or estuary drainage area.
4	Discharger in a non-coastal county, some part of which is in an estuary drainage area, discharging into fresh non-tidal waters.
5	Great Lakes discharger: dischargers that are located in a county that physically borders the Great Lakes except where the discharge is diverted into another basin (e.g., Mississippi River).

The reviewer should enter the two-digit flow code found in the section of the work sheet known as Factor 2. From PCS, ascertain the appropriate HPRI code for this facility or determine the appropriate HPRI code from the above definition. If the facility is not a near coastal facility, skip this factor entirely and continue to the score summary.

Identify the appropriate multiplication factor based on the Factor 2 flow code. Enter the HPRI score and the multiplication factor in the appropriate blanks and perform the multiplication. Enter the HPRI code checked and the points scored for Section A in the shaded area.

Facilities will receive additional points if they are discharging to an estuary that is listed in the National Estuary Protection (NEP) program (see Appendix B) or the Chesapeake Bay. Alternatively, facilities can receive additional points if they discharge to one of the Great Lakes Areas of Concern. To receive points under the Great Lakes Area of Concern section, the facility must be discharging at least one of the pollutants of concern for each of the geographic locations (see Appendix C). Points may be scored for either Section B or Section C of this factor, but not both.

Score Summary

Enter the total points scored under each of the six factors considered in this rating work sheet. Add the scores together and if the sum is greater than or equal to 80, the facility is considered a major. If a facility has scored less than 80 points and the reviewer feels that the facility should still be considered a major, the reviewer may make the facility a discretionary major by adding 500 points to the total score of each of the factors. Each EPA Region is allocated a certain number of discretionary majors. This number is a flat 50 or 10% of the actual majors plus 40, whichever is higher. Example: If Region I had 300 actual majors, the number of allocated discretionary majors would be 70 (i.e., $(300 \times .1) + 40 = 70$). Should the reviewer wish to make this facility a discretionary major, it is strongly urged that the reasoning for this decision be provided on the rating work sheet.

To assist reviewers in ascertaining the candidates for discretionary addition, Appendix D provides some guidelines for ranking specific industrial categories.

APPENDIX A
SIC Code Cross Reference
and Total and Human Health Toxicity Number

1972/ 1977	1987		CFR	CFR	Sub-part title	Human Health Toxicity Number	Total Toxicity Number	Industr Subcat Number
SIC Code	SIC Code	1987 Title	CFR Part	Sub Part				
211	211	BEEF CATTLE FEEDLOTS	412	A	All Feedlots Except Ducks	1	1	0
212	212	BEEF CATTLE, EXCEPT FEEDLOTS		NR	Beef Cattle not in Feedlots	1	1	99
213	213	HOGS	412	A	All Feedlots Except Ducks	1	1	0
213	213	HOGS		NR	Hogs not in Feedlots	1	1	99
214	214	SHEEP AND GOATS	412	A	All Feedlots except Ducks	1	1	0
214	214	SHEEP AND GOATS		NR	Sheep and Goats not in Feedlots	1	1	99
219	219	GENERAL LIVESTOCK, NEC		NR	General Livestock Farms	1	1	99
241	241	DAIRY FARMS	412	A	All Feedlots Except Ducks	1	1	0
241	241	DAIRY FARMS		NR	DAIRY CATTLE NOT CONFINED	1	1	99
251	251	BROILER, FRYER AND ROASTER CHICKENS	412	A	All Feedlots Except Ducks	1	1	0
252	252	CHICKEN EGGS	412	A	All Feedlots Except Ducks	1	1	0
253	253	TURKEY AND TURKEY EGGS	412	A	All Feedlots Except Ducks	1	1	0
254	254	POULTRY HATCHERIES		NR	Hatcheries Without Poultry Feeding	1	1	99
259	259	POULTRY AND EGGS, NEC	412	B	Ducks	1	1	0
259	259	POULTRY AND EGGS, NEC		NR	Other Poultry Farms	1	1	99
271	271	FUR-BEARING ANIMALS AND RABBITS		NR		1	1	99
272	272	HORSES AND OTHER EQUINES		NR		1	1	99
279	273	ANIMAL SPECIALTIES, NEC		NR		1	1	99
279	279	ANIMAL SPECIALTIES, NEC		NR		1	1	99
291	291	GENERAL FARMS, PRIMARILY LIVESTOCK		NR		1	1	99
291	291	GENERAL FARMS, PRIMARILY LIVESTOCK		NR		1	1	99
721	721	CROP PLANTING & PROTECTION		NR	Crop Dusting & Spraying	6	6	99
721	721	CROP PLANTING & PROTECTION		NR	Crop Planting/Cultivation	1	1	99
921	921	FISH HATCHERIES AND PRESERVES		NR		1	1	99
1011	1011	IRON ORES	440	A	Iron Ore	7	7	0
1021	1021	COPPER ORES	440	J	Cu, Pb, Zn, Ag, Au, Mo Ores	8	10	0
1031	1031	LEAD AND ZINC ORES	440	J	Cu, Pb, Zn, Ag, Au, Mo Ores	8	10	0
1041	1041	GOLD ORES	440	J	Cu, Pb, Zn, Ag, Au, Mo Ores	8	10	1
1041	1041	GOLD ORES	440	M	Gold Placer Mines	8	9	2
1044	1044	SILVER ORES	440	J	Cu, Pb, Zn, Ag, Au, Mo Ores	8	10	0
1051	1099	BAUXITE & OTHER ALUMINUM ORES	440	B	Aluminum Ore	5	10	0
1061	1061	FERROALLOY ORES, EXCEPT VANADIUM	440	F	Tungsten Ore	1	6	1
1061	1061	FERROALLOY ORES, EXCEPT VANADIUM	440	G	Nickel Ores	8	8	2
1061	1061	FERROALLOY ORES, EXCEPT VANADIUM	440	J	Cu, Pb, Zn, Ag, Au, Mo Ores	7	7	3
1061	1061	FERROALLOY ORES, EXCEPT VANADIUM		NR	Ferroalloy Ores, NEC	8	8	99
1081	1081	METAL MINING SERVICES		NR	Exploration/Development	8	8	99
1092	1099	MERCURY ORES	440	D	Mercury Ores	8	8	0
1094	1094	URANIUM-RADIUM-VANADIUM ORES	440	C	Uranium-Radium-Vanadium Ores	8	9	1
1094	1094	URANIUM-RADIUM-VANADIUM ORES	440	H	Vanadium Ore	8	8	2
1099	1099	METAL ORES, NEC	440	E	Titanium Ores	1	4	1
1099	1099	METAL ORES, NEC	440	I	Antimony Ore	8	8	2
1099	1099	METAL ORES, NEC	440	K	Platinum Ores	8	8	3
1099	1099	METAL ORES, NEC		NR	Metal Ore, NEC	8	8	99
1111	1231	ANTHRACITE MINING	434	B	Coal Preparation Plants	6	6	4
1111	1231	ANTHRACITE MINING	434	C	Acid or Ferruginous Mine Drainage	5	5	1
1111	1231	ANTHRACITE MINING	434	D	Alkaline Mine Drainage	5	5	2
1111	1231	ANTHRACITE MINING	434	E	Post Mining Areas	5	5	5
1112	1241	ANTHRACITE MINING SERVICES		NR		5	5	99
1211	1221	BITUMINOUS COAL AND LIGNITE	434	B	Coal Preparation Plants	6	5	3
1211	1221	BITUMINOUS COAL AND LIGNITE	434	C	Acid or Ferruginous Mine Drainage	5	5	1
1211	1221	BITUMINOUS COAL AND LIGNITE	434	D	Alkaline Mine Drainage	5	5	2
1211	1221	BITUMINOUS COAL AND LIGNITE	434	E	Post Mining Areas	5	5	4
1211	1222	BITUMINOUS COAL AND LIGNITE	434	B	COAL PREPARATION PLANTS	6	6	5
1211	1222	BITUMINOUS COAL AND LIGNITE	434	C	ACID OR FERRUGINOUS MINE DRAINAGE	5	5	6

APPENDIX A
SIC Code Cross Reference
and Total and Human Health Toxicity Number

1987 SIC Code	1987 SIC Code	1987 Title	CFR Part	CFR Sub- Part	Sub-part title	Human Health Toxicity Number	Total Toxicity Number	Industry Subcat Number
11	1222	BITUMINOUS COAL AND LIGNITE	434	D	ALKALINE MINE DRAINAGE	5	5	7
1211	1222	BITUMINOUS COAL AND LIGNITE	434	E	POST MINING AREAS	5	5	8
1213	1241	BITUMINOUS COAL AND LIGNITE MINING SERVI		NR		5	5	99
1311	1311	CRUDE PETROLEUM AND NATURAL GAS	435	A	Offshore	1	1	1
1311	1311	CRUDE PETROLEUM AND NATURAL GAS	435	C	Onshore	1	1	2
1311	1311	CRUDE PETROLEUM AND NATURAL GAS	435	D	Coastal	1	1	3
1311	1311	CRUDE PETROLEUM AND NATURAL GAS	435	E	Agricultural & Wildlife Water Use	1	1	4
1311	1311	CRUDE PETROLEUM AND NATURAL GAS	435	F	Stripper	5	5	5
1321	1321	NATURAL GAS LIQUIDS		NR		1	1	99
1381	1381	DRILLING OIL AND GAS WELLS	435	C	Onshore	1	1	0
1382	1382	OIL AND GAS FIELD EXPLORATION SERVICES		NR		1	1	99
1389	1389	OIL AND GAS FIELD SERVICES, NEC		NR		1	1	99
1411	1411	DIMENSION STONE	436	A	Dimension Stone	1	1	0
1422	1422	CRUSHED AND BROKEN LIMESTONE	436	B	Crushed Stone	1	1	0
1423	1423	CRUSHED AND BROKEN GRANITE	436	B	Crushed Stone	1	1	0
1429	1429	CRUSHED AND BROKEN STONE, NEC	436	B	Crushed Stone	1	1	0
1442	1442	CONSTRUCTION SAND AND GRAVEL	436	C	CONSTRUCTION SAND AND GRAVEL	1	1	0
1446	1446	INDUSTRIAL SAND	436	D	Industrial Sand	1	1	0
1452	1459	BENTONITE	436	V	Bentonite	1	1	0
1453	1459	FIRE CLAY	436	AA	Fire Clay	1	1	0
1454	1459	FULLER'S EARTH		NR		1	1	99
1455	1455	KAOLIN AND BALL CLAY	436	AG	Kaolin	1	1	1
1455	1455	KAOLIN AND BALL CLAY	436	AH	Ball Clay	1	1	2
1459	1459	CLAY, CERAMIC AND REFRACTORY MATERIALS,	436	AI	FELDSPAR	1	1	5
1459	1459	CLAY, CERAMIC AND REFRACTORY MATERIALS,	436	AC	KYAMITE	1	1	2
1459	1459	CLAY, CERAMIC AND REFRACTORY MATERIALS,	436	AD	SHALE AND COMMON CLAY	1	1	3
1459	1459	CLAY, CERAMIC AND REFRACTORY MATERIALS,	436	AE	APLITE	1	1	4
1459	1459	CLAY, CERAMIC AND REFRACTORY MATERIALS,	436	W	MAGNESITE	1	1	1
1459	1459	CLAY, CERAMIC AND REFRACTORY MATERIALS,		NR	OTHER CLAY,CERAMIC AND REFR MINERALS NR	1	1	99
1472	1479	BARITE	436	J	BARITE	1	1	0
1473	1479	FLUORSPAR	436	K	FLUORSPAR	1	1	0
1474	1474	POTASH, SODA AND BORATE MINERALS	436	L	SALINES FROM BRINE LAKES	1	1	1
1474	1474	POTASH, SODA AND BORATE MINERALS	436	N	POTASH	1	1	3
1474	1474	POTASH, SODA AND BORATE MINERALS	436	M	BORAX	1	1	2
1474	1474	POTASH, SODA AND BORATE MINERALS	436	O	SODIUM SULFATE	1	1	4
1474	1474	POTASH, SODA AND BORATE MINERALS		NR	OTHER POTASH,SODA AND BORATE MINERALS NR	1	1	99
1474	1474	POTASH, SODA AND BORATE MINERALS	436	P	TROMA	1	1	5
1475	1475	PHOSPHATE ROCK	436	R	Phosphate Rock	6	6	0
1476	1479	ROCK SALT	436	Q	ROCK SALT	1	1	0
1477	1479	SULFUR	436	S	FRASCH SULFER	1	1	0
1479	1479	CHEMICAL AND FERTILIZER MINERAL MINING,	436	T	MINERAL PIGMENTS	1	1	1
1479	1479	CHEMICAL AND FERTILIZER MINERAL MINING,	436	U	LITHIUM	1	1	2
1479	1479	CHEMICAL AND FERTILIZER MINERAL MINING,		NR	OTHER CHEMICAL/FERTILIZER MINERALS NR	1	1	99
1481	1481	NONMETALLIC MINERALS (EXCEPT FUELS) SERV		NR		1	1	99
1492	1499	GYPSUM	436	E	GYPSUM	1	1	0
1496	1499	TALC, SOAPSTONE AND PYROPHYLLITE	436	AJ	TALC,STEATITE,SOAPSTONE AND PYROPHYLLITE	1	1	0
1499	1499	MISCELLANEOUS NONMETALLIC MINERALS, NEC	436	G	ASBESTOS AND WOLLASTONITE	1	1	2
1499	1499	MISCELLANEOUS NONMETALLIC MINERALS, NEC	436	F	ASPHALTIC MINERAL	1	1	1
1499	1499	MISCELLANEOUS NONMETALLIC MINERALS, NEC	436	I	MICA AND SERACITE	1	1	3
1499	1499	MISCELLANEOUS NONMETALLIC MINERALS, NEC	436	X	DIATOMITE	1	1	4
1499	1499	MISCELLANEOUS NONMETALLIC MINERALS, NEC	436	Y	JADE	1	1	5
1499	1499	MISCELLANEOUS NONMETALLIC MINERALS, NEC	436	AF	TRIPOLI	1	1	6
1499	1499	MISCELLANEOUS NONMETALLIC MINERALS, NEC	436	AK	GARNET	1	1	7
1499	1499	MISCELLANEOUS NONMETALLIC MINERALS, NEC	436	AL	GRAPHITE	1	1	8

APPENDIX A
SIC Code Cross Reference
and Total and Human Health Toxicity Number

1972/ 1977	1987		CFR		Human			
SIC	SIC	1987	CFR	Sub-	Sub-part title	Health	Total	Indust
Code	Code	Title	Part	Part		Toxicity	Toxicity	Subcat
						Number	Number	Number
1499	1499	MISCELLANEOUS NONMETALLIC MINERALS, NEC		NR	OTHER MISC NONMETALLIC MINERALS NR	1	1	99
2011	2011	MEAT PACKING PLANTS	432	A	SIMPLE SLAUGHTERHOUSE	1	1	1
2011	2011	MEAT PACKING PLANTS	432	B	COMPLEX SLAUGHTERHOUSE	1	1	2
2011	2011	MEAT PACKING PLANTS	432	C	LOW-PROCESSING PACKING HOUSE	1	1	3
2011	2011	MEAT PACKING PLANTS	432	D	HIGH-PROCESSING PACKING HOUSE	1	1	4
2013	2013	SAUSAGES AND OTHER PREPARED MEAT PRODUCT	432	E	SMALL PROCESSOR	1	1	1
2013	2013	SAUSAGES AND OTHER PREPARED MEAT PRODUCT	432	F	MEAT CUTTER	1	1	2
2013	2013	SAUSAGES AND OTHER PREPARED MEAT PRODUCT	432	G	SAUSAGE AND LUNCHEON MEATS PROCESSOR	1	1	3
2013	2013	SAUSAGES AND OTHER PREPARED MEAT PRODUCT	432	H	HAM PROCESSOR	1	1	4
2013	2013	SAUSAGES AND OTHER PREPARED MEAT PRODUCT	432	I	CANNED MEATS PROCESSOR	1	1	5
2016	2015	POULTRY DRESSING PLANTS	432	B	COMPLEX SLAUGHTERHOUSE	1	1	2
2016	2015	POULTRY DRESSING PLANTS	432	A	SIMPLE SLAUGHTERHOUSE	1	1	1
2016	2015	POULTRY DRESSING PLANTS	432	C	LOW-PROCESSING PACKING HOUSE	1	1	3
2016	2015	POULTRY DRESSING PLANTS	432	D	HIGH-PROCESSING PACKING HOUSE	1	1	4
2017	2015	POULTRY AND EGG PROCESSING	432	E	SMALL PROCESSOR	1	1	1
2017	2015	POULTRY AND EGG PROCESSING	432	F	MEAT CUTTER	1	1	2
2017	2015	POULTRY AND EGG PROCESSING	432	G	SAUSAGE AND LUNCHEON MEATS PROCESSOR	1	1	3
2017	2015	POULTRY AND EGG PROCESSING	432	H	HAM PROCESSOR	1	1	4
2017	2015	POULTRY AND EGG PROCESSING	432	I	CANNED MEATS PROCESSOR	1	1	5
2021	2021	CREAMERY BUTTER	405	D	BUTTER	1	1	0
2022	2022	CHEESE, NATURAL AND PROCESSED	405	F	NATURAL AND PROCESSED CHEESE	1	1	0
2023	2023	CONDENSED AND EVAPORATED MILK	405	I	CONDENSED MILK	1	1	1
2023	2023	CONDENSED AND EVAPORATED MILK	405	J	DRY MILK	1	1	2
2023	2023	CONDENSED AND EVAPORATED MILK	405	K	CONDENSED WHEY	1	1	3
2023	2023	CONDENSED AND EVAPORATED MILK	405	L	DRY WHEY	1	1	4
2024	2024	ICE CREAM AND FROZEN DESSERTS	405	H	ICE CREAM, FROZEN DESSERTS, NOVELTIES	1	1	0
2026	2026	FLUID MILK	405	B	FLUID PRODUCTS	1	1	1
2026	2026	FLUID MILK	405	C	CULTURED PRODUCTS	1	1	2
2026	2026	FLUID MILK	405	E	COTTAGE CHEESE AND CULTURED CREAM CHEESE	1	1	3
2026	2026	FLUID MILK	405	G	FLUID MIX FOR ICE CREAM, OTHER DESSERTS	1	1	4
2032	2091	CANNED SPECIALTIES				1	1	0
2032	2032	CANNED SPECIALTIES	407	H	CANNED AND MISC. SPECIALTIES	1	1	0
2033	2033	CANNED FRUITS, VEGETABLES, PRESERVES, JA	407	A	APPLE JUICE	1	1	1
2033	2033	CANNED FRUITS, VEGETABLES, PRESERVES, JA	407	B	APPLE PRODUCTS	1	1	2
2033	2033	CANNED FRUITS, VEGETABLES, PRESERVES, JA	407	C	CITRUS PRODUCTS	1	1	3
2033	2033	CANNED FRUITS, VEGETABLES, PRESERVES, JA	407	F	CANNED AND PRESERVED FRUITS	1	1	4
2033	2033	CANNED FRUITS, VEGETABLES, PRESERVES, JA	407	G	CANNED AND PRESERVED VEGETABLES	1	1	5
2033	2033	CANNED FRUITS, VEGETABLES, PRESERVES, JA	407	H	CANNED AND PRESERVED SPECIALTIES	1	1	6
2034	2048	DRIED & DEHYDRATED FRUITS, VEGETABLES &		NR		1	1	99
2034	2034	DRIED & DEHYDRATED FRUITS, VEGETABLES &	407	E	DEHYDRATED POTATO PRODUCTS	1	1	1
2034	2034	DRIED & DEHYDRATED FRUITS, VEGETABLES &	407	F	CANNED AND PRESERVED FRUITS	1	1	2
2034	2034	DRIED & DEHYDRATED FRUITS, VEGETABLES &	407	G	CANNED AND PRESERVED VEGETABLES	1	1	3
2035	2035	PICKLED FRUITS & VEG., VEG. SAUCES & SEA	407	F	CANNED AND PRESERVED FRUITS	1	1	1
2035	2035	PICKLED FRUITS & VEG., VEG. SAUCES & SEA	407	G	CANNED AND PRESERVED VEGETABLES	1	1	2
2035	2035	PICKLED FRUITS & VEG., VEG. SAUCES & SEA	407	H	CANNED AND MISC SPECIALTIES	1	1	3
2037	2037	FROZEN FRUITS, FRUIT JUICES & VEGETABLES	407	A	APPLE JUICES	1	1	1
2037	2037	FROZEN FRUITS, FRUIT JUICES & VEGETABLES	407	G	CANNED AND PRESERVED VEGETABLES	1	1	6
2037	2037	FROZEN FRUITS, FRUIT JUICES & VEGETABLES	407	C	CITRUS PRODUCTS	1	1	3
2037	2037	FROZEN FRUITS, FRUIT JUICES & VEGETABLES	407	D	FROZEN POTATO PRODUCTS	1	1	4
2037	2037	FROZEN FRUITS, FRUIT JUICES & VEGETABLES	407	F	CANNED AND PRESERVED FRUITS	1	1	5
2037	2037	FROZEN FRUITS, FRUIT JUICES & VEGETABLES	407	B	APPLE PRODUCTS	1	1	2
2038	2038	FROZEN SPECIALTIES	407	H	CANNED AND MISCELLANEOUS SPECIALTIES	1	1	1
2038	2053	FROZEN SPECIALTIES	407	H	CANNED AND MISCELLANEOUS SPECIALTIES	1	1	2
2041	2041	FLOUR AND OTHER GRAIN MILL PRODUCTS	406	B	CORN DRY MILLING	1	1	1

APPENDIX A
SIC Code Cross Reference
and Total and Human Health Toxicity Number

1972/ 1977	1987		CFR			Human	Total	Industr
SIC	SIC	1987	CFR	Sub-	Sub-part title	Health	Toxicity	Subcat
Code	Code	Title	Part	Part		Number	Number	Number
2041	2041	FLOUR AND OTHER GRAIN MILL PRODUCTS	406	C	NORMAL WHEAT FLOUR MILLING	1	1	2
2041	2041	FLOUR AND OTHER GRAIN MILL PRODUCTS	406	D	BULGUR WHEAT FLOUR MILLING	1	1	3
2043	2043	CEREAL BREAKFAST FOODS	406	H	HOT CEREAL	1	1	1
2043	2043	CEREAL BREAKFAST FOODS	406	I	READY-TO-EAT CEREAL	1	1	2
2044	2044	RICE MILLING	406	E	NORMAL RICE MILLING	1	1	1
2044	2044	RICE MILLING	406	F	PARBOILED RICE PROCESSING	1	1	2
2045	2045	BLENDED AND PREPARED FLOUR		NR		1	1	99
2046	2046	WET CORN MILLING	406	A	CORN WET MILLING	1	1	1
2046	2046	WET CORN MILLING	406	J	WHEAT STARCH AND GLUTEN	1	1	2
2047	2047	DOG, CAT AND OTHER PET FOOD	406	G	ANIMAL FEED	1	1	1
2047	2048	DOG, CAT, AND OTHER PET FOOD	406	G	ANIMAL FEED	1	1	2
2048	2048	PREPARED FEEDS & FEED INGREDIENTS FOR AN	406	G	ANIMAL FEED	1	1	0
2051	2051	BREAD & OTHER BAKERY PRODUCTS, EXCEPT CO		NR		1	1	99
2052	2052	COOKIES AND CRACKERS		NR		1	1	99
2061	2061	CANE SUGAR, EXCEPT REFINING ONLY	409	D	LOUISIANA RAW CANE SUGAR PROCESSING	1	1	1
2061	2061	CANE SUGAR, EXCEPT REFINING ONLY	409	E	FLORIDA & TEXAS RAW CANESUGAR PROCESSING	1	1	2
2061	2061	CANE SUGAR, EXCEPT REFINING ONLY	409	F	HILO-HANAKUA/HAWAII CANESUGAR PROCESSING	1	1	3
2061	2061	CANE SUGAR, EXCEPT REFINING ONLY	409	G	HAWAIIAN RAW CANE SUGAR PROCESSING	1	1	4
2061	2061	CANE SUGAR, EXCEPT REFINING ONLY	409	H	PUERTO RICAN RAW CANE SUGAR PROCESSING	1	1	5
2062	2062	CANE SUGAR REFINING	409	B	CRYSTALLINE CANE SUGAR REFINING	1	1	1
2062	2062	CANE SUGAR REFINING	409	C	LIQUID CANE SUGAR REFINING	1	1	2
2063	2063	BEET SUGAR	409	A	BEET SUGAR PROCESSING	1	1	0
2065	2068	CANDY & OTHER CONFECTIONARY PRODUCTS		NR		1	1	99
2065	2064	CANDY & OTHER CONFECTIONARY PRODUCTS		NR		1	1	99
2066	2066	CHOCOLATE AND COCOA PRODUCTS		NR		1	1	99
2067	2067	CHEWING GUM		NR		1	1	99
2074	2074	COTTONSEED OIL MILLS		NR		1	1	99
2075	2075	SOYBEAN OIL MILLS		NR		1	1	99
2076	2076	VEG. OIL MILLS, EXCEPT CORN, COTTONSEED		NR		1	1	99
2077	2077	ANIMAL AND MARINE FATS AND OILS	408	O	FISH MEAL PROCESSING	1	1	0
2077	2077	ANIMAL AND MARINE FATS AND OILS		NR		1	1	99
2079	2079	SHORTENING, TABLE OILS, MARGARINE & OTHE		NR		1	1	99
2082	2082	MALT BEVERAGES		NR		1	1	99
2083	2083	MALT		NR		1	1	99
2084	2084	WINES, BRANDY AND BRANDY SPIRITS		NR		1	1	99
2085	2085	DISTILLED, RECTIFIED AND BLENDED LIQUORS		NR		1	1	99
2086	2086	BOTTLED & CANNED SOFT DRINKS & CARBONATE		NR		1	1	99
2087	2087	FLAVORING EXTRACTS & FLAVORING SYRUPS, N		NR		1	1	99
2091	2091	CANNED AND CURED FISH AND SEAFOODS	408	M	BREADED SHRIMP PROC/CONTIGUOUS STATES	1	1	12
2091	2091	CANNED AND CURED FISH AND SEAFOODS	408	R	W COAST HAND-BUTCHERED SALMON PROCESSING	1	1	16
2091	2091	CANNED AND CURED FISH AND SEAFOODS	408	B	CONVENTIONAL BLUE CRAB PROCESSING	1	1	1
2091	2091	CANNED AND CURED FISH AND SEAFOODS	408	C	MECHANIZED BLUE CRAB PROCESSING	1	1	2
2091	2091	CANNED AND CURED FISH AND SEAFOODS	408	D	NON-REMOTE ALASKAN CRAB MEAT PROCESSING	1	1	3
2091	2091	CANNED AND CURED FISH AND SEAFOODS	408	E	REMOTE ALASKAN CRAB MEAT PROCESSING	1	1	4
2091	2091	CANNED AND CURED FISH AND SEAFOODS	408	F	NON-REMOTE ALASKAN CRAB/SECTION PROCESS	1	1	5
2091	2091	CANNED AND CURED FISH AND SEAFOODS	408	G	REMOTE ALASKAN CRAB/SECTION PROCESSING	1	1	6
2091	2091	CANNED AND CURED FISH AND SEAFOODS	408	H	DUNG & TANNER CRAB PROCESS/CONTIG STATES	1	1	7
2091	2091	CANNED AND CURED FISH AND SEAFOODS	408	I	NON-REMOTE ALASKAN SHRIMP PROCESSING	1	1	8
2091	2091	CANNED AND CURED FISH AND SEAFOODS	408	W	HAND-SHUCKED CLAM PROCESSING	1	1	21
2091	2091	CANNED AND CURED FISH AND SEAFOODS	408	X	MECHANIZED CLAM PROCESSING	1	1	22
2091	2091	CANNED AND CURED FISH AND SEAFOODS	408	K	NORTHERN SHRIMP PROCESSING/CONTIG STATES	1	1	10
2091	2091	CANNED AND CURED FISH AND SEAFOODS	408	Y	PAC COAST HAND-SHUCKED OYSTER PROCESSING	1	1	23
2091	2091	CANNED AND CURED FISH AND SEAFOODS	408	N	TUNA PROCESSING	1	1	13
2091	2091	CANNED AND CURED FISH AND SEAFOODS	408	Z	AT/GLF COAST HAND-SHUCKED OYSTER PROCESS	1	1	24

APPENDIX A
SIC Code Cross Reference
and Total and Human Health Toxicity Number

1977/	1987		CFR		Human			
SIC	SIC	1987	CFR	Sub-	Sub-part title	Health	Total	Industr
Code	Code	Title	Part	Part		Toxicity	Toxicity	Subcat
						Number	Number	Number
2091	2091	CANNED AND CURED FISH AND SEAFOODS	408	Q	ALASKAN MECHANIZED SALMON PROCESSING	1	1	15
2091	2091	CANNED AND CURED FISH AND SEAFOODS	408	AA	STEAMED AND CANNED OYSTER PROCESSING	1	1	25
2091	2091	CANNED AND CURED FISH AND SEAFOODS	408	T	ALASKAN BOTTOM FISH PROCESSING	1	1	18
2091	2091	CANNED AND CURED FISH AND SEAFOODS	408	AB	SARDINE PROCESSING	1	1	26
2091	2091	CANNED AND CURED FISH AND SEAFOODS	408	V	NON-ALASKAN MECH BOTTOM FISH PROCESSING	1	1	20
2091	2091	CANNED AND CURED FISH AND SEAFOODS	408	AC	ALASKAN SCALLOP PROCESSING	1	1	27
2091	2091	CANNED AND CURED FISH AND SEAFOODS	408	L	SO NON-BREADED SHRIMP PROCESS/CONTG STS	1	1	11
2091	2091	CANNED AND CURED FISH AND SEAFOODS	408	S	WEST COAST MECHANIZED SALMON PROCESSING	1	1	17
2091	2091	CANNED AND CURED FISH AND SEAFOODS	408	U	NON-ALASKAN CONV BOTTOM FISH PROCESSING	1	1	19
2091	2091	CANNED AND CURED FISH AND SEAFOODS	408	J	REMOTE ALASKAN SHRIMP PROCESSING	1	1	9
2091	2091	CANNED AND CURED FISH AND SEAFOODS	408	P	ALASKAN HAND-BUTCHERED SALMON PROCESSING	1	1	14
2091	2091	CANNED AND CURED FISH AND SEAFOODS	408	AD	NON-ALASKAN SCALLOP PROCESSING	1	1	28
2091	2091	CANNED AND CURED FISH AND SEAFOODS	408	AE	ALASKAN HERRING FILLET PROCESSING	1	1	29
2091	2091	CANNED AND CURED FISH AND SEAFOODS	408	AF	NON-ALASKAN HERRING FILLET PROCESSING	1	1	30
2091	2091	CANNED AND CURED FISH AND SEAFOODS	408	AG	ABALONE PROCESSING	1	1	31
2092	2092	FRESH OR FROZEN PACKAGED FISH AND SEAFOODS	408	A	FARM RAISED CATFISH PROCESSING	1	1	1
2092	2092	FRESH OR FROZEN PACKAGED FISH AND SEAFOODS	408	Y	PAC COAST HAND-SHUCKED OYSTER PROCESSING	1	1	24
2092	2092	FRESH OR FROZEN PACKAGED FISH AND SEAFOODS	408	Z	AT/GLF CST HND-SHUCKED OYSTER PROCESSING	1	1	25
2092	2092	FRESH OR FROZEN PACKAGED FISH AND SEAFOODS	408	C	MECHANIZED BLUE CRAB PROCESSING	1	1	3
2092	2092	FRESH OR FROZEN PACKAGED FISH AND SEAFOODS	408	AB	SARDINE PROCESSING	1	1	26
2092	2092	FRESH OR FROZEN PACKAGED FISH AND SEAFOODS	408	E	REMOTE ALASKAN CRAB MEAT PROCESSING	1	1	5
2092	2092	FRESH OR FROZEN PACKAGED FISH AND SEAFOODS	408	AC	ALASKAN SCALLOP PROCESSING	1	1	27
2092	2092	FRESH OR FROZEN PACKAGED FISH AND SEAFOODS	408	G	REMOTE ALA WHOLE CRAB/SECTION PROCESSING	1	1	7
2092	2092	FRESH OR FROZEN PACKAGED FISH AND SEAFOODS	408	AD	NON-ALASKAN SCALLOP PROCESSING	1	1	28
2092	2092	FRESH OR FROZEN PACKAGED FISH AND SEAFOODS	408	I	NON-REMOTE ALASKAN SHRIMP PROCESSING	1	1	9
2092	2092	FRESH OR FROZEN PACKAGED FISH AND SEAFOODS	408	AE	ALASKAN HERRING FILLET PROCESSING	1	1	29
2092	2092	FRESH OR FROZEN PACKAGED FISH AND SEAFOODS	408	K	NORTHERN SHRIMP PROCESSING/CONTIG STATES	1	1	11
2092	2092	FRESH OR FROZEN PACKAGED FISH AND SEAFOODS	408	AF	NON-ALASKAN HERRING FILLET PROCESSING	1	1	30
2092	2092	FRESH OR FROZEN PACKAGED FISH AND SEAFOODS	408	M	BREADED SHRIMP PROCESSING/CONTIG STATES	1	1	13
2092	2092	FRESH OR FROZEN PACKAGED FISH AND SEAFOODS	408	AG	ABALONE PROCESSING	1	1	31
2092	2092	FRESH OR FROZEN PACKAGED FISH AND SEAFOODS	408	Q	ALASKAN MECHANIZED SALMON PROCESSING	1	1	16
2092	2092	FRESH OR FROZEN PACKAGED FISH AND SEAFOODS	408	P	ALASKAN HAND-BUTCHERED SALMON PROCESSING	1	1	15
2092	2092	FRESH OR FROZEN PACKAGED FISH AND SEAFOODS	408	S	WEST COAST MECHANIZED SALMON PROCESSING	1	1	18
2092	2092	FRESH OR FROZEN PACKAGED FISH AND SEAFOODS	408	U	NON-ALASKAN CONV BOTTOM FISH PROCESSING	1	1	20
2092	2092	FRESH OR FROZEN PACKAGED FISH AND SEAFOODS	408	H	DUNG & TANNER CRAB PROCESS/CONTIG STATES	1	1	8
2092	2092	FRESH OR FROZEN PACKAGED FISH AND SEAFOODS	408	J	REMOTE ALASKAN SHRIMP PROCESSING	1	1	10
2092	2092	FRESH OR FROZEN PACKAGED FISH AND SEAFOODS	408	X	MECHANIZED CLAM PROCESSING	1	1	23
2092	2092	FRESH OR FROZEN PACKAGED FISH AND SEAFOODS	408	D	NON-REMOTE ALASKAN CRAB MEAT PROCESSING	1	1	4
2092	2092	FRESH OR FROZEN PACKAGED FISH AND SEAFOODS	408	F	NON-REMOTE WHOLE CRAB/SECTION PROCESSING	1	1	6
2092	2092	FRESH OR FROZEN PACKAGED FISH AND SEAFOODS	408	W	HAND-SHUCKED CLAM PROCESSING	1	1	22
2092	2092	FRESH OR FROZEN PACKAGED FISH AND SEAFOODS	408	B	CONVENTIONAL BLUE CRAB PROCESSING	1	1	2
2092	2092	FRESH OR FROZEN PACKAGED FISH AND SEAFOODS	408	L	S NON-BREAD SHRIMP PROCESS/CONTIG STATES	1	1	12
2092	2092	FRESH OR FROZEN PACKAGED FISH AND SEAFOODS	408	N	TUNA PROCESSING	1	1	14
2092	2092	FRESH OR FROZEN PACKAGED FISH AND SEAFOODS	408	R	W COAST HAND BUTCHERED SALMON PROCESSING	1	1	17
2092	2092	FRESH OR FROZEN PACKAGED FISH AND SEAFOODS	408	T	ALASKAN BOTTOM FISH PROCESSING	1	1	19
2092	2092	FRESH OR FROZEN PACKAGED FISH AND SEAFOODS	408	V	NON-ALASKAN MECH BOTTOM FISH PROCESSING	1	1	21
2095	2095	ROASTED COFFEE		NR		1	1	99
2097	2097	MANUFACTURED ICE		NR		1	1	99
2098	2098	MACARONI, SPAGHETTI, VERMICELLI AND NOOD		NR		1	1	99
2099	2099	FOOD PREPARATIONS, NEC		NR		1	1	99
2099	2096	FOOD PREPARATIONS, NEC		NR		1	1	99
2099	2068	FOOD PREPARATIONS, NEC		NR		1	1	99
2099	2066	FOOD PREPARATIONS, NEC		NR		1	1	99
2111	2111	CIGARETTES		NR		1	1	99

APPENDIX A
SIC Code Cross Reference
and Total and Human Health Toxicity Number

1972/ 1977	1987		CFR			Human	Total	Industr
SIC	SIC	1987	CFR	Sub-	Sub-part title	Health	Toxicity	Subcat
Code	Code	Title	Part	Part		Number	Number	Number
2121	2121	CIGARS		NR		1	1	99
2131	2131	TOBACCO (CHEWING AND SMOKING) AND SNUFF		NR		1	1	99
2141	2141	TOBACCO STEMMING AND REDRYING		NR		1	1	99
2211	2211	BROAD WOVEN FABRIC MILLS, COTTON	410	C	LOW WATER USE PROCESSING	2	9	1
2211	2211	BROAD WOVEN FABRIC MILLS, COTTON	410	C	LOW WATER USE PROCESSING	2	9	2
2211	2211	BROAD WOVEN FABRIC MILLS, COTTON	410	D	WOVEN FABRIC FINISHING	9	10	3
2221	2221	BROAD WOVEN FABRIC MILLS, SYNTHETICS	410	D	WOVEN FABRIC FINISHING	9	10	3
2221	2221	BROAD WOVEN FABRIC MILLS, SYNTHETICS	410	C	LOW WATER USE PROCESSING	2	9	2
2221	2221	BROAD WOVEN FABRIC MILLS, SYNTHETICS	410	C	LOW WATER USE PROCESSING	2	9	1
2231	2231	BROAD WOVEN FABRIC MILLS, WOOL	410	B	WOOL FINISHING	9	10	2
2231	2231	BROAD WOVEN FABRIC MILLS, WOOL	410	C	LOW WATER USE PROCESSING	2	9	1
2241	2241	NARROW FABRICS AND OTHER SMALLWARES MILL	410	C	LOW WATER USE PROCESSING	2	9	1
2241	2241	NARROW FABRICS AND OTHER SMALLWARES MILL	410	C	LOW WATER USE PROCESSING	2	9	2
2251	2251	WOMEN'S FULL LENGTH & KNEE LENGTH HOSIER	410	E	KNIT FABRIC FINISHING	9	10	0
2251	2251	WOMEN'S FULL LENGTH & KNEE LENGTH HOSIER		NR	NO FINISHING	1	1	99
2252	2252	HOSIERY, EXC WOMEN'S FULL LENGTH & KNEE	410	E	KNIT FABRIC FINISHING	9	10	0
2252	2252	HOSIERY, EXC WOMEN'S FULL LENGTH & KNEE		NR	NO FINISHING	1	1	99
2253	2253	KNIT OUTERWEAR MILLS	410	E	KNIT FABRIC FINISHING	9	10	0
2253	2253	KNIT OUTERWEAR MILLS		NR	NO FINISHING	1	1	99
2254	2254	KNIT UNDERWEAR MILLS	410	E	KNIT FABRIC FINISHING	9	10	0
2254	2254	KNIT UNDERWEAR MILLS		NR	NO FINISHING	1	1	99
2257	2257	CIRCULAR KNIT FABRIC MILLS	410	E	KNIT FABRIC FINISHING	9	10	0
2257	2257	CIRCULAR KNIT FABRIC MILLS		NR	NO FINISHING	1	1	99
2258	2258	WARP KNIT FABRIC MILLS	410	E	KNIT FABRIC FINISHING	9	10	0
2258	2258	WARP KNIT FABRIC MILLS		NR	NO FINISHING	1	1	99
2259	2259	KNITTING MILLS, NEC	410	E	KNIT FABRIC FINISHING	9	10	0
2259	2259	KNITTING MILLS, NEC		NR	NO FINISHING	1	1	99
2261	2261	FINISHERS OF BROAD WOVEN FABRICS OF COTT	410	D	WOVEN FABRIC FINISHING	9	10	0
2262	2262	FINISHERS OF BROAD WOVEN FABRICS/MAN-MA	410	D	WOVEN FABRIC FINISHING	9	10	0
2269	2269	FINISHERS OF TEXTILES, NEC	410	D	WOVEN FABRIC FINISHING	9	10	1
2269	2269	FINISHERS OF TEXTILES, NEC	410	G	STOCK & YARN FINISHING	7	9	2
2271	2273	WOVEN CARPETS AND RUGS	410	C	LOW WATER USE PROCESSING	2	9	2
2271	2273	WOVEN CARPETS AND RUGS	410	F	CARPET FINISHING	1	8	1
2272	2273	TUFTED CARPETS AND RUGS	410	C	LOW WATER USE PROCESSING	2	9	1
2272	2273	TUFTED CARPETS AND RUGS	410	F	CARPET FINISHING	1	8	2
2279	2273	CARPETS AND RUGS, NEC	410	F	CARPET FINISHING	1	8	1
2279	2273	CARPETS AND RUGS, NEC	410	C	LOW WATER USE PROCESSING	2	9	2
2281	2281	YARN SPINNING MILLS:COTTON, MAN-MADE FIB	410	C	LOW WATER USE PROCESSING	2	9	2
2281	2281	YARN SPINNING MILLS:COTTON, MAN-MADE FIB	410	C	LOW WATER USE PROCESSING	2	9	1
2282	2282	YARN TEXTURIZING, THROWING, TWISTING & W	410	C	LOW WATER USE PROCESSING	2	9	1
2282	2282	YARN TEXTURIZING, THROWING, TWISTING & W	410	C	LOW WATER USE PROCESSING	2	9	2
2283	2284	YARN MILLS, WOOL, INCLUDING CARPET & RUG	410	C	LOW WATER USE PROCESSING	2	9	1
2283	2281	YARN MILLS, WOOL, INCLUDING CARPET & RUG	410	C	LOW WATER USE PROCESSING	2	9	2
2283	2282	YARN MILLS, WOOL, INCLUDING CARPET AND R	410	C	LOW WATER USE PROCESSING	2	9	3
2283	2284	YARN MILLS, WOOL, INCLUDING CARPET AND R	410	G	STOCK AND YARN FINISHING	7	9	4
2284	2284	THREAD MILLS	410	C	LOW WATER USE PROCESSING	2	9	1
2284	2284	THREAD MILLS	410	G	STOCK AND YARN FINISHING	7	9	2
2291	2299	FELT GOODS, EXC WOVEN FELTS AND HATS	410	I	FELTED FABRIC PROCESSING	1	5	0
2292	2258	LACE GOODS	410	C	LOW WATER USE PROCESSING	2	9	1
2292	2258	LACE GOODS	410	E	KNIT FABRIC FINISHING	9	10	2
2293	2299	PADDINGS AND UPHOLSTERY FILLING		NR	PADDING AND UPHOLSTERY FILLING	1	1	99
2294	2299	PROCESSED WASTE AND RECOVERED FIBERS AND	410	C	LOW WATER USE PROCESSING	2	9	0
2295	2295	COATED FABRICS, NOT RUBBERIZED	410	C	LOW WATER USE PROCESSING	2	9	0
2296	2296	TIRE CORD AND FABRIC	410	C	LOW WATER USE PROCESSING	2	9	0

APPENDIX A
SIC Code Cross Reference
and Total and Human Health Toxicity Number

1972/ 1977	1987		CFR			Human Health Toxicity Number	Total Toxicity Number	Industr Subcat Number
SIC Code	SIC Code	1987 Title	CFR Part	Sub- Part	Sub-part title			
2297	2297	NONWOVEN FABRICS	410	M	NONWOVEN MANUFACTURING	1	8	0
2298	2298	CORDAGE AND TWINE	410	C	LOW WATER USE PROCESSING	2	9	0
2299	2299	TEXTILE GOODS NEC	410	A	WOOL SCOURING	10	10	1
2299	2299	TEXTILE GOODS NEC	410	C	LOW WATER USE PROCESSING	2	9	2
2311	2311	MEN'S, YOUTH'S, BOY'S SHIRTS (EXCEPT WOR		NR		1	1	99
2321	2321	MEN'S, YOUTH'S, BOY'S SHIRTS (EXCEPT WOR		NR		1	1	99
2321	2322	MEN'S, YOUTH'S, BOY'S SHIRTS (EXCEPT WOR		NR		1	1	99
2322	2322	MEN'S, YOUTH'S & BOY'S UNDERWEAR		NR		1	1	99
2323	2323	MEN'S, YOUTH'S & BOY'S NECKWEAR		NR		1	1	99
2327	2325	MEN'S, YOUTH'S & BOY'S SEPARATE TROUSERS		NR		1	1	99
2328	2325	MEN'S, YOUTH'S & BOY'S WORK CLOTHING		NR		1	1	99
2328	2326	MEN'S, YOUTH'S & BOY'S WORK CLOTHING		NR		1	1	99
2329	2329	MEN'S, YOUTH'S & BOY'S CLOTHING, NEC		NR		1	1	99
2331	2331	WOMEN'S, MISSES & JUNIORS' BLOUSES, WAIS		NR		1	1	99
2335	2335	WOMEN'S, MISSES' & JUNIORS' DRESSES		NR		1	1	99
2337	2337	WOMEN'S, MISSES' & JUNIORS' SUITS, SHIRT		NR		1	1	99
2339	2339	WOMEN'S, MISSES' & JUNIORS' OUTERWEAR, W		NR		1	1	99
2341	2341	WOMEN'S, MISSES', CHILDREN'S & INFANTS'		NR		1	1	99
2342	2342	BRASSIERS, GIRDLES & ALLIED GARMENTS		NR		1	1	99
2351	2353	MILLINERY		NR		1	1	99
2352	2353	HATS & COATS, EXCEPT MILLINERY		NR		1	1	99
2361	2361	GIRL'S, CHILDREN'S & INFANT'S DRESSES, B		NR		1	1	99
2363	2369	GIRL'S, CHILDREN'S & INFANT'S COATS & SU		NR		1	1	99
2369	2369	GIRL'S, CHILDREN'S & INFANT'S OUTERWEAR,		NR		1	1	99
2371	2371	FUR GOODS		NR		1	1	99
2381	2381	DRESS & WORK GLOVES, EXCEPT KNIT & ALL-L		NR		1	1	99
2384	2384	ROBES & DRESSING GOWNS		NR		1	1	99
2385	2385	RAINCOATS & OTHER WATERPROOF OUTER GARME		NR		1	1	99
2386	2386	LEATHER & SHEEP-LINED CLOTHING		NR		1	1	99
2387	2387	APPAREL BELTS		NR		1	1	99
2389	2389	APPAREL & ACCESSORIES, NEC		NR		1	1	99
2391	2391	CURTAINS & DRAPERIES		NR		1	1	99
2392	2392	HOUSEFURNISHINGS, EXCEPT CURTAINS & DRAP		NR		1	1	99
2393	2393	TEXTILE BAGS		NR		1	1	99
2394	2394	CANVAS & RELATED PRODUCTS		NR		1	1	99
2395	2395	PLEATING, DECORATIVE & NOVELTY STITCHING		NR		1	1	99
2396	2396	AUTOMOTIVE TRIMMINGS, APPAREL FINDINGS		NR		1	1	99
2397	2397	SCHIFFLI MACHINE EMBROIDERIES		NR		1	1	99
2399	2399	FABRICATED TEXTILE PRODUCTS, NEC		NR		1	1	99
2411	2411	LOGGING CAMPS AND LOGGING CONTRACTORS	429	I	WET STORAGE	1	1	1
2411	2411	LOGGING CAMPS AND LOGGING CONTRACTORS	429	U	LOG WASHING	1	1	2
2411	2411	LOGGING CAMPS AND LOGGING CONTRACTORS		NR		1	1	99
2421	2411	SAWMILLS & PLANING MILLS, GENERAL				3	3	1
2421	2421	SAWMILLS & PLANING MILLS, GENERAL	429	A	BARKING	1	1	2
2421	2421	SAWMILLS & PLANING MILLS, GENERAL	429	K	SAWMILLS AND PLANING MILLS	1	1	3
2421	2421	SAWMILLS & PLANING MILLS, GENERAL	429	L	FINISHING	1	1	4
2426	2426	HARDWOOD DIMENSION & FLOORING MILLS	429	A	BARKING	1	1	1
2426	2426	HARDWOOD DIMENSION & FLOORING MILLS	429	I	WET STORAGE	1	1	2
2426	2426	HARDWOOD DIMENSION & FLOORING MILLS	429	J	LOG WASHING	1	1	3
2426	2426	HARDWOOD DIMENSION & FLOORING MILLS	429	K	SAWMILLS AND PLANING MILLS	1	1	4
2426	2426	HARDWOOD DIMENSION & FLOORING MILLS	429	L	FINISHING	1	1	5
2429	2429	SPECIAL PRODUCT SAWMILLS NEC	429	I	WET STORAGE	1	1	1
2429	2429	SPECIAL PRODUCT SAWMILLS NEC	429	J	LOG WASHING	1	1	2
2429	2429	SPECIAL PRODUCT SAWMILLS NEC	429	K	SAWMILLS AND PLANING MILLS	1	1	3

APPENDIX A
SIC Code Cross Reference
and Total and Human Health Toxicity Number

1972/ 1977	1987		CFR	Sub-	Sub-part title	Human	Total	Industr
SIC	SIC	1987	CFR	Sub-		Health	Toxicity	Subcat
Code	Code	Title	Part	Part		Number	Number	Number
2429	2429	SPECIAL PRODUCT SAWMILLS NEC	429	L	MILLWORK	1	1	4
2431	2431	MILLWORK	429	K	SAWMILLS AND PLANING MILLS	1	1	1
2431	2431	MILLWORK	429	L	MILLWORK	1	1	2
2434	2434	WOOD KITCHEN CABINETS	429	O	WOOD FURN & FIXTURE PROD W/O WATER	1	1	1
2434	2434	WOOD KITCHEN CABINETS	429	P	WOOD FURN & FIXTURE PRODUCTION W/WATER	1	1	2
2435	2435	HARDWOOD VENEER AND PLYWOOD	429	A	BARKING	1	1	1
2435	2435	HARDWOOD VENEER AND PLYWOOD	429	B	VENEER	1	1	3
2435	2435	HARDWOOD VENEER AND PLYWOOD	429	C	PLYWOOD	1	1	2
2435	2435	HARDWOOD VENEER AND PLYWOOD	429	I	WET STORAGE	1	1	4
2435	2435	HARDWOOD VENEER AND PLYWOOD	429	J	LOG WASHING	1	1	5
2436	2436	SOFTWOOD VENEER AND PLYWOOD	429	A	BARKING	1	1	1
2436	2436	SOFTWOOD VENEER AND PLYWOOD	429	B	VENEER	1	1	3
2436	2436	SOFTWOOD VENEER AND PLYWOOD	429	C	PLYWOOD	1	1	2
2436	2436	SOFTWOOD VENEER AND PLYWOOD	429	I	WET STORAGE	1	1	4
2436	2436	SOFTWOOD VENEER AND PLYWOOD	429	J	LOG WASHING	1	1	5
2439	2439	STRUCTURAL WOOD MEMBERS, NEC		NR		1	1	99
2441	2441	NAILED & LOCK CORNER WOOD BOXES & SHOOK		NR		1	1	99
2448	2448	WOOD PALLETS AND SKIDS		NR		1	1	99
2449	2449	WOOD CONTAINERS NEC	429	K	SAWMILLS & PLANING MILLS	1	1	0
2451	2451	MOBILE HOMES		NR		1	1	99
2452	2452	PREFABRICATED WOOD BUILDINGS AND COMPONE		NR		1	1	99
2491	2491	WOOD PRESERVING	429	A	BARKING	10	10	4
2491	2491	WOOD PRESERVING	429	J	LOG WASHING	10	10	6
2491	2491	WOOD PRESERVING	429	G	WOOD PRESERVING-STEAM	10	10	1
2491	2491	WOOD PRESERVING	429	H	WOOD PRESERVING-BOULTONIZING	10	10	2
2491	2491	WOOD PRESERVING	429	I	WET STORAGE	10	10	5
2491	2491	WOOD PRESERVING	429	F	WOOD PRESERVING	10	10	3
2492	2493	PARTICLEBOARD	429	M	PARTICLEBOARD	3	3	0
2499	2493	WOOD PRODUCTS NEC		NR		3	3	99
2499	2499	WOOD PRODUCTS, NEC	429	M	PARTICLEBOARD	1	1	1
2499	2499	WOOD PRODUCTS, NEC	429	A	BARKING	1	1	2
2499	2499	WOOD PRODUCTS, NEC	429	D	HARDBOARD - DRY PROCESS	1	1	3
2499	2499	WOOD PRODUCTS, NEC	429	E	HARDBOARD - WET PROCESS	1	7	4
2499	2499	WOOD PRODUCTS, NEC	429	I	WET STORAGE	1	1	5
2499	2499	WOOD PRODUCTS, NEC	429	J	LOG WASHING	1	1	6
2499	2499	WOOD PRODUCTS, NEC	429	L	FINISHING	1	1	7
2511	2511	WOOD HOUSEHOLD FURNITURE, EXCEPT UPHOLST	429	O	WOOD FURN & FIXTURE PROD W/O WATER	1	1	1
2511	2511	WOOD HOUSEHOLD FURNITURE, EXCEPT UPHOLST	429	P	WOOD FURN & FIXTURE PROD W/ WATER	1	1	2
2512	2512	WOOD HOUSEHOLD FURNITURE, UPHOLSTERED	429	O	WOOD FURN & FIXTURE PROD W/O WATER	1	1	1
2512	2512	WOOD HOUSEHOLD FURNITURE, UPHOLSTERED	429	P	WOOD FURN & FIXTURE PROD W/ WATER	1	1	2
2514	2514	METAL HOUSEHOLD FURNITURE	433	A	METAL FINISHING	1	9	1
2514	2514	METAL HOUSEHOLD FURNITURE		NR	NO ELECTROPLATING	1	1	99
2515	2515	MATTRESSES AND BEDSPRINGS		NR		1	1	99
2517	2517	WOOD TV, RADIO, PHONOGRAPH & SEWING MACH	429	O	WOOD FURN & FIXTURE PROD W/O WATER	1	1	1
2517	2517	WOOD TV, RADIO, PHONOGRAPH & SEWING MACH	429	P	WOOD FURN & FIXTURE PROD W/ WATER	1	1	2
2519	2519	HOUSEHOLD FURNITURE, NEC	429	P	WOOD FURN & FIXTURE PROD W/ WATER	1	1	2
2519	2519	HOUSEHOLD FURNITURE, NEC	429	O	WOOD FURN & FIXTURE PROD W/O WATER	1	1	1
2521	2521	WOOD OFFICE FURNITURE	429	O	WOOD FURN & FIXTURE PROD W/O WATER	1	1	1
2521	2521	WOOD OFFICE FURNITURE	429	P	WOOD FURN & FIXTURE PROD W/ WATER	1	1	2
2522	2522	METAL OFFICE FURNITURE	433	A	METAL FINISHING	1	9	0
2522	2522	METAL OFFICE FURNITURE		NR	NO ELECTROPLATING	1	1	99
2531	2531	PUBLIC BUILDING AND RELATED FURNITURE	429	O	WOOD FURN & FIXTURE PROD W/O WATER	1	1	1
2531	2531	PUBLIC BUILDING AND RELATED FURNITURE	429	P	WOOD FURN & FIXTURE PROD W/ WATER	1	1	2
2541	2541	WOOD PARTITIONS, SHELVING, LOCKERS & OFF	429	O	WOOD FURN & FIXTURE PROD W/O WATER	1	1	1

APPENDIX A
SIC Code Cross Reference
and Total and Human Health Toxicity Number

1972/ 1977	1987	1987	CFR	CFR	Sub-part title	Human Health Toxicity Number	Total Toxicity Number	Industry Subcat Number
SIC Code	SIC Code	Title	CFR Part	Sub- Part				
2541	2541	WOOD PARTITIONS, SHELVING, LOCKERS & OFF	429	P	WOOD FURN & FIXTURE PROD W/O WATER	1	1	2
2542	2542	METAL PARTITIONS, SHELVING, LOCKERS & OF	433	A	METAL FINISHING	1	9	0
2542	2542	METAL PARTITIONS, SHELVING, LOCKERS & OF		NR	NO ELECTROPLATING	1	1	99
2591	2591	DRAPERY HARDWARE & WINDOW BLINDS AND SHA		NR		1	1	99
2599	2522	FURNITURE AND FIXTURES, NEC	433	A	METAL FINISHING	1	9	1
2599	2522	FURNITURE AND FIXTURES, NEC		NR	NO ELECTROPLATING	1	1	99
2599	2542	FURNITURE AND FIXTURES, NEC	433	A	METAL FINISHING	1	9	2
2599	2542	FURNITURE AND FIXTURES, NEC			NO ELECTROPLATING	1	1	3
2599	2599	FURNITURE AND FIXTURES, NEC	429	O	WOOD FURNITURE & FIXTURE PROD. W/O WATER	1	1	4
2599	2599	FURNITURE AND FIXTURES, NEC	429	P	WOOD FURNITURE & FIXTURE PROD. W/ WATER	1	1	5
2611	2611	PULP MILLS	430	A	UNBLEACHED KRAFT	10	10	1
2611	2611	PULP MILLS	430	B	SEMI-CHEMICAL	1	5	2
2611	2611	PULP MILLS	430	J	PAPER GRADE SULFITE(BLOW PIT WASH)	10	10	8
2611	2611	PULP MILLS	430	D	UNBL KRAFT-NTRL SULFITE-SEMI-CHEM	10	10	3
2611	2611	PULP MILLS	430	G	MARKET BLEACHED KRAFT	10	10	5
2611	2611	PULP MILLS	430	H	BOARD, COARSE & KRAFT BLEACHED KRAFT	10	10	6
2611	2611	PULP MILLS	430	I	FINE BLEACHED KRAFT	10	10	7
2611	2611	PULP MILLS	430	F	DISSOLVING KRAFT	10	10	4
2611	2611	PULP MILLS	430	K	DISSOLVING SULFITE PULP	10	10	9
2611	2611	PULP MILLS	430	L	GROUNDWOOD CHEMI-MECHANICAL	2	4	10
2611	2611	PULP MILLS	430	M	GROUNDWOOD THERMO-MECHANICAL	2	4	11
2611	2611	PULP MILLS	430	N	GROUNDWOOD COARSE, MOLDED & NEWS PAPERS	2	4	12
2611	2611	PULP MILLS	430	O	GROUNDWOOD FINE PAPERS	2	4	13
2611	2611	PULP MILLS	430	P	SODA	4	5	14
2611	2611	PULP MILLS	430	U	PAPER GRADE SULFITE (DRUM WASH)	8	8	15
2611	2611	PULP MILLS	430	V	UNBLEACHED KRAFT & SEMI-CHEMICAL	10	10	16
2621	2611	PAPER MILLS EXCEPT BUILDING PAPER	430	A	UNBLEACHED KRAFT	10	10	1
2621	2611	PAPER MILLS EXCEPT BUILDING PAPER	430	B	SEMI-CHEMICAL	1	5	2
2621	2611	PAPER MILLS EXCEPT BUILDING PAPER	430	D	UNBL KRAFT-NTRL SULFITE SEMI-CHEM	10	10	3
2621	2611	PAPER MILLS EXCEPT BUILDING PAPER	430	F	DISSOLVING KRAFT	10	10	4
2621	2611	PAPER MILLS EXCEPT BUILDING PAPER	430	G	MARKET BLEACHED KRAFT	10	10	5
2621	2611	PAPER MILLS EXCEPT BUILDING PAPER	430	H	BOARD, COARSE & KRAFT BLEACHED KRAFT	10	10	6
2621	2611	PAPER MILLS EXCEPT BUILDING PAPER	430	I	FINE BLEACHED KRAFT	10	10	7
2621	2611	PAPER MILLS EXCEPT BUILDING PAPER	430	J	PAPER GRADE SULFITE(BLOW PIT WASH)	10	10	8
2621	2611	PAPER MILLS EXCEPT BUILDING PAPER	430	O	GROUNDWOOD FINE PAPERS	2	4	13
2621	2611	PAPER MILLS EXCEPT BUILDING PAPER	430	L	GROUNDWOOD CHEMI-MECHANICAL	2	4	10
2621	2611	PAPER MILLS EXCEPT BUILDING PAPER	430	M	GROUNDWOOD THERMO-MECHANICAL	2	4	11
2621	2611	PAPER MILLS EXCEPT BUILDING PAPER	430	N	GROUNDWOOD COARSE, MOLDED & NEWSPAPERS	2	4	12
2621	2611	PAPER MILLS EXCEPT BUILDING PAPER	430	K	DISSOLVING SUFITE PULP	10	10	9
2621	2611	PAPER MILLS EXCEPT BUILDING PAPER	430	P	SODA	4	5	14
2621	2611	PAPER MILLS EXCEPT BUILDING PAPER	430	U	PAPER GRADE SULFITE (DRUM WASH)	8	8	15
2621	2611	PAPER MILLS EXCEPT BUILDING PAPER	430	V	UNBLEACHED KRAFT AND SEMI-CHEMICAL	10	10	16
2621	2621	PAPER MILLS EXCEPT BUILDING PAPER	430	A	UNBLEACHED KRAFT	10	10	17
2621	2621	PAPER MILLS EXCEPT BUILDING PAPER	430	B	SEMI-CHEMICAL	1	5	18
2621	2621	PAPER MILLS EXCEPT BUILDING PAPER	430	D	UNBLEACHED KRAFT-NTRL SULFITE-SEMI-CHEM	10	10	19
2621	2621	PAPER MILLS EXCEPT BUILDING PAPER	430	U	PAPERGRADE SULFITE (DRUM WASH)	8	8	30
2621	2621	PAPER MILLS EXCEPT BUILDING PAPER	430	V	UNBLEACHED KRAFT & SEMI-CHEMICAL	10	10	31
2621	2621	PAPER MILLS EXCEPT BUILDING PAPER	430	I	FINE BLEACHED KRAFT	10	10	21
2621	2621	PAPER MILLS EXCEPT BUILDING PAPER	430	X	NONINTEGRATED LIGHTWEIGHT PAPERS	1	2	32
2621	2621	PAPER MILLS EXCEPT BUILDING PAPER	430	L	GROUNDWOOD CHEMI-MECHANICAL	2	4	23
2621	2621	PAPER MILLS EXCEPT BUILDING PAPER	430	Y	NONINTEGRATED FILTER AND NONWOVEN PAPERS	1	5	33
2621	2621	PAPER MILLS EXCEPT BUILDING PAPER	430	M	GROUNDWOOD COARSE, MOLDED & NEWSPAPERS	2	4	25
2621	2621	PAPER MILLS EXCEPT BUILDING PAPER	430	P	SODA	4	5	27
2621	2621	PAPER MILLS EXCEPT BUILDING PAPER	430	R	NONINTEGRATED FINE PAPERS	1	5	29

APPENDIX A
SIC Code Cross Reference
and Total and Human Health Toxicity Number

1972/ 1977	1987		CFR	CFR		Human	Total	Industr
SIC	SIC	1987	CFR	Sub-	Sub-part title	Health	Toxicity	Subcat
Code	Code	Title	Part	Part		Number	Number	Number
2621	2621	PAPER MILLS EXCEPT BUILDING PAPER	430	H	BOARD, COARSE & TISSUE BLEACHED KRAFT	10	10	20
2621	2621	PAPER MILLS EXCEPT BUILDING PAPER	430	J	PAPER GRADE SULFITE (BLOW PIT WASH)	10	10	22
2621	2621	PAPER MILLS EXCEPT BUILDING PAPER	430	M	GROUNDWOOD THERMO-MECHANICAL	2	4	24
2621	2621	PAPER MILLS EXCEPT BUILDING PAPER	430	O	GROUNDWOOD FINE PAPERS	2	4	26
2621	2621	PAPER MILLS EXCEPT BUILDING PAPER	430	Q	DEINK	4	7	28
2631	2611	PAPERBOARD MILLS	430	A	UNBLEACHED KRAFT	10	10	1
2631	2611	PAPERBOARD MILLS	430	B	SEMI-CHEMICAL	1	5	2
2631	2611	PAPERBOARD MILLS	430	D	UNBLEACHED KRAFT-NTRL SULFITE-SEMI-CHEM	10	10	3
2631	2611	PAPERBOARD MILLS	430	H	BOARD, COARSE & TISSUE BLEACHED KRAFT	10	10	4
2631	2611	PAPERBOARD MILLS	430	I	FINE BLEACHED KRAFT	10	10	5
2631	2611	PAPERBOARD MILLS	430	J	PAPER GRADE SULFITE (BLOW PIT WASH)	5	8	6
2631	2611	PAPERBOARD MILLS	430	L	GROUNDWOOD CHEMI-MECHANICAL	2	4	7
2631	2611	PAPERBOARD MILLS	430	M	GROUNDWOOD THERMO-MECHANICAL	2	4	8
2631	2631	PAPERBOARD MILLS	430	A	SEMI-CHEMICAL	1	5	19
2631	2611	PAPERBOARD MILLS	430	N	GROUNDWOOD COARSE, MOLDED & NEWSPAPERS	2	4	9
2631	2631	PAPERBOARD MILLS	430	D	UNBL KRAFT NTRL SULFITE SEMI-CHEM.	10	10	20
2631	2611	PAPERBOARD MILLS	430	P	SODA	4	5	11
2631	2631	PAPERBOARD MILLS	430	E	PAPERBOARD FROM WASTEPAPER	2	6	21
2631	2611	PAPERBOARD MILLS	430	R	NONINTEGRATED FINE PAPERS	1	5	13
2631	2631	PAPERBOARD MILLS	430	H	BOARD, COARSE TISSUE BLEACHED KRAFT	10	10	22
2631	2611	PAPERBOARD MILLS	430	V	UNBLEACHED KRAFT & SEMI-CHEMICAL	10	10	15
2631	2631	PAPERBOARD MILLS	430	S	NONINTEGRATED TISSUE PAPERS	1	4	23
2631	2611	PAPERBOARD MILLS	430	Y	NONINTEGRATED FILTER AND NONWOVEN PAPERS	1	5	17
2631	2631	PAPERBOARD MILLS	430	V	UNBLEACHED KRAFT AND SEMI-CHEMICAL	10	10	24
2631	2611	PAPERBOARD MILLS	430	O	GROUNDWOOD FINE PAPERS	2	4	10
2631	2611	PAPERBOARD MILLS	430	U	PAPERGRADE SULFITE (DRUM WASH)	1	8	14
2631	2611	PAPERBOARD MILLS	430	X	NONINTEGRATED LIGHTWEIGHT PAPERS	1	2	16
2631	2631	PAPERBOARD MILLS	430	A	UNBLEACHED KRAFT	10	10	18
2631	2611	PAPERBOARD MILLS	430	Q	DEINK	4	7	12
2631	2631	PAPERBOARD MILLS	430	Z	NONINTEGRATED PAPERBOARD	1	4	25
2641	2671	PAPER COATING AND GLAZING		NR	CONVERTED PAPER	1	1	99
2641	2672	PAPER COATING AND GLAZING		NR	CONVERTED PAPER	1	1	99
2642	2677	ENVELOPES		NR	CONVERTED PAPER	1	1	99
2643	2674	BAGS, EXCEPT TEXTILE BAGS		NR	CONVERTED PAPER	1	1	99
2643	2673	BAGS, EXCEPT TEXTILE BAGS		NR	CONVERTED PAPER	1	1	99
2645	2675	DIE-CUT PAPER, PAPERBOARD AND CARDBOARD		NR	CONVERTED PAPER	1	1	99
2646	2679	PRESSED AND MOLDED PULP GOODS		NR	CONVERTED PAPER	1	1	99
2647	2676	SANITARY PAPER PRODUCTS		NR	CONVERTED PAPER	1	1	99
2648	2678	STATIONERY, TABLETS AND RELATED PRODUCTS		NR	CONVERTED PAPER	1	1	99
2649	2679	CONVERTED PAPER AND PAPERBOARD PRODUCTS,		NR	CONVERTED PAPER	1	1	99
2651	2657	FOLDING PAPERBOARD BOXES		NR	CONVERTED PAPER	1	1	99
2652	2652	SET-UP PAPERBOARD BOXES		NR	CONVERTED PAPER	1	1	99
2653	2653	CORRUGATED AND SOLID FIBER BOXES		NR	CONVERTED PAPER	1	1	99
2654	2657	SANITARY FOOD CONTAINERS		NR	CONVERTED PAPER	1	1	99
2654	2656	SANITARY FOOD CONTAINERS		NR	CONVERTED PAPER	1	1	99
2655	2655	FIBER CANS, TUBES, DRUMS AND SIMILAR PRO		NR	CONVERTED PAPER	1	1	99
2661	2493	BUILDING PAPER & BUILDINGBOARD MILLS	429	NR	PARTICLEBOARD	1	1	1
2661	2621	BUILDING PAPER & BUILDINGBOARD MILLS	431	A	BUILDER'S PAPER AND ROOFING FELT	1	8	2
2711	2711	NEWSPAPERS: PUBLISHING, PUBLISHING & PR		NR		3	3	99
2721	2721	PERIODICALS: PUBLISHING, PUBLISHING & P		NR		3	3	99
2731	2731	BOOKS: PUBLISHING, PUBLISHING & PRINTIN		NR		3	3	99
2732	2732	BOOK PRINTING		NR		3	3	99
2741	2741	MISCELLANEOUS PUBLISHING		NR		3	3	99
2751	2759	COMMERCIAL PRINTING, LETTERPRESS & SCREE		NR		3	3	99

APPENDIX A
SIC Code Cross Reference
and Total and Human Health Toxicity Number

1977/	1987	1987	CFR	Sub-	Sub-part title	Human	Total	Industry
SIC	SIC	Title	Part	Part		Health	Toxicity	Subcat
Code	Code					Number	Number	Number
2752	2752	COMMERCIAL PRINTING, LITHOGRAPHIC		NR		3	3	99
2753	2796	ENGRAVING & PLATE PRINTING		NR		3	3	99
2753	2759	ENGRAVING & PLATE PRINTING		NR		3	3	99
2754	2796	COMMERCIAL PRINTING, GRAVURE		NR		3	3	99
2754	2754	COMMERCIAL PRINTING, GRAVURE		NR		3	3	99
2761	2761	MANIFOLD BUSINESS FORMS		NR		3	3	99
2771	2771	GREETING CARD PUBLISHING		NR		3	3	99
2782	2782	BLANKBOOKS, LOOSELEAF BINDERS & DEVICES		NR		3	3	99
2789	2789	BOOKBINDING & RELATED WORK		NR		3	3	99
2791	2791	TYPESETTING		NR		3	3	99
2793	2796	PHOTOENGRAVING		NR		3	3	99
2794	2796	ELECTROTYPING & STEREOTYPING		NR		3	3	99
2795	2796	LITHOGRAPHIC PLATEMAKING & RELATED SERVI		NR		3	3	99
2812	2812	ALKALIES AND CHLORINE	415	F	CHLORINE & SODIUM OR POTASSIUM HYDR.	10	10	1
2812	2812	ALKALIES AND CHLORINE	415	F	CHLORINE & SOD/POT HYDR.(MERCURY CELL)	10	10	3
2812	2812	ALKALIES AND CHLORINE	415	F	CHLORINE & SOD/POT HYDR.(DIAPHRAGM CELL)	10	10	2
2812	2812	ALKALIES AND CHLORINE	415	M	SODIUM BICARBONATE	3	3	5
2812	2812	ALKALIES AND CHLORINE	415	O	SODIUM CARBONATE	6	6	4
2812	2812	ALKALIES AND CHLORINE		NR	POTASSIUM CARBONATE	3	3	99
2812	2812	ALKALIES AND CHLORINE		NR	NON-CONTACT COOLING WATER ONLY	1	1	99
2813	2813	INDUSTRIAL GASES	415	AF	CARBON DIOXIDE	3	3	1
2813	2813	INDUSTRIAL GASES	415	AO	HYDROGEN	3	3	2
2813	2813	INDUSTRIAL GASES	415	AW	OXYGEN & NITROGEN	3	3	3
2813	2813	INDUSTRIAL GASES		NR	GASES,IND COMPRESSED LIQUID/SOLID,NEC	3	3	99
2813	2813	INDUSTRIAL GASES		NR	NITROUS OXIDE	3	3	99
2813	2813	INDUSTRIAL GASES		NR	NON-CONTACT COOLING WATER ONLY	1	1	99
2816	2816	INORGANIC PIGMENTS	415	V	TITANIUM DIOXIDE (SULFATE PROCESS)	8	9	1
2816	2816	INORGANIC PIGMENTS	415	V	TITANIUM DIOXIDE (CHLORIDE PROCESS)	1	2	2
2816	2816	INORGANIC PIGMENTS	415	AN	CHROME PIGMENTS	1	8	3
2816	2816	INORGANIC PIGMENTS		NR	BARYTES PIGMENTS	6	6	99
2816	2816	INORGANIC PIGMENTS	415	BJ	ZINC OXIDE	6	6	4
2816	2816	INORGANIC PIGMENTS		NR	LEAD DIOXIDE, BROWN (PbO2)	6	6	99
2816	2816	INORGANIC PIGMENTS		NR	LEAD OXIDE, RED (Pb3O4)	6	6	99
2816	2816	INORGANIC PIGMENTS		NR	BARILUM SULFATE	6	6	99
2816	2816	INORGANIC PIGMENTS		NR	WHITE LEAD PIGMENT (Pb(OH)2+PbCO3)	6	6	99
2816	2816	INORGANIC PIGMENTS		NR	IRON COLORS	6	6	99
2816	2816	INORGANIC PIGMENTS		NR	IRON OXIDE, BLACK	6	6	99
2816	2816	INORGANIC PIGMENTS		NR	IRON OXIDE, MAGNETIC	6	6	99
2816	2816	INORGANIC PIGMENTS		NR	IRON OXIDE, YELLOW	6	6	99
2816	2816	INORGANIC PIGMENTS		NR	OCHERS	6	6	99
2816	2816	INORGANIC PIGMENTS		NR	SATIN WHITE PIGMENT	6	6	99
2816	2816	INORGANIC PIGMENTS		NR	NON-CONTACT COOLING WATER ONLY	1	1	99
2816	2816	INORGANIC PIGMENTS		NR	ULTRAMARINE PIGMENT	6	6	99
2816	2816	INORGANIC PIGMENTS		NR	UMBERS	6	6	99
2816	2816	INORGANIC PIGMENTS		NR	WHITING	6	6	99
2816	2816	INORGANIC PIGMENTS		NR	SIENNAS	6	6	99
2816	2816	INORGANIC PIGMENTS	415	BL	CADMIUM PIGMENTS	10	10	5
2819	2819	INORGANIC CHEMICALS NEC	415	A	ALUMINUM CHLORIDE	6	6	1
2819	2819	INORGANIC CHEMICALS NEC	415	B	ALUMINUM SULFATE	3	3	6
2819	2819	INORGANIC CHEMICALS NEC	415	C	CALCIUM CARBIDE	3	3	26
2819	2819	INORGANIC CHEMICALS NEC	415	D	CALCIUM CHLORIDE	6	6	28
2819	2819	INORGANIC CHEMICALS NEC	415	J	NITRIC ACID	3	3	81
2819	2819	INORGANIC CHEMICALS NEC	415	G	HYDROCHLORIC ACID	3	3	51
2819	2819	INORGANIC CHEMICALS NEC	415	H	HYDROFLUORIC ACID	8	9	52

APPENDIX A
SIC Code Cross Reference
and Total and Human Health Toxicity Number

1972/ 1977	1987	1987	CFR	Sub-	Sub-part title	Human	Total	Industr
SIC	SIC	1987	CFR	Sub-	Sub-part title	Health	Toxicity	Subcat
Code	Code	Title	Part	Part		Number	Number	Number
2819	2819	INORGANIC CHEMICALS NEC	415	I	HYDROGEN PEROXIDE	3	3	55
2819	2819	INORGANIC CHEMICALS NEC	415	E	CALCIUM OXIDE	6	6	31
2819	2819	INORGANIC CHEMICALS NEC	415	K	POTASSIUM METAL	3	3	166
2819	2819	INORGANIC CHEMICALS NEC	415	L	POTASSIUM DICHROMATE	3	3	96
2819	2819	INORGANIC CHEMICALS NEC	415	M	POTASSIUM SULFATE	6	6	102
2819	2819	INORGANIC CHEMICALS NEC	415	P	SODIUM CHLORIDE	6	6	121
2819	2819	INORGANIC CHEMICALS NEC	415	Q	SODIUM DICHROMATE/SODIUM SULFATE	3	3	124
2819	2819	INORGANIC CHEMICALS NEC	415	R	SODIUM METAL	3	3	128
2819	2819	INORGANIC CHEMICALS NEC	415	AD	CALCIUM CARBONATE	3	3	27
2819	2819	INORGANIC CHEMICALS NEC	415	AE	CALCIUM HYDROXIDE	6	6	165
2819	2819	INORGANIC CHEMICALS NEC	415	T	SODIUM SULFITE	6	6	131
2819	2819	INORGANIC CHEMICALS NEC	415	AG	CALCIUM MONOXIDE & BY-PRODUCT HYDROGEN	3	3	32
2819	2819	INORGANIC CHEMICALS NEC	415	W	ALUMINUM FLUORIDE	7	8	3
2819	2819	INORGANIC CHEMICALS NEC	415	AI	CHROMIC ACID	3	3	35
2819	2819	INORGANIC CHEMICALS NEC	415	Y	AMMONIUM HYDROXIDE	3	3	11
2819	2819	INORGANIC CHEMICALS NEC	415	AJ	COPPER SULFATE	10	10	43
2819	2819	INORGANIC CHEMICALS NEC	415	AA	BORAX	3	3	19
2819	2819	INORGANIC CHEMICALS NEC	415	AK	CUPROUS OXIDE	10	10	44
2819	2819	INORGANIC CHEMICALS NEC	415	AC	BROMINE	3	3	24
2819	2819	INORGANIC CHEMICALS NEC	415	AL	FERRIC CHLORIDE	3	3	45
2819	2819	INORGANIC CHEMICALS NEC	415	U	SULFURIC ACID	3	3	144
2819	2819	INORGANIC CHEMICALS NEC	415	Z	BARIUM CARBONATE	3	3	15
2819	2819	INORGANIC CHEMICALS NEC	415	AB	BORIC ACID	6	6	20
2819	2819	INORGANIC CHEMICALS NEC	415	S	SODIUM SILICATE	3	3	129
2819	2819	INORGANIC CHEMICALS NEC	415	X	AMMONIUM CHLORIDE	3	3	9
2819	2819	INORGANIC CHEMICALS NEC	415	AM	FERROUS SULFATE	3	3	46
2819	2819	INORGANIC CHEMICALS NEC	415	AN	FLUORINE	3	3	48
2819	2819	INORGANIC CHEMICALS NEC	415	AO	HYDROGEN	3	3	53
2819	2819	INORGANIC CHEMICALS NEC	415	AP	HYDROGEN CYANIDE	1	7	54
2819	2819	INORGANIC CHEMICALS NEC	415	AQ	IODINE	3	3	61
2819	2819	INORGANIC CHEMICALS NEC		NR	SILVER OXIDE	6	6	99
2819	2819	INORGANIC CHEMICALS NEC	415	AR	LEAD MONOXIDE	3	3	64
2819	2819	INORGANIC CHEMICALS NEC		NR	SODA ALUM	6	6	99
2819	2819	INORGANIC CHEMICALS NEC	415	AT	MANGANESE SULFATE	3	3	71
2819	2819	INORGANIC CHEMICALS NEC		NR	SODIUM ANTIMONATE	6	6	99
2819	2819	INORGANIC CHEMICALS NEC	415	AV	NITRIC ACID (STRONG)	3	3	80
2819	2819	INORGANIC CHEMICALS NEC	415	BW	SODIUM CHLORATE	10	10	120
2819	2819	INORGANIC CHEMICALS NEC	415	AY	POTASSIUM IODIDE	3	3	98
2819	2819	INORGANIC CHEMICALS NEC		NR	SODIUM COMPOUNDS, INORGANIC	6	6	99
2819	2819	INORGANIC CHEMICALS NEC	415	BA	SILVER NITRATE	6	6	115
2819	2819	INORGANIC CHEMICALS NEC		NR	SODIUM CYANIDE	6	6	99
2819	2819	INORGANIC CHEMICALS NEC	415	BC	SODIUM FLUORIDE	3	3	125
2819	2819	INORGANIC CHEMICALS NEC		NR	STANNIC AND STANNOUS CHLORIDE	6	6	99
2819	2819	INORGANIC CHEMICALS NEC	415	BE	SODIUM HYDROSULFITE	3	3	126
2819	2819	INORGANIC CHEMICALS NEC		NR	STROMTIUM CARBONATE (PRECIPITATED/OXIDE)	6	6	99
2819	2819	INORGANIC CHEMICALS NEC	415	BG	SODIUM THIOSULFATE	3	3	132
2819	2819	INORGANIC CHEMICALS NEC		NR	STROMTIUM NITRATE	6	6	99
2819	2819	INORGANIC CHEMICALS NEC	415	BI	SULFUR DIOXIDE	3	3	141
2819	2819	INORGANIC CHEMICALS NEC		NR	SULFIDES & SULFITES	6	6	99
2819	2819	INORGANIC CHEMICALS NEC	415	BK	ZINC SULFATE	3	3	149
2819	2819	INORGANIC CHEMICALS NEC		NR	SULFOCYANIDES	6	6	99
2819	2819	INORGANIC CHEMICALS NEC		NR	ALUMINUM HYDROXIDE	6	6	99
2819	2819	INORGANIC CHEMICALS NEC		NR	SULFUR CHLORIDE	6	6	99
2819	2819	INORGANIC CHEMICALS NEC		NR	ALUMS	6	6	99

APPENDIX A
SIC Code Cross Reference
and Total and Human Health Toxicity Number

1972/ 1977 SIC Code	1987 SIC Code	1987 Title	CFR Part	CFR Sub- Part	Sub-part title	Human Health Toxicity Number	Total Toxicity Number	Industr Subcat Number
2819	2819	INORGANIC CHEMICALS NEC		NR	SULFUR HEXAFLUORIDE	6	6	99
2819	2819	INORGANIC CHEMICALS NEC		NR	AMMONIUM COMPOUNDS	6	6	99
2819	2819	INORGANIC CHEMICALS NEC		NR	THIOCYANATES, INORGANIC	6	6	99
2819	2819	INORGANIC CHEMICALS NEC		NR	AMMONIUM PERCHLORATE	6	6	99
2819	2819	INORGANIC CHEMICALS NEC		NR	TIN COMPOUNDS, INORGANIC	6	6	99
2819	2819	INORGANIC CHEMICALS NEC		NR	BARIUM COMPOUNDS (NOT PRODUCED AT MINES)	6	6	99
2819	2819	INORGANIC CHEMICALS NEC		NR	URANIUM SLAG, RADIOACTIVE	6	6	99
2819	2819	INORGANIC CHEMICALS NEC		NR	BORON COMPOUNDS (NOT PRODUCED AT MINES)	6	6	99
2819	2819	INORGANIC CHEMICALS NEC	415	BO	ZINC CHLORIDE	10	10	147
2819	2819	INORGANIC CHEMICALS NEC		NR	BRINE CHEMICALS	6	6	99
2819	2819	INORGANIC CHEMICALS NEC		NR	ZINC SULFIDE	6	6	99
2819	2819	INORGANIC CHEMICALS NEC		NR	CALCIUM HYPOCHLORITE	6	6	99
2819	2819	INORGANIC CHEMICALS NEC		NR	CALCIUM	3	3	99
2819	2819	INORGANIC CHEMICALS NEC		NR	CHLOROSULFONIC ACID	6	6	99
2819	2819	INORGANIC CHEMICALS NEC		NR	NON-CONTACT COOLING ONLY	1	1	99
2819	2819	INORGANIC CHEMICALS NEC		NR	CHROMIUM SULFATE	6	6	99
2819	2819	INORGANIC CHEMICALS NEC	419	E	INTEGRATED REFINERIES (SULFUR RECOVERY)	6	6	139
2819	2819	INORGANIC CHEMICALS NEC	415	BM	COBALT SALTS (COBALT SULFATE)	1	8	39
2819	2819	INORGANIC CHEMICALS NEC	421	A	BAUXITE REFINING	5	10	164
2819	2819	INORGANIC CHEMICALS NEC		NR	COPPER CHLORIDE	6	6	99
2819	2819	INORGANIC CHEMICALS NEC	421	A	BAUXITE REFINING (ALUMINA)	5	10	168
2819	2819	INORGANIC CHEMICALS NEC		NR	FISSIONABLE MATERIALS PRODUCTION	6	6	99
2819	2819	INORGANIC CHEMICALS NEC	421	O	BERYLIUM OXIDE	5	10	17
2819	2819	INORGANIC CHEMICALS NEC		NR	HYDRATED ALUMINUM SILICATE	6	6	99
2819	2819	INORGANIC CHEMICALS NEC	422	A	PHOSPHORUS PRODUCTION	6	6	160
2819	2819	INORGANIC CHEMICALS NEC		NR	HYDROPHOSPHITES	6	6	99
2819	2819	INORGANIC CHEMICALS NEC	422	B	PHOSPHORUS CONSUMING	6	6	161
2819	2819	INORGANIC CHEMICALS NEC		NR	INORGANIC ACIDS (EXC HNO2 OR H2PO4)	6	6	99
2819	2819	INORGANIC CHEMICALS NEC	422	C	PHOSPHATE	6	6	162
2819	2819	INORGANIC CHEMICALS NEC		NR	ISOTOPES, RADIOACTIVE	6	6	99
2819	2819	INORGANIC CHEMICALS NEC	422	D	DEFLUORINATED PHOSPHATE ROCK	6	6	158
2819	2819	INORGANIC CHEMICALS NEC		NR	LEAD SILICATE	6	6	99
2819	2819	INORGANIC CHEMICALS NEC	422	E	DEFLUORINATED PHOSPHORIC ACID	6	6	159
2819	2819	INORGANIC CHEMICALS NEC		NR	LUMINOUS COMPOUNDS (RADIUM)	6	6	99
2819	2819	INORGANIC CHEMICALS NEC	422	F	SODIUM PHOSPHATES	6	6	163
2819	2819	INORGANIC CHEMICALS NEC		NR	MANGANESE DIOXIDE (POWDER SYNTHETIC)	6	6	99
2819	2819	INORGANIC CHEMICALS NEC	415	AU	NICKEL SALTS (NICKEL CHLORIDE)	8	9	169
2819	2819	INORGANIC CHEMICALS NEC		NR	MERCURY OXIDE	6	6	99
2819	2819	INORGANIC CHEMICALS NEC	415	AU	NICKEL SALTS (NICKEL NITRATE)	8	9	170
2819	2819	INORGANIC CHEMICALS NEC		NR	NUCLEAR FUEL REACTOR CASES, INORGANIC	6	6	99
2819	2819	INORGANIC CHEMICALS NEC	415	AU	NICKEL SALTS (NICKEL FLUOROBORATE)	8	9	171
2819	2819	INORGANIC CHEMICALS NEC		NR	OLEUM (FUMING SULFURIC ACID)	6	6	99
2819	2819	INORGANIC CHEMICALS NEC	415	AU	NICKEL SALTS (NICKEL CARBONATE)	8	9	172
2819	2819	INORGANIC CHEMICALS NEC		NR	PERCHLORIC ACID	6	3	99
2819	2819	INORGANIC CHEMICALS NEC	415	AJ	COPPER SALTS (COPPER CHLORIDE)	10	10	173
2819	2819	INORGANIC CHEMICALS NEC		NR	POTASH ALUM	6	6	99
2819	2819	INORGANIC CHEMICALS NEC	415	AJ	COPPER SALTS (COPPER IODIDE)	10	10	174
2819	2819	INORGANIC CHEMICALS NEC		NR	POTASSIUM ALUMINUM SULFATE	6	6	99
2819	2819	INORGANIC CHEMICALS NEC	415	AJ	COPPER SALTS (COPPER NITRATE)	10	10	175
2819	2819	INORGANIC CHEMICALS NEC		NR	POTASSIUM CYANIDE	6	6	99
2819	2819	INORGANIC CHEMICALS NEC	415	AJ	COPPER SALTS (COPPER CARBONATE)	10	10	176
2819	2819	INORGANIC CHEMICALS NEC		NR	POTASSIUM COMPOUNDS, INORGANIC	6	6	99
2819	2819	INORGANIC CHEMICALS NEC	415	BL	CADIUM SALTS (CADIUM CHLORIDE)	10	10	177
2819	2819	INORGANIC CHEMICALS NEC		NR	POTASSIUM NITRATE & SULFATE	6	6	99

APPENDIX A
SIC Code Cross Reference
and Total and Human Health Toxicity Number

1972/ 1977	1987		CFR	CFR		Human	Total	Industr
SIC	SIC	1987	CFR	Sub-	Sub-part title	Health	Toxicity	Subcat
Code	Code	Title	Part	Part		Number	Number	Number
2819	2819	INORGANIC CHEMICALS NEC	415	BL	CADIUM SALTS (CADIUM NITRATE)	10	10	178
2819	2819	INORGANIC CHEMICALS NEC		NR	RADIUM LUMINOUS COMPOUNDS	6	6	99
2819	2819	INORGANIC CHEMICALS NEC	415	BL	CADIUM SALTS (CADIUM SULFATE)	10	10	179
2819	2819	INORGANIC CHEMICALS NEC		NR	REAGENT GRADE CHEM (INORG REF FROM TECH)	6	6	99
2819	2819	INORGANIC CHEMICALS NEC	415	BM	COBALT SALTS (COBALT NITRATE)	8	8	180
2819	2819	INORGANIC CHEMICALS NEC		NR	SILICA AMORPHOUS	6	6	99
2819	2819	INORGANIC CHEMICALS NEC		NR	SILVER BROMIDE	6	6	99
2819	2819	INORGANIC CHEMICALS NEC	415	BM	COBALT SALTS (COBALT CHLORIDE)	1	8	38
2819	2819	INORGANIC CHEMICALS NEC		NR	COBALT 60 (RADIOACTIVE)	6	6	99
2819	2819	INORGANIC CHEMICALS NEC		NR	SILVER CYANIDE	6	6	99
2819	2819	INORGANIC CHEMICALS NEC		NR	COPPER IODIDE	6	6	99
2819	2819	INORGANIC CHEMICALS NEC	415	AS	LITHIUM CARBONATE	3	3	66
2819	2819	INORGANIC CHEMICALS NEC		NR	HEAVY WATER (DEUTERIUM OXIDE)	6	6	99
2819	2819	INORGANIC CHEMICALS NEC	415	AX	POTASSIUM CHLORIDE	3	3	92
2819	2819	INORGANIC CHEMICALS NEC		NR	HYDROGEN SULFIDE	6	6	99
2819	2819	INORGANIC CHEMICALS NEC	415	BB	SODIUM BISULFITE	3	3	119
2819	2819	INORGANIC CHEMICALS NEC		NR	INDIUM CHLORIDE	6	6	99
2819	2819	INORGANIC CHEMICALS NEC	415	BF	SODIUM SILICOFLUORIDE	6	6	130
2819	2819	INORGANIC CHEMICALS NEC		NR	IODIDES	6	6	99
2819	2819	INORGANIC CHEMICALS NEC	415	BJ	ZINC OXIDE	3	3	148
2819	2819	INORGANIC CHEMICALS NEC		NR	LEAD ARSENATE	6	6	99
2819	2819	INORGANIC CHEMICALS NEC		NR	ALUMINUM OXIDE	6	6	99
2819	2819	INORGANIC CHEMICALS NEC		NR	LITHIUM COMPOUNDS	6	6	99
2819	2819	INORGANIC CHEMICALS NEC		NR	AMMONIUM MOLYBDATE	6	6	99
2819	2819	INORGANIC CHEMICALS NEC		NR	MAGNESIUM COMPOUNDS (INORGANIC)	6	6	99
2819	2819	INORGANIC CHEMICALS NEC		NR	BLEACHING POWDER	6	6	99
2819	2819	INORGANIC CHEMICALS NEC		NR	MERCURY CHLORIDE	6	6	99
2819	2819	INORGANIC CHEMICALS NEC		NR	CALCIUM COMPOUNDS (INORGANIC)	6	6	99
2819	2819	INORGANIC CHEMICALS NEC		NR	NICKEL AMMONIUM SULFATE	6	6	99
2819	2819	INORGANIC CHEMICALS NEC		NR	CHROMIUM OXIDE	6	6	99
2819	2819	INORGANIC CHEMICALS NEC		NR	NUCLEAR FUEL SCRAP RE-PROCESSING	6	6	99
2819	2819	INORGANIC CHEMICALS NEC		NR	SILVER IODIDE	6	6	99
2819	2819	INORGANIC CHEMICALS NEC		NR	OXIDATION CATALYST FROM PORCELAIN	6	6	99
2819	2819	INORGANIC CHEMICALS NEC	415	AZ	POTASSIUM PERMANGANATE	3	3	101
2819	2819	INORGANIC CHEMICALS NEC		NR	PEROXIDES, INORGANIC	6	6	99
2819	2819	INORGANIC CHEMICALS NEC	415	BH	STANNIC OXIDE	3	3	134
2819	2819	INORGANIC CHEMICALS NEC		NR	POTASH MAGNESIA	6	6	99
2819	2819	INORGANIC CHEMICALS NEC		NR	AMMONIA ALUM	6	6	99
2819	2819	INORGANIC CHEMICALS NEC		NR	POTASSIUM BROMIDE	6	6	99
2819	2819	INORGANIC CHEMICALS NEC		NR	BOROSILICATE	6	6	99
2819	2819	INORGANIC CHEMICALS NEC		NR	POTASSIUM CHLORATE	6	6	99
2819	2819	INORGANIC CHEMICALS NEC-		NR	SILVER CHLORIDE	6	6	99
2819	2819	INORGANIC CHEMICALS NEC		NR	POTASSIUM HYPOCHLORITE	6	6	99
2819	2819	INORGANIC CHEMICALS NEC	415	BD	SODIUM HYDROSULFIDE	3	3	127
2819	2819	INORGANIC CHEMICALS NEC		NR	AMMONIUM THIOSULFATE	6	6	99
2819	2819	INORGANIC CHEMICALS NEC		NR	CERIUM SALTS	6	6	99
2819	2819	INORGANIC CHEMICALS NEC	415	AU	NICKEL SULFATE	8	10	79
2819	2819	INORGANIC CHEMICALS NEC		NR	ALUMINUM COMPOUNDS	6	6	99
2819	2819	INORGANIC CHEMICALS NEC		NR	RADIUM CHLORIDE	6	6	99
2819	2819	INORGANIC CHEMICALS NEC		NR	RARE EARTH METAL SALTS	6	6	99
2819	2819	INORGANIC CHEMICALS NEC		NR	SALTS OF RARE EARTH METALS	6	6	99
2819	2819	INORGANIC CHEMICALS NEC		NR	SILICA GEL	6	6	99
2819	2819	INORGANIC CHEMICALS NEC		NR	SILVER CARBONATE	6	6	99
2821	2821	PLASTIC MATERIALS, SYN RESINS & NONVUL E	414/416	#	RAYON FIBERS	8	9	5

APPENDIX A
SIC Code Cross Reference
and Total and Human Health Toxicity Number

1972/ 1977	1987	1987	CFR	CFR	Sub-part title	Human	Total	Industr
SIC	SIC	Title	CFR	Sub-		Health	Toxicity	Subcat
Code	Code		Part	Part		Number	Number	Number
2821	2821	PLASTIC MATERIALS, SYN RESINS & NONVUL E	414/416	D	THERMOPLASTIC RESINS	8	9	2
2821	2821	PLASTIC MATERIALS, SYN RESINS & NONVUL E	414/416	E	THERMOSETTING RESINS	8	9	3
2821	2821	PLASTIC MATERIALS, SYN RESINS & NONVUL E		NR	NON-CONTACT COOLING WATER ONLY	1	1	99
2821	2821	PLASTIC MATERIALS, SYN RESINS & NONVUL E	414/416	C	OTHER FIBERS	8	9	16
2822	2822	SYNTHETIC RUBBER (VULCANIZABLE ELASTOMER	414/416	D	THERMOPLASTIC RESINS (SILICOMES)	8	9	4
2822	2822	SYNTHETIC RUBBER (VULCANIZABLE ELASTOMER	428	B	EMULSION CRUMB RUBBER	8	8	1
2822	2822	SYNTHETIC RUBBER (VULCANIZABLE ELASTOMER	428	C	SOLUTION CRUMB RUBBER	8	8	2
2822	2822	SYNTHETIC RUBBER (VULCANIZABLE ELASTOMER	428	D	LATEX RUBBER	8	8	3
2822	2822	SYNTHETIC RUBBER (VULCANIZABLE ELASTOMER		NR	NON-CONTACT COOLING WATER ONLY	1	1	99
2823	2823	CELLULOSIC MAN-MADE FIBERS		NR	NON-CONTACT COOLING WATER ONLY	1	1	99
2823	2823	CELLULOSIC MAN-MADE FIBERS	416	B	RAYON FIBERS	8	9	1
2823	2823	CELLULOSIC MAN-MADE FIBERS	416	C	OTHER FIBERS	8	9	2
2824	2824	SYNTHETIC ORGANIC FIBERS, EXCEPT CELLULO	416	C	OTHER FIBERS	8	9	0
2824	2824	SYNTHETIC ORGANIC FIBERS, EXCEPT CELLULO		NR	NON-CONTACT COOLING WATER ONLY	1	1	99
2831	2835	BIOLOGICAL PRODUCTS	439	A	FERMENTATION PRODUCTS	6	8	1
2831	2835	BIOLOGICAL PRODUCTS	439	B	EXTRACTION PRODUCTS	6	8	2
2831	2836	BIOLOGICAL PRODUCTS	439	A	FERMENTATION PRODUCTS	6	8	3
2831	2836	BIOLOGICAL PRODUCTS	439	B	EXTRACTION PRODUCTS	6	8	4
2833	2833	MEDICINAL CHEMICALS & BOTANICAL PRODUCTS	439	A	FERMENTATION PRODUCTS	6	8	3
2833	2833	MEDICINAL CHEMICALS & BOTANICAL PRODUCTS	439	B	EXTRACTION PRODUCTS	6	8	2
2833	2833	MEDICINAL CHEMICALS & BOTANICAL PRODUCTS	439	C	CHEMICAL SYNTHESIS PRODUCTS	6	8	1
2833	2833	MEDICINAL CHEMICALS & BOTANICAL PRODUCTS		NR	NON-CONTACT COOLING WATER ONLY	1	1	99
2834	2834	PHARMACEUTICAL PREPARATIONS	439	D	MIXING/COMPOUNDING-FORMULATION	6	8	0
2834	2834	PHARMACEUTICAL PREPARATIONS		NR	NON-CONTACT COOLING WATER ONLY	1	1	99
2841	2841	SOAP & OTHER DETERGENTS, EXC SPECIALTY C	417	A	SOAP MANUFACTURING BY BATCH KETTLE	5	5	12
2841	2841	SOAP & OTHER DETERGENTS, EXC SPECIALTY C	417	B	FATTY ACID MANUFACTURING BY FATSPPLITTING	5	5	1
2841	2841	SOAP & OTHER DETERGENTS, EXC SPECIALTY C	417	C	SOAP MANUFAC BY FATTYACID NEUTRALIZATION	5	5	13
2841	2841	SOAP & OTHER DETERGENTS, EXC SPECIALTY C	417	D	GLYCERINE CONCENTRATION	5	5	2
2841	2841	SOAP & OTHER DETERGENTS, EXC SPECIALTY C	417	P	MANUFACTURING OF LIQUID DETERGENTS	5	5	9
2841	2841	SOAP & OTHER DETERGENTS, EXC SPECIALTY C	417	E	GLYCERINE DISTILLATION	5	5	3
2841	2841	SOAP & OTHER DETERGENTS, EXC SPECIALTY C	417	G	MANUFACTURING OF BAR SOAPS	5	5	4
2841	2841	SOAP & OTHER DETERGENTS, EXC SPECIALTY C	417	H	MANUFACTURING OF LIQUID SOAPS	5	5	8
2841	2841	SOAP & OTHER DETERGENTS, EXC SPECIALTY C	417	O	MANUFACTURING OF SPRAY DRIED DETERGENTS	5	5	11
2841	2841	SOAP & OTHER DETERGENTS, EXC SPECIALTY C	417	F	MANUFACTURING OF SOAP FLAKES & POWDERS	5	5	10
2841	2841	SOAP & OTHER DETERGENTS, EXC SPECIALTY C	417	Q	MANUFACTURING OF DETERGENTS BY DRY BLEND	5	5	6
2841	2841	SOAP & OTHER DETERGENTS, EXC SPECIALTY C	417	R	MANUFACTURING OF DRUM DRIED DETERGENTS	5	5	7
2841	2841	SOAP & OTHER DETERGENTS, EXC SPECIALTY C	417	S	MANUFACTURING OF DETERGENT BARS & CAKES	5	5	5
2841	2841	SOAP & OTHER DETERGENTS, EXC SPECIALTY C		NR	NON-CONTACT COOLING WATER ONLY	1	1	99
2842	2842	SPECIALTY CLEANING, POLISHING & SANITARY	417	H	MANUFACTURING OF LIQUID SOAPS	5	5	1
2842	2842	SPECIALTY CLEANING, POLISHING & SANITARY	417	P	MANUFACTURING OF LIQUID DETERGENTS	5	5	2
2842	2842	SPECIALTY CLEANING, POLISHING & SANITARY		NR	OTHER PREPARATIONS, NEC	5	5	99
2842	2842	SPECIALTY CLEANING, POLISHING & SANITARY		NR	NON-CONTACT COOLING WATER ONLY	1	1	99
2843	2843	SURFACE ACTIVE AGENTS, FINISHING AGENTS,		NR	NON-CONTACT COOLING WATER ONLY	1	1	99
2843	2843	SURFACE ACTIVE AGENTS, FINISHING AGENTS, 417		I	OLEUM SULFONATION & SULFATION	5	5	3
2843	2843	SURFACE ACTIVE AGENTS, FINISHING AGENTS, 417		J	AIR-SO3 SULFONATION & SULFATION	5	5	1
2843	2843	SURFACE ACTIVE AGENTS, FINISHING AGENTS, 417		K	SO3 SOLVENT & VACUUM SULFONATION	5	5	6
2843	2843	SURFACE ACTIVE AGENTS, FINISHING AGENTS, 417		L	SULFAMIC ACID SULFATION	5	5	7
2843	2843	SURFACE ACTIVE AGENTS, FINISHING AGENTS, 417		M	CHLOROSULFONIC ACID SULFATION	5	5	2
2843	2843	SURFACE ACTIVE AGENTS, FINISHING AGENTS, 417		N	NEUTRAL SULFURIC ACID ESTERS & SULFONIC	5	5	4
2844	2844	PERFUMES, COSMETICS & OTHER TOILET PREPA	417	H	MANUFACTURING OF LIQUID SOAPS	5	5	1
2844	2844	PERFUMES, COSMETICS & OTHER TOILET PREPA		NR	OTHER PREPARATIONS, NEC	5	5	99
2851	2851	PAINTS/VARNISHES/LACQUERS/ENAMELS & ALLI		NR	OTHER PAINTS	8	8	99
2851	2851	PAINTS/VARNISHES/LACQUERS/ENAMELS & ALLI	446	A	OIL-BASE SOLVENT WASH PAINT	3	3	0
2861	2861	GUM AND WOOD CHEMICALS	454	A	CHAR & CHARCOAL BRIQUETTES	3	3	1

APPENDIX A
SIC Code Cross Reference
and Total and Human Health Toxicity Number

1972/ 1977	1987		CFR		Human	Total	Industry	
SIC	SIC	1987	CFR	Sub-	Sub-part title	Health	Toxicity	Subcat
Code	Code	Title	Part	Part		Toxicity	Number	Number
2861	2861	GUM AND WOOD CHEMICALS	454	B	GUM ROSIN & TURPENTINE	3	3	3
2861	2861	GUM AND WOOD CHEMICALS		NR	NON-CONTACT COOLING WATER ONLY	1	1	99
2861	2861	GUM AND WOOD CHEMICALS	454	D	TALL OIL, ROSIN, PITCH, FATTY ACIDS	6	6	6
2861	2861	GUM AND WOOD CHEMICALS	454	E	ESSENTIAL OILS	3	3	2
2861	2861	GUM AND WOOD CHEMICALS	454	F	ROSIN BASED DERIVATIVES	6	6	4
2861	2861	GUM AND WOOD CHEMICALS	454	C	WOOD ROSIN, TURPENTINE & PINE OIL	6	6	7
2865	2865	CYCLIC CRUDES INTERM., DYES & ORGANIC PI	414/416	F	COMMODITY	8	9	1
2865	2865	CYCLIC CRUDES INTERM., DYES & ORGANIC PI		NR	NON-CONTACT COOLING WATER ONLY	1	1	99
2865	2865	CYCLIC CRUDES INTERM., DYES & ORGANIC PI	414/416	G	BULK	8	9	2
2865	2865	CYCLIC CRUDES INTERM., DYES & ORGANIC PI	414/416	H	SPECIALTY	8	9	3
2869	2869	INDUSTRIAL ORGANIC CHEMICALS, NEC	414/416	H	SPECIALTY	8	9	3
2869	2869	INORGANIC CHEMICALS NEC	455	A	ORGANIC PESTICIDE CHEMICALS MFG.	8	10	152
2869	2819	INDUSTRIAL ORGANIC CHEMICALS NEC		NR		10	10	99
2869	2869	INDUSTRIAL ORGANIC CHEMICALS, NEC	414/416	F	COMMODITY	8	9	1
2869	2869	INDUSTRIAL ORGANIC CHEMICALS, NEC	414/416	G	BULK	8	9	2
2869	2869	INORGANIC CHEMICALS NEC	455	B	METALLO-ORGANIC PESTICIDES	8	10	154
2873	2873	NITROGEN FERTILIZERS	418	B	AMMONIA	1	1	1
2873	2873	NITROGEN FERTILIZERS	418	C	UREA	1	1	2
2873	2873	NITROGEN FERTILIZERS	418	D	AMMONIUM NITRATE	1	1	3
2873	2873	NITROGEN FERTILIZERS	418	E	NITRIC ACID	1	1	4
2873	2873	NITROGEN FERTILIZERS	418	F	AMMONIUM SULFATE PRODUCTION	1	1	5
2874	2874	PHOSPHATIC FERTILIZERS	418	A	PHOSPHATE	1	1	0
2874	2874	PHOSPHATIC FERTILIZERS		NR	NON-CONTACT COOLING WATER ONLY	1	1	99
2875	2875	FERTILIZERS, MIXING ONLY	418	G	MIXED & BLEND FERTILIZER PRODUCTION	1	1	0
2879	2879	PESTICIDES & AGRICULTURAL CHEMICALS NEC	455	C	PESTICIDE CHEMICALS FORMULATING	10	10	0
2891	2891	ADHESIVES AND SEALANTS		NR	ADHESIVES & SEALANTS	8	8	99
2892	2892	EXPLOSIVES	457	A	MANUFACTURE OF EXPLOSIVES	6	6	1
2892	2892	EXPLOSIVES	457	C	EXPLOSIVES LOAD, ASSEMBLE & PACK PLANTS	6	6	3
2892	2892	EXPLOSIVES		NR	NON-CONTACT COOLING WATER ONLY	1	1	99
2893	2893	PRINTING INK	447	A	OIL-BASED SOLVENT WASH INK	3	3	0
2893	2893	PRINTING INK		NR	OTHER INKS	8	8	99
2895	2895	CARBON BLACK	458	A	CARBON BLACK FURNACE PROCESS	5	5	2
2895	2895	CARBON BLACK	458	C	CARBON BLACK CHANNEL PROCESS	3	3	1
2895	2895	CARBON BLACK	458	D	CARBON BLACK LAMP PROCESS	3	3	3
2895	2895	CARBON BLACK		NR	NON-CONTACT COOLING WATER ONLY	1	1	99
2899	2899	CHEMICALS AND CHEMICAL PREPARATIONS, NEC	417	B	FATTY ACID MFG. BY FAT SPLITTING	5	5	1
2899	2899	CHEMICALS AND CHEMICAL PREPARATIONS, NEC	424	F	ROSIN-BASED DERIVATIVES	6	6	4
2899	2899	CHEMICALS AND CHEMICAL PREPARATIONS, NEC	454	D	TALL OIL ROSIN, PITCH & FATTY ACIDS	6	6	2
2899	2899	CHEMICALS AND CHEMICAL PREPARATIONS, NEC	457	C	EXPLOSIVES LOAD, ASSEMBLE & PACK PLANTS	6	6	5
2899	2899	CHEMICALS AND CHEMICAL PREPARATIONS, NEC		NR	OTHER CHEMICAL PREPARATIONS NEC	6	6	99
2899	2899	CHEMICALS AND CHEMICAL PREPARATIONS, NEC		NR	NON-CONTACT COOLING WATER ONLY	1	1	99
2899	2899	CHEMICALS AND CHEMICAL PREPARATIONS, NEC	454	E	ESSENTIAL OILS	3	3	3
2911	2911	PETROLEUM REFINING	419	A	TOPPING	3	8	1
2911	2911	PETROLEUM REFINING	419	B	CRACKING	3	8	2
2911	2911	PETROLEUM REFINING	419	C	PETROCHEMICAL	3	8	3
2911	2911	PETROLEUM REFINING	419	D	LUBE	3	8	4
2911	2911	PETROLEUM REFINING	419	E	INTEGRATED	3	8	5
2911	2911	PETROLEUM REFINING		NR	NON-CONTACT COOLING WATER ONLY	1	1	99
2911	2911	PETROLEUM REFINING	443	A	ASPHALT EMULSION	8	8	6
2951	2951	PAVING MIXTURES AND BLOCKS	443	A	ASPHALT EMULSION	8	8	1
2951	2951	PAVING MIXTURES AND BLOCKS	443	B	ASPHALT CONCRETE	8	8	2
2951	2951	PAVING MIXTURES AND BLOCKS		NR	NON-CONTACT COOLING WATER ONLY	1	1	99
2952	2952	ASPHALT FELT AND COATINGS	443	C	ASPHALT ROOFING	8	8	1
2952	2952	ASPHALT FELT AND COATINGS	443	D	LINOLEUM & PRINTED ASPHALT FELT	8	8	2

APPENDIX A
SIC Code Cross Reference
and Total and Human Health Toxicity Number

1972/ 1977	1987		CFR	Sub-	Sub-part title	Human	Total	Indust
SIC	SIC	1987	CFR	Sub-		Health	Toxicity	Subcat
Code	Code	Title	Part	Part		Number	Number	Number
2952	2952	ASPHALT FELT AND COATINGS		NR	NON-CONTACT COOLING WATER ONLY	1	1	99
2992	2992	LUBRICATING OILS AND GREASES		NR	LUBE OIL RE-REFINING	8	8	99
2992	2992	LUBRICATING OILS AND GREASES		NR	WASTE OIL RECYCLING	10	10	99
2992	2992	LUBRICATING OILS AND GREASES		NR	OTHER OILS & GREASES NEC	5	5	99
2992	2992	LUBRICATING OILS AND GREASES		NR	NON-CONTACT COOLING WATER ONLY	1	1	99
2999	2999	PRODUCTS OF PETROLEUM AND COAL, NEC		NR		5	5	99
3011	3011	TIRES AND INNER TUBES	428	A	TIRE & INNER TUBE PLANTS	6	6	0
3011	3011	TIRES AND INNER TUBES		NR	NON-CONTACT COOLING WATER ONLY	1	1	99
3021	3021	RUBBER AND PLASTICS FOOTWEAR	428	E	SM-SIZED GEN MOLDED, EXTR&FABR RUBBERPLNT	5	5	4
3021	3021	RUBBER AND PLASTICS FOOTWEAR	428	F	MD-SIZED GEN MOLDED, EXTR&FABR RUBBERPLNT	6	6	3
3021	3021	RUBBER AND PLASTICS FOOTWEAR	428	G	LG-SIZED GEN MOLDED, EXTR&FABR RUBBERPLNT	6	6	1
3021	3021	RUBBER AND PLASTICS FOOTWEAR	428	J	LATEX-DIPPED, MOLDED, EXTRUDED GOODS	5	5	2
3021	3021	RUBBER AND PLASTICS FOOTWEAR		NR	NON-CONTACT COOLING WATER ONLY	1	1	99
3021	3021	RUBBER AND PLASTICS FOOTWEAR	463	A	CONTACT COOLING & HEATING WATER (PLASTICS)	4	6	5
3021	3021	RUBBER AND PLASTICS FOOTWEAR	463	B	CLEANING (PLASTICS)	5	6	6
3031	3069	RECLAIMED RUBBER	428	H	WET DIGESTION RECLAIM	8	8	2
3031	3069	RECLAIMED RUBBER	428	I	PAN, DRY DIGESTION, & MECHANICAL RECLAIM	8	8	1
3031	3069	RECLAIMED RUBBER		NR	NON-CONTACT COOLING WATER ONLY	1	1	99
3041	3052	RUBBER & PLASTICS HOSE AND BELTING	428	E	SM-SIZED GEN MOLDED, EXTR&FABR RUBBERPLT	5	5	3
3041	3052	RUBBER & PLASTICS HOSE AND BELTING	428	F	MD-SIZED GEN MOLDED, EXTR&FABR RUBBERPLT	6	6	2
3041	3052	RUBBER & PLASTICS HOSE AND BELTING	428	G	LG-SIZED GEN MOLDED, EXTR&FABR RUBBERPLT	6	6	1
3041	3052	RUBBER & PLASTICS HOSE AND BELTING		NR	NON-CONTACT COOLING WATER ONLY	1	1	99
3041	3052	RUBBER & PLASTICS HOSE AND BELTING	463	A	CONTACT COOLING & HEATING WATER	4	6	4
3041	3052	RUBBER & PLASTICS HOSE AND BELTING	463	B	CLEANING WATER	5	6	5
3069	3061	FABRICATED RUBBER PRODUCTS NEC	428	E	SM-SIZED GEN MOLDED, EXTR&FABR RUBBERPLT	5	5	1
3069	3061	FABRICATED RUBBER PRODUCTS, NEC	428	F	MD-SIZED GEN MOLDED, EXTR&FABR RUBBERPLT	6	6	2
3069	3061	FABRICATED RUBBER PRODUCTS, NEC	428	G	LG-SIZED GEN MOLDED, EXTR&FABR RUBBERPLT	6	6	3
3069	3069	FABRICATED RUBBER PRODUCTS, NEC	428	G	LG-SIZED GEN MOLDED, EXTR&FABR RUBBERPLT	6	6	4
3069	3069	FABRICATED RUBBER PRODUCTS, NEC	428	F	MD-SIZED GEN MOLDED, EXTR&FABR RUBBERPLT	6	6	5
3069	3069	FABRICATED RUBBER PRODUCTS, NEC	428	E	SM-SIZED GEN MOLDED, EXTR&FABR RUBBERPLT	5	5	6
3079	3081	MISCELLANEOUS PLASTICS PRODUCTS	463	A	CONTACT COOLING & HEATING WATER	4	6	1
3079	3081	MISCELLANEOUS PLASTIC PRODUCTS	463	B	CLEANING WATER	5	6	2
3079	3083	MISCELLANEOUS PLASTIC PRODUCTS		NR	NON CONTACT COOLING WATER ONLY	1	1	99
3079	3081	MISCELLANEOUS PLASTIC PRODUCTS	463	C	FINISHING WATER	6	8	3
3079	3083	MISCELLANEOUS PLASTIC PRODUCTS	463	A	CONTACT COOLING & HEATING WATER	4	6	4
3079	3083	MISCELLANEOUS PLASTIC PRODUCTS	463	B	CLEANING WATER	5	6	5
3079	3083	MISCELLANEOUS PLASTIC PRODUCTS	463	C	FINISHING WATER	6	8	6
3079	3081	MISCELLANEOUS PLASTIC PRODUCTS		NR	NON CONTACT COOLING WATER ONLY	1	1	99
3079	3084	MISCELLANEOUS PLASTIC PRODUCTS	463	A	CONTACT COOLING & HEATING WATER	4	6	7
3079	3084	MISCELLANEOUS PLASTIC PRODUCTS	463	B	CLEANING WATER	5	6	8
3079	3084	MISCELLANEOUS PLASTIC PRODUCTS	463	C	FINISHING WATER	6	8	9
3079	3084	MISCELLANEOUS PLASTIC PRODUCTS		NR	NON CONTACT COOLING WATER	1	1	99
3079	3085	MISCELLANEOUS PLASTIC PRODUCTS	463	A	CONTACT COOLING & HEATING WATER	4	6	10
3079	3085	MISCELLANEOUS PLASTIC PRODUCTS	463	B	CLEANING WATER	5	6	12
3079	3089	MISCELLANEOUS PLASTIC PRODUCTS		NR	NON CONTACT COOLING WATER	1	1	99
3079	3432	MISCELLANEOUS PLASTIC PRODUCTS	463	A	CONTACT COOLING & HEATING WATER	4	6	29
3079	3085	MISCELLANEOUS PLASTIC PRODUCTS		NR	NON CONTACT COOLING WATER ONLY	1	1	99
3079	3432	MISCELLANEOUS PLASTIC PRODUCTS	463	B	CLEANING WATER	5	6	30
3079	3082	MISCELLANEOUS PLASTIC PRODUCTS	463	B	CLEANING WATER	5	6	15
3079	3432	MISCELLANEOUS PLASTIC PRODUCTS	463	C	FINISHING WATER	6	8	31
3079	3082	MISCELLANEOUS PLASTIC PRODUCTS		NR	NON CONTACT COOLING WATER ONLY	1	1	99
3079	3432	MISCELLANEOUS PLASTIC PRODUCTS		NR	NON CONTACT COOLING WATER ONLY	1	1	99
3079	3086	MISCELLANEOUS PLASTIC PRODUCTS	463	B	CLEANING WATER	5	6	18
3079	3086	MISCELLANEOUS PLASTIC PRODUCTS		NR	NON CONTACT COOLING WATER ONLY	1	1	99

APPENDIX A
SIC Code Cross Reference
and Total and Human Health Toxicity Number

1972/ 1977	1987		CFR			Human	Total	Industr
SIC	SIC	1987	CFR	Sub-	Sub-part title	Toxicity	Toxicity	Subcat
Code	Code	Title	Part	Part		Number	Number	Number
3079	3089	MISCELLANEOUS PLASTIC PRODUCTS	463	A	CONTACT COOLING & HEATING WATER	4	6	26
3079	3089	MISCELLANEOUS PLASTIC PRODUCTS	463	B	CLEANING WATER	5	6	27
3079	3087	MISCELLANEOUS PLASTIC PRODUCTS	463	C	FINISHING WATER	6	8	22
3079	3089	MISCELLANEOUS PLASTIC PRODUCTS	463	C	FINISHING WATER	6	8	28
3079	3088	MISCELLANEOUS PLASTIC PRODUCTS	463	A	CONTACT COOLING & HEATING WATER	4	6	23
3079	3085	MISCELLANEOUS PLASTIC PRODUCTS	463	C	FINISHING WATER	6	8	13
3079	3088	MISCELLANEOUS PLASTIC PRODUCTS	463	C	FINISHING WATER	6	8	25
3079	3087	MISCELLANEOUS PLASTIC PRODUCTS	463	B	CLEANING WATER	5	6	21
3079	3087	MISCELLANEOUS PLASTIC PRODUCTS		NR	NON CONTACT COOLING WATER ONLY	1	1	99
3079	3088	MISCELLANEOUS PLASTIC PRODUCTS	463	B	CLEANING WATER	5	6	24
3079	3088	MISCELLANEOUS PLASTIC PRODUCTS		NR	NON CONTACT COOLING WATER ONLY	1	1	99
3079	3082	MISCELLANEOUS PLASTIC PRODUCTS	463	A	CONTACT COOLING & HEATING WATER	4	6	14
3079	3082	MISCELLANEOUS PLASTIC PRODUCTS	463	C	FINISHING WATER	6	8	16
3079	3086	MISCELLANEOUS PLASTIC PRODUCTS	463	A	CONTACT COOLING & HEATING WATER	4	6	17
3079	3086	MISCELLANEOUS PLASTIC PRODUCTS	463	C	FINISHING WATER	6	8	19
3079	3087	MISCELLANEOUS PLASTIC PRODUCTS	463	A	CONTACT COOLING & HEATING WATER	4	6	20
3111	3111	LEATHER TANNING AND FINISHING	425	A	HAIR PULP, CHROME TAN,RETAN-WET FINISH	7	8	1
3111	3111	LEATHER TANNING AND FINISHING	425	I	RETAIN-WET FINISH - SPLITS	1	6	9
3111	3111	LEATHER TANNING AND FINISHING		NR	NON-CONTACT COOLING WATER ONLY	1	1	99
3111	3111	LEATHER TANNING AND FINISHING	425	C	HAIR SAVE,NOM-CHROME TAN,RETAN-WET FINIS	5	9	3
3111	3111	LEATHER TANNING AND FINISHING	425	E	NO BEAMHOUSE	4	10	4
3111	3111	LEATHER TANNING AND FINISHING	425	G	SHEARLING	4	7	6
3111	3111	LEATHER TANNING AND FINISHING	425	H	PIGSKIN	4	10	8
3111	3111	LEATHER TANNING AND FINISHING	425	B	HAIR SAVE, CHROME TAN,RETAN-WET FINISH	3	7	2
3111	3111	LEATHER TANNING AND FINISHING	425	D	RETAN-WET FINISH SIDES	1	6	5
3111	3111	LEATHER TANNING AND FINISHING	425	F	THROUGH-THE-BLUE	1	10	7
3131	3131	BOOT & SHOE CUT STOCK & FINDINGS		NR		1	1	99
3142	3142	HOUSE SLIPPERS		NR		1	1	99
3143	3143	MEN'S FOOTWEAR, EXCEPT ATHLETIC		NR		1	1	99
3144	3144	WOMEN'S FOOTWEAR, EXCEPT ATHLETIC		NR		1	1	99
3149	3149	FOOTWEAR, EXCEPT RUBBER NEC		NR		1	1	99
3151	3151	LEATHER GLOVES AND MITTENS		NR		1	1	99
3161	3161	LUGGAGE		NR		1	1	99
3171	3171	WOMEN'S HANDBAGS AND PURSES		NR		1	1	99
3172	3172	PERSONAL LEATHER GOODS, EXCEPT WOMEN'S H		NR		1	1	99
3199	3199	LEATHER GOODS NEC		NR		1	1	99
3211	3211	FLAT GLASS	426	B	SHEET GLASS MFG	1	1	1
3211	3211	FLAT GLASS	426	C	ROLLED GLASS MFG	1	1	2
3211	3211	FLAT GLASS	426	D	PLATE GLASS MFG	1	1	3
3211	3211	FLAT GLASS	426	E	FLOAT GLASS MFG	1	1	4
3211	3211	FLAT GLASS	426	F	AUTOMOTIVE GLASS TEMPERING	1	1	5
3211	3211	FLAT GLASS	426	G	AUTOMOTIVE GLASS LAMINATING	1	1	6
3221	3221	GLASS CONTAINERS	426	H	GLASS CONTAINER MFG	1	1	0
3229	3229	PRESSED & BLOWN GLASS & GLASSWARE NEC	426	I	MACHINE PRESSED & BLOWN GLASS MFG	1	1	1
3229	3229	PRESSED & BLOWN GLASS & GLASSWARE NEC	426	J	GLASS TUBING (DANNER) MFG	1	1	2
3229	3229	PRESSED & BLOWN GLASS & GLASSWARE NEC	426	K	TELEVISION PICTURE TUBE ENVELOPE MFG	1	1	3
3229	3229	PRESSED & BLOWN GLASS & GLASSWARE NEC	426	L	INCANDESCENT LAMP ENVELOPE MFG	1	1	4
3229	3229	PRESSED & BLOWN GLASS & GLASSWARE NEC	426	M	HAND PRESSED & BLOWN GLASS MFG	1	1	5
3231	3231	GLASS PRODUCTS MADE OF PURCHASED GLASS	426	F	AUTOMOTIVE GLASS TEMPERING	1	1	1
3231	3231	GLASS PRODUCTS MADE OF PURCHASED GLASS	426	G	AUTOMOTIVE GLASS LAMINATING	1	1	2
3241	3241	CEMENT, HYDRAULIC	411	A	NONLEACHING	1	1	1
3241	3241	CEMENT, HYDRAULIC	411	B	LEACHING	1	1	2
3241	3241	CEMENT, HYDRAULIC	411	C	MATERIALS STORAGE PILES RUNOFF	1	1	3
3251	3251	BRICK AND STRUCTURAL CLAY TILE		NR		1	1	99

APPENDIX A
SIC Code Cross Reference
and Total and Human Health Toxicity Number

1972/ 1977	1987		CFR		Human	Total	Industri
SIC	SIC	1987	CFR	Sub-	Health	Toxicity	Subcat
Code	Code	Title	Part	Part	Toxicity	Number	Number
				Sub-part	Number	Number	Number
				title			
3253	3253	CERAMIC WALL AND FLOOR TILE		NR	1	1	99
3255	3255	CLAY REFRACTORIES		NR	1	1	99
3259	3259	STRUCTURAL CLAY PRODUCTS NEC		NR	1	1	99
3261	3261	VITREOUS CHINA PLUMBING FIXTURES, ETC.		NR	1	1	99
3262	3262	VITREOUS CHINA TABLE & KITCHEN ARTICLES		NR	1	1	99
3263	3263	FINE EARTHENWARE		NR	1	1	99
3264	3264	PORCELAIN ELECTRICAL SUPPLIES		NR	1	1	99
3269	3269	POTTERY PRODUCTS, NEC		NR	1	1	99
3271	3271	CONCRETE BLOCK & BRICK		NR	1	1	99
3272	3272	CONCRETE PRODUCTS EXCEPT BLOCK & BRICK		NR	1	1	99
3273	3273	READY-MIXED CONCRETE		NR	1	1	99
3274	3274	LIME	415	E	1	1	0
3274	3274	LIME		NR	1	1	99
3275	3275	GYPHUM PRODUCTS		NR	1	1	99
3281	3281	CUT STONE & STONE PRODUCTS	436	A	1	1	0
3291	3291	ABRASIVE PRODUCTS		NR	1	1	99
3292	3292	ASBESTOS PRODUCTS	427	A	1	1	1
3292	3292	ASBESTOS PRODUCTS	427	B	1	1	2
3292	3292	ASBESTOS PRODUCTS	427	I	1	1	7
3292	3292	ASBESTOS PRODUCTS	427	F	1	1	4
3292	3292	ASBESTOS PRODUCTS	427	G	1	1	5
3292	3292	ASBESTOS PRODUCTS	427	H	1	1	6
3292	3292	ASBESTOS PRODUCTS	427	E	1	1	3
3292	3292	ASBESTOS PRODUCTS	427	J	1	1	8
3292	3292	ASBESTOS PRODUCTS	427	K	1	1	9
3293	3053	GASKETS, PACKING & SEALING DEVICES	427	K	1	1	4
3293	3053	GASKETS, PACKING & SEALING DEVICES	428	E	5	5	3
3293	3053	GASKETS, PACKING & SEALING DEVICES	428	F	6	6	2
3293	3053	GASKETS, PACKING & SEALING DEVICES	428	G	6	6	1
3293	3053	GASKETS, PACKING & SEALING DEVICES		NR	1	1	99
3295	3295	MINERALS & EARTHS, GROUND OR OTHERWISE T	436	J	1	1	1
3295	3295	MINERALS & EARTHS, GROUND OR OTHERWISE T	436	W	1	1	2
3295	3295	MINERALS & EARTHS, GROUND OR OTHERWISE T	436	X	1	1	3
3295	3295	MINERALS & EARTHS, GROUND OR OTHERWISE T	436	AG	1	1	4
3295	3295	MINERALS & EARTHS, GROUND OR OTHERWISE T	436	AJ	1	1	5
3295	3295	MINERALS & EARTHS, GROUND OR OTHERWISE T	436	AL	1	1	6
3295	3295	MINERALS & EARTHS, GROUND OR OTHERWISE T		NR	1	1	99
3296	3296	MINERAL WOOL	426	A	1	1	1
3296	3296	MINERAL WOOL		NR	1	1	99
3299	3299	NONMETALLIC MINERAL PRODUCTS, NEC		NR	1	1	99
3312	3312	BLAST FURNACES, STEEL WORKS & ROLLING MI	420	A	10	10	6
3312	3312	BLAST FURNACES, STEEL WORKS & ROLLING MI	420	B	9	9	23
3312	3312	BLAST FURNACES, STEEL WORKS & ROLLING MI	420	C	10	10	5
3312	3312	BLAST FURNACES, STEEL WORKS & ROLLING MI	420	D	10	10	1
3312	3312	BLAST FURNACES, STEEL WORKS & ROLLING MI	420	E	3	9	24
3312	3312	BLAST FURNACES, STEEL WORKS & ROLLING MI	420	F	1	7	10
3312	3312	BLAST FURNACES, STEEL WORKS & ROLLING MI	420	G	1	3	16
3312	3312	BLAST FURNACES, STEEL WORKS & ROLLING MI		NR	1	1	99
3312	3312	BLAST FURNACES, STEEL WORKS & ROLLING MI	420	H	9	10	22
3312	3312	BLAST FURNACES, STEEL WORKS & ROLLING MI	420	J	10	10	7
3312	3312	BLAST FURNACES, STEEL WORKS & ROLLING MI	420	K	8	8	9
3312	3312	BLAST FURNACES, STEEL WORKS & ROLLING MI	420	L	10	10	13
3312	3312	BLAST FURNACES, STEEL WORKS & ROLLING MI	420	I	10	10	20
3313	3313	ELECTROMETALLURGICAL PRODUCTS	420	D	10	10	2

APPENDIX A
SIC Code Cross Reference
and Total and Human Health Toxicity Number

1972/ 1977	1987		CFR		Human	Total	Industry	
SIC	SIC	1987	CFR	Sub-	Health	Toxicity	Subcat	
Code	Code	Title	Part	Part	Number	Number	Number	
				Sub-part				
				title				
3313	3313	ELECTROMETALLURGICAL PRODUCTS	420	F	CONTINUOUS CASTING	1	7	3
3313	3313	ELECTROMETALLURGICAL PRODUCTS		NR	NON-CONTACT COOLING WATER ONLY	1	1	99
3313	3313	ELECTROMETALLURGICAL PRODUCTS	424	A	OPEN ELECTRIC FURNACES W/WET APC	5	5	4
3313	3313	ELECTROMETALLURGICAL PRODUCTS	424	B	COVERED ELECTRIC FURNACES W/WET APC	5	5	5
3313	3313	ELECTROMETALLURGICAL PRODUCTS	424	G	ELECTROLYTIC CHROMIUM	5	5	10
3313	3313	ELECTROMETALLURGICAL PRODUCTS	424	D	COVERED CALCIUM CARBIDE FURNACES W/WAPC	5	5	7
3313	3313	ELECTROMETALLURGICAL PRODUCTS	424	E	OTHER CALCIUM CARBIDE FURNACES	5	5	8
3313	3313	ELECTROMETALLURGICAL PRODUCTS	424	F	ELECTROLYTIC MANGANESE PRODUCTS	5	5	9
3313	3313	ELECTROMETALLURGICAL PRODUCTS	424	C	SLAG PROCESSING	5	5	6
3315	3315	STEEL WIRE DRAWING & STEEL NAILS & SPIKE	420	H	SALT BATH DESCALING	9	10	1
3315	3315	STEEL WIRE DRAWING & STEEL NAILS & SPIKE	420	J	COLD FORMING	10	10	3
3315	3315	STEEL WIRE DRAWING & STEEL NAILS & SPIKE	420	K	ALKALINE CLEANING	8	8	4
3315	3315	STEEL WIRE DRAWING & STEEL NAILS & SPIKE	420	I	ACID PICKLING	10	10	2
3316	3316	COLD ROLLED STEEL SHEET, STRIP & BARS	420	J	COLD FORMING	10	10	2
3316	3316	COLD ROLLED STEEL SHEET, STRIP & BARS	420	I	ACID PICKLING	10	10	1
3317	3317	STEEL PIPE AND TUBES	420	H	SALT BATH DESCALING	9	10	2
3317	3317	STEEL PIPE AND TUBES	420	G	HOT FORMING	1	3	1
3317	3317	STEEL PIPE AND TUBES	420	I	ACID PICKLING	10	10	3
3317	3317	STEEL PIPE AND TUBES	420	J	COLD FORMING	10	10	4
3317	3317	STEEL PIPE AND TUBES	420	K	ALKALINE CLEANING	8	8	5
3321	3321	GRAY IRON FOUNDRIES	464	C	FERROUS CASTING	1	9	0
3322	3322	MALLEABLE IRON FOUNDRIES	464	C	FERROUS CASTING	1	9	0
3324	3324	STEEL INVESTMENT FOUNDRIES	464	C	FERROUS CASTING	1	9	0
3325	3325	STEEL FOUNDRIES, NEC	464	C	FERROUS CASTING	1	9	0
3331	3331	PRIMARY SMELTING AND REFINING OF COPPER	421	D	PRIMARY COPPER SMELTING	1	8	1
3331	3331	PRIMARY SMELTING AND REFINING OF COPPER	421	E	PRIMARY ELECTROLYTIC COPPER REFINING	1	8	2
3331	3331	PRIMARY SMELTING AND REFINING OF COPPER	421	I	METALLURGICAL ACID PLANTS	10	10	3
3332	3339	PRIMARY SMELTING AND REFINING OF LEAD	421	G	PRIMARY LEAD	1	6	1
3332	3339	PRIMARY SMELTING AND REFINING OF LEAD	421	I	METALLURGICAL ACID PLANTS	10	10	2
3333	3339	PRIMARY SMELTING AND REFINING OF ZINC	421	H	PRIMARY ZINC	10	10	1
3333	3339	PRIMARY SMELTING AND REFINING OF ZINC	421	I	METALLURGICAL ACID PLANTS	10	10	2
3334	3334	PRIMARY PRODUCTION OF ALUMINUM	421	A	BAUXITE REFINING	10	10	2
3334	3334	PRIMARY PRODUCTION OF ALUMINUM	421	B	PRIMARY ALUMINUM SMELTING	10	10	1
3339	3339	PRIMARY SMELT & REFIN OF NONFERROUS META	421	I	METALLURGICAL ACID PLANTS(MOLYBDENUM)	10	10	36
3339	3339	PRIMARY SMELT & REFIN OF NONFERROUS META	421	J	PRIMARY TUNGSTEN	10	10	33
3339	3339	PRIMARY SMELT & REFIN OF NONFERROUS META	421	K	PRIMARY COLUMBIUM-TANTALUM	10	10	13
3339	3339	PRIMARY SMELT & REFIN OF NONFERROUS META	421	N	PRIMARY ANTIMONY	10	10	3
3339	3339	PRIMARY SMELT & REFIN OF NONFERROUS META	421	O	PRIMARY BERYLLIUM	10	10	6
3339	3339	PRIMARY SMELT & REFIN OF NONFERROUS META	421	P	PRIMARY BORON	10	10	8
3339	3339	PRIMARY SMELT & REFIN OF NONFERROUS META	421	Q	PRIMARY CALCIUM & RUBIDIUM	10	10	11
3339	3339	PRIMARY SMELT & REFIN OF NONFERROUS META	421	R	PRIMARY & SECONDARY GERMANIUM & GALLIUM	10	10	15
3339	3339	PRIMARY SMELT & REFIN OF NONFERROUS META	424	G	ELECTROLYTIC CHROMIUM	8	8	37
3339	3339	PRIMARY SMELT & REFIN OF NONFERROUS META	421	W	PRIMARY NICKEL & COBALT	1	9	22
3339	3339	PRIMARY SMELT & REFIN OF NONFERROUS META		NR	PRIMARY ARSENIC	5	5	99
3339	3339	PRIMARY SMELT & REFIN OF NONFERROUS META		NR	PRIMARY BARIUM	5	5	99
3339	3339	PRIMARY SMELT & REFIN OF NONFERROUS META	421	AC	PRIMARY & SECONDARY TIN	10	10	31
3339	3339	PRIMARY SMELT & REFIN OF NONFERROUS META		NR	PRIMARY BISMUTH	5	5	99
3339	3339	PRIMARY SMELT & REFIN OF NONFERROUS META		NR	PRIMARY URANIUM	8	8	99
3339	3339	PRIMARY SMELT & REFIN OF NONFERROUS META		NR	PRIMARY CALCIUM	5	5	99
3339	3339	PRIMARY SMELT & REFIN OF NONFERROUS META		NR	PRIMARY PLATINUM GROUP	8	8	99
3339	3339	PRIMARY SMELT & REFIN OF NONFERROUS META		NR	PRIMARY & SECONDARY INDIUM	8	8	99
3339	3339	PRIMARY SMELT & REFIN OF NONFERROUS META		NR	PRIMARY SELENIUM	10	10	99
3339	3339	PRIMARY SMELT & REFIN OF NONFERROUS META		NR	PRIMARY LITHIUM	8	8	99
3339	3339	PRIMARY SMELT & REFIN OF NONFERROUS META	421	AA	PRIMARY RARE EARTH METALS	10	10	26

APPENDIX A
SIC Code Cross Reference
and Total and Human Health Toxicity Number

1972/ 1977	1987		CFR			Human		
SIC	SIC	1987	CFR	Sub-	Sub-part title	Health	Total	Industri
Code	Code	Title	Part	Part		Toxicity	Toxicity	Subcat
						Number	Number	Number
3339	3339	PRIMARY SMELT & REFIN OF NONFERROUS META	421	AG	PRIMARY ZIRCONIUM & HAFNIUM	7	10	35
3339	3339	PRIMARY SMELT & REFIN OF NONFERROUS META		NR	PRIMARY CADMIUM	10	10	99
3339	3339	PRIMARY SMELT & REFIN OF NONFERROUS META		NR	PRIMARY TELLURIUM	10	10	99
3339	3339	PRIMARY SMELT & REFIN OF NONFERROUS META	421	AD	PRIMARY & SECONDARY TITANIUM	9	10	32
3339	3339	PRIMARY SMELT & REFIN OF NONFERROUS META		NR	PRIMARY MAGNESIUM	5	5	99
3339	3339	PRIMARY SMELT & REFIN OF NONFERROUS META		NR	NON-CONTACT COOLING WATER ONLY	1	1	99
3339	3339	PRIMARY SMELT & REFIN OF NONFERROUS META	424	F	ELECTROLYTIC MANGANESE PRODUCTS	8	8	36
3339	3339	PRIMARY SMELT & REFIN OF NONFERROUS META	421	U	PRIMARY MOLYBDENUM & RHENIUM	10	10	21
3339	3339	PRIMARY SMELT & REFIN OF NONFERROUS META	421	Y	PRIMARY PRECIOUS METALS & MERCURY	1	10	16
3341	3341	SECONDARY SMELT & REFIN OF NONFERROUS ME	421	C	SECONDARY ALUMINUM SMELTING	1	8	1
3341	3341	SECONDARY SMELT & REFIN OF NONFERROUS ME	421	AB	SECONDARY TANTALUM	10	10	16
3341	3341	SECONDARY SMELT & REFIN OF NONFERROUS ME	421	AE	SECONDARY TUNGSTEN & COBALT	10	10	19
3341	3341	SECONDARY SMELT & REFIN OF NONFERROUS ME	421	L	SECONDARY SILVER-PHOTOGRAPHIC	7	8	15
3341	3341	SECONDARY SMELT & REFIN OF NONFERROUS ME	421	AF	SECONDARY URANIUM	10	10	20
3341	3341	SECONDARY SMELT & REFIN OF NONFERROUS ME	421	M	SECONDARY LEAD	10	10	8
3341	3341	SECONDARY SMELT & REFIN OF NONFERROUS ME		NR	SECONDARY BERYLLIUM	5	5	99
3341	3341	SECONDARY SMELT & REFIN OF NONFERROUS ME	421	T	SECONDARY MERCURY	8	8	10
3341	3341	SECONDARY SMELT & REFIN OF NONFERROUS ME		NR	SECONDARY BABBITT	5	5	99
3341	3341	SECONDARY SMELT & REFIN OF NONFERROUS ME	421	X	SECONDARY NICKEL	8	8	11
3341	3341	SECONDARY SMELT & REFIN OF NONFERROUS ME		NR	SECONDARY BORON	8	8	99
3341	3341	SECONDARY SMELT & REFIN OF NONFERROUS ME	421	F	SECONDARY COPPER	1	8	7
3341	3341	SECONDARY SMELT & REFIN OF NONFERROUS ME	421	S	SECONDARY INDIUM	5	5	23
3341	3341	SECONDARY SMELT & REFIN OF NONFERROUS ME	421	V	SECONDARY MOLYBDENUM & VANADIUM	10	10	24
3341	3341	SECONDARY SMELT & REFIN OF NONFERROUS ME	421	Z	SECONDARY PRECIOUS METALS	10	10	13
3341	3341	SECONDARY SMELT & REFIN OF NONFERROUS ME	421	L	SECONDARY SILVER-NON-PHOTOGRAPHIC	7	8	22
3341	3341	SECONDARY SMELT & REFIN OF NONFERROUS ME		NR	SECONDARY COLUMBIUM	8	8	99
3341	3341	SECONDARY SMELT & REFIN OF NONFERROUS ME		NR	SECONDARY MAGNESIUM	8	8	99
3341	3341	SECONDARY SMELT & REFIN OF NONFERROUS ME		NR	SECONDARY PLUTONIUM	8	8	99
3341	3341	SECONDARY SMELT & REFIN OF NONFERROUS ME		NR	SECONDARY TIN	8	8	99
3341	3341	SECONDARY SMELT & REFIN OF NONFERROUS ME		NR	SECONDARY TITANIUM	8	8	99
3341	3341	SECONDARY SMELT & REFIN OF NONFERROUS ME		NR	SECONDARY ZINC	8	8	99
3341	3341	SECONDARY SMELT & REFIN OF NONFERROUS ME		NR	NON-CONTACT COOLING WATER ONLY	1	1	99
3341	3341	SECONDARY SMELT & REFIN OF NONFERROUS ME		NR	SECONDARY CADMIUM	5	5	99
3351	3351	ROLLING, DRAWING & EXTRUDING OF COPPER	468	A	COPPER FORMING	1	9	1
3351	3351	ROLLING, DRAWING & EXTRUDING OF COPPER	468	B	BERYLLIUM COPPER ALLOY FORMING	1	9	2
3351	3351	ROLLING, DRAWING & EXTRUDING OF COPPER		NR	NON-CONTACT COOLING WATER ONLY	1	1	99
3353	3353	ALUMINUM SHEET, PLATE AND FOIL	464	A	ALUMINUM CASTING	1	8	1
3353	3353	ALUMINUM SHEET, PLATE AND FOIL	467	A	ROLLING WITH HEAT OILS	5	8	2
3353	3353	ALUMINUM SHEET, PLATE AND FOIL	467	B	ROLLING WITH EMULSIONS	4	8	3
3353	3353	ALUMINUM SHEET, PLATE AND FOIL		NR	NON-CONTACT COOLING WATER ONLY	1	1	99
3354	3354	ALUMINUM EXTRUDED PRODUCTS	467	C	EXTRUSION	1	8	2
3354	3354	ALUMINUM EXTRUDED PRODUCTS	467	E	DRAWING WITH HEAT OILS	1	9	3
3354	3354	ALUMINUM EXTRUDED PRODUCTS	467	F	DRAWING WITH EMULSIONS OR SOAPS	4	8	1
3354	3354	ALUMINUM EXTRUDED PRODUCTS		NR	NON-CONTACT COOLING WATER ONLY	1	1	99
3355	3355	ALUMINUM ROLLING & DRAWING NEC	464	A	ALUMINUM CASTING	1	8	1
3355	3355	ALUMINUM ROLLING & DRAWING NEC	467	A	ROLLING WITH HEAT OILS	5	8	2
3355	3355	ALUMINUM ROLLING & DRAWING NEC	467	B	ROLLING WITH EMULSIONS	4	8	3
3355	3355	ALUMINUM ROLLING & DRAWING NEC	467	E	DRAWING WITH HEAT OILS	1	9	4
3355	3355	ALUMINUM ROLLING & DRAWING NEC	467	F	DRAWING WITH EMULSIONS OR SOAPS	4	8	5
3355	3355	ALUMINUM ROLLING & DRAWING NEC		NR	NON-CONTACT COOLING WATER ONLY	1	1	99
3356	3356	ROLLING, DRAWING & EXTRUDING NONFERROUS	471	A	BERYLLIUM FORMING	5	5	1
3356	3356	ROLLING, DRAWING & EXTRUDING NONFERROUS	471	B	LEAD/TIN/BISMUTH FORMING	9	10	2
3356	3356	ROLLING, DRAWING & EXTRUDING NONFERROUS	471	D	NICKEL-COBALT FORMING	8	9	4
3356	3356	ROLLING, DRAWING & EXTRUDING NONFERROUS	471	E	PRECIOUS METALS FORMING	1	10	5

APPENDIX A
SIC Code Cross Reference
and Total and Human Health Toxicity Number

1972/ 1977	1987		CFR		Human	Total	Industry	
SIC	SIC	1987	CFR	Sub-	Sub-part title	Health	Toxicity	Subcat
Code	Code	Title	Part	Part		Number	Number	Number
3356	3356	ROLLING, DRAWING & EXTRUDING NONFERROUS	471	F	REFRACTORY METALS FORMING	1	8	6
3356	3356	ROLLING, DRAWING & EXTRUDING NONFERROUS	471	G	TITANIUM FORMING	3	8	7
3356	3356	ROLLING, DRAWING & EXTRUDING NONFERROUS	471	H	URANIUM FORMING	1	8	8
3356	3356	ROLLING, DRAWING & EXTRUDING NONFERROUS	471	I	ZINC FORMING	1	8	9
3356	3356	ROLLING, DRAWING & EXTRUDING NONFERROUS	471	J	ZIRCONIUM/HAFNIUM FORMING	7	9	10
3356	3356	ROLLING, DRAWING & EXTRUDING NONFERROUS		NR	NON-CONTACT COOLING WATER ONLY	1	1	99
3357	3357	DRAWING & INSULATING OF NONFERROUS WIRE	433	A	METAL FINISHING	1	9	1
3357	3357	DRAWING & INSULATING OF NONFERROUS WIRE	463	A	CONTACT COOLING&HEATING WATER(PLASTICS)	4	6	2
3357	3357	DRAWING & INSULATING OF NONFERROUS WIRE	463	B	CLEANING & FINISHING WATER (PLASTICS)	5	6	3
3357	3357	DRAWING & INSULATING OF NONFERROUS WIRE	467	E	DRAWING WITH HEAT OILS (ALUMINUM)	1	9	4
3357	3357	DRAWING & INSULATING OF NONFERROUS WIRE	467	F	DRAWING W/ EMULSIONS OR SOAPS (ALUMINUM)	4	8	1
3357	3357	DRAWING & INSULATING OF NONFERROUS WIRE	468	A	COPPER FORMING	1	9	6
3357	3357	DRAWING & INSULATING OF NONFERROUS WIRE		NR	NON-CONTACT COOLING WATER ONLY	1	1	99
3361	3363	ALUMINUM FOUNDRIES (CASTING)	464	A	ALUMINUM CASTING	1	8	1
3361	3365	ALUMINUM FOUNDRIES (CASTING)	464	A	ALUMINUM CASTING	1	8	2
3362	3364	BRASS, BRONZE, COPPER, COPPER BASE ALLOY	464	B	COPPER CASTING	5	8	1
3362	3366	BRASS, BRONZE, COPPER, COPPER BASE ALLOY	464	B	COPPER CASTING	5	8	2
3369	3364	NONFERROUS FOUNDRIES (CASTINGS)NEC	464	B	COPPER CASTING	5	8	1
3369	3369	NONFERROUS FOUNDRIES, NEC	464	D	ZINC CASTING	10	10	2
3398	3398	METAL HEAT TREATING	433	A	METAL FINISHING	1	9	0
3399	3399	PRIMARY METAL PRODUCTS, NEC	433	A	METAL FINISHING	1	9	1
3399	3399	PRIMARY METAL PRODUCTS, NEC	471	K	METAL POWDERS	7	9	2
3399	3399	PRIMARY METAL PRODUCTS, NEC		NR	OTHER PRODUCTS	1	1	99
3411	3411	METAL CANS	465	D	CAN MAKING	1	7	0
3412	3412	METAL BARRELS, DRUMS AND PAILS	433	A	METAL FINISHING	1	9	0
3412	3412	METAL BARRELS, DRUMS AND PAILS		NR	DRUM RECYCLING	8	8	99
3412	3412	METAL BARRELS, DRUMS AND PAILS		NR	NO ELECTROPLATING	1	1	99
3421	3421	CUTLERY	433	A	METAL FINISHING	1	9	0
3421	3421	CUTLERY		NR	NO ELECTROPLATING	1	1	99
3423	3423	HAND AND EDGE TOOLS, NEC	433	A	METAL FINISHING	1	9	0
3423	3423	HAND AND EDGE TOOLS, NEC		NR	NO ELECTROPLATING	1	1	99
3425	3425	HAND SAWS AND SAW BLADES	433	A	METAL FINISHING	1	9	1
3429	3429	HARDWARE, NEC	433	A	METAL FINISHING	1	9	0
3429	3429	HARDWARE, NEC		NR	NO ELECTROPLATING	1	1	99
3431	3431	METAL SANITARY WARE	466	B	CAST IRON BASIS MATERIAL	10	10	0
3432	3432	PLUMBING FITTINGS AND BRASS GOODS		NR	NO ELECTROPLATING	1	1	99
3432	3432	PLUMBING FITTINGS AND BRASS GOODS	433	A	METAL FINISHING	1	9	1
3432	3432	PLUMBING FITTINGS AND BRASS GOODS	468	A	COPPER FORMING	1	9	2
3433	3567	HEATING EQUIPMENT, EXCEPT ELECTRIC	433	A	METAL FINISHING	1	9	1
3433	3567	HEATING EQUIPMENT, EXCEPT ELECTRIC		NR	NO ELECTROPLATING	1	1	99
3433	3433	HEATING EQUIPMENT, EXCEPT ELECTRIC	433	A	METAL FINISHING	1	9	2
3433	3433	HEATING EQUIPMENT, EXCEPT ELECTRIC		NR	NO ELECTROPLATING	1	1	99
3441	3441	FABRICATED STRUCTURAL METAL		NR		1	1	99
3442	2431	METAL DOORS, SASH AND TRIM				1	1	1
3442	3442	METAL DOORS, SASH, AND TRIM	433	A	METAL FINISHING	1	9	2
3442	3442	METAL DOORS, SASH, AND TRIM		NR	NO ELECTROPLATING	1	1	99
3443	3443	FABRICATED PLATE WORK (BOILER SHOPS)		NR		1	1	99
3444	3444	SHEET METAL WORK		NR		1	1	99
3444	3449	SHEET METAL WORK		NR		1	1	99
3446	3446	ARCHITECTURAL METAL WORK		NR		1	1	99
3448	3448	PREFABRICATED METAL BUILDINGS		NR		1	1	99
3449	3449	MISCELLANEOUS METAL WORK		NR		1	1	99
3451	3451	SCREW MACHINE PRODUCTS	433	A	METAL FINISHING	1	9	0
3451	3451	SCREW MACHINE PRODUCTS		NR	NO ELECTROPLATING	1	1	99

APPENDIX A
SIC Code Cross Reference
and Total and Human Health Toxicity Number

1972/ 1977	1987	1987	CFR	CFR	Sub-part title	Human	Total	Industr
SIC	SIC	Title	Part	Sub-Part		Toxicity	Toxicity	Subcat
Code	Code					Number	Number	Number
3452	3452	BOLTS, NUTS, RIVETS AND WASHERS	433	A	METAL FINISHING	1	9	0
3452	3452	BOLTS, NUTS, RIVETS AND WASHERS		NR	NO ELECTROPLATING	1	1	99
3462	3462	IRON AND STEEL FORGINGS	433	A	METAL FINISHING	1	9	0
3462	3462	IRON AND STEEL FORGINGS		NR	NO ELECTROPLATING	1	1	99
3463	3463	NONFERROUS FORGINGS	433	A	METAL FINISHING	1	9	3
3463	3463	NONFERROUS FORGINGS	467	D	FORGING (ALUMINUM)	5	5	1
3463	3463	NONFERROUS FORGINGS	468	A	COPPER FORMING	1	9	2
3463	3463	NONFERROUS FORGINGS	471	A	BERYLLIUM FORMING	5	5	4
3463	3463	NONFERROUS FORGINGS	471	B	LEAD/TIN/BISMUTH FORMING	9	10	5
3463	3463	NONFERROUS FORGINGS	471	C	MAGNESIUM FORMING	5	5	6
3463	3463	NONFERROUS FORGINGS	471	D	NICKEL-COBALT FORMING	8	9	7
3463	3463	NONFERROUS FORGINGS	471	E	PRECIOUS METALS FORMING	1	10	8
3463	3463	NONFERROUS FORGINGS	471	J	ZIRCONIUM/HAFNIUM FORMING	7	9	13
3463	3463	NONFERROUS FORGINGS	471	G	TITANIUM FORMING	3	8	10
3463	3463	NONFERROUS FORGINGS	471	H	URANIUM FORMING	1	8	11
3463	3463	NONFERROUS FORGINGS	471	I	ZINC FORMING	1	8	12
3463	3463	NONFERROUS FORGINGS	471	F	REFRACTORY METALS FORMING	1	8	9
3463	3463	NONFERROUS FORGINGS		NR	NON-CONTACT COOLING WATER ONLY	1	1	99
3465	3465	AUTOMOTIVE STAMPINGS	433	A	METAL FINISHING	1	9	0
3465	3465	AUTOMOTIVE STAMPINGS		NR	NO ELECTROPLATING	1	1	99
3466	3466	CROWNS AND CLOSURES	433	A	METAL FINISHING	1	9	0
3466	3466	CROWNS AND CLOSURES		NR	NO ELECTROPLATING	1	1	99
3469	3469	METAL STAMPINGS, NEC		NR		1	1	99
3469	3469	METAL STAMPINGS, NEC		NR		1	1	99
3471	3471	PLATING AND POLISHING	433	A	METAL FINISHING	1	9	0
3479	3479	METAL COATING AND ALLIED SERVICES	420	L	HOT COATING	10	10	5
3479	3479	METAL COATING AND ALLIED SERVICES	433	A	METAL FINISHING	1	9	4
3479	3479	METAL COATING AND ALLIED SERVICES		NR	NO ELECTROPLATING/COATING	1	1	99
3479	3479	METAL COATING AND ALLIED SERVICES	465	A	STEEL BASIS MATERIAL COATING	10	10	2
3479	3479	METAL COATING AND ALLIED SERVICES	465	B	GALVANIZED BASIS MATERIAL COATING	10	10	3
3479	3479	METAL COATING AND ALLIED SERVICES	465	C	ALUMINUM BASIS MATERIAL COATING	10	10	1
3482	3482	SMALL ARMS AMMUNITION	433	A	METAL FINISHING	1	9	1
3482	3482	SMALL ARMS AMMUNITION	457	C	EXPLOSIVES LOAD, ASSEMBLE & PACK PLANTS	6	6	2
3482	3482	SMALL ARMS AMMUNITION		NR	NO ELECTROPLATING/EXPLOSIVES	1	1	99
3482	3482	SMALL ARMS AMMUNITION	463	A	CONTACT COOLING&HEATING WATER(PLASTICS)	4	6	3
3482	3482	SMALL ARMS AMMUNITION	463	B	CLEANING WATER (PLASTICS)	5	6	4
3483	3483	AMMUNITION, EXC. FOR SMALL ARMS, NEC	433	A	METAL FINISHING	1	9	1
3483	3483	AMMUNITION, EXC. FOR SMALL ARMS, NEC	457	C	EXPLOSIVES LOAD, ASSEMBLE & PACK PLANTS	6	6	2
3483	3483	AMMUNITION, EXC. FOR SMALL ARMS, NEC		NR	NO ELECTROPLATING/EXPLOSIVES	1	1	99
3484	3484	SMALL ARMS	433	A	METAL FINISHING	1	9	0
3484	3484	SMALL ARMS		NR	NO ELECTROPLATING	1	1	99
3489	3489	ORDNANCE AND ACCESSORIES, NEC	433	A	METAL FINISHING	1	9	0
3489	3489	ORDNANCE AND ACCESSORIES, NEC		NR	NO ELECTROPLATING	1	1	99
3493	3493	STEEL SPRINGS, EXCEPT WIRE	433	A	METAL FINISHING	1	9	0
3493	3493	STEEL SPRINGS, EXCEPT WIRE		NR	NO ELECTROPLATING	1	1	99
3494	3492	VALVES AND PIPE FITTINGS	433	A	METAL FINISHING	1	9	1
3494	3491	VALVES AND PIPE FITTINGS	433	A	METAL FINISHING	1	9	2
3494	3494	VALVES AND PIPE FITTINGS	433	A	METAL FINISHING	1	9	3
3494	3494	VALVES AND PIPE FITTINGS		NR	NO ELECTROPLATING	1	1	99
3494	3494	VALVES AND PIPE FITTINGS		NR	NO ELECTROPLATING	1	1	99
3494	3492	VALVES AND PIPE FITTINGS		NR	NO ELECTROPLATING	1	1	99
3495	3495	WIRE SPRINGS	433	A	METAL FINISHING	1	9	0
3495	3495	WIRE SPRINGS		NR	NO ELECTROPLATING	1	1	99
3496	3496	MISC. FABRICATED WIRE PRODUCTS	433	A	METAL FINISHING	1	9	0

APPENDIX A
SIC Code Cross Reference
and Total and Human Health Toxicity Number

1972/ 1977	1987		CFR	CFR		Human	Total	Industr
SIC	SIC	1987	CFR	Sub-	Sub-part title	Health	Toxicity	Subcat
Code	Code	Title	Part	Part		Number	Number	Number
3496	3496	MISC. FABRICATED WIRE PRODUCTS		NR	NO ELECTROPLATING	1	1	99
3497	3497	METAL FOIL AND LEAF	468	A	COPPER FORMING	1	9	2
3497	3497	METAL FOIL AND LEAF	471	E	PRECIOUS METALS FORMING	1	10	7
3497	3497	METAL FOIL AND LEAF	465	C	ALUMINUM BASIS MATERIAL COATING	5	5	1
3497	3497	METAL FOIL AND LEAF	471	B	LEAD/TIN/BISMUTH FORMING	9	10	4
3497	3497	METAL FOIL AND LEAF	471	C	MAGNESIUM FORMING	5	5	5
3497	3497	METAL FOIL AND LEAF	471	D	NICKEL-COBALT FORMING	8	9	6
3497	3497	METAL FOIL AND LEAF	471	A	BERYLLIUM FORMING	5	5	3
3497	3497	METAL FOIL AND LEAF	471	F	REFRACTORY METALS FORMING	1	8	8
3497	3497	METAL FOIL AND LEAF	471	G	TITANIUM FORMING	3	8	9
3497	3497	METAL FOIL AND LEAF	471	H	URANIUM FORMING	1	8	10
3497	3497	METAL FOIL AND LEAF	471	I	ZINC FORMING	1	8	11
3497	3497	METAL FOIL AND LEAF	471	J	ZIRCONIUM/HAFNIUM FORMING	7	9	12
3498	3498	FABRICATED PIPE AND FITTINGS	433	A	METAL FINISHING	1	9	0
3498	3498	FABRICATED PIPE AND FITTINGS		NR	NO ELECTROPLATING	1	1	99
3499	3499	FABRICATED METAL PRODUCTS, NEC	433	A	METAL FINISHING	1	9	0
3499	3499	FABRICATED METAL PRODUCTS, NEC		NR	NO ELECTROPLATING	1	1	99
3511	3511	TURBINES AND TURBINE GENERATOR SETS	433	A	METAL FINISHING	1	9	0
3511	3511	TURBINES AND TURBINE GENERATOR SETS		NR	NO ELECTROPLATING	1	1	99
3519	3519	INTERNAL COMBUSTION ENGINES, NEC	433	A	METAL FINISHING	1	9	0
3519	3519	INTERNAL COMBUSTION ENGINES, NEC		NR	NO ELECTROPLATING	1	1	99
3523	3523	FARM MACHINERY AND EQUIPMENT	433	A	METAL FINISHING	1	9	0
3523	3523	FARM MACHINERY AND EQUIPMENT		NR	NO ELECTROPLATING	1	1	99
3524	3524	LAWN AND GARDEN EQUIPMENT	433	A	METAL FINISHING	1	9	0
3524	3524	LAWN AND GARDEN EQUIPMENT		NR	NO ELECTROPLATING	1	1	99
3531	3531	CONSTRUCTION MACHINERY	433	A	METAL FINISHING	1	9	0
3531	3531	CONSTRUCTION MACHINERY		NR	NO ELECTROPLATING	1	1	99
3532	3532	MINING MACHINERY	433	A	METAL FINISHING	1	9	0
3532	3532	MINING MACHINERY		NR	NO ELECTROPLATING	1	1	99
3533	3533	OIL FIELD MACHINERY	433	A	METAL FINISHING	1	9	0
3533	3533	OIL FIELD MACHINERY		NR	NO ELECTROPLATING	1	1	99
3534	3534	ELEVATORS AND MOVING STAIRWAYS	433	A	METAL FINISHING	1	9	0
3534	3534	ELEVATORS AND MOVING STAIRWAYS		NR	NO ELECTROPLATING	1	1	99
3535	3535	CONVEYORS AND CONVEYING EQUIPMENT	433	A	METAL FINISHING	1	9	0
3535	3535	CONVEYORS AND CONVEYING EQUIPMENT		NR	NO ELECTROPLATING	1	1	99
3536	3536	HOISTS, CRANES AND MONORAILS	433	A	METAL FINISHING	1	9	2
3536	3536	HOISTS, CRANES AND MONORAILS	433	A	METAL FINISHING	1	9	1
3536	3537	HOISTS, CRANES AND MONORAILS		NR	NO ELECTROPLATING	1	1	99
3536	3536	HOISTS, CRANES AND MONORAILS		NR	NO ELECTROPLATING	1	1	99
3536	3536	HOISTS, CRANES AND MONORAILS		NR	NO ELECTROPLATING	1	1	99
3536	3531	HOISTS, CRANES AND MONORAILS		NR	NO ELECTROPLATING	1	1	99
3536	3537	HOISTS, CRANES AND MONORAILS	433	A	METAL FINISHING	1	9	3
3537	3537	INDUSTRIAL TRUCKS AND TRACTORS	433	A	METAL FINISHING	1	9	0
3537	3537	INDUSTRIAL TRUCKS AND TRACTORS		NR	NO ELECTROPLATING	1	1	99
3541	3541	MACHINE TOOLS, METAL CUTTING TYPES	433	A	METAL FINISHING	1	9	0
3541	3541	MACHINE TOOLS, METAL CUTTING TYPES		NR	NO ELECTROPLATING	1	1	99
3542	3542	MACHINE TOOLS, METAL FORMING TYPES	433	A	METAL FINISHING	1	9	0
3542	3542	MACHINE TOOLS, METAL FORMING TYPES		NR	NO ELECTROPLATING	1	1	99
3544	3544	SPECIAL DIES, TOOLS, JIGS & FIXTURES	433	A	METAL FINISHING	1	9	0
3544	3544	SPECIAL DIES, TOOLS, JIGS & FIXTURES		NR	NO ELECTROPLATING	1	1	99
3545	3545	MACHINE TOOL ACCESSORIES	433	A	METAL FINISHING	1	9	0
3545	3545	MACHINE TOOL ACCESSORIES		NR	NO ELECTROPLATING	1	1	99
3546	3546	POWER DRIVEN HAND TOOLS	433	A	METAL FINISHING	1	9	0
3546	3546	POWER DRIVEN HAND TOOLS		NR	NO ELECTROPLATING	1	1	99

APPENDIX A
SIC Code Cross Reference
and Total and Human Health Toxicity Number

1972/ 1977 SIC Code	1987 SIC Code	1987 Title	CFR Part	CFR Sub- Part	Sub-part title	Human Health Toxicity Number	Total Toxicity Number	Industr Subcat Number
3547	3547	ROLLING MILL MACHINERY	433	A	METAL FINISHING	1	9	0
3547	3547	ROLLING MILL MACHINERY		NR	NO ELECTROPLATING	1	1	99
3549	3548	METALWORKING MACHINERY, NEC	433	A	METAL FINISHING	1	9	1
3549	3548	METALWORKING MACHINERY, NEC		NR	NO ELECTROPLATING	1	1	99
3549	3559	METALWORKING MACHINERY, NEC	433	A	METAL FINISHING	1	9	2
3549	3559	METALWORKING MACHINERY, NEC		NR	NO ELECTROPLATING	1	1	99
3549	3549	METALWORKING MACHINERY, NEC	433	A	METAL FINISHING	1	9	3
3549	3549	METALWORKING MACHINERY, NEC		NR	NO ELECTROPLATING	1	1	99
3551	3565	FOOD PRODUCTS MACHINERY	433	A	METAL FINISHING	1	9	0
3552	3552	TEXTILE MACHINERY	433	A	METAL FINISHING	1	9	0
3552	3552	TEXTILE MACHINERY		NR	NO ELECTROPLATING	1	1	99
3553	3553	WOODWORKING MACHINERY	433	A	METAL FINISHING	1	9	0
3553	3553	WOODWORKING MACHINERY		NR	NO ELECTROPLATING	1	1	99
3554	3554	PAPER INDUSTRIES MACHINERY	433	A	METAL FINISHING	1	9	0
3554	3554	PAPER INDUSTRIES MACHINERY		NR	NO ELECTROPLATING	1	1	99
3555	3069	PRINTING TRADES MACHINERY	428	E	SM-SIZED GEN MOLDED, EXTR&FABR RUBBERPLT	5	5	1
3555	3069	PRINTING TRADES MACHINERY	428	F	MD-SIZED GEN MOLDED, EXTR&FABR RUBBERPLT	6	6	2
3555	3069	PRINTING TRADES MACHINERY	428	G	LG-SIZED GEN MOLDED, EXTR&FABR RUBBERPLT	6	6	3
3555	3523	PRINTING TRADES MACHINERY		NR	NO ELECTROPLATING	1	1	99
3555	3423	PRINTING TRADES MACHINERY	433	A	METAL FINISHING	1	9	4
3555	3555	PRINTING TRADES MACHINERY	433	A	METAL FINISHING	1	9	5
3555	3555	PRINTING TRADES MACHINERY		NR	NO ELECTROPLATING	1	1	99
3559	3559	SPECIAL INDUSTRY MACHINERY, NEC	433	A	METAL FINISHING	1	9	0
3559	3559	SPECIAL INDUSTRY MACHINERY, NEC		NR	NO ELECTROPLATING	1	1	99
3561	3594	PUMPS AND PUMPING EQUIPMENT		NR	NO ELECTROPLATING	1	1	99
3561	3561	PUMPS AND PUMPING EQUIPMENT	433	A	METAL FINISHING	1	9	0
3561	3561	PUMPS AND PUMPING EQUIPMENT		NR	NO ELECTROPLATING	1	1	99
3561	3594	PUMPS AND PUMPING EQUIPMENT	433	A	METAL FINISHING	1	9	0
3562	3562	BALL AND ROLLER BEARINGS	433	A	METAL FINISHING	1	9	0
3562	3562	BALL AND ROLLER BEARINGS		NR	NO ELECTROPLATING	1	1	99
3563	3563	AIR AND GAS COMPRESSORS	433	A	METAL FINISHING	1	9	0
3563	3563	AIR AND GAS COMPRESSORS		NR	NO ELECTROPLATING	1	1	99
3564	3564	BLOWER AND FANS	433	A	METAL FINISHING	1	9	0
3564	3564	BLOWER AND FANS		NR	NO ELECTROPLATING	1	1	99
3565	3543	INDUSTRIAL PATTERNS	433	A	METAL FINISHING	1	9	0
3565	3543	INDUSTRIAL PATTERNS		NR	NO ELECTROPLATING	1	1	99
3566	3594	SPEED CHANGERS, DRIVES AND GEARS	433	A	METAL FINISHING	1	9	1
3566	3594	SPEED CHANGERS, DRIVES AND GEARS		NR	NO ELECTROPLATING	1	1	99
3566	3566	SPEED CHANGERS, DRIVES AND GEARS		NR	NO ELECTROPLATING	1	1	99
3566	3566	SPEED CHANGERS, DRIVES AND GEARS	433	A	METAL FINISHING	1	9	2
3567	3567	INDUSTRIAL FURNACES AND OVENS	433	A	METAL FINISHING	1	9	0
3567	3567	INDUSTRIAL FURNACES AND OVENS		NR	NO ELECTROPLATING	1	1	99
3568	3568	POWER TRANSMISSION EQUIPMENT, NEC	433	A	METAL FINISHING	1	9	0
3568	3568	POWER TRANSMISSION EQUIPMENT, NEC		NR	NO ELECTROPLATING	1	1	99
3569	3594	GENERAL INDUSTRIAL MACHINERY, NEC	435	A	METAL FINISHING	1	9	1
3569	3594	GENERAL INDUSTRIAL MACHINERY, NEC		NR	NO ELECTROPLATING	1	1	99
3569	3565	GENERAL INDUSTRIAL MACHINERY, NEC		NR	NO ELECTROPLATING	1	1	99
3569	3565	GENERAL INDUSTRIAL MACHINERY, NEC	433	A	METAL FINISHING	1	9	2
3569	3569	GENERAL INDUSTRIAL MACHINERY, NEC	433	A	METAL FINISHING	1	9	3
3569	3569	GENERAL INDUSTRIAL MACHINERY, NEC		NR	NO ELECTROPLATING	1	1	99
3572	3579	TYPEWRITERS	433	A	METAL FINISHING	1	9	0
3572	3579	TYPEWRITERS		NR	NO ELECTROPLATING	1	1	99
3573	3571	ELECTRONIC COMPUTING EQUIPMENT	433	A	METAL FINISHING	1	9	1
3573	3571	ELECTRONIC COMPUTING EQUIPMENT		NR	NO ELECTROPLATING	1	1	99

APPENDIX A
SIC Code Cross Reference
and Total and Human Health Toxicity Number

1972/ 1977 SIC Code	1987 SIC Code	1987 Title	CFR Part	CFR Sub- Part	Sub-part title	Human Health Toxicity Number	Total Toxicity Number	Industr- Subcat Number
3573	3572	ELECTRONIC COMPUTING EQUIPMENT	433	A	METAL FINISHING	1	9	2
3573	3572	ELECTRONIC COMPUTING EQUIPMENT		NR	NO ELECTROPLATING	1	1	99
3573	3575	ELECTRONIC COMPUTING EQUIPMENT		NR	NO ELECTROPLATING	1	1	99
3573	3575	ELECTRONIC COMPUTING EQUIPMENT	433	A	METAL FINISHING	1	9	3
3573	3577	ELECTRONIC COMPUTING EQUIPMENT	433	A	METAL FINISHING	1	9	4
3573	3577	ELECTRONIC COMPUTING EQUIPMENT		NR	NO ELECTROPLATING	1	1	99
3573	3695	ELECTRONIC COMPUTING EQUIPMENT	433	A	METAL FINISHING	1	9	5
3573	3695	ELECTRONIC COMPUTING EQUIPMENT		NR	NO ELECTROPLATING	1	1	99
3574	3578	CALCULATING AND ACCOUNTING MACHINES	433	A	METAL FINISHING	1	9	0
3574	3578	CALCULATING AND ACCOUNTING MACHINES		NR	NO ELECTROPLATING	1	1	99
3576	3596	SCALES AND BALANCES, EXC. LABORATORY	433	A	METAL FINISHING	1	9	0
3576	3596	SCALES AND BALANCES, EXC. LABORATORY		NR	NO ELECTROPLATING	1	1	99
3579	3579	OFFICE MACHINES, NEC	433	A	METAL FINISHING	1	9	0
3579	3579	OFFICE MACHINES, NEC		NR	NO ELECTROPLATING	1	1	99
3581	3581	AUTOMATIC MERCHANDISING MACHINES	433	A	METAL FINISHING	1	9	0
3581	3581	AUTOMATIC MERCHANDISING MACHINES		NR	NO ELECTROPLATING	1	1	99
3582	3582	COMMERCIAL LAUNDRY EQUIPMENT	433	A	METAL FINISHING	1	9	0
3582	3582	COMMERCIAL LAUNDRY EQUIPMENT		NR	NO ELECTROPLATING	1	1	99
3585	3585	REFRIGERATION AND HEATING EQUIPMENT	433	A	METAL FINISHING	1	9	0
3585	3585	REFRIGERATION AND HEATING EQUIPMENT		NR	NO ELECTROPLATING	1	1	99
3586	3586	MEASURING AND DISPENSING PUMPS	433	A	METAL FINISHING	1	9	0
3586	3586	MEASURING AND DISPENSING PUMPS		NR	NO ELECTROPLATING	1	1	99
3589	3589	SERVICE INDUSTRY MACHINERY, NEC	433	A	METAL FINISHING	1	9	0
3589	3589	SERVICE INDUSTRY MACHINERY, NEC		NR	NO ELECTROPLATING	1	1	99
3592	3592	CARBURETORS, PISTONS, RINGS, VALVES	433	A	METAL FINISHING	1	9	0
3592	3592	CARBURETORS, PISTONS, RINGS, VALVES		NR	NO ELECTROPLATING	1	1	99
3599	3593	MACHINERY, EXCEPT ELECTRICAL, NEC	433	A	METAL FINISHING	1	9	1
3599	3593	MACHINERY, EXCEPT ELECTRICAL		NR	NO ELECTROPLATING	1	1	99
3599	3599	MACHINERY, EXCEPT ELECTRICAL		NR	NO ELECTROPLATING	1	1	99
3599	3599	MACHINERY, EXCEPT ELECTRICAL	433	A	METAL FINISHING	1	9	2
3612	3612	TRANSFORMERS	433	A	METAL FINISHING	1	9	0
3612	3612	TRANSFORMERS		NR	NO ELECTROPLATING	1	1	99
3612	3612	TRANSFORMERS		NR	DRY TRANSFORMERS	8	8	99
3613	3625	SWITCHGEAR AND SWITCHBOARD APPARATUS	433	A	METAL FINISHING	1	9	0
3613	3625	SWITCHGEAR AND SWITCHBOARD APPARATUS		NR	NO ELECTROPLATING	1	1	99
3613	3613	SWITCHGEAR AND SWITCHBOARD APPARATUS		NR	NO ELECTROPLATING	1	1	99
3613	3613	SWITCHGEAR AND SWITCHBOARD APPARATUS	433	A	METAL FINISHING	1	9	0
3621	3621	MOTORS AND GENERATORS	433	A	METAL FINISHING	1	9	0
3621	3621	MOTORS AND GENERATORS		NR	NO ELECTROPLATING	1	1	99
3622	3625	RELAYS AND INDUSTRIAL CONTROLS	433	A	METAL FINISHING	1	9	0
3622	3625	RELAYS AND INDUSTRIAL CONTROLS		NR	NO ELECTROPLATING	1	1	99
3623	3548	WELDING APPARATUS, ELECTRIC		NR	NO ELECTROPLATING	1	1	99
3623	3548	WELDING APPARATUS		NR	NO ELECTROPLATING	1	1	99
3624	3624	CARBON AND GRAPHITE PRODUCTS		NR	CARBON & GRAPHITE PRODUCTS	8	8	99
3629	3629	ELECTRICAL INDUSTRIAL APPARATUS, NEC	433	A	METAL FINISHING	1	9	0
3629	3629	ELECTRICAL INDUSTRIAL APPARATUS, NEC		NR	NO ELECTROPLATING	1	1	99
3629	3629	ELECTRICAL INDUSTRIAL APPARATUS, NEC		NR	FUEL CELLS	8	8	99
3631	3631	HOUSEHOLD COOKING EQUIPMENT	433	A	METAL FINISHING	1	9	1
3631	3631	HOUSEHOLD COOKING EQUIPMENT		NR	NO ELECTROPLATING/PORCELAIN	1	1	99
3631	3631	HOUSEHOLD COOKING EQUIPMENT	466	A	STEEL BASIS MATERIAL (PORCELAIN)	10	10	3
3631	3631	HOUSEHOLD COOKING EQUIPMENT	466	C	ALUMINUM BASIS MATERIAL (PORCELAIN)	10	10	2
3632	3632	HOUSEHOLD REFRIGERATORS AND FREEZERS	433	A	METAL FINISHING	1	9	1
3632	3632	HOUSEHOLD REFRIGERATORS AND FREEZERS		NR	NO ELECTROPLATING (PORCELAIN)	1	1	99
3632	3632	HOUSEHOLD REFRIGERATORS AND FREEZERS	466	A	STEEL BASIS MATERIAL (PORCELAIN)	10	10	2

APPENDIX A
SIC Code Cross Reference
and Total and Human Health Toxicity Number

1972/ 1977	1987	1987	CFR	CFR	Sub-part title	Human Health Toxicity Number	Total Toxicity Number	Industry Subcat Number
SIC Code	SIC Code	Title	Part	Sub- Part				
3633	3633	HOUSEHOLD LAUNDRY EQUIPMENT	433	A	METAL FINISHING	1	9	1
3633	3633	HOUSEHOLD LAUNDRY EQUIPMENT		NR	NO ELECTROPLATING/PORCELAIN	1	1	99
3633	3633	HOUSEHOLD LAUNDRY EQUIPMENT	466	A	STEEL BASIS MATERIAL (PORCELAIN)	10	10	2
3634	3634	ELECTRIC HOUSEWARES AND FANS	433	A	METAL FINISHING	1	9	0
3634	3634	ELECTRIC HOUSEWARES AND FANS		NR	NO ELECTROPLATING	1	1	99
3635	3635	HOUSEHOLD VACUUM CLEANERS	433	A	METAL FINISHING	1	9	0
3635	3635	HOUSEHOLD VACUUM CLEANERS		NR	NO ELECTROPLATING	1	1	99
3636	3639	SEWING MACHINES	433	A	METAL FINISHING	1	9	0
3636	3639	SEWING MACHINES		NR	NO ELECTROPLATING	1	1	99
3636	3559	SEWING MACHINES	433	A	METAL FINISHING	1	9	0
3636	3559	SEWING MACHINES		NR	NO ELECTROPLATING	1	1	99
3639	3639	HOUSEHOLD APPLIANCES, NEC	433	A	METAL FINISHING	1	9	3
3639	3639	HOUSEHOLD APPLIANCES, NEC	466	A	STEEL BASIS MATERIAL (PORCELAIN)	10	10	1
3641	3641	ELECTRIC LAMPS	433	A	METAL FINISHING	1	9	2
3641	3641	ELECTRIC LAMPS	469	D	LUMINESCENT MATERIALS	1	1	1
3643	3643	CURRENT-CARRYING WIRING DEVICES	433	A	METAL FINISHING	1	9	0
3643	3643	CURRENT-CARRYING WIRING DEVICES		NR	NO ELECTROPLATING	1	1	99
3643	3643	CURRENT-CARRYING WIRING DEVICES		NR		1	1	99
3644	3644	NONCURRENT-CARRYING WIRING DEVICES	433	A	METAL FINISHING	1	9	0
3644	3644	NONCURRENT-CARRYING WIRING DEVICES		NR	NO ELECTROPLATING	1	1	99
3645	3645	RESIDENTIAL LIGHTING FIXTURES	433	A	METAL FINISHING	1	9	0
3645	3645	RESIDENTIAL LIGHTING FIXTURES		NR	NO ELECTROPLATING	1	1	99
3646	3646	COMMERCIAL LIGHTING FIXTURES	433	A	METAL FINISHING	1	9	0
3646	3646	COMMERCIAL LIGHTING FIXTURES		NR	NO ELECTROPLATING	1	1	99
3647	3647	VEHICULAR LIGHTING EQUIPMENT	433	A	METAL FINISHING	1	9	0
3647	3647	VEHICULAR LIGHTING EQUIPMENT		NR	NO ELECTROPLATING	1	1	99
3648	3648	LIGHTING EQUIPMENT, NEC	433	A	METAL FINISHING	1	9	0
3648	3648	LIGHTING EQUIPMENT, NEC		NR	NO ELECTROPLATING	1	1	99
3651	3651	RADIO AND TV RECEIVING SETS	433	A	METAL FINISHING	1	9	0
3651	3651	RADIO AND TV RECEIVING SETS		NR	NO ELECTROPLATING	1	1	99
3652	3652	PHONOGRAPH RECORDS		NR		1	1	99
3661	3575	TELEPHONE AND TELEGRAPH APPARATUS		NR		1	1	99
3661	3661	TELEPHONE AND TELEGRAPH APPARATUS		NR		1	1	99
3662	3663	RADIO AND TV COMMUNICATION EQUIPMENT		NR		1	1	99
3662	3812	RADIO AND TV COMMUNICATION EQUIPMENT		NR		1	1	99
3662	3669	RADIO AND TV COMMUNICATION EQUIPMENT		NR		1	1	99
3662	3829	RADIO AND TV COMMUNICATION EQUIPMENT		NR		1	1	99
3662	3699	RADIO AND TV COMMUNICATION EQUIPMENT		NR		1	1	99
3672	3671	ELECTRON TUBES	469	C	CATHODE RAY TUBE	8	8	0
3674	3674	SEMICONDUCTORS AND RELATED DEVICES	469	A	SEMI-CONDUCTORS	9	10	0
3675	3675	ELECTRONIC CAPACITORS	433	A	METAL FINISHING	1	9	0
3676	3676	RESISTORS FOR ELECTRONIC APPLICATIONS	433	A	METAL FINISHING	1	9	0
3676	3676	RESISTORS FOR ELECTRONIC APPLICATIONS		NR	NO ELECTROPLATING	1	1	99
3677	3677	ELECTRONIC COILS, TRANSFORMERS & OTHER I	433	A	METAL FINISHING	1	9	0
3677	3677	ELECTRONIC COILS, TRANSFORMERS & OTHER I		NR	DRY TRANSFORMERS	8	8	99
3678	3678	CONNECTORS FOR ELECTRONIC APPLICATIONS	433	A	METAL FINISHING	1	9	0
3678	3678	CONNECTORS FOR ELECTRONIC APPLICATIONS		NR	NO ELECTROPLATING	1	1	99
3679	3672	ELECTRONIC COMPONENTS, NEC	413	H	PRINTED CIRCUIT BOARDS	1	9	1
3679	3264	ELECTRONIC COMPONENTS, NEC		NR		1	1	99
3679	3679	ELECTRONIC COMPONENTS, NEC	469	B	ELECTRONIC CRYSTALS	1	5	2
3679	3671	ELECTRONIC COMPONENTS, NEC		NR		1	1	99
3679	3695	ELECTRONIC COMPONENTS, NEC		NR		1	1	99
3679	3679	ELECTRONIC COMPONENTS, NEC		NR		1	1	99
3679	3625	ELECTRONIC COMPONENTS, NEC		NR		1	1	99

APPENDIX A
SIC Code Cross Reference
and Total and Human Health Toxicity Number

1972/ 1977	1987		CFR		Human			
SIC	SIC	1987	CFR	Sub-	Sub-part title	Health	Total	Industry
Code	Code	Title	Part	Part		Toxicity	Toxicity	Subcat
						Number	Number	Number
3691	3691	STORAGE BATTERIES	461	A	CADMIUM BATTERIES	5	10	14
3691	3691	STORAGE BATTERIES	461	B	CALCIUM BATTERIES	5	5	1
3691	3691	STORAGE BATTERIES	461	C	LEAD BATTERIES	2	9	5
3691	3691	STORAGE BATTERIES	461	D	LECLANCHE BATTERIES	5	5	17
3691	3691	STORAGE BATTERIES	461	E	LITHIUM BATTERIES	5	5	7
3691	3691	STORAGE BATTERIES	461	O	MERCURY (WESTON) CELLS	5	5	11
3691	3691	STORAGE BATTERIES	461	G	ZINC BATTERIES	10	10	4
3691	3691	STORAGE BATTERIES	461	O	MERCURY (RUBEN) BATTERIES	5	5	10
3691	3691	STORAGE BATTERIES	461	O	LEAD ACID RESERVE BATTERIES	5	5	6
3691	3691	STORAGE BATTERIES	461	F	MAGNESIUM BATTERIES	5	5	9
3692	3692	PRIMARY BATTERIES, DRY & WET	461	A	CADMIUM BATTERIES	5	10	14
3692	3692	PRIMARY BATTERIES, DRY & WET	461	B	CALCIUM BATTERIES	5	5	1
3692	3692	PRIMARY BATTERIES, DRY & WET	461	C	LEAD BATTERIES	2	9	5
3692	3692	PRIMARY BATTERIES, DRY & WET	461	E	LITHIUM BATTERIES	5	5	7
3692	3692	PRIMARY BATTERIES, DRY & WET	461	F	MAGNESIUM BATTERIES	5	5	9
3692	3692	PRIMARY BATTERIES, DRY & WET	461	O	MERCURY (RUBEN) BATTERIES	5	5	10
3692	3692	PRIMARY BATTERIES, DRY & WET	461	O	MERCURY (WESTON) CELLS	5	5	11
3692	3692	PRIMARY BATTERIES, DRY & WET	461	O	LEAD ACID RESERVE BATTERIES	3	3	6
3692	3692	PRIMARY BATTERIES, DRY & WET	461	G	ZINC BATTERIES	10	10	4
3693	3845	ELECTROMEDICAL EQUIPMENT	469	C	ELECTRON TUBES	8	8	1
3693	3844	X-RAY APPARATUS AND TUBES	469	C	ELECTRON TUBES	8	8	2
3694	3694	ELECTRICAL EQUIP FOR INTERNAL COMBUSTION	433	A	METAL FINISHING	1	9	0
3694	3694	ELECTRICAL EQUIP FOR INTERNAL COMBUSTION		NR	NO ELECTROPLATING	1	1	99
3699	3641	ELECTRICAL MACHINERY, EQUIPMENT & SUPPLI	433	A	METAL FINISHING	1	9	1
3699	3585	ELECTRICAL MACHINERY, EQUIPMENT & SUPPLI	433	A	METAL FINISHING	1	9	2
3699	3699	ELECTRICAL MACHINERY, EQUIPMENT & SUPPLI	433	A	METAL FINISHING	1	9	3
3711	3711	MOTOR VEHICLES & PASSENGER CAR BODIES	433	A	METAL FINISHING	1	9	0
3711	3711	MOTOR VEHICLES & PASSENGER CAR BODIES		NR	NO ELECTROPLATING	1	1	99
3713	3713	TRUCK & BUS BODIES	433	A	METAL FINISHING	1	9	0
3713	3713	TRUCK & BUS BODIES		NR	NO ELECTROPLATING	1	1	99
3714	3714	MOTOR VEHICLE PARTS & ACCESSORIES		NR	NO ELECTROPLATING	1	1	99
3714	3714	MOTOR VEHICLE PARTS & ACCESSORIES	433	A	METAL FINISHING	1	9	0
3715	3715	TRUCK TRAILERS	433	A	METAL FINISHING	1	9	0
3715	3715	TRUCK TRAILERS		NR	NO ELECTROPLATING	1	1	99
3721	3721	AIRCRAFT	433	A	METAL FINISHING	1	9	0
3721	3721	AIRCRAFT		NR	NO ELECTROPLATING	1	1	99
3724	3724	AIRCRAFT ENGINES & ENGINE PARTS	433	A	METAL FINISHING	1	9	0
3724	3724	AIRCRAFT ENGINES & ENGINE PARTS		NR	NO ELECTROPLATING	1	1	99
3728	3492	AIRCRAFT EQUIPMENT, NEC	433	A	METAL FINISHING	1	9	0
3728	3593	AIRCRAFT EQUIPMENT, NEC		NR	NO ELECTROPLATING	1	1	99
3728	3594	AIRCRAFT EQUIPMENT, NEC		NR	NO ELECTROPLATING	1	1	99
3728	3594	AIRCRAFT EQUIPMENT, NEC	433	A	METAL FINISHING	1	9	1
3728	3593	AIRCRAFT EQUIPMENT, NEC	433	A	METAL FINISHING	1	9	2
3728	3492	AIRCRAFT EQUIPMENT, NEC		NR	NO ELECTROPLATING	1	1	99
3728	3728	AIRCRAFT EQUIPMENT, NEC		NR	NO ELECTROPLATING	1	1	99
3728	3728	AIRCRAFT EQUIPMENT, NEC	433	A	METAL FINISHING	1	9	3
3731	3731	SHIP BUILDING AND REPAIRING	470	1	SHIP BUILDING & REPAIRING	6	6	0
3732	3732	BOAT BUILDING AND REPAIRING		NR	NO ELECTROPLATING	1	1	99
3732	3732	BOAT BUILDING AND REPAIRING	433	A	METAL FINISHING	1	9	0
3743	3743	RAILROAD EQUIPMENT	433	A	METAL FINISHING	1	9	0
3743	3743	RAILROAD EQUIPMENT		NR	NO ELECTROPLATING	1	1	99
3751	3751	MOTORCYCLES, BICYCLES AND PARTS	433	A	METAL FINISHING	1	9	0
3751	3751	MOTORCYCLES, BICYCLES AND PARTS		NR	NO ELECTROPLATING	1	1	99
3761	3761	GUIDED MISSILES AND SPACE VEHICLES	433	A	METAL FINISHING	1	9	0

APPENDIX A
SIC Code Cross Reference
and Total and Human Health Toxicity Number

1972/ 1977	1987		CFR		Human Health Toxicity Number	Total Toxicity Number	Industr Subcat Number
SIC Code	SIC Code	1987 Title	CFR Part	Sub- Part			
3761	3761	GUIDED MISSILES AND SPACE VEHICLES		NR	1	1	99
3764	3764	SPACE PROPULSION UNITS AND PARTS	433	A	1	9	0
3764	3764	SPACE PROPULSION UNITS AND PARTS		NR	1	1	99
3769	3769	SPACE VEHICLE EQUIPMENT, NEC	433	A	1	9	0
3769	3769	SPACE VEHICLE EQUIPMENT, NEC		NR	1	1	99
3792	3792	TRAVEL TRAILERS AND CAMPERS	433	A	1	9	0
3792	3792	TRAVEL TRAILERS AND CAMPERS		NR	1	1	99
3795	3795	TANKS AND TANK COMPONENTS	433	A	1	9	0
3795	3795	TANKS AND TANK COMPONENTS		NR	1	1	99
3799	3799	TRANSPORTATION EQUIPMENT, NEC	433	A	1	9	0
3799	3799	TRANSPORTATION EQUIPMENT, NEC		NR	1	1	99
3811	3812	ENGINEERING AND SCIENTIFIC INSTRUMENTS	433	A	1	9	1
3811	3812	ENGINEERING AND SCIENTIFIC INSTRUMENTS		NR	1	1	99
3811	3821	ENGINEERING AND SCIENTIFIC INSTRUMENTS		NR	1	1	99
3811	3821	ENGINEERING AND SCIENTIFIC INSTRUMENTS	433	A	1	9	2
3811	3826	ENGINEERING AND SCIENTIFIC INSTRUMENTS	433	A	1	9	3
3811	3826	ENGINEERING AND SCIENTIFIC INSTRUMENTS		NR	1	1	99
3811	3829	ENGINEERING AND SCIENTIFIC INSTRUMENTS	433	A	1	9	4
3811	3829	ENGINEERING AND SCIENTIFIC INSTRUMENTS		NR	1	1	99
3811	3826	ENGINEERING AND SCIENTIFIC INSTRUMENTS	433	A	1	9	5
3811	3827	ENGINEERING AND SCIENTIFIC INSTRUMENTS		NR	1	1	99
3811	3827	ENGINEERING AND SCIENTIFIC INSTRUMENTS	433	A	1	9	6
3822	3822	ENVIRONMENTAL CONTROLS	433	A	1	9	0
3822	3822	ENVIRONMENTAL CONTROLS		NR	1	1	99
3823	3823	PROCESS CONTROL INSTRUMENTS	433	A	1	9	0
3823	3823	PROCESS CONTROL INSTRUMENTS		NR	1	1	99
3824	3824	FLUID METERS AND COUNTING DEVICES	433	A	1	9	0
3824	3824	FLUID METERS AND COUNTING DEVICES		NR	1	1	99
3825	3825	INSTRUMENTS TO MEASURE ELECTRICITY	433	A	1	9	0
3825	3825	INSTRUMENTS TO MEASURE ELECTRICITY		NR	1	1	99
3829	3829	MEASURING & CONTROLLING DEVICES, NEC	433	A	1	9	0
3829	3829	MEASURING & CONTROLLING DEVICES, NEC		NR	1	1	99
3832	3826	OPTICAL INSTRUMENTS AND LENSES	433	A	1	9	1
3832	3826	OPTICAL INSTRUMENTS AND LENSES		NR	1	1	99
3832	3829	OPTICAL INSTRUMENTS AND LENSES	433	A	1	9	2
3832	3829	OPTICAL INSTRUMENTS AND LENSES		NR	1	1	99
3832	3827	OPTICAL INSTRUMENTS AND LENSES	433	A	1	9	3
3832	3827	OPTICAL INSTRUMENTS AND LENSES		NR	1	1	99
3841	3841	SURGICAL AND MEDICAL INSTRUMENTS		NR	1	1	99
3841	3841	SURGICAL AND MEDICAL INSTRUMENTS	433	A	1	9	0
3842	3842	SURGICAL APPLIANCES AND SUPPLIES		NR	1	1	99
3842	3842	SURGICAL APPLIANCES AND SUPPLIES	433	A	1	9	0
3843	3843	DENTAL EQUIPMENT AND SUPPLIES		NR	1	1	99
3843	3843	DENTAL EQUIPMENT AND SUPPLIES	433	A	1	9	0
3851	3851	OPHTHALMIC GOODS		NR	1	1	99
3851	3851	OPHTHALMIC GOODS	433	A	1	9	0
3861	3861	PHOTOGRAPHIC EQUIPMENT AND SUPPLIES	459	3	8	8	1
3861	3861	PHOTOGRAPHIC EQUIPMENT AND SUPPLIES	459	4	8	8	2
3861	3861	PHOTOGRAPHIC EQUIPMENT AND SUPPLIES	459	5	8	8	3
3873	3873	WATCHES, CLOCKS AND WATCHCASES	433	A	1	9	0
3873	3873	WATCHES, CLOCKS AND WATCHCASES		NR	1	1	99
3911	3911	JEWELRY, PRECIOUS METAL	433	A	1	9	2
3911	3911	JEWELRY, PRECIOUS METAL	471	D	1	10	1
3914	3914	SILVERWARE AND PLATED WARE	433	A	1	9	0

APPENDIX A
SIC Code Cross Reference
and Total and Human Health Toxicity Number

1972/ 1977	1987		CFR	CFR		Human	Total	Industr
SIC	SIC	1987	CFR	Sub-	Sub-part title	Health	Toxicity	Subcat
Code	Code	Title	Part	Part		Number	Number	Number
3914	3914	SILVERWARE AND PLATED WARE		NR	NO ELECTROPLATING	1	1	99
3915	3915	JEWELERS' MATERIALS & LAPIDARY WORK	433	A	METAL FINISHING	1	9	0
3915	3915	JEWELERS' MATERIALS & LAPIDARY WORK		NR	NO ELECTROPLATING	1	1	99
3931	3931	MUSICAL INSTRUMENTS		NR	NO ELECTROPLATING	1	1	99
3931	3931	MUSICAL INSTRUMENTS	433	A	METAL FINISHING	1	9	0
3942	3942	DOLLS		NR		1	1	99
3944	3944	GAMES, TOYS AND CHILDREN'S VEHICLES	433	A	METAL FINISHING	1	9	0
3944	3944	GAMES, TOYS AND CHILDREN'S VEHICLES		NR	NO ELECTROPLATING	1	1	99
3949	3949	SPORTING AND ATHLETIC GOODS, NEC	433	A	METAL FINISHING	1	9	1
3949	3949	SPORTING AND ATHLETIC GOODS, NEC		NR	NO ELECTROPLATING	1	1	99
3949	3949	SPORTING AND ATHLETIC GOODS, NEC	433	A	METAL FINISHING	1	1	2
3951	3951	PENS AND MECHANICAL PENCILS		NR	NO ELECTROPLATING	1	1	99
3951	3951	PENS AND MECHANICAL PENCILS	433	A	METAL FINISHING	1	9	0
3952	3952	LEAD PENCILS AND ART GOODS		NR		1	1	99
3953	3953	MARKING DEVICES		NR		1	1	99
3955	3955	CARBON PAPER AND INKED RIBBONS		NR		1	1	99
3961	3961	COSTUME JEWELRY		NR	NO ELECTROPLATING	1	1	99
3961	3961	COSTUME JEWELRY	433	A	METAL FINISHING	1	9	0
3962	3999	ARTIFICIAL FLOWERS		NR		1	1	99
3964	3965	NEEDLES, PINS AND FASTENERS	433	A	METAL FINISHING	1	9	0
3964	3965	NEEDLES, PINS AND FASTENERS		NR	NO ELECTROPLATING	1	1	99
3991	3991	BROOMS AND BRUSHES	433	A	METAL FINISHING	1	9	0
3991	3991	BROOMS AND BRUSHES		NR	NO ELECTROPLATING	1	1	99
3993	3993	SIGNS AND ADVERTISING DISPLAYS	433	A	METAL FINISHING	1	9	0
3993	3993	SIGNS AND ADVERTISING DISPLAYS		NR		1	1	99
3993	3993	SIGNS AND ADVERTISING DISPLAYS		NR	NO ELECTROPLATING	1	1	99
3995	3995	BURIAL CASKETS		NR	NO ELECTROPLATING	1	1	99
3995	3995	BURIAL CASKETS	433	A	METAL FINISHING	1	9	0
3996	3996	HARD SURFACE FLOOR COVERINGS		NR		1	1	99
3996	3996	HARD SURFACE FLOOR COVERINGS	443	D	LINOLEUM & PRINTED ASPHALT FELT	1	1	0
3999	3999	MANUFACTURING INDUSTRIES, NEC	433	A	METAL FINISHING	1	9	0
3999	3999	MANUFACTURING INDUSTRIES, NEC		NR		1	1	99
4172	4173	BUS TERMINAL AND SERVICE FACILITIES		NR		1	1	99
4226	4226	SPECIAL WAREHOUSING & STORAGE, NEC		NR		1	1	99
4231	4231	TRUCKING TERMINAL FACILITIES				5	5	0
4469	4493	WATER TRANSPORTATION SERVICES, NEC				5	5	1
4469	4959	WATER TRANSPORTATION SERVICES, NEC				5	5	2
4469	4499	WATER TRANSPORTATION SERVICES, NEC				5	5	3
4612	4612	CRUDE PETROLEUM PIPELINES		NR		8	8	0
4911	4911	ELECTRICAL SERVICES	423	A	HYDRO ELECTRIC PWR GEN.(W/ SAN. WST.)	6	6	1
4911	4911	ELECTRICAL SERVICES	423	A	STEAM ELECTRIC POWER GENERATING	6	6	2
4931	4931	ELECTRIC AND OTHER SERVICES COMBINED	423	A	HYDRO ELECTRIC PWR. GEN. (W/ SAN. WST.)	6	6	1
4931	4931	ELECTRIC AND OTHER SERVICES COMBINED	423	A	STEAM ELECTRIC POWER GENERATING	6	6	2
4941	4941	WATER SUPPLY				7	7	0
4952	4952	SEWERAGE SYSTEMS				1	1	0
4953	4953	REFUSE SYSTEMS			SOLID WASTE FACILITIES	7	7	1
4953	4953	REFUSE SYSTEMS			HAZARDOUS WASTE TREATMENT FACILITIES	10	10	2
4959	4959	SANITARY SERVICES, NEC				1	1	0
4961	4961	STEAM SUPPLY				1	1	0
5052	5052	COAL & OTHER MINERALS & ORES				8	8	0
5093	5093	SCRAP & WASTE MATERIALS				10	10	0
5143	5143	DAIRY PRODUCTS	405	A	RECEIVING STATIONS	1	1	0
5161	5169	CHEMICALS AND ALLIED PRODUCTS				10	10	0
5171	5171	PETROLEUM BULK STATIONS & TERMINALS				8	8	0

APPENDIX A
SIC Code Cross Reference
and Total and Human Health Toxicity Number

1972/ 1977	1987		CFR			Human	Total	Industry
SIC	SIC	1987	CFR	Sub-	Sub-part title	Health	Toxicity	Subcat
Code	Code	Title	Part	Part		Number	Number	Number
5191	5191	FARM SUPPLIES				6	6	0
5423	5421	MEAT AND FISH (SEAFOOD) MARKETS	432	E	SMALL PROCESSOR	1	1	1
5423	5421	MEAT AND FISH (SEAFOOD) MARKETS	432	F	MEAT CUTTER	1	1	2
5423	5421	MEAT AND FISH (SEAFOOD) MARKETS	432	G	SAUSAGE AND LUNCHEON MEATS PROCESSOR	1	1	3
5423	5421	MEAT AND FISH (SEAFOOD) MARKETS		NR	OTHER MARKETS WITHOUT PROCESSING	1	1	99
7211	7211	POWER LAUNDRIES, FAMILY AND COMMERCIAL	444	3	POWER LAUNDRIES	3	3	0
7213	7213	LINEN SUPPLY	444	9	LINEN SUPPLY	6	6	0
7214	7219	DIAPER SERVICE	444	5	DIAPER SERVICE	3	3	0
7215	7215	COIN-OPERATED LAUNDRIES & DRY CLEANING	444	1	COIN-OPERATED LAUNDRIES	3	3	0
7216	7216	DRY CLEANING PLANTS, EXCEPT RUG CLEANING	444	2	DRY CLEANING PLANTS	3	3	0
7217	7217	CARPET & UPHOLSTERY CLEANING	444	4	CARPET & UPHOLSTERY CLEANING	3	3	0
7218	7218	INDUSTRIAL LAUNDERERS	444	8	INDUSTRIAL LAUNDRY	6	6	0
7219	7219	LAUNDRY, GARMENT SERVICES, NEC	444	6	LAUNDRY, GARMENT SERVICES NEC	1	1	0
7342	7342	DISINFECTING & EXTERMINATING SERV.				10	10	0
7391	8731	RESEARCH & DEVELOPMENT LABORATORIES		NR		1	1	99
7395	7384	PHOTOFINISHING LABORATORIES	459	A	PHOTOGRAPHIC PROCESSING	1	1	0
7397	8734	COMMERCIAL TESTING LABORATORIES				1	1	0
7542	7542	CAR WASHES	444	7	CAR WASH	3	3	0
7699	7699	REPAIR SHOPS, NEC	433	A	METAL FINISHING	1	9	0
7699	7699	REPAIR SHOPS, NEC		NR	NO ELECTROPLATING	1	1	99
7819	7819	SERV. ALLIED TO MOTION PICTURE PROD.	459	A	PHOTOGRAPHIC PROCESSING	1	1	0
8062	8062	GEN. MEDICAL/SURGICAL HOSPITALS				10	10	0
8069	8069	SPECIALTY HOSPITALS				10	10	0
8071	8071	MEDICAL LABORATORIES				10	10	0
8922	8733	NONCOMMERCIAL RESEARCH ORGANIZATIONS				7	7	0

APPENDIX B

ESTUARIES ENROLLED IN THE NATIONAL ESTUARY PROTECTION PROGRAM

	<u>ESTUARY</u>	<u>STATE</u>
1.	San Francisco Bay/Delta	California
2.	Santa Monica Bay	California
3.	Albemarle	North Carolina
4.	Pamlico	North Carolina
5.	Puget Sound	Washington
6.	Buzzards Bay	Massachusetts
7.	Narragansett Bay	Rhode Island
8.	Long Island Sound	Connecticut and New York
9.	New York/New Jersey Harbor	New Jersey and New York
10.	Delaware Bay	Pennsylvania, New Jersey, and Delaware
11.	Delaware Inland Bays	Delaware
12.	Sarasota Bay	Florida
13.	Galveston Bay	Texas
14.	CASCO	Maine
15.	Massachusetts Bays	Massachusetts
16.	Indian River Lagoon	Florida
17.	Tampa Bay	Florida
18.	Barataria-Terrebonne Estuarine Complex	Louisiana

APPENDIX C
GREAT LAKES AREAS OF CONCERN

Lake Basin	Jurisdiction	Cause of Problem	
		Conventional Pollutants	Heavy Metals/ Toxic Organics
<u>Lake Superior</u>			
St. Louis River	Minnesota	X	X
Torch Lake	Michigan	X	X
Deer Lake-Carp Creek-Carp River	Michigan		X
<u>Lake Michigan</u>			
Manistique	Michigan		X
Menominee River	Michigan/Wisconsin		X
Fox River/Southern Green Bay	Wisconsin	X	X
Sheboygan	Wisconsin		X
Milwaukee Estuary	Wisconsin	X	X
Waukegan Harbor	Illinois		X
Grand Calumet River/ Indiana Harbor Canal	Indiana	X	X
Kalamazoo Lake	Michigan		X
Muskegon Lake	Michigan		X
White Lake	Michigan		X
<u>Lake Huron</u>			
Saginaw River/ Saginaw Bay	Michigan		X
<u>Lake Erie</u>			
Clinton River	Michigan	X	X
Rouge River	Michigan	X	X
Raisin River	Ohio	X	X
Maumee River	Ohio	X	X
Black River	Ohio	X	X
Cuyahoga River	Ohio	X	X
Ashtabula River	Ohio	X	X
<u>Lake Ontario</u>			
Buffalo River	New York	X	X
Eighteen Mile Creek	New York	X	X
Rochester Embayment	New York	X	X
Oswego River	New York	X	X
<u>Connecting Channels</u>			
St. Marys River	Michigan	X	X
St. Clair River	Michigan	X	X
Detroit River	Michigan	X	X
Niagra River	New York	X	X
St. Lawrence River	New York	X	X

APPENDIX D

Coal Facility Discretionary Major Weighting Factor Guideline

Tonnage:	4 Points	$\geq 1,500,000$ t/y coal mined or processed
	2 Points	$\geq 500,000$ t/y and $< 1,500,000$ t/y coal mined or processed
	0 Points	$< 500,000$ t/y coal mined or processed
Coal Origin:	5 Points	Acidic seam
	0 Points	Non-acidic seam
Discharge Rate (Average):	5 Points	$\leq 1,500$ GPM (2.2 MGD)
	3 Points	$< 1,500$ GPM and ≥ 500 GPM
	1 Point	< 500 GPM
Receiving Stream:	5 Points	Trout (coldwater fishery) stream
	3 Points	Other high quality stream
	0 Points	Other streams
Discretion:	0-10 Points	Sensitive watersheds, public w.s. intakes, public comment, past chronic violator, potential environmental damage

The above rating guide can be used to prioritize coal facilities for designation as discretionary majors. A rating of 15 points would appear to be a reasonable starting point for consideration as a discretionary major.