



# Chuukese

Honolulu Elections Division

## Chuukese Language Kit



# **Chepenin Masowan**

## Table of Contents

### **Porausen Utut**

Voter Information Brochure

### **2024 Porousen Chon Utut**

2024 Election Voter Information

### **Toropwen Amasou Registerun Chon Utut (Emwenin Pekin Chiaku)**

Voter Registration Application Form (Translation Guide)

### **Toropwen Amasou Chon rese nomw non Hawaii (Emwenin Pekin Chiaku)**

Hawaii Absentee Application Form (Translation Guide)

### **Toropwen utut non founon aramas (Emwenin Pekin Chiaku)**

Application for In-Person Ballot (Translation Guide)

### **Nenien Angangen Aninin Chon Utut FAQ**

Voter Service Center FAQ

### **Emwenin Utut (Emwenin Pekin Chiaku)**

Voting Instructions (Translation Guide)

### **Ballot Seni Facsimile (Atetenin Porousen kapasen Ballot seni 2024 me chiaku)**

Facsimile Ballot (Glossary of 2024 Ballot terms and translation)

### **#10 Envelope**

#10 Envelope

# Emwenin Om Kopwe Amasow Ren Utuut

Me wonline ren [www.olvr.hawaii.gov](http://www.olvr.hawaii.gov)

## Non mail ika pusin chutiw:

Elections Division  
Office of the City Clerk  
530 S. King St, Room 100  
Honolulu, HI 96813

## Angei ika kapini noum aplikason ren:

[www.honoluluelections.us](http://www.honoluluelections.us)

## Ika pusin chuto me angei noum kapi seni ekkei neni:

- Ekkewe nenien mwich non sopw
- Ekkewe Posto me Merika
- Ofesin-an naisenin sa won taraku
- Ekkoch ofes-an muun non ewe State an Hawaii
- Nenien puk (ika public libraries)
- State an Hawaii puken takises
- Ewe Tettenin ika taropwen-an Ekkewe Nampan  
Fon me Hawaii

---

**Nupwen ka wes ne register  
ren om kopwe utuut, ekkewe  
taropwen repwe tiin ngonuk  
non mail. Ese wor ekkewe  
ekkoch Nenien Utuut aramas  
repwe pusin chuto non!**

---



## Poraus ngeni kem:

(808) 768-3800  
[www.honoluluelections.us](http://www.honoluluelections.us)  
City & County of Honolulu  
Office of the City Clerk, Elections Division  
530 S King St, 100  
Honolulu, HI 96813

**Fiti ach kewe peich non kampuiter pwe kopwe  
sinei sopusopun poraus mi auchea!**



Twitter  
[@HNLelections](https://twitter.com/HNLelections)



**Sopw me County non Honolulu  
Ofesin ewe Meinapen Sopw  
Kinikinin Utuut**

# PORAUSEN UTUUT

# Io Ra Tongeni Amasow Ren Ar Repwe Utuut

- **Ekkewe iir U.S. citizen**

Ekkewe rese mwo U.S. citizens, pachanong ekkewe U.S. Nationals, rese tongeni utuut.

- **Ekkewe ra tori 16 ier iir**

(nge ekkewe ra tori 18 ier iir ra tongeni utuut)

- **Ekkewe ika chon nonom non ewe State an Hawaii**

Ika chon nonom non Hawaii a wewe ngeni ekkewe ra wesewesen nonom non Hawaii fan pwingun anuk, esapw chok ekkewe ra kukunou ika fisit me ikei.

**Nupwen ka wes ne register ren om kopwe utuut, ekkewe taropwen repwe tiin ngonuk non mail. Ese wor ekkewe ekkoch Nenien Utuut aramas repwe pusin chuto non!**

Ren om kopwe cheki om tufich ikatongeni utuut , no ngeni [www.oivr.hawaii.gov](http://www.oivr.hawaii.gov) ren noum naman Naisenin Uhteng me Hawaii/Hawaii State ID, ika kori ach ei ofes.

**Utuut Seni Pwan Ew Neni**

Ika pwe ka sai fetan nge ka need repwe send noum na ballot ngeni pwan ew address, ina kopwe amasoua ewe taropwe mi par a iteni aplikason Ren Om Kopwe Utuut Seni Pwan Ew Neni.

**Omuchunon raanin amasow ren utuut**

Meinis ekkewe aplikason repwe tiin ika tonong ren ewe Ofesin Clerk esap mang seni ewe Inmik raan me mwene ewe raanin primary, cheneral, ika pwan aruwowan utuut

**Katanon Om amasow ren Utuut**

Ren sopuson aninis, no ngeni ach iwe website ika kori ach ewe ofes.

# Emwenin Om Kopwe Utuut

Annean fichi ekkewe emwenin fori om na taropwen utuut me enfelop

Kopwe tumunufichi om kopwe sainei noum na envelope! Ika kose sainei om na ballot epwe efisata pwe om taropwen utuut ESE TONGENI PACHANONG.

Monota ngeni om kopwe sendini om na taropwen utuut. Ika noumw taropwen utuut epwe tonong **murin 7:00 PM** won ewe Raanin Utuut epwe efisata pwe om taropwen utuut ESAPW tongeni pachanong. Ika ka siwini ewe pwinin maram won om taropwen utuut epwe efisata pwe om na ballot ESAPW tongeni pachanong.

**Sendini ika atoura om taropwen utuut:**

- Non ew nenien atouranong
  - Non ew Nenien Utuut
  - Non mail – Ese pwan need stamp!
- Pi kopwe mutir sendini om na ballot non mail (USPS) pwe esapw toriir murin ewe Raanin Utuut.
- Ren porausen ekkewe Nenien Utuut (Voter Service Center) ika taropwen utuut nenien atouranongme inet fansoun ekkewe neni epwe suuk, tota won ach iwe website ika kori ach ewe ofes.

**Siwini noumw taropwen utuut**

Tota won ach iwe website ika kori ach ewe ofes ika ka need aninis.

# Nenien Utuut

- Mecheresin utuut
- Aninis ren utuut
- Amasow me utuut murin ewe omwuchunon raanin
- Angei om siwini taropwen utuut

Mi suuk non 10 raan me mwene ew me ew Raanin Utuut

Sarinfaan - Ammwon, Kunok 8:00 AM - 4:30 PM  
Raanin Utuut, Kunok 7:00 AM - 7:00 PM

**Honolulu Hale**

530 S King St.  
Honolulu, HI 96813

**Kapolei Hale**

1000 Uluohia St.  
Kapolei, HI 96707





## Porousen Chon Utut seni ewe City me Couty of Honolulu

### Ewin Utut

Amon, Akos 10, 2024

### Unusen Utut

Oru, Nofamper 5, 2024

---

### Apachanongen Auchean Ranin

#### Saingon Rechister ren Chon Utut

Primary Election - Eunungat, Sunae 31, 2024

General Election - Sarifan, Oktoper 28, 2024

*En kopwene kan sopwesopweno ne register non ew fansoun ese nifinifin seni omw aa ewe Systemin Registerin. Chon Utut Online ika non founfoun aramas non ewe Nenien Angangen Aninisin Chon Utut.*

### Nenien Angangen Aninisin Chon Utut & Ranin

Nengeni ewe maaketiwene a kawor non nesopwonon ewe toropwe

### Nenien Isenanong & Ranin

Nengeni ewe maaketiwene a kawor non nesopwonon ewe toropwe

### Registerin Online

Ew minafon me fichin Naisinen chon uwow seni Hawaii State ika Hawaii State ID epwe kan kawor ren omw kopwe aa ewe systemin registration ren chon utut online. Aa ewe link me fan ren eom kopwe tongeni tota won ewe site ren State of Hawaii Ofesin Registerin Utut Online ren Chon Utut. Link ren Register ren Chon Utut Online. [Online Voter Registration link](#)



## 3 sokkun mi mecheres ne register!

### 1) Registerin Online

Ewe systemin State Ofesin Registerin Utut ren Chon Utut Online a kan kawor won ewe website ren Ofesin Utut. Online Voter Registration link

Ew minafon me fichin Naisinen chon uwow seni Hawaii State ika Hawaii State ID epwe kan kawor ren omw kopwe aa ewe systemin registration ren chon utut online. Meinsin registerun chon utut me tingoren utut absentee epwene kan tapwei ewe saingonon ra kan foruta.

### 2) Download echo Toropwen Amasou

Download ewe toropwen amasou, ren an epwe makenong me pwan tinato, ikei: Link ren Toropwen Amasou. Application Form Download link

Uwanong echo toropwe mi unuseno ika pwe en ka kan register pwe kopwe utut ren ewe ewin fansoun ika en ka kan siwini omw address ika siwini itom.

### 3) Ikawe en kopwe Angei echo Toropwen Amasou

Toropwen Amasou repwe kunar non ekkewe neni mi mecheres ne tori mi tapwoto:

- Meinsin Satellite City Halls (Satellite City Halls link)
- United States Post Offices
- Ofesin laisenin Chon Drive (registerun chon utut chok)
- Chomong ofesin muun State of Hawaii kena (registerun chon utut chok)
- Public Libraries
- State of Hawaii Buuken Takisis
- Hawaiian Telcom Yellow Pages (registerun chon utut chok, murin ewe Ekeitin Amonetan Katano)

Chienon chok ekkewe ofesin Naisinen chon uwou (ena achufengenin echo taropwen registerun chon utut pwe epwe ew pekin ewe toropwen amasou ren laisenin drive), neni kewe ra maaketiw me asan resapw ioni awasinon toropwen amasou.

Kose mochen kopwe tinanong ekkena awasinon toropwe wenechar ngeni ewe Ofesin an ewe City Clerk we Kinikinin Utut:

Kinikinin Utut  
Ofesin ewe City Clerk  
530 S. King St, 100  
Honolulu, Hawaii 96813



## Emwenin Utut & Finin

Meinisin chon utut, ra kan eochuno ne register me mwan ewe saingon ren registerun chon utut, repwe kan angei seni posto ew ballot.

### Utut seni Posto

Chon Utut epwene kan titingenir seni posto ew pakech mi masow ren ekkei mettoch mi tapwoto:

- Ew ballot;
- Nenien Toropwen Utut ika envelop (aram);
- Envelopen Aniwinaton Ballot; me
- Sokopaten emwenin utut

### Foforun Maaken ew Ballot seni Posto

1. Cheki me ruwopenien ekkewe ballots me pwan meinisin mettochun emwen mi nom non. Makei finiom kewe won echo toropwe me eimuno me mwan.
2. Utut seni onw achonano ewe nenien utut orun finieomuwe awunusano fiti efoch pen mi choon ika araw inkan.
3. Isenanong ewe wututun ballot non ewe nenien toropwen utut mi aram ika envelop me pwan sealinano ewe envelop.
4. Isenanon ewe nenien toropwen utut mi on ika envelop non ewe Envelopen Aniwinaton Ballot (ponun business). Sealinano ewe envelop. Ika pwe en ka kan angei pekin emwen seni omw kopwe awora echo kapiin noum aiititum fiti omwuwe ututun ballot, iwe isenanong kapiin aititum. Sealinano ewe envelop
5. SAINEI ewe porousen apunguno won ewe Envelopen Aniwinin Ballot. Omwuwe ballot ESAP anea ika pwe ewe porousen apunguno ese kan sainei.

6. Tinanong ewe envelop non posto non nafen fansoun pwe repwe angei esap mang seni 7:00 nepwin non Ranin Utut. Seni annukun state, ekkena ballot ra kan angei murin 7:00 nepwin non Ranin Utut resap kan anea.

### Ballots kena seni Posto ra Ngaweno

Mwaan an tongeni me pwan kan fisita. Kose mochen kosapw eaea teipen apungu ika chonuchon, ika maketiwen ren eom kopwe apungu mwaan kena won eom ballot. Ika pwe en ka kan fori ew mwaan, iwe kori achewe ofes ren echo siwinin ballot. Anongonong chok won ekkewe sakosokun (awewe, otun, me pwan ekkoch) chon angangen non ach ofes repwene erenuk ew fichin foforuna epwene mut ngonuk omw kopwene makei omwuna utut. Nge ew chok, kopwe sinei pwe anongonong won ewe otun me pwan sakosokun, ewe fofor epwene kan fitinong eom pusin pwanong ren omw kopwe angei asiwinin ballot pakechiwe ika utut non ew ekkewe neni ren Nenien Angangen Aninisin Chon Utut.

### Utut seni Absentee Ballot (nupwen kose nomw non imw)

Fan Ew Toropwen Amasou “Seasonal” – aa ei toropwe ika pwe en kopwene kan towaw seni imwom nupwen ewe fansoun utut. Omwuwe ballot epwene kan titiwow seni posto ngeni ewe addressin non ei mwochen fansoun en ka kan awora

[Link ren Toropwen Amasou Seasonal](#)



## Nenien Angangen Aninisin Chon Utut

Ren ew fansoun ren enong (10) ranin angang kena me mwan me pwan pachonong ew me ew Ranin Utut, ekewe chon utut repwe makei ew ballot non ew na Nenien Angangen Aninisin Chon Utut. Nupwen ei fansoun, ekewe aramas rese mwo register ar repwe utut me pwan utut. Nengeni maketiwen neni ren Nenien Angangen Aninisin Chon Utut me pwan ekewe ranin ra awora. **Ekkewe nenien Sokun Ranin Utut me mwan esap kan kawor.**

Meinisin ekewe chon utut ra register pwe repwe utut non ewe City & County of Honolulu repwene utut non ekkena neni, nge ese mwo nifinifin ewe precinct ra kan asain ngeni.

Ren atetenin ewe fororun utut, kose mochen pwe kopwe chechemeni pwe kopwe uwato ew noum I.D. ngeni ewe Nenien Angangen Aninisin Chon Utut.

Sokun I.D. repwe etiwa mi pachonong

- Naisinen uwow a katou seni State;
- Katoun card seni State;
- U.S. Military ID;
- Passport mi chok eoch; ika
- Echo toropwen omw momon fifi iei, toropwen bank, check seni muun, toropwe seni muun, ika echo momon check mi mak itom won me pwan omw address iei

Nupwen en ka tori ewe Nenien Angangen Aninisin Chon Utut, kich sipwene kan afanefanok eom kopwe awesano echo toropwen register sefan ika pwe mi tufich

Ika pwe en ese kan wor aiititum mi ketiw, iwe kich sipwene kan eisinuk ren apachonongen porous ren ach sipwe afatano eititumuwe. Ei foror epwene angei pwan pachenongen fansoun

## Nenien ia kopwe Wanong

Ekewe chon utut repwe uwanong ar kewe ballots non ekkewe nenien pworun uwanong ballot ra finita pwe repwe suuk won ika arapakan ewe engon me wanuwen ran me mwan, tori esap mang seni 7:00 nepwin non Ranin Utut. Nengeni ewe maketiwen neni ren Nenien Uwanong me pwan ekewe ranin ra awora

## Angang weiresin non kampein

Esufonun Annukun Hawaii §11-132, me non ewe finitan neni seni ruwepuku fit seni orun ekkena nenien angangen aninisin chon utut, nenien uwanong, me pwan neni mi angang ngenir, ewe apwaranon ika katowowun posterin kampein, ar sain, ika pwan ekkoch mettochun kampein ren ewe popun ren ar repwe angei utut ren ika angaw ngeni emon aramas ika mwichen political ika ew pekin won ew kapasiesen ballot a kan pinepineno

## Atotongenun Chon Utut

Atotongenun Chon Utut

Nenien Angangen Aninisin Chon Utut ra kan ngeni ekewe aramas mi wor terir seni non inis ika seni ewe ofesin unusan. Nenien Angangen Aninisin Chon Utut repwe kan aa fichi pisekin utut repwe kan mut ngeni ekewe chon utut fiti ekkoch sokun terir ren ar repwe pusin tongeni utut won winikaper Ekkena chon wutut ir ra kan mochen aninis ne wutut seni popun ren teririn inisir, ar kuna, ika ar rongorong, ika ar rese tongeni anea ika maak repwene kan ngenir aninis seni emon aramas a finita seni ewe chon wutut - nge epwe kono seni an ewe chon wutut we nenien angang, chon angang ngeni ewe nenien angang, ika chon angang ngeni an ewe chon wutut we union (42 U.S.C. 1973aa-6). **Ofesin ewe City Clerk, TTY – 808-768-3848 (Ese wor kokon kapas ra ponu non ei nampan).**





## **An Chon Utut Arongorong & Awesano**

### **Arongorong ngeni ekewe Chon Utut**

Ika pwe en ka kan fichino ne register pwe kopwe utut, iwe en epwe kan titi ngonuk ew mi aram Arongen Registerun Chon Utut card non ewe maramen Eprein non ewe ierin utut. Ewe card a pwan titiu iteiten fansoun ngeni minafon chon utut ra register me pwan ekkena chon wutut ra register sefan me non ewe ierin utut

### **Awesano Registerun Chon Utut**

Ika pwe en kose chiwen no mochen pwe kopwe emon chon utut mi register, en ka pusin fini pwe kopwene awesano omwuwe registerun chon utut. En kopwene kan pwan awesano ewe registerun chon utut ren emon aramasom a mano. Ewe toropwen awesano epwene kan uwanong ngeni ewe Ofesin ewe City Clerk. Sia fakkun kinisou ren porous repwe kan anisi kich ach sipwe tumunu ew minafa nenien registerun chon utut. Awesano Registerun Chon Utut link

[Cancellation of Voter Registration link](#)



## Kapaseis rakan Eis Iteiten

### FAQ – Aniwinaton ew Ututun Ballot

**Q: Inet ewe saingonon ren eniwinaton neiwe ututun ballot?**

**A:** Annukun State a kan era pwe ututun ballots repwe kan angei me mwan 7:00 nepwin (HST) won Ranin Utut ren ar repwe anea

**Q: Met pwan ekoch mi pwan wor ren ai eniwinato aiwe ballot non posto?**

**A:** En kopwene kan uwanong omwuwe ututun ballot non ekkena Nenien Angangen Anisin Chon Utut ika Nenien Uwanong akaworen pwe ra kan angei me mwan ewe saingonon mi kapas usun me asan

**Q: Ifa usun ai upwe fori ew mwaan won ai we ballot ika fiti ai we envelopen eniwinanong?**

**A:** Kose mochen kopwe kori ach ewe ofes non 808-768-3800 ren naponon

### FAQ - Registerun Chon Utut

**Q: Met ngang upwe kan mochen register ren ai upwe utut?**

**A:** Ewer. Registerun Chon Utut epwene kan fis ren minafon ekewe chon utut

**Q: Inet ngang epwene kan fis ai upwene register sefan ren ai upwe utut?**

**A:** En kopwe kan fori pwe kopwe register sefan ika pwe nenieom ika omw addressin posto a kan siwin, ika en ka kan siwini itom

**Q: Inet ewe saingon registerun chon utut?**

**A:** : Ika pwe en ka kan tongeni register pwe kopwe utut tori ewe 10th ran me mwan ewe utut. Toropwen

amasowen registerun chon utut repwe mak seni posto ika angei me mwan ewe saingonon ran

**Q: Met ekkewe nafen ren registerun omw kopwe utut?**

**A:** Ekewe chon register repwe emon U.S. Citizen, emon chon Hawaii, me pwan esapw kukun seni ier 16 (mwan register)

**Q: Ifa usun ai upwe sinei ika ngang uwa register ai upwe utut?**

**A:** Arongorongen Chon Utut me Afaten Address Postcards (card mi on) repwene kan titiwow non posto non April non ewe ierin utut. En ka kan eochuno ne register pwe kopwe utut ika pwe en ka kan angei ei postcard. En kopwe pwan kori ewe Kinikinin Utut ren 808-768-3800 ren afatan

**Q: Mi auchea an epwe wor an emon address ren ar repwe register ar repwe utut? Nge epwene ian ika ese wor ai address?**

**A:** Ika pwe en ese wor omw addressin neniom, iwe ew eochun tichikin porousen ewe neni ka nonom ia epwe kawor. Ei epwe mut ngeni chon angangen utut ar repwe asainuk ngeni omwuwe fichin district kopwe utut ia.

**Q: Met ngang upwe tongeni wutut ika ngang mi angei ew tipis felony?**

**A:** Emon chon utut epwe tipis ren ew felony, seni ewe fansoun an ewe aramas we a tipis tori an ewe aramas we saingonon katou, esap kan utut non ewe utut. Nge ew chok, ika pwe emon aramas a kan katonong won propeison ika ewe aramas a kan parol murin foforinongen kanupus, iwe ewe aramas meni epwene kan register me pwan utut nupwen ewe fansoun ewe propeison ika parol



## **FAQ - Utut Absentee**

***Q: Epwe ian ika ngang usap nomw ikei nupwen ewe fansoun utut***

**A:** Aa ewe Toropwen Amasou “Seasonal” ika en kosap nom non imwom nupwen ewe fansoun utut. Omwuwe ballot epwene kan titiwow seni posto ngeni ewe addressin non ei mwochen fansoun en ka kan awora

***Q: Met ngang upwe kan aeoeo ren ew absentee ballot ren ew me ew utut***

**A:** Mahimo ka mu-apply ug balota sa absentee, ipadala sa laing mga poluy-an kung kinahanglanun, parEn kopwene kan tungor ew absentee ballot, epwe kan titiwow seni posto ngeni eimunon address kena ika ka mochen, ren ewe Primary me pwan General utut non ewe wewefengenin fansoun



## **An Honolulu Kinikinin Kokorun Porousen Utut**

### **Contact Us**

Ewe Honolulu Kinikinin Utut a nonom non:

Honolulu Hale, City Hall  
Ofesin ewe City Clerk  
530 S. King St, 100  
Honolulu, Hawaii 96813

Awan ofes: 7:45 nesosor tori 4:30 nepwin Sarifan-Enimu, ese pachonong State holidays.

Noun Honolulu Kinikinin Utut Fon: (808) 768-3800

Honolulu Kinikinin Utut ren TTY (ren ekkewe mi osupwang ren pungun seninger ika ar fos):  
(808) 768-3848



## Maketiwen Nenien Angangen Aninisin Chon Utut

### Awan Angang

### Ekewe Neni

#### Primary Election

Sunae 29, 2024 tori Akos 9, 2024  
Sarifan tori Amwon  
8:00 nesosor tori 4:30 nepwin.

Akos 10, 2024  
7:00 nesosor to 7:00 nepwin.

#### General Election

Oktober 22, 2024 tori Nofamper 4, 2024  
Sarifan tori Amwon  
8:00 nesosor tori 4:30 nepwin.

Nofamper 5, 2024  
7:00 nesosor to 7:00 nepwin.

Honolulu Hale Courtyard  
530 South King Street  
Honolulu, HI 96813

Kapolei Hale Conference Rooms  
1000 Uluohia Street  
Kapolei, HI 96707

#### Primary Election

Sunae 29, 2024 tori Akos 2, 2024  
Sarifan tori Enimu  
11:00 nesosor tori 6:30 nepwin

#### General Election

Oktober 22, 2024 tori Oktober 26, 2024  
Oru tori Amwon  
11:00 nesosor tori 6:30 nepwin.

Kaneohe District Park (Rumwen Mwich)  
45-660 Keahala Road  
Kaneohe, HI 96744

#### Primary Election

Akos 5, 2024 tori Akos 9, 2024  
Sarifan tori Enimu  
11:00 nesosor tori 6:30 nepwin.

#### General Election

Oktober 29, 2024 through November 2, 2024  
Oru tori Amwon  
11:00 nesosor tori 6:30 nepwin.

George Fred Wright Wahiawa District Park  
(Ceramic Room)  
1129 Kilani Avenue  
Wahiawa, HI 96786



## Maketiwen Nenien Uwanong

### Awan Angang

#### Primary Election

A suk iteiten ran ren usun chok awan park seni Sunae 23, 2024 tori 7:00 nepwin. non Akos 10, 2024

#### General Election

A suk iteiten ran ren usun chok awan park seni Oktoper 18, 2024 tori 7:00 nepwin. non Nofamper 5, 2024

### Ekewe Neni

Waianae District Park  
85-601 Farrington Highway  
Waianae, HI 96792

Asing Community Park  
91-1450 Renton Road  
Ewa Beach, HI 96706

Bill Balfour Jr. Waipahu  
District Park  
94-230 Paiwa Street  
Waipahu, HI 96797

Mililani Park and Ride  
95-1101 Ukuwai Street  
Mililani, HI 96789

Neal Blaisdell Park  
98-319 Kamehameha  
Highway  
Aiea, HI 96701

Connie Chun Aliamanu  
Neighborhood Park  
4259 Lawehana Street  
Honolulu, HI 96818

Kalihi Valley District Park  
1911 Kamehameha IV Road  
Honolulu, HI 96819

Sunset Beach  
Recreation Center  
59-540 Kamehameha  
Highway  
Haleiwa, HI 96712

Kaneohe District Park  
45-660 Keaahala Road  
Kaneohe, HI 96744

Kailua District Park  
21 South Kainalu Drive  
Kailua, HI 96734

Hawaii Kai Park and Ride  
240 Keahole Street  
Honolulu, HI 96825

Waiialae Iki  
Neighborhood Park  
4888 Analii Street  
Honolulu, HI 96821

Kanewai Community Park  
2695 Dole Street  
Honolulu, HI 96822



## Maketiwen Nenien Uwanong (soposo pono)

### Awan Angang

### Ekewe Neni

#### Primary Election

A suk iteiten ran seni Sunae 23, 2024 tori 7:00 nepwin  
non Akos 10, 2024

Honolulu Hale  
530 South King Street  
Honolulu, HI 96813

#### General Election

A suk iteiten ran seni Oktober 18, 2024 tori 7:00 nepwin  
non Nofamper 5, 2024

Kapolei Hale  
1000 Uluohia Street  
Kapolei, HI 96707



## Toropwen Amasou Registerun Chon Utut (Emwenin Pekin Chiaku)

Kinikin	English	Chuukese
	Registration online at <a href="http://elections.hawaii.gov">elections.hawaii.gov</a>	Registerun online won <a href="http://elections.hawaii.gov">elections.hawaii.gov</a>
<b>1</b>	<p>Do you meet these qualifications:</p> <p>Are you a citizen of the United States of America?</p> <p>Are you at least 16 years of age? (Must be 18 to vote)</p> <p>Are you a resident of the State of Hawaii?</p> <p>If you answered “No” to any of the above, DO NOT complete the form.</p> <p>The residence stated in this affidavit is not simply because of my presence in the State, but was acquired with the intent to make Hawaii my legal residence with all the accompanying obligations therein.</p>	<p>Met en ka tikeri ekei mochen epwe ponuweta:</p> <p>Met en emon citizenin ewe United States of America?</p> <p>En ka mwaren 16 ierum? (Kopwe 18 omw kopwe tongeni utut)</p> <p>Met en emon chon ewe State of Hawaii?</p> <p>Ika pwe en ka ponuweni “Apw” ngeni ew ekkewe asan, iwe KOSAPW awesano ewe toropwe.</p> <p>Ewe nenien nonom a kan kapas usun non ei toropwe esapw chok ren pokiten ren ai nom non ewe State, nge a kan angei fiti ai ekkieki ai upwene fori pwe Hawaii ai nenien nonom seni annuk fiti meinisin ekkewe met upwe fofori ra kan fitngeni.</p>
<b>2</b>	<p>Last Name</p> <p>First Name</p> <p>Middle Initial (M.I.)</p> <p>Suffix (Jr, II)</p>	<p>Nasinon Itom</p> <p>Ewin Itom</p> <p>Maken Nukenapen Itom (M.I.)</p> <p>Nesopwonon aiten (Jr, II)</p>
<b>3</b>	<p>HI Driver License or HI State ID Number (if you do not have either, complete box 3b)</p>	<p>HI Naisenin Uwouw ika HI State ID Namapa (ika pwe ese kan wor ew ika ew, awesano pwor 3b)</p>
<b>3B</b>	<p>I do not have a HI Driver License, HI State ID, or SSN</p>	<p>Ese kan wor nei HI Naisenin Uwouw, HI State ID, ika SSN</p>





Kinikin	English	Chuukese
4	<p>Date of Birth</p> <p>Phone Number</p> <p>Email</p>	<p>Ranin Uputiwom</p> <p>Nampan Fon</p> <p>Email</p>
5	<p>If you are disabled and unable to read standard print, would you like to receive an electronic ballot?</p> <p>Yes, I am disabled and unable to read standard print and would like to request an electronic ballot to be sent to my email indicated on this application</p> <p>Applicant must provide an email address to receive an electronic ballot.</p>	<p>Ika pwe en mi wor terem me kose tongeni aneani founfoun mesen mak, met en ka kan mochen kopwe angei ew electronic ballot? Ewer, ngang mi wor teri me use tongeni aneani founfoun mesen mak me pwan mochen upwe tingor ren ew electronic ballot ren an epwe tinano aiwe email a afateti non ei toropwen amasou.</p> <p>Chon Amasou repwe awora ew email address ren an epwe angei ew electronic ballot.</p>
6	<p>Residence Address (P.O. Box, R.R., S.R., are not acceptable)</p> <p>Mailing Address in Hawaii</p> <p>Same as Residence Address</p> <p>Apt. Number</p> <p>City</p> <p>Zip Code</p> <p>If your residence does not have a street address, describe the location (cross streets, landmarks).</p>	<p>Addressin Nenien (P.O. Box, R.R., S.R., resapw etiwa)</p> <p>Addressin Toropwen Posto non Hawaii</p> <p>Mi usun chok Addressin Nenien</p> <p>Apt. Nampan</p> <p>City</p> <p>Zip Code</p> <p>Ika pwe omw nenien nonom ese kan wor ew addressin an, aporosa ewe neni (streets mi chufengen, esisinen non ewe neni).</p>
7	<p>Are you registered to vote in another state?</p> <p>Yes, I hereby authorize cancellation of my previous registration at the following address, county, state, and zip code.</p>	<p>Met en mi register omw kopwe utut non pwan ew state?</p> <p>Ewer, Ngang uwa mutata awesinon ai we registration me mwan ren ewe address, county, state, me zip code.</p>



## Kinikin

## English

## Chuukese

8

Warning: Any person who knowingly furnishes false information may be guilty of a Class C felony.

I hereby swear (or affirm) that all information furnished on this application is true and correct.

If you are unable to sign, mark the signature line and have a witness provide their signature, address and phone number.

Sign Here

Date

Office Use Only

ID Number

Location Code

Document Number

Notice: The identity of the voter registration agency through which any voter was registered shall not be publicly disclosed. A person's declination to register to vote is also confidential and is used for voter registration purposes only (National Voter Registration Act of 1993).

Kapasen amwon: Ekkena aramas ir ra kan sinei pwe ra kan aworanong porous mi mwaan meni repwene kan tipis seni ew Class C felony.

Ngang uwa pwon (ika afatano)pwe meinisin porous uwa wanong non ei toropwen amasou mi wenechar me pung.

Ika pwe en kose kan tongeni saini, makei chok ewe nainen sainin me pwan angei emon chon kuna epwe awora ar sainin, address me pwan nampan fon.

Sainei ikei

Ranin

Aan Chok Ofes

Nampan ID

Coden Nenien Nonom

Nampan Toropwe

Kopwe sinei: Iten ewe ofesin registerun chon utut ina ewe chon utut a register me non esapw pwano ngeni aramas meinisin. An emon aramas ese mochen register pwe epwe utut a pwan pinepineno me pwan chok aan ren popun registerun chon utut chok (Annukun Registerun Chon Utut non Unusen Fonu seni 1993).

# Hawaii Voter Registration Application

Please print clearly in black ink.

Register online at [elections.hawaii.gov](https://elections.hawaii.gov)

**1** **Do you meet these qualifications:**

Are you a citizen of the United States of America?	<input type="checkbox"/> Yes	<input type="checkbox"/> No
Are you at least 16 years of age? (Must be 18 to vote)	<input type="checkbox"/> Yes	<input type="checkbox"/> No
Are you a resident of the State of Hawaii?	<input type="checkbox"/> Yes	<input type="checkbox"/> No

**If you answered "No" to any of the above, DO NOT complete this form.**

**The residence stated in this affidavit is not simply because of my presence in the State, but was acquired with the intent to make Hawaii my legal residence with all the accompanying obligations therein.**

**2**

Last Name	First Name	M.I.	Suffix (Jr., II)
-----------	------------	------	------------------

**3** HI Driver License or HI State ID Number  
**If you do not have either, complete box 3b.**

**3b**

<input type="checkbox"/> I do not have a HI Driver License or HI State ID Provide the last 4 digits of your Social Security Number.	<input type="text"/>	<input type="text"/>	<input type="text"/>	<input type="text"/>
<input type="checkbox"/> I do not have a HI Driver License, HI State ID, or SSN				

**4**

Date of Birth	Phone Number	Email
---------------	--------------	-------

**5** If you are disabled and unable to read standard print, would you like to receive an electronic ballot?

Yes. I am disabled and unable to read standard print and would like to request an electronic ballot be sent to my email indicated on this application. **Applicant must provide an email address to receive an electronic ballot.**

**6**

Residence Address (P.O. Box, R.R., S.R., are <u>not</u> acceptable)	Apt. Number	City	Zip Code
Mailing Address in Hawaii <input type="checkbox"/> Same as Residence Address	Apt. Number	City	Zip Code

**If your residence does not have a street address, describe the location (cross streets, landmarks).**

**7** **Are you registered to vote in another state?**  Yes. I hereby authorize cancellation of my previous registration at the following address, county, state, and zip code.

**Warning: Any person who knowingly furnishes false information may be guilty of a Class C felony.**  
I hereby swear (or affirm) that all information furnished on this application is true and correct.

**8**

**SIGN HERE** ▶

<div style="border: 1px solid black; height: 80px; width: 100%;"></div>	Date
---	------

**If you are unable to sign, mark the signature line and have a witness provide their signature, address, and phone number.**

<b>OFFICE USE ONLY</b>	ID Number	Location Code <b>CC22</b>	Document Number	
------------------------	-----------	------------------------------	-----------------	---

**Notice:** The identity of the voter registration agency through which any voter was registered shall not be publicly disclosed. A person's declination to register to vote is also confidential and is used for voter registration purposes only (National Voter Registration Act of 1993).



## Hawaii Votes by Mail

All registered voters will be automatically sent a ballot to their mailing address in Hawaii associated with their voter registration.

## First time Voter Mailing this Application

If you are registering to vote for the first time in the State of Hawaii, mailing this application, and do not have a Hawaii Driver License, Hawaii State ID, or the last 4-digits of your Social Security Number, you are required to provide proof of identification. Proof of identification includes a copy of:

- A current and valid photo identification; or
- A current utility bill, bank statement, government check, paycheck, or other government document that shows your name and address.

## Submitting Your Application

<b>County of Hawaii</b>	<b>County of Kauai</b>
25 Aupuni St. #1502 Hilo, HI 96720	4386 Rice St. #101 Lihue, HI 96766
<b>County of Maui</b>	<b>City &amp; County of Honolulu</b>
200 S. High St. Wailuku, HI 96793	530 S. King St. #100 Honolulu, HI 96813

## Language Assistance

Para kadagiti naipatarus a materiales a mainaig iti eleksion wenno tulong iti lengguahe tapno makompletoyo daytoy nga aplikasion, awagan ti Opisina Dagiti Eleksion (**Office of Elections**).

Para sa mga isinalin na babasahin tungkol sa eleksyon o upang makatanggap ng tulong sa wika sa pagkumpleto ng aplikasyon na ito, makipag-ugnayan sa Tanggapan ng mga Eleksyon (**Office of Elections**).

若想獲得電子檔的翻譯材料，或者需要協助填表事宜，請聯繫選舉辦公室 (**Office of Elections**)。

## Contact Us

For information about registering to vote, contact your **County Elections Division**.

**County of Hawaii** ..... (808) 961-8277  
**County of Maui**..... (808) 270-7749  
**County of Kauai**..... (808) 241-4800  
**City & County of Honolulu**.. (808) 768-3800

For additional voting information, contact the **Office of Elections**.

**Phone:** (808) 453-VOTE (8683)  
**Toll Free:** 1-800-442-VOTE (8683)  
**TTY:** (808) 453-6150  
**Toll Free TTY:** 1-800-345-5915  
**Email:** elections@hawaii.gov  
**Website:** elections.hawaii.gov



# Voter Registration Application

## This application can be used for:

- First time registration
- Name change
- Address change
- Signature update





## Toropwen Amasou Chon rese nomw non Hawaii (Emwenin Pekin Chiaku)

Kinikin	English	Chuukese
	<p>This application will authorize your ballot to be mailed to a temporary alternate address and will be valid only for the election year in which it was submitted.</p> <p>Please print clearly in black ink.</p>	<p>Ei toropwen amasou epwe mutata omwuwe ballot ren an epwe titii me non posto ngeni ew mochomwochen siwinin address me epwene kan chok fich ren ewe ierin utut ina a kan uwanong.</p> <p>Kose mochen afata omw mak non ink mi chon.</p>
<b>1</b>	<p>I am requesting an absentee ballot for the following election(s):</p> <p>Primary Only</p> <p>General Only</p> <p>Primary &amp; General</p> <p>Special</p>	<p>Ngang uwa kan tingor ew absentee ballot ren ekkewe utut mi tapweto:</p> <p>Primary Chok</p> <p>General Chok</p> <p>Primary &amp; General</p> <p>Special</p>
<b>2</b>	<p>Last Name</p> <p>First Name</p> <p>M.I.</p> <p>Suffix (Jr., II)</p>	<p>Nasinon Itom</p> <p>Ewin Itom</p> <p>M.I.</p> <p>Nesopwonon aiten (Jr, II)</p>
<b>3</b>	<p>HI Driver License or HI State ID Number (if you do not have either, complete box 3b)</p>	<p>HI Naisenin Uwouw ika HI State ID Namapa (ika pwe ese kan wor ew ika ew, awesano pwor 3b)</p>
<b>3B</b>	<p>I do not have a HI Driver License or HI State ID</p> <p>Provide the last 4 digits of your Social Security Number</p> <p>I do not have a HI Driver License, HI State ID, or SSN</p>	<p>Ese kan wor nei HI Naisenin Uwouw, HI State ID</p> <p>Awora ekkewe nasinon 4 nampan noum Nampan Social Security</p> <p>Ese kan wor nei HI Naisenin Uwouw, HI State ID, ika SSN</p>



Kinikin	English	Chuukese
4	Date of Birth Phone Number Email	Ranin Uputiwom Nampan Fon Email
5	If you are disabled and unable to read standard print, would you like to receive an electronic ballot?  Yes, I am disabled and unable to read standard print and would like to request an electronic ballot to be sent to my email indicated on this application	Kung ikaw naay kabilinggan o dili makabasa ug standard na print, ganahan baka makadawat ug elektronik na balota?  Oo, naa ko kabilinggan ug dili kabasa ug standard na print, ug ganahan ko muhangyo ug elektronik na balota na ipadala sa email nakabutang sa akong aplikasyon.
	Applicant must provide an email address to receive an electronic ballot.	Chon amasou repwe awora ew email address ren an epwe angei ew electronic ballot.
6	Residence Address (P.O. Box, R.R., S.R., are not acceptable) Mailing Address in Hawaii Same as Residence Address Apt. Number City Zip Code	Addressin Nenien (P.O. Box, R.R., S.R., resapw etiwa) Addressin Toropwen Posto non Hawaii Mi usun chok Addressin Nenien Apt. Nampan City Zip Code
	If your residence does not have a street address, describe the location (cross streets, landmarks).	Ika pwe omw nenien nonom ese kan wor ew addressin an, aporoua ewe neni (streets mi chufengen, esisinen non ewe neni).
7	Address to Mail Primary Ballot Hold for arrival Address to Mail General Ballot Hold for arrival	Address repwene Titino seni Posto Primary Ballot Witiwit ren atouroton Address repwene Tinano seni Posto General Ballot Witiwit ren atouroton



Kinikin	English	Chuukese
---------	---------	----------

8

Warning: Any person who knowingly furnishes false information may be guilty of a Class C felony.

Kapasen amwon: Ekkena aramas ir ra kan sinei pwe ra kan aworanong porous mi mwaan meni repwene kan tipis seni ew Class C felony.

I hereby swear (or affirm) that all information furnished on this application is true and correct.

Ngang uwa pwon (ika afatano)pwe meinisin porous uwa wanong non ei toropwen amasou mi wenechar me pung.

If you are unable to sign, mark the signature line and have a witness provide their signature, address and phone number.

Ika pwe en kose kan tongeni saini, makei chok ewe nainen sainin me pwan angei emon chon kuna epwe awora ar sainin, address me pwan nampan fon.

Sign Here

Sainei ikei

Date

Ranin

Office Use Only

Aan Chok Ofes

Primary Mailed

Primary a kan Titiu seni Posto

Primary Received

Ra kan Angei Primary

Remarks

Chekini sefani

General Mailed

General a kan Titiwow seni Posto

General Received

Ra kan Angei General

D/P

D/P

Document Number

Nampan Toropwe

Notice: The identity of the voter registration agency through which any voter was registered shall not be publicly disclosed. A person's declination to register to vote is also confidential and is used for voter registration purposes only (National Voter Registration Act of 1993).

Kopwe sinei: Iten ewe ofesin registerun chon utut ina ewe chon utut a register me non esapw pwano ngeni aramas meinisin. An emon aramas ese mochen register pwe epwe utut a pwan pinepineno me pwan chok aan ren popun registerun chon utut chok (Annukun Registerun Chon Utut non Unusen Fonu seni 1993).

# Hawaii Absentee Ballot Application

This application will authorize your ballot to be mailed to a temporary alternate address and will be valid only for the election year in which it was submitted.

Please print clearly in black ink.

1 I am requesting an absentee ballot for the following election(s):  
 Primary Only     General Only     Primary & General     Special

2 Last Name \_\_\_\_\_ First Name \_\_\_\_\_ M.I. \_\_\_\_\_ Suffix (Jr., II) \_\_\_\_\_

3 HI Driver License or HI State ID Number  
**If you do not have either, complete box 3b.**

3b  I do not have a HI Driver License or HI State ID  
**Provide the last 4 digits of your Social Security Number.** [ ][ ][ ][ ]

I do not have a HI Driver License, HI State ID, or SSN

4 Date of Birth \_\_\_\_\_ Phone Number \_\_\_\_\_ Email \_\_\_\_\_

5 If you are disabled and unable to read standard print, would you like to receive an electronic ballot?  
 Yes. I am disabled and unable to read standard print and would like to request an electronic ballot be sent to my email indicated on this application. **Applicant must provide an email address to receive an electronic ballot.**

6 Residence Address (P.O. Box, R.R., S.R., are not acceptable) \_\_\_\_\_ Apt. Number \_\_\_\_\_ City \_\_\_\_\_ Zip Code \_\_\_\_\_

Mailing Address in Hawaii  Same as Residence Address    Apt. Number \_\_\_\_\_ City \_\_\_\_\_ Zip Code \_\_\_\_\_

**If your residence does not have a street address, describe the location (cross streets, landmarks).**

7 Address to Mail Primary Ballot  Hold for arrival    Address to Mail General Ballot  Hold for arrival

\_\_\_\_\_  
\_\_\_\_\_  
\_\_\_\_\_


**Warning: Any person who knowingly furnishes false information may be guilty of a Class C felony.**

I hereby swear (or affirm) that all information furnished on this application is true and correct.

8 **SIGN HERE** ▶ \_\_\_\_\_ Date \_\_\_\_\_

**If you are unable to sign, mark the signature line and have a witness provide their signature, address, and phone number.**

OFFICE USE ONLY	Primary Mailed	Primary Received	Remarks	<input type="checkbox"/> HRS §11-20	Document Number
	General Mailed	General Received	Clerk		



**Notice:** The identity of the voter registration agency through which any voter was registered shall not be publicly disclosed. A person's declination to register to vote is also confidential and is used for voter registration purposes only (National Voter Registration Act of 1993).



## Notice

You must be registered to vote in Hawaii to receive an absentee ballot. Confirm your voter registration or register to vote online at [elections.hawaii.gov](https://elections.hawaii.gov).

You may also submit a Voter Registration Application.

## Submitting Your Application

**County of Hawaii**    **County of Kauai**  
25 Aupuni St. #1502    4386 Rice St. #101  
Hilo, HI 96720    Lihue, HI 96766

**County of Maui**    **City & County of Honolulu**  
200 S. High St.    530 S. King St. #100  
Wailuku, HI 96793    Honolulu, HI 96813

## Deadline to Submit Application

Applications must be received by your County Elections Division no later than **7 days before Election Day**.

## Language Assistance

Para kadagiti naipatarus a materiales a mainaig iti eleksion wenno tulong iti lengguahe tapno makompletoyo daytoy nga aplikasion, awagan ti Opisina Dagiti Eleksion (**Office of Elections**).

Para sa mga isinalin na babasahin tungkol sa eleksyon o upang makatanggap ng tulong sa wika sa pagkumpleto ng aplikasyon na ito, makipag-ugnayan sa Tanggapan ng mga Eleksyon (**Office of Elections**).

若想獲得電子檔的翻譯材料，或者需要協助填表事宜，請聯繫選舉辦公室 (**Office of Elections**)。

## Contact Us

For information about registering to vote, contact your **County Elections Division**.

**County of Hawaii**..... (808) 961-8277  
**County of Maui**..... (808) 270-7749  
**County of Kauai**..... (808) 241-4800  
**City & County of Honolulu**.. (808) 768-3800

For additional voting information, contact the **Office of Elections**.

**Phone:** (808) 453-VOTE (8683)  
**Toll Free:** 1-800-442-VOTE (8683)

 **TTY:** (808) 453-6150  
**Toll Free TTY:** 1-800-345-5915

**Email:** [elections@hawaii.gov](mailto:elections@hawaii.gov)  
**Website:** [elections.hawaii.gov](https://elections.hawaii.gov)

# Absentee Ballot Application

**You must be registered to vote in Hawaii to receive an absentee ballot.**

This application will authorize your ballot to be mailed to a temporary alternate address and will be valid only for the election year in which it was submitted.





## Toropwen utut non foufoun aramas (Emwenin Pekin Chiaku)

Kinikin	English	Chuukese
	Please print clearly in black ink. I hereby swear (or affirm) that the following information is true and correct:	Kose mochen afata omw mak non ink mi chon.  Ngang iei uwa kan pwon (ika afatano) pwe ekkewe porous mi tapwoto mi kan wenechar me pung:
	Office Use Only Voter ID No.	Aan Chok Ofes Noun Chon Utut ID No.
<b>1</b>	HI Driver's License Number  HI State ID Number  Social Security Number's last 4-digits	HI Nampan Naisenin Uwouw  HI State Nampan ID  Nasinon 4 nampan kewe seni Nampan Social Security
<b>2</b>	Date of Birth (mm/dd/yy)	Ranin Uputiw (mm/dd/yy)
<b>3</b>	Last Name  First Name  M.I.	Nasinon Itom  Ewin Itom  M.I.
<b>4</b>	Residence Address (Must be completed. P.O. Box, R.R., S.R., are not acceptable)  Apt. Number  City/Town  Zip Code	Addressin Nenien Nonom (Epwe kan awesano. P.O. Box, R.R., S.R., resapw etiwa)  Apt. Nampan  City/Town  Zip Code
<b>5</b>	Mailing Address in Hawaii (Street address or PO Box)  Same as Residence Address  City/Town  Zip Code	Addressin Taropwe seni Posto non Hawaii (Addressin an ika PO Box)  Mi usun chok Addressin Nenien  City/Town  Zip Code



Kinikin	English	Chuukese
<b>6</b>	<p>If no street address, describe location of residence (Leave blank if #4 is completed).</p> <p>City/Town</p> <p>Zip Code</p>	<p>Ika pwe ese wor addressin an, aporaus usun nenien ewe nenien nonom (Kosap amasowa ika pwe #4 mi kan awesino).</p> <p>City/Town</p> <p>Zip Code</p>
<b>7</b>	<p>Same Day/Election Day Voter Registration Affidavit or Voter Info Update</p> <p>I hereby swear (or affirm) that:</p> <p>For Federal, State, and County Elections:</p>	<p>Ewe chok Ran/Toropwen Ranin Utut Registerun Chon Utut ika Asofon Porousen Chon Utut</p> <p>Ngang iei uwa kan pwon (ika afatano) pwe:</p> <p>Ren Muunap, State, me County Utut:</p>
<b>A</b>	<p>I am a citizen of the United States of America (Non-U.S. citizens including U.S. nationals do not qualify)</p> <p>Yes / No</p>	<p>Ngang emon citizenin ewe United States ren America (Esap- U.S. citizen mi pachonong chon non U.S rese ketiw)</p> <p>Ewer/Apw</p>
<b>B</b>	<p>I am at least 16 years of age and I understand that I must be 18 years old by election day to vote</p> <p>Yes / No</p>	<p>Ngang usapw kukun seni 16 ierum me pwan ngang uwa weweiti pwe ngang upwe ier 18 me mwan ranin utut ren ai upwe tongeni utut</p> <p>Ewer/Apw</p>
<b>C</b>	<p>I am a resident of the State of Hawaii</p> <p>Yes / No</p>	<p>Ngang emon chon ewe State of Hawaii</p> <p>Ewer/Apw</p>
<b>D</b>	<p>I have not and will not vote at any other voter service center for this election, and I have not and will not cast any other ballot for this election: and</p>	<p>Ngang usan mo me pwan usapw kan utut non ew ekkena nenien angangen aninisin chon wutut ren ei utut, me pwan usapw maakei ew ekkena pwan ekkoch ballot ren ei utut: me</p>
<b>E</b>	<p>I acknowledge that providing false information may result in a class C felony, punishable by a fine not exceeding \$1,000 or imprisonment not exceeding five years, or both.</p> <p>Signature</p> <p>Date</p>	<p>Ngang uwa sinei pwe aworan poraus mi mwaan epwene kan punguno non ew class C felony, a kan tipis seni ew paking esapw nap seni \$1,000 ika kanipus esapw wate seni nimu ier, ika me ruu.</p> <p>Sainin</p> <p>Ranin</p>



Kinikin	English	Chuukese
<p><b>8</b></p>	<p>Read and Sign ONLY Upon Receipt of Your Ballot</p> <p>I hereby swear (or affirm) that: 1) I am the person named above: 2) I am requesting an in-person ballot for myself and no other; and 3) all information furnished on this application is true and correct.</p> <p>Signature</p> <p>Date</p>	<p>Aneani me pwan Sainei CHOK Nupwen ka kan Angei Omwuwe Ballot</p> <p>Ngang iei uwa kan pwon (ika afatano) pwe: 1) Ngang ewe aramas ra aita me asan: 2) Ngang uwa tingor ren ew non aramas ballot ren pusin ngang me pwan esapw pwan wor emon; me pwan 3) meinisin porous a kawor won ei toropwen amasou mi wenechar me pung.</p> <p>Sainin</p> <p>Ranin</p>
	<p>If you are unable to sign, mark the signature area and have a witness provide signature, address and phone number below.</p> <p>Witness Signature</p> <p>Date</p> <p>Address</p> <p>Phone No.</p>	<p>Ika pwe en kose kan tongeni saini, makei chok ewe nenien sainin me pwan angei emon chon kuna epwe awora sainin, address me pwan nampan fon me fan.</p> <p>Sainin Chon Kuna</p> <p>Ranin</p> <p>Address</p> <p>Nampan Fon</p>
	<p>District/Precinct</p> <p>Clerk</p> <p>For Office Use Only</p> <p>Location Code</p> <p>Notice: The identity of the voter registration agency through which any voter was registered shall not be publicly disclosed. A person's declination to register to vote is also confidential and is used for voter registration purposes only (National Voter Registration Act of 1993).</p>	<p>District/Precinct</p> <p>Clerk</p> <p>Aan Chok Ofes</p> <p>Coden Nenien Nonom</p> <p>Kopwe sinei: Iten ewe ofesin registerun chon utut ina ewe chon utut a register me non esapw pwano ngeni aramas meinisin. An emon aramas ese mochen register pwe epwe utut a pwan pinepineno me pwan chok aan ren popun registerun chon utut chok (Annukun Registerun Chon Utut non Unusen Fonu seni 1993).</p>

# Application for In-Person Ballot

Important: Print clearly in dark ink <b>I hereby swear (or affirm) that the following information is true and correct:</b>		<i>Office Use Only</i> Voter ID No.	
1	HI Driver's License Number, HI State ID Number or Social Security Number's last 4-digits	2	Date of Birth (mm/dd/yy)
3	Last Name	First Name	M.I.
4	Residence Address (Must be completed. P.O. Box, R.R., S.R. are not acceptable)	Apt. No.	City/Town    Zip
5	Mailing Address in Hawaii (Street address or P.O. Box)		City/Town    Zip
6	If no street address, describe location of residence (Leave blank if box #4 is completed)		City/Town    Zip

**Warning: Any person who knowingly furnishes false information may be guilty of a class C felony.**

## Same Day / Election Day Voter Registration Affidavit OR Voter Info Update

I hereby swear (or affirm) that:  
 For Federal, State, and County Elections:

A. **I am a citizen of the United States of America** .....  YES     NO  
(Non-U.S.citizens including U.S. nationals do not qualify).

B. **I am at least 16 years of age and I understand that I must be 18 years old by election day to vote** .....  YES     NO

C. **I am a resident of the State of Hawaii** .....  YES     NO  
(The residence stated in this affidavit is not simply because of my presence in the State, but that the residence was acquired with the intent to make Hawaii my legal residence with all the accompanying obligations therein...)

D. **I have not and will not vote at any other polling place for this election, and I have not and will not cast any other ballot for this election; and**

E. **I acknowledge that providing false information may result in a class C felony, punishable by a fine not exceeding \$1,000 or imprisonment not exceeding five years , or both.**

Signature

Date

## Read and Sign ONLY Upon Receipt of Your Ballot

I hereby swear (or affirm) that: 1) I am the person named above; 2) I am requesting an in-person ballot for myself and no other; and 3) all information furnished on this application is true and correct.

Signature

Date

If you are unable to sign, mark the signature area and have a witness provide signature, address and phone number below.

Witness Signature \_\_\_\_\_ Date \_\_\_\_\_

Address \_\_\_\_\_ Phone No. \_\_\_\_\_

DISTRICT/PRECINCT	CLERK	FOR OFFICE USE ONLY	I.D. No.	VSCH / VSCK / EDRH / EDRK	Location Code	98
-------------------	-------	---------------------	----------	---------------------------	---------------	----



## Nenien Angangen Aninisin Chon Utut FAQ:

### REGISTERUN CHON UTUT

utut, iwe en kosapw pwan register sefan ren ew me ew utut. Register sefan epwene kan fis chok ika pwe en ka kan mokut ika en ka kan siwini itom seni annuk.

Ekewe chon register repwe emon U.S. Citizen, emon chon Hawaii, me pwan esapw kukun seni ier 16 (mwan register). Fiti noumuwe toropwen amasou, kose mochen awora echo minafon me sasingen ID mi minafo iei, passport ika echo taropwen omw momon fifi iei, toropwen bank, check seni muun, toropwe seni muun, ika echo momon check mi mak itom won me pwan omw address iei.

Nupwen mi wor ew registerun chon utut saigon a foruta ren ewe 10thran me mwen ewe Ranin Utut en kopwe sopesopono ne register non ew fansoun ese nifinifin seni omw aa ewe Systemin Registerun Chon Utut Online ika non fofoun aramas non ewe Nenien Angangen Aninisin Chon Utut.

En kopwene kan afatano omwuwe registerun utut online won <http://www.olvr.hawaii.gov> seni omw awora ew fichin an Hawaii Naisenin Uwouw ika nampan Hawaii State ID, me pwan ekkewe ruwanu saingon nampan noum Social Security Number. En kopwe pwan kori ach ewe ofes ren (808) 768-3800. Kose mochen kopwe mon eom kopwe awora itom, addressin imwom, me pwan ranin uputiwom ren ach sipwe afatano ususum

### REGISTERUN CHON UTUT - MET KOPWE FOFORI REN ADDRESSIN NENIOM

P. O. Box me pwan addressin pisnis resap etiwa pwe ir addressin nenien nonom. Ika pwe en ese kan wor omw ew addressin neniom, iwe ew eochun tichikin porousen ewe neni ikewe en ka nonom ia epwene kan kawor. Ew addressin nenien nonom epwe mut ngeni chon angangen utut ar repwe asainuk ngeni ewe district kopwe utut ia.

### UTUT ABSENTEE (KOSE NOMW NON IMWOW EWE)

Aa ewe "Toropwen Amasou Seasonal" ika en kosap nom non imwom nupwen ewe fansoun utut. Ika mi mochen, ka tingor ew absentee ballot, ren ewe Primary me pwan General utut non ewe wewefengenin fansoun me pwan angeir pwe repwe titiu seni posto ngeni eimunon ekewe address. Ututun absentee ballots kena repwe kan angei me mwan 7:00 nepwin (HST) won Ranin Utut ren ar repwe aneani. A kan seni Annukun State, absentee ballots rakan angeir murin ena fansoun resap kan aneani.

### UTUT - UTUTUN PRIMARY

Ewe State of Hawaii a fori ew chok Ututun Primary ren ew party. Repwe emwenuk omw kopwe ewin fini emwuwe political party me mwan omw kopwe sopweino ngeni forun finin noum candidate kena. Ekewe Political party candidates repwe maketiwi non eimunon kinikin won ewe ballot. Chomongen utut party ESE kan mumuta.

Maketiwi: Hawaii ese angei ew ututun primary ren finien president.

### UTUT - OPUNGU MWAAN WON OMWUWE BALLOT IKA ENVELOP

Ika pwe en ka kan fori ew mwaan won omwuwe ballot ika aniwinationon envelop, kose mochen kosap aa teipen opungu ika chonuchon kena, ika maketiwi ren omw kopwe opungu mwaan won omw ballot. Kokori ach ewe ofes ren (808) 768-3800 ren echo siwinin ballot. Anongonong won ewe otun me pwan sokosokun, iwe nouch chon angang repwe erenuk ew fichin fofor ina epwe fitinong omw pusin pwanong ren omw kopwe angei siwinin ballot ika utut non ew ekkewe neni ren Nenien Angangen Aninisin Chon Utut.



## **UTUT - NENIEN REN UWANONGEN ME SAINGON**

En kopwene kan uwanong omwuwe ututun ballot non ekkena Neni Angangen Aninisin Chon Utut ika Neni Uwanong akaworen pwe ra angei me mwan 7:00 nepwin. non ewe Ranin Utut. Ren ekewe maketiwen neni me awan ar angang, tota won [www.honoluluelections.us](http://www.honoluluelections.us).

## **ANGANG WEIRESIN NON KAMPEIN**

Esufonun Annukun Hawaii §11-132, me non ewe finitan neni seni ruwepuku fit seni orun ekkena neni angangen aninisin chon utut, neni uwanong, me pwan neni mi angang ngenir, ewe apwaranon ika katowowun posterin kampain, ar sain, ika pwan ekkoch mettochun kampain ren ewe popun ren ar repwe angei utut ren ika angaw ngeni emon aramas ika mwichen political ika ew pekin won ew kapasiesen ballot a kan pinepineno.



## Emwenin Utut (Emwenin Pekin Chiaku)

### English

### Chuukese

#### Make Your Vote Count

#### Fori pwe Omw Utut epwe Anea

##### Mark Your Ballot

Completely fill in the box to the left of your choice with a black or blue pen.

If you vote for more candidates than allowed, your votes for that contest will not be counted.

If you make a mistake, contact your County Elections Division for a replacement. Do not use whiteout.

You will not be issued a replacement ballot once your ballot has been received by your County Elections Division

##### Makei Omwuwe Ballot

Ounusano amasowanongen ewe pwor ngeni ewe peniengaw seni finiomwuwe fiti efoch pen mi chon ika araw.

Ika pwe en ka kan utut ren chomong candidates smi mumuta, iwe omw utut ren ewe asosot fengen esapw anea.

Ika pwe en ka kan fori ew mwaan, kori omwuwe Kinikinin Utut non omwuwe County ren echo siwinin ballot. Kosapw aa totonun pen.

En kosap kan angei ew katowowun siwinin ballot nupwen chok omwuwe ballot ra kan angei seni omwuwe Kinikinin Utut non omwuwe County

#### Seal and Sign Your Return Envelope

Re-fold your ballot and place in the ballot secrecy sleeve. The ballot secrecy sleeve keeps your votes anonymous while being processed for counting.

Place the ballot secrecy sleeve in the return envelope.

SIGN and seal the return envelope. Your ballot will not be counted without your signature.

#### Sealinano me pwan Sainei Omuwe Eniwinong Envelop

Tukumi sefani omwuwe ballot me pwan isenanong non ewe nenien tumunun ballot. Ewe nenien tumunun ballot epwe imwunu seni omwuwe ballot pwe esapw wor epwe sinei seni io nupwen foforon ren an epwe anea.

Iseanong ewe nenien tumunun ballot non ewe eniwinanong envelop.

Sainei me pwan sealinano ewe eniwiningun envelop. Omwuwe ballot esapw anea ika pwe kese sainei.





## English

## Chuukese

### Return Your Ballot

The return envelope is pre-addressed and postage-paid.

Your voted ballot must be received by the County Elections Division by 7:00 pm on Election Day, August 10, 2024

When dropping your ballot in the mail, send it 3 days prior to Election Day to ensure it is received by the deadline.

Alternatively, places of deposit are established to drop off your voted ballot.

### Eniwinato Omwuwe Ballot

Ewe eniwinaton envelop a kan address me mwan me pwan momono mon ren posto.

Omwuwe ututun ballot epwene kan angei me seni ewe Kinikinin Utut non omwuwe County me mwan 7:00 nepwnin won Ranin Utut, Akos 10, 2024

Nupwen en ka kan uwanong omwuwe ballot non ewe posto, tinanong 3 ran me mwan Ranin Utut ren an epwe tumunu pwe ra angei me mwan ewe saingonon.

Esiwininon, nenien uwanongen ra kan forita 5 ranin bisinis me mwan Ranin Utut ren eom kopwe uwanong omwuwe ututun ballot.

### Need Assistance?

You may receive voting assistance from a person of your choice excluding your employer or agent of that employer, agent of your labor union, or a candidate for any office that is listed on the ballot.

### Ka mochen Aninis?

En kopwene kan angei aninisin utut sen emon aramas seni pusin eom finata esapw pachenong eom nenien angang ika chon angang ngeni ena nenien angang, chon angang ngeni eomuwe labor union, ika emon candidate ren ew ekkewe ofes kewe ra kan maaketiw won ewe ballot.

### Contact your County Elections Division:

County of Hawaii

County of Maui

County of Kauai

City and County of Honolulu

### Kori ewe Kinikinin Utut seni ewe County:

County of Hawaii

County of Maui

County of Kauai

City me County of Honolulu

### Go online to:

Confirm your ballot was received

Locate a voter service center or place of deposit

### No ngeni online ren:

Afatan pwe omwuwe ballot ra kan angei

Kuuten ew nenien angangen aninisin chon utut ika nenien uwanong



## English

## Chuukese

Voting in the Primary Election

Utut non ewe Ututun Primary

Step 1

Kinikininin 1

Select ONE political preference

Fini EW finin political

You MUST select ONE political preference below:

En KOPWE finin EW finin political me fan:

Party 1

Party 1

Party 2

Party 2

Party 3

Party 3

Party 4

Party 4

Party 5

Party 5

Nonpartisan Ballot (N)

Ballot ren Ese Wor Ew Ka Fini

Step 2

Kinikininin 2

Vote ONLY for the candidates of your selected political preference

Utut CHOK ren ekkewe candidate seni omwuwe finitan finin political

U. S. Representative

Chon Tupwuni U.S.

State Senate

State Senate

State Representative

Chon Tupwuni State

Vote for Not More Than One (1)

Utut ren Esapw Wate Seni Emon (1)

Candidate 1

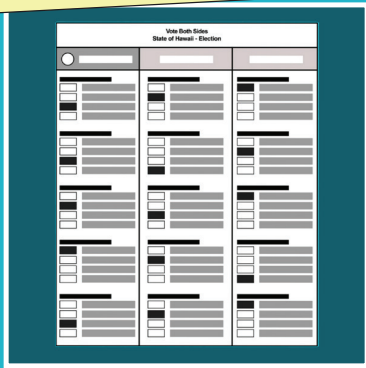
Candidate 1

Hawaii conducts a single party Primary Election to nominate the candidates who will represent each party in the General Election.

Hawaii a fori ew chok ewin Ututun party Primary ren ar repwe finata ekkewe candidate ir repwe wisen tupwuni ew me ew party non ewe Ututun Unusan. Meinin repwe utut non ewe Office of Hawaiian Affairs me County Contests Ka tongeni kuna me nukun ewe ballot.

Everyone may vote in the Office of Hawaiian Affairs and County Contests found on the backside of the ballot.

# Make Your Vote Count



## Mark Your Ballot

Completely fill in the box to the left of your choice with a black or blue pen.

If you vote for more candidates than allowed, your votes for that contest will not be counted.

If you make a mistake, contact your County Elections Division for a replacement ballot. Do not use whiteout.

You will not be issued a replacement ballot once your ballot has been received by your County Elections Division.

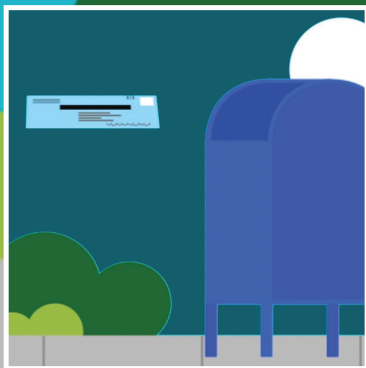


## Seal and Sign Your Return Envelope

Re-fold your ballot and place in the ballot secrecy sleeve. The ballot secrecy sleeve keeps your votes anonymous while being processed for counting.

Place the ballot secrecy sleeve in the return envelope.

SIGN and seal the return envelope. Your ballot will not be counted without your signature.



## Return Your Ballot

The return envelope is pre-addressed and postage-paid.

Your voted ballot must be received by the County Elections Division by 7:00 pm on Election Day, August 10, 2024.

When dropping your ballot in the mail, send it 3 days prior to Election Day to ensure it is received by the deadline.

Alternatively, places of deposit are established 5 business days prior to Election Day to drop off your voted ballot.

## Need Assistance?

You may receive voting assistance from a person of your choice excluding your employer or agent of that employer, agent of your labor union, or a candidate for any office that is listed on the ballot.

## Contact your County Elections Division:

County of Hawaii	(808) 961-8277
County of Maui	(808) 270-7749
County of Kauai	(808) 241-4800
City and County of Honolulu	(808) 768-3800

## Go online to:

- Confirm your ballot was received
- Locate a voter service center or place of deposit

[www.elections.hawaii.gov](http://www.elections.hawaii.gov)

# Voting in the PRIMARY ELECTION

## Step 1

Select ONE political preference

<b>↓ Start voting here</b>	
You <b>MUST</b> select <b>ONE</b> political preference below:	
<input type="checkbox"/>	PARTY 1
<input type="checkbox"/>	PARTY 2
<input type="checkbox"/>	PARTY 3
<input type="checkbox"/>	PARTY 4
<input type="checkbox"/>	PARTY 5
<input type="checkbox"/>	NONPARTISAN BALLOT (N)
Instructions	

Vote **ONLY** for the candidates of your selected political preference

<b>Party 2</b>	
<b>U.S. Representative</b> Vote For Not More Than One (1)	
<input type="checkbox"/>	Candidate 1
<b>State Senate</b> Vote For Not More Than One (1)	
<input type="checkbox"/>	Candidate 1
<b>State Representative</b> Vote For Not More Than One (1)	
<input type="checkbox"/>	Candidate 1

## Step 2

**Hawaii conducts a single party Primary Election to nominate the candidates who will represent each party in the General Election. Everyone may vote in the Office of Hawaiian Affairs and County Contests found on the backside of the ballot.**



# Ballot Seni Facsimile

## (Atetenin Porousen kapasen Ballot seni 2024 me chiaku)

### Facsimile Ballot – Glossary of 2024 Ballot Terms and Translation

Kinikin	English	Chuukese
	Start Voting Here	Poputa utut ikei
	You MUST select ONE political party or nonpartisan ballot below.	En KOPWE fini EW political party ika ese wor eom finngeni ballot me fan
	<b>INSTRUCTIONS</b>	<b>KIN EMWENI</b>
<b>1</b>	You MUST select ONE political preference from the box above for your votes to count.	En KOPWE fini EW finin political seni ewe pwor me asan ren omw utut ar repwe aneani.
<b>2</b>	Vote ONLY for candidates within your selected preference.	Utut CHOK ren candidate me non omwuwe finitan omw fini.
	Votes for another political preference will not be counted.	Utut ren pwan ew finin political esapw pwan aneani.
<b>3</b>	Vote for the Office of Hawaiian Affairs and County contests on the back.	Utut ren ewe Office of Hawaiian Affairs and County asosot fengen me nukun ewe.
	<b>MAKING SELECTIONS</b>	<b>FORUN FINIOM KEWE</b>
	Completely fill in the box to the left of your choice with a black or blue pen. Do not use whiteout.	Oonusano amasowanongen ewe pwor ngeni ewe peniengaw seni finiomwuwe fiti efoch pen mi chon ika araw. Kosapw aa totonun pen.
	Vote for Not More than One (1)	Utut ren Esapw Wate Seni Emon (1)
	Vote for Not More than Three (3)	Utut ren Esapw Wate Seni Unungat (3)
	If you vote for more candidates than allowed in a contest, your votes for that contest will not be counted.	Ika pwe en ka kan utut ren chomong candidates seni mi mumuta non ewe asosot fengen, iwe eom utut ren ewe asosot fengen esapw aneani
	If you make a mistake, request a replacement ballot at <a href="http://hnlvote.ehawaii.gov">hnlvote.ehawaii.gov</a> or call (808) 768-3800. Do not use whiteout.	



Kinikin	English	Chuukese
	<b>GLOSSARY OF 2024 BALLOT TERMS</b>	<b>TETENIN KAPAS REN EWE 2024 BALLOT</b>
	Precinct – The geographic area that is the basis for determining which contests and issues the votes legally residing in that area are eligible to vote on.	Precinct - Ewe eukukun kian fonu ina anongonongen ren asosot ika ekewe sokun osukosukan ekkewe chon utut ra nonom non ewe neni ra mumuta ar repwe utut won.
	Federal Contests – Any primary, general, or special election in which a candidate for Federal office appears on the ballot.	Federal Contests - Ekkena primary, general, ika special utut ina emon candidate ren ofesin Muunap a kan pwano won ewe ballot.
	U. S. Senator	U.S. Senator
	U. S. Representative	Chon Tupwuni U.S.
	State Contests – Contests for members to State Offices, including Governor, Lieutenant Governor, and State Legislative Offices	State Contests - Asosot fengen ren chochon ewe Ofesin State, mi pachonong Kepina, Kisin Kepina, me pwan Ofesin State Legislative.
	Governor	Kepina
	Lieutenant Governor	Kisin Kepina
	State Senator	State Senator
	State Representative	Chon Tupwuni State
	Office of Hawaiian Affairs (OHA) - OHA is a public agency responsible for improving the wellbeing of Native Hawaiians. The agency is governed by a Board of Trustees, made up of nine members who are elected statewide to serve four-year terms and set the organization's policies	Office of Hawaiian Affairs (OHA) - OHA a kan ew ofesin aramas meinisin a kan wisen ren anapano menaweochun pochokunen Chon Hawaii seni nom. Ewe ofes a kan nemenem seni ew Board of Trustee, a kan forita seni niwomen chon non ir ra kan finita seni unusen state ren ar repwe angang ren ruwanu-ier tamen me pwan forata annukun ekewe mwich.
	The agency is governed by a Board of Trustees, made up of nine members who are elected statewide to serve four-year terms and set organization policy	Ewe ofes a kan nemenem seni ew Board of Trustee, a kan forita seni niwomen chon non ir ra kan finita seni unusen state ren ar repwe angang ren ruwanu-ier tamen me pwan forata annukun ekewe mwich.
	Hawaii Resident Trustee	Noun Chon Hawaii Trustee



Kinikin	English	Chuukese
	Maui Resident Trustee	Noun Chon Maui Trustee
	Oahu Resident Trust	Noun Chon Oahu Trustee
	At-Large Trustee (3 seats)	Trustee Seni Unusan (3 sea)
	County Contests – Contests for members to County Offices, including Mayor, Prosecuting Attorney, and City Council District Offices	County Contests - Asosot fengen ren chochon ewe Ofesin County, mi pachonong Mayor, Chon kopungun Sou Annuk, me pwan City Council District Ofes.
	District Councilmember	Chon District Council
	Proposed Amendments to the Honolulu City Charter	Foforitan siwini ngeni ewe Honolulu City Charter
	Proposed Amendments to the Hawaii State Constitution	Foforitan Asiwini ngeni ewe Hawaii State Constitution

**Start Voting Here**

You **MUST** select **ONE** political preference below:

GREEN PARTY (G)

NONPARTISAN BALLOT (N)

CONSTITUTION PARTY (C)

ALOHA AINA PARTY (A)

REPUBLICAN PARTY (R)

LIBERTARIAN PARTY (L)

DEMOCRATIC PARTY (D)

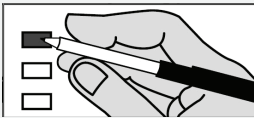
---

**Instructions**

- You **MUST** select **ONE** political preference from the box above for your votes to count.
- Vote **ONLY** for candidates within your selected preference. Votes for another political preference will not be counted.
- You are eligible to vote for **ALL** of the Office of Hawaiian Affairs and County Contests on the back.

---

**Making Selections**



Completely fill in the box to the left of your choice with a black or blue pen.

If you vote for more candidates than allowed in a contest, your votes for that contest will not be counted.

If you make a mistake, request a replacement ballot at [hnlvote.ehawaii.gov](http://hnlvote.ehawaii.gov) or call (808) 768-3800. Do not use whiteout.

**Green Party (G)**

**U.S. Senator**  
Vote For Not More Than One (1)

CANDIDATE A

CANDIDATE B

**U.S. Representative**  
Vote For Not More Than One (1)

CANDIDATE A

CANDIDATE B

**Governor**  
Vote For Not More Than One (1)

CANDIDATE A

CANDIDATE B

**Lieutenant Governor**  
Vote For Not More Than One (1)

CANDIDATE A

CANDIDATE B

**State Senator**  
Vote For Not More Than One (1)

CANDIDATE A

CANDIDATE B

**State Representative**  
Vote For Not More Than One (1)

CANDIDATE A

CANDIDATE B

**Nonpartisan Ballot (N)**

**U.S. Senator**  
Vote For Not More Than One (1)

CANDIDATE A

CANDIDATE B

**U.S. Representative**  
Vote For Not More Than One (1)

CANDIDATE A

CANDIDATE B

**Governor**  
Vote For Not More Than One (1)

CANDIDATE A

CANDIDATE B

**Lieutenant Governor**  
Vote For Not More Than One (1)

CANDIDATE A

CANDIDATE B

**State Senator**  
Vote For Not More Than One (1)

CANDIDATE A

CANDIDATE B

**State Representative**  
Vote For Not More Than One (1)

CANDIDATE A

**Constitution Party (C)**

**U.S. Senator**  
Vote For Not More Than One (1)

CANDIDATE A

CANDIDATE B

**U.S. Representative**  
Vote For Not More Than One (1)

CANDIDATE A

CANDIDATE B

**Governor**  
Vote For Not More Than One (1)

CANDIDATE A

CANDIDATE B

**Lieutenant Governor**  
Vote For Not More Than One (1)

CANDIDATE A

CANDIDATE B

**State Senator**  
Vote For Not More Than One (1)

CANDIDATE A

**State Representative**  
Vote For Not More Than One (1)

CANDIDATE A

**Aloha Aina Party (A)**

**U.S. Senator**  
Vote For Not More Than One (1)

CANDIDATE A

CANDIDATE B

**U.S. Representative**  
Vote For Not More Than One (1)

CANDIDATE A

CANDIDATE B

**Governor**  
Vote For Not More Than One (1)

CANDIDATE A

CANDIDATE B

**Lieutenant Governor**  
Vote For Not More Than One (1)

CANDIDATE A

CANDIDATE B

**State Senator**  
Vote For Not More Than One (1)

CANDIDATE A


**State Representative**  
Vote For Not More Than One (1)

CANDIDATE A




<b>Republican Party (R)</b>
<b>U.S. Senator</b>
Vote For Not More Than One (1)
<input type="checkbox"/> CANDIDATE A
<input type="checkbox"/> CANDIDATE B
<b>U.S. Representative</b>
Vote For Not More Than One (1)
<input type="checkbox"/> CANDIDATE A
<input type="checkbox"/> CANDIDATE B
<b>Governor</b>
Vote For Not More Than One (1)
<input type="checkbox"/> CANDIDATE A
<input type="checkbox"/> CANDIDATE B
<b>Lieutenant Governor</b>
Vote For Not More Than One (1)
<input type="checkbox"/> CANDIDATE A
<input type="checkbox"/> CANDIDATE B
<b>State Senator</b>
Vote For Not More Than One (1)
<input type="checkbox"/> CANDIDATE A
<input type="checkbox"/> CANDIDATE B
<b>State Representative</b>
Vote For Not More Than One (1)
<input type="checkbox"/> CANDIDATE A
<input type="checkbox"/> CANDIDATE B


<b>Democratic Party (D)</b>
<b>U.S. Senator</b>
Vote For Not More Than One (1)
<input type="checkbox"/> CANDIDATE A
<input type="checkbox"/> CANDIDATE B
<b>U.S. Representative</b>
Vote For Not More Than One (1)
<input type="checkbox"/> CANDIDATE A
<input type="checkbox"/> CANDIDATE B
<b>Governor</b>
Vote For Not More Than One (1)
<input type="checkbox"/> CANDIDATE A
<input type="checkbox"/> CANDIDATE B
<b>Lieutenant Governor</b>
Vote For Not More Than One (1)
<input type="checkbox"/> CANDIDATE A
<input type="checkbox"/> CANDIDATE B
<b>State Senator</b>
Vote For Not More Than One (1)
<input type="checkbox"/> CANDIDATE A
<input type="checkbox"/> CANDIDATE B
<b>State Representative</b>
Vote For Not More Than One (1)
<input type="checkbox"/> CANDIDATE A
<input type="checkbox"/> CANDIDATE B

 <b>Office of Hawaiian Affairs</b>
<b>Hawaii Resident Trustee Vacancy</b>
Vote For Not More Than One (1)
<input type="checkbox"/> CANDIDATE A
<input type="checkbox"/> CANDIDATE B
<b>Maui Resident Trustee</b>
Vote For Not More Than One (1)
<input type="checkbox"/> CANDIDATE A
<input type="checkbox"/> CANDIDATE B
<b>Oahu Resident Trustee</b>
Vote For Not More Than One (1)
<input type="checkbox"/> CANDIDATE A
<input type="checkbox"/> CANDIDATE B
<b>At-Large Trustee</b>
Vote For Not More Than Three (3)
<input type="checkbox"/> CANDIDATE A
<input type="checkbox"/> CANDIDATE B
<input type="checkbox"/> CANDIDATE C
<input type="checkbox"/> CANDIDATE D
<input type="checkbox"/> CANDIDATE E

<b>Libertarian Party (L)</b>
<b>U.S. Senator</b>
Vote For Not More Than One (1)
<input type="checkbox"/> CANDIDATE A
<input type="checkbox"/> CANDIDATE B
<b>U.S. Representative</b>
Vote For Not More Than One (1)
<input type="checkbox"/> CANDIDATE A
<input type="checkbox"/> CANDIDATE B
<b>Governor</b>
Vote For Not More Than One (1)
<input type="checkbox"/> CANDIDATE A
<input type="checkbox"/> CANDIDATE B
<b>Lieutenant Governor</b>
Vote For Not More Than One (1)
<input type="checkbox"/> CANDIDATE A
<input type="checkbox"/> CANDIDATE B
<b>State Senator</b>
Vote For Not More Than One (1)
<input type="checkbox"/> CANDIDATE A
<b>State Representative</b>
Vote For Not More Than One (1)
<input type="checkbox"/> CANDIDATE A

 <b>County Contests</b>
<b>City and County of Honolulu</b>
<b>Councilmember</b>
Vote For Not More Than One (1)
<input type="checkbox"/> CANDIDATE A
<input type="checkbox"/> CANDIDATE B

## MARK • MAIL • MATTER

 If you do not sign, your ballot will not be counted!

 Must be received by **7p.m. Election Day** to be counted.  
Affix foreign air mail postage if mailed from a foreign postal facility.



1-987654 9123456 Dist-Prec: 40-04 P BTC: 518  
1234 ALOHA LN



## AFFIRMATION STATEMENT

In signing, I affirm: I am a resident and registered voter of the precinct and representative district as indicated on the left and have voted this ballot without the personal assistance of my employer, union agent, or any candidate.

## SIGN IN BOX

JOE A. VOTER

A witness must sign below only if a voter uses a mark as a signature.  
Power of attorney is NOT acceptable.

\_\_\_\_\_  
Witness Signature

\_\_\_\_\_  
Address/Phone

JOE A. VOTER  
PO BOX 9999  
HONOLULU, HI 96813



## Eniwiniton Ballot (Nampa 10) Envelop Porous

Ika pwe kose kan sainei, iwe eomuwe ballot esapw anea!

Epwe kan angei me mwan 7 nepwin Ranin Utut ren an epwe anea.

Apechanong posto seni sepenin seni ew fonuen nukun ika pwe a ka titito seni posto seni ew nenien posto seni ew fonu me nukun.

Ka mochen echo siwinin ballot? Tota won [www.honoluluelections.us](http://www.honoluluelections.us) ika kori ach ewe ofes non 808-768-3800.

### AFFIRMATION STATEMENT

Non sainin, Ngang uwa afatano: Ngang emon chon me pwan register chon wutut seni ewe precinct me pwan tipwenin district usun a asisinita won ewe peniengawen me pwan uwa wututu ei ballot nge ese wor aninisin inisi seni nenien ai angang, chon angang ngeni nenien ai angang, chon angang ngeni ai we labor union, ika ekkena candidate ra maketiwi won ewe ballot.

### Sainei Non Pwor

Emon chon kuna epwe kan sain me fan ika chok pwe ewe chon utut a kan aa ew maak pwe ewe sainin. Pochokun seni Sou Annuk ESE ketiw.

Sainin Chon Kuna

Address/Fon