



# **Honolulu Kempahn Usuhs Pohnpeian Kaweid ohng Kawehwe**

Division lun Honolulu

## **Pohnpeian Language Kit**



# Irekdi en Pwuhke

Table of Contents

## Ire Kan Pid lang Usuhs

Voter Information Brochure

## 2024 Mengihtik Pen Soun Usuhs

2024 Election Voter Information

## Soun Usuhs Doaropwehn Kileledi ohng Usuhs (Kaweid ohng Kawehwe)

Voter Registration Application Form (Translation Guide)

## Hawaii Doaropwehn Apsentih Aplikeisin (Kaweid ohng Kawehwe)

Hawaii Absentee Application Form (Translation Guide)

## Aplikeisin ohng Towehda Usuhs (Kaweid ohng Kawehwe)

Application for In-Person Ballot (Translation Guide)

## Soun Usuhs Wasahn Sahpis en Kalelapak

Voter Service Center FAQ

## Kaweidpen Usuhs (Kaweid ohng Kawehwe)

Voting Instructions (Translation Guide)

## Doaropwehn Usuhs Me Kilel Pekeder

## (Irekidi en Lepin Lokaia en Doaropwehn Usuhs en 2024 oh kawehwe)

Facsimile Ballot (Glossary of 2024 Ballot terms and translation)

## #10 Enpelop

#10 Envelope

# Ia Mwomwen Emen Kak Iang Tuhwehda Usuhs

Nan internet ni [www.olvr.hawaii.gov](http://www.olvr.hawaii.gov)

**Ni kisin likou de iang ni:**

Elections Division  
Office of the City Clerk  
530 S. King St, Room 100  
Honolulu, HI 96813

**Alehdsang internet ahmw doaropwe:**

[www.honoluluelections.us](http://www.honoluluelections.us)

**De alehda ehu ni:**

- City Hall Koaros
- Pwohso en United States Kan
- Ohpihs en Laisin en Dake Sidohsa
- Pali laud en Kempwa en State en Hawaii kan
- Laipreri Kan
- Kisin pwuhk en daksis en State en Hawaii
- Hawaiian Telcom Yellow Pages

---

**Ni ahmw kanekeha ahmw  
iang tuhwehda usuhs,  
komw pahn ale doaropwe  
en usuhs. Sohte wasahn  
usuhs nan pahr wet!**

---



**Peki reht:**

(808) 768-3800  
[www.honoluluelections.us](http://www.honoluluelections.us)  
City & County of Honolulu  
Office of the City Clerk, Elections Division  
530 S King St, 100  
Honolulu, HI 96813

**Idawehn kiht nan social media pwehn ale  
rong kapw kan!**



Twitter  
[@HNLelections](https://twitter.com/HNLelections)



[@HNLelections](https://www.facebook.com/HNLelections)



[@HNLelections](https://www.instagram.com/HNLelections)



MARK • MAIL • MATTER

Paid for by the taxpayers of the City and County of Honolulu



**City & County en Honolulu  
Ohpihs en City Clerk  
Pwihn en Usuhs Kan**

# IRE KAN PID IANG USUHS

## Ihs Me Kak lang Usuhs

- **Tohnsapw en United States**

Aramas me sohte tohnsapw en United States, iangahki U.S. Nationals, sohte kak iang

- **Sounpar 16 de laud sang**

(Emen anahne sounpar 18 de laud sang pwehn usuhs)

- **Emen me kin mihmi nan State en Hawaii**

Met wehwehki me komw kin mihmi nan Hawaii laud sang wasa koaros oh ale pwukoa kan koaros me iangahki.

### **Ni ahmw kanekehla ahmw iang tuhwehda usuhs, komw pahn ale doaropwe en usuhs.**

#### **Sohte wasahn usuhs nan pahr wet!**

Pwehn esehda pid ahmw iang tuhwehda usuhs, kilang [www.ohvr.hawaii.gov](http://www.ohvr.hawaii.gov) ni ahmw laisin en dake sidohsa nan State en Hawaii/Hawaii State ID, de kahlih aht ohpihs.

### **Iang usuhs ni ahmw kin mihmi sahpw tohrohr**

Ma komw sohte pahn mih ni imwomwi oh anahne pile hu doaropwe en usuhs en kdarawei ni wasa me komw mih la ie, kanekehla doaropwe en Absentee Application.

### **Rahn me emen anahne iang tuhwehda usuhs**

Ohpihs en Clerk anahne ale doaropwe en iang tuhwehda usuhs kan rahn keisek mwohn usuhs kahlap, oaralap, de tohrohr.

### **Kapowihala lang Tuhwehda Usuhs**

Kilang aht website de kahlih aht ohpihs pwehn ale sawas.

## Padahk En Iang Usuhs Kan

Apwalih mwahu en wadek doaropwe en ushus.

Sainih empelop pwehn kaselehda me pein komwi me iang usuhs nan doaropweol. Ahme doaropwe en usuhs SOHTE pahn wadawad ma komw sohte sainih empelop wet.

Ahniki pilahn en kadaralangkiht ahmw doaropwe en usuhs.

Doaropwe kan me se ale **mwurin 7:00 ni mwurin**

**sawas** nan rahn en Usuhs sohte pahn wadawad. Lipwen pwohso SOHTE kahrehda re pahn wadawad.

### **Kadarala ahmw doaropwe en usuhs:**

- Ni wasahn nekid kan
- Ni wasahn sawas ong irail me iang tuhwehda usuhs
- Ni kisin likou – Sohte anahne pwainda!  
Ma komw kadarala ahmw doaropwe ekei rahn mwohn rahn en usuhs, mwein komw pahn mwahuki rong pid ansou kan me USPS pahn kadarala.
- Pwehn esehda ia wasa komw kak kihda ahmw doaropwe en usuhs karanih imwomwi, kilang aht website de kahlih aht ohpihs.

### **Doaropwe Wiliiepe**

Kilang aht website de kahlih aht ohpihs pwehn a le sawas.

## Wasahn Sawas Ong Irail Me Iang Tuhwehda Usuhs

- Sawas en usuhs pid me pakolong kan
- Sawas en usuhs
- Iang tuhwehda oh usuhs mwurin rahn en iang tuhwehda usuhs
- Ale doaropwe en usuhs wiliiepe ieu

Ritingada rahn en pesnes rahn 10 mwohn

Rahn en Usuhs

Niehd – Rahn Kaunop

8:00 ni menseng – 4:30 ni mwurin sawas

Rahn en Usuhs

7:00 ni manseng – 7:00 ni mwurin sawas

### **Honolulu Hale**

530 S King St.

Honolulu, HI 96813

### **Kapolei Hale**

1000 Uluohia St.

Kapolei, HI 96707



MARK • MAIL • MATTER



## **Mengihtik pen Soun Usuhs nan Lopidi en Honolulu**

### **Usuhs en Primary**

Rahn Kaunop, Ahkos 10, 2024

### **Usuhs en General**

Ni Are, Nopempe 5, 2024

---

### **Ekei Rahn Kesemwpwal:**

#### **Soun Usuhs Rahn en Kileledi**

Usuhs en Primary - Ni Esil, Sulai 31, 2024

Usuhs en General - Ni Ehd, Oakotope 28, 2024

\* Komw kak kileledi ansou koaros doadoahngki mehn Kileledi en Soun Usuhs nan Internet (Online Voter Registration System) de kohla Wasahn Sahpis ohng Soun Usuhs.

### **Wasahn Sahpis ohng Soun Usuh Wasa oh Rahn Akan**

Komw kilang irekidi me mihmi ni imwin doaropweht.

### **Wasahn Pwilidie oh Rahn Akan**

Komw kilang irekidi me mihmi ni imwin doaropweht.

#### **Kileledi nan Internet**

Hawaiii State Driver License de Hawaii State ID pahn anahn pwehn iang doadoahk ohng kileledi nan Internet. Doadoahngki link pah pwehn alehdi Wein Hawaii Ohpis en Wasahn Usuhs ohng Kileledi en Soun Usuhs nan Internet. [Doahgoahngki Internet oh Kileledi Soun Usuhs](#)



## Kamengeidahn mwomwehn kileledi meh 3

### 1) Kileledi nan Internet

Ohpis en Usuhs en Wehi Kileledi en Soun Isuhs nan Internet kamengeidah nan Ohpis en Usuhs nan Internet. Doahgoahngki Internet oh Kileledi Soun Usuhs

Hawaii State Driver License de Hawaii State ID pahn anahn pwehn iang doadoahngki kileledi en soun nan Internet. Koaros soun usuhs me kileledi oh pekipek en usuhs en apsentih pahn pwahki koasoandi en lahs en rahn.

### 2) Kihsang nan Internet Doaropwehn Aplikeisen

Kihsang nan Internet aplikeisen, ni doaropwe pwehn pekeder, wasah: Link en Doaropwehn Aplikeisin

Kadar doaropweh me audaudahr mah id edin amw pahn kileledi ohng usuhs de mah ke wekid ahmw adires de welian edemw.

### 3) lawasa ke Pahn Pwekada Doaropwehn Aplikeisen

Doaropwehn aplikeisen kak dierek ni wasah ka:

- Palien Ohpis en Kousapw Kan (Palien Ohpis en Kousapw Link Kan)
- Post Ohpis en United States
- Wasahn wiada laisen en diraip kan (kileledi en soun usuhs te)
- Pali laud en Wein Hawaii ohpis en koapworoment kan (kileledi en soun usuhs te)
- Wasahn Laibirehri
- Pwuhk en daksis en Wein Hawaii
- Doaropwe Oahngoahn en Hawaii Telecom (kileledi en soun usuhs te, mwurin Wasahn Kaweid en Onopada ohng Kahpwal)

Likin wasahn wiada laisen en diraip (me kin kapataiehng kileledi en soun usuhs ansoun wiada aplikeisen en drive), wasah kei me mih poweh sohte pahn alehda doaropwehn aplikeisen me nekier.

Menlau kadar doaropwe me nekier ohng Ohpis en Kilerk en Wehi Kempahn Usuhs:

Elections Division  
Office of the City Clerk  
530 S. King St, 100  
Honolulu, Hawaii 96813



## Kaweid ohng Usush oh Ire Teikan

Koaros soun usuhs, me kileledier ni lahs en rahn en kileledi, pahn alehdi ehu doaropwehn usuhs nan posto.

### Usuhs Nan Posto

Soun usuhs men pahn alehdi nan posto doaropwehn usuhs me pahn iangahki:

- Doaropwehn usuhs;
- Mehn nekinek rir de enpelop (oangoahng);
- Enpelop en Kapwure Doaropwehn Usuhs; oh
- Soangen kaweid ohng usuhs teikan

### Kaweid ohng Usuhs Nan Posto

1. Kilang pali koaros doaropwehn usuhso oh doaropwehn kaweid koaros me iang. Kilelehdi ahpw pilipil mahs nan ehu doaropwe tohrohr.
2. Usuhs ni ahmw pahn koatoantoalehla wasahn usuhs me pelian me ke pilada oh doadoahngki pehn poh toantoal de mei.
3. Kieng ahmw usuhso nan mehn nekinek ni rir de enpelop oangoahng oh katengehdi enpelop.
4. Kieng mehn nekinek ni rir de enpelop nan Enpelop en Doaropwehn Usuhs (ohng pasapeng en pesines). Mah ke alehdi kaweid me ken kihda ehu koapi en doaropwehn kapehse iangahki noumw doaropwehn usuhs, kapataieng okapi en doaropwehn kapehse. Katengehdi enpelop.
5. SAIN doaropwehn pwungkihla pohn Enpelop en Doaropwehn Usuhs Me Pahn Kapwurpwurla. Noumw doaropwehn usuhs SOHTE pahn iang wadawad mah doaropwehn pwunkihla sohte sain.

6. Kadar enpelop ansou karwaru pwehn kak alahldi sohte pwandasang kuloak 7:00 nin soutik Rahn en Usuhso. Sang ni kosonned en wei, usuhs iou me alahldi mwurin kuloak 7:00 nin soutik en Rahn en Usuhso sohte pahn iang wadawad.

### Usuhs en Posto me Ohla

Sapwung kak oh kin wiawi. Menlau ke deh doadoahngki mehn ireis me teip de pihl, de wia inting mehn kapwungala sapwung nan noumw doaropwehn usuhso. Mah ke sapwungala, eker aht ohpis pwehn welialihda doaropwehn usuhs. Mah konehng wiawi (pwehki ansou, de soahng teikan) nait tohn doadoahk pahn kaweidada mekot pwe ken kak wia ahmw usuhs. Ahpw, ken wehweki pwehki ansou de mehkot, kaweido kak wiawi ni mwomhw me kepahn pein kohla ale weliepen doaropwehn usuhso de kakete usuhs ni Wasahn Sahpis ohng Soun Usuhs.

### Usuhs en Apsentih (ansou ke sohte mih nihmwomw)

Aplikeisen en “Wen Ansou” Pak-Ehute - Doahdoahngki applikeisen wet mah ke sohte pahn mih nihmwomw ansoun usuhs. Noumw doaropwehn usuhs pahn pekeder nan posto ohng adires me ke kihda.

Link ohng Aplikeisen en Wen Ansou

### Wasahn Sawas ohng Soun Usuhs

Erein rahn en pesines eisek (10) mwohn oh iangahki Rahn en Usuhs, soun usuhs kak wia arail usuhs ni Wasahn Sahpis ohng Soun Usuhs. Nan doken ansouet, aramas emen me sohte kileledi ohng usuhs kak kilelede en usuhs oh iang usuhs. Kilang irekidi en Wasahn Sahpis ohng Soun Usuhs oh rahn me mie. Mwomwen Rahn en Usuhs me kitial kin wia rahnteio sohte pahn wiawi



Koaros soun usuhs me kileledi ohng usuhs nan Kousapw oh Wein Honolulu kak usuhs wasa koaros, sohte lipilipil mehnia lopidi e iang.

Pwehn sewese doadoahk en usuhs, menlau taman wahdong noumw doaropwehn kapehse ihs kowe ohng Wasahn Sawas ohng Soun Usuhs.

Soangen doaropwehn kapehse me kak doadoahk iei:

- Diraipei laisen en Wehi;
- Doaropwehn kapehse sang Wehi;
- Doaropwehn kapehse en Sounpei en U.S.;
- Noumw pahsport; de
- Ehu risiht en pwain lioal, ehu doaropwe sang bank, doaropwe sang koapworoment, de ehu noumw peidei me mie edem oh amw address en met.

Ansou ke pahn lella ni Wasahn Sawas ohng Soun Usuhs, se pahn kaweid uhk ohng kanekehla doaropwehn kileledi mah mie anahnepe.

Mah sohte noumw doaropwehn kapehse, sepahn peki soangen doaropwe teikan pwehn kak kapehse ihs kowe. Doadoahk wet pahn pil karairaiala ansou.

### **Wasahn Pwilidie**

Soun Usuhs kak wahla neirial doaropwehn usuhs nan koakon en usuhs wasahkan me pahn ritida ni rahno de ni rahn eisek waluh mwowe, ahpw sohte pwandasang 7:00 ni soutike en Rahn en Usushs. Kilang irekdi en Wasahn Pwilidie.

### **Me Pidada Usuhs**

Sang ni ruwes en Koasonned en Hawaii §11-132, nan iren piht riepwiki sang wasahn sawas en soun usuhs, wasahn pwilidi, oh wasahn sawas teikan, sohte mweimwei kilel de nehnepeseng en doaropwehn kampein, sain, de songen dipwisou en kampein pwehn nahkada soun usuhs me uhong de pwungki emen aramas de irehkan nan doaropwehn usuhs.

### **Kamengei ohng Soun Usuhs**

Wasahn Sawas ohng Soun Usuhs mengei ohng aramas me anahn tohrohr ohng kohla de songen doadoahk teikan. Wasahn Sawas ohng Soun Usuhs kin kihda soangen dipwisou en kamengei pwehn sewese soun usuhs me mie anahn tohror ren kak pein usuhs. Emen soun usuhs me pahn anahne sawas en usuhs pwehki anahn tohrohr en paliwar, mese, salenge, de sohte kak wadawad de inting kak ale sawas sang emen me soun ususho pahn pilada – palahsang en soun usuhs ah kaun en doadoahk, de emen sang wasahn doadoahk, de sang pwihn me soun ususho iang (42 U.S.C 1973aa-6). Ohpis en Kilerk en Wehi, TTY – 808-768-3848 (Sohte me pahn kin sapeng)





## **Pakair oh Kapwowihala ohng Soun Usuhs**

### **Pakair ohng Soun Usuhs**

Mah ke iangeh kileledi ohng usuhs, ke pahn alehdi kisin likou en Pakair en Kileledi en Soun Usuhs me poh oangoahng nan sounpwong en April en sounpar en usuhs. Kisin likou en pakair pahn pekeder nan posto ohng me ahpwte kileledi oh me pwurehng kileledi nan ilepen sounapar en usuhs.

### **Kapwowihala Kileledi en Soun Usuhs**

Mah ke solahr men wia soun usuhs me kileledi, ke kak pein kapwowihala noumw kileledi en soun usuhs. Ke kak pil kapwowihala nein peneinei me melahr neirail kileledi en soun usuhs. Doaropwehn kapwowihala kileledi kak kohla ni Ohpis en Kilerk en Wehi. Se kalahnganki mengihtik kan me kin sewesei kiht wia doadoahk en kapwkapwung mehn kileledi en soun usuhs. Link en Kapwowihala Kileledi en Soun Usuhs



## Kalelapak me Kalapw Wiawi

### Kalelapak me Kalap Wiawi – Kapwurehla Doaropwehn Usuhs Me Intingehr

**Q: lahd lahs en rahn me I kak kapwurehla nei doaropwehn usuhs me intingehr?**

**A:** Kosonned en Wehi ruwese me doaropwehn usuhs me intingehr pahn alahldi kuloak 7:00 ni soutik ni kuloak en Hawaii (Hawaii Standard Time) ni Rahn en Usuhs pwehn kak iang wadawad.

**Q: la soangen wiepeh kan me I kak wia pwehn kapwurehla nei doaropwehn usuhs nan posto?**

**A:** Ke kak wahla noumw doaropwehn usuhs me intingehr ni Wasahn Sawas ohng Soun Usuhs de Wasahn Pwilidi mah epahn alahldi ni rahn me koasondier poweh.

**Q: la mwomwen ahi pahn kapwungala sapwung nan nei doaropwehn usuhs de nei enpelop me iaphn kapwure?**

**A:** Menlau eker aht ohpis ni 808-768-3800 ohng kaweid.

### Kalelapak me Kalapw Wiawi – Kileledi ohng Soun Usuhs

**Q: I anahne kileledi pwe ien iang usuhs?**

**A:** Ehng. Kileledi ohng usuhs udahn anahnpe ohng soun usuhs kapw.

**Q: lahd I anahne pwurehng kileledi ohng usuhs?**

**A:** Ke anahne pwurehng kileledi mah ahmw wasahn kouson de posto adires wekila, de mah ke wekidala edemw.

**Q: lahd lahs en kileledi ohng usuhs?**

**A:** Ke kak kileledi ohng usuhs lel 10 en rahn mwohn usuhs. Doaropwehn kileledi ohng soun usuhs anahne mie kilelen posto de alahldi mwohn rahn me koasondi.

**Q: Dahme anahn ohng kileledi en usuhs?**

**A:** Me pah kileledi anahn iang towe mehleh en wein U.S, kin kousoan Hawaii, oh sounpar 16 (mwohn kileledi).

**Q: la mwomwen ahi pahn esehda mah I iang kileledi eng usuhs?**

**A:** Pakair ohng Soun Usuhs oh Doaropwehn Kamehelele Wasahn Kousoan (doaropwe oangoahng) pahn pekeder nan posto nan April en sounpar en usuhs. Ke iangeh kileledi ohng usuhs mah ke pahn aledier doaropwe wet. Ke kak pil eker Kempahn Usuhs ni 808-768-3800 pwehn kamehlelda.

**Q: Adires en wasahn kousoan anahne ohng kileledi en soun usuhs? laduwe mah sohte ahi adires?**

**A:** Mah sohte amw adires en wasahn kousoan, kaweidpen wasahn kousoan udahn ananepe. Met pahn kaweidada soun wia usuhs kan en kak kieng uhk ahmw lopidi en usuhs.

**Q: I pahn kak usuhs mah I iangeh dipada me toutou?**

**A:** Soun usuhs men me selkhdier dihpe me toutou, sang ansoun selidi oh lau lel rahn me epidohi, sohte kak iang usuhs. Ahpw, mah aramas emen parohl mwurin selidi, aramaso kak iang kileledi oh usuhs ansou me e parohl.



### **Kalelapak Kalapw Wiawi – Usuhs en Apsentih**

**Q: *laduwe mah I sohte mie ansoun usuhs?***

**A:** Doadoahngki Aplikeisen en “Wen Ansou” mah kepahn sohte mie nimwomw ansoun usuhs. Noumw kisin likou en usuhs pahn pekeder nan posto ohng adires me ke sawaskihda.

**Q: *I pahn anahne peki kisin likou en apsentih ni usuhs koaros?***

**A:** Ke kak peki kisin likou en apsentih, pekeder nan posto ohng adires tohror mah mie anahnepe, ohng usuhs en Primary oh General ansou ohte.



## **Mengihtik en Lokaiahng Kempahn Usuhs en Honolulu**

Kempahn Usuhs en Honolulu mihmi:

Honolulu Hale, City Hall  
Office of the City Clerk  
530 S. King St, 100  
Honolulu, Hawaii 96813

Awahn Ohpis: 7:45 ni menseng lel 4:30 mwurin souwas Ni Ehd-Ni Alem, Holiday sohte iang.

Nein Kempahn Usuhs en Honolulu Delepwohn: (808) 768-3800

Kempahn Usuhs en Honolulu TTY (ohng me mie anahn tohror ohng rong de lokaia):  
(808) 768-3848



## Irekdi en Wasahn Sawas ohng Soun Usuhs

### Awah Doadoahk

### Wasahkan

#### Usuhs en Primary

Sulai 29, 2024 lel Ahkos 9, 2024

Ni Ehd lel Rahn Kaunop

8:00 ni manseng lel 4:30 mwurin souwas

Ahkos 10, 2024

7:00 ni manseng lel 7:00 mwurin souwas

#### Usuhs en General

Oakotope 22, 2024 lel Nopempe 4, 2024

Ni Ehd lel Rahn Kaunop

8:00 ni manseng lel 4:30 mwurin souwas

Nopempe 5, 2024

7:00 ni manseng lel 7:00 mwurin souwas

Honolulu Hale Courtyard

530 South King Street

Honolulu, HI 96813

Kapolei Hale Conference Rooms

1000 Uluohia Street

Kapolei, HI 96707

#### Usuhs en Primary

Sulai 29, 2024 lel Ahkos 2, 2024

Ni Ehd lel Ni Ale

11:00 ni menseng lel 6:30 ni soutik

#### Usuhs en General

Oakotope 22, 2024 lel Oakotope 26, 2024

Ni Are lel Rahn Kaunop

11:00 ni menseng lel 6:30 ni soutik

Kaneohe District Park (Meeting Room)

45-660 Keaahala Road

Kaneohe, HI 96744

#### Usuhs en Primary

Ahkos 5, 2024 lel Ahkos 9, 2024

Ni Ehd lel Ni Ale

11:00 ni menseng lel 6:30 ni soutik

#### Usuhs en General

Oakotope 29, 2024 lel Nopempe 2, 2024

Ni Are lel Rahn Kaunop

11:00 ni menseng lel 6:30 ni soutik

George Fred Wright Wahiawa District Park

(Ceramic Room)

1129 Kilani Avenue

Wahiawa, HI 96786



## Irekdi en Wasahn Pwilidi

### Awah Doadoahk

#### Usuhs en Primary

Ritida rahn koaros ni Sulai 23, 2024 lel 7:00 ni soutik en Ahkos 10, 2024

#### Usuhs en General

Ridia rahn koaros oh idawih awahn doadoahk sang Oakotope 18, 2024 lel 7:00 ni soutik en Nopempe 5, 2024

### Wasahkan

Waianae District Park  
85-601 Farrington Highway  
Waianae, HI 96792

Asing Community Park  
91-1450 Renton Road  
Ewa Beach, HI 96706

Bill Balfour Jr. Waipahu  
District Park  
94-230 Paiwa Street  
Waipahu, HI 96797

Mililani Park and Ride  
95-1101 Ukuwai Street  
Mililani, HI 96789

Neal Blaisdell Park  
98-319 Kamehameha  
Highway  
Aiea, HI 96701

Connie Chun Aliamanu  
Neighborhood Park  
4259 Lawehana Street  
Honolulu, HI 96818

Kalihi Valley District Park  
1911 Kamehameha IV Road  
Honolulu, HI 96819

Sunset Beach  
Recreation Center  
59-540 Kamehameha  
Highway  
Haleiwa, HI 96712

Kaneohe District Park  
45-660 Keaahala Road  
Kaneohe, HI 96744

Kailua District Park  
21 South Kainalu Drive  
Kailua, HI 96734

Hawaii Kai Park and Ride  
240 Keahole Street  
Honolulu, HI 96825

Waialae Iki  
Neighborhood Park  
4888 Analii Street  
Honolulu, HI 96821

Kanewai Community Park  
2695 Dole Street  
Honolulu, HI 96822



## Irekdi en Wasahn Pwilidi (kohkolate)

### Awah Doadoahk

### Wasahkan

#### Usuhs en Primary

Ritida rahn koaros ni Sulai 23, 2024 lel 7:00 ni soutik en Ahkos 10, 2024

Honolulu Hale  
530 South King Street  
Honolulu, HI 96813

#### Usuhs en General

Ridia rahn koaros oh idawih awahn doadoahk sang Oakotope 18, 2024 lel 7:00 ni soutik en Nopempe 5, 2024

Kapolei Hale  
1000 Uluohia Street  
Kapolei, HI 96707



## Soun Usuhs Doaropwehn Kileledi ohng Usuhs (Kaweid ohng Kawehwe)

### English

### Pohnpeian

Registration online at [elections.hawaii.gov](https://elections.hawaii.gov)

Kileledi nan Internet ni [elections.hawaii.gov](https://elections.hawaii.gov)

Do you meet these qualifications:

Mieier me ke anahne:

Are you a citizen of the United States of America?

Ke wia towe mehleh en United States en America?

Are you at least 16 years of age? (Must be 18 to vote)

Ke sounpareh 16? (Anahne sounpar 18 pwehn usuhs)

**1**

Are you a resident of the State of Hawaii?

Ke kin soukousoan nan Wein Hawaii?

If you answered “No” to any of the above, DO NOT complete the form.

Mah ke sapeng “Soh” ohng ehu mehn poweh, KEDEH audehda doaropweh.

The residence stated in this affidavit is not simply because of my presence in the State, but was acquired with the intent to make Hawaii my legal residence with all the accompanying obligations therein.

Tohn kousoan me mih nan doaropweh kaidehn pwehki ahi mihmi nan Wehi, ahpw I wia tohn kousoan pwe ien wiala towe mehleh en Hawaii ehu rahn iangahki pwukoa me kin iang.

**2**

Last Name

Ahmw Las Neim

First Name

Tepin Edemw

Middle Initial (M.I.)

Mesen Inting (M.I.)

Suffix (Jr, II)

Ahd Mwuri (Jr, II)

**3**

HI Driver License or HI State ID Number (if you do not have either, complete box 3b)

Diriper Laisen en HI de Nempehn Doaropwehn Kapsehse ohng Wein HI (mah sohte noumw soahng ka koaros, wiada koakon 3b)

**3B**

I do not have a HI Driver License, HI State ID, or SSN

Sohte nei Diraiper Laisen en HI, Doaropwehn Kapsehse ohng Wein HI, de SSN

**4**

Date of Birth

Rahn en Ipwidi

Phone Number

Nempehn Delepwohn

Email

Email





## English

## Pohnpeian

**5**

If you are disabled and unable to read standard print, would you like to receive an electronic ballot?

Yes, I am disabled and unable to read standard print and would like to request an electronic ballot to be sent to my email indicated on this application

Applicant must provide an email address to receive an electronic ballot.

Mah komw ahniki anahn tohrohr oh sohte kak wadek mesen inting, ke mwahuki ale ehu doaropwehn usuhs nan kompuhter?

Ehng, I ahniki anahn tohrohr oh sohte kak wadek mesen inting oh men peki ehu doaropwehn usuhs nan kompuhter en pekederla nan nei email me mih nan aplikeisin wet.

Soun apilai anahne kihda adires en email pwehn kak alehdi doaropwehn usuhs nan kompuhter.

**6**

Residence Address (P.O. Box, R.R., S.R., are not acceptable)

Mailing Address in Hawaii

Same as Residence Address

Apt. Number

City

Zip Code

If your residence does not have a street address, describe the location (cross streets, landmarks).

Adires en Kousoan (P.O. Box, R.R., S.R., koaros sohte kak alahlda)

Adires en posto nan Hawaii

Duwehte Adires en Kousoan

Nhmw Nempe

Kousapw

Zip Code

Mah ahmw wasahn kousoan sohte aniki adires en nan ahl, kosoiahda wasahu (mehnia ahl, soahngen wasah kan me karanih).

**7**

Are you registered to vote in another state?

Yes, I hereby authorize cancellation of my previous registration at the following address, county, state, and zip code.

Ke kileledier ohng usuhs nan ehu wehi?

Ehng, met I kamanadah oh kapwouihala nei kileledi en rahnteio ni adires, lopidi, wei, oh zip code.



## English

## Pohnpeian

8

Warning: Any person who knowingly furnishes false information may be guilty of a Class C felony.

I hereby swear (or affirm) that all information furnished on this application is true and correct.

If you are unable to sign, mark the signature line and have a witness provide their signature, address and phone number.

Sign Here

Date

Office Use Only

ID Number

Location Code

Document Number

Notice: The identity of the voter registration agency through which any voter was registered shall not be publicly disclosed. A person's declination to register to vote is also confidential and is used for voter registration purposes only (National Voter Registration Act of 1993).

Mehn Kapehse: Emen aramas me pahn kihda mengitik meh ese me sapwung kak wiada dih p me toutou en Class C.

I kaukihla (de kamehlele) me soahng koaros mei kihda nan aplikeisin mehlel oh pwung.

Mah ke sohte kak sain, kiengte lipwen inting pohn wasahn sain oh emen soun kadehde en kihda sain, adires, oh nempehn delepwohn.

Sain Wasaht

Rahn

Ohng Ohpis Te

Nempehn ID

Kou den Wasa

Nempehn Doaropwe

Pakair: Wasa me soun usuhs kileledi ie sohte pahn langada ohng wei pokon. An aramas emen ah kahng iang kileledi en usuhs pil sohte pahn langada oh kin doadoahkong kileledi en soun usuhs te (National Voter Registration Act of 1993).

# Hawaii Voter Registration Application

Please print clearly in black ink.

Register online at [elections.hawaii.gov](https://elections.hawaii.gov)

**1** **Do you meet these qualifications:**

Are you a citizen of the United States of America?	<input type="checkbox"/> Yes	<input type="checkbox"/> No
Are you at least 16 years of age? (Must be 18 to vote)	<input type="checkbox"/> Yes	<input type="checkbox"/> No
Are you a resident of the State of Hawaii?	<input type="checkbox"/> Yes	<input type="checkbox"/> No

**If you answered "No" to any of the above, DO NOT complete this form.**

**The residence stated in this affidavit is not simply because of my presence in the State, but was acquired with the intent to make Hawaii my legal residence with all the accompanying obligations therein.**

**2**

Last Name	First Name	M.I.	Suffix (Jr., II)
-----------	------------	------	------------------

**3** HI Driver License or HI State ID Number  
**If you do not have either, complete box 3b.**

**3b**

<input type="checkbox"/> I do not have a HI Driver License or HI State ID Provide the last 4 digits of your Social Security Number.	<input type="text"/>	<input type="text"/>	<input type="text"/>	<input type="text"/>
<input type="checkbox"/> I do not have a HI Driver License, HI State ID, or SSN				

**4**

Date of Birth	Phone Number	Email
---------------	--------------	-------

**5** If you are disabled and unable to read standard print, would you like to receive an electronic ballot?

Yes. I am disabled and unable to read standard print and would like to request an electronic ballot be sent to my email indicated on this application. **Applicant must provide an email address to receive an electronic ballot.**

**6**

Residence Address (P.O. Box, R.R., S.R., are <u>not</u> acceptable)	Apt. Number	City	Zip Code
Mailing Address in Hawaii <input type="checkbox"/> Same as Residence Address	Apt. Number	City	Zip Code

**If your residence does not have a street address, describe the location (cross streets, landmarks).**

**7** **Are you registered to vote in another state?**  Yes. I hereby authorize cancellation of my previous registration at the following address, county, state, and zip code.

**Warning: Any person who knowingly furnishes false information may be guilty of a Class C felony.**  
I hereby swear (or affirm) that all information furnished on this application is true and correct.

**8**

**SIGN HERE** ▶

<div style="border: 1px solid black; height: 80px; width: 100%;"></div>	Date
---	------

**If you are unable to sign, mark the signature line and have a witness provide their signature, address, and phone number.**

<b>OFFICE USE ONLY</b>	ID Number	Location Code <b>CC22</b>	Document Number	
------------------------	-----------	------------------------------	-----------------	---

**Notice:** The identity of the voter registration agency through which any voter was registered shall not be publicly disclosed. A person's declination to register to vote is also confidential and is used for voter registration purposes only (National Voter Registration Act of 1993).



## Hawaii Votes by Mail

All registered voters will be automatically sent a ballot to their mailing address in Hawaii associated with their voter registration.

## First time Voter Mailing this Application

If you are registering to vote for the first time in the State of Hawaii, mailing this application, and do not have a Hawaii Driver License, Hawaii State ID, or the last 4-digits of your Social Security Number, you are required to provide proof of identification. Proof of identification includes a copy of:

- A current and valid photo identification; or
- A current utility bill, bank statement, government check, paycheck, or other government document that shows your name and address.

## Submitting Your Application

<b>County of Hawaii</b>	<b>County of Kauai</b>
25 Aupuni St. #1502 Hilo, HI 96720	4386 Rice St. #101 Lihue, HI 96766
<b>County of Maui</b>	<b>City &amp; County of Honolulu</b>
200 S. High St. Wailuku, HI 96793	530 S. King St. #100 Honolulu, HI 96813

## Language Assistance

Para kadagiti naipatarus a materiales a mainaig iti eleksion wenno tulong iti lengguahe tapno makompletoyo daytoy nga aplikasion, awagan ti Opisina Dagiti Eleksion (**Office of Elections**).

Para sa mga isinalin na babasahin tungkol sa eleksyon o upang makatanggap ng tulong sa wika sa pagkumpleto ng aplikasyon na ito, makipag-ugnayan sa Tanggapan ng mga Eleksyon (**Office of Elections**).

若想獲得電子檔的翻譯材料，或者需要協助填表事宜，請聯繫選舉辦公室 (**Office of Elections**)。

## Contact Us

For information about registering to vote, contact your **County Elections Division**.

**County of Hawaii** ..... (808) 961-8277  
**County of Maui**..... (808) 270-7749  
**County of Kauai**..... (808) 241-4800  
**City & County of Honolulu**.. (808) 768-3800

For additional voting information, contact the **Office of Elections**.

**Phone:** (808) 453-VOTE (8683)  
**Toll Free:** 1-800-442-VOTE (8683)

 **TTY:** (808) 453-6150  
**Toll Free TTY:** 1-800-345-5915

**Email:** elections@hawaii.gov  
**Website:** elections.hawaii.gov

# Voter Registration Application

## This application can be used for:

- First time registration
- Name change
- Address change
- Signature update





## Hawaii Doaropwehn Apsentih Aplikeisin (Kaweid ohng Kawehwe)

### English

### Pohnpeian

This application will authorize your ballot to be mailed to a temporary alternate address and will be valid only for the election year in which it was submitted.

Aplikeisin pahn mweidada noumw doaropwehn usuhs en kak pekeder nan posto ohng adires en lepin ansou oh pahn doadoahk nan sounpar en usuhs meh kapidelong.

Please print clearly in black ink.

Menlau inting sansanki pehn toantoal.

**1**

I am requesting an absentee ballot for the following election(s):

I pahn peki ehu doaropwehn apsentih ohng usuhs me mih pah(ka):

Primary Only

Primary Te

General Only

General Te

Primary & General

Primary oh General

Special

Usuhs Tohror

**2**

Last Name

Ahmw Lahs Neim

First Name

Tepin Edemw

M.I.

Meseng Inting (M.I.)

Suffix (Jr., II)

Mwurin Inting (Jr., II)

**3**

HI Driver License or HI State ID Number (if you do not have either, complete box 3b)

Diriper Laisen en HI de Nempehn Doaropwehn Kapehse ohng Wein HI (mah sohte noumw soahng ka koaros, wiada koakon 3b)

**3B**

I do not have a HI Driver License or HI State ID

Sohte nei Diraiper Laisen en HI, Doaropwehn Kapehse ohng Wein HI, de SSN

Provide the last 4 digits of your Social Security Number

Kihda nempe paiou me lahs en noumw Nempehn Social Security

I do not have a HI Driver License, HI State ID, or SSN

Sohte nei Diraiper Laisen en HI, Doaropwehn Kapehse ohng Wein HI, de SSN

**4**

Date of Birth

Rahn en Ipwidi

Phone Number

Nempehn Delepwohn

Email

Email



## English

## Pohnpeian

5	<p>If you are disabled and unable to read standard print, would you like to receive an electronic ballot?</p> <p>Yes, I am disabled and unable to read standard print and would like to request an electronic ballot to be sent to my email indicated on this application</p>	<p>Mah komw ahniki anahn tohrohr oh sohte kak wadek mesen inting, ke mwahuki ale ehu doaropwehn usuhs nan kompuhter?</p> <p>Ehng, I ahniki anahn tohrohr oh sohte kak wadek mesen inting oh men peki ehu doaropwehn usuhs nan kompuhter en pekederla nan nei email me mih nan aplikeisin wet</p>
	<p>Applicant must provide an email address to receive an electronic ballot.</p>	<p>Soun apilai anahne kihda adires en email pwehn kak alehdi doaropwehn usuhs nan kompuhter.</p>
6	<p>Residence Address (P.O. Box, R.R., S.R., are not acceptable)</p> <p>Mailing Address in Hawaii</p> <p>Same as Residence Address</p> <p>Apt. Number</p> <p>City</p> <p>Zip Code</p> <p>If your residence does not have a street address, describe the location (cross streets, landmarks).</p>	<p>Adires en Kousoan (P.O. Box, R.R., S.R., koaros sohte pahn alahlda)</p> <p>Adiresn en Posto nan Hawaii</p> <p>Duwehte Adires en Kousoan</p> <p>Nihmw Nempe</p> <p>Lopidi</p> <p>Zip Code</p> <p>Mah ahmw wasahn kousoan sohte aniki adires en nan ahl, kosoiahda wasahu (mehnia ahl, soahngen wasah kan me karanih).</p>
7	<p>Address to Mail Primary Ballot</p> <p>Hold for arrival</p> <p>Address to Mail General Ballot</p> <p>Hold for arrival</p>	<p>Adires me Doaropwehn Usuhs en Primary Pahn Pekerla Nan Posto</p> <p>Koledi Lau Leledo</p> <p>Adires me Doaropwehn Usuhs en General Pahn Pekerla Nan Posto</p> <p>Koledi Lau Leledo</p>



## English

## Pohnpeian

8

Warning: Any person who knowingly furnishes false information may be guilty of a Class C felony.

Mehn Kapehse: Emen aramas me pahn kihda mengitik meh ese me sapwung kak wiada dihp me toutou en Class C.

I hereby swear (or affirm) that all information furnished on this application is true and correct.

I kaukihla (de kamehlele) me soahng koaros mei kihda nan aplikeisin mehlel oh pwung.

If you are unable to sign, mark the signature line and have a witness provide their signature, address and phone number.

Mah ke sohte kak sain, kiengte lipwen inting pohn wasahn sain oh emen soun kadehde en kihda sain, adires, oh nempehn delepwohn.

Sign Here

Sain Wasah

Date

Rahn

Office Use Only

Ohng Ohpis Te

Primary Mailed

Pekeder Primary Nan Posto

Primary Received

Primary Alahldi

Remarks

Ireh kan

General Mailed

Pekeder General Nan Posto

General Received

General Alahldi

D/P

D/P

Document Number

Nempehn Doaropwe

Notice: The identity of the voter registration agency through which any voter was registered shall not be publicly disclosed. A person's declination to register to vote is also confidential and is used for voter registration purposes only (National Voter Registration Act of 1993).

Pakair: Wasa me soun usuhs kileledi ie sohte pahn langada ohng wei pokon. An aramas emen ah kahng iang kileledi en usuhs pil sohte pahn langada oh kin doadoahkong kileledi en soun usuhs te(National Voter Registration Act of 1993).

# Hawaii Absentee Ballot Application

This application will authorize your ballot to be mailed to a temporary alternate address and will be valid only for the election year in which it was submitted.

Please print clearly in black ink.

1 I am requesting an absentee ballot for the following election(s):  
 Primary Only     General Only     Primary & General     Special

2 Last Name \_\_\_\_\_ First Name \_\_\_\_\_ M.I. \_\_\_\_\_ Suffix (Jr., II) \_\_\_\_\_

3 HI Driver License or HI State ID Number  
**If you do not have either, complete box 3b.**

3b  I do not have a HI Driver License or HI State ID  
**Provide the last 4 digits of your Social Security Number.** [ ][ ][ ][ ]

I do not have a HI Driver License, HI State ID, or SSN

4 Date of Birth \_\_\_\_\_ Phone Number \_\_\_\_\_ Email \_\_\_\_\_

5 If you are disabled and unable to read standard print, would you like to receive an electronic ballot?  
 Yes. I am disabled and unable to read standard print and would like to request an electronic ballot be sent to my email indicated on this application. **Applicant must provide an email address to receive an electronic ballot.**

6 Residence Address (P.O. Box, R.R., S.R., are not acceptable) \_\_\_\_\_ Apt. Number \_\_\_\_\_ City \_\_\_\_\_ Zip Code \_\_\_\_\_

Mailing Address in Hawaii  Same as Residence Address    Apt. Number \_\_\_\_\_ City \_\_\_\_\_ Zip Code \_\_\_\_\_

**If your residence does not have a street address, describe the location (cross streets, landmarks).**

7 Address to Mail Primary Ballot  Hold for arrival    Address to Mail General Ballot  Hold for arrival

\_\_\_\_\_  
\_\_\_\_\_  
\_\_\_\_\_

**Warning: Any person who knowingly furnishes false information may be guilty of a Class C felony.**

I hereby swear (or affirm) that all information furnished on this application is true and correct.

8 **SIGN HERE** ▶ \_\_\_\_\_ Date \_\_\_\_\_

**If you are unable to sign, mark the signature line and have a witness provide their signature, address, and phone number.**

OFFICE USE ONLY	Primary Mailed	Primary Received	Remarks	<input type="checkbox"/> HRS §11-20	Document Number
	General Mailed	General Received	Clerk		



**Notice:** The identity of the voter registration agency through which any voter was registered shall not be publicly disclosed. A person's declination to register to vote is also confidential and is used for voter registration purposes only (National Voter Registration Act of 1993).



## Notice

You must be registered to vote in Hawaii to receive an absentee ballot. Confirm your voter registration or register to vote online at [elections.hawaii.gov](https://elections.hawaii.gov).

You may also submit a Voter Registration Application.

## Submitting Your Application

**County of Hawaii**    **County of Kauai**  
25 Aupuni St. #1502    4386 Rice St. #101  
Hilo, HI 96720    Lihue, HI 96766

**County of Maui**    **City & County of Honolulu**  
200 S. High St.    530 S. King St. #100  
Wailuku, HI 96793    Honolulu, HI 96813

## Deadline to Submit Application

Applications must be received by your County Elections Division no later than **7 days before Election Day**.

## Language Assistance

Para kadagiti naipatarus a materiales a mainaig iti eleksion wenno tulong iti lengguahe tapno makompletoyo daytoy nga aplikasion, awagan ti Opisina Dagiti Eleksion (**Office of Elections**).

Para sa mga isinalin na babasahin tungkol sa eleksyon o upang makatanggap ng tulong sa wika sa pagkumpleto ng aplikasyon na ito, makipag-ugnayan sa Tanggapan ng mga Eleksyon (**Office of Elections**).

若想獲得電子檔的翻譯材料，或者需要協助填表事宜，請聯繫選舉辦公室 (**Office of Elections**)。

## Contact Us

For information about registering to vote, contact your **County Elections Division**.

**County of Hawaii**..... (808) 961-8277  
**County of Maui**..... (808) 270-7749  
**County of Kauai**..... (808) 241-4800  
**City & County of Honolulu**.. (808) 768-3800

For additional voting information, contact the **Office of Elections**.

**Phone:** (808) 453-VOTE (8683)  
**Toll Free:** 1-800-442-VOTE (8683)

 **TTY:** (808) 453-6150  
**Toll Free TTY:** 1-800-345-5915

**Email:** [elections@hawaii.gov](mailto:elections@hawaii.gov)  
**Website:** [elections.hawaii.gov](https://elections.hawaii.gov)

# Absentee Ballot Application

**You must be registered to vote in Hawaii to receive an absentee ballot.**

This application will authorize your ballot to be mailed to a temporary alternate address and will be valid only for the election year in which it was submitted.





## Aplikeisin ohng Towehda Usuhs (Kaweid ohng Kawehwe)

### English

### Pohnpeian

Please print clearly in black ink.

Menlau inting sansanki pehn toantoal.

I hereby swear (or affirm) that the following information is true and correct:

I kaukihla (de kamehlele) me soahng koaros mei kihda nan aplikeisin mehlel oh pwung:

Office Use Only  
Voter ID No.

Ohng Ohpis Te  
Nein Soun Usuhs Nempehn Kapehse.

**1**

HI Driver's License Number

Nempehn Diraiper Laisin en HI

HI State ID Number

Nempehn ID en Wein HI

Social Security Number's  
last 4-digits

Lahs en nempe 4 en Social Security

**2**

Date of Birth (mm/dd/yy)

Rahn en Ipwidi (mm/dd/yy)

**3**

Last Name

Lahs Neim

First Name

Tepin Edemw

M.I.

Meseng Inting

**4**

Residence Address (Must be completed. P.O.  
Box, R.R., S.R., are not acceptable)

Adires en Kousoan (Anahne kanekehla. P.O.  
Box, R.R., S.R., koaros sohte pahn alahlda)

Apt. Number

Nimw Nempe

City/Town

Kousapw/Lopidi

Zip Code

Zip Code

**5**

Mailing Address in Hawaii (Street address or  
PO Box)

Adires en Posto nan Hawaii (Adires en Ahl de  
PO Box)

Same as Residence Address

Duwehte Adires en Kousoan

City/Town

Kousapw/Lopidi

Zip Code

Zip Code



**English**

**Pohnpeian**

**6**

If no street address, describe location of residence (Leave blank if #4 is completed).

City/Town

Zip Code

Mah sohte adires en ahl, koasoihda wasahn kousoan (Kedeh aude mah #4 wiawidahr).

Kousapw/Lopidi

Zip Code

Warning: Any person who knowingly furnishes false information may be guilty of a Class C felony.

Kousapw/Lopidi: Emen aramas me pahn kihda mengitik meh ese me sapwung kak wiada dihp me toutou en Class C.

**7**

Same Day/Election Day Voter Registration Affidavit or Voter Info Update

I hereby swear (or affirm) that:

For Federal, State, and County Elections:

Rahn Tehiu/Kisin Likou en Kileledi en Soun Usuh ni Rahn en Usuhs de Mengihtikpen Soun Usuhs.

I kaukihla (de kamehlele) me:

Ohng Usuhs en Federeal, State, oh County:

**A**

I am a citizen of the United States of America (Non-U.S. citizens including U.S. nationals do not qualify)

Yes / No

Ngehi wia towe mehleh en United States of America (Me sohte towe mehleh en U.S. iangahki me sang sapweng U.S. teikan sohte kak iang)

Eng / Soh

**B**

I am at least 16 years of age and I understand that I must be 18 years old by election day to vote

Yes / No

I sounpar 16 oh I wehwehki me I pahn anahne sounpar 18 rahn en usuhs pwehn kak iang usuhs

Eng / Soh

**C**

I am a resident of the State of Hawaii

Yes / No

I wia soun kousoan en Wein Hawaii

Eng / Soh

**D**

I have not and will not vote at any other voter service center for this election, and I have not and will not cast any other ballot for this election: and

I saikinte oh sohte pahn usuhs ni wasahn sahpis en usuhs ni usuhs wet, oh I saikinte oh sohte pahn wiada ehu doaropwehn usuhs nan usuhs wet: oh



## English

## Pohnpeian

**E**

I acknowledge that providing false information may result in a class C felony, punishable by a fine not exceeding \$1,000 or imprisonment not exceeding five years, or both.

Signature

Date

I ese mah ipahn kihda mengihtik me sapwung ikak dipada me toutou Class C, kalokolok oh pwain sohte daulih \$1,000 de seldi nan kalapwuhs sounpar limahu, de koaros.

Sain

Rahn

**8**

Read and Sign ONLY Upon Receipt of Your Ballot

I hereby swear (or affirm) that: 1) I am the person named above: 2) I am requesting an in-person ballot for myself and no other; and 3) all information furnished on this application is true and correct.

Signature

Date

Wadek oh Sain IHTE Ansou Ke Pahn Alehdi Noumw Doaropwehn Usuhs

I kaukihla (de kamehlele) me: 1) Ngei me sansal poweh: 2) I pekpeki ehu doaropwehn usuhs nan wasahn usuhs ohng ngei oh sohte men tohror; oh 3) koaros mengihtik me ikidah nan aplikeisin me mehleh oh pwung.

Saing

Rahn

If you are unable to sign, mark the signature area and have a witness provide signature, address and phone number below.

Witness Signature

Date

Address

Phone No.

Mah ke sohte kak sain, kiengte lipwen inting pohn wasahn sain oh emen soun kadehde en kihda sain, adires, oh nempehn delepwohn.

Sain en Soun Kadehe

Rahn

Adires

Nempehn Delepwohn



---

## English

## Pohnpeian

District/Precinct

Lopidi/Kousapw

Clerk

Kilerik

For Office Use Only

Ohng Doadoahk en Ohpis Te

Location Code

Nempehn Wasa

Notice: The identity of the voter registration agency through which any voter was registered shall not be publicly disclosed. A person's declination to register to vote is also confidential and is used for voter registration purposes only (National Voter Registration Act of 1993).

Pakair: Wasa me soun usuhs kileledi ie sohte pahn langada ohng wei pokon. An aramas emen ah kahng iang kileledi en usuhs pil sohte pahn langada oh kin doadoahkong kileledi en soun usuhs te(National Voter Registration Act of 1993).

# Application for In-Person Ballot

Important: Print clearly in dark ink <b>I hereby swear (or affirm) that the following information is true and correct:</b>		<i>Office Use Only</i> Voter ID No.	
1	HI Driver's License Number, HI State ID Number or Social Security Number's last 4-digits	2	Date of Birth (mm/dd/yy)
3	Last Name	First Name	M.I.
4	Residence Address (Must be completed. P.O. Box, R.R., S.R. are not acceptable)	Apt. No.	City/Town    Zip
5	Mailing Address in Hawaii (Street address or P.O. Box)		City/Town    Zip
6	If no street address, describe location of residence (Leave blank if box #4 is completed)		City/Town    Zip

**Warning: Any person who knowingly furnishes false information may be guilty of a class C felony.**

## Same Day / Election Day Voter Registration Affidavit OR Voter Info Update

I hereby swear (or affirm) that:  
 For Federal, State, and County Elections:

A. **I am a citizen of the United States of America** .....  YES     NO  
(Non-U.S.citizens including U.S. nationals do not qualify).

B. **I am at least 16 years of age and I understand that I must be 18 years old by election day to vote** .....  YES     NO

C. **I am a resident of the State of Hawaii** .....  YES     NO  
(The residence stated in this affidavit is not simply because of my presence in the State, but that the residence was acquired with the intent to make Hawaii my legal residence with all the accompanying obligations therein...)

D. **I have not and will not vote at any other polling place for this election, and I have not and will not cast any other ballot for this election; and**

E. **I acknowledge that providing false information may result in a class C felony, punishable by a fine not exceeding \$1,000 or imprisonment not exceeding five years , or both.**

Signature

Date

## Read and Sign ONLY Upon Receipt of Your Ballot

I hereby swear (or affirm) that: 1) I am the person named above; 2) I am requesting an in-person ballot for myself and no other; and 3) all information furnished on this application is true and correct.

Signature

Date

If you are unable to sign, mark the signature area and have a witness provide signature, address and phone number below.

Witness Signature \_\_\_\_\_ Date \_\_\_\_\_  
 Address \_\_\_\_\_ Phone No. \_\_\_\_\_

DISTRICT/PRECINCT	CLERK	FOR OFFICE USE ONLY	I.D. No.	VSCH / VSCK / EDRH / EDRK	Location Code	98
-------------------	-------	---------------------	----------	---------------------------	---------------	----



## **Wasahn Sahpis ohng Soun Usuhs oh Kalelapak me Kalapw Wiawi:**

### **KILELEDI EN SOUN USUHS**

Anahne kileledi en soun usuhs kapw. Ansou ke kileledier ohng usuhs, ke solahr anahne pwurehng kileledi ohng usuhs teiakn. Pwurehn kileledi anahnepete mah amw kousoan wekila de ke welian edepw nan mwolen kopwung.

Soun kileledi anahne towe mehler en U.S., kin kousoan Hawaii, oh sounpar 16 (mwohn kileledi). Ohng noumw aplikaisin, menlau kihda ehu doaropwehn kapehsehn met me mie kilel, pahsport de risiht en lioal, doaropwe sang bank, check sang kopworoment, de peidei me mie edempw oh ahmw adires met.

Mie ansou en kileledi ohng soun usuhs ni 10 en rahn mwohn Rahn en Usuhs, ahpw ke kak kileledi ansou koaros oh doadoahngki Kileledi en Soun Usuhs nan Internet de kohla Wasahn Sahpis ohng Soun Usuhs.

Ke kak kamehele noumw kileledi en usuhs nan Internet ni [www.olvr.hawaii.gov](http://www.olvr.hawaii.gov) oh kihda Diraiper Laisen en Hawaii en met de Nempehn Kapehse en Hawaii, oh nempe paiou me lahs en noumw Nempehn Social Security. Ke kak eker aht ohpis ni (808) 768-3800. Menlau onopada pwe ken kihda edemw, adires en kousoan, oh rahn en ipwidi pwe sen kak kamehle ia mwomwomw.

### **KILELEDI EN SOUN USUSH – ANAHNEPEN ADIRES EN KOUZOAN**

P. O. Box oh adires en pesines sohte kak alahla ohng adires en kousoan. Mah sohte amw adires en wasahn kousoan, kaweidpen wasahn kousoan udahn ananepe. Adires en wasahn kousoan anahnepe pwehn kaweidada soun wia usuhs kan en kieng uhk ahmw lopidi en usuhs.

### **USUHS EN APSENTIH (KOHsang WASAHN KOUZOAN)**

Doadoahngki “Aplikeisin en Wen Ansou” mah ke sohte pahn mih nimwom ansoun usuhs. Mah mie anahnepe, ke kak peki ehu doaropwehn apsentih ohng usuhs en Primary oh General ansoutehkis oh peki ren kadarala ni adires koa. Doaropwehn usuhs en apsentih anahne alahldi kuloak 7:00 ni soutik (HST) ni Rahn en Usuhs pwehn iang wadawad. Sang ni Kosonned en Wehi, usuhs iou me alahldi mwurin kuloak 7:00 nin soutik en Rahn en Usuhso sohte pahn iang wadawad.

### **USUHS EN – PRIMARY**

Weihn Hawaii kin wiahte pake ehu Usuhs en Primary. Ke pahn ale kaweid en pilada ahmw pwihn en politik mwohn ahmw pahn pilada noumw kandideit. Kandideit en pwihn en politik pahn irekdi ni ehu wasa nan doaropwehn usuhso. Usuhs en pwihn riahu SOHTE mweimweida.

### **USUHS – KAPWUNGALA SAPWUNG NAN DOAROPWEHN USUHS DE ENPELEOP**

Mah ke wiada sawpung nan noumw doaropwehn usuhs de enpelop, menlau dehr doadoahngki mehn ireis me teip de pihl, de wia inting mehn kapwungala sawpung nan noumw doaropwehn usuhso. Eker aht ohpis ni (808) 768-3800 pwehn welialihda doaropwehn usuhs. Mah konehng wiawi pwehki ansou de soahng teikan, nait tohn doadoahk pahn kaweidada dahme ke kak wia me kakete ken kohla ale ehu doaropwehn usuhs ni Wasahn Sahpis en Soun Usuhs kan.



## **USUHS – IA WASAHKAN ME KAK PWILIDIE OH RAHN**

Ke kak wahla noumw doaropwehn usuhs me intingehr ni Wasahn Sawas ohng Soun Usuhs de Wasahn Pwilidi mah epahn alahldi kuloak 7:00 nin soutik ni Rahn en Usuhs. Pwehn kilang irekdi en wasahkan oh awa en doadoahk, kohla [www.honoluluelections.us](http://www.honoluluelections.us).

## **WIEPEN USUHS**

Sang ni ruwes en Koasonned en Hawaii §11-132, nan iren piht riewiki sang wasahn sawas en soun usuhs, wasahn pwilidi, oh wasahn sawas teikan, sohte mweimwei kilel de nehnepeseng en doaropwehn kampein, sain, de songen dipwisou en kampein pwehn nahkada soun usuhs me uhong de pwungki emen aramas de irehkan nan doaropwehn usuhs.





## Kaweidpen Usuhs (Kaweid ohng Kawehwe)

### English

### Pohnpeian

#### Make Your Vote Count

##### Mark Your Ballot

Completely fill in the box to the left of your choice with a black or blue pen.

If you vote for more candidates than allowed, your votes for that contest will not be counted.

If you make a mistake, contact your County Elections Division for a replacement. Do not use whiteout.

You will not be issued a replacement ballot once your ballot has been received by your County Elections Division

#### Wiada Ahmw Usuhs en Mie Katepe

##### Intingi Noumw Doaropwehn Usuhs

Audeda koakon me mihmi pali meing en ahpw piipil ki ehu pehn toantoahl de mei.

Mah ke us tohto sang kandideid me mweimweida, amw usuhs sohte pahn iang wadawad.

Mah ke wiada sapwung, lokaiang ahmw Kempahn Usuhs en Wehi ohng welianda doaropwehn usuhs. Kedepa doadoahngki mehn irisala.

Ke sohte pahn alehdi weliepen doaropweh usuhs mwurin ansou noumw doaropwehn usuhs pahn alahdier ni amw Kempahn Usuhs en Wehi

#### Seal and Sign Your Return Envelope

Re-fold your ballot and place in the ballot secrecy sleeve. The ballot secrecy sleeve keeps your votes anonymous while being processed for counting.

Place the ballot secrecy sleeve in the return envelope.

SIGN and seal the return envelope. Your ballot will not be counted without your signature.

#### Katengahla oh Saing Noumw Enpelop Me Pahn Kapwurpwurla

Pwurehng kihpene noumw doaropwehn usuhs oh kieng nan wasahn nekinek rir en usuhs. Mehn nekinek rir en usuhs karukala ahmw usuhs ni ansou repahn kaukaunop wadawad.

Kieng noumw doaropwehn usuhs nan wasahn nekinek rir en enpelop me pahn kapwurpwurla.

Sain oh katengehdi enpelop me pahn kapwurpwurla. Noumw doaropwehn usuhs sohte pahn iang wadawad mah ke sohte sain.



## English

## Pohnpeian

### Return Your Ballot

The return envelope is pre-addressed and postage-paid.

Your voted ballot must be received by the County Elections Division by 7:00 pm on Election Day, August 10, 2024.

When dropping your ballot in the mail, send it 3 days prior to Election Day to ensure it is received by the deadline.

Alternatively, places of deposit are established to drop off your voted ballot.

### Kapwurehla Noumw Doaropwehn Usuhs

Enpelop me pahn kapwurpwurla mieier adires oh pweipweidier nan posto.

Noumw doaropwehn usuhs me intingdah anahne alahldi ni Kempahn Usuhs en Wehi ni kuloak 7:00 nin soutik ni Rahn en Usuhs.

Ansou kepahn kadar noumw doaropwehn usuhs nan posto, kadar rahn 3 mwohn Rahn en Usuhs pwehn kak alahldi mwohn rahn me koasoandi.

De pile hu, wasahn pwilidi kin wiawiadahr rahn en pesines 5 mwohn Rahn en Usuhs pwe ken kak pwilidi noumw doaropwehn usuhs me intingdier.

### Need Assistance?

You may receive voting assistance from a person of your choice excluding your employer or agent of that employer, agent of your labor union, or a candidate for any office that is listed on the ballot.

### Anahne Sawas?

Ke ka ale sawas en usuhs sang emen aramas ke pilada ihte sohte sang ahmw kaun en doadoahk, weliepen wasahn doadoahk, weliepen amw pwihn en minimin, de emen candidate sang nan irekdi en doaropwehn usuhs.

### Contact your County Elections Division:

County of Hawaii

County of Maui

County of Kauai

City and County of Honolulu

### Wewelahng ahmw Kempahn Usuhs en Wehi

Wein Hawaii

Lopidi en Maui

Lopidi en Kauai

Kousapw oh Lopidi en Honolulu

### Go online to:

Confirm your ballot was received

Locate a voter service center or place of deposit

### Kohla nan Internet ohng:

Tehk mah noumw doaropwehn usuhs alahldi

Rapahkida ehu wasahn sawas ohng soun usush de wasahn pwilidi



## English

## Pohnpeian

Voting in the Primary Election

Usuhs nan Primary

Step 1

Keiun Dake 1

Select ONE political preference

Pilada EHU politik me ke pwungki

You MUST select ONE political preference below:

Ke ANAHNE pilada EHU politik me ke pwungki pah:

Party 1

Pwin 1

Party 2

Pwin 2

Party 3

Pwin 3

Party 4

Pwin 4

Party 5

Pwin 5

Nonpartisan Ballot (N)

Doaropwehn Usuhs Mah Sohte lahng Pwihn

Step 2

Keriaun Dake 2

Vote ONLY for the candidates of your selected political preference

Us TE kandideid en pwihn me ke pilada

U. S. Representative

Weliepen U.S.

State Senate

Weliepen Wei Lap

State Representative

Weliepen Wehi

Vote for Not More Than One (1)

Us Sohte Tohto Sang Emen (1)

Candidate 1

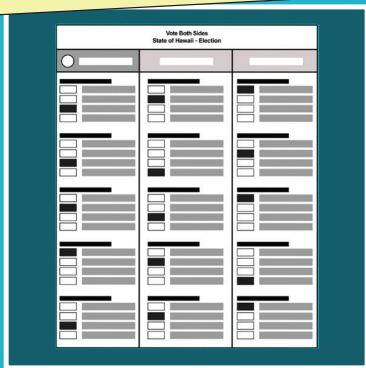
Weliepe 1

Hawaii conducts a single party Primary Election to nominate the candidates who will represent each party in the General Election.

Hawaii kin wia usuh tehiou ohng Usuhs en Primary pwehn pilada kandideid me pahn welian ehu pwihn nan Usuhs en General. Koaros kak usuhs nan Ohpis en Hawaiian Affairs oh nan Sia i en Wei kan me mih nan mwurin doaropwehn usuhs.

Everyone may vote in the Office of Hawaiian Affairs and County Contests found on the backside of the ballot.

# Make Your Vote Count



## Mark Your Ballot

Completely fill in the box to the left of your choice with a black or blue pen.

If you vote for more candidates than allowed, your votes for that contest will not be counted.

If you make a mistake, contact your County Elections Division for a replacement ballot. Do not use whiteout.

You will not be issued a replacement ballot once your ballot has been received by your County Elections Division.

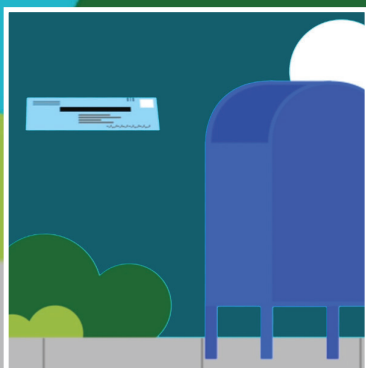


## Seal and Sign Your Return Envelope

Re-fold your ballot and place in the ballot secrecy sleeve. The ballot secrecy sleeve keeps your votes anonymous while being processed for counting.

Place the ballot secrecy sleeve in the return envelope.

SIGN and seal the return envelope. Your ballot will not be counted without your signature.



## Return Your Ballot

The return envelope is pre-addressed and postage-paid.

Your voted ballot must be received by the County Elections Division by 7:00 pm on Election Day, August 10, 2024.

When dropping your ballot in the mail, send it 3 days prior to Election Day to ensure it is received by the deadline.

Alternatively, places of deposit are established 5 business days prior to Election Day to drop off your voted ballot.

## Need Assistance?

You may receive voting assistance from a person of your choice excluding your employer or agent of that employer, agent of your labor union, or a candidate for any office that is listed on the ballot.

## Contact your County Elections Division:

County of Hawaii	(808) 961-8277
County of Maui	(808) 270-7749
County of Kauai	(808) 241-4800
City and County of Honolulu	(808) 768-3800

## Go online to:


- Confirm your ballot was received
- Locate a voter service center or place of deposit

[www.elections.hawaii.gov](http://www.elections.hawaii.gov)

# Voting in the PRIMARY ELECTION

## Step 1

Select ONE political preference

 **Start voting here**

You **MUST** select **ONE** political preference below:

<input type="checkbox"/>	PARTY 1
<input type="checkbox"/>	PARTY 2
<input type="checkbox"/>	PARTY 3
<input type="checkbox"/>	PARTY 4
<input type="checkbox"/>	PARTY 5
<input type="checkbox"/>	NONPARTISAN BALLOT (N)

Instructions

Vote **ONLY** for the candidates of your selected political preference

**Party 2**

**U.S. Representative**  
Vote For Not More Than One (1)

Candidate 1

**State Senate**  
Vote For Not More Than One (1)

Candidate 1

**State Representative**  
Vote For Not More Than One (1)

Candidate 1

## Step 2

**Hawaii conducts a single party Primary Election to nominate the candidates who will represent each party in the General Election. Everyone may vote in the Office of Hawaiian Affairs and County Contests found on the backside of the ballot.**



# Doaropwehn Usuhs Me Kilel Pekeder (Irekidi en Lepin Lokaia en Doaropwehn Usuhs en 2024 oh kawehwe)

## Facsimile Ballot – Glossary of 2024 Ballot Terms and Translation

	English	Pohnpeian
	Start Voting Here	Tepda usuhs wasah
	You MUST select ONE political party or nonpartisan ballot below.	Ke ANAHNE pilada EHU politik me ke pwungki pah:
	<b>INSTRUCTIONS</b>	<b>MEHN KAWEID</b>
1	You MUST select ONE political preference from the box above for your votes to count.	Ke ANAHNE pilada EHU pwihn en politik sang nan koakon poweh pwe ahmw usuhs en kak iang wadawad.
2	Vote ONLY for candidates within your selected preference.	Us TE kandideid kan me ke piladah.
	Votes for another political preference will not be counted.	Usuhs ohng ehu pwihn tohror sohte pahn iang wadawad.
3	You are eligible to vote for ALL of the Office of Hawaiian Affairs and County contests on the back.	
	<b>MAKING SELECTIONS</b>	<b>WIADA PILIPIL</b>
	Completely fill in the box to the left of your choice with a black or blue pen. Do not use whiteout.	Audeda koakon me mihmi pali meing en ahpw piipil ki ehu pehn toantoahl de mei. Kedepa doadoahngki mehn irisala.
	Vote for Not More than One (1)	Us Sohte Tohto Sang Emen (1)
	Vote for Not More than Three (3)	
	If you vote for more candidates than allowed in a contest, your votes for that contest will not be counted.	Mah ke us tohto sang kandideid me mweimweida, amw usuhs sohte pahn iang wadawad.



## English

## Pohnpeian

If you make a mistake, request a replacement ballot at [hnlvote.ehawaii.gov](http://hnlvote.ehawaii.gov) or call (808) 768-3800. Do not use whiteout.

Mah ke wiada sapwung, lokaiang ahmw Kempahn Usuhs en Wehi ohng welianda doaropwehn usuhs. Kedepa doadoahngki mehn irisala.

### GLOSSARY OF 2024 BALLOT TERMS

### IREKIDI EN LEPIN LOKAIA EN DOAROPWEHN USUHS EN 2024

Precinct – The geographic area that is the basis for determining which contests and issues the votes legally residing in that area are eligible to vote on.

Lopidi – Wasa me pilada mehnia siai de ire me soun usuhs me koukousong wasahu kak iang us.

Federal Contests – Any primary, general, or special election in which a candidate for Federal office appears on the ballot.

Siai en Wehi Lap - Ehu primary, general, de usuhs tohror me kandideid en ohpis en wehi lap ka kiang mih loale.

U. S. Senator

Senator en U.S.

U. S. Representative

Weliepen U.S.

State Contests – Contests for members to State Offices, including Governor, Lieutenant Governor, and State Legislative Offices

Siai en Wehi – Siai ohng tohn Ohpis en Wehi, iangaki Kepina, Keriahu en Kepina, oh Ohpis en Welipen Wehi kan.

Governor

Kepina

Lieutenant Governor

ahun Kepina

State Senator

Senator en Wehi

State Representative

Weliepen Wehi

Office of Hawaiian Affairs (OHA) – OHA is a public agency responsible for improving the wellbeing of Native Hawaiians.

Ohpis en Hawaiian Affairs (OHA) – OHA wia ohpis en tohn wehi pwe kin pwukoahki kamwahuiala mour en Uhdak en Mehn Hawaii.

The agency is governed by a Board of Trustees, made up of nine members who are elected statewide to serve four-year terms and set organization policy.

Me kin kaun oh katanga ohpis wet ie Board en Trustees, me wiawihkida meh duwemen mekin usuhs sang tohn wehi pwehn wia sahpis en sounpar 4 oh wiada koasondi en ohpis wet.

Hawaii Resident Trustee

Tohn Hawaii Trustee



## English

## Pohnpeian

Maui Resident Trustee

Tohn Maui Trustee

Oahu Resident Trust

Tohn Oahu Trustee

At-Large Trustee

At-Large Trustee

County Contests – Contests for members to County Offices, including Mayor, Prosecuting Attorney, and City Council District Offices

Siai en Wehi – Siai en tohn Ohpis en Wehi, iangahki Mayor, Prosecuting Attorney, oh Ohpis en City Council District.

District Councilmember

Weliepen Districk

Proposed Amendments to the Honolulu City Charter

Pekpek en Welianda Honolulu City Charter

Proposed Amendments to the Hawaii State Constitution

Pekpek en Wekdekla ohng Wein Hawaii Constitution



**Start Voting Here**

You **MUST** select **ONE** political preference below:

GREEN PARTY (G)

NONPARTISAN BALLOT (N)

CONSTITUTION PARTY (C)

ALOHA AINA PARTY (A)

REPUBLICAN PARTY (R)

LIBERTARIAN PARTY (L)

DEMOCRATIC PARTY (D)

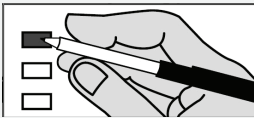
---

**Instructions**

- You **MUST** select **ONE** political preference from the box above for your votes to count.
- Vote **ONLY** for candidates within your selected preference. Votes for another political preference will not be counted.
- You are eligible to vote for **ALL** of the Office of Hawaiian Affairs and County Contests on the back.

---

**Making Selections**



Completely fill in the box to the left of your choice with a black or blue pen.

If you vote for more candidates than allowed in a contest, your votes for that contest will not be counted.

If you make a mistake, request a replacement ballot at [hnlvote.ehawaii.gov](http://hnlvote.ehawaii.gov) or call (808) 768-3800. Do not use whiteout.

**Green Party (G)**

**U.S. Senator**  
Vote For Not More Than One (1)

CANDIDATE A

CANDIDATE B

**U.S. Representative**  
Vote For Not More Than One (1)

CANDIDATE A

CANDIDATE B

**Governor**  
Vote For Not More Than One (1)

CANDIDATE A

CANDIDATE B

**Lieutenant Governor**  
Vote For Not More Than One (1)

CANDIDATE A

CANDIDATE B

**State Senator**  
Vote For Not More Than One (1)

CANDIDATE A

CANDIDATE B

**State Representative**  
Vote For Not More Than One (1)

CANDIDATE A

CANDIDATE B

**Nonpartisan Ballot (N)**

**U.S. Senator**  
Vote For Not More Than One (1)

CANDIDATE A

CANDIDATE B

**U.S. Representative**  
Vote For Not More Than One (1)

CANDIDATE A

CANDIDATE B

**Governor**  
Vote For Not More Than One (1)

CANDIDATE A

CANDIDATE B

**Lieutenant Governor**  
Vote For Not More Than One (1)

CANDIDATE A

CANDIDATE B

**State Senator**  
Vote For Not More Than One (1)

CANDIDATE A

CANDIDATE B

**State Representative**  
Vote For Not More Than One (1)

CANDIDATE A

**Constitution Party (C)**

**U.S. Senator**  
Vote For Not More Than One (1)

CANDIDATE A

CANDIDATE B

**U.S. Representative**  
Vote For Not More Than One (1)

CANDIDATE A

CANDIDATE B

**Governor**  
Vote For Not More Than One (1)

CANDIDATE A

CANDIDATE B

**Lieutenant Governor**  
Vote For Not More Than One (1)

CANDIDATE A

CANDIDATE B

**State Senator**  
Vote For Not More Than One (1)

CANDIDATE A

**State Representative**  
Vote For Not More Than One (1)

CANDIDATE A

**Aloha Aina Party (A)**

**U.S. Senator**  
Vote For Not More Than One (1)

CANDIDATE A

CANDIDATE B

**U.S. Representative**  
Vote For Not More Than One (1)

CANDIDATE A

CANDIDATE B

**Governor**  
Vote For Not More Than One (1)

CANDIDATE A

CANDIDATE B

**Lieutenant Governor**  
Vote For Not More Than One (1)

CANDIDATE A

CANDIDATE B

**State Senator**  
Vote For Not More Than One (1)

CANDIDATE A

**State Representative**  
Vote For Not More Than One (1)

CANDIDATE A

**Start Voting Here**

You **MUST** select **ONE** political preference below:

GREEN PARTY (G)

NONPARTISAN BALLOT (N)

CONSTITUTION PARTY (C)

ALOHA AINA PARTY (A)

REPUBLICAN PARTY (R)

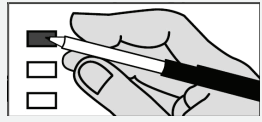
LIBERTARIAN PARTY (L)

DEMOCRATIC PARTY (D)

**Instructions**

- 1 You **MUST** select **ONE** political preference from the box above for your votes to count.
- 2 Vote **ONLY** for candidates within your selected preference. Votes for another political preference will not be counted.
- 3 You are eligible to vote for **ALL** of the Office of Hawaiian Affairs and County Contests on the back.

**Making Selections**



Completely fill in the box to the left of your choice with a black or blue pen.

If you vote for more candidates than allowed in a contest, your votes for that contest will not be counted.

If you make a mistake, request a replacement ballot at [hnlvote.ehawaii.gov](http://hnlvote.ehawaii.gov) or call (808) 768-3800. Do not use whiteout.

**Green Party (G)**

**U.S. Senator**  
Vote For Not More Than One (1)

CANDIDATE A

CANDIDATE B

**U.S. Representative**  
Vote For Not More Than One (1)

CANDIDATE A

CANDIDATE B

**Governor**  
Vote For Not More Than One (1)

CANDIDATE A

CANDIDATE B

**Lieutenant Governor**  
Vote For Not More Than One (1)

CANDIDATE A

CANDIDATE B

**State Senator**  
Vote For Not More Than One (1)

CANDIDATE A

CANDIDATE B

**State Representative**  
Vote For Not More Than One (1)

CANDIDATE A

CANDIDATE B

**Nonpartisan Ballot (N)**

**U.S. Senator**  
Vote For Not More Than One (1)

CANDIDATE A

CANDIDATE B

**U.S. Representative**  
Vote For Not More Than One (1)

CANDIDATE A

CANDIDATE B

**Governor**  
Vote For Not More Than One (1)

CANDIDATE A

CANDIDATE B

**Lieutenant Governor**  
Vote For Not More Than One (1)

CANDIDATE A

CANDIDATE B

**State Senator**  
Vote For Not More Than One (1)

CANDIDATE A

CANDIDATE B

**State Representative**  
Vote For Not More Than One (1)

CANDIDATE A

**Constitution Party (C)**

**U.S. Senator**  
Vote For Not More Than One (1)

CANDIDATE A

CANDIDATE B

**U.S. Representative**  
Vote For Not More Than One (1)

CANDIDATE A

CANDIDATE B

**Governor**  
Vote For Not More Than One (1)

CANDIDATE A

CANDIDATE B

**Lieutenant Governor**  
Vote For Not More Than One (1)

CANDIDATE A

CANDIDATE B

**State Senator**  
Vote For Not More Than One (1)

CANDIDATE A

**State Representative**  
Vote For Not More Than One (1)

CANDIDATE A

**Aloha Aina Party (A)**

**U.S. Senator**  
Vote For Not More Than One (1)

CANDIDATE A

CANDIDATE B

**U.S. Representative**  
Vote For Not More Than One (1)

CANDIDATE A

CANDIDATE B

**Governor**  
Vote For Not More Than One (1)

CANDIDATE A

CANDIDATE B

**Lieutenant Governor**  
Vote For Not More Than One (1)

CANDIDATE A

CANDIDATE B

**State Senator**  
Vote For Not More Than One (1)

CANDIDATE A

**State Representative**  
Vote For Not More Than One (1)

CANDIDATE A

## MARK • MAIL • MATTER

-  If you do not sign, your ballot will not be counted!
-  Must be received by **7p.m. Election Day** to be counted.
-  Affix foreign air mail postage if mailed from a foreign postal facility.

1-987654 9123456 Dist-Prec: 40-04 P BTC: 518  
1234 ALOHA LN



## AFFIRMATION STATEMENT

In signing, I affirm: I am a resident and registered voter of the precinct and representative district as indicated on the left and have voted this ballot without the personal assistance of my employer, union agent, or any candidate.

## SIGN IN BOX

JOE A. VOTER

A witness must sign below only if a voter uses a mark as a signature.  
Power of attorney is NOT acceptable.

\_\_\_\_\_  
Witness Signature

\_\_\_\_\_  
Address/Phone

JOE A. VOTER  
PO BOX 9999  
HONOLULU, HI 96813



## **Doaropwehn Usuhs Me Kapwurpwurla (No. 10) Enpelop Irehkan**

Mah ke sohte pahn sain, noumw doaropwehn usuhs sohte pahn iang wadawad!

Anahne alahldi kuloak 7 nin soutik ni Rahn en Usuhs pwehn iang wadawad.

Kieng postohn sompihr mah kohsang ehu posto en sapw liki.

Anahne ehu weliepen doaropwehn usuhs? Kohla [www.honoluluelections.us](http://www.honoluluelections.us) de eker aht ohpis ni 808-768-3800.

OFFICE OF THE CITY CLERK  
PO BOX 30940  
HONOLULU HI 96820-9971

### **AFFIRMATION STATEMENT**

Ansou I sain, I kasalehda: Ikin kousoan sahpwet oh soun usuhs me kilkilel wasahn usuhs me sansalehr pali maun oh usuhs her nan doaropwehn usuhs ni sohte sawas sang ahi wasahn doadoahk, weliepen ahi wasahn doadoahk, weliepen ahi pwihn en minimin, de emen candidate sang nan irekdi en doaropwehn usuhs.

### **Koakon en Sain**

Soun kadehde men anahne sain pah mah soun usuhs men doadaohngki.  
Doaropwehn Soun Sawas SOHTE pahn alahlda..

Sain en Soun Kadehke

Adires/Delepwohn