



'Ofisa Pālota o Honolulu Pepa Fa'asāmoa

Honolulu Elections Division

Samoan Language Kit



Lisi o Mataupu/Anotusi

Table of Contents

Pepa Fa'amatalaga o Tagata Palota

Voter Information Brochure

Fa'amatalaga mo Tagata Palota o le Palota 2024

2024 Election Voter Information

Pepa Talosaga mo Tagata Palota (Ta'iala o Fa'aliliuga)

Voter Registration Application Form (Translation Guide)

Pepa Talosaga mo Tagata Hawaii e Toesea (Ta'iala o Fa'aliliuga)

Hawaii Absentee Application Form (Translation Guide)

Talosaga mo le Tagata e Palota i totonu o le Fale Palota (Ta'iala o Fa'aliliuga)

Application for In-Person Ballot (Translation Guide)

Auaunaga mo Tagata Palota (Lisi of Fesili ma Tali po'o FAQ)

Voter Service Center FAQ

Faatonuga o le Palota (Ta'iala o Fa'aliliuga)

Voting Instructions (Translation Guide)

Palota i le Fesi (Tu'u faatasiga o Aiaiga o le Palota 2024 ma Fa'aliliuga)

Facsimile Ballot (Glossary of 2024 Ballot terms and translation)

#10 Teutusi

#10 Envelope

Pe Paapefea O na Resitara e Palota

I luga o le initaneti www.olvr.hawaii.gov

I le meli pe afio mai i:

Elections Division
Office of the City Clerk
530 S. King St, Room 100
Honolulu, HI 96813

Lolomi ifo se pepa talosaga:

www.honoluluelections.us

Pe piki i se nofoaga nei:

- Nofoaiga Palota o Aai Uma
- Ofisa Meli a le Lunaite Sitete
- Matagaluega o laisene Avetaavale
- Le tele o ofisa a le malo a le Sitete o Hawaii
- Fale Tusi
- Tusi Lafoga a le Sitete o Hawaii
- Tusi Hawaii e ta'ua Hawaiian Telcom

Yellow Pages

Afai ua e resitara e palota ma ua lelei ma sa'o ona e resitaraina, ua autometi ona e maua se palota i le meli. E lei se fa'aailoga fa'apitoa mo le Aso Palota o le a faia!



Logo mai matou:

(808) 768-3800
www.honoluluelections.us
City & County of Honolulu
Office of the City Clerk, Elections Division
530 S King St, 100
Honolulu, HI 96813

Mulimuli mai i luga o le initaneti mo faamatalaga taua ma tala fou!



Twitter
[@HNLelections](https://twitter.com/HNLelections)



[@HNLelections](https://www.facebook.com/HNLelections)



[@HNLelections](https://www.instagram.com/HNLelections)



MARK • MAIL • MATTER

Paid for by the taxpayers of the City and County of Honolulu



**Aai & Itumalo o Honolulu
Ofisa o le Faigaluega a le Aai
Matagaluega o Palota**

FAAMATALAGA PALOTA

O Ai E Mafai Ona Resitara E Palota

- **Se sitiseni a le lunaitesitete**

O ē e le o ni sitiseni a le U.S. po o Tagatanuu U.S. e lē agavaa

- **la 16 tausaga**

(Manaomia ona atoa le 18 tausaga e palota ai)

- **Tagata Nofomau i le Sitete o Hawaii**

O le nofomau e le ona o le i ai i lenei sitete, ae ua maua ma le fa'amoemoe ia avea Hawaii ma nofoaga e nofomau ai i lalo o le tulafono ma ia i ai tiute uma o lo'o aofia ai.

- **Afai ua e resitara e palota ma ua lelei ma sa'ona e resitara, ua autometi ona e maua se palota i le meli. E leai se fa'aaloga fa'apitoa mo le Aso Palota o le a faia!**

Siaki le tulaga o lau resitara i le asi ifo www.olvr.hawaii.gov ia i ai se Laisene Avelaavale Hawaii/ID mai le Sitete o Hawaii, pe vili mai le matou ofisa.

- **Palota Lē Auai**

Afai o le a e toese atu ma ua le satete, ua manaomia ona lafo se palota i se tuatusi mo se taimi puupuu, faatumu ifo le fomu Pepa Talosaga mo Palota Le Auai.

- **Aso faauma ai resitara Palota**

O pepa talosaga mo palota e manaomia ona maua mai e le Ofisa o le Failautusi ae le'i pasia le aso sefuluae a o le'i faia le ulua'i palota, palota lautele, po o se palota faapitoa.

- **Faaleogaina o Resitara Palota**

Asi atu i le matou saili i luga o le initaneti pe vili mai le matou ofisa mo se fesoasoani.

Faatonuga Palota

Faitau faalelei faatonuga mo le palota ma le teutusi.

Saini le faamatalaga tauto pe a e toe faafo'i mai le teutusi! O le a LĒ faitauina lau palota pe a e leai sau saini.

Fai se fuafuaga i le toe faafo'i maia o lau palota. O palota ua mauaina **pe a te'a le 7:00 PM** i le Aso Palota o le a LĒ faitauina. Faailoga meli E LĒ auai.

- **Faafu'o lau palota:**

- I se tasi o nofoaga tali
- I se Nofoga Autu o Tagata Palota

- I le meli – E leai se fotogi meli e manaomia! Fuafua le taimi tiliva a le USPS pe a toe fa'afu'o lau palota i aso mulimuli e o'o atu i le Aso Palota.
- Mo nofoaga ma aso avanoa o nofoaga o i ai pusa palota o lata ifo ia oe po o le Nofoga Autu o Tagata Palota, asiasi i la matou saili i luga o le initaneti pe vili mai le matou ofisa.

- **Palota Suia**

Asi ifo i la matou saili i luga o le initaneti pe vili mai le matou ofisa.

Nofoaga Autu O Tagata Palota

- Fesoasoani faapitoa mo palota
- Fesoasoani palota
- Resitara ma palota i tua atu ma le aso faamuta a le resitara palota
- Piki ifo se palota suia

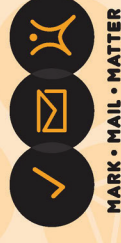
Tatala i aso pisinisi e 10 a le'i oo i Aso Palota ta'itasi
Aso Gafua – Aso Toona'i 8:00 AM – 4:30 PM
Aso Palota 7:00 AM – 7:00 PM

- **Honolulu Hale**

530 S King St.
Honolulu, HI 96813

- **Kapolei Hale**

1000 Uluohia St.
Kapolei, HI 96707





Taulaga ma Itumalo o Faamatalaga o Tagata Palota

Ulua'i Faiga Palota

Aso To'onai, Aukuso 10, 2024

Faiga Palota Lautele

Aso Lua, Novema 5, 2024

Aso Tāua Faaopoopo

Aso Faamutaina ai le resitalaina o Tagata Palota

Ulua'i Faiga Palota- Aso Lulu, Lulai 31, 2024*

Faiga Palota Lautele- Aso Lua, Oketopa 28, 2024*

**e mafai ona fa'aaauu lou resitala i so'o se taimi e fa'aaogaina ai le Fa'ainitaneti o le Fa'amauina o Tagata Palota po'o le tagata lava ia ile Nofoaga o Au'aunaga mo Tagata Palota.*

Nofoaga o Au'aunaga mo Tagata Palota & Aso

Va'ai le lisi o lo'o tu'uina atu i le pito i tua o le pepa

Nofoaga e Tu'u ai & Aso

Va'ai le lisi o lo'o tu'uina atu i le pito i tua o le pepa

Resitalaina i luga ole laiga po'o le initaneti

E mana'omia se Laisene Aveta'avale a le Setete o Hawaii po'o le ID a le Setete o Hawaii o loo aoga e fa'aoga ai le faiga o le resitalaina o tagata palota i luga ole initaneti. Fa'aoga le so'oga (po'o le link) o lo'o i lalo e o'o atu ai i le nofoaga o le Resitalaina o Tagata Palota i luga ole laina (initaneti) i le Ofisa o Faiga Palota a le Setete o Hawaii. [So'otaga \(po'o le link\) Resitala mo Tagata Palota i luga ole Laina \(po'o initaneti\)](#)



3 auala faigofie e resitala ai

1) Resitalaina Initaneti

O lo'o maua le faiga mo le resitalaina o tagata palota i luga o le initaneti a le Ofisa o Faiga Palota a le Setete, i luga o le upegatafa'ilagi a le Ofisa o Faiga Palota

[Online Voter Registration link](#)

E mana'omia se Laisene Aveta'avale a le Setete o Hawaii po'o le ID a le Setete o Hawaii o lo'o aoga, e fa'aoga ai le faiga o le resitalaina o tagata palota i luga ole laina. O talosaga uma mo le resitalaina o tagata palota ma talosaga o i latou e le auai i le palota, o le a mulimulita'i i aso e gata mai ai ua fa'atulagaina.

2) Si'itia mai se Pepa Talosaga

Si'itia mai le pepa talosaga, e lolomi ma meli i totonu, iinei: [Application Form Download link](#)

Tu'u mai se pepa fa'atumu ua mae'a pe afai o lo'o e resitala e palota mo le taimi muamua pe ua e sui lou tuatusi pe ua suia foi lou igoa.

3) O fea e aumai ai se Pepa Talosaga

E mafai ona maua pepa talosaga i nofoaga talafeagai nei:

- Nofoga Palota o Taulaga Uma (Satellite City Halls link)
- Falemeli a lunaite Setete
- Ofisa o laisene aveta'avale (na'o le resitalaina o tagata palota)
- Tele lala so'oupu a le Malo o le Setete o Hawaii (na'o le resitalaina o tagata palota)
- Faletusi Lautele
- Tusi Lafoga a le Setete o Hawaii
- Tusi Telefoni a Hawaii po'o le Hawaiian Telcom Yellow Pages (na'o le resitalaina o tagata palota, pe a uma le Ta'iala mo Sauniuniga mo Faalavelave Matuiā)

Se'i vagana ai ofisa laisene aveta'avale (o lo'o aofia ai se pepa resitala o tagata palota e fai ma vaega o le talosaga mo laisene aveta'avale), o nofoaga o lo'o lisi atu i luga o le a le aoina mai tusi talosaga ua mae'a.

Fa'amolemole lafo sa'o pepa fa'atumu ua mae'a i le Ofisa o le Failautusi o le Aai a le Vaega o Faiga Palota:

Vaega o Faiga Palota
Ofisa o le Failautusi o le Taulaga
530 S. King St, 100
Honolulu, Hawaii 96813



Fa'atonuga ma Filifiliga o Palota

O tagata palota uma, e resitala lelei i le aso e gata ai le resitalaina o tagata palota, o le a lafoina i le meli se palota.

Palota i Meli

O le a lafo atu i tagata palota se pepa palota e iai mea nei:

- Se palota
- O lima faalilolilo po'o se teutusi (samāsama)
- Teutusi Fa'afo'i Palota; ma
- Fa'atonuga palota eseese

Laasaga mo le faia o se Palota; ma

1. Toe lloilo itu uma e lua o le palota ma mea uma o lo'o fa'apipi'iina. Faailoga muamua au filifiliga i se isi pepa.
2. Palota e ala i le fa'a pogisaina o le tulaga palota i tafatafa o lau filifiliga atoa i se peniutu lanu uliuli pe lanumoana.
3. Tuu le palota ua palotaina i totonu o le lima faalilolilo lanu samāsama po o le teutusi ma faamaufaailoga le teutusi
4. Tuu le lima faalilolilo samāsama po o le teutusi i totonu o le Teutusi o le Toe Faafo'i Mai o Palota (tali fa'apisinisi). Faamaufaailoga le teutusi.
5. Afai na e mauaina ni fa'atonuga e tu'uina atu se kopi o fa'amatalaga fa'atasi ma lau palota ua palotaina, fa'apipi'i kopi o fa'amatalaga.
6. Faamaufaailoga le teutusi.
7. SAINI le fa'amatalaga fa'amaonia i le teutusi o le Toe Fa'afo'i mai o Palota. E LĒ faitauina lau palota pe a lē sainia le fa'amatalaga fa'amaonia.

Meli atu le teutusi i le taimi fetau i ina ia mauaina ae lei pasi le 7:00 p.m. i le afiafi o le Aso Palota. E tusa ai ma tulafono a le setete, so'o se palota i le meli e maua pe a pasi le 7:00 p.m. i le afiafi o le Aso Palota, o le a lē faitauina

Palota ile Meli Faaleagaina

O mea sesē e mafai ona tupu. Faamolemole aua le fa'aaogaina le lipine fa'asa'o papa'e po'o vai, po'o fa'amatalaga e fa'asa'o ai mea sesē i lau palota. Afai e te faia se mea sesē, valaau le matou ofisa mo se isi pepa palota. Fa'alagolago i tulaga (faata'ita'iga. taimi, ma isi) o le a fautuaina e le matou aufaigaluega se fofō talafeagai e mafai ai ona e faia lau palota. Ae ui i lea, ia nofouta e faalagolago i le taimi ma tulaga, o le fofō e mafai ona aofia ai le fa'aalia patino e maua mai ai se isi pepa palota po'o le palota i se tasi o Nofoga o Au'aunaga mo Tagata Palota.

Palota e ala i le Palota a o Toesea (a'o alu ese mai le fale)

Pepa Talosaga e Tasi Faavaitaimi – Fa'aaoga le pepa talosaga lea pe afai o le a e alu ese mai lou aiga ile vaitaimi ole palota. O le a lafoina atu lau palota i le tuatusi le tumau e te tu'uina atu. So'otaga mo Pepa Talosaga Fa'avaitaimi [Seasonal Application link](#)

Nofoga Autu o Au'aunaga mo Tagata Palota

Mo se vaitaimi o le sefulu (10) aso pisinisi a'o lumana'i ma aofia ai Aso Palota ta'itasi, e mafai e tagata palota ona faia se palota i se Nofoga Autu mo Au'aunaga Palota. I lenei vaitau, o tagata e le'i resitalaina e palota e mafai ona resitala e palota ma palota Va'ai le lisi o nofoaga o Au'aunaga mo Tagata Palota ma aso ua saunia **O le a lē maua nofoaga palota mo Aso Faiga Palota Masani**



O tagata palota uma ua resitala e palota i le Aai & Itumalo o Honolulu e mafai ona palota i soo se nofoaga, e tusa lava po o le a le tofi faale-itumalo.

Ina ia faafaigofie le faiga palota, faamolemole ia manatua e aumai se Pepa Faailoa (I.D.) i le Nofoga o Au'aunaga mo Tagata Palota.

O ituaiga Pepa Faailoa (ID) e taliaina e aofia ai

- Laisnene aveta'avale a le Setete
- Pepa fa'ailoa a le Malo
- Pepa Faailoa(ID) a le Militeri a Amerika
- Se pili aoga o lo'o iai nei, fa'amatalaga a le faletupe, siaki a le mālō, pepa a le mālō, po'o se siaki totogi o lo'o i ai lou igoa ma lou tuatusi o le taimi nei

I lou taunu'u atu i le Nofoga o Au'aunaga mo Tagata Palota, e mafai ona matou fa'atonuina oe e fa'atumu se pepa toe resitala pe a mana'omia

Afai e leai sau pepa fa'ailoa e taliaina, matou te fesili atu ia te oe mo nisi fa'amatalaga e fa'amaonia ai lou fa'asinomaga. O lenei faagasologa o le a umi se taimi faaopoopo

Nofoga e Tu'u ai

E mafai e tagata palota ona lafoa'i a latou palota i nofoaga ua atofaina mo pusa faapa'u palota, o le a tatala ile aso sefuluvalu a'o lumana'i ai, se'ia le sili atu ile 7:00 i le afiafi o le Aso Palota. Va'ai le lisi o Nofoga o Tu'u ma aso ua saunia.

Faiga Palota

E tusa ai ma le Tulafono Toeiloilo a Hawaii §11-132, e faasino i totonu o le nofoaga atofaina e lua selau futu mai le nofoaga o so'o se nofoaga autu o au'aunaga a tagata palota, nofoaga e teu ai, ma ona meafaigaluega, ona fa'aalia pe tufatufaina ai o pepa fa'aupuga, fa'ailoga, po'o isi mea o fa'aupuga mo le fa'amoemoe e talosagaina ai palota ma po'o le fa'asagatau i so'o se tagata po'o se vaega fa'aupufai po'o se tulaga i luga o se fesili o palota

Avanoa mo Tagata Palota

O Nofoga o Au'aunaga mo Tagata Palota e mafai ona fa'aaogaina e tagata e iai mana'oga fa'apitoa a le faale-tino po'o ala fa'apulega. E fa'aaogaina e Nofoga o Au'aunaga mo Tagata Palota masini palota e fa'atagaina ai tagata palota e i ai mana'oga fa'apitoa e palota tuto'atasi ai. So'o se tagata palota e mana'omia se fesoasoani e palota ona o le lē atoatoa o le tino, va'ai, po'o le fa'alogu, po'o le lē mafai ona faitau pe tusitusi, e mafai ona tu'uina atu i ai se fesoasoani e se tagata o le filifiliga a le tagata palota - e ese mai i le pule a le tagata palota, sooupu a le pule, po'o le sooupu o le iuni a le tagata palota (42 USC1973aa-6)

**Ofisa o le Failautusi o le Aai, TTY – 808-768-3848
(E leai ni valaau leo e tali mai ile numera lea)**



Fa'asilasilaga ma Fa'alēaogaina a le Tagata Palota

Faasilasilaga i Tagata Palota

Afai na e resitala lelei ete palota, o le a lafoina atu ia oe se pepa samasama o le Faasilasilaga o le Resitalaina o Tagata Palota i le masina o Aperila i le tausaga palota. E lafo atu fo'i le pepa i lea taimi ma lea taimi i tagata palota fou faato'a resitala ma i latou e toe resitala i le tausaga atoa o le palota

Soloia o le Resitalaina o le Tagata Palota

Afai e te le toe mana'o e avea oe ma tagata palota, e mafai ona e fa'alēaogaina lou resitala o se tagata palota. E mafai fo'i ona e fa'alēaogaina le resitalaina o le tagata palota o se tasi o lou aiga ua maliu. O le pepa fa'alēaogaina e mafai ona tu'uina atu i le Ofisa o le Failautusi o le Taulaga. Matou te fa'afetaia fa'amatalaga e fesoasoani ia i matou e fa'atumauiina le resitalaina o tagata palota. So'oga ([link](#)) mo le Fa'aleaogaina o Resitala o le Tagata Palota

[Cancellation of Voter Registration link](#)



Fesili e Fesiligia So'o

FAQ – Fa'af'o'iina o se Palota ua Palotaina

Q: O le a le taimi faagata e toe faafoi ai la'u palota ua palotaina

A: E mana'omia e le Tulafono a le Setete o palota ua palotaina e tatau ona maua i le itula e 7:00 p.m. i le afiafi (Taimi Faatulagaina Hawaii-HST) o le Aso Palota ina ia mafai ona faitau

Q: O a nisi filifiliga ou te maua mo le toe faafoiina o la'u palota i le meli

A: E mafai ona e tu'u lau palota ua palotaina i so'o se Nofoga Autu o Au'aunaga mo Tagata Palota po'o le Nofoga e Teu Ai pe afai e maua i le taimi e faagata ai o lo'o ta'ua i luga.

Q: E fa'afefea ona ou fa'asa'oina se mea sesē i la'u palota po'o la'u teutusi faafo'i

A: Fa'amolemole fa'afesoota'i le matou ofisa ile 808-768-3800 mo nisi faatonuga

Lisi o Fesili ma Tali (po'o FAQ) – Fa'amauina o Tagata Palota

Q: E tatau ona ou resitala ina ia mafai ai ona ou palota

A: Ioe. E mana'omia le resitalaina o tagata palota mo tagata palota fou

Q: O afea e tatau ai ona ou toe resitala e palota

A: E mana'omia lou toe resitala pe afai ua suia lou tuatusi ile mea o loo e nofo ai po'o lou tuatusi meli, pe ua sui lou igoa

Q: E mana'omia lou toe resitala pe afai ua suia lou tuatusi ile mea o loo e nofo ai po'o lou tuatusi meli, pe ua sui lou igoa

A: E mafai ona e resitala e palota ile 10 aso ae le'i faia le palota. O pepa talosaga mo le resitalaina o tagata palota e tatau ona fa'ailoga pe maua a'o le'i o'o i le aso e gata ai

Q: O a agavaa mo le resitalaina e palota
A: O tagata resitala e tatau ona avea ma Sitiseni Amerika, o se tagata nofomau i Hawaii, ma a itiiti o le 16 tausaga le matua (mua'i resitalaina)

Q: E faapefea ona ou iloa ua ou resitala e palota

A: Fa'asilasilaga o le Tagata Palota ma Fa'ailoaga o Fa'amaoniga o le Tuatusi (pepa samasama) e lafo ia Aperila i le tausaga palota. Ua lelei lou resitala e palota pe a e mauaina lenei pepa meli. E mafai fo'i ona e vala'au le Vaega o Faiga Palota ile 808-768-3800 mo le fa'amaoniga

Q: E mana'omia se tuatusi nofomau mo le resitalaina o tagata palota? Ae faapefea pe a leai sau tuatusi masani

A: E mana'omia se tuatusi nofomau mo le resitalaina o tagata palota? Ae faapefea pe a leai sau tuatusi masani

Q: E fa'atagaina a'u e palota pe afai o iai sa'u solitulafono

A: O se tagata palota ua fa'asala i se solitulafono, mai le taimi na fa'asala ai lea tagata se'ia o'o i le fa'amalolō mulimuli o le tagata, e le mafai ona palota i se palotaga. Ae peitai, afai e nofo vaavaaia se tagata po'o ua palola le tagata ina ua uma ona tuuina atu i le falepuipui, e mafai e le tagata ona resitala ma palota i le vaietimi o le nofo vaavaaia po o le palola.



Lisi o Fesili ma Tali (FAQ) FAQ – Palota a o Toesea

Q: Ae faapefea pe a ou alu ese i le vaitaimi o le palota

A: Fa'aoga le "Pepa Talosaga fa'avaitaimi" pe afai e te toesea mai lou aiga i le vaitaimi o le palotaga. O le a lafo lau palota i le tuatusi lē tumau e te tu'uina atu

Q: E tatau ona ou talosaga mo se palota a o toesea mo faiga palota taitasi

A: E mafai ona e talosagaina se palota a tagata e le auai, lafo i tuatusi eseese pe a mana'omia, mo le ulua'i palota ma le palota lautele i le taimi a e tasi



Fa'amatalaga Fa'afeso'ota'i Vaega o Faiga Palota a Honolulu

Faafesootai matou

O lo'o iai Vaega o Faiga Palota a Honolulu i

Fale Honolulu, Maota o le Taulaga

Ofisa o le Failautusi o le Taulaga

530 S. King St, 100

Honolulu, Hawaii 96813

Itulā ole Ofisa: 7:45 a.m. ile 4:30 p.m. Aso Gafua-Aso Faraile, e le aofia ai aso malolō a le Mālō.

Telefoni a le Vaega o Faiga Palota a Honolulu: (808) 768-3800

Vaega o Faiga Palota a Honolulu TTY (mo le fa'alogo po'o le tautala-faalētonu): (808) 768-3848



Lisi o Nofoga o Auaunaga mo Tagata Palota

Itulā o Galuega

Nofoga

Ulua'i Faiga Palota

Lulai 29, 2024 e o'o ia Aukuso 9, 2024
Aso Gafua e o'o ile Aso To'ona'i
8:00 a.m. ile 4:30 p.m.

Aukuso 10, 2024
7:00 a.m. to 7:00 p.m.

Faiga Palota Lautele

Oketopa 22, 2024 e o'o ia Novema 4, 2024
Aso Gafua e o'o ile Aso To'ona'i
8:00 a.m. ile 4:30 p.m.

Novema 5, 2024
7:00 a.m. to 7:00 p.m.

Tuamaota o le Fale a Honolulu
(po'o Honolulu Hale Courtyard)
530 South King Street
Honolulu, HI 96813

Potu Koneferenise ile Fale o Kapolei
(po'o Kapolei Hale Conference Rooms)
1000 Uluohia Street
Kapolei, HI 96707

Ulua'i Faiga Palota

Lulai 29, 2024 e o'o ia Aukuso 2, 2024
Aso Gafua e o'o ile Aso Faraile
11:00 a.m. ile 6:30 p.m.

Faiga Palota Lautele

Oketopa 22, 2024 e o'o ia Oketopa 26, 2024
Tuesday through Saturday
11:00 a.m. ile 6:30 p.m.

Paka a le Itumälö o Kaneohe (Potu Fono)
45-660 Keahala Road
Kaneohe, HI 96744

Ulua'i Faiga Palota

Aukuso 5, 2024 e o'o ia Aukuso 9, 2024
Aso Gafua e o'o ile Aso Faraile
11:00 a.m. ile 6:30 p.m.

Faiga Palota Lautele

'Oketopa 29, 2024 e o'o ia Novema 2, 2024
Tuesday through Saturday
11:00 a.m. ile 6:30 p.m.

George Fred Wright Wahiawa District Park
(Ceramic Room)
1129 Kilani Avenue
Wahiawa, HI 96786



Lisi o Nohoaga e Tu'u ai

Itulā o Galuega

Ulua'i Faiga Palota

Tatala i aso uma mai ia Iulai 23, 2024 e o'o i le 7:00 p.m. o Aukuso 10, 2024

Faiga Palota Lautele

Tatala i aso uma mai ia Oketopa 18, 2024 e oo i le 7:00 p.m. o Novema 5, 2024

Nohoaga

Waianae District Park
85-601 Farrington Highway
Waianae, HI 96792

Asing Community Park
91-1450 Renton Road
Ewa Beach, HI 96706

Bill Balfour Jr. Waipahu
District Park
94-230 Paiwa Street
Waipahu, HI 96797

Mililani Park and Ride
95-1101 Ukuwai Street
Mililani, HI 96789

Neal Blaisdell Park
98-319 Kamehameha
Highway
Aiea, HI 96701

Connie Chun Aliamanu
Neighborhood Park
4259 Lawehana Street
Honolulu, HI 96818

Kalihi Valley District Park
1911 Kamehameha IV Road
Honolulu, HI 96819

Sunset Beach
Recreation Center
59-540 Kamehameha
Highway
Haleiwa, HI 96712

Kaneohe District Park
45-660 Keaahala Road
Kaneohe, HI 96744

Kailua District Park
21 South Kainalu Drive
Kailua, HI 96734

Hawaii Kai Park and Ride
240 Keahole Street
Honolulu, HI 96825

Waialae Iki
Neighborhood Park
4888 Analii Street
Honolulu, HI 96821

Kanewai Community Park
2695 Dole Street
Honolulu, HI 96822



Lisi o Nofoga e Tu'u ai (fa'aauau)

Itulā o Galuega

Nofoga

Ulua'i Faiga Palota

Tatala i aso uma mai ia Iulai 23, 2024 e o'o i le 7:00 p.m.
o Aukuso 10, 2024

Honolulu Hale
530 South King Street
Honolulu, HI 96813

Faiga Palota Lautele

Tatala i aso uma mai ia Oketopa 18, 2024 e oo i le 7:00
p.m. o Novema 5, 2024

Kapolei Hale
1000 Uluohia Street
Kapolei, HI 96707



Pepa Talosaga mo Tagata Palota (Ta'iala o Fa'aliliuga)

Vaega	English	Samoan
	Registration online at elections.hawaii.gov	Le Resitalaina i luga ole laina ile elections.hawaii.gov
1	<p>Do you meet these qualifications:</p> <p>Are you a citizen of the United States of America?</p> <p>Are you at least 16 years of age? (Must be 18 to vote)</p> <p>Are you a resident of the State of Hawaii?</p> <p>If you answered "No" to any of the above, DO NOT complete the form.</p> <p>The residence stated in this affidavit is not simply because of my presence in the State, but was acquired with the intent to make Hawaii my legal residence with all the accompanying obligations therein.</p>	<p>E te ausia agavaa nei:</p> <p>O oe o se sitiseni o le lunaite Setete o Amerika?</p> <p>O e lē laititi ifo i le 16 tausaga o lou matua? (E tatau ona 18 tausaga e palota ai)</p> <p>O oe o se tagata nofomau i le Setete o Hawaii?</p> <p>Afai na e tali "Leai" i so'o se mea o lo'o i luga, AUA LE fa'atumuina le pepa.</p> <p>O le nofoaga o lo o taua i totonu o lenei tautinoga e le faapea ona o lo'u i ai i le Setete, ae na maua ma le faamoemoe e avea Hawaii ma o'u nofoaga faaletulafono faatasi ai ma matafaioi uma o loo i ai.</p>
2	<p>Last Name</p> <p>First Name</p> <p>Middle Initial (M.I.)</p> <p>Suffix (Jr, II)</p>	<p>Faai'u</p> <p>Igoa Muamua</p> <p>Uluai Mataitusi o le Igoa Ogototonu</p> <p>Mataitusi Faapoopo (Jr, II)</p>
3	<p>HI Driver License or HI State ID Number (if you do not have either, complete box 3b)</p>	<p>Laisene Aveta'avale HI po'o le Numera Faailoa (ID) a le Setete o HI (afai e leai sau laisene, fa'atumu pusa 3b)</p>
3B	<p>I do not have a HI Driver License, HI State ID, or SSN</p>	<p>E leai sa'u Laisene Aveta'avale HI, ID a le Setete o HI, po'o le Numera o le Saogalemu</p>



Vaega	English	Samoan
4	Date of Birth Phone Number Email	Aso Fanau Numera o le Telefoni Imeli
5	<p>If you are disabled and unable to read standard print, would you like to receive an electronic ballot?</p> <p>Yes, I am disabled and unable to read standard print and would like to request an electronic ballot to be sent to my email indicated on this application</p> <p>Applicant must provide an email address to receive an electronic ballot.</p>	<p>Afai e lē atoatoa lou malosi ma e lē mafai ona e faitau i lomiga masani, ete mana’o e maua se palota fa’aeletonika?</p> <p>loe, e lē atoatoa lo’u malosi ma ua lē mafai ona ou faitau i lomiga masani ma ou te mana’o e talosagaina se palota faaeletonika e lafo i la’u imeli o lo’o fa’aalia i luga o lenei pepa talosaga</p> <p>E tatau i le tagata talosaga ona tuuina atu se tuatusi imeli e maua mai ai se palota faaeletonika.</p>
6	<p>Residence Address (P.O. Box, R.R., S.R., are not acceptable)</p> <p>Mailing Address in Hawaii</p> <p>Same as Residence Address</p> <p>Apt. Number</p> <p>City</p> <p>Zip Code</p> <p>If your residence does not have a street address, describe the location (cross streets, landmarks).</p>	<p>Tuatusi Nofomau (Pusa o le Falemeli R.R., S.R., e lē taliaina)</p> <p>Tuatusi Meli i Hawaii</p> <p>E Tutusa ma le Tuatusi Nofomau</p> <p>Fale Mautotogi Numera</p> <p>Aaai</p> <p>Numera a le Setete (po’o Zip Code)</p> <p>Afai e leai se tuatusi o lou fale, fa’amatala le nofoaga (auala o loo fesagai, fa’ailoilo o le fanua).</p>
7	<p>Are you registered to vote in another state?</p> <p>Yes, I hereby authorize cancellation of my previous registration at the following address, county, state, and zip code.</p>	<p>Ua e resitala e te palota i se isi setete?</p> <p>loe, ou te faatagaina le faalēaogāina o la’u resitala muamua i le tuatusi o lo’o mulimuli mai, itumalo, setete, ma le numera a le Setete.</p>



Vaega

English

Samoan

8

Warning: Any person who knowingly furnishes false information may be guilty of a Class C felony.

I hereby swear (or affirm) that all information furnished on this application is true and correct.

If you are unable to sign, mark the signature line and have a witness provide their signature, address and phone number.

Sign Here

Date

Office Use Only

ID Number

Location Code

Document Number

Notice: The identity of the voter registration agency through which any voter was registered shall not be publicly disclosed. A person's declination to register to vote is also confidential and is used for voter registration purposes only (National Voter Registration Act of 1993).

Lapataiga: So'o se tagata na te tu'uina atu ma le iloa fa'amatalaga sesē e ono nofosala i se solitulafono C.

Ou te tauto (pe fa'amaonia) o fa'amatalaga uma ua tu'uina atu i lenei pepa talosaga e moni ma sa'o.

Afai e le mafai ona e saina, maka le laina saina ma tuu atu i se molimau e tuuina mai a latou saina, tuatusi ma le numera o le telefoni.

Saini i'i

Aso

Na o le Ofisa e Fa'aoga

Numera Faailoa (ID)

Numera (Code) o le Nofoga

Numera o le Pepa

Fa'aaliga: O le fa'aalobaina o le lala sooupu o le resitalaina o tagata palota o loo resitala ai le tagata palota e le tatau ona fa'aalobaina fa'alaua'itele. O le tete'e o se tagata e resitala e palota e le faalauaiteina ma e fa'aogaina mo na'o le resitalaina o tagata palota (Tulafono Resitalaina o Tagata Palota a le Atunuu 1993).

Hawaii Voter Registration Application

Please print clearly in black ink.

Register online at elections.hawaii.gov

1 **Do you meet these qualifications:**

Are you a citizen of the United States of America?	<input type="checkbox"/> Yes	<input type="checkbox"/> No
Are you at least 16 years of age? (Must be 18 to vote)	<input type="checkbox"/> Yes	<input type="checkbox"/> No
Are you a resident of the State of Hawaii?	<input type="checkbox"/> Yes	<input type="checkbox"/> No

If you answered "No" to any of the above, DO NOT complete this form.

The residence stated in this affidavit is not simply because of my presence in the State, but was acquired with the intent to make Hawaii my legal residence with all the accompanying obligations therein.

2

Last Name	First Name	M.I.	Suffix (Jr., II)
-----------	------------	------	------------------

3 HI Driver License or HI State ID Number
If you do not have either, complete box 3b.

3b

<input type="checkbox"/> I do not have a HI Driver License or HI State ID Provide the last 4 digits of your Social Security Number.	<input type="text"/>	<input type="text"/>	<input type="text"/>	<input type="text"/>
<input type="checkbox"/> I do not have a HI Driver License, HI State ID, or SSN				

4

Date of Birth	Phone Number	Email
---------------	--------------	-------

5 If you are disabled and unable to read standard print, would you like to receive an electronic ballot?

Yes. I am disabled and unable to read standard print and would like to request an electronic ballot be sent to my email indicated on this application. **Applicant must provide an email address to receive an electronic ballot.**

6

Residence Address (P.O. Box, R.R., S.R., are <u>not</u> acceptable)	Apt. Number	City	Zip Code
Mailing Address in Hawaii <input type="checkbox"/> Same as Residence Address	Apt. Number	City	Zip Code

If your residence does not have a street address, describe the location (cross streets, landmarks).

7 **Are you registered to vote in another state?** Yes. I hereby authorize cancellation of my previous registration at the following address, county, state, and zip code.

Warning: Any person who knowingly furnishes false information may be guilty of a Class C felony.
I hereby swear (or affirm) that all information furnished on this application is true and correct.

8

SIGN HERE ▶

<div style="border: 1px solid black; height: 80px; width: 100%;"></div>	Date
---	------

If you are unable to sign, mark the signature line and have a witness provide their signature, address, and phone number.

OFFICE USE ONLY	ID Number	Location Code CC22	Document Number	
------------------------	-----------	------------------------------	-----------------	---

Notice: The identity of the voter registration agency through which any voter was registered shall not be publicly disclosed. A person's declination to register to vote is also confidential and is used for voter registration purposes only (National Voter Registration Act of 1993).



Hawaii Votes by Mail

All registered voters will be automatically sent a ballot to their mailing address in Hawaii associated with their voter registration.

First time Voter Mailing this Application

If you are registering to vote for the first time in the State of Hawaii, mailing this application, and do not have a Hawaii Driver License, Hawaii State ID, or the last 4-digits of your Social Security Number, you are required to provide proof of identification. Proof of identification includes a copy of:

- A current and valid photo identification; or
- A current utility bill, bank statement, government check, paycheck, or other government document that shows your name and address.

Submitting Your Application

County of Hawaii	County of Kauai
25 Aupuni St. #1502 Hilo, HI 96720	4386 Rice St. #101 Lihue, HI 96766
County of Maui	City & County of Honolulu
200 S. High St. Wailuku, HI 96793	530 S. King St. #100 Honolulu, HI 96813

Language Assistance

Para kadagiti naipatarus a materiales a mainaig iti eleksion wenno tulong iti lengguahe tapno makompletoyo daytoy nga aplikasion, awagan ti Opisina Dagiti Eleksion (**Office of Elections**).

Para sa mga isinalin na babasahin tungkol sa eleksyon o upang makatanggap ng tulong sa wika sa pagkumpleto ng aplikasyon na ito, makipag-ugnayan sa Tanggapan ng mga Eleksyon (**Office of Elections**).

若想獲得電子檔的翻譯材料，或者需要協助填表事宜，請聯繫選舉辦公室 (**Office of Elections**)。

Contact Us

For information about registering to vote, contact your **County Elections Division**.

County of Hawaii (808) 961-8277
County of Maui..... (808) 270-7749
County of Kauai..... (808) 241-4800
City & County of Honolulu.. (808) 768-3800

For additional voting information, contact the **Office of Elections**.

Phone: (808) 453-VOTE (8683)
Toll Free: 1-800-442-VOTE (8683)
TTY: (808) 453-6150
Toll Free TTY: 1-800-345-5915
Email: elections@hawaii.gov
Website: elections.hawaii.gov



Voter Registration Application

This application can be used for:

- First time registration
- Name change
- Address change
- Signature update





Pepa Talosaga mo Tagata Hawaii e Toesea (Ta'iala o Fa'aliliuga)

Vaega	English	Samoan
	This application will authorize your ballot to be mailed to a temporary alternate address and will be valid only for the election year in which it was submitted.	O lenei talosaga o le a fa'atagaina ai lau palota e lafo i se tuatusi lē tumau ma o le a aoga mo na'o le tausaga palota na tu'uina atu ai.
	Please print clearly in black ink.	Fa'amolemole lolomi manino i se peniutu uliuli.
1	<p>I am requesting an absentee ballot for the following election(s):</p> <p>Primary Only</p> <p>General Only</p> <p>Primary & General</p> <p>Special</p>	<p>O lo'o ou talosagaina se palota a o toesea mo le palota nei:</p> <p>Na o le Ulua'i Palota</p> <p>Na o le Palota Fa'alauaitele</p> <p>Uluai Palota ma le Palota Fa'alauaitele</p> <p>Faapitoa</p>
2	<p>Last Name</p> <p>First Name</p> <p>M.I.</p> <p>Suffix (Jr., II)</p>	<p>Fa'ai'u</p> <p>Igoa Muamua</p> <p>Mata'itusi o le Igoa Ogototonu</p> <p>Mata'itusi Faaopopo (Jr., II)</p>
3	HI Driver License or HI State ID Number (if you do not have either, complete box 3b)	Laisene Aveta'avale HI po'o le Numera Faailoa (ID) a le Setete o HI (afai e leai sau laisene poo le ID, fa'atumu pusa 3b)
3B	<p>I do not have a HI Driver License or HI State ID</p> <p>Provide the last 4 digits of your Social Security Number</p> <p>I do not have a HI Driver License, HI State ID, or SSN</p>	<p>E leai so'u Laisene Aveta'avale HI po'o le Pepa Faailoa (ID) a le Setete o HI</p> <p>Tu'u mai numera mulimuli e 4 o lau Numera o le Saogalemu</p> <p>E leai sa'u Laisene Aveta'avale a HI, Pepa Faailoa (po'o le ID) a le Setete o HI, po'o le Numera o le Saogalemu</p>



Vaega	English	Samoan
4	Date of Birth Phone Number Email	Aso Fanau Numera o le Telefoni Imeli
5	If you are disabled and unable to read standard print, would you like to receive an electronic ballot? Yes, I am disabled and unable to read standard print and would like to request an electronic ballot to be sent to my email indicated on this application	Afai e lē atoatoa lou malosi ma e lē mafai ona e faitau i lomiga masani, ete mana’o ina ia e maua se palota faaeletonika? Ioe, ua ou lē atoatoa lo’u malosi ma ua lē mafai ona ou faitau i lomiga masani ma ou te mana’o e talosagaina se palota faaeletonika e lafo i la’u imeli o lo’o fa’aalia i luga o lenei talosaga
	Applicant must provide an email address to receive an electronic ballot.	E tatau i le tagata talosaga ona tuuina atu se tuatusi imeli e maua ai se palota faaeletonika.
6	Residence Address (P.O. Box, R.R., S.R., are not acceptable) Mailing Address in Hawaii Same as Residence Address Apt. Number City Zip Code If your residence does not have a street address, describe the location (cross streets, landmarks).	Tuatusi Nofomau (Pusa Falemeli R.R., S.R., e lē taliaina) Tuatusi Meli i Hawaii Tutusa ma le Tuatusi Nofomau Fale Mautotogi Numera Aai Numera a le Setete Afai e leai se tuatusi o lou fale, fa’amatala le nofoaga (auala e fesagai, fa’ailoilo o le fanua).
7	Address to Mail Primary Ballot Hold for arrival Address to Mail General Ballot Hold for arrival	Faatuatusi ile Uluai Palota i le Meli Taofi mo le taunuu mai Faatuatusi ile Palota Fa’alauaitete ile Meli Taofi mo le taunuu mai



Vaega	English	Samoan
-------	---------	--------

8

Warning: Any person who knowingly furnishes false information may be guilty of a Class C felony.

Lapataiga: So’o se tagata na te tu’uina atu ma le iloa fa’amatalaga sesē e ono nofosala i se solitulafono C.

I hereby swear (or affirm) that all information furnished on this application is true and correct.

Ou te tauto atu (pe fa’amaonia) o fa’amatalaga uma ua tu’uina atu i leni talosaga e moni ma sa’o.

If you are unable to sign, mark the signature line and have a witness provide their signature, address and phone number.

Afai e le mafai ona e saina, maka le laina saina ma tuu atu i se molimau e tuuina mai a latou saina, tuatusi ma le numera o le telefoni.

Sign Here

Saini i’i

Date

Aso

Office Use Only

Na o le Ofisa e Fa’aogaina

Primary Mailed

Meli le Uluai Palota

Primary Received

Maua le Uluai Palota

Remarks

Fa’amatalaga

General Mailed

Meli le Palota Fa’alauaitete

General Received

Maua le Palota Faalauaitete

D/P

Aso na Lafo ai (po’o D/P)

Document Number

Numera o le Pepa

Notice: The identity of the voter registration agency through which any voter was registered shall not be publicly disclosed. A person’s declination to register to vote is also confidential and is used for voter registration purposes only (National Voter Registration Act of 1993).

Fa’aaliga: O le Faasinomaga o le lala so’oupu e resitalaina o tagata palota lea e resitala ai soo se tagata palota e le tatau ona fa’ailoa fa’alaua’ite. O le tete’e o se tagata e resitala e palota e le faalauaiteteina ma e faaogaina mo na’o le resitalaina o tagata palota ((Tulafono o le Resitalaina o Tagata Palota a le Atunuu 1993).

Hawaii Absentee Ballot Application

This application will authorize your ballot to be mailed to a temporary alternate address and will be valid only for the election year in which it was submitted.

Please print clearly in black ink.

1 I am requesting an absentee ballot for the following election(s):
 Primary Only General Only Primary & General Special

2 Last Name _____ First Name _____ M.I. _____ Suffix (Jr., II) _____

3 HI Driver License or HI State ID Number
If you do not have either, complete box 3b.

3b I do not have a HI Driver License or HI State ID
Provide the last 4 digits of your Social Security Number. [][][][]

I do not have a HI Driver License, HI State ID, or SSN

4 Date of Birth _____ Phone Number _____ Email _____

5 If you are disabled and unable to read standard print, would you like to receive an electronic ballot?
 Yes. I am disabled and unable to read standard print and would like to request an electronic ballot be sent to my email indicated on this application. **Applicant must provide an email address to receive an electronic ballot.**

6 Residence Address (P.O. Box, R.R., S.R., are not acceptable) _____ Apt. Number _____ City _____ Zip Code _____

Mailing Address in Hawaii Same as Residence Address Apt. Number _____ City _____ Zip Code _____

If your residence does not have a street address, describe the location (cross streets, landmarks).

7 Address to Mail Primary Ballot Hold for arrival Address to Mail General Ballot Hold for arrival

Warning: Any person who knowingly furnishes false information may be guilty of a Class C felony.

I hereby swear (or affirm) that all information furnished on this application is true and correct.

8 **SIGN HERE** ▶ _____ Date _____

If you are unable to sign, mark the signature line and have a witness provide their signature, address, and phone number.

OFFICE USE ONLY	Primary Mailed	Primary Received	Remarks		<input type="checkbox"/> HRS §11-20
	General Mailed	General Received	Clerk	D/P	Document Number



Notice: The identity of the voter registration agency through which any voter was registered shall not be publicly disclosed. A person's declination to register to vote is also confidential and is used for voter registration purposes only (National Voter Registration Act of 1993).

Notice

You must be registered to vote in Hawaii to receive an absentee ballot. Confirm your voter registration or register to vote online at elections.hawaii.gov.

You may also submit a Voter Registration Application.

Submitting Your Application

County of Hawaii **County of Kauai**
25 Aupuni St. #1502 4386 Rice St. #101
Hilo, HI 96720 Lihue, HI 96766

County of Maui **City & County of Honolulu**
200 S. High St. 530 S. King St. #100
Wailuku, HI 96793 Honolulu, HI 96813

Deadline to Submit Application

Applications must be received by your County Elections Division no later than **7 days before Election Day**.

Language Assistance

Para kadagiti naipatarus a materiales a mainaig iti eleksion wenno tulong iti lengguahe tapno makompletoyo daytoy nga aplikasion, awagan ti Opisina Dagiti Eleksion (**Office of Elections**).

Para sa mga isinalin na babasahin tungkol sa eleksyon o upang makatanggap ng tulong sa wika sa pagkumpleto ng aplikasyon na ito, makipag-ugnayan sa Tanggapan ng mga Eleksyon (**Office of Elections**).

若想獲得電子檔的翻譯材料，或者需要協助填表事宜，請聯繫選舉辦公室 (**Office of Elections**)。


Contact Us

For information about registering to vote, contact your **County Elections Division**.

County of Hawaii..... (808) 961-8277
County of Maui..... (808) 270-7749
County of Kauai..... (808) 241-4800
City & County of Honolulu.. (808) 768-3800

For additional voting information, contact the **Office of Elections**.

Phone: (808) 453-VOTE (8683)
Toll Free: 1-800-442-VOTE (8683)

 **TTY:** (808) 453-6150
Toll Free TTY: 1-800-345-5915

Email: elections@hawaii.gov
Website: elections.hawaii.gov

Absentee Ballot Application

You must be registered to vote in Hawaii to receive an absentee ballot.

This application will authorize your ballot to be mailed to a temporary alternate address and will be valid only for the election year in which it was submitted.





Talosaga mo le Tagata e Palota i totonu o le Fale Palota (Ta'iala o Fa'aliliuga)

Vaega	English	Samoan
	Please print clearly in black ink. I hereby swear (or affirm) that the following information is true and correct:	Fa'amolemole lolomi manino ile peniutu uliuli. Ou te tauto atu (pe fa'amaonia) o fa'amatalaga nei e moni ma sa'o:
	Office Use Only Voter ID No.	Na o le Ofisa e Fa'aogaina Numera o le Pepa Faailoa (ID) a le Tagata Palota
1	HI Driver's License Number HI State ID Number Social Security Number's last 4-digits	Numera Laisene Aveta'avale a HI Numera Pepa Faailoa (ID) a le Setete o HI Numera mulimuli e 4 o le Numera Saogalemu
2	Date of Birth (mm/dd/yy)	Aso Fanau (masina/aso/tausaga)
3	Last Name First Name M.I.	Fa'ai'u Igoa Muamua Mata'itusi o le Igoa Ogototonu
4	Residence Address (Must be completed. P.O. Box, R.R., S.R., are not acceptable) Apt. Number City/Town Zip Code	Tuatusi Nofomau (E ao ona faatumu. Pusa Falemeli. R.R., S.R., e le taliaina) Fale Mautotogi Numera Taulaga/Aai Numera a le Setete
5	Mailing Address in Hawaii (Street address or PO Box) Same as Residence Address City/Town Zip Code	Tuatusi Meli i Hawaii (tuatusi o le auala po'o le Numera a le Falemeli) Tutusa ma le Tuatusa Nofomau Taulaga/Aai Numera o le Setete



Vaega	English	Samoaan
6	<p>If no street address, describe location of residence (Leave blank if #4 is completed).</p> <p>City/Town</p> <p>Zip Code</p>	<p>Afai e leai se tuatusi auala, fa'amatala le nofoaga o lo'o nofo ai (aua le fa'atumuina pe a mae'a le #4).</p> <p>Taulaga/Aai</p> <p>Numera a le Setete</p>
	<p>Warning: Any person who knowingly furnishes false information may be guilty of a Class C felony.</p>	<p>Lapataiga: So'o se tagata na te tu'uina atu ma le iloa fa'amatalaga sesē e ono nofosala i se solitulafono C</p>
7	<p>Same Day/Election Day Voter Registration Affidavit or Voter Info Update</p> <p>I hereby swear (or affirm) that:</p> <p>For Federal, State, and County Elections:</p>	<p>Aso e tasi/Ta'utinoga Resitalaina o Tagata Palota i le Aso Faiga Palota po'o Fa'amatalaga a le Tagata Palota ua Fa'afouina</p> <p>Ou te tauto atu (pe faamaonia) e faapea:</p> <p>Mo Faiga Palota Feterale, Setete, ma Itumālō:</p>
A	<p>I am a citizen of the United States of America (Non-U.S. citizens including U.S. nationals do not qualify)</p> <p>Yes / No</p>	<p>O a'u o se Sitiseni o le Lunaite Setete o Amerika (Tagata lē sitiseni Amerika faapea ma tagatanuu Amerika e le agavaa)</p> <p>loe/Leai</p>
B	<p>I am at least 16 years of age and I understand that I must be 18 years old by election day to vote</p> <p>Yes / No</p>	<p>E le itiiti ma le 16 o'u tausaga ma ou te malamalama e tatau ona 18 ou tausaga i le aso palota e palota ai</p> <p>loe/Leai</p>
C	<p>I am a resident of the State of Hawaii</p> <p>Yes / No</p>	<p>O a'u o se tagata nofomau i le Setete o Hawaii</p> <p>loe/Leai</p>
D	<p>I have not and will not vote at any other voter service center for this election, and I have not and will not cast any other ballot for this election: and</p>	<p>Ou te le'i palota ma o le a ou lē palota i so'o se isi nofoaga autu o au'unaga a tagata palota mo lenei faiga palota, ma ou te le'i faia ma o le a ou lē faia se isi palota mo lenei faiga palota: ma</p>



Vaega	English	Samoan
E	<p>I acknowledge that providing false information may result in a class C felony, punishable by a fine not exceeding \$1,000 or imprisonment not exceeding five years, or both.</p> <p>Signature</p> <p>Date</p>	<p>Ou te fa'aילוa o le tu'uina atu o fa'amatalaga sesē e ono tula'i mai ai se solitulafono C i solitulafono mamafa, e mafai ona fa'asala ai se sala tupe e lē sili atu i le \$1,000 pe fa'asala fo'i i le toese e le silia i le lima tausaga, pe fa'asala fo'i i faasalaga uma e lua.</p> <p>Saini</p> <p>Aso</p>
8	<p>Read and Sign ONLY Upon Receipt of Your Ballot</p> <p>I hereby swear (or affirm) that: 1) I am the person named above: 2) I am requesting an in-person ballot for myself and no other; and 3) all information furnished on this application is true and correct.</p> <p>Signature</p> <p>Date</p>	<p>Faitau ma Saini NA O le Taimi e Maua ai o Lau Palota</p> <p>Ou te tauto atu (pe faamaonia) e faapea: 1) O a'u o le tagata o lo'o ta'ua i luga: 2) O lo'o ou talosagaina se palota mo a'u lava ma e leai se isi; ma 3) o fa'amatalaga uma ua tu'uina atu i lenei talosaga e moni ma sa'o.</p> <p>Saini</p> <p>Aso</p>
	<p>If you are unable to sign, mark the signature area and have a witness provide signature, address and phone number below.</p> <p>Witness Signature</p> <p>Date</p> <p>Address</p> <p>Phone No.</p>	<p>Afai e lē mafai ona e saini, maka le vaega e saini ai ma fai i se molimau e saini, tuatusi ma le numera o le telefoni i lalo.</p> <p>Saini a le Molimau</p> <p>Aso</p> <p>Tuatusi</p> <p>Numera o le Telefoni.</p>



Vaega	English	Samoan
District/Precinct		Itumalo/Pitonu'u
Clerk		Failautusi
For Office Use Only		Na o le Ofisa e Fa'aaogaina
Location Code		Numera o le Nofoaga
	<p>Notice: The identity of the voter registration agency through which any voter was registered shall not be publicly disclosed. A person's declination to register to vote is also confidential and is used for voter registration purposes only (National Voter Registration Act of 1993).</p>	<p>Fa'aaliga: O le faasinomaga o le lala sooupu e lesitala ai tagata palota lea e resitala ai so'o se tagata paloga, e le tatau ona fa'ailoa fa'alaua'itele. O le tete'e o se tagata e lesitala e palota e le faalauaiteleina ma e fa'aaogaina mo na'o le resitalaina o tagata palota (Tulafono o le Resitalaina o Tagata Palota a le Atunuu 1993).</p>

Application for In-Person Ballot

Important: Print clearly in dark ink I hereby swear (or affirm) that the following information is true and correct:		<i>Office Use Only</i> Voter ID No.	
1	HI Driver's License Number, HI State ID Number or Social Security Number's last 4-digits	2	Date of Birth (mm/dd/yy)
3	Last Name	First Name	M.I.
4	Residence Address (Must be completed. P.O. Box, R.R., S.R. are not acceptable)	Apt. No.	City/Town Zip
5	Mailing Address in Hawaii (Street address or P.O. Box)	City/Town	Zip
6	If no street address, describe location of residence (Leave blank if box #4 is completed)	City/Town	Zip

Warning: Any person who knowingly furnishes false information may be guilty of a class C felony.

Same Day / Election Day Voter Registration Affidavit OR Voter Info Update

I hereby swear (or affirm) that:
For Federal, State, and County Elections:

A. **I am a citizen of the United States of America** YES NO
(Non-U.S.citizens including U.S. nationals do not qualify).

B. **I am at least 16 years of age and I understand that I must be 18 years old by election day to vote** YES NO

C. **I am a resident of the State of Hawaii** YES NO
(The residence stated in this affidavit is not simply because of my presence in the State, but that the residence was acquired with the intent to make Hawaii my legal residence with all the accompanying obligations therein...)

D. **I have not and will not vote at any other polling place for this election, and I have not and will not cast any other ballot for this election; and**

E. **I acknowledge that providing false information may result in a class C felony, punishable by a fine not exceeding \$1,000 or imprisonment not exceeding five years , or both.**

Signature	Date
-----------	------

Read and Sign ONLY Upon Receipt of Your Ballot

I hereby swear (or affirm) that: 1) I am the person named above; 2) I am requesting an in-person ballot for myself and no other; and 3) all information furnished on this application is true and correct.

Signature	Date
-----------	------

If you are unable to sign, mark the signature area and have a witness provide signature, address and phone number below.

Witness Signature _____ Date _____

Address _____ Phone No. _____

DISTRICT/PRECINCT	CLERK	FOR OFFICE USE ONLY	I.D. No.	VSCH / VSCK / EDRH / EDRK	Location Code	98
-------------------	-------	---------------------	----------	----------------------------------	---------------	-----------



Nofoaga o Au'aunaga mo Tagata Palota FAQ (po'o lisi o fesili ma tali):

RESITALAINA O LE TAGATA PALOTA

O le resitalaina o tagata palota e mana'omia mo tagata palota fou. O le taimi lava e te resitala ai e palota, e te le tau toe resitala mo palota taitasi. E mana'omia le toe resitalaina pe afai ua e siitia pe suia faale-tulafono lou igoa.

O tagata resitala e tataua ona avea ma Sitiseni Amerika, o se tagata nofomau i Hawaii, ma a itiiti o le 16 tausaga le matua (mua'i resitalaina). Faatasi ai ma lau tusi talosaga, fa'amolemole tu'u mai se ata faailoa (ID) o lo'o i ai nei ma aoga, tusifolau po'o se pili o lo'o aoga, fa'amatalaga faletupe, siaki a le malō, pepa a le malō, po'o se siaki togi o lo'o i ai lou igoa ma lou tuatusi o loo e nofo ai nei.

A'o iai le taimi e faagata ai le resitalaina o tagata palota ua atofaina mo le 10o aso a'o lumana'i le Aso Palota, e mafai ona fa'aauau lou resitala i so'o se taimi e fa'aaoga ai le Resitalaina o Tagata Palota i luga o initaneti po'o lou susu atu ise Nofoaga Autu o Au'aunaga mo Tagata Palota.

E mafai ona e fa'amaonia lau resitala i luga ole laina i le www.olvr.hawaii.gov e ala ile tu'uina atu ole Laisene Aveta'avale a Hawaii po'o le numera faailoa (ID) a le Setete o Hawaii, ma numera mulimuli e fa o lau Numera o le Saogalemu. E mafai fo'i ona e fa'afeso'ota'i le matou ofisa ile (808) 768-3800. Fa'amolemole ia sauni e tu'u mai le igoa, tuatusi nofomau, ma le aso fanau ina ia fa'amaonia ai lou tulaga.

RESITALAINA O LE TAGATA PALOTA – MANA'OGA O LE TUATUSI NOFOMAU

Tuatusi o le Falemeli (poo le P.O. Box) ma tuatusi pisinisi e le taliaina e avea ma tuatusi nofomau. Afai e leai sau tuatusi nofomau, e mana'omia se fa'amatalaga lelei o le nofoaga o lo'o e nofo ai. E mana'omia se tuatusi nofomau e fa'ataga ai le au fai palota e tofia oe i lau itumalo palota sa'o.

PALOTA LĒ AUAI (TOESEA MAI LE AIGA)

Fa'aaoga le "Pepa Talosaga Fa'a-Vaitaimi" pe afai e te tuua lou aiga i le vaitaimi o le palota. Afai e mana'omia, e mafai ona e talosagaina se palota a o to'esea mo le Uluai Palota ma le Faiga Palota Lautele i le taimi e tasi ma lafo atu i latou i tuatusi eseese. E tataua ona maua mai palota e le'i auai i le itula e 7:00 p.m. ile afiafi (Taimi Faatulagaina a Hawaii - HST) o le Aso Palota ina ia mafai ona faitau. E tusa ai ma le Tulafono a le Setete, o palota a le au toesea na maua i tua atu o lena taimi o le a lē faitauina.

PALOTA – ULUAI PALOTA

O le Setete o Hawaii e fa'atautaia se Uluai Palota e tasi. O le a fa'atonuina oe e filifili muamua lau vaega fa'aupufai a'o le'i fa'agasolo i le faiga o au filifiliga i sui tauvā. O sui tauvā o vaega fa'aupufai o le a lisiina i vaega eseese i le palota. E LĒ fa'atagaina le palota i Vaega Fa'aupufai e Tele.

Maitau: E leai se uluai palota o se fa'atāua peresetene i Hawaii.

PALOTA - FA'ASA'OINA O MEA SESĒ I LAU PALOTA PO'O LE TEUTUSI

Afai e te faia se mea sesē i lau palota pe toe faafoi atu le teutusi, fa'amolemole aua le fa'aaogaina le lipine fa'asa'o papa'e po'o vai, po'o fa'amatalaga e fa'asa'o ai mea sesē i lau palota. Valaau mai le matou ofisa i le (808) 768-3800 mo se palota suia. Fa'alagolago i le taimi ma tulaga, o le a fautuaina e le matou afaigaluega se fofō talafeagai e ono aofia ai le o'o atu i le tagata lava ia e aumai se pepa palota suia pe palota i se tasi o Nofoaga o Au'aunaga mo Tagata Palota.



PALOTA – NOFOAGA MO LE TU’UINA ATU MA ASO E FA’AGATA AI

E mafai ona e lafoai lau palota ua palotaina i so’o se Nofoga Autu o Au’aunaga mo Tagata Palota po’o le Nofoga e Tu’uina iai pe afai e maua i le itula e 7:00 p.m. o le Aso Palota. Mo se lisi o nofoaga ma itulā faigaluega, asiasi www.honoluluelections.us.

FAIGA PALOTA

E tusa ai ma le Tulafono Toeiloilo a Hawaii §11-132, e faasaina i totonu o le nofoaga atofaina e lua selau futu mai le nofoaga o so’o se nofoaga autu o au’aunaga a tagata palota, nofoaga e teu ai, ma ona meafaigaluega, ona fa’aalia pe tufatufaina ai o pepa fa’aupuga, fa’ailoga, po’o isi mea o fa’aupuga mo le fa’amoemoe e talosagaina ai palota mo po’o le fa’asagatau i so’o se tagata po’o se vaega fa’aupufai po’o se tulaga i luga o se fesili o palota



Faatonuga o le Palota (Ta'iala o Fa'aliliuga)

English

Samoan

Make Your Vote Count

Fai lau Palota ia Taulia

Mark Your Ballot

Completely fill in the box to the left of your choice with a black or blue pen.

If you vote for more candidates than allowed, your votes for that contest will not be counted.

If you make a mistake, contact your County Elections Division for a replacement. Do not use whiteout.

You will not be issued a replacement ballot once your ballot has been received by your County Elections Division

Faailoga Lau Palota

Faatumu atoa le pusa i le itu agavale o lau filifiliga i se peni uliuli po'o le lanumoana.

Afai e te palota mo sui tauvā e sili atu nai lo le aofai o faatagaina, o le a lē faitauina au palota mo lena tauvaga.

Afai e te faia se mea sesē, fa'afeso'ota'i lau Vaega o Faiga Palota a le Itumalo mo se palota e sui ai. Aua ne'i fa'aaogaina le titina pa'epa'e.

E lē tu'uina atu ia te oe se palota e sui ai pe a maua lau palota e lau Vaega o Faiga Palota a le Itumālō

Seal and Sign Your Return Envelope

Re-fold your ballot and place in the ballot secrecy sleeve. The ballot secrecy sleeve keeps your votes anonymous while being processed for counting.

Place the ballot secrecy sleeve in the return envelope.

SIGN and seal the return envelope. Your ballot will not be counted without your signature.

Faamaufa'aailoga ma Saini Lau Teutusi Toe Fa'afo'i

Toe gaugau lau palota ma tuu i totonu o le lima faalilolilo o le palota. O le lima fa'alilolilo o le palota e lē fa'aailoa ai au palota a'o fa'agasolo mo le faitauina.

Tuu le lima faalilolilo o le palota i totonu o le teutusi toe faafoi.

Saini ma faamaufaailoga le teutusi toe faafoi. E lē faitauina lau palota e aunoa ma lou saini.

Return Your Ballot

The return envelope is pre-addressed and postage-paid.

Your voted ballot must be received by the County Elections Division by 7:00 pm on Election Day, August 13, 2024.

When dropping your ballot in the mail, send it 3 days prior to Election Day to ensure it is received by the deadline.

Alternatively, places of deposit are established to drop off your voted ballot.

Toe Faafo'i lau Palota

O le teutusi o lo'o toe fa'afo'i mai ua mae'a ona fa'atuatusi ma tologi le meliina.

O lau palota e tatau ona maua e le Vaega o Faiga Palota a le Itumālō i le itula e 7:00 p.m. i le afiafi o le Aso Palota.

A lafo lau palota ile meli, lafo ile 3 aso a'o lumana'i le Aso Palota ina ia mautinoa e maua ile taimi e fa'agata ai.

I le isi itu, o nofoaga e tu'u ai e fa'amautu i le 5 aso pisinisi a'o lumana'i le Aso Palota e lafoa'i ai lau palota ua palotaina.



English

Samoan

Need Assistance?

You may receive voting assistance from a person of your choice excluding your employer or agent of that employer, agent of your labor union, or a candidate for any office that is listed on the ballot.

Mana'omia se Fesoasoani?

E mafai ona e maua se fesoasoani palota mai se tagata e te filifilia ae le aofia ai lou fale faigaluega po'o le sooupu o lena falefaigaluega, sui o lau iuni faigaluega, po'o se sui tauvā mo so'o se ofisa o lo'o lisiina i luga o le palota.

Contact your County Elections Division:

County of Hawaii

County of Maui

County of Kauai

City and County of Honolulu

Fa'afeso'ota'i lau Vaega o Faiga Palota a le Itumālō:

Itumālō o Hawaii

Itumālō o Maui

Itumālō o Kauai

Taulaga ma le Itumālō a Honolulu

Go online to:

Confirm your ballot was received

Locate a voter service center or place of deposit

Alu i luga ole initaneti mo:

Fa'amaonia ua maua lau palota

Su'e se nofoaga autu o au'aunaga mo tagata palota poo se nofoaga e tu'u ai

Voting in the Primary Election

Step 1

Select ONE political preference

You MUST select ONE political preference below:

Party 1

Party 2

Party 3

Party 4

Party 5

Nonpartisan Ballot (N)

Palota i le Ulua'i Faiga Palota

Sitepu 1

Filifili le TASI o fa'ataua fa'apolokiki

E TATAU ona e filifilia se TASI o fa'ataua fa'apolokiki i lalo:

Vaega Fa'aupufai 1

Vaega Fa'aupufai 2

Vaega Fa'aupufai 3

Vaega Fa'aupufai 4

Vaega Fa'aupufai 5

Palota lē fa'aituau



English

Samoaan

Step 2

Vote ONLY for the candidates of your selected political preference

U. S. Representative

State Senate

State Representative

Vote for Not More Than One (1)

Candidate 1

Sitepu 2

Palota NA O sui tauvā o lau fa'atāua fa'apolokiki

Sui U.S.

Senate a le Setete

Sui o le Setete

Palota mo le to'atasi (1)

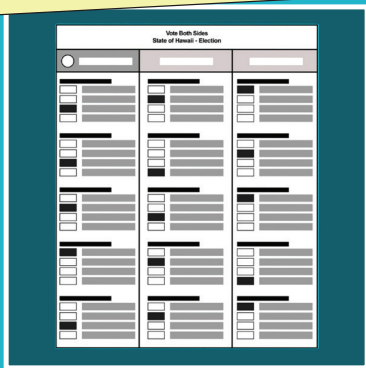
Sui Tauvā 1

Hawaii conducts a single party Primary Election to nominate the candidates who will represent each party in the General Election.

Everyone may vote in the Office of Hawaiian Affairs and County Contests found on the backside of the ballot.

O Hawaii e faia se Ulua'i Faiga Palota e tasi e filifilia ai sui tauvā o le a fai ma sui o vaega fa'aupufai taitasi i le Faiga Palota Lautele. E mafai e tagata uma ona palota i le Ofisa o Mataupu Tau Hawaii ma Tauvaga Itumalo o lo'o maua i tua o le palota.

Make Your Vote Count



Mark Your Ballot

Completely fill in the box to the left of your choice with a black or blue pen.

If you vote for more candidates than allowed, your votes for that contest will not be counted.

If you make a mistake, contact your County Elections Division for a replacement ballot. Do not use whiteout.

You will not be issued a replacement ballot once your ballot has been received by your County Elections Division.

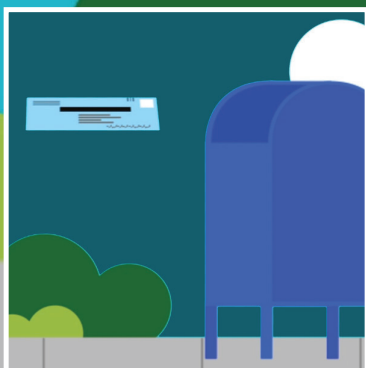


Seal and Sign Your Return Envelope

Re-fold your ballot and place in the ballot secrecy sleeve. The ballot secrecy sleeve keeps your votes anonymous while being processed for counting.

Place the ballot secrecy sleeve in the return envelope.

SIGN and seal the return envelope. Your ballot will not be counted without your signature.



Return Your Ballot

The return envelope is pre-addressed and postage-paid.

Your voted ballot must be received by the County Elections Division by 7:00 pm on Election Day, August 10, 2024.

When dropping your ballot in the mail, send it 3 days prior to Election Day to ensure it is received by the deadline.

Alternatively, places of deposit are established 5 business days prior to Election Day to drop off your voted ballot.

Need Assistance?

You may receive voting assistance from a person of your choice excluding your employer or agent of that employer, agent of your labor union, or a candidate for any office that is listed on the ballot.

Contact your County Elections Division:

County of Hawaii	(808) 961-8277
County of Maui	(808) 270-7749
County of Kauai	(808) 241-4800
City and County of Honolulu	(808) 768-3800

Go online to:


- Confirm your ballot was received
- Locate a voter service center or place of deposit

www.elections.hawaii.gov

Voting in the PRIMARY ELECTION

Step 1

Select ONE political preference

 **Start voting here**

You **MUST** select **ONE** political preference below:

<input type="checkbox"/>	PARTY 1
<input type="checkbox"/>	PARTY 2
<input type="checkbox"/>	PARTY 3
<input type="checkbox"/>	PARTY 4
<input type="checkbox"/>	PARTY 5
<input type="checkbox"/>	NONPARTISAN BALLOT (N)

Instructions

Vote **ONLY** for the candidates of your selected political preference

Party 2

U.S. Representative
Vote For Not More Than One (1)

Candidate 1

State Senate
Vote For Not More Than One (1)

Candidate 1

State Representative
Vote For Not More Than One (1)

Candidate 1

Step 2

Hawaii conducts a single party Primary Election to nominate the candidates who will represent each party in the General Election. Everyone may vote in the Office of Hawaiian Affairs and County Contests found on the backside of the ballot.



Palota i le Fesi (Tu’ufaatasiga o Aiaiga o le Palota 2024 ma Fa’aliliuga)

Facsimile Ballot – Glossary of 2024 Ballot Terms and Translation

Vaega	English	Samoaan
	Start Voting Here	Amata palota iinei
	You MUST select ONE political party or nonpartisan ballot below.	E TATAU ona e filifilia se TASI o fa’ataua fa’apolokiki i lalo:
	INSTRUCTIONS	FA’ATONUGA
1	You MUST select ONE political preference from the box above for your votes to count.	E TATAU ona e filifilia se TASI o fa’ataua fa’apolokiki mai le pusa o lo’o i luga mo au palota e faitau ai.
2	Vote ONLY for candidates within your selected preference.	Palota NA O sui tauvā i totonu o lau fa’atāua filifilia. E lē faitaulia palota mo se isi lava fa’atāua fa’apolokiki.
3	Vote for the Office of Hawaiian Affairs and County contests on the back.	Palota mo le Ofisa o Mataupu Tau Hawaii ma Tavaga a Itumalo i le itulau i tua.
	MAKING SELECTIONS	FAIA O FILIFILIGA
	Completely fill in the box to the left of your choice with a black or blue pen. Do not use whiteout.	Faatumu atoa le pusa i le itu agavale o lau filifiliga i se peni uliuli po o le lanumoana. Aua ne’i fa’aogaina le titina pa’epa’e.
	Vote for Not More than One (1)	Palota mo le to’atasi (1)
	Vote for Not More than Three (3)	Palota mo le to’atolu (3)
	If you vote for more candidates than allowed in a contest, your votes for that contest will not be counted.	Afai e te palota mo sui tauvā e sili atu nai lo le mea e faatagaina i se tauvaga, o au palota mo lena tauvaga o le a lē faitauina.
	If you make a mistake, request a replacement ballot at hnlvote.ehawaii.gov or call (808) 768-3800. Do not use whiteout.	Afai e te faia se mea sesē, fa’afeso’ota’i lau Vaega o Faiga Palota a le Itumalo mo se palota e sui ai. Aua ne’i fa’aogaina le titina pa’epa’e.



Vaega	English	Samoan
	GLOSSARY OF 2024 BALLOT TERMS	LISI O UIGA O UPU PALOTA 2024
	Precinct – The geographic area that is the basis for determining which contests and issues the votes legally residing in that area are eligible to vote on.	Pitonu’u - Ole vaega fa’afanua lea e fai ma fa’avae mo le fuafuaina po’o fea tauvaga ma mataupu, e agava’a e palota ai tagata palota o lo’o aumau fa’aletulafono i lea vaega.
	Federal Contests – Any primary, general, or special election in which a candidate for Federal office appears on the ballot.	Tauvaga Feterale - So’o se ulua’i palota, palota lautele, po’o palota fa’apitoa o lo’o fa’aalia ai se sui tauva mo le tofi Feterale i luga o le palota.
	U. S. Senator	Senate U.S.
	U. S. Representative	Sui U.S.
	State Contests – Contests for members to State Offices, including Governor, Lieutenant Governor, and State Legislative Offices	Tauvaga a le Setete - Tauvaga mo sui i Ofisa a le Setete, e aofia ai Kovana, Lutena Kovana, ma Ofisa Faitulafono a le Setete.
	Governor	Kovana
	Lieutenant Governor	Lutena Kovana
	State Senator	Senate a le Setete
	State Representative	Sui a le Setete S
	Office of Hawaiian Affairs (OHA) - OHA is a public agency responsible for improving the wellbeing of Native Hawaiians. The agency is governed by a Board of Trustees, made up of nine members who are elected statewide to serve four-year terms and set the organization's policies	Ofisa o Mataupu Tau Hawaii (po’o Office of Hawaiian Affairs (OHA) - ose lala sooupu a le malo e nafa ma le faaleleia o le soifua manuia o tagatanu’u o Hawaii. O le lala sooupu e pulea e le Komiti Faatino o Tausi Mavaega, e aofia ai sui e toaiva ua filifilia i le setete atoa e galulue mo le fa tausaga ma faatulaga faiga faavae a le faalapopotoga.
	Hawaii Resident Trustee	Tausi Mavaega Nofomau Hawaii
	Maui Resident Trustee	Tausi Mavaega Nofomau Maui
	Oahu Resident Trust	Tausi Mavaega Nofomau Oahu
	At-Large Trustee (3 seats)	Tausi Mavaega Tele (3 nofoa)



Vaega	English	Samoan
	County Contests – Contests for members to County Offices, including Mayor, Prosecuting Attorney, and City Council District Offices	Tauvaga Itumālō - Tauvaga mo sui i Ofisa o le Itumālō, e aofia ai le Pulenuu, Loia o Moliaga, ma Ofisa Itumālō o le Fono a le Taulaga.
	District Councilmember	Sui o le Fono Fa’aitumālō
	Proposed Amendments to the Honolulu City Charter	Fuafuaina o Teuteuga i le Fa’ailoga a le Taulaga o Honolulu
	Proposed Amendments to the Hawaii State Constitution	Fuafuaina o Teuteuga o le Faavae o le Setete o Hawaii

Start Voting Here

You **MUST** select **ONE** political preference below:

GREEN PARTY (G)

NONPARTISAN BALLOT (N)

CONSTITUTION PARTY (C)

ALOHA AINA PARTY (A)

REPUBLICAN PARTY (R)

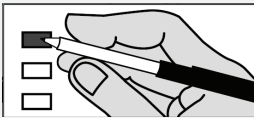
LIBERTARIAN PARTY (L)

DEMOCRATIC PARTY (D)

Instructions

- You **MUST** select **ONE** political preference from the box above for your votes to count.
- Vote **ONLY** for candidates within your selected preference. Votes for another political preference will not be counted.
- You are eligible to vote for **ALL** of the Office of Hawaiian Affairs and County Contests on the back.

Making Selections



Completely fill in the box to the left of your choice with a black or blue pen.

If you vote for more candidates than allowed in a contest, your votes for that contest will not be counted.

If you make a mistake, request a replacement ballot at hnlvote.ehawaii.gov or call (808) 768-3800. Do not use whiteout.

Green Party (G)

U.S. Senator
Vote For Not More Than One (1)

CANDIDATE A

CANDIDATE B

U.S. Representative
Vote For Not More Than One (1)

CANDIDATE A

CANDIDATE B

Governor
Vote For Not More Than One (1)

CANDIDATE A

CANDIDATE B

Lieutenant Governor
Vote For Not More Than One (1)

CANDIDATE A

CANDIDATE B

State Senator
Vote For Not More Than One (1)

CANDIDATE A

CANDIDATE B

State Representative
Vote For Not More Than One (1)

CANDIDATE A

CANDIDATE B

Nonpartisan Ballot (N)

U.S. Senator
Vote For Not More Than One (1)

CANDIDATE A

CANDIDATE B

U.S. Representative
Vote For Not More Than One (1)

CANDIDATE A

CANDIDATE B

Governor
Vote For Not More Than One (1)

CANDIDATE A

CANDIDATE B

Lieutenant Governor
Vote For Not More Than One (1)

CANDIDATE A

CANDIDATE B

State Senator
Vote For Not More Than One (1)

CANDIDATE A

CANDIDATE B

State Representative
Vote For Not More Than One (1)

CANDIDATE A

Constitution Party (C)

U.S. Senator
Vote For Not More Than One (1)

CANDIDATE A

CANDIDATE B

U.S. Representative
Vote For Not More Than One (1)

CANDIDATE A

CANDIDATE B

Governor
Vote For Not More Than One (1)

CANDIDATE A

CANDIDATE B

Lieutenant Governor
Vote For Not More Than One (1)

CANDIDATE A

CANDIDATE B

State Senator
Vote For Not More Than One (1)

CANDIDATE A

State Representative
Vote For Not More Than One (1)

CANDIDATE A

Aloha Aina Party (A)

U.S. Senator
Vote For Not More Than One (1)

CANDIDATE A

CANDIDATE B

U.S. Representative
Vote For Not More Than One (1)

CANDIDATE A

CANDIDATE B

Governor
Vote For Not More Than One (1)

CANDIDATE A

CANDIDATE B

Lieutenant Governor
Vote For Not More Than One (1)

CANDIDATE A

CANDIDATE B

State Senator
Vote For Not More Than One (1)


CANDIDATE A

State Representative
Vote For Not More Than One (1)


CANDIDATE A

Republican Party (R)
U.S. Senator Vote For Not More Than One (1)
<input type="checkbox"/> CANDIDATE A
<input type="checkbox"/> CANDIDATE B
U.S. Representative Vote For Not More Than One (1)
<input type="checkbox"/> CANDIDATE A
<input type="checkbox"/> CANDIDATE B
Governor Vote For Not More Than One (1)
<input type="checkbox"/> CANDIDATE A
<input type="checkbox"/> CANDIDATE B
Lieutenant Governor Vote For Not More Than One (1)
<input type="checkbox"/> CANDIDATE A
<input type="checkbox"/> CANDIDATE B
State Senator Vote For Not More Than One (1)
<input type="checkbox"/> CANDIDATE A
<input type="checkbox"/> CANDIDATE B
State Representative Vote For Not More Than One (1)
<input type="checkbox"/> CANDIDATE A
<input type="checkbox"/> CANDIDATE B


Democratic Party (D)
U.S. Senator Vote For Not More Than One (1)
<input type="checkbox"/> CANDIDATE A
<input type="checkbox"/> CANDIDATE B
U.S. Representative Vote For Not More Than One (1)
<input type="checkbox"/> CANDIDATE A
<input type="checkbox"/> CANDIDATE B
Governor Vote For Not More Than One (1)
<input type="checkbox"/> CANDIDATE A
<input type="checkbox"/> CANDIDATE B
Lieutenant Governor Vote For Not More Than One (1)
<input type="checkbox"/> CANDIDATE A
<input type="checkbox"/> CANDIDATE B
State Senator Vote For Not More Than One (1)
<input type="checkbox"/> CANDIDATE A
<input type="checkbox"/> CANDIDATE B
State Representative Vote For Not More Than One (1)
<input type="checkbox"/> CANDIDATE A
<input type="checkbox"/> CANDIDATE B

 Office of Hawaiian Affairs
Hawaii Resident Trustee Vacancy Vote For Not More Than One (1)
<input type="checkbox"/> CANDIDATE A
<input type="checkbox"/> CANDIDATE B
Maui Resident Trustee Vote For Not More Than One (1)
<input type="checkbox"/> CANDIDATE A
<input type="checkbox"/> CANDIDATE B
Oahu Resident Trustee Vote For Not More Than One (1)
<input type="checkbox"/> CANDIDATE A
<input type="checkbox"/> CANDIDATE B
At-Large Trustee Vote For Not More Than Three (3)
<input type="checkbox"/> CANDIDATE A
<input type="checkbox"/> CANDIDATE B
<input type="checkbox"/> CANDIDATE C
<input type="checkbox"/> CANDIDATE D
<input type="checkbox"/> CANDIDATE E

Libertarian Party (L)
U.S. Senator Vote For Not More Than One (1)
<input type="checkbox"/> CANDIDATE A
<input type="checkbox"/> CANDIDATE B
U.S. Representative Vote For Not More Than One (1)
<input type="checkbox"/> CANDIDATE A
<input type="checkbox"/> CANDIDATE B
Governor Vote For Not More Than One (1)
<input type="checkbox"/> CANDIDATE A
<input type="checkbox"/> CANDIDATE B
Lieutenant Governor Vote For Not More Than One (1)
<input type="checkbox"/> CANDIDATE A
<input type="checkbox"/> CANDIDATE B
State Senator Vote For Not More Than One (1)
<input type="checkbox"/> CANDIDATE A
State Representative Vote For Not More Than One (1)
<input type="checkbox"/> CANDIDATE A

 County Contests
City and County of Honolulu
Councilmember Vote For Not More Than One (1)
<input type="checkbox"/> CANDIDATE A
<input type="checkbox"/> CANDIDATE B

MARK • MAIL • MATTER

 If you do not sign, your ballot will not be counted!

 Must be received by **7p.m. Election Day** to be counted.
Affix foreign air mail postage if mailed from a foreign postal facility.



1-987654 9123456 Dist-Prec: 40-04 P BTC: 518
1234 ALOHA LN



AFFIRMATION STATEMENT

In signing, I affirm: I am a resident and registered voter of the precinct and representative district as indicated on the left and have voted this ballot without the personal assistance of my employer, union agent, or any candidate.

SIGN IN BOX

JOE A. VOTER

A witness must sign below only if a voter uses a mark as a signature.
Power of attorney is NOT acceptable.

Witness Signature

Address/Phone

JOE A. VOTER
PO BOX 9999
HONOLULU, HI 96813



Fa'afoti Palota (Nu. 10) Sa'vali o Teutusi

Tu'u le Palota i totonu o le Lima Faalilo A'o le'i Faamaufaailogaina Afai e te le'i saina, e le faitauina lau palota!

E tatau ona maua i le itula e 7 p.m. i le afiafi o le Aso Palota ina ia faitauina.

Fa'apipi'i le ea meli mai fafo pe a meli mai se falemeli mai fafo.

Manaomia se sui palota? Asiasi www.honoluluelections.us pe vili le matou ofisa ile 808-768-3800.

OFISA O LE FAILAUTUSI O LE TAULAGA
PO BOX 30940
HONOLULU HI 96820-9971

FA'AMAONIGA

I le saina, ou te fa amaonia: O a u o se tagata nofomau ma resitalaina o le pitonu'u ma sui itumalo e pei ona fa aalia i le itu agavale ma sa ou palota i lenei palota e aunoa ma se fesoasoani patino a lo u pule o le fale faigaluega, sui o lo'u fale faigaluega, sui o la'u iuni o tagata faigaluega, po'o so'o se sui tauva o lo'o lisiina ile palota.

Saina i Totonu o le Pusa

Saina Palota

E tatau i se molimau ona saina i lalo pe afai e fa'aaoga e le tagata palota se maka e fai ma saina.
E LE taliaina se sui faaloia.

Saina Molimau

Tuatusi/Telefoni